

STR # 27974 / Created February 20, 2019



# Monthly STAR Report : Super 8 Imlay City

For the Month of: January 2019

Currency: US Dollar / Competitive Set Data Excludes Subject Property

Table Of Contents	1
Monthly Performance at a Glance	2
STAR Summary	3
Competitive Set Report	4
Response Report	5
Day of Week & Weekday/Weekend	6
Daily Data for the Month	7
Help	8

735 East Main Street, Hendersonville, TN 37075 USA  
T : +1 615 824 8664  
support@str.com www.str.com

Blue Fin Building, 110 Southwark Street, London SE1 0TA  
T : +44 (0)20 7922 1930  
info@strglobal.com www.str.com

The STR STAR Report is a publication of STR, Inc. and STR Global, Ltd., and is intended solely for use by paid subscribers. Reproduction or distribution of the STR STAR Report, in whole or part, without written permission is prohibited and subject to legal action. If you have received this report and are NOT a subscriber to the STR STAR Report, please contact us immediately. Source: 2019 STR, Inc. / STR Global, Ltd. trading as "STR".

## Tab 2 - Monthly Performance at a Glance - My Property vs. Competitive Set

Super 8 Imlay City 6951 Newark Rd Imlay City, MI 48444-9784 Phone: (810) 724-8700

STR # 27974 ChainID: 03523 MgtCo: None Owner: None

For the Month of: January 2019 Date Created: February 20, 2019 Monthly Competitive Set Data Excludes Subject Property

### January 2019

	Occupancy (%)			ADR			RevPAR		
	My Prop	Comp Set	Index (MPI)	My Prop	Comp Set	Index (ARI)	My Prop	Comp Set	Index (RGI)
Current Month	19.2	45.4	42.3	73.02	85.49	85.4	14.02	38.82	36.1
Year To Date	19.2	45.4	42.3	73.02	85.49	85.4	14.02	38.82	36.1
Running 3 Month	26.5	46.2	57.3	67.33	84.10	80.1	17.83	38.87	45.9
Running 12 Month	39.0	61.5	63.5	71.20	86.70	82.1	27.80	53.29	52.2

### January 2019 vs. 2018 Percent Change (%)

	Occupancy			ADR			RevPAR		
	My Prop	Comp Set	Index (MPI)	My Prop	Comp Set	Index (ARI)	My Prop	Comp Set	Index (RGI)
Current Month	-31.9	-17.3	-17.6	0.3	-1.0	1.2	-31.7	-18.1	-16.6
Year To Date	-31.9	-17.3	-17.6	0.3	-1.0	1.2	-31.7	-18.1	-16.6
Running 3 Month	-23.6	-15.6	-9.5	2.6	1.5	1.0	-21.6	-14.3	-8.5
Running 12 Month	-15.4	4.7	-19.2	6.4	-0.6	7.0	-10.0	4.0	-13.5

# Tab 3 - STAR Summary - My Property vs. Comp Set and Industry Segments

Super 8 Imlay City 6951 Newark Rd Imlay City, MI 48444-9784 Phone: (810) 724-8700

STR # 27974 ChainID: 03523 MgtCo: None Owner: None

For the Month of: January 2019 Date Created: February 20, 2019 Monthly Competitive Set Data Excludes Subject Property

Super 8 Imlay City
Market: Detroit, MI
Market Class: Economy Class
Submarket: Auburn Hills/Madison Heights, M
Submarket Scale: Economy Chains
Competitive Set: Competitors

Occupancy (%)							
Current Month	% Chg	Year to Date	% Chg	Running 3 Month	% Chg	Running 12 Month	% Chg
19.2	-31.9	19.2	-31.9	26.5	-23.6	39.0	-15.4
53.3	-5.3	53.3	-5.3	55.3	-3.7	66.9	1.0
54.3	-4.6	54.3	-4.6	57.7	-3.5	68.8	0.9
51.3	-8.4	51.3	-8.4	55.9	-5.3	67.2	-2.2
51.8	7.5	51.8	7.5	56.2	4.0	63.8	-0.6
45.4	-17.3	45.4	-17.3	46.2	-15.6	61.5	4.7

Supply			
Month % Chg	YTD % Chg	Run 3 Mon % Chg	Run 12 Mon % Chg
0.0	0.0	0.0	0.0
3.7	3.7	3.2	2.5
0.0	0.0	0.7	0.7
4.3	4.3	4.8	1.8
0.0	0.0	6.3	11.6
0.0	0.0	0.0	0.0

Super 8 Imlay City
Market: Detroit, MI
Market Class: Economy Class
Submarket: Auburn Hills/Madison Heights, M
Submarket Scale: Economy Chains
Competitive Set: Competitors

Average Daily Rate							
Current Month	% Chg	Year to Date	% Chg	Running 3 Month	% Chg	Running 12 Month	% Chg
73.02	0.3	73.02	0.3	67.33	2.6	71.20	6.4
111.07	0.7	111.07	0.7	103.52	1.4	104.83	2.4
55.50	-1.9	55.50	-1.9	55.33	-1.4	57.98	0.6
98.80	-0.3	98.80	-0.3	95.45	-0.8	98.61	0.3
49.42	-5.4	49.42	-5.4	49.83	-5.5	53.11	-2.6
85.49	-1.0	85.49	-1.0	84.10	1.5	86.70	-0.6

Demand			
Month % Chg	YTD % Chg	Run 3 Mon % Chg	Run 12 Mon % Chg
-31.9	-31.9	-23.6	-15.4
-1.8	-1.8	-0.5	3.5
-4.7	-4.7	-2.8	1.6
-4.4	-4.4	-0.7	-0.5
7.5	7.5	10.6	10.9
-17.3	-17.3	-15.6	4.7

Super 8 Imlay City
Market: Detroit, MI
Market Class: Economy Class
Submarket: Auburn Hills/Madison Heights, M
Submarket Scale: Economy Chains
Competitive Set: Competitors

RevPAR							
Current Month	% Chg	Year to Date	% Chg	Running 3 Month	% Chg	Running 12 Month	% Chg
14.02	-31.7	14.02	-31.7	17.83	-21.6	27.80	-10.0
59.24	-4.6	59.24	-4.6	57.27	-2.3	70.16	3.5
30.15	-6.5	30.15	-6.5	31.90	-4.8	39.89	1.4
50.65	-8.6	50.65	-8.6	53.35	-6.1	66.27	-1.9
25.58	1.7	25.58	1.7	28.01	-1.7	33.88	-3.3
38.82	-18.1	38.82	-18.1	38.87	-14.3	53.29	4.0

Revenue			
Month % Chg	YTD % Chg	Run 3 Mon % Chg	Run 12 Mon % Chg
-31.7	-31.7	-21.6	-10.0
-1.1	-1.1	0.8	6.1
-6.5	-6.5	-4.1	2.1
-4.7	-4.7	-1.6	-0.2
1.7	1.7	4.5	8.0
-18.1	-18.1	-14.3	4.0

Market: Detroit, MI
Market Class: Economy Class
Submarket: Auburn Hills/Madison Heights, M
Submarket Scale: Economy Chains
Competitive Set: Competitors

Census/Sample - Properties & Rooms					
Census		Sample		Sample %	
Properties	Rooms	Properties	Rooms	Rooms	
411	45097	279	35960	79.7	
167	11310	60	6037	53.4	
78	8818	60	7579	85.9	
19	2041	18	1925	94.3	
4	295	4	295	100.0	

Pipeline			
Market: Detroit, MI			
Under Construction		Planning	
Properties	Rooms	Properties	Rooms
14	1446	71	7447
See Help page for pipeline definitions.			

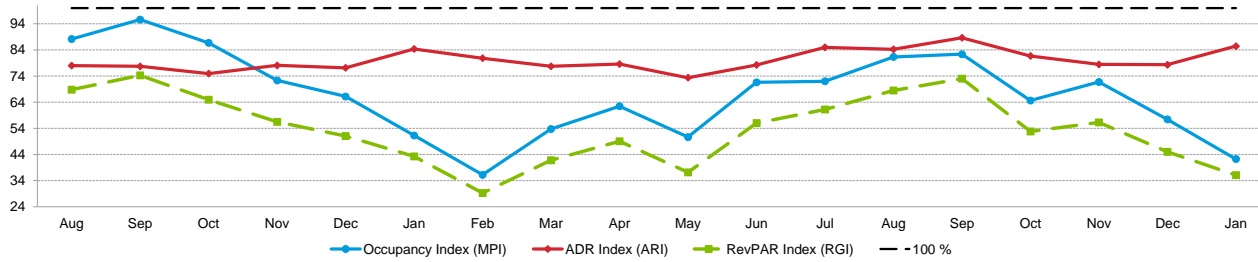
# Tab 4 - Competitive Set Report

Super 8 Imlay City 6951 Newark Rd Imlay City, MI 48444-9784 Phone: (810) 724-8700

STR # 27974 ChainID: 03523 MgtCo: None Owner: None

For the Month of: January 2019 Date Created: February 20, 2019 Monthly Competitive Set Data Excludes Subject Property

## Monthly Indexes



## RevPAR Percent Change



Occupancy (%)	2017					2018												2019	Year To Date			Running 3 Month			Running 12 Month		
	Aug	Sep	Oct	Nov	Dec	Jan	Feb	Mar	Apr	May	Jun	Jul	Aug	Sep	Oct	Nov	Dec	Jan	2017	2018	2019	2017	2018	2019	2017	2018	2019
My Property	60.8	65.1	53.6	42.3	33.8	28.2	21.4	34.1	38.2	32.7	53.1	53.3	59.1	56.4	39.7	34.7	25.9	19.2	27.2	28.2	19.2	31.4	34.7	26.5	43.9	46.2	39.0
Competitive Set	68.9	68.1	61.8	58.4	51.0	54.9	59.0	63.4	61.2	64.5	74.2	74.0	72.6	68.5	61.4	48.3	45.0	45.4	44.4	54.9	45.4	45.2	54.8	46.2	53.5	58.7	61.5
Index (MPI)	88.2	95.6	86.7	72.3	66.2	51.3	36.2	53.8	62.5	50.7	71.6	72.0	81.4	82.3	64.6	71.8	57.5	42.3	61.1	51.3	42.3	69.3	63.3	57.3	82.0	78.6	63.5
Rank	4 of 5	4 of 5	5 of 5	5 of 5	5 of 5	5 of 5	5 of 5	5 of 5	5 of 5	5 of 5	5 of 5	5 of 5	5 of 5	5 of 5	5 of 5	5 of 5	5 of 5	5 of 5	5 of 5	5 of 5	5 of 5	5 of 5	5 of 5	5 of 5	5 of 5	5 of 5	5 of 5
% Chg																											
My Property	3.0	-0.8	26.2	12.7	13.8	3.8	-25.1	5.7	-9.0	-30.4	-12.1	-9.9	-2.7	-13.3	-26.0	-18.0	-23.4	-31.9	-12.9	3.8	-31.9	-19.5	10.5	-23.6	-11.6	5.2	-15.4
Competitive Set	8.4	7.7	5.7	19.2	20.3	23.7	25.4	23.3	23.7	10.5	7.9	12.8	5.4	0.6	-0.7	-17.3	-11.8	-17.3	21.9	23.7	-17.3	11.0	21.0	-15.6	1.3	9.8	4.7
Index (MPI)	-5.0	-7.9	19.4	-5.4	-5.4	-16.1	-40.2	-14.3	-26.5	-37.0	-18.5	-20.1	-7.8	-13.9	-25.4	-0.8	-13.2	-17.6	-28.6	-16.1	-17.6	-27.5	-8.7	-9.5	-12.8	-4.2	-19.2
Rank	3 of 5	4 of 5	1 of 5	5 of 5	3 of 5	4 of 5	5 of 5	3 of 5	5 of 5	5 of 5	5 of 5	5 of 5	3 of 5	5 of 5	5 of 5	4 of 5	5 of 5	4 of 5	5 of 5	4 of 5	4 of 5	5 of 5	4 of 5	5 of 5	5 of 5	4 of 5	5 of 5
ADR	2017					2018												2019	Year To Date			Running 3 Month			Running 12 Month		
	Aug	Sep	Oct	Nov	Dec	Jan	Feb	Mar	Apr	May	Jun	Jul	Aug	Sep	Oct	Nov	Dec	Jan	2017	2018	2019	2017	2018	2019	2017	2018	2019
My Property	69.85	71.49	66.28	63.18	62.64	72.84	64.48	63.12	65.31	63.23	72.43	75.96	76.94	79.87	72.73	66.35	64.37	73.02	65.75	72.84	73.02	64.23	65.65	67.33	66.92	66.94	71.20
Competitive Set	89.55	92.02	88.41	80.93	81.17	86.32	79.77	81.20	83.10	86.17	92.56	89.34	91.37	90.11	89.00	84.60	82.19	85.49	85.74	86.32	85.49	84.98	82.83	84.10	88.25	87.23	86.70
Index (ARI)	78.0	77.7	75.0	78.1	77.2	84.4	80.8	77.7	78.6	73.4	78.3	85.0	84.2	88.6	81.7	78.4	78.3	85.4	76.7	84.4	85.4	75.6	79.3	80.1	75.8	76.7	82.1
Rank	5 of 5	5 of 5	5 of 5	4 of 5	4 of 5	4 of 5	4 of 5	4 of 5	4 of 5	5 of 5	5 of 5	4 of 5	4 of 5	4 of 5	4 of 5	4 of 5	4 of 5	4 of 5	4 of 5	4 of 5	4 of 5	5 of 5	4 of 5	4 of 5	5 of 5	5 of 5	4 of 5
% Chg																											
My Property	0.9	-5.8	1.5	-0.8	-1.4	10.8	5.0	-1.3	-0.7	-2.9	10.6	9.0	10.2	11.7	9.7	5.0	2.8	0.3	1.8	10.8	0.3	2.9	2.2	2.6	4.3	0.0	6.4
Competitive Set	-2.1	1.0	0.7	-4.2	-4.2	0.7	-10.1	-10.9	-1.0	2.1	4.5	-0.1	2.0	-2.1	0.7	4.5	1.2	-1.0	0.7	0.7	-1.0	1.5	-2.5	1.5	3.9	-1.2	-0.6
Index (ARI)	3.0	-6.7	0.8	3.6	2.9	10.0	16.8	10.7	0.3	-4.9	5.8	9.1	8.0	14.1	9.0	0.5	1.5	1.2	1.1	10.0	1.2	1.3	4.9	1.0	0.5	1.2	7.0
Rank	2 of 5	5 of 5	2 of 5	2 of 5	3 of 5	1 of 5	1 of 5	2 of 5	3 of 5	4 of 5	1 of 5	1 of 5	1 of 5	1 of 5	1 of 5	3 of 5	2 of 5	3 of 5	2 of 5	1 of 5	3 of 5	2 of 5	2 of 5	2 of 5	3 of 5	2 of 5	1 of 5
RevPAR	2017					2018												2019	Year To Date			Running 3 Month			Running 12 Month		
	Aug	Sep	Oct	Nov	Dec	Jan	Feb	Mar	Apr	May	Jun	Jul	Aug	Sep	Oct	Nov	Dec	Jan	2017	2018	2019	2017	2018	2019	2017	2018	2019
My Property	42.43	46.55	35.53	26.71	21.15	20.52	13.78	21.52	24.96	20.67	38.47	40.47	45.46	45.08	28.86	23.00	16.65	14.02	17.85	20.52	14.02	20.15	22.75	17.83	29.36	30.90	27.80
Competitive Set	61.69	62.67	54.67	47.30	41.41	47.41	47.06	51.47	50.84	55.61	68.66	66.11	66.36	61.77	54.63	40.86	36.99	38.82	38.08	47.41	38.82	38.45	45.35	38.87	47.20	51.23	53.29
Index (RGI)	68.8	74.3	65.0	56.5	51.1	43.3	29.3	41.8	49.1	37.2	56.0	61.2	68.5	73.0	52.8	56.3	45.0	36.1	46.9	43.3	36.1	52.4	50.2	45.9	62.2	60.3	52.2
Rank	5 of 5	5 of 5	5 of 5	5 of 5	5 of 5	5 of 5	5 of 5	5 of 5	5 of 5	5 of 5	5 of 5	5 of 5	5 of 5	5 of 5	5 of 5	5 of 5	5 of 5	5 of 5	5 of 5	5 of 5	5 of 5	5 of 5	5 of 5	5 of 5	5 of 5	5 of 5	5 of 5
% Chg																											
My Property	3.9	-6.5	28.1	11.9	12.2	14.9	-21.3	4.3	-9.6	-32.4	-2.7	-1.8	7.1	-3.1	-18.8	-13.9	-21.3	-31.7	-11.4	14.9	-31.7	-17.2	12.9	-21.6	-7.8	5.2	-10.0
Competitive Set	6.2	8.8	6.4	14.1	15.3	24.5	12.7	9.9	22.5	12.9	12.8	12.7	7.6	-1.5	-0.1	-13.6	-10.7	-18.1	22.8	24.5	-18.1	12.6	17.9	-14.3	5.2	8.5	4.0
Index (RGI)	-2.2	-14.1	20.4	-2.0	-2.7	-7.7	-30.2	-5.1	-26.2	-40.1	-13.8	-12.9	-0.4	-1.7	-18.7	-0.3	-11.9	-16.6	-27.8	-7.7	-16.6	-26.5	-4.3	-8.5	-12.4	-3.0	-13.5
Rank	3 of 5	5 of 5	1 of 5	4 of 5	3 of 5	3 of 5	5 of 5	2 of 5	5 of 5	5 of 5	5 of 5	5 of 5	2 of 5	4 of 5	4 of 5	4 of 5	5 of 5	4 of 5	5 of 5	3 of 5	4 of 5	5 of 5	4 of 5	5 of 5	5 of 5	5 of 5	5 of 5

# Tab 5 - Response Report

Super 8 Imlay City 6951 Newark Rd Imlay City, MI 48444-9784 Phone: (810) 724-8700  
 STR # 27974 ChainID: 03523 MgtCo: None Owner: None  
 For the Month of: January 2019 Date Created: February 20, 2019

## This Year

Jan 1st - New Year's Day  
 Jan 21st - Martin Luther King Day

## January 2019 (This Year)

Sun	Mon	Tue	Wed	Thu	Fri	Sat
		1	2	3	4	5
6	7	8	9	10	11	12
13	14	15	16	17	18	19
20	21	22	23	24	25	26
27	28	29	30	31		

## January 2018 (Last Year)

Sun	Mon	Tue	Wed	Thu	Fri	Sat
	1	2	3	4	5	6
7	8	9	10	11	12	13
14	15	16	17	18	19	20
21	22	23	24	25	26	27
28	29	30	31			

## Last Year

Jan 1st - New Year's Day  
 Jan 15th - Martin Luther King Day

STR#	Name	City, State	Zip	Phone	Rooms	Open Date
27974	Super 8 Imlay City	Imlay City, MI	48444-9784	(810) 724-8700	60	199008
20768	Best Western Lapeer Inn	Lapeer, MI	48446-3065	(810) 667-9444	89	198506
38581	Days Inn Imlay City	Imlay City, MI	48444-9657	(810) 683-9717	58	199808
39667	Holiday Inn Express Lapeer	Lapeer, MI	48446-3035	(810) 245-7700	72	200003
42802	Red Roof Inn Lake Orion Auburn Hills	Lake Orion, MI	48360-2239	(248) 391-2755	76	200105
					355	

2017												2018												
Feb	Mar	Apr	May	Jun	Jul	Aug	Sep	Oct	Nov	Dec	Jan	Jan	Feb	Mar	Apr	May	Jun	Jul	Aug	Sep	Oct	Nov	Dec	Jan
●	●	●	●	●	●	●	●	●	●	●	●	●	●	●	●	●	●	●	●	●	●	●	●	●
●	●	●	●	●	●	●	●	●	●	●	●	●	●	●	●	●	●	●	●	●	●	●	●	●
●	●	●	●	●	●	●	●	●	●	●	●	●	●	●	●	●	●	●	●	●	●	●	●	●
●	●	●	●	●	●	●	●	●	●	●	●	●	●	●	●	●	●	●	●	●	●	●	●	●
●	●	●	●	●	●	●	●	●	●	●	●	●	●	●	●	●	●	●	●	●	●	●	●	●

Data received:

- = Monthly Only
- = Monthly & Daily



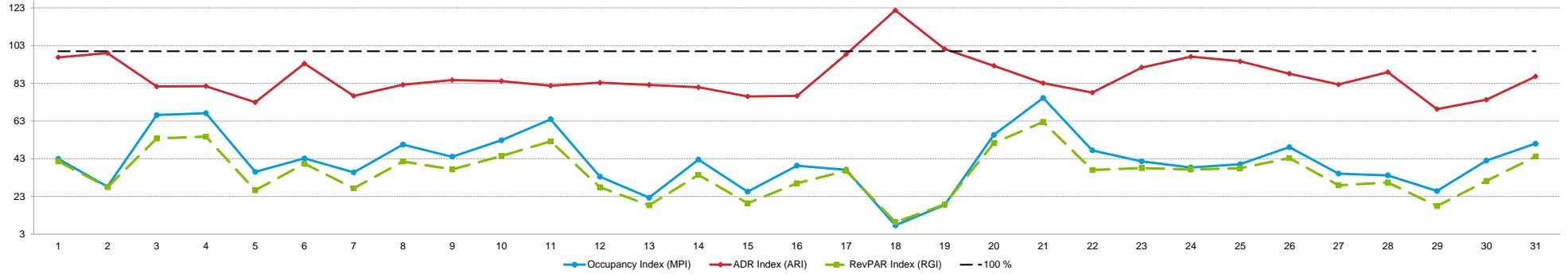
Tab 7 - Daily Data for the Month

Super 8 Imlay City 6951 Newark Rd Imlay City, MI 48444-9784 Phone: (810) 724-8700

STR # 27974 ChainID: 03523 MgtCo: None Owner: None

For the Month of: January 2019 Date Created: February 20, 2019 Daily Competitive Set Data Excludes Subject Property

Daily Indexes for the Month of January



Occupancy (%)	January																														
	Tu	We	Th	Fr	Sa	Su	Mo	Tu	We	Th	Fr	Sa	Su	Mo	Tu	We	Th	Fr	Sa	Su	Mo	Tu	We	Th	Fr	Sa	Su	Mo	Tu	We	Th
My Property	11.7	11.7	46.7	46.7	18.3	13.3	18.3	25.0	21.7	26.7	26.7	15.0	5.0	21.7	13.3	20.0	15.0	3.3	10.0	20.0	25.0	23.3	16.7	16.7	20.0	28.3	11.7	18.3	11.7	16.7	18.3
Competitive Set	27.1	41.4	70.5	69.5	50.8	30.8	51.2	49.5	49.2	50.5	41.7	44.7	22.4	50.8	52.2	50.8	40.3	43.4	53.9	35.9	33.2	49.2	40.0	43.4	49.8	57.6	33.2	53.6	45.1	39.7	35.9
Index (MPI)	43.0	28.2	66.2	67.2	36.1	43.2	35.8	50.5	44.1	52.8	64.0	33.5	22.3	42.6	25.5	39.3	37.2	7.7	18.6	55.7	75.3	47.5	41.7	38.4	40.1	49.2	35.1	34.2	25.9	42.0	51.0

% Chg	January																														
	Tu	We	Th	Fr	Sa	Su	Mo	Tu	We	Th	Fr	Sa	Su	Mo	Tu	We	Th	Fr	Sa	Su	Mo	Tu	We	Th	Fr	Sa	Su	Mo	Tu	We	Th
My Property	-68.2	-53.3	-40.4	-33.3	-72.5		-8.3	-16.7	-23.5	-11.1	14.3	-43.8	-81.3	-31.6	-42.9	9.1	0.0	-84.6	-45.5	71.4	15.4	0.0	0.0	-44.4	-45.5	-10.5	-56.3	-31.3	-50.0	66.7	-26.7
Competitive Set	-20.8	-9.6	-11.9	-14.9	-27.2	2.2	-7.4	-19.3	-9.9	-15.8	-33.9	-32.0	-41.6	-6.8	-13.5	-20.2	-36.7	-20.0	-13.6	11.6	-29.5	-16.7	-24.8	-13.5	-26.9	-4.0	-10.1	1.9	-25.7	-31.6	-24.3
Index (MPI)	-59.8	-48.4	-32.4	-21.6	-62.2		-1.0	3.3	-15.1	5.6	72.8	-17.3	-67.9	-26.6	-34.0	36.7	58.0	-80.8	-36.9	53.6	63.7	20.0	33.1	-35.8	-25.4	-6.8	-51.3	-32.6	-32.7	143.6	-3.1

ADR	January																														
	1	2	3	4	5	6	7	8	9	10	11	12	13	14	15	16	17	18	19	20	21	22	23	24	25	26	27	28	29	30	31
My Property	71.03	76.42	87.35	89.15	82.22	72.13	63.92	64.17	65.55	69.23	75.33	74.50	62.99	62.59	63.36	62.05	76.29	110.95	95.65	70.72	61.21	60.09	71.43	75.40	79.31	78.42	65.71	70.48	57.57	63.01	67.91
Competitive Set	73.39	77.16	107.48	109.36	112.71	77.16	83.75	78.03	77.37	82.25	92.15	89.44	76.65	77.38	83.32	81.31	77.53	91.15	94.50	76.59	73.65	76.99	78.15	77.63	83.79	88.97	79.80	79.23	83.05	84.82	78.37
Index (ARI)	96.8	99.0	81.3	81.5	72.9	93.5	76.3	82.2	84.7	84.2	81.7	83.3	82.2	80.9	76.0	76.3	98.4	121.7	101.2	92.3	83.1	78.0	91.4	97.1	94.7	88.1	82.3	89.0	69.3	74.3	86.7

% Chg	January																														
	1	2	3	4	5	6	7	8	9	10	11	12	13	14	15	16	17	18	19	20	21	22	23	24	25	26	27	28	29	30	31
My Property	20.9	23.1	33.6	31.6	-7.9		4.9	-0.2	5.2	4.5	10.9	8.9	4.2	6.1	7.9	-1.9	19.0	52.1	37.0	3.6	-3.4	-4.8	11.4	12.1	11.3	20.0	0.5	1.9	-3.4	0.0	7.1
Competitive Set	-4.1	-5.8	-2.4	-2.6	7.4	-4.3	-1.7	-2.3	-6.7	-3.4	0.4	0.1	-6.6	-2.7	2.9	-1.0	-9.7	8.5	7.3	-2.8	-8.2	-4.7	-2.5	-2.4	-6.2	5.6	-2.5	4.0	1.6	7.1	-1.8
Index (ARI)	26.2	30.7	36.9	35.1	-14.2		6.7	2.1	12.8	8.2	10.5	8.8	11.6	9.1	4.8	-0.9	31.8	40.2	27.7	6.5	5.2	-0.1	14.3	14.8	18.7	13.6	3.1	-2.1	-4.9	-6.6	9.0

RevPAR	January																														
	1	2	3	4	5	6	7	8	9	10	11	12	13	14	15	16	17	18	19	20	21	22	23	24	25	26	27	28	29	30	31
My Property	8.29	8.92	40.76	41.60	15.07	9.62	11.72	16.04	14.20	18.46	20.09	11.18	3.15	13.56	8.45	12.41	11.44	3.70	9.57	14.14	15.30	14.02	11.90	12.57	15.86	22.22	7.67	12.92	6.72	10.50	12.45
Competitive Set	19.90	31.91	75.78	76.00	57.31	23.80	42.87	38.62	38.03	41.54	38.42	40.02	17.15	39.34	43.50	41.34	31.27	39.55	50.93	27.52	24.47	37.84	31.26	33.68	41.75	51.27	26.51	42.43	37.44	33.64	28.16
Index (RGI)	41.6	27.9	53.8	54.7	26.3	40.4	27.3	41.5	37.3	44.4	52.3	27.9	18.4	34.5	19.4	30.0	36.6	9.4	18.8	51.4	62.5	37.0	38.1	37.3	38.0	43.3	28.9	30.5	17.9	31.2	44.2

% Chg	January																														
	1	2	3	4	5	6	7	8	9	10	11	12	13	14	15	16	17	18	19	20	21	22	23	24	25	26	27	28	29	30	31
My Property	-61.5	-42.5	-20.4	-12.3	-74.7		-3.8	-16.8	-19.5	-7.1	26.7	-38.8	-80.5	-27.4	-38.3	7.0	19.0	-76.6	-25.3	77.5	11.4	-4.8	11.4	-37.7	-39.3	7.3	-56.0	-30.0	-51.7	66.7	-21.4
Competitive Set	-24.1	-14.9	-14.0	-17.1	-21.8	-2.2	-8.9	-21.2	-16.0	-18.7	-33.6	-31.9	-45.5	-9.4	-10.9	-21.0	-42.8	-13.2	-7.3	8.5	-35.3	-20.6	-26.7	-15.6	-31.4	1.4	-12.4	6.1	-24.5	-26.7	-25.6
Index (RGI)	-49.3	-32.5	-7.5	5.9	-67.6		5.6	5.5	-4.2	14.2	90.9	-10.1	-64.2	-19.9	-30.8	35.5	106.2	-73.0	-19.4	63.7	72.1	19.9	52.1	-26.3	-11.5	5.8	-49.8	-34.0	-36.0	127.4	5.6



## How can we assist you?

### **Glossary:**

For all STR definitions, please click here or visit [www.str.com/resources/glossary](http://www.str.com/resources/glossary)

### **Frequently Asked Questions (FAQ):**

For all STR FAQs, please click here or visit [www.str.com/resources/faq](http://www.str.com/resources/faq)

Please visit our website at [www.str.com](http://www.str.com), or if you need additional assistance please reach out to our Customer Support team.

#### North America:

735 East Main Street, Hendersonville, TN 37075 USA

T : +1 615 824 8664

[support@str.com](mailto:support@str.com)

#### International:

Blue Fin Building, 110 Southwark Street, London SE1 0TA

T : +44 (0) 207 922 1930

[hotelinfo@str.com](mailto:hotelinfo@str.com)

#### Asia Pacific:

Thong Teck Building, 15 Scotts Road #08-12, 228 218 Singapore

T: +64 6800 7850

[apinfo@str.com](mailto:apinfo@str.com)

For the latest in industry news, visit [HotelNewsNow.com](http://HotelNewsNow.com).

To learn more about the Hotel Data Conference, visit [HotelDataConference.com](http://HotelDataConference.com).