



Stallion Air Inc.

High Pressure Breathing Air Equipment



“Work Horses of the Breathing Air Industry”

Pegasus Compressor

The **Pegasus** vertically enclosed compressor is a full-featured system that incorporates the latest technology and features to insure ease of operation and system longevity. The **Pegasus** compressor is designed to provide smooth, quiet operation in areas where floor space is limited, or where elevated controls are desired. When you purchase a Pegasus, you can be assured that you are purchasing a system that is built to perform, and built to last.



Standard Pegasus features include:

- 6000 psi - select from 7.5 to 25 horsepower.
- Purification system matched to compressor output
- Fully enclosed cabinet for quiet operation
- Latching service access doors
- Color, touch-screen operator interface for simple, automated operation and monitoring with shut-down alarms and on-screen status messages
- Stallion Sample Tap System (STS) for easy air sample retrieval

Standard Dimensions:

44"W 34-¹/₈"D 74-⁵/₈"H

*The **Stallion compressor control system** is sophisticated, yet simple to use. It provides several standard feature choices, including:*

- Passcode protected user access
- Selectable warnings, reminders and alarms
- Programmable, dual shutdown pressures
- Automated restart or shutdown without restart

Optional Pegasus features:

- CO Monitor
- Moisture monitor
- Spring Rewind Hose Reel Module (50', 75' or 100')
- Comprehensive electronic interstage monitoring
- Connectivity package (email or text alerts for system status changes or malfunctions)

Gidran Compressor

The Gidran is a ruggedly built, horizontally configured, breathing air compressor preferred by high volume industrial users. It is designed for use in tough environments where dependability, ease of maintenance and comprehensive protection are essential. The Gidran provides all this *plus* an appealing appearance. It is fully featured, offering the same control sophistication and ease of operation as the Pegasus. Like the Pegasus, it is protected by a fully enclosed cabinet. The cabinet provides comprehensive protection as well as an eye-catching appearance that makes the Gidran equally at home in a fire department. If you want a rugged, enclosed system but can't accommodate the height of the Pegasus, the Gidran may be the solution for you.



Standard Gidran features include:

- 6000 psi - select from 7.5 to 25 horsepower.
- Purification system matched to compressor output
- Fully enclosed cabinet for complete protection
- Latching service access door
- Color, touch-screen operator interface for simple, automated operation and monitoring with shut-down alarms and on-screen status messages
- Stallion Sample Tap System (STS) for easy air sample retrieval

Standard Dimensions

7.5 & 10 HP - 61-³/₁₆"W 41-⁷/₈"D 40-³/₁₆"H
15, 20 & 25 HP - 70-¹/₈"W 41-⁷/₈"D 48-⁹/₁₆"H

The **Stallion compressor control system** is *sophisticated, yet simple to use. It provides several standard feature choices, including:*

- Passcode protected user access
- Selectable warnings, reminders and alarms
- Programmable, dual shutdown pressures
- Automated restart or shutdown without restart

Optional Gidran features:

- CO Monitor
- Moisture monitor
- Comprehensive electronic interstage monitoring
- Connectivity package (email or text alerts for system status changes or malfunctions)

Percheron Compressor

Stallion offers the Percheron for applications in which space is at a premium and access doors would be unusable. While this unit performs perfectly in a stationary application, its open design, low center of gravity and modular components provide the installation flexibility and ease of maintenance that is necessary for vehicular installations. These horizontally configured compressors incorporate all the Stallion features and technology our customers have come to expect.

Standard Percheron features include:

- 6000 psi - select from 7.5 to 25 horsepower.
- Purification system matched to compressor output
- Modular components that provide multiple configuration options, including remote location of components and controls
- Color, touch-screen operator interface for simple, automated operation and monitoring with shut-down alarms and on-screen status messages
- Stallion Sample Tap System (STS) for easy air sample retrieval

Standard Dimensions

- 7.5 & 10 HP** - 59-⁷/₈"W 33-⁷/₈"D 43"H
15, 20 & 25 HP - 75-³/₁₆"W 28-¹/₂"D 51-⁹/₁₆"H



Optional Percheron features:

- CO Monitor
- Moisture monitor
- Comprehensive electronic interstage monitoring
- Connectivity package (email or text alerts for system status changes or malfunctions)

*The **Stallion compressor control system** is sophisticated, yet simple to use. It provides several standard feature choices, including:*

- Passcode protected user access
- Selectable warnings, reminders and alarms
- Programmable, dual shutdown pressures
- Automated restart or shutdown without restart

Stationary Containment Fill Enclosures

Stallion **Stationary Containment Fill Enclosures** provide an aesthetically pleasing solution to adding a certified cylinder refill station to your facility. Whether you are upgrading your existing system or purchasing as a component along with a Stallion compressor, these packages will help you organize your air system.

SACF2G2 (Not Shown)

- 2 Position Fill Station
- Accepts up to 3 ASME or ISO Storage Vessels

Standard Dimensions

40-5/8"W 34-1/8"D 71-7/8"H

SACF2-4G2 (Not Shown)

- 2 Position Fill Station
- Accepts up to 4 ASME or ISO Storage Vessels

Standard Dimensions

50-5/8"W 34-1/8"D 71-7/8"H

SACF3G2

- 3 Position Fill Station
- Accepts up to 4 ASME or ISO Storage Vessels

Standard Dimensions

50-5/8"W 34-1/8"D 71-7/8"H

Shown with Stallion Autofill System

In addition to being NFPA 1901 2016 compliant and UL Classified fill enclosures, these packages also provide an air management panel and storage vessel mounting rack inside of the cabinet. The storage vessel rack will accommodate either ASME or ISO vessels.

The cabinets and panels of the fill enclosures are constructed to compliment the cabinetry of **Pegasus** and **Gidran** compressors. This gives your system the "matching appliance" look.

Do you need to fill cylinders remotely? Not a problem! Stallion air management panels include a remote hose connection port and control valve as a standard item. Additionally, a hose reel module can be added to these fill enclosures and integrated into the air management panel.

Stallion **Stationary Containment Fill Enclosures** do not rely on complicated pneumatic controls to open or close the door. The door mechanisms are mechanical and balanced to provide easy opening and closing. The door latch mechanism is redundant and integrated into the door handle. No secondary latch mechanism is necessary.

Filling 1 hour SCBAs and SCUBA tanks is not a problem for the Stallion **Stationary Containment Fill Enclosures**. The fill enclosure accommodates cylinders greater than 31" long. The fill enclosure door has a two-stage opening feature. One stage allows for ergonomic loading, the other stage positions the bottle connections at an ergonomic work height.

Standard features include:

- 2 or 3 position NFPA 1901 2016 compliant containment fill enclosure
- Integrated ASME / ISO storage vessel vertical mounting rack
- "Bulk" air management panel, with remote fill port/ valve
- Latching service access doors

Optional features include:

- "Cascade" air management panel
- **Stallion Auto-Fill system** *
- ASME or ISO Storage Vessels
- Spring Rewind Hose Reel Module (50', 75' or 100')
- Remote compressor operation screen
- Connections for remote storage cylinders

* see page 7 for details



Mobile Containment Fill Enclosures

Stallion Mobile Containment Fill Enclosures are independently tested in compliance with NFPA 1901 2016 standards. Stallion Fill enclosures are UL Classified products. These enclosures have a front-to-back depth less than 21" making them ideal for mounting in apparatus compartments. The adjustable door opening height accommodates various apparatus floor-to-ground heights by opening to approximately 90°. The balanced door also incorporates a two-stage opening design that allows for ergonomic cylinder loading, as well as easy cylinder connection. The door closure and latch mechanisms are completely mechanical and do not require pneumatic pressure for operation. The door is self-latching with redundant mechanisms. The latch release mechanism is integrated into the handle and, therefore, requires no secondary mechanism for latch operation. The fill enclosures will accommodate cylinders that exceed 31" in length. An internally or externally mounted safety valve ensures that fill whips cannot be charged with the door open.



SACF3MG2 (43-1/16"W 20-7/8"D 39-1/2"H)

SACF2MG2 (32-7/8"W 20-7/8"D 39-1/2"H)



SACF2MG2
(Shown with custom 4 bank
air control panel shown.)

Centaur

Stallion **Centaur** models integrate all components of a cylinder refill system into a single, turn-key package, including a compressor, air storage vessel(s), purification system, air management panel and a containment fill station.

Centaur2G2 (Not Shown)

- 2 Position Fill Station
- Accepts up to 3 ASME or ISO Storage Vessels

Standard Dimensions

83-7/8"W 34-1/8"D x 74-5/8"H

Centaur2-4G2 (Not Shown)

- 2 Position Fill Station
- Accepts up to 4 ASME or ISO Storage Vessels

Standard Dimensions

93-7/8"W 34-1/8"D 74-5/8"H

Centaur3G2

- 3 Position Fill Station
- Accepts up to 4 ASME or ISO Storage Vessels

Standard Dimensions

93-7/8"W 34-1/8"D 74-5/8"H

Centaur models are defined by the capacity of the fill station and the number of storage vessels that can be mounted in the cabinet. The **Centaur 2** is the smallest of the series and is frequently chosen when space is a consideration. The **Centaur 2-4** and **Centaur 3** are equal in size, but offer expanded capabilities over the **Centaur 2**.

Standard Centaur features include:

- 6000 psi - select from 7.5 to 25 horsepower.
- "Bulk" air management panel, with remote fill port / valve
- 2 or 3 position containment fill enclosure
- Purification system matched to compressor output
- Fully enclosed cabinet for quiet operation
- Latching service access doors
- Color, touch-screen operator interface for simple, automated operation and monitoring with shut-down alarms and on-screen status messages
- Stallion Sample Tap System (STS) for easy air sample retrieval

Optional Centaur features:

- "Cascade" air management panel
- Stallion Auto-Fill system *
- Additional ASME or ISO Storage Vessels
- CO Monitor
- Moisture monitor
- Spring Rewind Hose Reel Module (50', 75' or 100')
- Comprehensive electronic interstage monitoring
- Connectivity package (email or text alerts for system status changes or malfunctions)
- Connections for remote storage cylinders

* see page 7 for details



Centaur 3 shown with Stallion Autofill & Hose Reel

Stallion Auto-Fill System

The **Stallion Auto-Fill System** utilizes a proprietary precision valve system, pressure transducers, a logic controller and a color touch screen to perform all functions of a typical “cascade” air control panel. The defining attribute of the system is the ability to provide constant, precise fill rate control. The screen graphics allow the operator to see all functions as they are happening in real time. An operator simply presses the “Start” key, and selects the fill pressure.



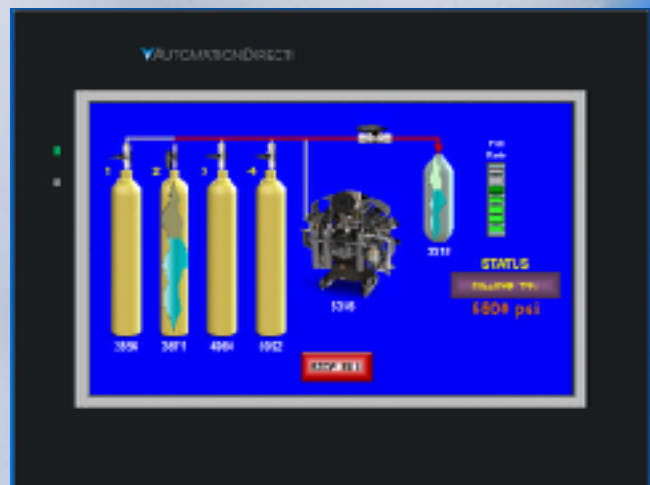
The **Stallion Auto-Fill System** can be incorporated into panels having full manual redundancy, or be used independently. **Stallion Auto-Fill System** is an available option on **Centaur** systems and **Stationary Containment Fill Enclosures**. It can also be integrated into air management panels for use on mobile systems. The **Stallion Auto-Fill System** can be configured for use on systems with or without a compressor. It can be used with 3 bank or 4 bank cascade systems.

The Stallion Auto-Fill System performs the following functions:

- “Cascade” storage bank usage
- Cylinder filling from the compressor
- Storage bank refill
- Fill pressure control
- Fill rate control

The Administrative features within the Stallion Auto-Fill System allows the following elements to be pre-determined:

- User passcodes
- Cylinder pressure selection
- Allowable overfills
- Fill rates



Air Storage

There are typically two styles of storage cylinders available in the breathing air market. The ISO cylinders are a more economical choice than the ASME cylinders. The ISO storage cylinders will require a 10 year recertification whereas the ASME cylinders have no recertification requirements. The ASME cylinders have more related hardware attached to the cylinders that will require service or replacement in the future.



Model	Cylinders	Bulk	Cascade	PSI	CF
6000I2B	2	✓		6000	1020
6000I2C	2		✓	6000	1020
6000I3B	3	✓		6000	1530
6000I3C	3		✓	6000	1530
6000I4B	4	✓		6000	2040
6000I4C	4		✓	6000	2040

- ISO Cylinders require a 10 year recertification.
- The 6000 psi cylinder weigh 195 lbs. dry
- Cylinder rated at 510 cf @ 6000 psi
- Storage Racks and larger quantities, than listed above, are available.
- ISO Storage Systems are also available at 4500 and 5000 psi

Model	Cylinders	Bulk	Cascade	PSI	CF
6000A2B	2	✓		6000	982
6000A2C	2		✓	6000	982
6000A3B	3	✓		6000	1473
6000A3C	3		✓	6000	1473
6000A4B	4	✓		6000	1964
6000A4C	4		✓	6000	1964

- ASME Cylinders have no recertification requirement
- The ASME Cylinder weighs 400 lbs. dry
- Cylinder rated at 491 cf @ 6000 psi
- ASME Cylinders require a certified ASME Relief Valve
- Storage Racks and larger quantities, than listed above, are available



Stallion Air Trailer (SAT)

The SAT houses a generator, compressor and fill station with multiple air storage vessels in a compact, but efficient design allowing the SAT to be set up anywhere that it can be towed. The SAT can be set up at the scene of an incident and generate its own power from an appropriately sized, stand-alone diesel 3 phase generator to process air and to recharge breathing air bottles. The SAT can be powered by an optional shoreline with transfer switch while at the station.



The SAT is a totally enclosed enhanced trailer equipped with:

- (2) 5,000lb torsion axles,
- (2) 500 watt halogen hand pole lights
- Dual roll up aluminum doors
- Fold down rear door,
- Side entrance door.
- The SAT is designed with 2 compartments that separate the mechanical room from the SCBA recharging room.

The mechanical room is equipped with your choice of Percheron compressor, and a diesel generator that is sized appropriately for the installed equipment. As well as 120 VAC LED interior lighting and receptacles.



Roll up doors on the sides of the SAT allow instant access to the controls for the generator, as well as the compressor. This will allow for operation from outside of the SAT. Reducing time near the operational equipment and increasing safety.

Stallion Air Trailer (SAT)



The SCBA recharging room is designed to house the fill station, storage vessels, and optional hose reel and SCBA storage rack. As well it is equipped with 120 VAC LED interior lighting and receptacles.

The SCBA recharging room can be equipped with a multitude of features and options:

- 2 position Fill Station (standard)
- 3 position Fill Station (optional)
- (4) 6000psi ISO cylinders (standard)
- (4) 6000psi ASME cylinders (optional)
- 4 bank regulated air control panel (standard)
- Stallion Auto Fill (optional)
- Secondary compressor control screen (standard)
- Spring rewind hose reel assembly (50ft, 75ft, 100ft optional)
- Vertical drop SCBA storage rack (optional)



The optional vertical drop SCBA rack can be installed in the SCBA charging room for storage. 12-15 vessel options.

Distributed By:



Assembled in
USA

Phone: 336-824-3133
Fax: 336-824-3233

PO Box 337
Ramseur NC, 27316

www.stallionair.com