

## Northern California Manufacturers Line Card



Heat Sinks: Bonded Fin, Liquid Cold Plates, Precision Temperature Control Liquid Cooling System, Integrated Heat Pipe Assemblies, Folded Fin Assemblies, Forced Convection Coolers. DC Brushless Fans & Blowers.

<http://www.avid.com>



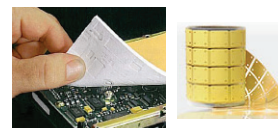
Specialized contract manufacturing, ODM, DFM and DFT services. Partnered with the leaders in these markets, we develop new products for emerging technologies that enable high speed communications. For over 60 years, we've used our superior, high-volume manufacturing techniques and processes to deliver quality products to the global marketplace.

<http://www.belfuse.com>



Sil-Pad; Thermally Conductive Interface Materials, Bond Ply & Liqui-bond; Thermally Conductive Adhesives, Gap pads; Thermally Conductive Gap Filling Materials, Hi-Flow; Phase Change Interface Materials, TIC; Thermal Interface Compounds, Thermal Clad; PCB with Insulated Metal Substrates.

<http://www.bergquistcompany.com>



Protective Products: Plastic, Vinyl & Rubber Caps, Plugs, Tubing, Containers, Netting, Wraps and Edge Liners Precision Masking Products.

<http://www.caplugs.com>



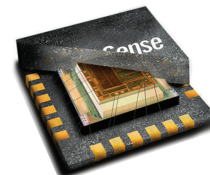
Circuit Board Indicators, Prism, Lightpipes, Surface Mount LED Indicators, LED Panel Mount Indicators, Neon/Incandescent, Military-Qualified Indicators & Optical Lenses.

<http://www.dialight.com>



The world's leading provider of MEMS sensor platforms. The company's patented InvenSense Fabrication Platform and MotionFusion® technology address the emerging needs of many mass-market consumer applications via improved performance, accuracy, & intuitive motion, gesture and sound-based interfaces. InvenSense technology can be found in Mobile, Wearables, Smart Home, Industrial, and Automotive products.

<http://www.invensense.com>



## Your Northern California Premier Manufacturers Representative



Use a mobile phone and a QR Code tag reader to get additional information about Luscombe Engineering.

© 2017 L2, An LECC Company 5/1/2017

**View our Distribution Partners on back page**



Member ERA  
<http://www.era.org>

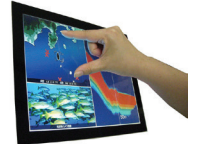
**Northern California Manufacturers Line Card**



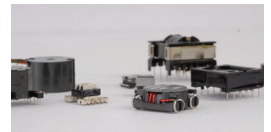
Connectors: Circular, Compact Flash, D Subminiature, Fiber Optic, Filter, Hermetic, Harsh Environment & Oil, Media & Memory, Microminiature, Mobile Communications, Plastic/Universal, Printed Circuit Board, Rack & Panel, RF, Smart Card, Transportation, USB/FireWire, Zero Insertion Force.  
<http://www.ittcannon.com>



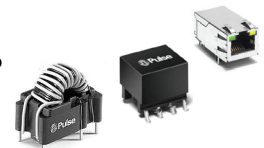
Mitsubishi Electric's thin film transistor liquid crystal display (TFT-LCD) panels & modules are produced utilizing advanced imaging & color reproduction technologies & come in a variety of sizes from 2" to 19". Our integrated assembly method also allows us to provide touch panel options for our LCD modules.  
<http://www.mitsubishielectric.com>



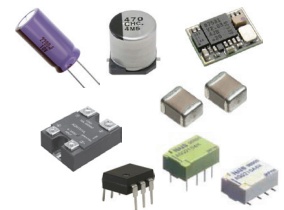
Innovative engineering, precise manufacturing and unparalleled quality systems makes Noreast Electronics an industry leader in the development of custom magnetics and electro-mechanical assemblies. Leading edge components for industrial, military, avionics and alternative energy, Noreast has over 35 years experience providing custom solutions to industry leaders.  
<http://www.noreast.ca/>



Inductors, transformers, current sense magnetics, common mode chokes. LAN magnetics, PulseJack ICMs for 10BASE-T, up to 10GBase-T, plus VoIP and PoE+ applications. Connectors include RJ45, RJ11, keystone jack CAT4e/6, SFP+ and XFP connectors cages. Antennas: internal, external, indoor, and outdoor (Wi-Fi, BLE, LTE, GPS – Dual-band, Multi-band).  
<http://www.pulseelectronics.com/>



Electrolytic, Polymer, Film, Hybrid, & SP-Capacitors. Resistors, Chip Inductors, Filters & Resonators. Electromechanical Devices: Slide, Light-touch Switches & Encoders. RF modules for Bluetooth, SNAP, ISM & Wi-Fi. Relays: Signal, High Frequency, Power, Automotive, Solid State, PhotoMOS. Sensors: Passive IR, Napica Light Sensors, Motion Sensors.  
<http://na.industrial.panasonic.com>



LED Components: High Power, Low Power, Chip-Scale Package (CSP), Chip-On-Board (COB). Automotive LEDs (AEC-Q101 qualified & meets ECE automotive color requirements). LED Engines: Ambient, Outdoor, Downlight. LED Drivers: Indoor and Outdoor from 15 watts – 200 watts. Wireless Smart Lighting Solutions.  
<http://www.samsungled.com>



**Your Northern California Premier Manufacturers Representative**

**San Jose Office**  
2010 N. First Street, Suite #330  
San Jose, CA 95131  
(408) 453-5000

**Sacramento Office**  
6320 Belleau Wood Lane, Suite #6  
Sacramento, CA 95814  
(916) 765-2484