

Pacific Northwest Manufacturers Line Card



BOX PC, Rugged Tablet PC, Embedded Computing, Mobile Computing, Industrial Automation, Business Automation, Network Communication. With full spectrum of embedded computing product line, speedy customized capabilities and quick response to the newest evolution of information technology, Arbor Technology helps you deliver your services faster than ever.
<http://www.arbor.com.tw> • arbor@lec-nw.com
 Territories: Washington / Oregon / Idaho / British Columbia



Switches: Tact, Slide, Rocker, Detect, Toggle, DIP, Rotary, Dome, Key, Push-Button, Thumbwheel, NAV-Switch
<http://www.ckswitches.com> • candk@lec-nw.com
 Territories: Washington / Oregon / Northern Idaho



Circuit Board Indicators, Prism, Lightpipes, Surface Mount LED Indicators, LED Panel Mount Indicators, Neon/Incandescent, Military-Qualified Indicators & Optical Lenses.
<http://www.dialight.com> • dialight@lec-nw.com
 Territories: Washington / Oregon / Idaho / Montana



From cylindrical tuning fork crystals to high stability oven controlled oscillators, ECS, Inc. offers the most comprehensive line up of frequency control devices in the industry. Crystals, ECSpresCON, Oscillators, Resonators, Filters, TCXO/VCXO and more.
<https://www.ecsxtal.com> • ecs@lec-nw.com
 Territories: Washington / Oregon / Northern Idaho /



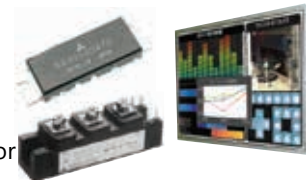
IBASE is a manufacturer of industrial computer, panel PC, motherboard, SBC, embedded system, digital signage player, video wall player, railway computer system, RISC platform and network appliance in the Industrial PC market. Specializing in OEM/ODM services, IBASE carries out manufacturing and quality control at its own production sites in Taiwan that are certified to meet ISO 9001, ISO 13485 and ISO 14001 standards.
<https://www.ibase.com.tw/index.php> • ibase@lec-nw.com
 Territories: OR / WA / ID / British Columbia / Alberta / Saskatchewan / Manitoba



Connectors: Circular, Compact Flash, D Subminiature, Fiber Optic, Filter, Hermetic, Harsh Environment & Oil, Media & Memory, Microminiature, Mobile Communications, Plastic/Universal, Printed Circuit Board, Rack & Panel, RF, Smart Card, Transportation, USB/FireWire, Zero Insertion Force.
<http://www.itt.com> • itt@lec-nw.com
 Territories: Washington / Oregon / Idaho



GaAs Microwave/RF: Low-noise FET and HEMT. L/S, C, XKU Internally Matched Power FETs, Hybrid ICs for mobile phone and Wireless Access. GaN HEMT for space and commercial Freq 3.7 – 4.2 GHz, Output Power in 2 / 20 / 40/100 W matched modules and discretes. Silicon RF Power Modules: Low Power, High Power for UHF, VHF, 800MHz, 1.2GHz bands. Silicon RF Power MOSFET: HF/VHF/UHF/900MHz. Optoelectronics: 405, 638 and 808nm Laser Diode for Industrial, Information Processing & Instrumentation, and Displays, 1.25, 2.5, 8, 10 and 40G Laser Diodes photo diodes and ADPs in chip, TO package, MSA Tosa/Rosa and pigtail modules for FTTH, Ethernet, Sonet and CATV markets. Color TFT-LCDs for Industrial Use.
<http://www.mitsubishielectric.com> • mitsubishi@lec-nw.com
 Territories: Washington / Oregon / North Idaho / British Columbia / Alberta



Your Northwest Premier Manufacturers Representative



Use a mobile phone and a QR Code tag reader to get additional information about Luscombe Engineering.

© 2018 Luscombe Engineering 1/9/2018

View our Distribution Partners on back page



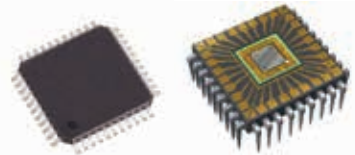
Pacific Northwest Manufacturers Line Card



Open-Silicon transforms ideas into system-optimized ASIC solutions within the time-to-market parameters desired by customers. The company applies an open business model that enables the company to uniquely choose best-in-industry IP, design methodologies, tools, software, packaging, manufacturing and test capabilities.

<http://www.opensilicon.com> • opensilicon@lec-nw.com

Territories: Washington / Oregon / Northern Idaho / British Columbia / Alberta



Electrolytic, Polymer, Film, Hybrid, & SP-Capacitors. Resistors, Chip Inductors, & EMI Filters. Electromechanical Devices: Light-touch Switches, Fine-pitch Connectors, & Encoders. RF modules for Bluetooth, SNAP, ISM, & Wi-Fi. Relays: Signal, High-Frequency, Power, Automotive, Solid State, & PhotoMOS. Passive IR Motion Sensors (PaPIRs & NaPiOn). Power CSP MOSFETs.

<http://na.industrial.panasonic.com> • panasonic@lec-nw.com

Territories: Washington / Oregon / North Idaho



Radian Heatsinks provides value-added thermal design solutions for the advanced microelectronics and components industries worldwide. All products supplied by Radian Heatsinks are RoHS-5 or RoHS-6 compliant.

<http://www.radianheatsinks.com> • radian@lec-nw.com

Territories: Washington / Oregon / Idaho



LED Components: High Power, Low Power, Chip-Scale Package (CSP), Chip-On-Board (COB). Automotive LEDs (AEC-Q101 qualified & meets ECE automotive color requirements). LED Engines: Ambient, Outdoor, Downlight. LED Drivers: Indoor and Outdoor from 15 watts – 200 watts. Wireless Smart Lighting Solutions.

<http://www.samsungled.com> • samsung@lec-nw.com

Territories: Washington / Oregon / Idaho / Montana / British Columbia



Sensirion is the leading manufacturer of high-quality sensors and sensor solutions for the measurement and control of humidity, and of gas and liquid flows. Sensors: Humidity, Temperature, Gas, PM2.5, CO2, Liquid Flow Meters, Mass Flow Meters and Controllers, Gas Meter Modules, and Differential Pressure Sensors.

<https://www.sensirion.com> • sesirion@lec-nw.com

Territories: Washington / Oregon / Idaho / Montana / British Columbia



SUNS is a leading manufacturer of high quality industrial control components. Our offering ranges from the widest variety in limit and micro switches to complete lines of foot switches, push buttons, and control stations.

<http://www.suns-usa.com/en/product.html> • (805) 764-6208 • suns@lecc.com



Your Northwest Premier Manufacturers Representative

Oregon Office

10300 SW Greenburg Road Suite 305
Portland, OR 97223
(503) 646-9079