



## Northern California Manufacturers Line Card

## Northern California Manufacturers Line Card



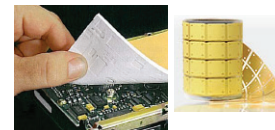
Abatek is a global leader for Automotive, Medical, Industrial & Communications Industries with roots in silicone rubber keypads, & sub-assemblies. Abatek's aggressive R&D has developed new surfaces (Polyform), Electrical Contacts (SC Pills), Light Guide Solutions, and other unique haptic solutions (ClickPad).  
<http://www.abatek.com/>



Specialized contract manufacturing, ODM, DFM and DFT services Partnered with the leaders in these markets, we develop new products for emerging technologies that enable high speed communications. For over 60 years, we've used our superior, high-volume manufacturing techniques and processes to deliver quality products to the global marketplace.  
<http://www.belfuse.com>



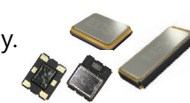
Sil-Pad; Thermally Conductive Interface Materials, Bond Ply & Liqui-bond; Thermally Conductive Adhesives, Gap pads; Thermally Conductive Gap Filling Materials, Hi-Flow; Phase Change Interface Materials, TIC; Thermal Interface Compounds, Thermal Clad; PCB with Insulated Metal Substrates.  
<http://www.bergquistcompany.com>



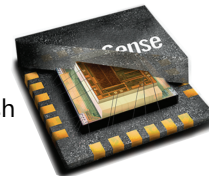
Circuit Board Indicators, Prism, Lightpipes, Surface Mount LED Indicators, LED Panel Mount Indicators, Neon/Incandescent, Military-Qualified Indicators & Optical Lenses.  
<http://www.dialightsignalsandcomponents.com/>



From cylindrical tuning fork crystals to high stability oven controlled oscillators, ECS, Inc. offers the most comprehensive line up of frequency control devices in the industry. Crystals, ECSpresCON, Oscillators, Resonators, Filters, TCXO/VCXO and more.  
<https://www.ecsxtal.com>



InvenSense, Inc: Now a wholly owned subsidiary of TDK Corporation. InvenSense is part of the Sensor System Business Company within TDK and is the industry leader in MEMS Motion, Audio, and Pressure Solutions for the consumer, industrial, automotive, and IoT market segments. With a very robust portfolio of MEMS 3/6/7/9 axis motion sensors, accompanied by the highest performing MEMS audio microphones, TDK continues to push the boundaries of performance and quality; setting new standards of innovation across multiple industries.  
<http://www.invensense.com>



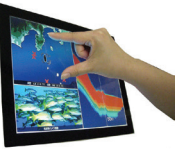
iBASE is a manufacturer of industrial computer, panel PC, motherboard, SBC, embedded system, digital signage player, video wall player, railway computer system, RISC platform and network appliance in the Industrial PC market.  
<https://www.ibase.com.tw/index.php>



Connectors: Circular, Compact Flash, D Subminiature, Fiber Optic, Filter, Hermetic, Harsh Environment & Oil, Media & Memory, Microminiature, Mobile Communications, Plastic/Universal, Printed Circuit Board, Rack & Panel, RF, Smart Card, Transportation, USB/FireWire, Zero Insertion Force.  
<http://www.ittcannon.com>



Mitsubishi Electric's thin film transistor liquid crystal display (TFT-LCD) panels & modules are produced utilizing advanced imaging & color reproduction technologies & come in a variety of sizes from 2" to 19". Our integrated assembly method also allows us to provide touch panel options for our LCD modules.  
[http://www.mitsubishielectric.com/semiconductors/products/tft\\_tech/index.html](http://www.mitsubishielectric.com/semiconductors/products/tft_tech/index.html)



Inductors, transformers, current sense magnetics, common mode chokes. LAN magnetics, PulseJack ICs for 10BASE-T, up to 10GBase-T, plus VoIP and PoE+ applications. Connectors include RJ45, RJ11, keystone jack CAT4e/6, SFP+ and XFP connectors cages. Antennas: internal, external, indoor, and outdoor (Wi-Fi, BLE, LTE, GPS - Dual-band, Multi-band).  
<http://www.pulseelectronics.com/>



Electrolytic, Polymer, Film, Hybrid, & SP-Capacitors. Resistors, Chip Inductors, & EMI Filters. Electromechanical Devices: Light-touch Switches, Fine-pitch Connectors, & Encoders. RF modules for Bluetooth, SNAP, ISM, & Wi-Fi. Relays: Signal, High-Frequency, Power, Automotive, Solid State, & PhotoMOS. Passive IR Motion Sensors (PaPIRs & NaPiOn). Power CSP MOSFETs.  
<https://na.industrial.panasonic.com/>



QuickLogic Corporation enables OEMs to maximize battery life for highly differentiated, immersive user experiences with Smartphone, Wearable and IoT devices. QuickLogic delivers these benefits through industry leading ultra-low power customer programmable SoC semiconductor solutions, embedded software, and algorithms for always-on voice and sensor processing.  
<https://quicklogic.com/>



LED Components: High Power, Low Power, Chip-Scale Package (CSP), Chip-On-Board (COB). Automotive LEDs (AEC-Q101 qualified & meets ECE automotive color requirements). LED Engines: Ambient, Outdoor, Downlight. LED Drivers: Indoor and Outdoor from 15 watts - 200 watts. Wireless Smart Lighting Solutions.  
<http://www.samsungled.com>



Sensirion is the leading manufacturer of high-quality sensors and sensor solutions for the measurement and control of humidity, and of gas and liquid flows. Sensors: Humidity, Temperature, Gas, PM2.5, CO2, Liquid Flow Meters, Mass Flow Meters and Controllers, Gas Meter Modules, and Differential Pressure Sensors.  
<https://www.sensirion.com>

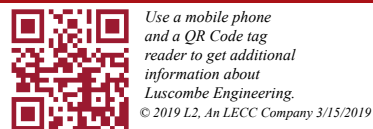


SUNS is a leading manufacturer of high quality industrial control components. Our offering ranges from the widest variety in limit and micro switches to complete lines of foot switches, push buttons, and control stations.  
<http://www.suns-usa.com/en/product.html>



Your Northern California Premier Manufacturers Representative

Your Northern California Premier Manufacturers Representative



**View our Distribution Partners on back page**



**San Jose Office**  
 2010 N. First Street, Suite #330  
 San Jose, CA 95131  
 (408) 453-5000

**Sacramento Office**  
 6320 Belleau Wood Lane, Suite #6  
 Sacramento, CA 95814  
 (916) 765-2484