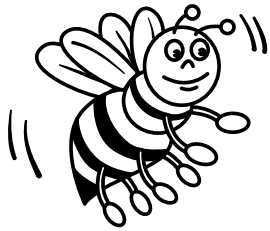


Practice

Spelling:
Words with
-ible, -able

Name _____

Fold back the paper along the dotted line. Use the blanks to write each word as it is read aloud. When you finish the test, unfold the paper. Use the list at the right to correct any spelling mistakes.



- | | |
|-----------|------------------|
| 1. _____ | 1. enjoyable |
| 2. _____ | 2. breakable |
| 3. _____ | 3. favorable |
| 4. _____ | 4. likable |
| 5. _____ | 5. usable |
| 6. _____ | 6. respectable |
| 7. _____ | 7. affordable |
| 8. _____ | 8. possible |
| 9. _____ | 9. unreasonable |
| 10. _____ | 10. laughable |
| 11. _____ | 11. comfortable |
| 12. _____ | 12. convertible |
| 13. _____ | 13. invisible |
| 14. _____ | 14. honorable |
| 15. _____ | 15. capable |
| 16. _____ | 16. sensible |
| 17. _____ | 17. unbelievable |
| 18. _____ | 18. bearable |
| 19. _____ | 19. collapsible |
| 20. _____ | 20. suitable |
| 21. _____ | 21. uniform |
| 22. _____ | 22. bicycle |
| 23. _____ | 23. triangle |
| 24. _____ | 24. manageable |
| 25. _____ | 25. tangible |

Review Words

Challenge Words

Practice

Spelling:
Words with
-ible, -able

Name _____

Using the Word Study Steps

1. LOOK at the word.
2. SAY the word aloud.
3. STUDY the letters in the word.
4. WRITE the word.
5. CHECK the word.
Did you spell the word right?
If not, go back to step 1.

honorable	favorable	invisible	likable
enjoyable	collapsible	laughable	suitable
breakable	unbelievable	sensible	possible
convertible	affordable	respectable	comfortable
usable	bearable	unreasonable	capable

A. Fill-Ins

Fill in the missing letters of each word to form a spelling word.

1. collaps _____ e
2. break _____ e
3. afford _____ e
4. us _____ e
5. bear _____ e
6. favor _____ e
7. cap _____ l _____
8. enjoy _____
9. honor _____ e
10. convert _____ e
11. invis _____ l _____
12. unreason _____ l _____
13. respect _____ e
14. sens _____ l _____
15. unbeliev _____ e
16. poss _____ l _____
17. suit _____ e
18. laugh _____
19. lik _____
20. comfort _____

B. Alphabetical Order

Use the lines below to write the spelling words in alphabetical order.

- | | | | |
|----------|-----------|-----------|-----------|
| 1. _____ | 6. _____ | 11. _____ | 16. _____ |
| 2. _____ | 7. _____ | 12. _____ | 17. _____ |
| 3. _____ | 8. _____ | 13. _____ | 18. _____ |
| 4. _____ | 9. _____ | 14. _____ | 19. _____ |
| 5. _____ | 10. _____ | 15. _____ | 20. _____ |

Practice

Spelling:
Words with
-ible, -able

Name _____

honorable
enjoyable
breakable
convertible
usable

favorable
collapsible
unbelievable
affordable
bearable

invisible
laughable
sensible
respectable
unreasonable

likable
suitable
possible
comfortable
capable

A. Sort each spelling word according to its ending. Then write the words on the lines below.

-able

- | | | |
|----------|-----------|-----------|
| 1. _____ | 6. _____ | 11. _____ |
| 2. _____ | 7. _____ | 12. _____ |
| 3. _____ | 8. _____ | 13. _____ |
| 4. _____ | 9. _____ | 14. _____ |
| 5. _____ | 10. _____ | 15. _____ |

-ible

- | | |
|-----------|-----------|
| 16. _____ | 19. _____ |
| 17. _____ | 20. _____ |
| 18. _____ | |

B. Make a Puzzle

Make up a puzzle of your own using the space on this page. Give it to someone else to solve. Be sure to include at least five spelling words in your puzzle.

Practice

Spelling:
Words with
-ible, -able

Name _____

honorable	usable	affordable	sensible	suitable
enjoyable	favorable	bearable	respectable	possible
breakable	collapsible	invisible	unreasonable	comfortable
convertible	unbelievable	laughable	likable	capable

A. Sentence Completions

Complete each sentence below with a spelling word. Use the word box to check your spelling.

1. Many tiny creatures are _____ to the human eye.
2. Dennis likes microscopes and thinks that looking through them is _____.
3. The scientists had a _____ tent that could fold up quickly.
4. Those delicate glass test tubes are _____, so be careful with them.
5. Dennis is a _____ scientist who can easily do many things.
6. That broken microscope is not _____ and needs to be fixed.
7. She is a _____ scientist because her work is always well researched.
8. Being a scientist is an _____ job because it helps future generations.
9. Some colleges are expensive, but others are more _____.
10. We had never seen so much ash before—it was _____!

B. Similar Meanings

Write the spelling word that has the same, or almost the same, meaning.

- | | |
|---------------------------------------|--------------------------------|
| 11. cozy _____ | 15. having good sense _____ |
| 12. pleasant _____ | 16. capable of happening _____ |
| 13. capable of being dealt with _____ | 17. funny _____ |
| 14. not practical _____ | 18. proper _____ |

A. Circle the misspelled words in the passage. Write the words correctly on the lines provided.

1. _____ 2. _____ 3. _____
4. _____ 5. _____ 6. _____

Write a paragraph about your favorite outdoor activity or school subject. Use four words from your spelling list.

This image shows a blank sheet of white paper with horizontal ruling lines. The lines are evenly spaced and extend across the width of the page. There are no margins, text, or other markings on the paper.

Practice

Spelling:
Words with
-ible, -able

Name _____

Look at the words in each set below. One word in each set is spelled correctly. Use a pencil to fill in the circle next to the correct word. Before you begin, look at the sample set of words. Sample A has been done for you. Do Sample B by yourself. When you are sure you know what to do, you may go on with the rest of the page.

Sample A:

- (A) invinceable
- (B) invincable
- (C) invincible
- (D) invinceible

Sample B:

- (E) dooible
- (F) doible
- (G) doable
- (H) dooable

- | | | | |
|---|--|--|--|
| 1. (A) collapseable
(B) collapseible
(C) collapsible
(D) collapsable | 6. (E) favoreable
(F) favorable
(G) favorable
(H) favoreible | 11. (A) invisible
(B) invisable
(C) invissible
(D) inivissable | 16. (E) possible
(F) possable
(G) posible
(H) posable |
| 2. (E) breakable
(F) breakible
(G) brakeable
(H) brakeible | 7. (A) capeible
(B) capeable
(C) capable
(D) capible | 12. (E) unreasonable
(F) unreasonible
(G) unreasonable
(H) unreasonnible | 17. (A) suitable
(B) suitable
(C) suiteable
(D) suiteible |
| 3. (A) affordable
(B) afordable
(C) affordible
(D) afordible | 8. (E) enjoyyible
(F) enjoyyable
(G) enjoyable
(H) enjoyable | 13. (A) respectable
(B) respectable
(C) respecttible
(D) respecttable | 18. (E) laghable
(F) laghible
(G) laughible
(H) laughable |
| 4. (E) usabel
(F) useible
(G) usable
(H) usable | 9. (A) honorable
(B) honorable
(C) honorrrable
(D) honorrible | 14. (E) senseable
(F) sensible
(G) senseible
(H) sensible | 19. (A) likeible
(B) likable
(C) likible
(D) likkable |
| 5. (A) bearible
(B) bearable
(C) bearrable
(D) bearrible | 10. (E) convertible
(F) convertable
(G) converttible
(H) converttable | 15. (A) unbelievable
(B) unbelieveible
(C) unbelieveable
(D) unbelievable | 20. (E) comforttable
(F) comforttible
(G) comfortible
(H) comfortable |

© Macmillan/McGraw-Hill