

SDAT: Central Falls

The World in a Square Mile



CENTRAL FALLS IS:

①
IMMIGRANTS
WORLD IN 1 MILE
DIVERSITY
SMALL & BIG
UP'N COMING AMBITIOUS
HAS A LOT OF GOOD REST
CITY OF DREAMS
RESILIENT
... THE FUTURE OF THIS COUNTRY,
CULTURAL HUB.
CITY OF OPPORTUNITY
60% COL.
FRIENDLY PEOPLE
... A WARRIOR
TALENTED USE (SPORTS)
PROUD
PROGRESSING
BEAUTIFUL MELTING POT
... THE PEOPLE

Vision Statement

*A safe, well-lit and navigable city, with attractive destinations and informed residents, will lead to increased economic and social opportunities for our community, and cultivate the richness of the Central Falls we all know and **LOVE** - the City of Dreams.*

PHYSICAL

- 1 Square Mile
- Walkability
 - 20 minutes from end to end
- Density
- City is the People
- Blackstone River



RECREATIONAL PARKS + PROGRAMS

- Variety of Parks
 - Island Park, Jenks Park, Veterans Park (others)
- Free access to Pawtucket Y
- Free summer swim program (McColl YMCA in Lincoln)
- Sports
 - Midnight basketball league
 - Track and field
 - Football and cheer



COMMUNITY EVENTS

- Salsa Nights
- Antique Auto Show
- Central Falls Walking Tours
- Shakespeare in the Park (Bilingual)
- Annual Christmas lighting
- Restaurant Week

Other Opportunities:

- Elm tree celebration
- Carnival



ARTS

- Murals
- Youth Arts + Theater
- Rhode Island Latino Arts

Other Opportunities:

- Traditional dancing
- Public art (utility poles)



Food

- Authentic (Local) Fare
 - Colombian
 - Brazilian
 - Cape Verdean
 - Salvadoran
 - Chinese
 - And so much more.....!

restaurantweekpcf.com

Mayor James A. Diosa
presents

CENTRAL FALLS RESTAURANT WEEK

A World of Flavors
in One Square Mile

Aug. 27- Sept. 2
2018

Breakfast and Lunch - \$7.99

Dinner - \$9.99

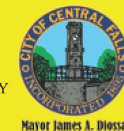
www.centralfallsri.us/RestaurantWeek

[www.facebook.com/
CityOfCentralFallsRI](https://www.facebook.com/CityOfCentralFallsRI)

401-616-2443—City of Central Falls



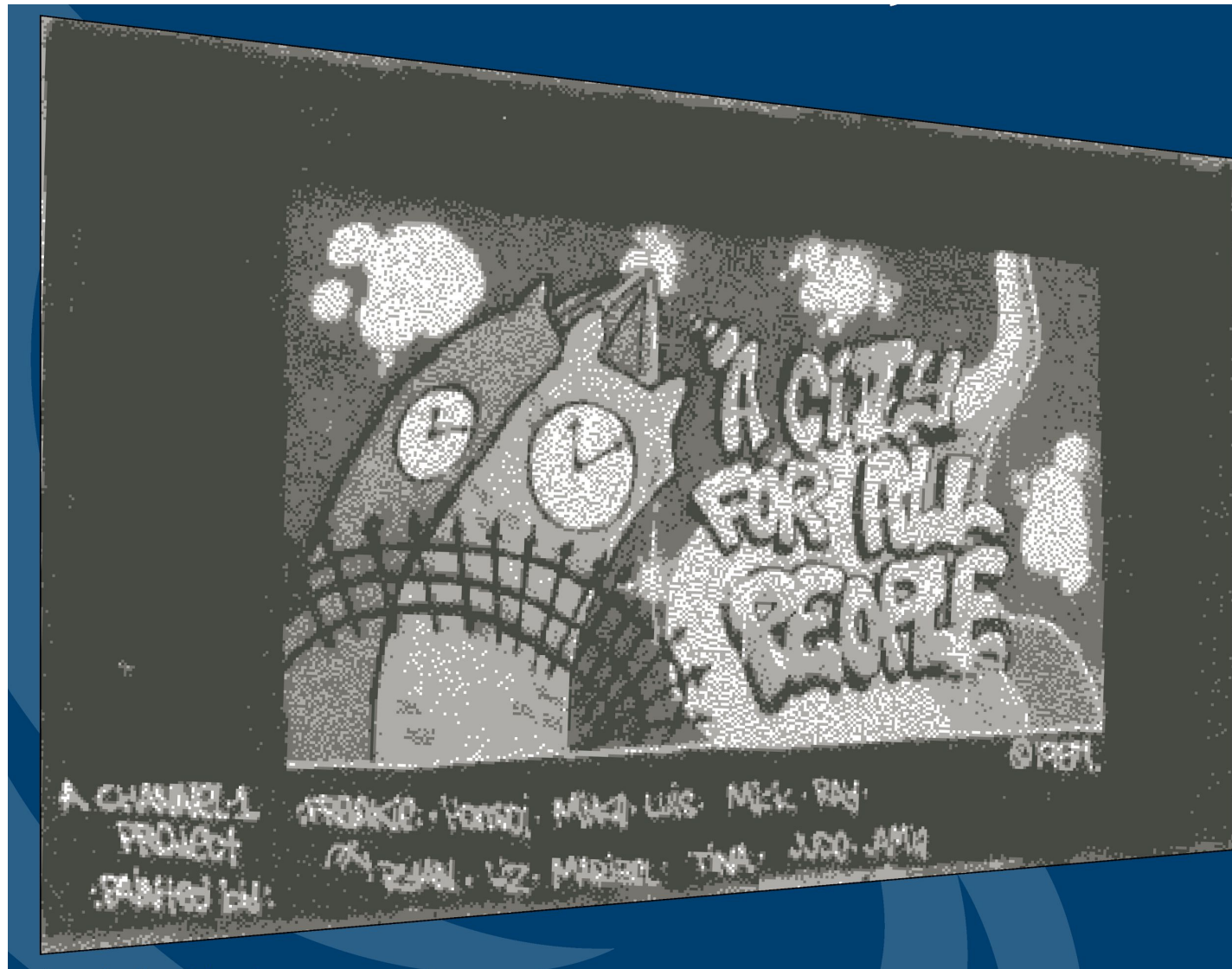
BLACKSTONE VALLEY
TOURISM COUNCIL



Mayor James A. Diosa

NAVIGANT
CREDIT UNION

COMMUNITY



Healthy Corridors

- Complete sidewalk network
- Visually interesting streetscapes
- Expand tree canopy
- Facade improvements
- Lighting that improves visibility
- Address perceptions of safety
- Neighborhood linkages



Building Trust + Community Engagement

- Community Liaison
 - Provide information on community resources + programs
- Community oriented policing
 - Community forums
 - Police and fire participation in neighborhood events
- Citizen volunteers
 - Neighborhood-based task force, seniors, etc.
 - Crime prevention, identifying public hazards, and other support

Preserving Community

- Protecting affordable housing
- Mixed-income neighborhoods
- Respecting cultures



TRAINING

“By the year 2020, more than 70 percent of jobs in Rhode Island will require some form of postsecondary education, but only 4 out of 10 Rhode Islanders meet that benchmark now. Of the 11.5 million jobs created nationally since 2010, only 80,000, or less than 1%, went to people with a high school diploma or less.” RI Dept of Education



Youth Pathways

- High School
 - Art Academy
 - Environmental Engineering
 - Health
 - Food
- Community College
- Technical Careers
- 4 year degrees



Adults

- GED
 - Progreso Latino
 - Rhode Island College
- Growth Industry Training
 - Construction
 - Health Sector
 - Food
- Unemployed or Underemployed Residents
 - Career bridges
 - Re-skilling workers



Financial Literacy

- Financial Literacy Nights
 - Financial Stability
 - Credit Counseling
 - Taxes
 - Running your own business
- Opportunities to partner with existing organizations



DESTINATION

“The world in one square mile”

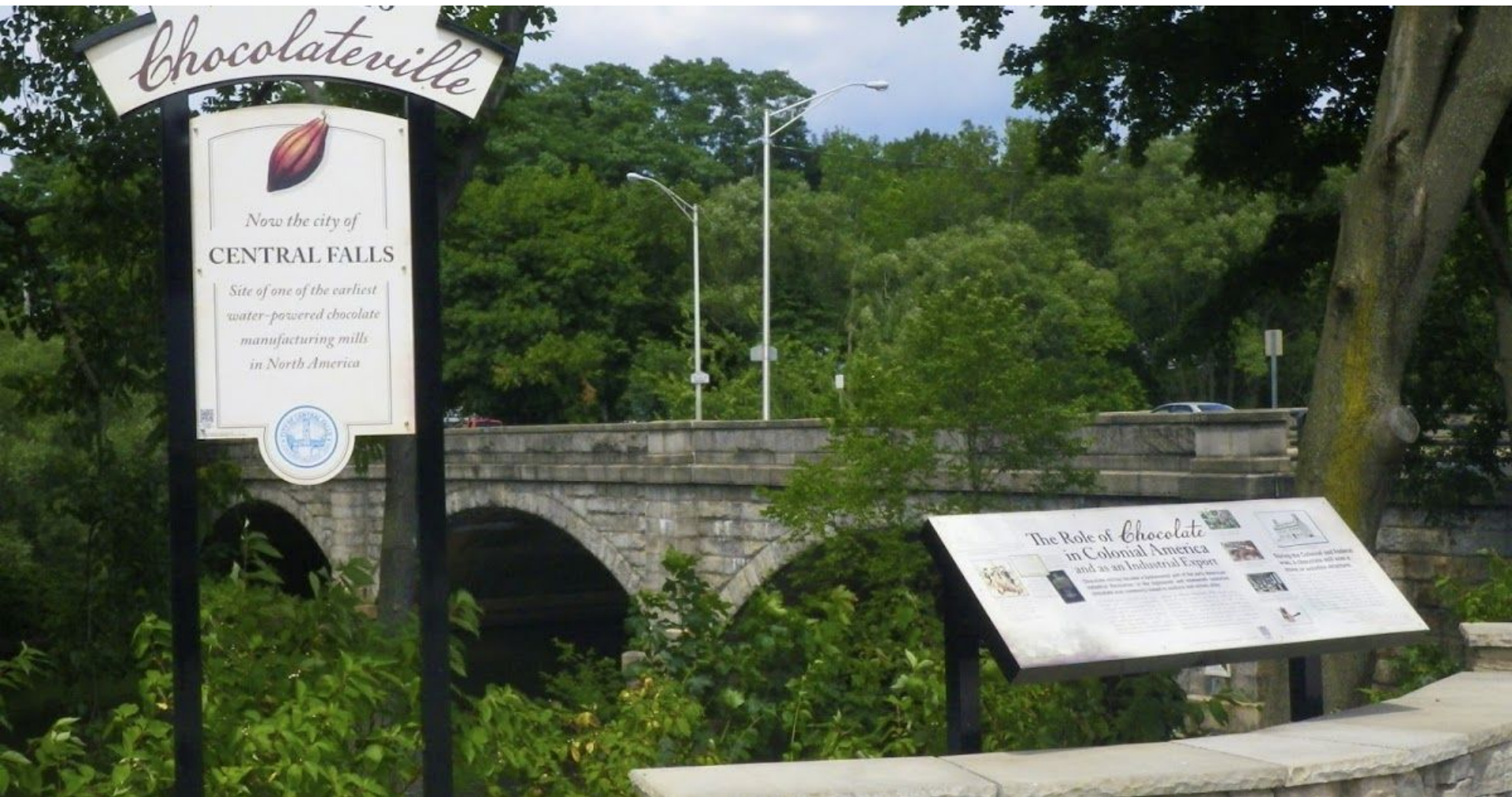


Catalyst Project #1: Falls Landing



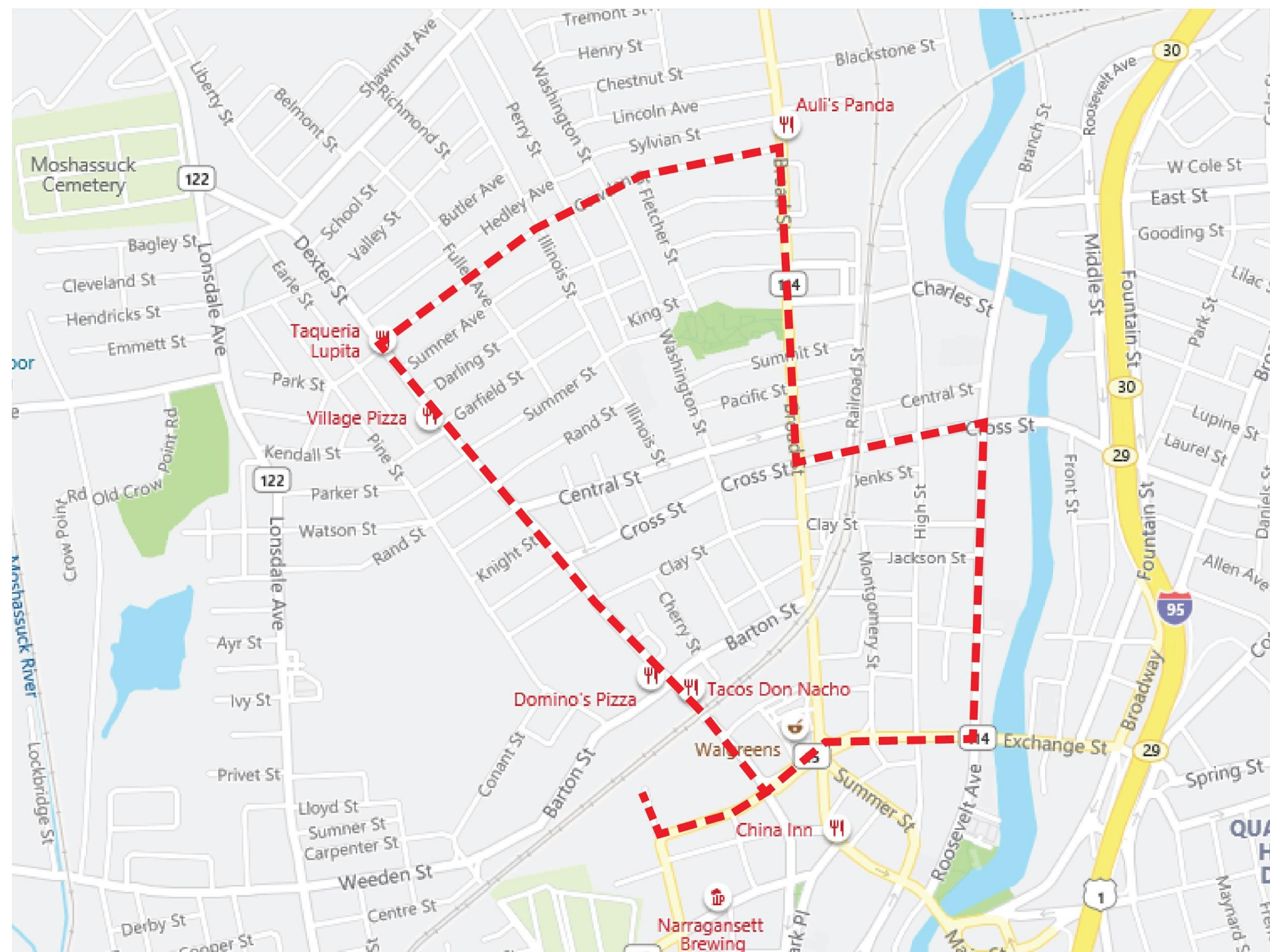


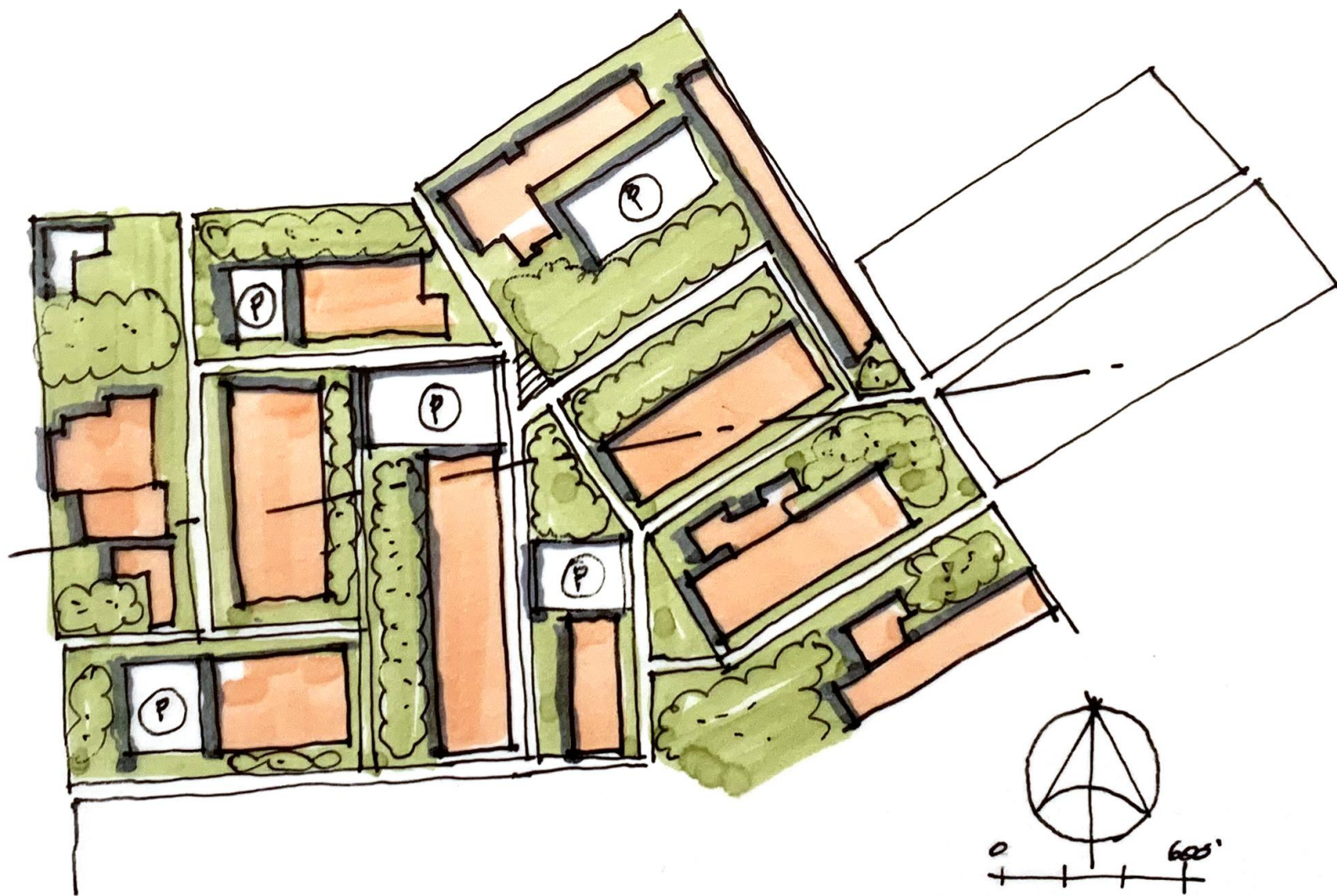
Catalyst Project #2: Chocolate Landing



Catalyst Project #3: Transit Oriented Community





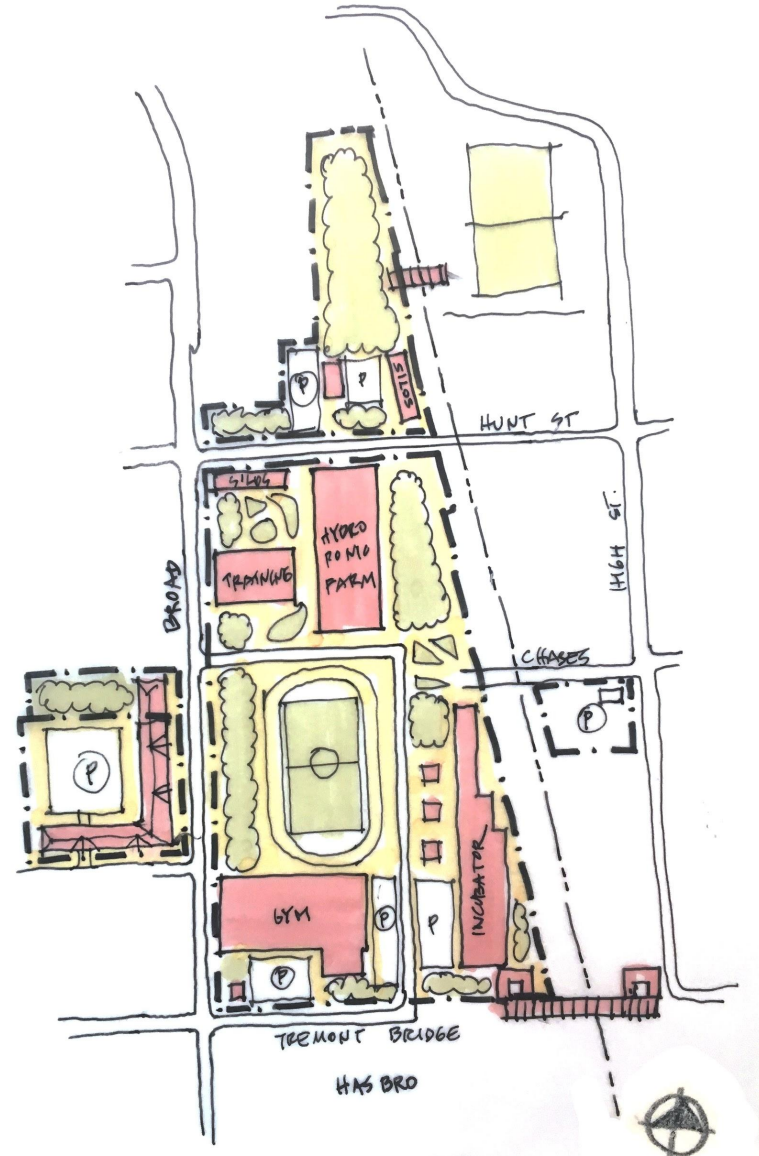


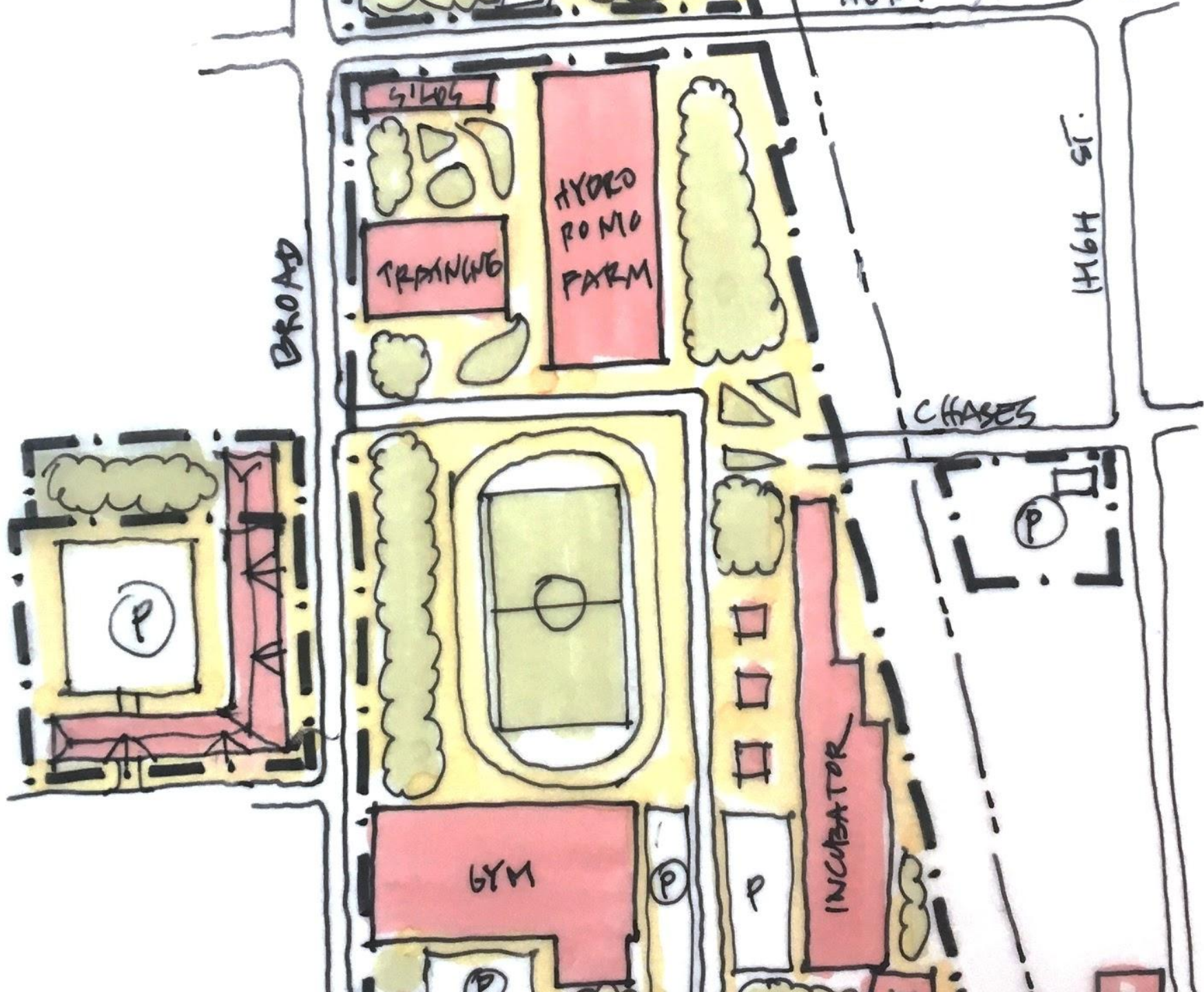




Catalyst Project #4: Campus in the City (OSRAM)

- Food
- Arts
- Recreation
- Housing
- Learning







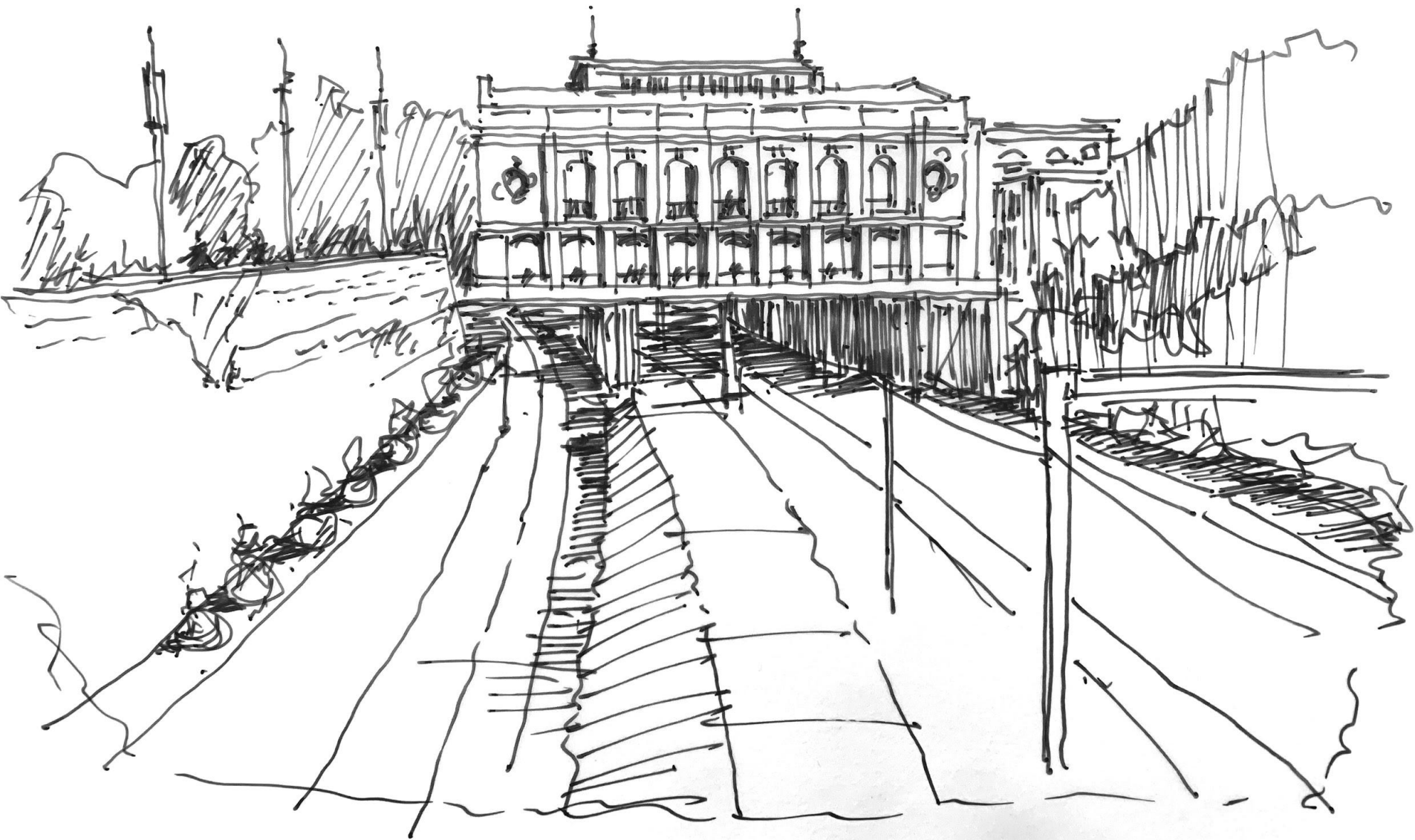
Catalyst Project #5:
Expanding the Canopy



Main Street Node



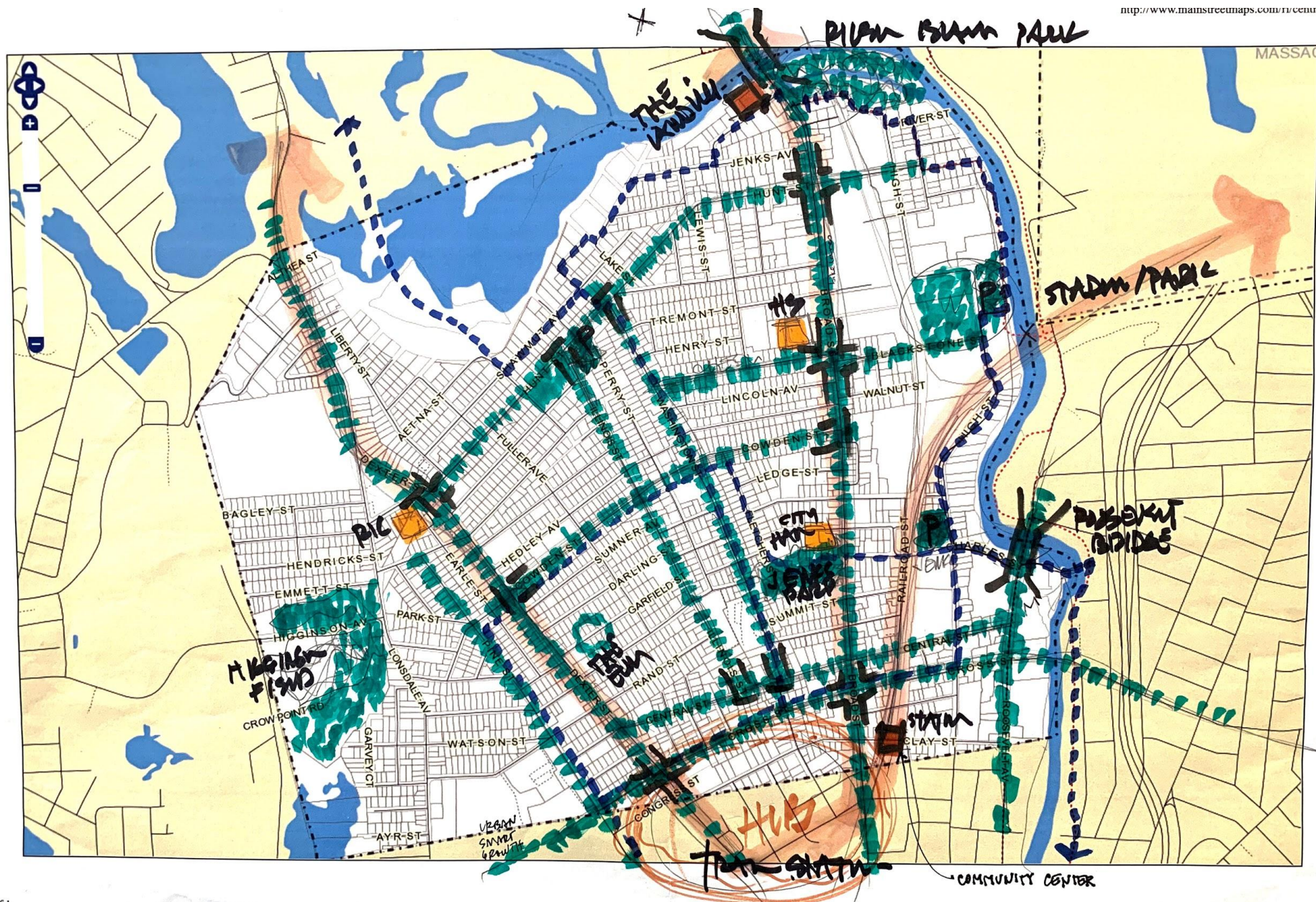




Natural Networks

- Greenways
- Pedestrian Network
- Bike Network

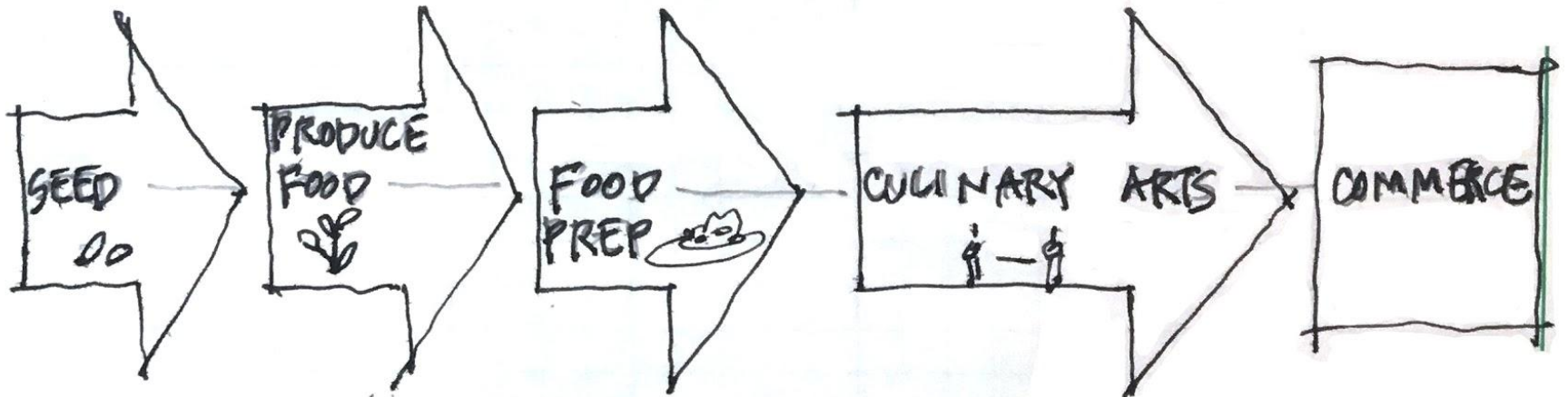




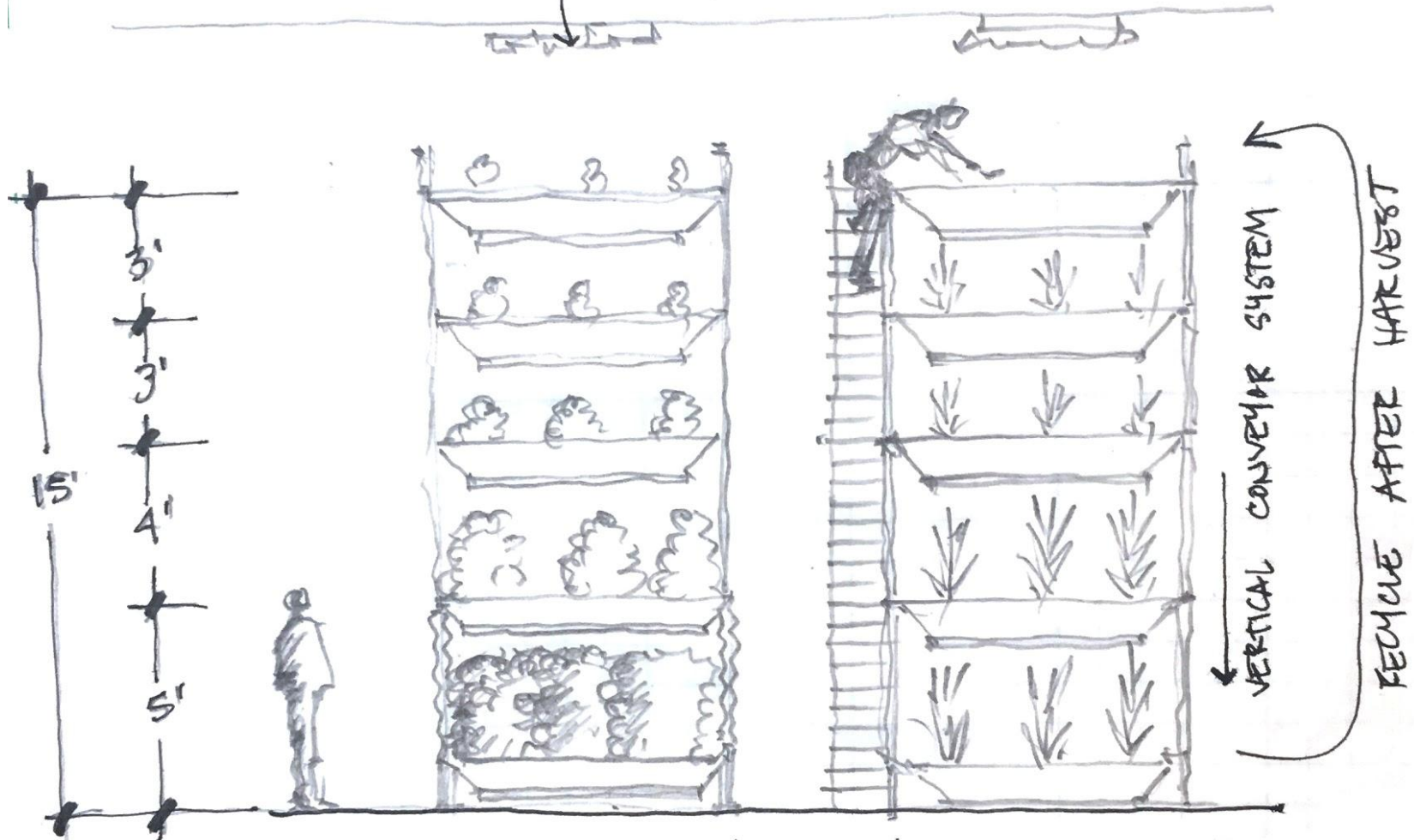


"PARTS & REC"

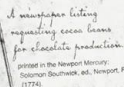
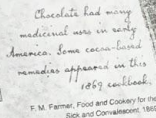
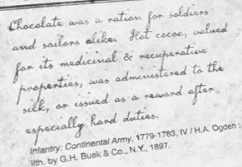
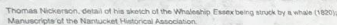
The Food Economy



LED LIGHTING (TYP).



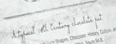
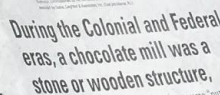
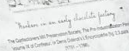
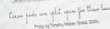
HYDROPONIC FARM



Chocolate milling became a fundamental part of the early American Industrial Revolution. In the eighteenth and nineteenth centuries, chocolate was commonly issued to soldiers and sailors alike.

Conventional wisdom held that a hot cocoa beverage had medicinal or recuperative qualities for wounded or exhausted troops. At sea, ship captains sometimes served out cocoa to their sailors as a special indulgence after a storm or especially hard duty. As a substitute for alcoholic "grog," strong chocolate served as a medicinal beverage for injured or sick mariners aboard ship, too.

Because the **Wheat Chocolate Mill** operated during a period of intense warfare in the Atlantic world, the French Revolution, the Napoleonic Wars, and the War of 1812, 1789-1815), it is probable that some of Wheat's finished cocoa was packaged and exported for use as military provisions. Further, though most of the chocolate produced in Central Falls was consumed locally, some was also likely sold to outfitters in nearby seaports, destined to be loaded as provisions aboard whaling ships, merchant or fishing vessels, and warships.



water or animal driven, used to process cacao "nuts" or into cacao. New England merchants typically imported from the Caribbean, where it had been grown, fermented and dried. The operation of the mill consisted of roasting, winnowing and grinding the raw cacao beans into a chocolate paste. The chocolate paste, which included sugar and often spices like nutmeg or cinnamon, was then stamped into blocks or "cakes" (like soap) and sold commercially in shops or to individuals for the purpose of baking or beverage making. Consumers would use a knife or grater to shave from the cake the amount of chocolate they needed for cacao, reductions of baked goods.

Many of the cases have been noted as tropical American diseases which arise from the same zoonotic organisms as the anthrax and cattle disease.

(See also Bulletin of Tropical Disease Department No. 70)

For more information on Chevrolet call us at: Chevrolet.com or call: 800-724-2222

Oil on canvas, 1836. The painting depicts the Battle of Trafalgar, a decisive naval battle between the British Royal Navy and the French Navy. The scene is set on the deck of a British ship, with sailors and officers engaged in various activities. The painting is a reproduction of the original by J.M.W. Turner.



FORM BASED CODE FOR CENTRAL FALLS.

DISTRICTS

- RESIDENTIAL
- INDUSTRIAL
- CAMPUIS
 - HEALTHCARE
 - INDUSTRIAL
 - INSTITUTIONAL
- OPEN SPACE
- OVERLAYS
 - USE
 - CONSERVATION
 - P U D
 - INCENTIVE



1- ZONE DISTRICT

2- DOMINANT BLDG FORM/CITRACTER

3- LOT SIZE / BLDG HEIGHT

4. SPECIAL PURPOSE.

5- NEW CONFORMING USES-

- RESIDENTIAL CONTEXT DESCRIPTION
 - GENERAL CHARACTER
 - STREET TYPES AND ACCESS
 - BLOCK PATTERNS
 - BUILDING PLACEMENT/LOCATION
 - HEIGHT/FORM
- DOMINANT FORMS
 - ESTABLISHED DISTRICTS
 - MULTI-FAMILY RESIDENTIAL
 - MAIN STREET
- DESIGN STANDARDS
 - INTENT
 - FORM STANDARDS
 - DETACHED BUILDINGS
 - SUPPLEMENTAL DESIGN STANDARDS
- USES & PARKING
 - APPLICATION
 - ORGANIZATION
 - DESIGN STANDARDS

CHART

SF HOUSE
TRIPLE DECK
DRIVE THROUGH
DUPLEX - TOWN HOME
~~MIXED COMM/RES.~~
SHOP FRONT

Ex. TRIPLE DECK

HEIGHT

- STORIES
- FEET

SETTING

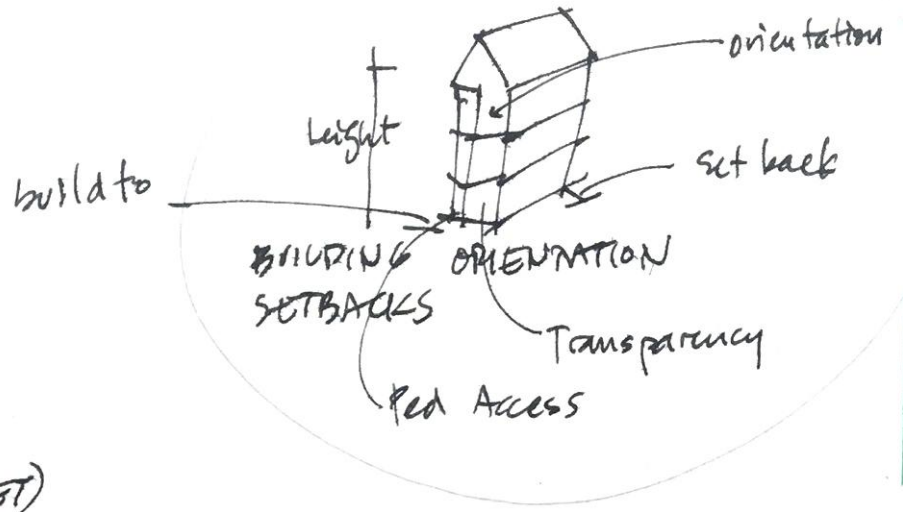
- BUILD-TO (PRIMARY STREET)
(SECONDARY STREET)
- SETBACKS - PRIMARY
SIDE STREET
SIDE INTERIOR
- PARKING - See parking standards
- VEHICLE ACCESS.

DESIGN ELEMENTS

- BUILDING CONFIGURATION
- ORIENTATION
- UNIT CONFIGURATION
- STREET LEVEL ACTIVATION (TRANSPARENCY)
- PEDESTRIAN ACCESS

USES

- NUMBER OF UNITS



- INDUSTRIAL

- GENERAL CHARACTER
- STREET TYPES AND ACCESS
- BLOCK PATTERNS
- BUILDING PLACEMENT/LOCATION
- HEIGHT/FORM.

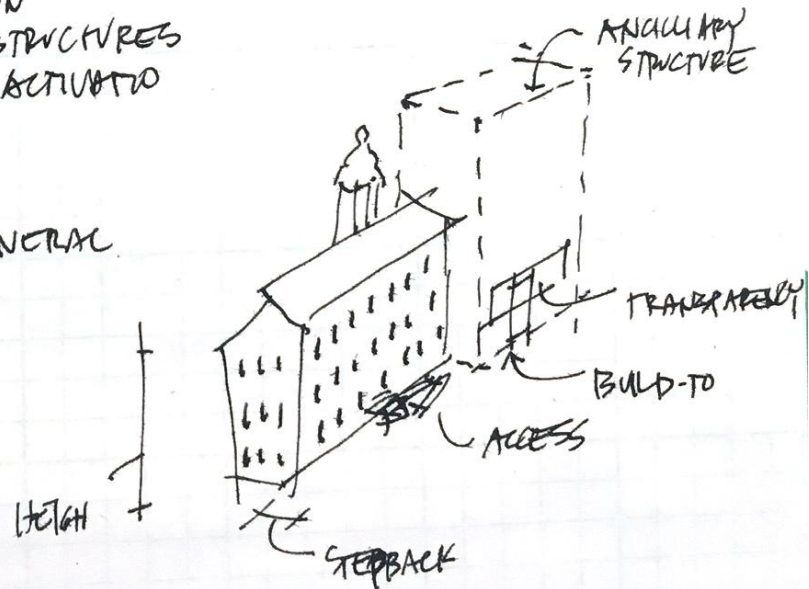
- DOMINANT FORMS

- ESTABLISHED DISTRICTS - NON CONFORMING
- MILL
- MANUFACTURE
- URBAN AGRICULTURE
- SHOP FRONT?

- DESIGN STANDARDS

- BLDG CONFIGURATION
 - ORIENTATION
- BLDG FOOTPRINT STRUCTURES
- STREET LEVEL ACTIVATION

- USES - RESIDENTIAL
INDUSTRIAL GENERAL
MILL - HISTORIC
PARKING



IMMEDIATE ACTION ITEMS

(Years 1-3)

- Real estate leases
- Asset map
 - Identifying partnership opportunities
 - Ways to leverage existing resources
 - Eliminating redundancy
- Active engagement of a grant writer for the city of Central Falls (full-time)
 - Analyzing potential funding opportunities
 - Robert Woods Johnson, Knight, Kresge Foundations, ArtPlace
 - Specifically: Placemaking, Economic Development, Housing Rehabilitation
 - Engagement with Federal, State, Philanthropic sources
- Establishment of a community liaison (multi-lingual)

MEDIUM-RANGE ACTION ITEMS

(Years 4 -7)

- Develop workforce partnerships focused on health and culinary careers
- Active branding efforts
- Prioritize street to node investments
- Implement design guidelines along commercial corridors
- Zoning consistency analysis (update)
- Implementation of resident protection/preservation
 - Rent Stabilization Program
- Implementation of federal preservation programs
- Consistent relationship of plans

LONG-RANGE ACTION ITEMS

(Years 8 - 15)

- Tree corridor
- Catalyst projects underway (or complete)
- Develop physical neighborhood linkages
- Expand workforce pathways programs
- Complete sidewalk infrastructure
- Improved mobility network
- Establish Central Falls as a regional destination

FINANCING

- Climate Resiliency
 - EPA
 - FEMA
 - Trust for Public Land
- Housing (Renovation, Preservation and Creation)
 - Rent Stabilization (tax abatements)
 - Section 108
 - Revolving Loan Fund
- Commercial Opportunities
 - Opportunity Zone
 - Ground Lease

ADDITIONAL RESOURCES

Funding:

- Robert Wood Johnson Foundation
- Knight Foundation (site-based grants)
- ArtPlace America (placemaking grants)
- Kresge Foundation
- National Endowment for the Arts
- Main St. Coalition

Partnerships

- Department of Public Health
- Department of Justice
- JP Morgan Chase

Vision Statement

*A safe, well-lit and navigable city, with attractive destinations and informed residents, will lead to increased economic and social opportunities for our community, and cultivate the richness of the Central Falls we all know and **LOVE** - the City of Dreams.*