

Microsoft SQL Server 2012

INSTALLATION MANUAL

Table of Contents

1. Microsoft SQL Server 2012.....	3
1.1 Microsoft SQL Server 2012 Installation.....	3
1.1.1 Installation Requirement of Microsoft SQL Server 2012	3
1.1.2 Microsoft SQL Server 2012 Installation	6
1.2 .NET Framework 3.5 Installation	17
1.2.1 NET Framework 3.5 Installation on Windows Server 2008.....	17
1.2.2 NET Framework 3.5 Installation on Windows Server 2012.....	20

1. Microsoft SQL Server 2012

This chapter explains software requirements and installation process for installing Microsoft SQL Server 2012.

1.1 Microsoft SQL Server 2012 Installation

1.1.1 Installation Requirement of Microsoft SQL Server 2012

This chapter explains hardware and software requirement for installing Microsoft SQL Server 2012.

- Hardware and Software Requirement

Following requirements are necessary for installing MS-SQL Server 2012

- 1) .NET Framework

- .NET 3.5 SP1 : Even though .NET 3.5 SP1 is a requirement for installing MS-SQL Server 2012, it is not automatically installed by installing MS-SQL Server 2012. User can download it from download center link or from Windows update. If OS is upper version than Windows Server 2008, user needs to install it from management tool (See : 1.2 .NET Framework 3.5 installation)
- .NET 4.0 : Install .NET 4.0 during function installation step.

- 2) Windows PowerShell 2.0

- SQL Server 2012 doesn't set to install Windows PowerShell 2.0. Hence, user should install or set to use Windows PowerShell 2.0.

- 3) Internet Software

- Upper version than Internet Explorer 7

- 4) Hard disk

- MS-SQL server 2012 requires at least 6GB of free disk space. Required free disk space varies depending on the component of SQL 2012 to install.

- 5) Monitor

- Monitor should have higher resolution than Super-VGA (800x600).

- Requirement for processor, memory and operating system

- 1) Memory

- Minimum : Express Edition (512MB), All other versions (1GB)
- Recommend : Express Edition (1GB), All other versions (At least 4GB is required and memory size needs to be expand as database size gets bigger.)

2) Processor

- Minimum : x86 Processor (1.0GHz), x64 Processor(1.4GHz)
- Recommend : higher than 2.0GHz

3) Processor type

- x64 Processor : AMD Opteron, AMD Athlon 64, Intel Xeon that supports Intel EM64T, Intel Pentium IV that supports Intel EM64T
- x86 Processor : Higher than Pentium III compatible processor.

● Installation environment of Microsoft SQL Server 2012 by version

SQL Server version	32bit	64bit
Enterprise	Windows Server 2008 SP2 32bit/64bit Windows Server 2008 R2 SP1 64bit Windows Server 2012 64bit Windows Server 2012 R2 64bit	Windows Server 2008 SP2 64bit Windows Server 2008 R2 SP1 64bit Windows Server 2012 64bit Windows Server 2012 R2 64bit
Business Intelligence	Windows Server 2012 R2 64bit Windows Server 2012 64bit Windows Server 2008 SP2 32bit/64bit Windows Server 2008 R2 SP1 64bit	Windows Server 2012 R2 64bit Windows Server 2012 64bit Windows Server 2008 SP2 64bit Windows Server 2008 R2 SP1 64bit
Standard	Windows Server 2012 R2 64bit Windows Server 2012 64bit Windows Server 2008 R2 SP1 64bit Windows 8.1 / 8 / 7 SP1 32bit/64bit Windows Server 2008 SP2 32bit/64bit Windows Vista SP2 32bit/64bit	Windows Server 2012 R2 64bit Windows Server 2012 64bit Windows Server 2008 R2 SP1 64bit Windows 8.1 / 8 / 7 SP1 64bit Windows Vista SP2 64bit
Web	Windows Server 2012 R2 64bit Windows Server 2012 64bit Windows Server 2008 R2 SP1 64bit Windows Server 2008 SP2 32bit/64bit	Windows Server 2012 R2 64bit Windows Server 2012 64bit Windows Server 2008 R2 SP1 64bit Windows Server 2008 SP2 64bit
Developer	Windows Server 2012 R2 64bit	Windows Server 2012 R2 64bit

	Windows Server 2012 64bit Windows Server 2008 R2 SP1 32/64bit Windows 8.1 / 8 / 7 SP1 32/64bit Windows Server 2008 SP2 32/64bit Windows Vista SP2 32/64bit	Windows Server 2012 64bit Windows Server 2008 R2 SP1 64bit Windows 8.1 / 8 / 7 SP1 64bit Windows Server 2008 SP2 64bit Windows Vista SP2 64bit
Express	Windows Server 2012 R2 64bit Windows Server 2012 64bit Windows Server 2008 R2 SP1 64bit Windows 8.1 / 8 / 7 SP1 32/64bit Windows Server 2008 SP2 32/64bit Windows Vista SP2 32/64bit	Windows Server 2012 R2 64bit Windows Server 2012 64bit Windows Server 2008 R2 SP1 64bit Windows 8.1 / 8 / 7 SP1 64bit Windows Server 2008 SP2 64bit Windows Vista SP2 64bit

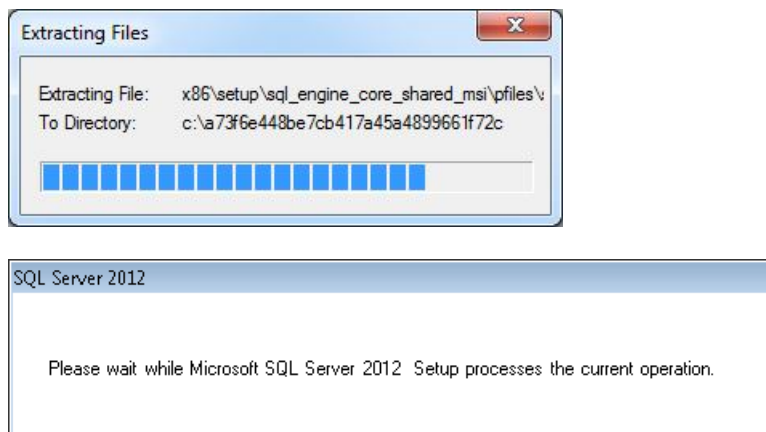
1.1.2 Microsoft SQL Server 2012 Installation

This chapter explains installation process of Microsoft SQL Server 2012.

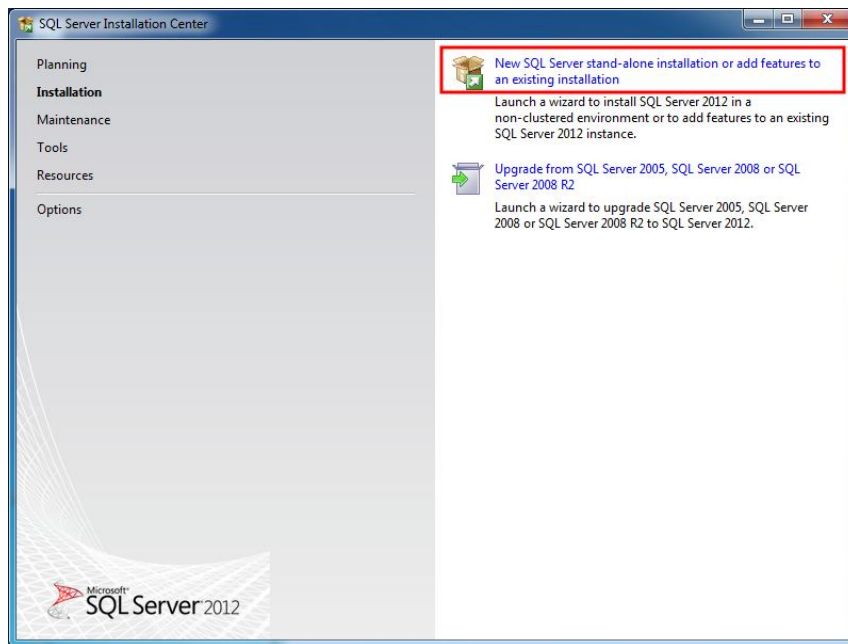
Please note that installation process can be changed if the user stops or cancels the installation in the middle of installing and re-install.

- Program installation

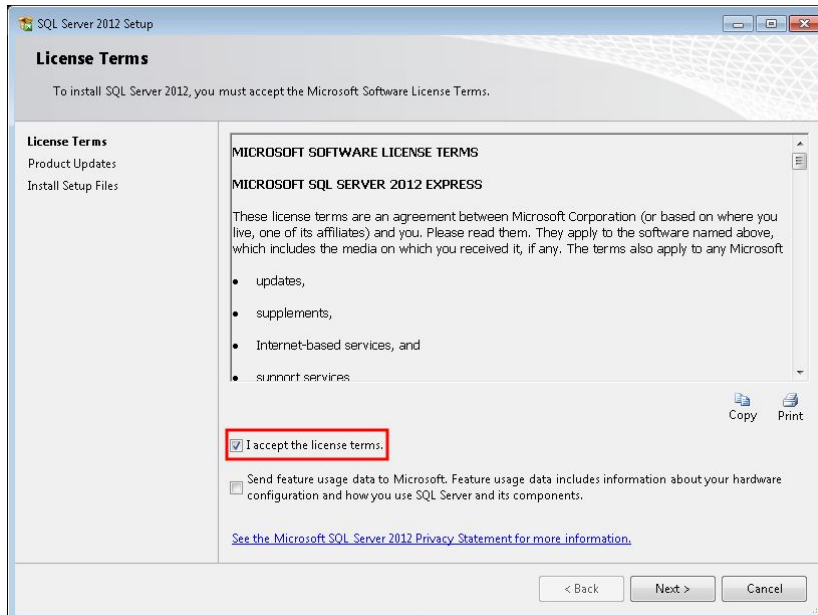
Open installation file with 'run as administrator'.



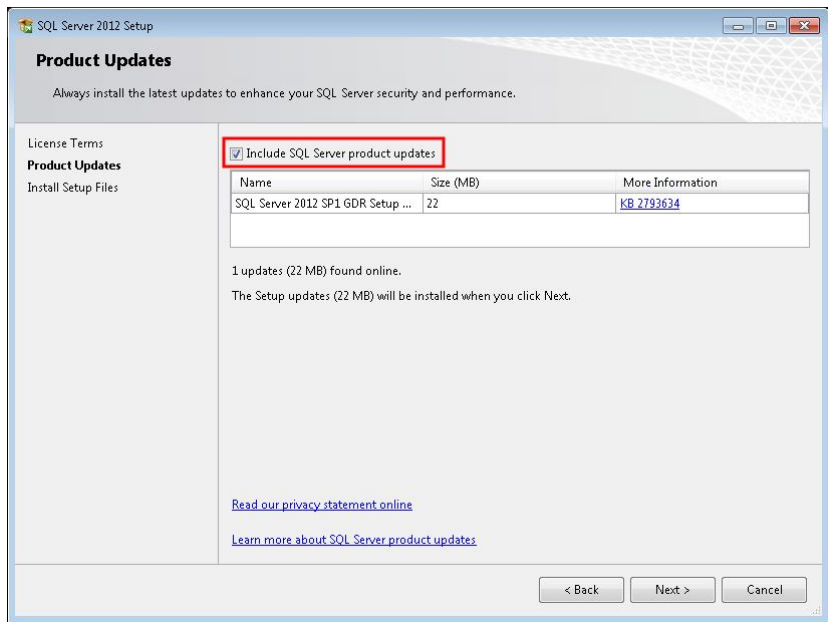
- 1) SQL Server installation center screen is displayed. Go to [installation] tab and select 'New SQL Server stand-alone installation or add features to an existing installation' from right side. This is for adding SQL server or adding specific feature to existing system.



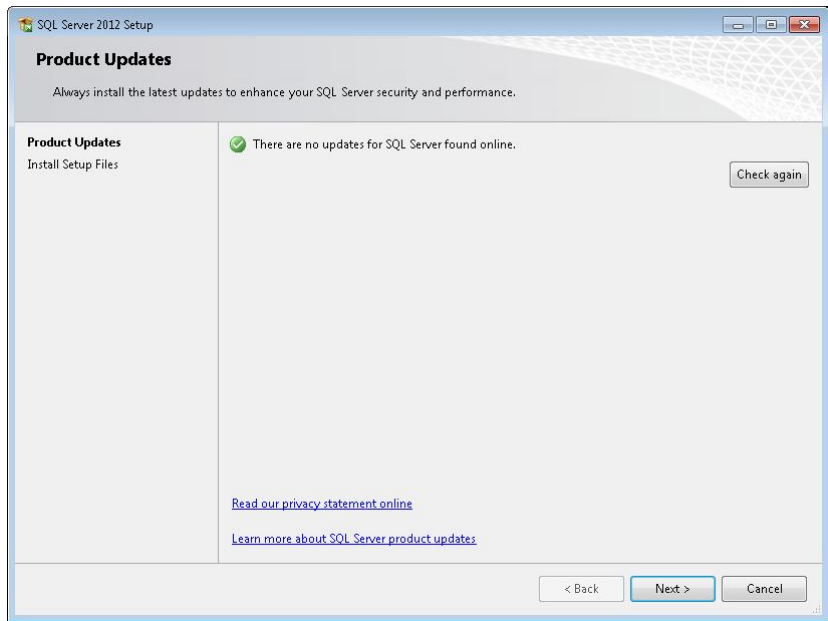
- 2) Check 'I accept the license terms' from MICROSOFT SOFTWARE LICENSE TERM and click 'next'.



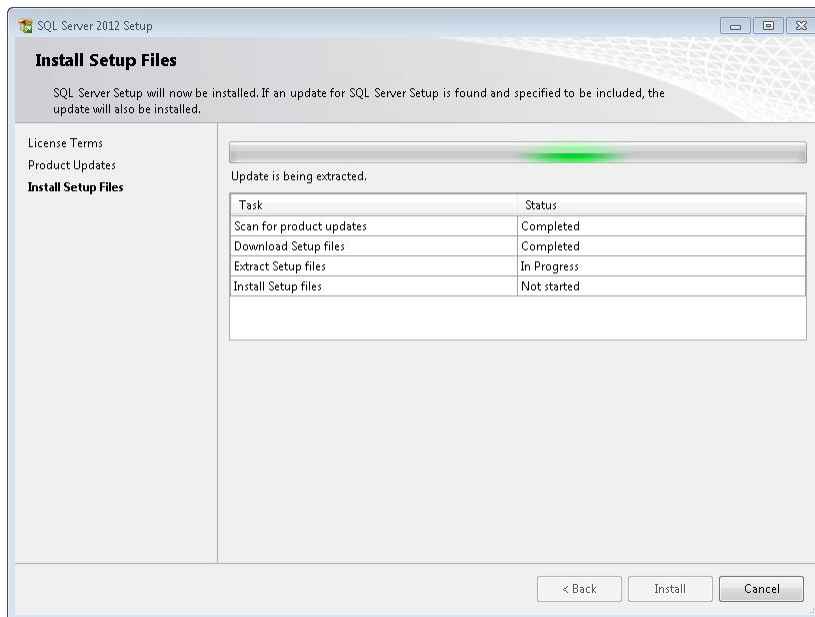
- 3) Product updates screen shows the user latest updates needed to install SQL server 2012. If there is any update available, check 'Include SQL server product update'.



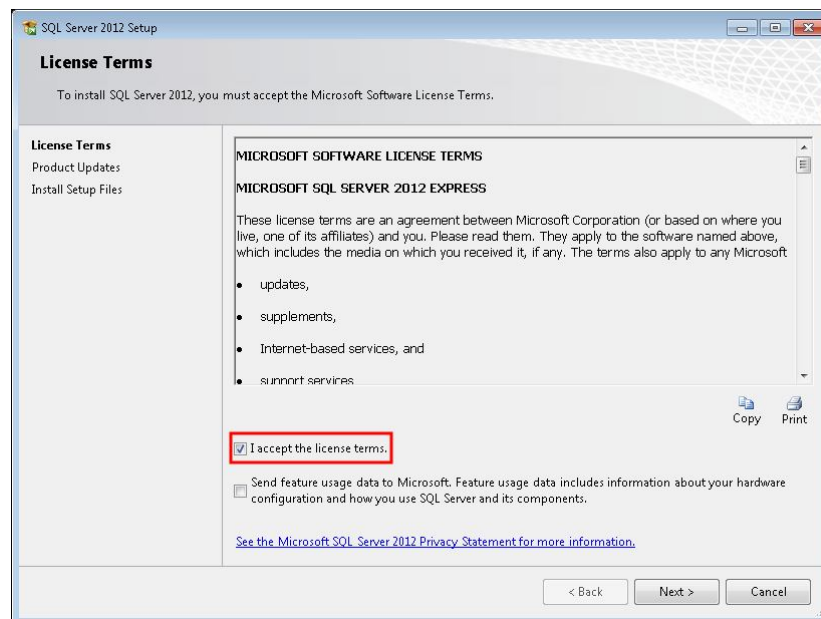
Click 'Next' to proceed if SQL Server 2012 is the latest version.



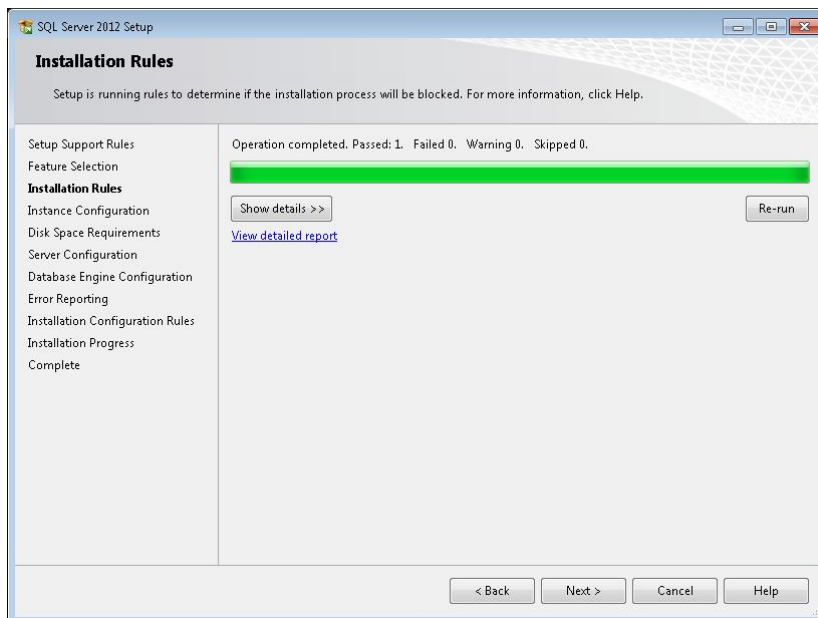
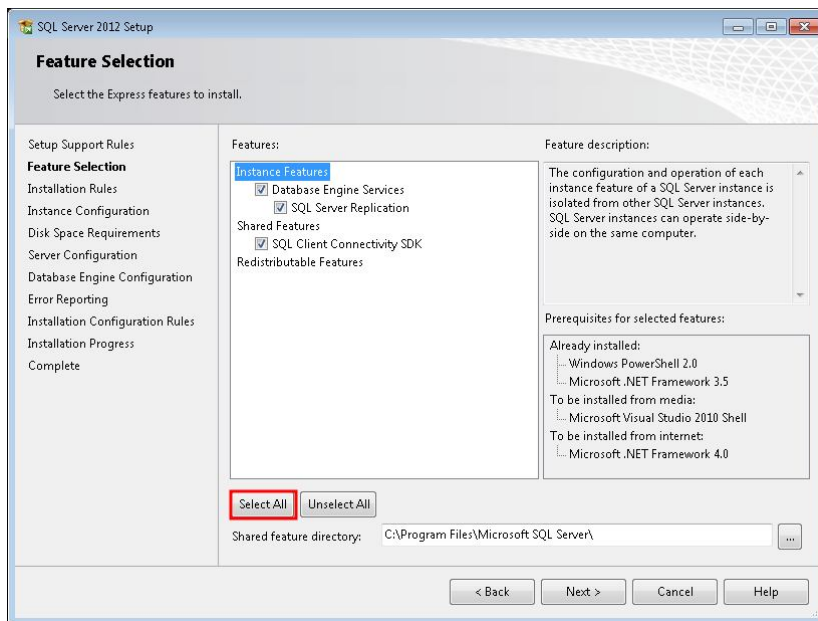
4) Installation starts. Please wait until it is done.



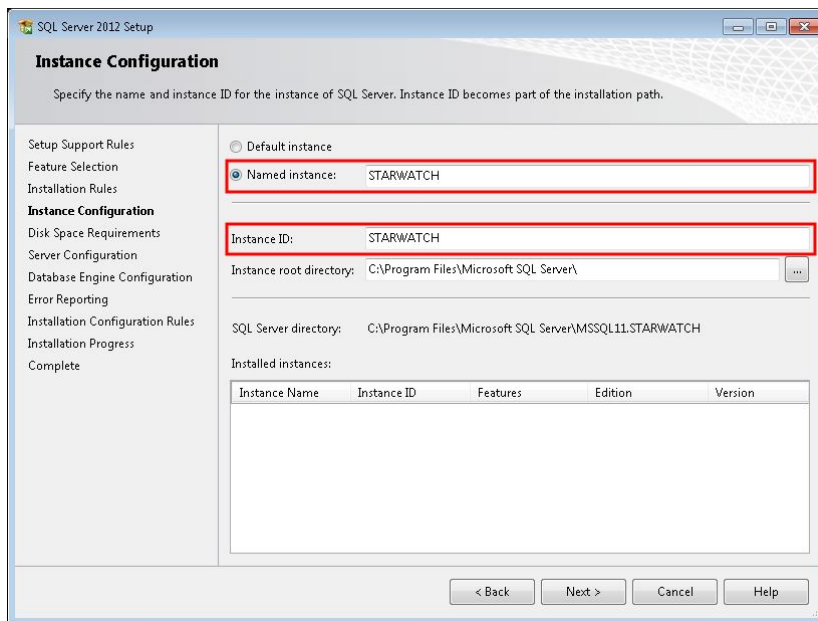
- 5) Check 'I accept the license terms' from MICROSOFT SOFTWARE LICENSE TERM and click 'next'.



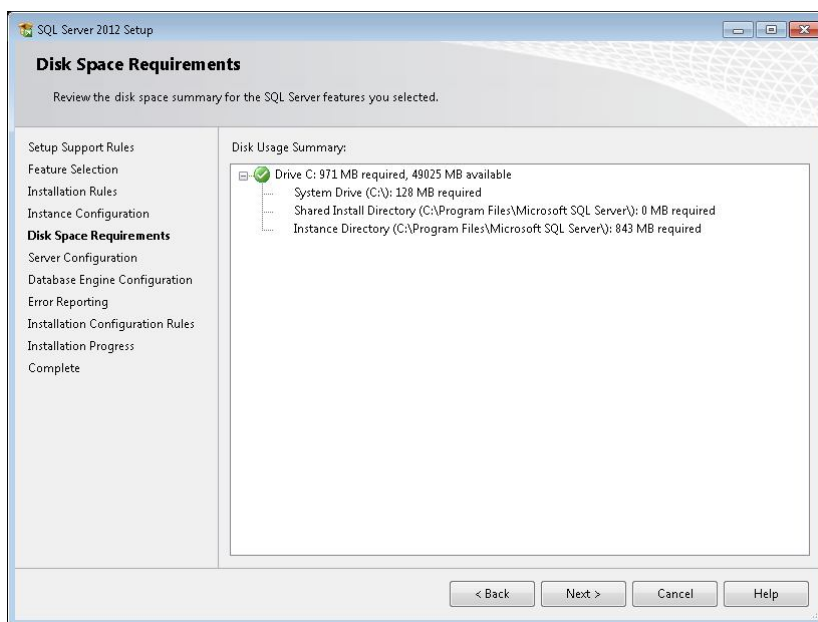
- 6) Feature selection screen shows features that are needed to user. Click 'Select All' and click 'Next'



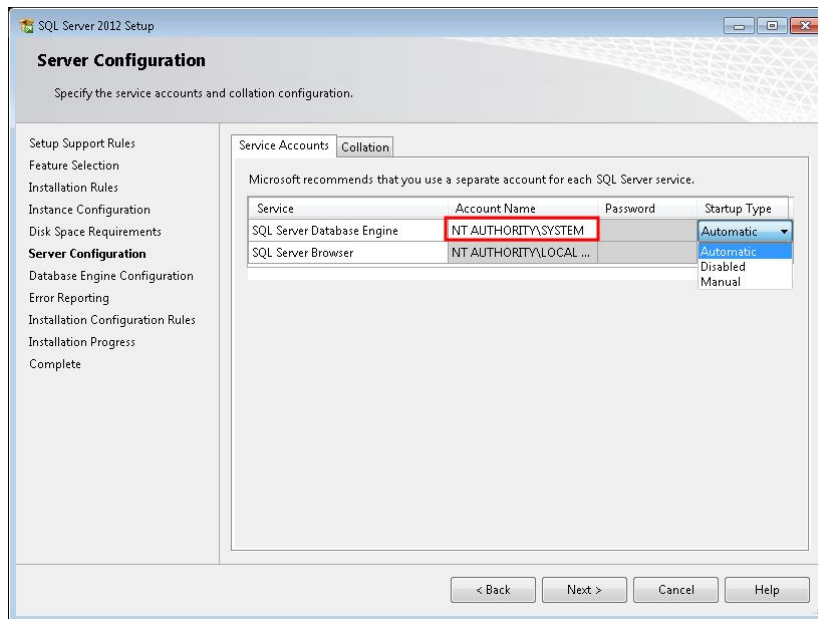
- 7) Default instance name is 'MSSQLSERVER'. Check [Named instance] and change 'named instance' and 'instance ID' into 'STARWATCH'. Make sure instance name is not duplicated when installing additional instance. If there is already installed instance, instance name is shown from Installed instance. Once configuration is done, click 'Next'.



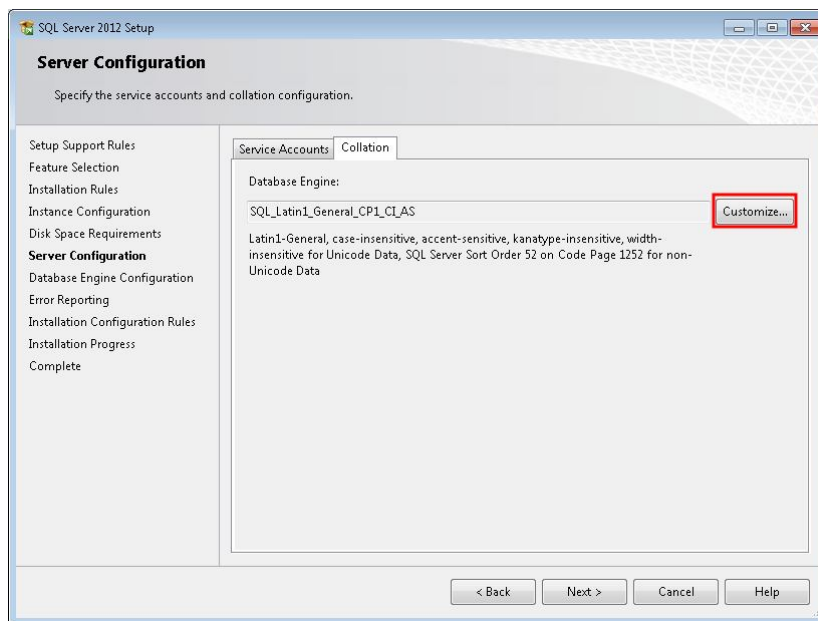
- 8) Check free disk space where SQL server is installed. If the space is not enough, change root directory from previous step 'instance configuration'.

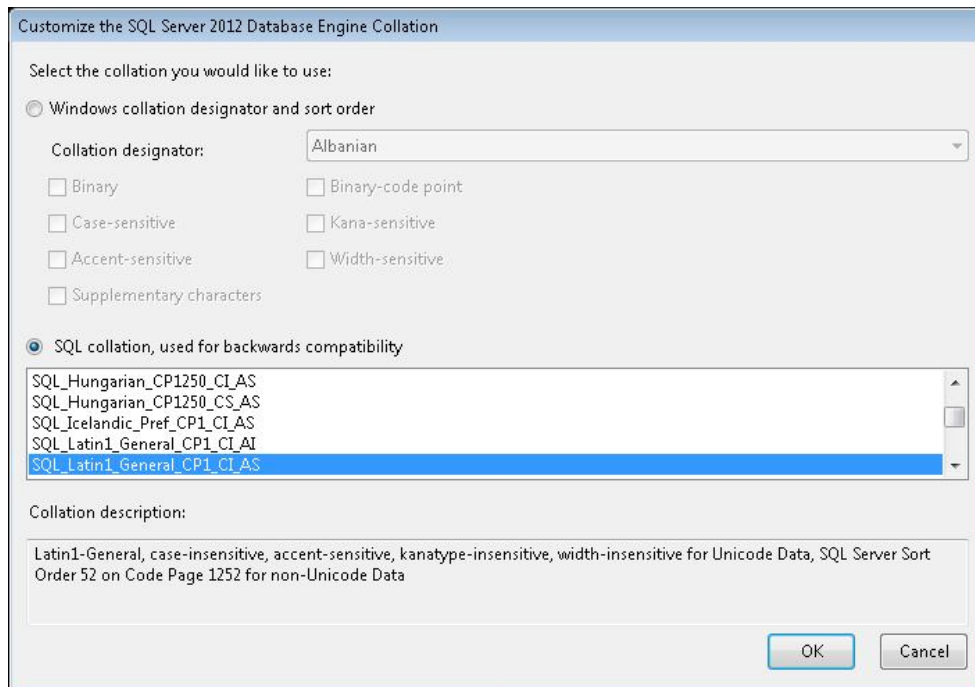


- 9) Set startup type and account name from 'Server Configuration'. Also collocation is specified. First change account name of SQL Server Database Engine into 'NT AUTHORITY\SYSTEM'. And select startup type. (When 'Automatic' is selected, applicable service is automatically initiated.)



Move to 'collation' tab. Collation is basically installed according to language of OS. Click [Customize] and move to 'Customize the SQL Server 2012 database engine collation'





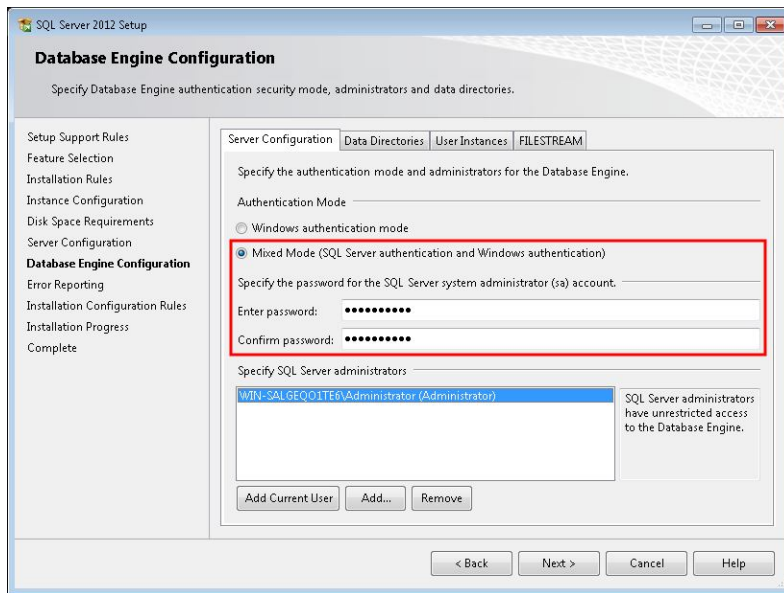
If [Collation designator(D)] is selected, various collation designators are displayed. According to checked option, user can set binary, accent-sensitive etc. Also the user can prioritize collation depending on set option.

Basically it is set as language of OS. So click 'Next'.

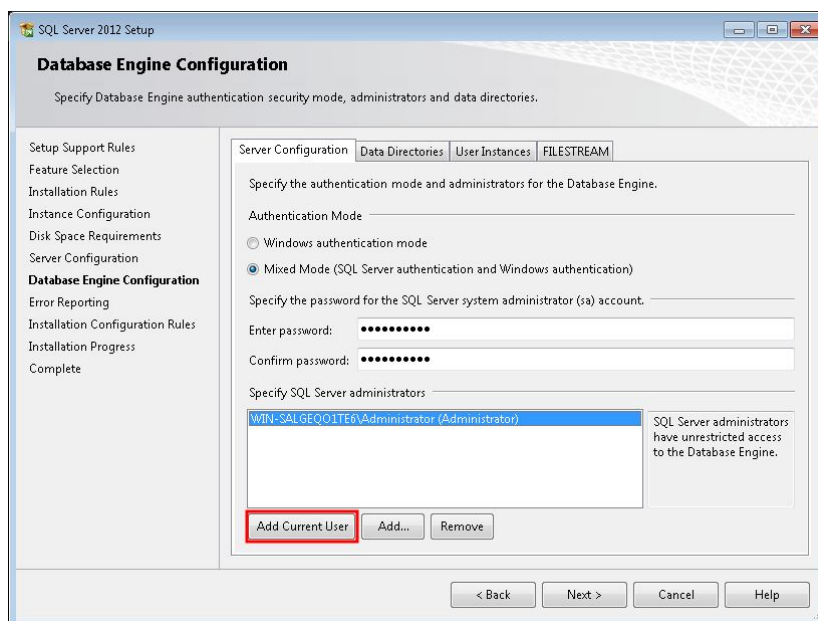
- 10) Move on to 'Database Engine configuration' and click 'server configuration' tab. Proceed authentication mode. Authentication mode consists of Window authentication mode and mixed mode. Windows authentication mode only allows user who is able to access to SQL server among window users. In case of mixed mode, SQL Server can be used by other user who is not a window user.

If mixed mode is selected, user needs to abide by constraint condition including using special character and number. This password must be memorized or noted.

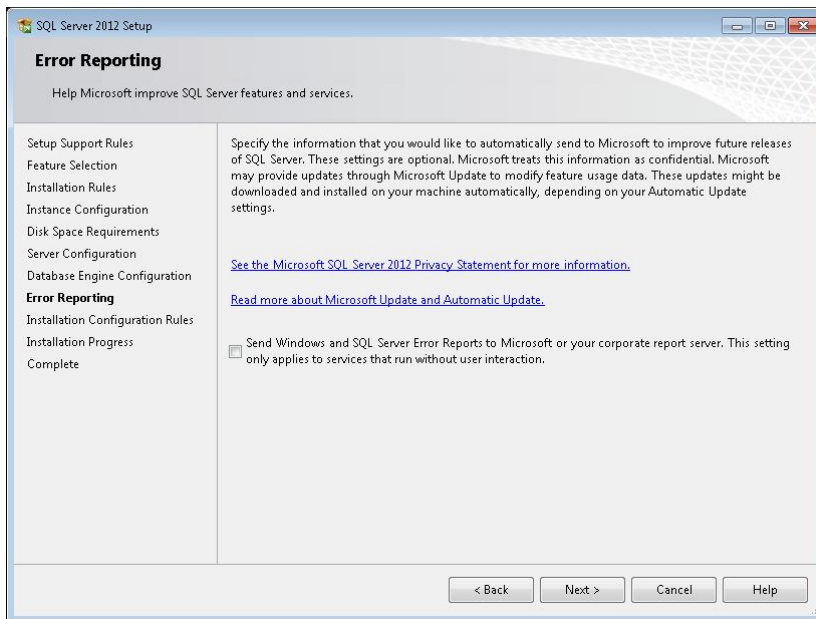
It is used for accessing to Database of STARWATCH ENTERPRIS.



Add users to access with 'Windows authentication' from 'Specify SQL Server administrator'. Click 'Add Current User'. When the user wants to add another user, click 'Add' to select another user. Then click 'Next' button.



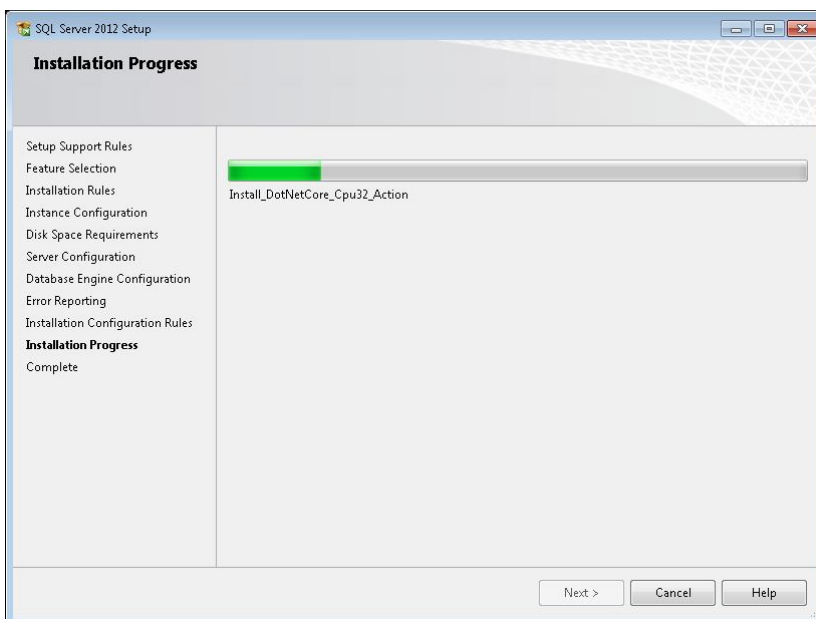
- 11) If the user wants to report error occurred during installation to Microsoft, check the box from 'Error Reporting'. Click 'Next' to continue.



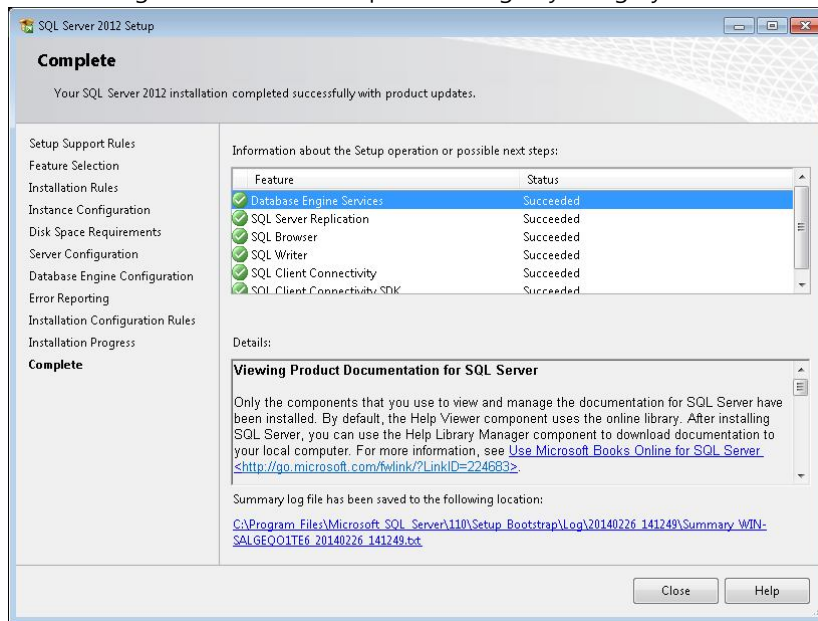
12) Examination related to installation is done from 'Installation Configuration Rules'.

(When error related to installation occurs, ask expert on SQL Server or Microsoft so the user may continue the installation process.)

13) 'Microsoft SQL Server 2012' is being installed.

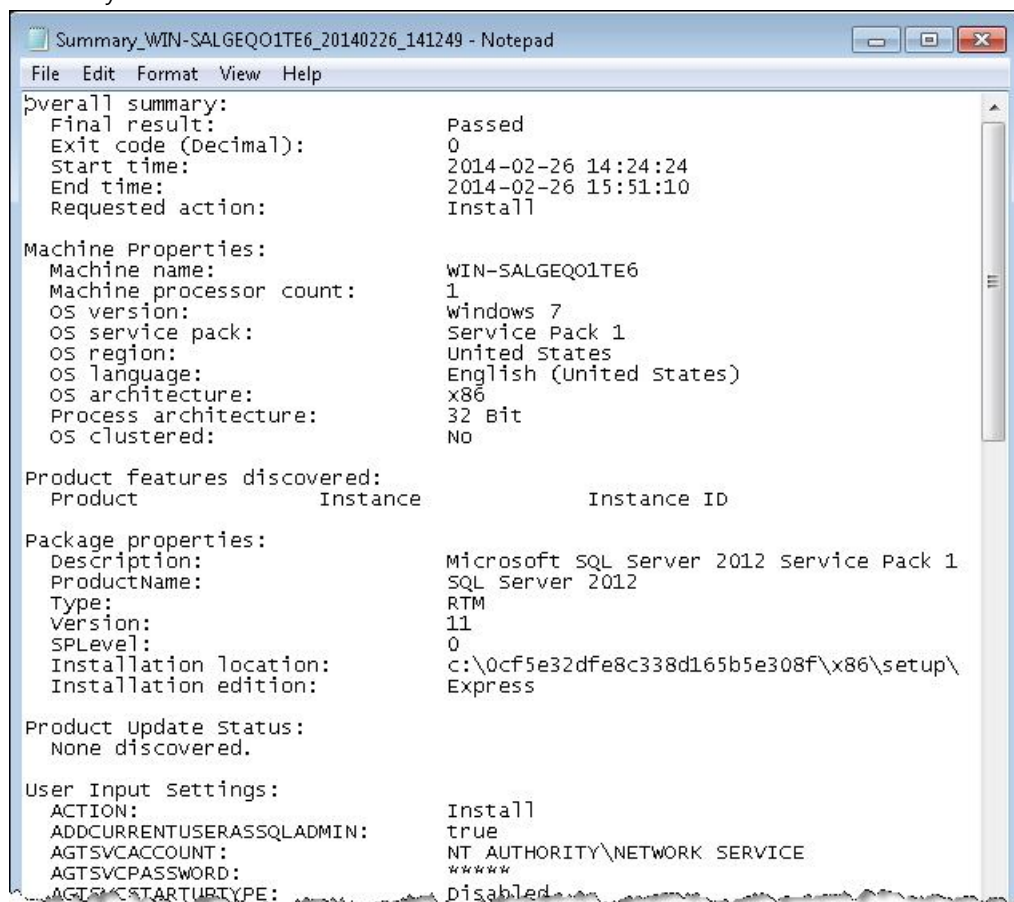


Installation gets started and complete message by category is shown.



14) Click 'Close' to finish installation.

Link leads to text file that shows log information on system installation. It includes various information on current system and installation version etc.



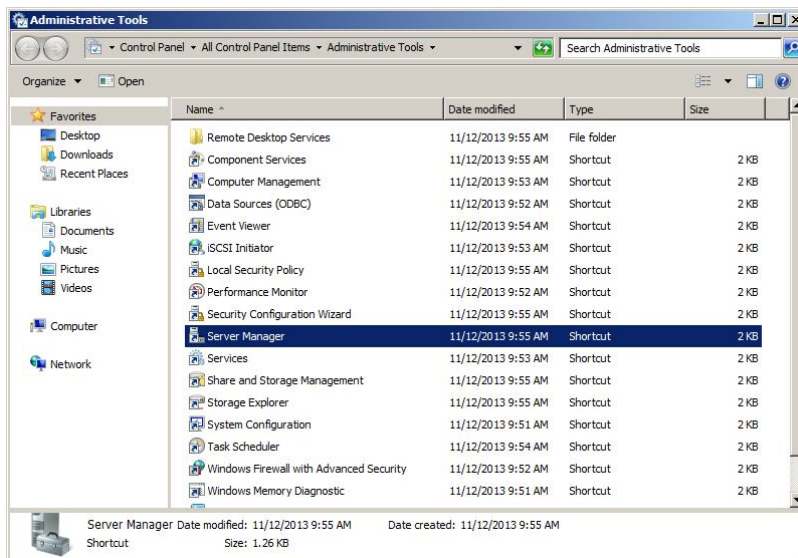
1.2 .NET Framework 3.5 Installation

1.2.1.NET Framework 3.5 Installation on Windows Server 2008.

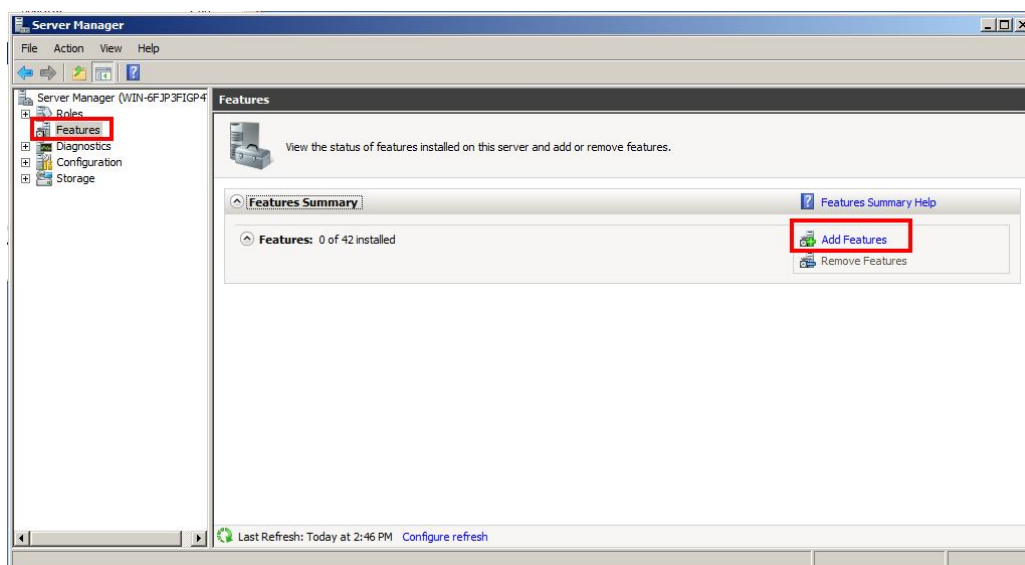
This chapter explains how to install .NET Framework 3.5 from Windows Server 2008.

- Procedure

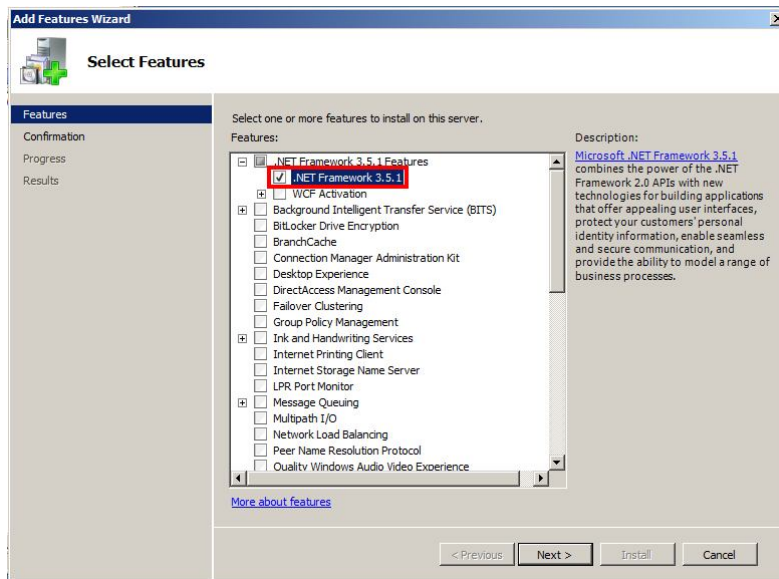
- 1) Go to [Control Panel] → [Administrative Tools] → [Server Manager].



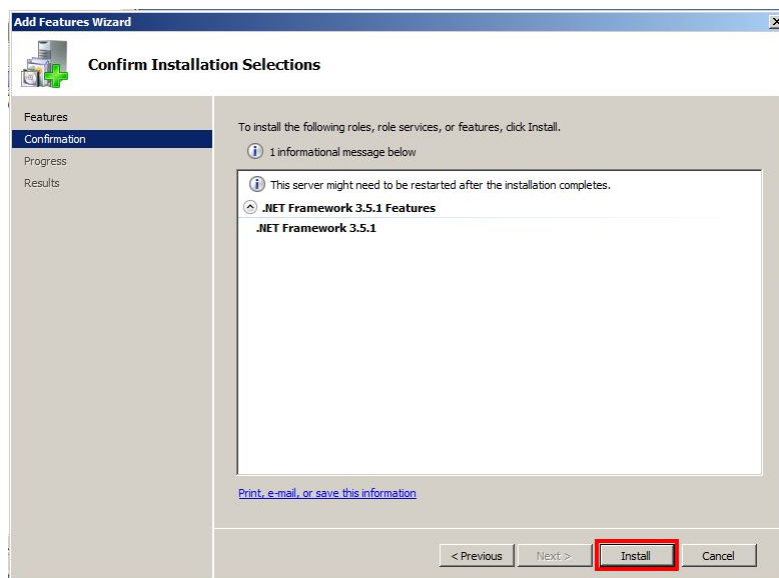
- 2) Click 'Features' from left side and click 'Add Features' from right side.



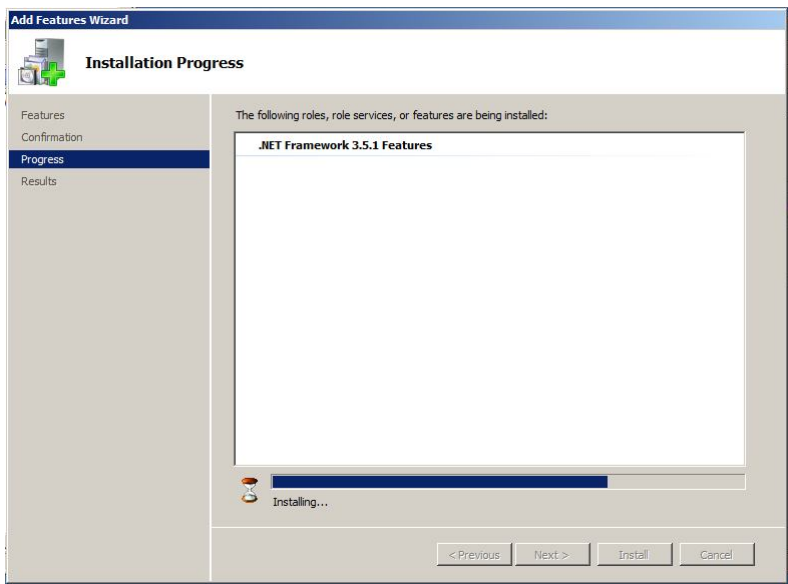
- 3) Select [.NET Framework 3.5] from 'Select Features' and click 'Next'.



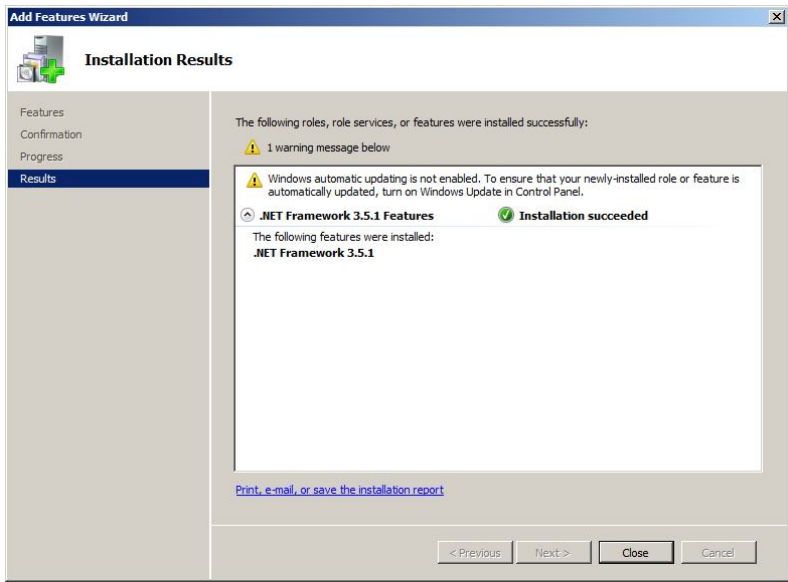
- 4) Click 'Install' from 'Confirm installation selections'



- 5) Proceed .NET Framework 3.5 installation.



6) Click 'Close' once installation is finished.

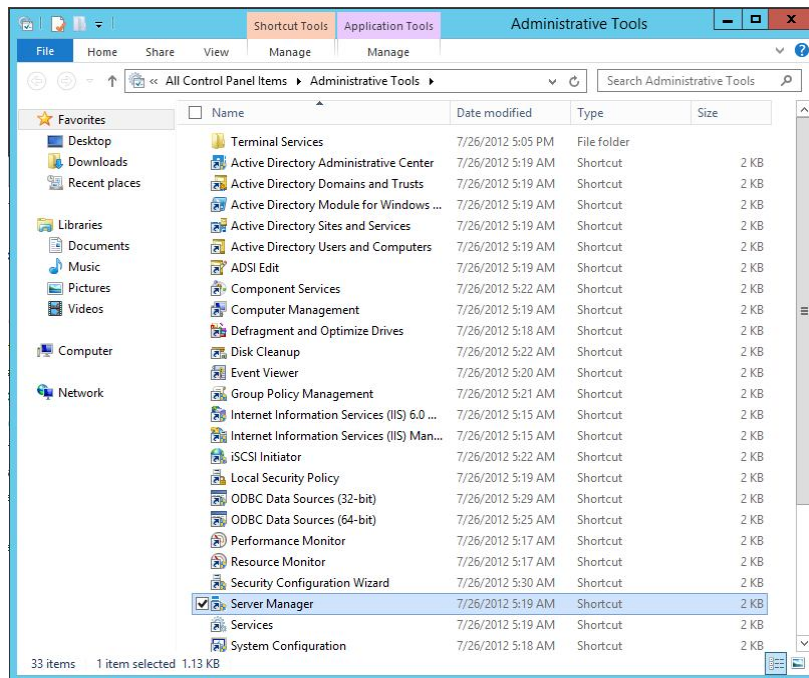


1.2.2.NET Framework 3.5 Installation on Windows Server 2012

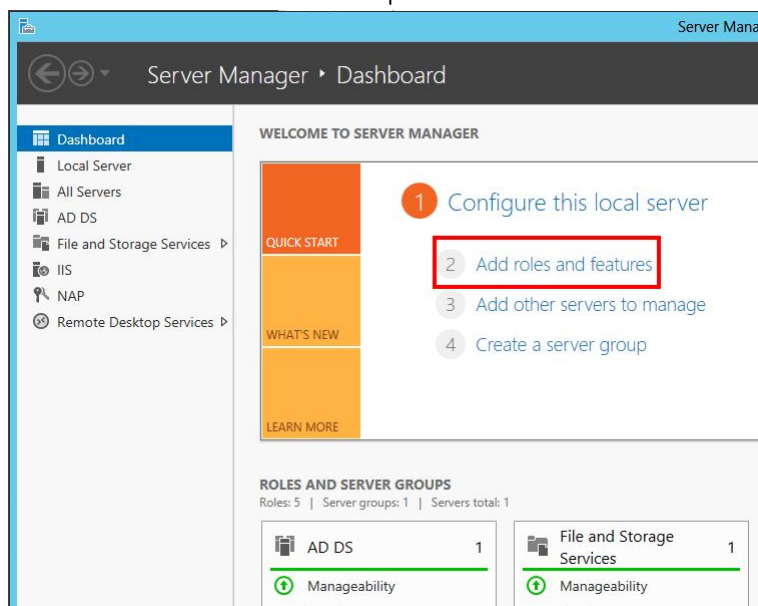
This chapter explains installation process of .NET Framework 3.5 on Windows Server 2012.

- Procedure

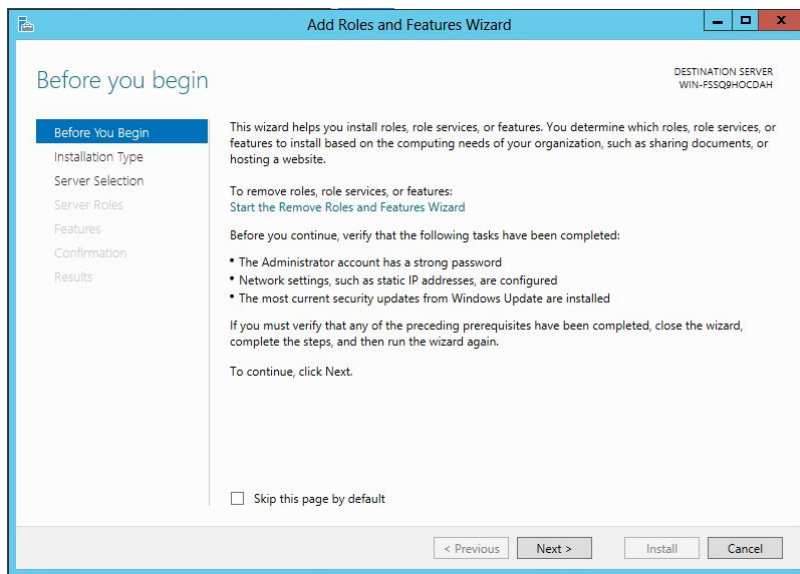
- 1) Go to [Control panel] → [Administrative Tools] → [Server Manager]



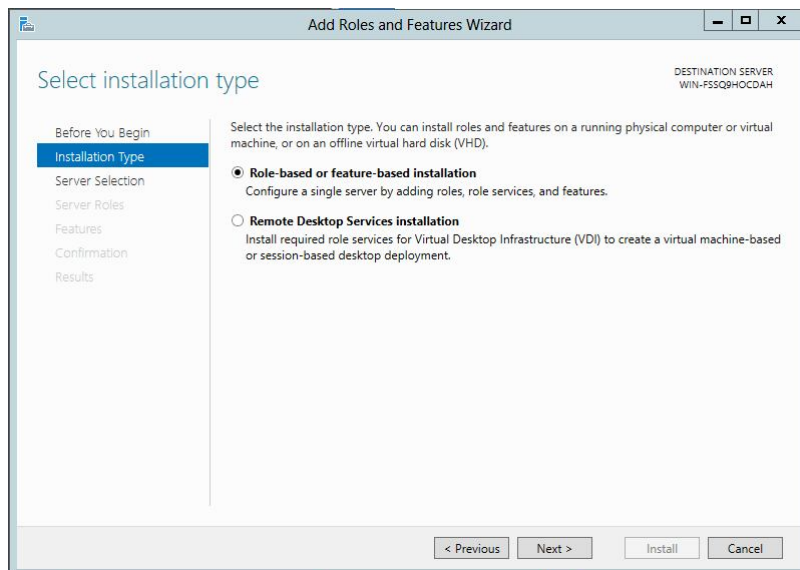
Click 'Add roles and features' from quick start menu.



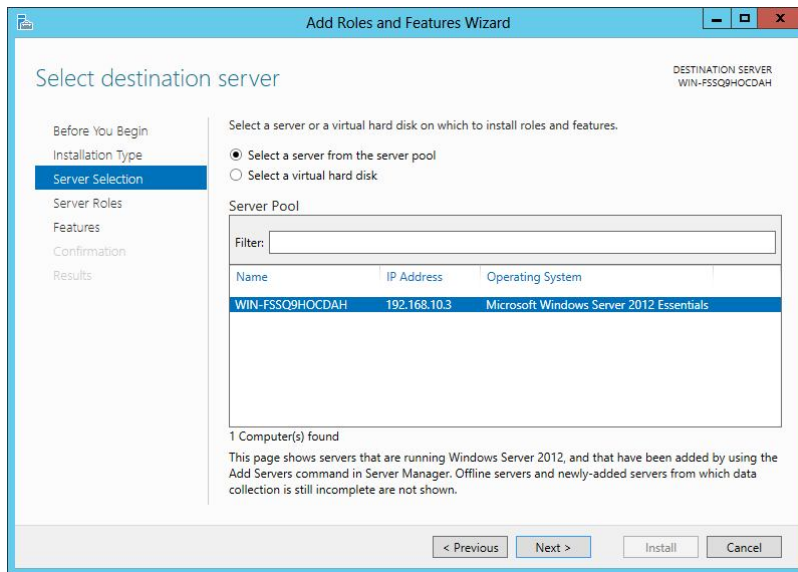
- 2) 'Add roles and features wizard' screen is shown. Click 'Next'.



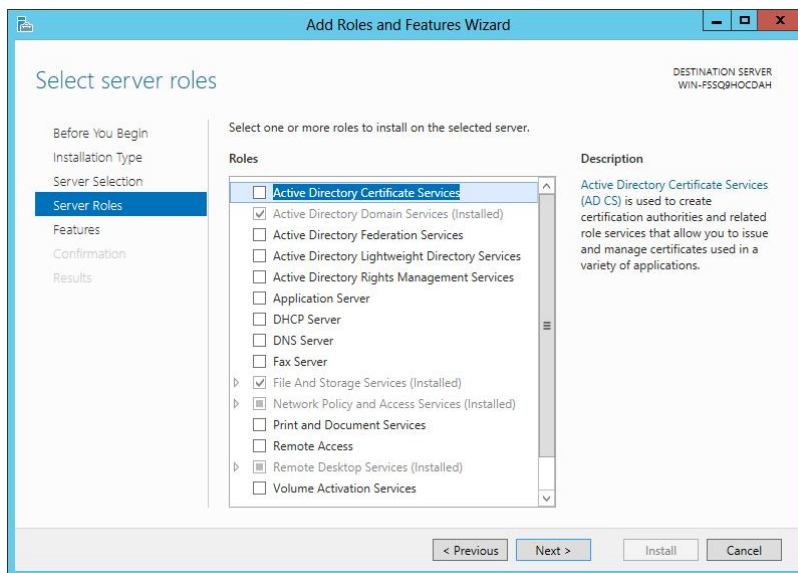
- 3) Select installation type and click 'next'.



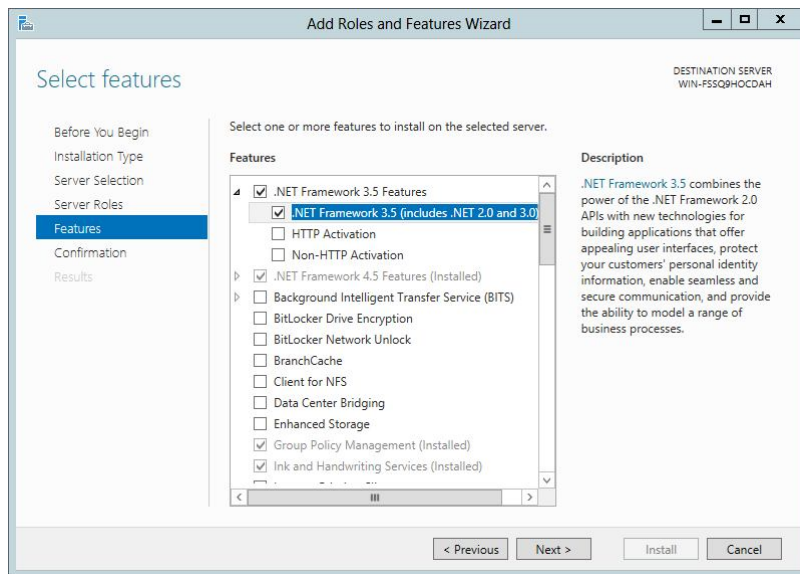
- 4) Select either server where roles and features are installed or virtual hard disk.



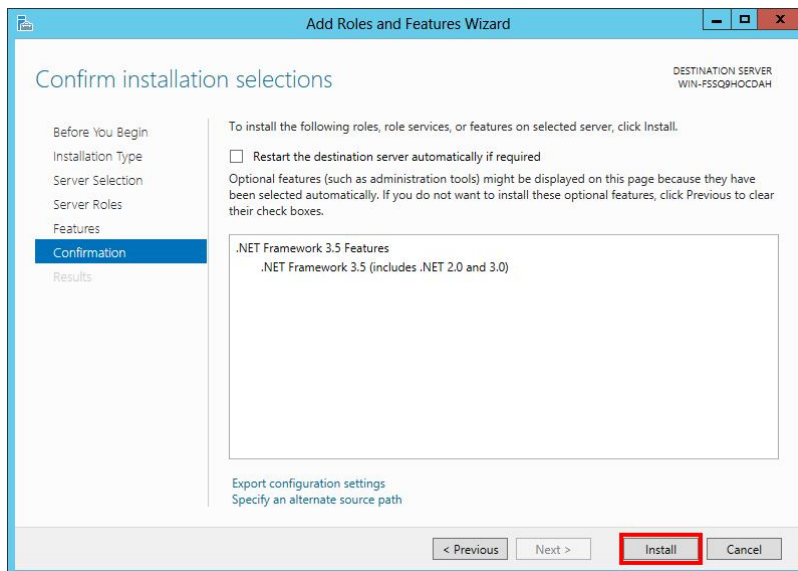
- 5) Select role to install on selected server and click 'Next'



- 6) Select [.NET Framework 3.5] from Features and click 'Next'.



- 7) Click 'Install' from Confirm installation sections.



- 8) Click 'Close' when the installation is completed.

