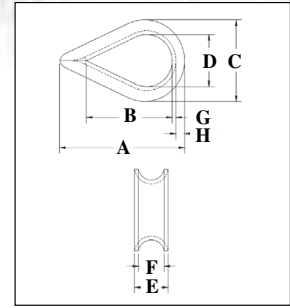


Wire Rope Thimbles



G-411

- Hot Dip galvanized steel.
- The standard choice for light duty applications and loading conditions.



Standard Wire Rope Thimbles

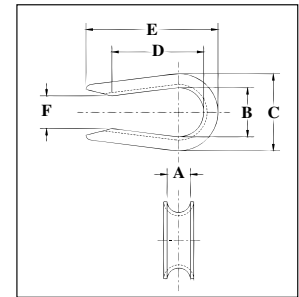
Rope Dia.		G-411 Stock No	Weight Per 100 (lbs.)	Dimensions (in.)								
(in.)	(mm)			A	B	C	D	E	F	G	H	
1/8	3-4	1037256	3.50	1.94	1.31	1.06	.69	.25	.16	.05	.13	
3/16	5	1037274	3.50	1.94	1.31	1.06	.69	.31	.22	.05	.13	
1/4	6-7	1037292	3.50	1.94	1.31	1.06	.69	.38	.28	.05	.13	
5/16	8	1037318	4.00	2.13	1.50	1.25	.81	.44	.34	.05	.13	
3/8	9-10	1037336	6.70	2.38	1.63	1.47	.94	.53	.41	.06	.16	
1/2	11-13	1037354	12.50	2.75	1.88	1.75	1.13	.69	.53	.08	.19	
5/8	16	1037372	34.50	3.50	2.25	2.38	1.38	.91	.66	.13	.34	
3/4	18-20	1037390	47.10	3.75	2.50	2.69	1.63	1.08	.78	.14	.34	
7/8	22	1037416	84.60	5.00	3.50	3.19	1.88	1.27	.94	.16	.44	
1	24-26	1037434	97.50	5.69	4.25	3.75	2.50	1.39	1.06	.16	.41	
1-1/8 - 1-1/4	28-32	1037452	175.00	6.25	4.50	4.31	2.75	1.75	1.31	.22	.50	

G-411 meets the performance requirements of Federal Specification FF-T-276b Type II, except for those provisions required of the contractor. For additional information, see page 444.



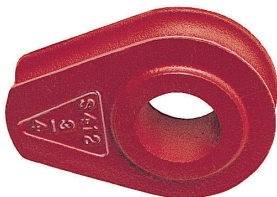
G-408
(Open Pattern)

- Hot Dip galvanized Steel.
- Recommended for light duty applications in which it is being assembled into another fitting (i.e., shackle or master link).



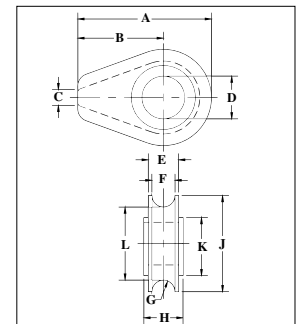
Open Pattern Thimbles

Rope Dia.		G-408 Stock No	Weight Per 100 (lbs.)	Dimensions (in.)					
(in.)	(mm)			A	B	C	D	E	F
1/4	6-7	1037531	3.00	.28	.69	1.06	1.41	2.03	.38
5/16	8	1037559	3.80	.34	.81	1.25	1.53	2.16	.50
3/8	9-10	1037577	7.00	.44	.94	1.47	1.72	2.47	.62
1/2	11-13	1037595	12.50	.53	1.12	1.75	1.97	2.84	.75
5/8	16	1037611	25.00	.66	1.38	2.38	2.34	3.59	1.00



S-412

- Cast Ductile Iron.
- Fits pin for open wire rope socket, boom pendant clevis and wedge socket.



Solid Wire Rope Thimbles

Rope Dia.		S-412 Stock No	Weight Per 100 (lbs.)	Dimensions (in.)										
(in.)	(mm)			A	B	C	D	E	F	G	H	J	K	L
1/2	13	1037121	.61	2.81	1.75	.25	1.06	.75	.56	.28	.88	2.13	1.63	1.56
5/8	16	1037149	2.21	4.69	3.00	.38	1.31	1.06	.81	.41	1.13	3.38	2.25	2.56
3/4	18-20	1037167	2.32	4.69	3.00	.38	1.50	1.06	.81	.41	1.38	3.38	2.25	2.56
7/8	22	1037185	5.45	6.06	3.81	.50	1.75	1.38	1.06	.53	1.63	4.50	3.25	3.44
1	24-26	1037201	5.25	6.06	3.81	.50	2.13	1.38	1.06	.53	1.81	4.50	3.25	3.44
1-1/8	28-30	1037229	9.29	7.25	4.56	.63	2.38	1.75	1.31	.66	2.06	5.38	3.88	4.06
1-1/4 - 1-3/8	32-35	1037247	9.81	7.25	4.56	.63	2.63	1.94	1.53	.78	2.31	5.38	3.88	4.13