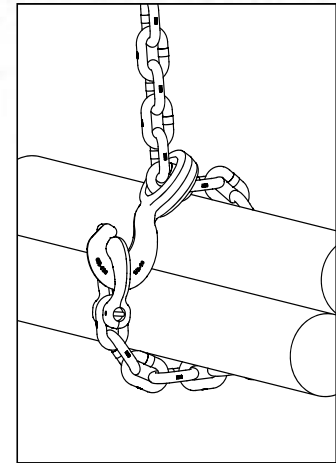


Crosby® Grade 100 Chain Fittings

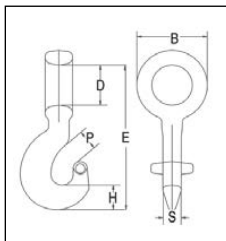


A-1355
Chain Choker Hook

- Forged Alloy Steel - Quenched and Tempered.
- Individually Proof Tested with certification.
- Rated for Grade 100 chain in choker applications.
- Each hook has a Product Identification Code (PIC) for material traceability, along with the size and the name Crosby & U.S.A. in raised letters.
- 25% stronger than Grade 80.
- Fatigue rated at 1-1/2 times the Working Load Limit at 20,000 cycles.
- "Look for the Platinum Color - Crosby Grade 100 Alloy Products."
- For use with S-1325 Chain Coupler Link.



A-1355 Chain Choker Hook



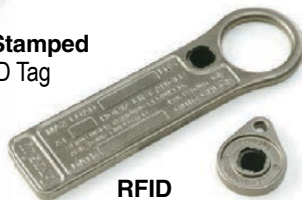
Grade 100 Alloy Chain Size		Working Load Limit (lbs.)*	A-1355 Stock No.	Weight Each (lbs.)	Dimensions (in.)					
(in.)	(mm)				B	D	E	H	P	S
1/4-5/16	7-8	5700	1015204	.77	2.05	1.18	4.83	.79	.69	.65
3/8	10	8800	1015213	1.65	2.66	1.57	6.07	.93	.93	.69
1/2	13	15000	1015222	3.14	3.35	2.03	7.61	1.18	1.26	.94
5/8	16	22600	1015231	6.97	4.21	2.52	9.68	1.54	1.12	1.18

* Ultimate Load is 4 times the Working Load Limit.

SLING IDENTIFICATION TAG KITS



Stamped ID Tag



RFID Equipped Tags



Forged ID Tags



Stamped RFID Tag



Wire Rope



RFID QUIC Tag

Stamped ID Tags

- Heavy Duty, Prestamped, Zinc plated metal tag.
- 4-1/8" x 1-7/16" tag dimensions.
- 2-1/2" diameter metal attaching ring.
- Tag prestamped for simple inclusion of sling type, Working Load Limit, reach, serial number, chain size and grade.

ID Tag Stock No.	Carton Qty.	Weight Per Carton (lbs.)
115244	50	10.55

ID Tags

- Heavy Duty tags.
- 1-5/16" diameter ring opening (will fit 1/4" - 5/8" A-1337).
- Chain tags meet requirements of ASME B30.9 for Sling Identification.
- Raised edge and recessed pads to protect lettering.
- Raised lettering for quick reference.



Stock No.	Style	Material Type	RFID Equipped	Tag Size (in.)	Weight Each (lbs.)
115369	Chain	Cast Stainless Steel	Yes	6-5/16 x 1-5/8	.46
115350	Wire Rope	Cast Stainless Steel	Yes	1-11/16 x 1-5/16	.07
115217	Chain	Forged Steel	No	5-3/4 x 1-7/8	.40
115353	Chain	Stamped Zinc Plated Steel	Yes	5-3/4 x 1-5/8	.29
115355	Wire Rope	Stamped Zinc Plated Steel	Yes	1-11/16 x 1-5/16	.04
1224692	Zip Tie	High Crystalline Polyamide	Yes	7.625	.05