



# **Commercial Solar Portfolio**

# NORTH PALM SPRINGS



## North Palm Springs Project Overview

Location: Palm Springs, California (2 project sites)  
Installation Type: Single Axis Tracker Ground Mount  
System Size : 7.8 Megawatt  
Completion Date: March 2012



# STAPLES CENTER & NOKIA THEATRE





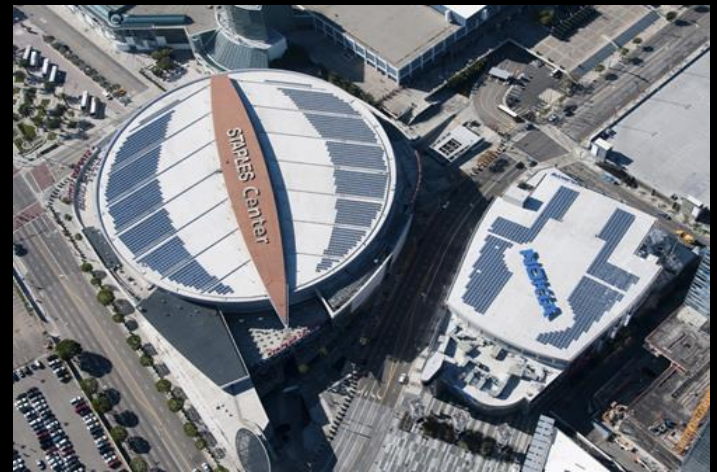
## Staples and Nokia Theater Project Overview

Location: Los Angeles, California (2 Sites)

Installation Type: SkyMount™ Rooftop

System Size: 512 Kilowatts

Completion Date: December 2008



# WHITE ROSE DISTRIBUTION CENTER





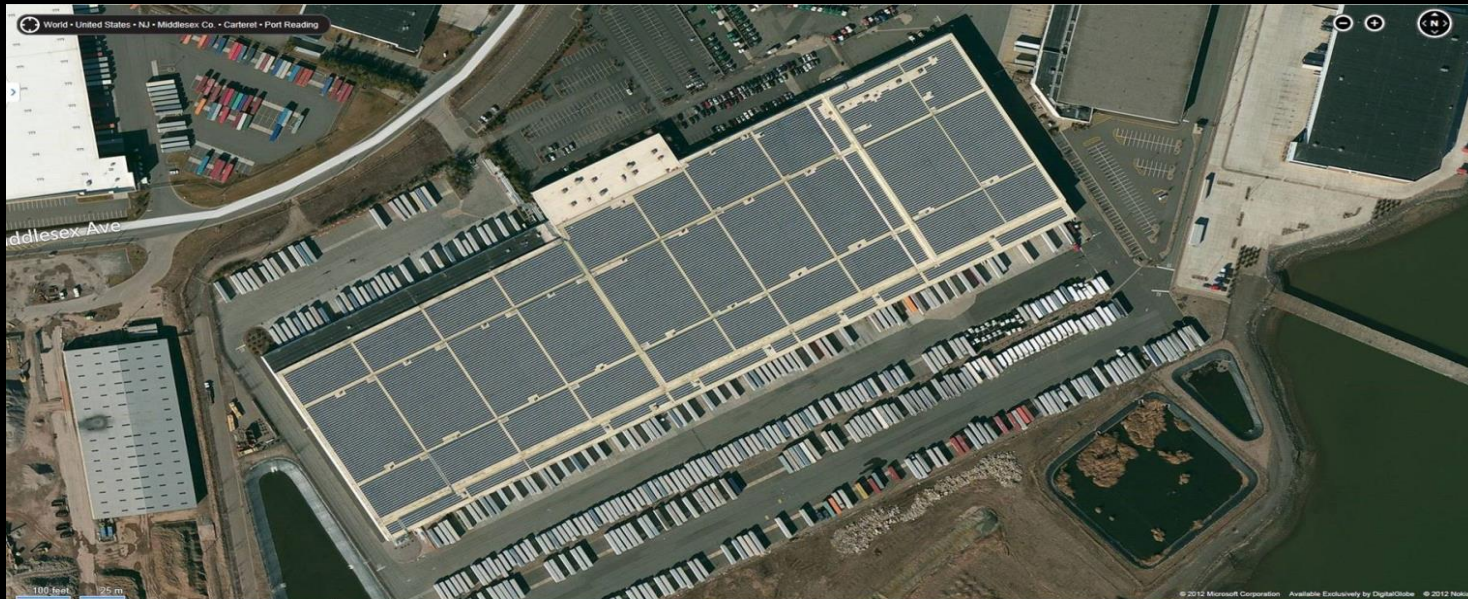
## White Rose Project Overview

Location : Carteret, NJ

Installation Type : SkyMount™ Rooftop

System Size : 5 Megawatt

Completion Date: December 2011



# AEROJET



6 MW, Aerojet single-axis tracker, Sacramento, CA



## Aerojet Project Overview

Location: Folsom, California

Installation Type: Single-Axis Tracker System

System Size: 6 Megawatts

Area: 40+ acres

Completion Date: May 2010



# TEMESCAL CANYON RV, LLC



## Temescal Canyon Project Overview

Location: Temescal, CA

Installation Type: Custom Solar Shade Canopies

Size: 1.75 Megawatts

Completion Date: July 2008



# 20<sup>TH</sup> CENTURY FOX MOTION PICTURE STUDIOS





## 20<sup>th</sup> Century Fox Project Overview

Location: Los Angeles, CA

Installation Type: SkyMount<sup>®</sup> and traditional mounting

Size: 388 kilowatts

Completion Date: August 2010

# COX ENTERPRISES, INC.



## Cox Enterprises Project Overview

Location: Rancho Santa Margarita, CA

Installation Type: Commercial Roof

System Size: 100 Kilowatts

Completion Date: November 2007



# COX COMMUNICATIONS ATLANTA







## Cox Communications Atlanta Project Overview

Location: Stockbridge, GA

Installation Type: Commercial Roof System

Size: 112 Kilowatts

Completion Date: December 2008

# RALEY'S





## Raley's Project Overview

Location: Lincoln, CA

Installation Type: Commercial Roof System

Size: 307 Kilowatts

Completion Date: November 2007



# COSTCO





## Project Overview

Location: Hazlet, NJ

Installation Type: Commercial Roof System

Size: 529 Kilowatts

Completion Date: January 2010

# MARSHALL MEDICAL FACILITY



## Marshall Medical Project Overview

Location: El Dorado Hills, CA

Installation Type: Parking Shade Structures

Size: 670 Kilowatts

Completion Date: January 2009



# PLACER COUNTY JUVENILE DETENTION FACILITY





# Placer County JDC Project Overview

Location: Auburn, CA

Installation Type: Fixed Ground Mount

System Size: 400 Kilowatts

Area: 2 Acres

Completion Date: October 2007



# BLT QUATTRO DEL NORTE



## BLT Quattro Del Norte Project Overview

Location: Oxnard, CA

Installation Type: Rooftop & Covered Parking

System Size: 429 Kilowatts

Completion Date: July 2012



# 333 Route 46



## 333 Route 46 Project Overview

Location: W. Mountain Lakes, NJ

Installation Type: Ballasted rooftop, Panel Claw Grizzly Bear Racking

System Size: 252 Kilowatts

Completion Date: January 2012



# 350 Clark



## 350 Clark Project Overview

Location: Budd Lake, NJ

Installation Type: Ballasted rooftop, Panel Claw Grizzly Bear Racking

System Size: 252 Kilowatts

Completion Date: December 2011



# BALDWIN PARK SCHOOL DISTRICT



Geddes Elementary School

© 2013 Google

Google earth

Imagery Date: 4/16/2013 11 S 411736.54 m E 3773285.22 m N elev 407 ft eye alt 1066 ft

1994





## Baldwin Park School District Project Overview

Location: Baldwin Park, CA (7 project sites)

Installation Type: Rooftop and Carport

System Size: 2.2 Megawatts

Completion Date: 2011 - 2012



# PECAN PARK





## Pecan Park Project Overview

Location: Los Angeles, CA

Installation Type: SkyMount™ Rooftop

System Size: 30 Kilowatts

Completion Date: May 2010

# HOLLYWOOD CENTER STUDIOS



## Hollywood Center Studios Project Overview

Location: Los Angeles, CA (2 project sites)

Installation Type: SkyMount™ Rooftop

System Size: 230 Kilowatts

Completion Date: June 2011



# SENATOR SIMON FEDERAL BUILDING





## Senator Simon Federal Building Project Overview

Location: Carbondale, IL

Installation Type: Rooftop

System Size: 101.475 Kilowatts

Completion Date: September 2010

# CALIFORNIA INDEPENDENT SYSTEM OPERATOR (CALISO)







## CALISO Project Overview

Location: Folsom, CA

Installation Type: SkyMount™ Rooftop

System Size: 741.28 Kilowatts

Completion Date: June 2010



# MERCY HOUSING





## Mercy Housing Project Overview

Location: Sacramento, CA

Installation Type: Rooftop

System Size: 953.25 Kilowatts

Completion Date: March 2011

# KDC HEADQUARTER BUILDING



## KDC Headquarters Project Overview

Location: Bedminster, NJ

Installation Type: Peaq Solar Canopies

System Size: 579.60 Kilowatts

Completion Date: October 2011



# EVROS GREECE





## Evros Greece Project Overview

Location: Evros, Greece

Installation Type: Fixed Tilt Ground Mount

System Size: 2 Megawatts

Completion Date: March 2013

# ORESTIADA GREECE





## Orestiada Project Overview

Location: Orestiada, Greece

Installation Type: Fixed Tilt Ground Mount

System Size: 4.4 Megawatts

Completion Date: March 2013



# RODOPI GREECE



## Rodopi Project Overview

Location: Rodopi, Greece

Installation Type: Fixed Tilt Ground Mount

System Size: 1.082 Megawatts

Completion Date: March 2013



# EMMERSON RANCH





## Emmerson Ranch Project Overview

Location: Redding, CA

Installation Type: Fixed Tilt Ground Mount

System Size: 55.35 Kilowatts

Completion Date: April 2010

# APPLE ORCHARD





## Apple Orchard Project Overview

Location: North Brunswick, NJ

Installation Type: Fixed Tilt Ground Mount

System Size: 6.8 Megawatts

Completion Date: August 2012