

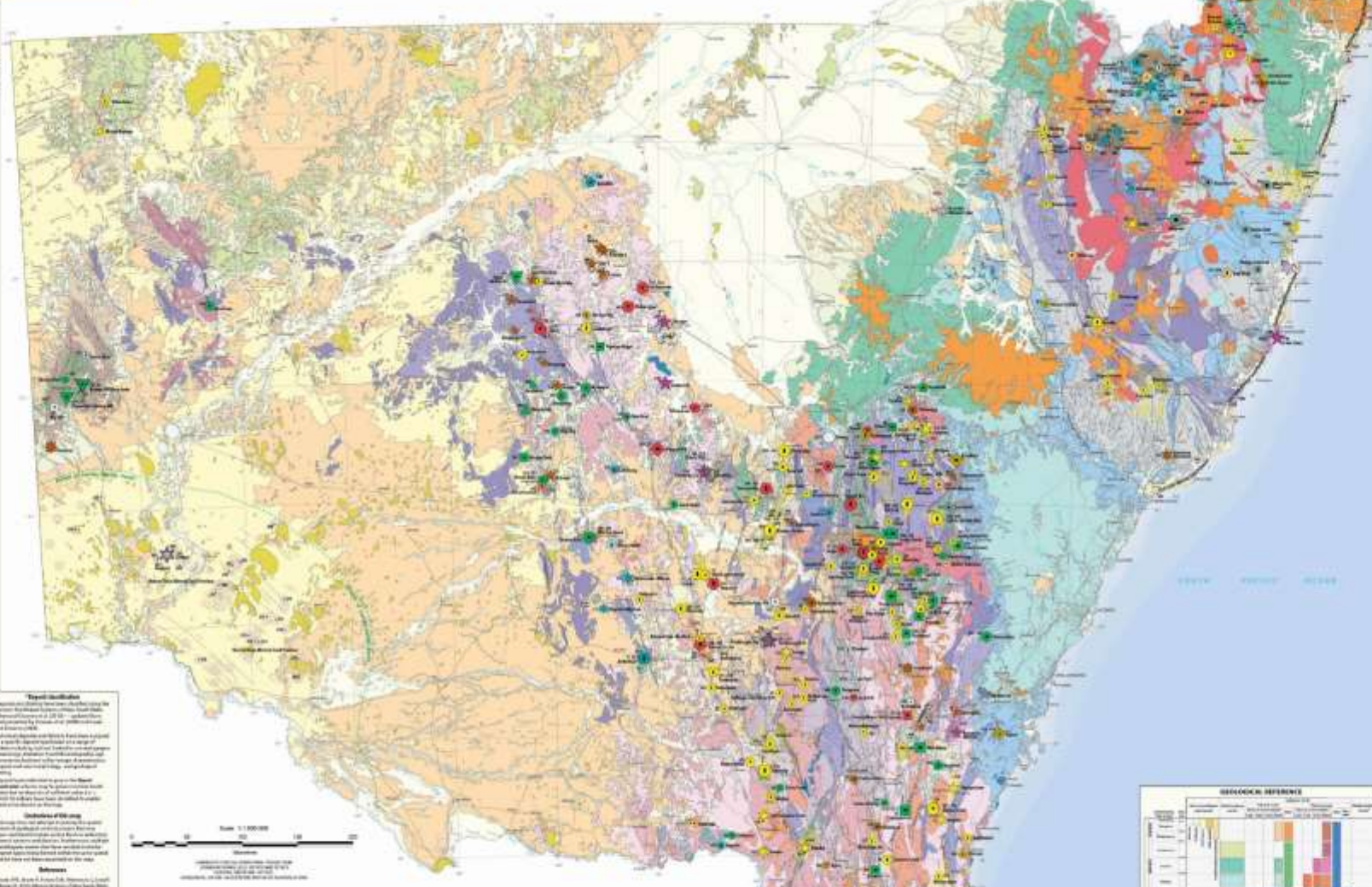
MINERALISATION REFERENCE

How to read the map symbols

1. The shape of the mineralisation symbol indicates the mineralisation type. The shape of the symbol is defined in the legend.
2. The size of the symbol indicates the mineralisation grade. The size of the symbol is defined in the legend.
3. The colour of the symbol indicates the mineralisation age. The colour of the symbol is defined in the legend.
4. The orientation of the symbol indicates the mineralisation trend. The orientation of the symbol is defined in the legend.
5. The location of the symbol indicates the mineralisation location. The location of the symbol is defined in the legend.

Mineralisation symbols defined by symbol shape

Mineralisation Type	Symbol Shape	Description
Gold	Circle	Gold mineralisation
Iron	Square	Iron mineralisation
Copper	Triangle	Copper mineralisation
Zinc	Diamond	Zinc mineralisation
Lead	Star	Lead mineralisation
Uranium	Hexagon	Uranium mineralisation
Other	Circle	Other mineralisation



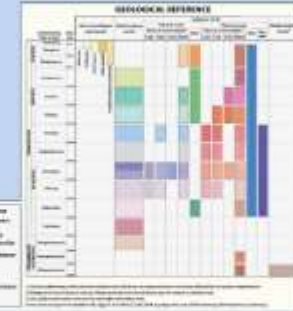
Legend
This legend is based on the Mineralisation Reference and the Mineralisation Reference is based on the Mineralisation Reference.

- Mineralisation symbols defined by symbol size**
- Large
 - Medium
 - Small

- Mineralisation symbols defined by symbol color**
- Gold
 - Iron
 - Copper
 - Zinc
 - Lead
 - Uranium
 - Other

Table of Symbols

Symbol	Mineralisation Type	Grade	Age	Trend	Location
Large Circle	Gold	High	Recent	North	Central West
Medium Square	Iron	Medium	Recent	North	Central West
Small Triangle	Copper	Low	Recent	North	Central West



Geological Reference

This chart provides a detailed key for the geological units shown on the map. It includes names of geological formations, their ages, and their corresponding colors.

Geological Reference Table:

Geological Unit	Age	Color
Wentworth	Recent	Light Blue
Wentworth	Recent	Light Blue
Wentworth	Recent	Light Blue

METALLOGENIC MAP OF NEW SOUTH WALES
1:1 500 000

Resources NSW Energy

