

ELECTROMAGNETICA



I G R E G O



## IGREGO

Originality and innovation, elegance and simplicity of the form are the main features of Igrego's development.

Igrego integrates the most efficient LED technology in a light fixture with minimalist design.

[www.igrego.com](http://www.igrego.com) / +40 214 042 159 / +40 749 016 441 / [contact@igrego.com](mailto:contact@igrego.com)



## SPECIFICATIONS

The efficiency of over 100 lm/w, the luminous flux of minimum 1,400 lm, the 14W power and the CRI>80 are due to the 12 efficient LEDs.

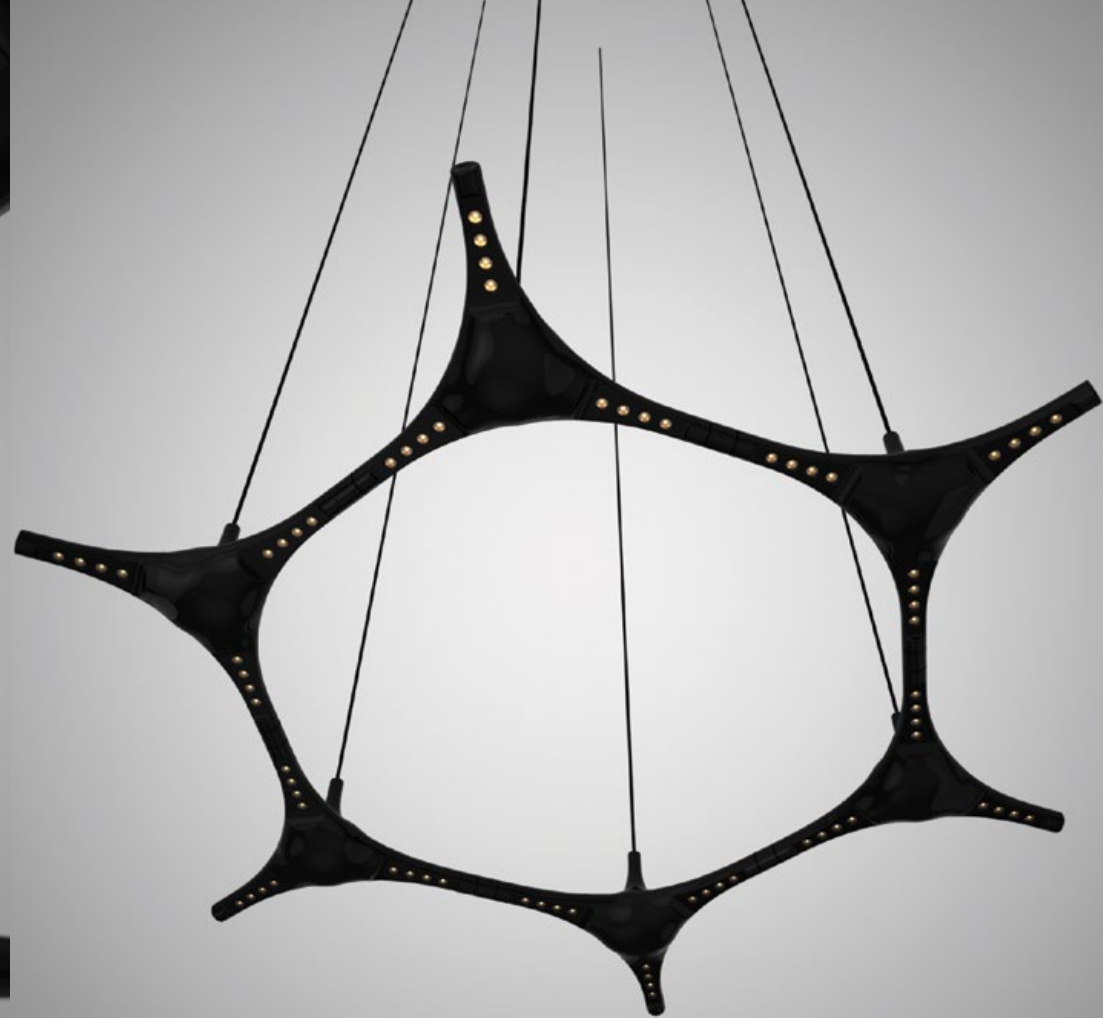
The high performances of the Igrego light fixture are completed with the use of the three types of 13°, 30° and 50° lenses, as well as of the two 3,000 and 4,000 K colour temperatures.

Due to its small dimensions of 410x356x167mm and to the fixture weight of 0.9 kg, Igrego is easy to handle and to mount both individually and as a module of a group.











## USE

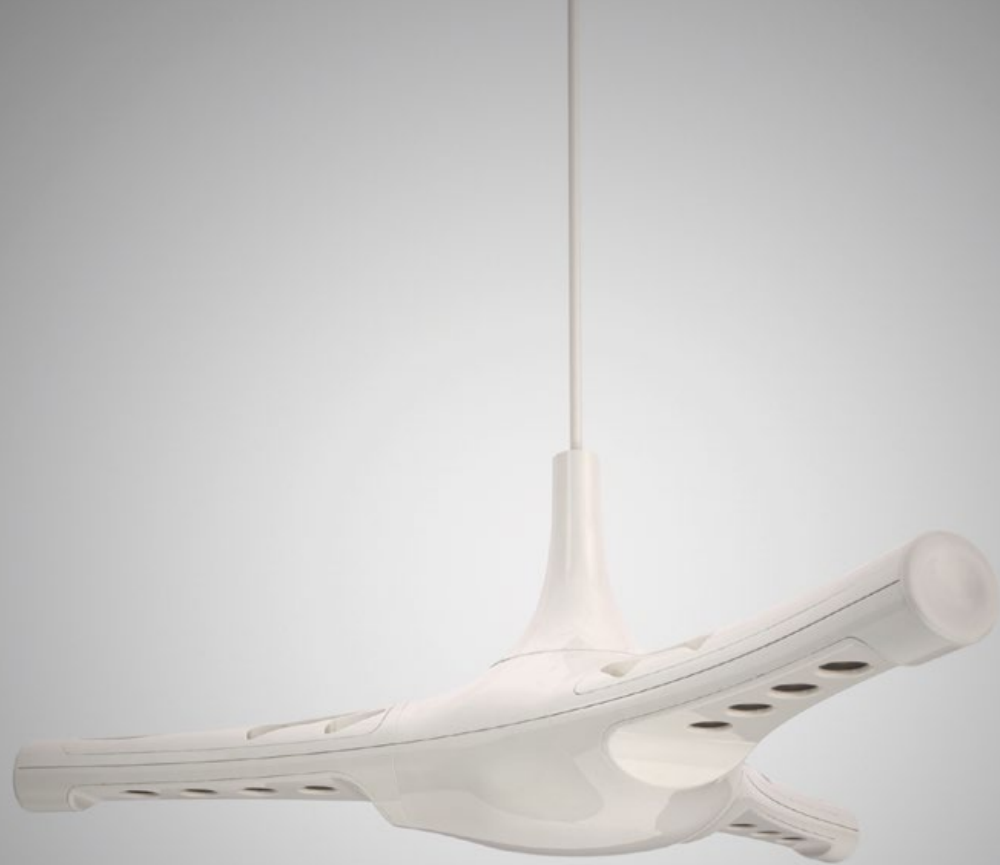
From minimalist indoor spaces to indoors with industrial influences, from hotel receptions to restaurant interiors, Igrego will perfectly fit everywhere, whether it is used individually or in a group of several interconnected light fixtures.

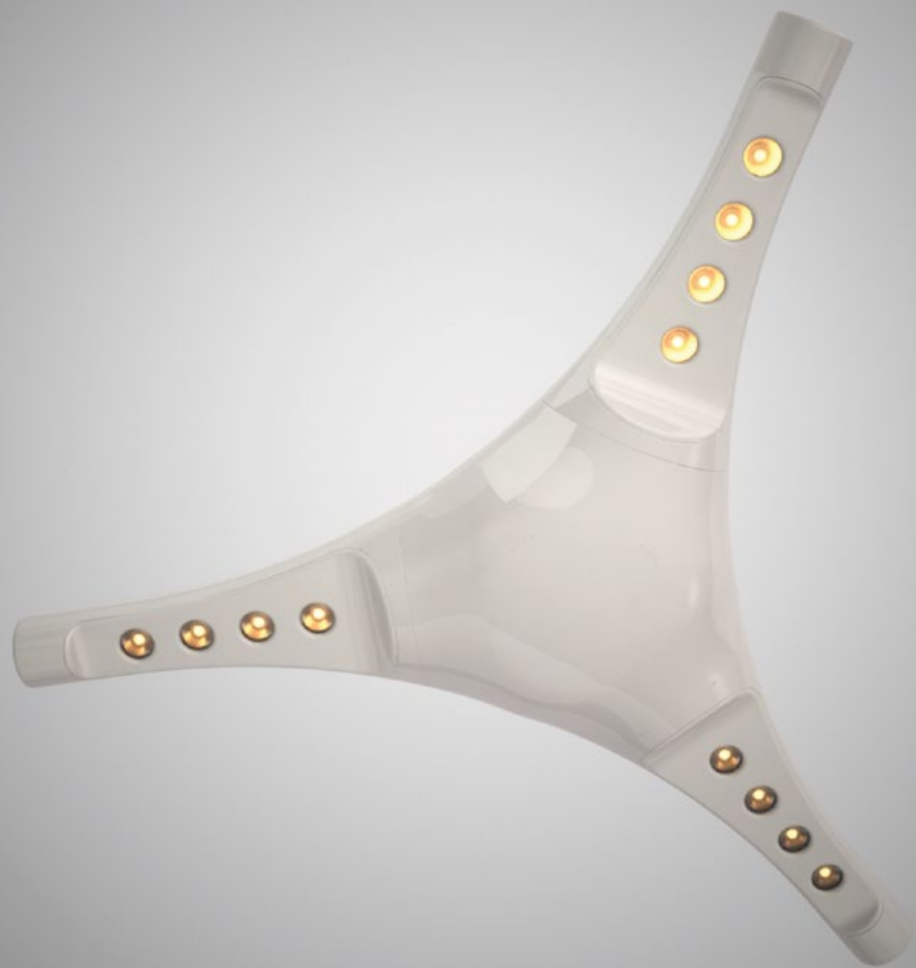
It can be both surface-mounted, on the ceiling or on the wall and suspended individually or as a module, therefore it can be used in any place where light is needed.

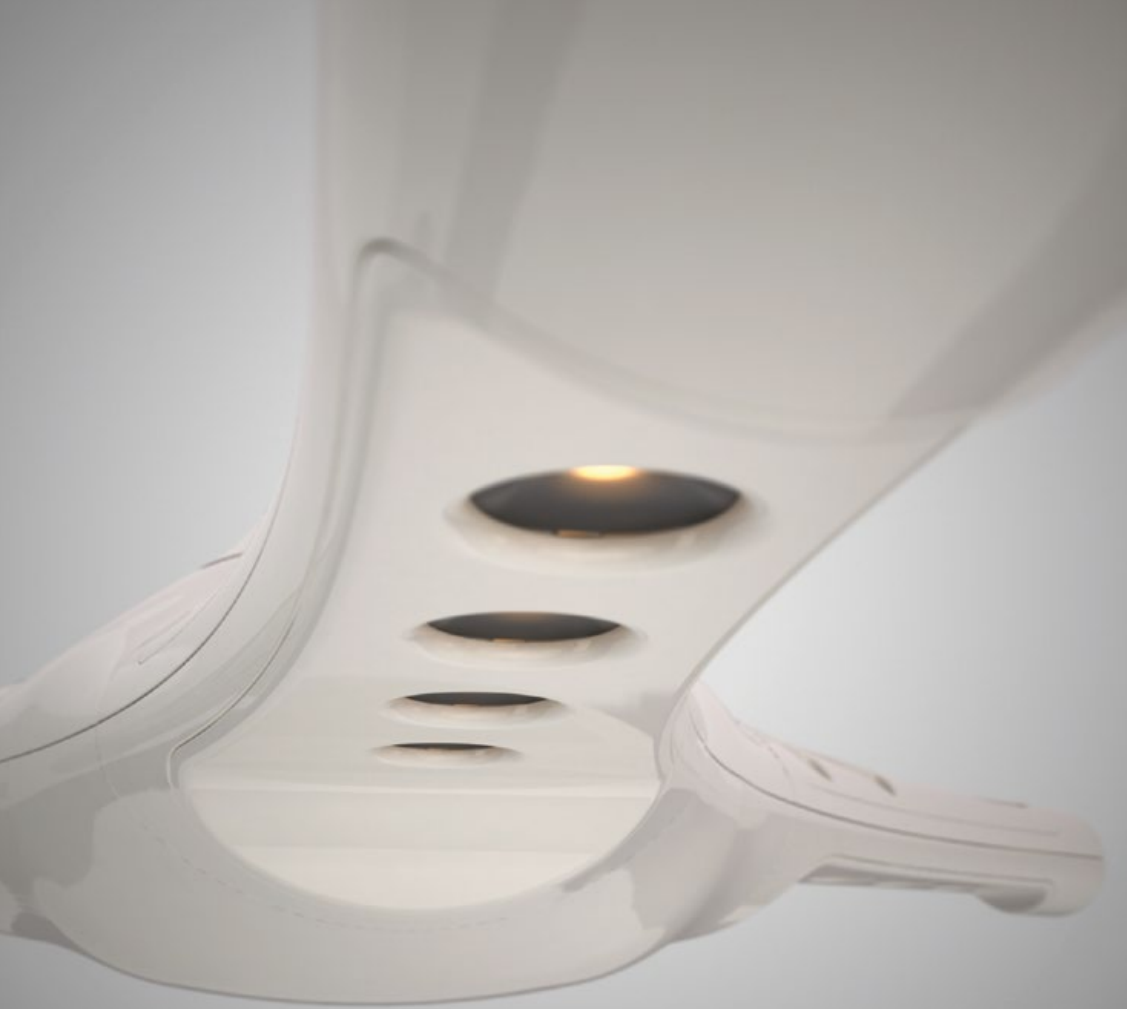














## DESIGN

The modern design conceived by the Electromagnetica design and engineering team combines the elegance and the simplicity of the organic form with the complexity of the concept and of the state-of-the-art technologies in order to create a fascinating product. An important design element is the light control by rotating the arms of the light fixture, giving the possibility to switch from a directional lighting on targeted areas to an indirect ambient lighting, whenever is necessary.





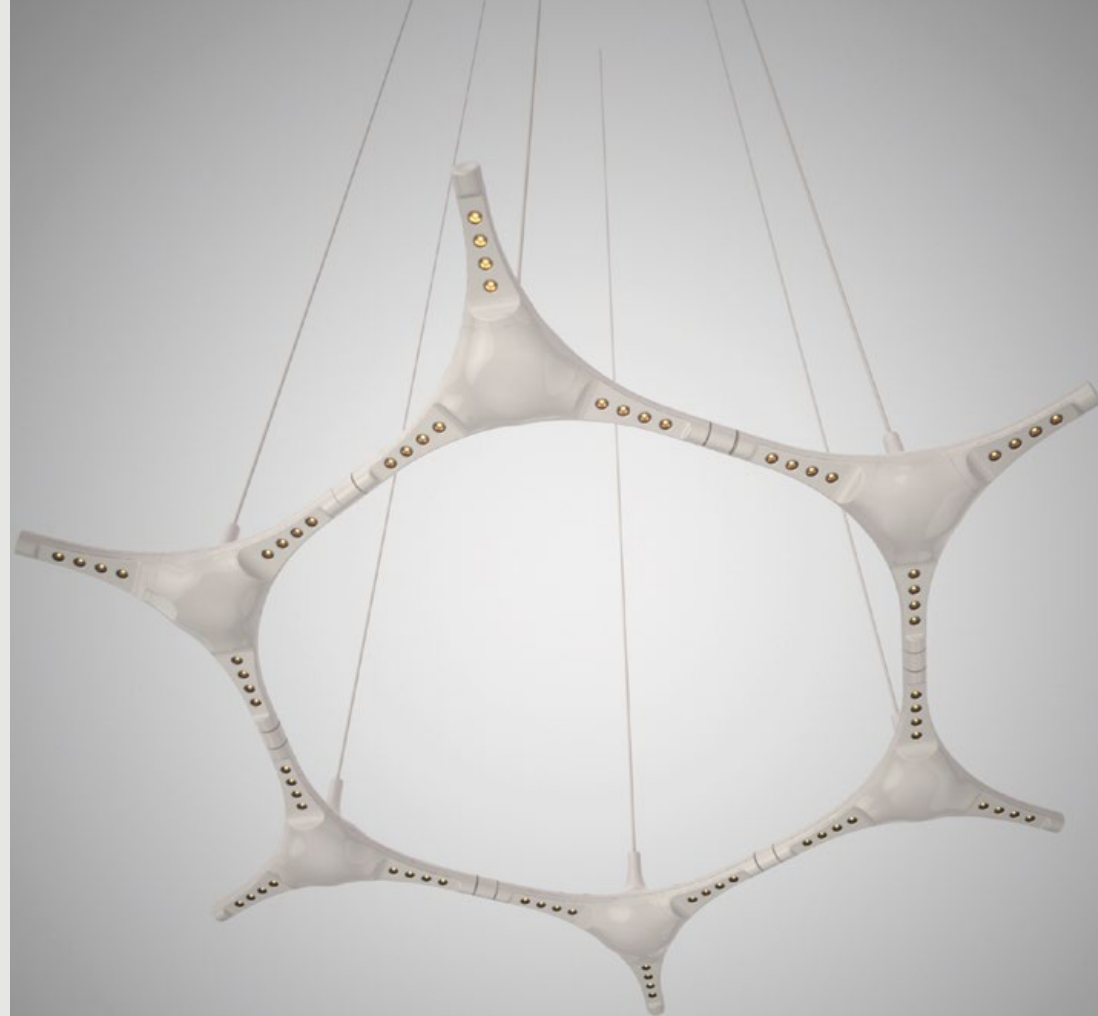


## MODULARITY

The modularity of the Igrego light fixture refers to the possibility of interconnecting several Igrego light fixtures in a network, thus forming a group, which generates more light and more emotion.

The beauty of the modularity is that the formed group can be changed at any time.

Another lamp can be connected to the group at any time without the necessity of a new supply, the connection to the main supply being made through one of the arms of an already connected lamp.





















ELECTROMAGNETICA

I G E G O