



# O.L.R.W. Newsletter

Oahu League of Republican Women  
Shirlene Ostrov, President

Pam Smith, Editor • 808-398-5556 • olrwnews@gmail.com

September 2022

Luncheon / Meeting  
September 1, 2022  
Ala Moana Hotel  
Carnation Room

Self Parking \$10.00

11:00 A.M. Social Hour  
11:30 A.M. Meeting  
12:00 Noon Lunch  
12:30 P.M. Speaker

Cost

\$40.00

## Menu

### Spinach Salad

w/ Pecans, Cranberries &  
Feta Cheese  
Balsamic Viniegrete

### Charbroiled Chicken Breast W/Mango BBQ Glaze

Corn Relish

Medly of Fresh Vegetables

Garlic Mashed Potatoes

### Guava Chiffon Cake

Beverages

Reservations/Cancellations

**\*\*\*Reservations are limited to the first 60. We will have a wait list in case we get cancellations\*\*\***

Carol Thomas  
akamaicarol@gmail.com  
808-255-5527  
www.olrw.org

**Reservations/Cancellations must be made by August 24**

All lunches are reserved, so *No Shows will be charged for their lunch.* Please - no walk-ins.



## September Speaker Fritz Rohlfing

Fritz will give us an analysis of the primary election.



### Inside

**The Prez Says 2**  
**Blast from the Past 3**  
**August Luncheon 5**  
**OLRW PAC info 6**  
**Letters to the Editor 7**

**2022 Dues**

**\$35.00.**

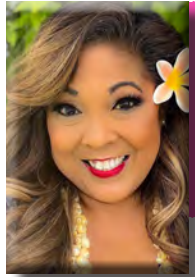
**Due Now**



HAU'OLI LA HANAU

## September Birthdays

|                          |    |
|--------------------------|----|
| Tracy H. Okubo           | 1  |
| Kimberly Kepner Sybounmy | 4  |
| Gina Tingstrom           | 6  |
| Elsie Lee                | 15 |
| Jayne Montz              | 16 |
| Gemma Disuanco           | 18 |
| Sue Djou                 | 19 |
| Dr Phil Hellreich        | 19 |
| Kevin Chong Kee          | 21 |
| Mark White               | 22 |
| Nikolai Tsang            | 23 |
| Robin Midkiff            | 29 |
| Beverly Espiritu         | 30 |
| Peggy Regentine          | 30 |



# The Pres Says... Shirlene Ostrov, President

It's back to school season and many of us have children or grandchildren that are embarking on another year of learning. But why should that cause trepidation?

Many schools, and even colleges (my daughters' schools in particular) are indoctrinating children with a left-wing agenda hostile to the nation's Founding Fathers and some efforts to educate students about racism and slavery is framed as an insult to the country's lofty founding principles.

Social and emotional learning is the latest trend at your child's school. It sounds beneficial, but that's a disguise. In truth, social and emotional learning indoctrinates kids with extremist ideas many parents don't condone.

There are many elementary school parents around the country in an uproar. They're complaining that teachers are putting words such as "nonbinary" on the chalkboard and telling kids, including kindergarteners, they can live life as a gender different from what they were assigned at birth. Parents were told by school authorities that they can't opt their children out.

Fighting social and emotional learning is an uphill battle because it's not only favored by the left-leaning

educational bureaucracy, it's also big business. "The SEL ecosystem today is flush with dollars," reports several social and emotional learning industry consultants.

Billions in federal COVID-19 relief money for schools are being used to buy social and emotional learning programs and fund instructors of it. Advocates and companies that produce the materials lobby Congress and the federal Department of Education to ensure legislative language precisely matches what they're selling.

But parental opposition is also surging. Attorney General Merrick Garland asked the FBI to look into parents protesting issues like social and emotional learning at school board meetings. His son-in-law is a co-founder of Panorama Education, a company raking in millions selling social and emotional learning materials to school districts. Conflict of interest?

As for elementary schools, gender dysphoric kids make up less than 1% of the school population. Protect them, of course, from bullying and discrimination. They need to feel safe. But don't brainwash the rest with one-sided, repeated lessons about gender issues.

But recently, social and emotional learning purveyors, including the Collaborative for Academic, Social, and Emotional Learning, have openly revised their goals. The collaborative advocates for "transformative SEL" to promote "justice-oriented civic engagement." Translation: Make your kids into activists.

Who's in charge of what your child learns? Parents need to take control. It's not an easy fight against the combined forces of educational profiteers and left-wing activists. But the stakes are too high to accept defeat.

## HELP NEEDED

### Feature Writers

We would like to do a series of biographies of our members. We need someone that is willing to interview members and write a short article about what you learned. We would be happy to have more than one person do this. No need for a monthly commitment.

### Is one of our members ill?

If you know of a member that is sick or has had a death in the family please let us know so we can send them get well wishes or condolences. Call Corresponding Secretary Nancy Gallagher at 808-343-1385. Please leave a message if Nancy doesn't pick up. She will call you back.

### Photos

We need people to take photos at our luncheons. if you take pictures please send them to Pam. We will print as many pictures as we have room for in each issue.

We would like to have one person commit to take photos of our speakers and the 50/50 winner every month.

*If you would like to help us out with any of these things you*

*can email Pam Smith at [olrwnews@gmail.com](mailto:olrwnews@gmail.com)*

## Welcome

to our new member this Month

**Ann Smith**



are looking forward to getting to know you!



# Happy Constitution Day September 17



Iowa was the first to start celebrating Constitution Day—back in 1911! By 1949 each of the 48 states had adopted Constitution Day through formal proclamations.

Americans celebrate Constitution Day on Sept. 17. This marks the important date in 1787 when 39 delegates of the Constitutional Convention signed the US Constitution. Benjamin Franklin (the oldest person to sign the document) struggled with his signature because of his age, and legend states that tears streamed down his face as he wrote.

Constitution Day finally became an official holiday in 2004. Many people felt it was important to recognize and teach young people about our country's unique and amazing founding document. To this day, the law requires all schools that receive federal funding to teach about the Constitution on that day.

Jacob Shallus, a Pennsylvania General Assembly clerk, penned the original parchment inscription of the US Constitution. He wrote the entire document for a wage of \$30—a large sum in those days! It is on display in the Rotunda at the National Archives Museum where more than a million people visit each year.

Read more about Constitution Day and Constitution Week on the National Archives website and blog.


## A Blast From The Past.



These items are from our September 2014 newsletter.

We'll work on bringing some of these items back to our newsletter.

**Reminder**



Please bring in your OLRW PAC Cans for Change. The Cans returned last month brought in about \$66.

**Remember**  
Your Small Change can mean Big Change in Hawaii!



**Capitol View**

This is a place for our legislators to keep us informed on what they are doing at the capitol.

**The Party Line**  
by Pat Saiki  
Republican Party Chair

We are please to bring this column back this month with our current Chair Lynn Finnegan. (see page 4)



# The Party Line by Lynn Finnegan

Hawaii Republican Party Chair



Aloha Members of the Oahu League of Republican Women,

It's an exciting time and soon we will know our Republican nominees and their Democrat opponents heading into the general election. The people of Hawaii and America are counting on us to make positive change happen.

Our Democrat Governor unilaterally declared Hawaii in a state of emergency for a full two-year period while the legislature and judiciary did nothing to correct this major constitutional violation. The checks and balances of our three branches of government enshrined in our constitution failed in Hawaii because this one-party system colluded to put rule of party above rule of law.

Many local businesses closed, never to re-open. People lost their jobs and we continue to lose more Hawaii residents to the mainland than move in. Public school children were deprived of a quality education. Public sector union members were forced to choose between getting vaccinated or losing their jobs and careers, and even collective bargaining was sidelined. The Democrats felt so emboldened they borrowed a tactic from their mainland cohorts and pushed for sex and sexuality agenda "you can choose your gender" curriculum to elementary school students - a blatant disregard of parental rights. All this while being one of the highest taxed and the most business unfriendly states in the nation.

One the National level, the Democratic led government created the highest inflation we have seen in 40 years and continues to lead us down the road of economic disaster with round two of a Build, Back Better Act with the spun title of "Inflation Reduction Act." They disregard civil liberties and religious freedom. Their taxpayer-funded solutions to problems must stop.

We are the Party of reform and hope.

Be an active part of this movement and the Hawaii Republican Party's Stand For Hawaii victory campaign by:

- Volunteering
- Donating
- Putting up a sign or banner
- Sign waving
- Going door to door



We can make this happen for Hawaii and Hawaii's people. Help turn Hawaii from Blue to Red. God bless America, God bless Hawaii, and God bless you.

Lynn Finnegan State Chair  
Hawaii Republican Party

Visit  
[www.hawaiiRepublican.org](http://www.hawaiiRepublican.org)  
and  
[www.standforhawaii.org](http://www.standforhawaii.org)  
for more information.



Also, join us on KHVH AM830 on Saturday mornings at 9am for the HRP's Stand For Hawaii Radio Program with Rick Hamada.

# August Luncheon The Old Spaghetti Factory

Thank you to our candidates for sharing your ideas for making this a better state.



(L-R) Lauren Matumaoto (H38), Samantha DeCorte9S230 Lorene Godfrey(S15)  
Anna Misako Hudson(S17), Jamie Detweiler (H37), Mary Smart(S18)



Thanks to all who turned out to hear what our candidates had to say!

**THANK YOU** to  
Carolyn Kahakalii and  
Rita Kama-Kimura  
for the great pictures.





# OLRW Political Action Committee

## Get Involved

- Volunteer for a candidate.
- Donate money to a candidate.
- Participate in fundraising activities
- Talk to your friends and neighbors about what our Republican law makers are doing.
- Write a letter to the editor about a candidate or an issue.
- Donate \$5 per month to the OLRW PAC.



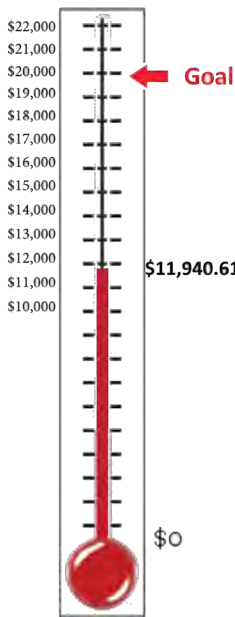
Mary Smart won the 50/50 drawing in May. Half of the pot went to Mary the other half goes to the OLRW PAC. Thank you to all who contributed.

**If each of our members did just this we could raise over \$20,000 in a two year election cycle.**

- Volunteer at the Hawaii Republican Party Headquarters.
- Encourage a Good Republican to run for office.

## Campaign 2022

Our PAC as of June 30 had \$11,940.61. Our Goal is to reach \$20,000.00. If you would like to help us support our candidates, please make a contribution at our luncheon, by filling out the form below and mailing it with your check to our headquarters or online at [www.OLRW PAC.com](http://www.OLRW PAC.com)



## September PAC Challenge

Fill out the form below and donate at least \$5.00 to the PAC this month.

We have to be willing to support our candidates with cash contributions as well as volunteering for their campaigns if we ever want to see change in Hawaii.

We are far short of our goal this election cycle. Please help if you can.

### PERSONAL Contributions Only Oahu League of Republican Women PAC

The following information helps us comply with campaign spending laws:

Individual Donor Name \_\_\_\_\_  
 Address \_\_\_\_\_ City \_\_\_\_\_ State \_\_\_\_\_ Zip \_\_\_\_\_  
 Home Phone \_\_\_\_\_ Business Phone \_\_\_\_\_ E-mail \_\_\_\_\_  
 Employer & Occupation information is required for anyone contributing more than \$100 since November 3, 2020  
 Employer \_\_\_\_\_ Occupation \_\_\_\_\_  Retired

### Political Action Committee or Company Contributions Only

Corporate Contributors - Do you have a contract with the State of Hawaii or any of its counties?  Yes  No

PAC or Company Name \_\_\_\_\_  
 Address \_\_\_\_\_ City \_\_\_\_\_ State \_\_\_\_\_ Zip \_\_\_\_\_  
 Business Phone \_\_\_\_\_ Fax \_\_\_\_\_ E-mail \_\_\_\_\_  
 Contact Name \_\_\_\_\_ Title \_\_\_\_\_

I am contributing

\$ 20.00  
 \$ 50.00  
 \$ 75.00  
 \$150.00  
 \$

I'm paying by  check Please make checks payable OLRW PAC  
 I'm paying by  cash We are required to give you a receipt for a cash contribution of \$100 or more.

Paid for by the Oahu League of Republican Women PAC • 725 Kapiolani Blvd • C105 • Honolulu HI 96813

**Kuhio22**





## Letters to the Editor

*You can't make a difference if you don't speak out*

### Republican candidates showed aloha in debate

Talking with friends, neighbors and ohana, I can say with confidence that Hawaii voters are worried about the future. On the political landscape, we are united in how divided we are. You can imagine how refreshing it was to witness the civility of the Republican gubernatorial candidates at last Thursday night's "Super Debate" ("BJ Penn's political stance comes into clearer focus," Star-Advertiser, July 22). The aloha on that stage with those competing Republican candidates was especially pronounced after spending an hour watching leading Democratic candidates sniping and flinging rude accusations for an hour.

The stark contrast is ironic, since it was about the failed policies of the Democrats, who have had a political stronghold on the islands since statehood. The lack of aloha they shared is reflected in the bloated budgets, rampant corruption and an economic future that almost guarantees our keiki won't be able to afford raising their families in Hawaii in the years to come.

Auwe! Vote for aloha.

**Shirlene Ostrov  
Ko Olina**

### Suspend state's GET for gasoline purchases

Yes, a suspension of federal and state gas taxes is warranted.

The Hawaii general excise tax (GET) is especially galling since it is a percentage of the price — 4.5% or 5%, depending on the county. It is paid in addition to federal and local fuel taxes. When gas prices go up, so does the tax.

The next Legislature must place a cap on the GET for gas when it hits a certain price. In other words, it remains a percentage until gas reaches, say, \$4 a gallon, at which point the GET is frozen at a fixed amount.

Barbara Marumoto  
Kahala

**We live in a time where intelligent people are being silenced so that stupid people won't be offended.**

### Letters

#### Star Advertiser

Email: [letters@staradvertiser.com](mailto:letters@staradvertiser.com)

Fax: 808-529-4750

Mail: Letters to the Editor,  
Honolulu Star Advertiser,  
7 Waterfront Plaza,  
500 Ala Moana, Suite 500,  
Honolulu HI 96813

**Give it a try. if you are not confident enough to send it to the Star Advertiser just send it to us.**

**Your thoughts matter on issues facing the state and the country.**

## Next Month's Luncheon

### October, 2022

### Speaker(s) to be announced.

**Minutes from the last meeting are available by email before our luncheons,**

**To get your copy contact  
Ellen Dihel  
[edihel@icloud.com](mailto:edihel@icloud.com)**



- **He told us to protect our borders**
- **He told us to bring manufacturing back home**
- **He told us to be less dependent on other countries**
- **He warned us about China**
- **Democrats fought him every step of the way!**



### 2022-24 OLRW Board of Directors

- |                 |                         |
|-----------------|-------------------------|
| Shirlene Ostrov | President               |
| Celyn Chong Kee | First Vice President    |
| Carol Thomas    | Second Vice President   |
| Ellen Dihel     | Recording Secretary     |
| Mary Monolon    | Treasurer               |
| Nancy Gallagher | Corresponding Secretary |
| Helen Kekuna    | Membership              |
| Ione Gumpfer    | Volunteer Coordinator   |
| Pam Smith       | Newsletter/Webmaster    |
| Allan Silva     | Sergeant at Arms        |

# Reading Suggestions

Links are also available on our website at [olrw.org](http://olrw.org)

Read about Constitution Day on the National Archives site

[https://www.archives.gov/news/topics/constitution-day?\\_ga=2.173592103.520058460.1631206409-1548872499.163059087](https://www.archives.gov/news/topics/constitution-day?_ga=2.173592103.520058460.1631206409-1548872499.163059087)



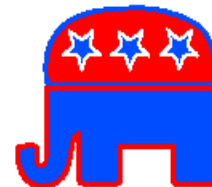
**The Grassroot Institute** has a great article making the case against solving Hawaii's problems with Emergency Actions.

<https://www.grassrootinstitute.org/2022/07/emergency-orders-our-newest-emergency/>

**The Tax Foundation of Hawaii** has an excellent article about the taxes are causing a health care Crisis in Hawaii.

<https://www.tfhawaii.org/wordpress/blog/2022/08/addressing-the-tax-crisis-in-health-care/>

Go to [www.OLRW.org](http://www.OLRW.org) for articles and links to reading recommendations



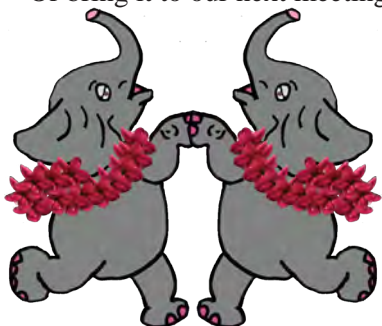
Oahu League of Republican Women

725 Kapiolani Blvd. C-105  
Honolulu HI 96813

Mail your check to:

Oahu League of  
Republican Women  
#C-105  
725 Kapiolani Blvd.  
Honolulu HI 96813

Or bring it to our next meeting



## Oahu League of Republican Women Membership Application

Date \_\_\_\_\_ Birthday Month \_\_\_\_\_ Day \_\_\_\_\_

Name \_\_\_\_\_

Address \_\_\_\_\_

City \_\_\_\_\_ Zip \_\_\_\_\_

Telephone \_\_\_\_\_ Fax \_\_\_\_\_

E-mail Address\* \_\_\_\_\_

Dues \$35.00 Yearly \$200.00 Lifetime

\* Your e-mail address will be added to our OLRW e-mail list for events and PAC requests.