



LEO Green Coating Compact Busway

Current: 250A-6300A Rated working voltage:690V Rated insulation voltage:1000V

Busway conductor tightly arranged, overall heat dissipation, slow temperature rising

Whole-length compact type (incl. outlet), light in weight, low impedance,
fast heat dissipation, high tapping capacity

Insulation dielectric strength of the coating with 3M powder up to 45V/ μm ,
insulation & heat-resistant grade from common B level (130°C) to H level (180°C)

Green coating insulation material, with higher strength and hardness,
and with stronger ability of aging resistance and the resistance to mechanical impact

The design of concave-convex groove at the edge of joint insulating plate increasing the creepage distance.

Superior performance of anti-corrosion, good for lower requirement of installation environment

Up to IP66



LV Series Compact Busway

Current: 250A-6300A Rated working voltage:690V Rated insulation voltage:1000V

'Sandwich-type' conductor, 'two-piece' housing, 'serrated surface' design of side-plate, helpful to heat dissipation, low voltage drop, and low heat loss

Whole-length compact type (incl. outlet),

helpful to low impedance, fast heat dissipation, high tapping capacity

High-speed sawing technology adopted to process the conductor, to keep the cutting edge smooth without burrs.

High cutting precision ensuring the smoothness of the cross section, reducing temperature rising of busway connector

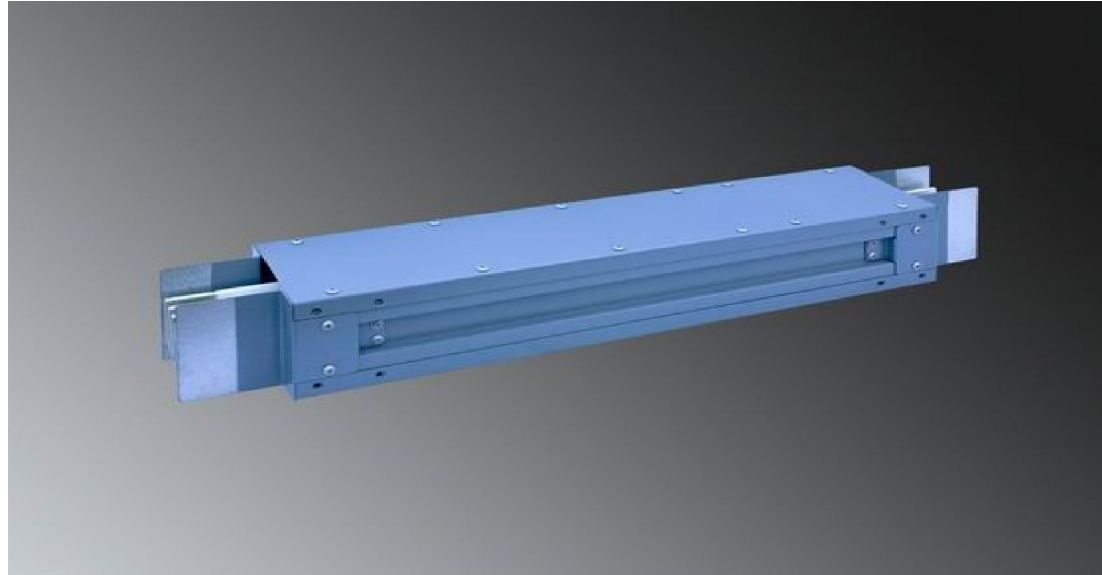
Double-headed torque bolt of intelligent connector ensuring the pressure required by connection, a special butterfly spring guaranteeing the lasting pressure between contact surfaces

Up to IP66



LM Series Compact Busway

- Rated current: 250A ~ 5000A
- Sandwich structure, no chimney effect
- Good heat dissipation, low impedance, low voltage drop
- Al-alloy enclosure of good grounding performance, 1000 hours salt spray test proved ability of anti-corrosion
- Special quick joint, no special tools required for installation
- Plugs with interlocking device, convenient installation to avoid the incorrect operation
- 6 national patents
- IP ratings: IP43, IP54, IP65, IP66



Wind Power Busway

- Suitable for wind power system of 750KW and above
- Rating voltage: 690V/1000V
Insulation voltage: 1000V/1500V
- Air insulation for more safety and reliability
- Specially-designed support effective in alleviating mechanical vibration and seismic wave
- Environment temperature: ± 50
- 10 minutes for installation
- Unique surface treatment provided for the busway to work over 40 years
- IP ratings: IP31~IP54



GFM Series Nonsegregated Phase Busduct

- Current: 1000A~6800A; Voltage: 3.15KV~35KV
- Enclosure made of aluminum sheet, AL-alloy sheet or weak magnetic sheet, easy to protect from getting heated due to weak eddy
- Good heat dissipation to avoid corona
- Shock absorber alleviating mechanical vibration and seismic wave
- Compartmentation device in wall to eliminate condensation problem due to temperature difference between inside and outside
- Online monitoring system to monitor the operation of busduct

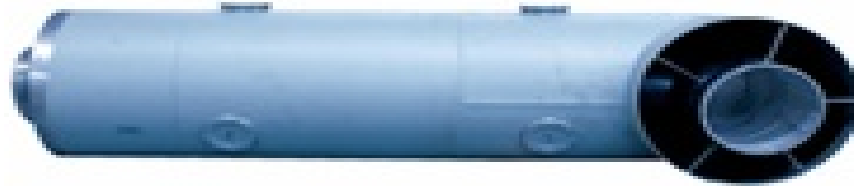


GGM Series Segregated Busduct

·Current: 1000A~4500A

Voltage: 3.15KV~10.5KV

· Individually separated 3-phase conductor, a smaller outer magnetic field than NPB, good insulation and no short circuit



QLFM Series Isolated Phase Busduct

- Current: 1000A~30000A; Voltage: 10.5kV~35kV
- Applied in 50MW or above electric distribution of lead-out wire return route and station branch circuit
- Disk insulator in interface, IP ratings up to IP54
- Slight positive pressure in busduct to remove dust and moisture
- Rubber bellows fixed on the enclosure in the interface to avoid the influence of circulation