



\$ FOREST GREEN



\$ HARTFORD GREEN



▲★\$ MILITARY BLUE



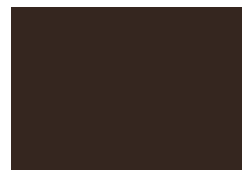
★\$ BERKSHIRE BLUE



▲★\$ SLATE BLUE



\$ AWARD BLUE



\$ AGED BRONZE



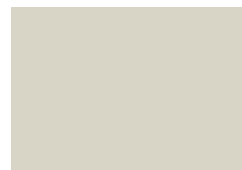
▲★\$ MEDIUM BRONZE



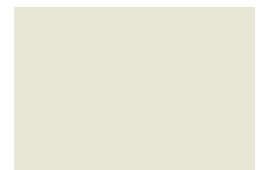
▲★\$ CARDINAL RED



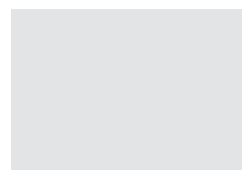
▲★\$ COLONIAL RED



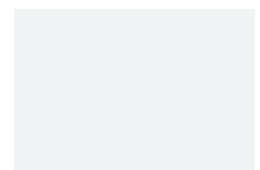
▲★\$ SANDSTONE



▲★\$ ALMOND



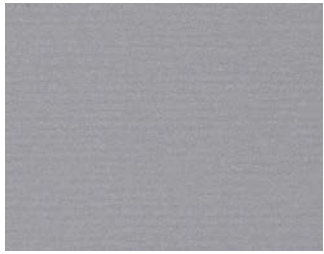
▲★\$ STONE WHITE



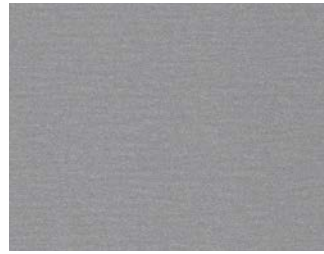
▲★\$ BONE WHITE

Color Guide

Premium Colors



●👑\$\$\$ ANODIC CLEAR



●👑\$\$\$ SILVERSMITH



●▲★👑\$\$\$ SILVER



●▲★👑\$\$\$ CHAMPAGNE



●▲★👑\$\$\$ ZINC



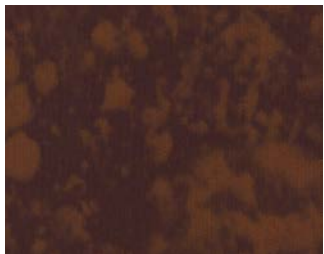
●▲★👑\$\$\$ WEATHERED ZINC



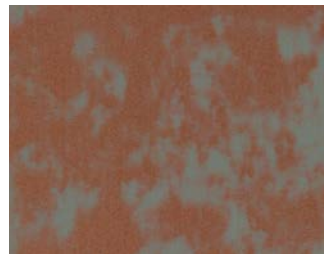
●▲★👑\$\$\$ COPPER PENNY



●▲★👑\$\$\$ AGED COPPER



👑\$\$\$ WEATHERED STEEL



👑\$\$\$ WEATHERED COPPER

Kynar 500® or Hylar 5000® pre-finished steel and aluminum for roofing, curtainwall and storefront applications.



- PAC-CLAD Metallic Colors
- ▲ PAC-CLAD Cool Colors
- ★ ENERGY STAR® Colors
- 👑 Premium Colors

See back for color availability chart.

Standard Colors



▲★\$ PATINA GREEN



▲★\$ TEAL



▲★\$ HEMLOCK GREEN



\$ FOREST GREEN



\$ HARTFORD GREEN



▲★\$ EVERGREEN



▲★\$ HUNTER GREEN



▲★\$ ARCADIA GREEN



▲★\$ MILITARY BLUE



★\$ BERKSHIRE BLUE



\$ GRAPHITE



▲★\$ CHARCOAL



\$ INTERSTATE BLUE



▲★\$ SLATE BLUE



\$ AWARD BLUE



\$ MATTE BLACK



▲★\$ DARK BRONZE



\$ BURNISHED SLATE



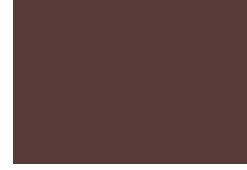
\$ AGED BRONZE



▲★\$ MEDIUM BRONZE



▲★\$ MANSARD BROWN



\$ BURGUNDY



▲★\$ TERRA COTTA



▲★\$ CARDINAL RED



▲★\$ COLONIAL RED



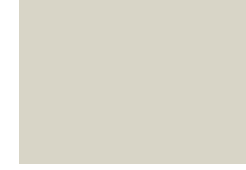
\$ MIDNIGHT BRONZE



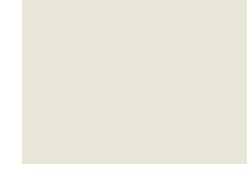
▲★\$ MUSKET GRAY



▲★\$ SIERRA TAN



▲★\$ SANDSTONE



▲★\$ ALMOND



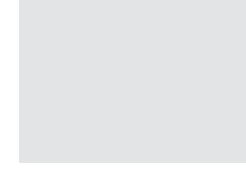
▲★\$ SLATE GRAY



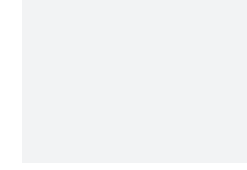
▲★\$ CITYSCAPE



▲★\$ GRANITE



▲★\$ STONE WHITE



▲★\$ BONE WHITE



PAC-CLAD
P E T E R S E N

PAC-CLAD.COM TX: 800 441 8661 MD: 800 344 1400
HQ: 800 PAC CLAD GA: 800 272 4482 MN: 877 571 2025

PAC-CLAD® Color Availability

PAC-CLAD STANDARD COLORS	REFLECTIVITY	EMISSION	3 YEAR EXPOSURE	SRI	STEEL		ALUMINUM				ENERGY STAR
					24 GA.	22 GA.	.032	.040	.050	.063	
AGED BRONZE	0.29	0.86		29	✓						
ALMOND	0.53	0.87	0.52	62	✓	✓	✓	✓	✓		★
ARCADIA GREEN	0.31	0.88	0.32	32	✓		✓				★
AWARD BLUE					✓		✓		✓		
BERKSHIRE BLUE*	0.26	0.87	0.25	25	✓						★
BONE WHITE	0.67	0.86	0.64	81	✓	✓	✓	✓	✓	✓	★
BURGUNDY					✓		✓		✓		
BURNISHED SLATE	0.32	0.86		33	✓						
CARDINAL RED	0.37	0.86	0.36	39	✓		✓		✓		★
CHARCOAL	0.27	0.87	0.27	27	✓		✓		✓		★
CITYSCAPE	0.44	0.86	0.43	49	✓	✓	✓	✓	✓		★
COLONIAL RED	0.32	0.88	0.32	34	✓		✓	✓	✓		★
DARK BRONZE	0.26	0.85	0.24	24	✓	✓	✓	✓	✓	✓	★
EVERGREEN	0.27	0.86	0.25	26	✓		✓				★
FOREST GREEN					✓	✓	✓	✓	✓		
GRANITE*	0.32	0.87	0.33	33	✓	✓	✓	✓	✓		★
GRAPHITE	0.29	0.86		29	✓						
HARTFORD GREEN	0.29	0.86	0.30	29	✓		✓	✓	✓		★
HEMLOCK GREEN	0.29	0.86	0.30	29	✓		✓		✓		★
HUNTER GREEN	0.27	0.86	0.26	26	✓		✓				★
INTERSTATE BLUE					✓		✓		✓		
MANSARD BROWN	0.29	0.86	0.27	29	✓	✓	✓	✓	✓		★
MATTE BLACK					✓		✓	✓	✓	✓	
MEDIUM BRONZE	0.26	0.88	0.25	26	✓	✓	✓	✓	✓	✓	★
MIDNIGHT BRONZE	0.06	0.88		0	✓			✓			
MILITARY BLUE	0.29	0.87	0.28	29	✓		✓				★
MUSKET GRAY	0.31	0.87	0.30	32	✓	✓	✓		✓		★
PATINA GREEN	0.33	0.86	0.32	34	✓		✓				★
SANDSTONE	0.49	0.87	0.49	56	✓	✓	✓	✓	✓	✓	★
SIERRA TAN	0.36	0.87	0.36	39	✓	✓	✓	✓	✓		★
SLATE BLUE	0.25	0.87	0.24	24	✓		✓				★
SLATE GRAY	0.37	0.88	0.36	40	✓	✓	✓	✓	✓		★
STONE WHITE	0.64	0.87	0.61	77	✓	✓	✓	✓	✓	✓	★
TEAL	0.26	0.87	0.26	25	✓		✓				★
TERRA COTTA	0.36	0.88	0.35	39	✓		✓		✓		★
PAC-CLAD PREMIUM COLORS											
AGED COPPER	0.26	0.87	0.25	25	✓		✓		✓		★
ANODIC CLEAR	0.54	0.81		61				✓			
CHAMPAGNE	0.40	0.82	0.36	42	✓		✓	✓	✓		★
COPPER PENNY	0.47	0.87	0.44	53	✓		✓	✓	✓		★
SILVER	0.49	0.81	0.46	54	✓	✓	✓	✓	✓		★
SILVERSMITH	0.53	0.81		60				✓			
WEATHERED COPPER					✓						
WEATHERED STEEL					✓						
WEATHERED ZINC	0.26	0.82	0.23	23	✓	✓	✓		✓		★
ZINC	0.33	0.88	0.32	35	✓		✓	✓	✓		★
CLEAR-COAT ACRYLIC FINISH (NON-KYNAR)											
GALVALUME PLUS	0.68	0.14	0.55	57	✓	✓					★

PAC-CLAD Metallic finishes are available from stock at a moderate extra cost. PAC-CLAD Copper Penny is a Non-Weathering finish. Solar Reflectance Index calculated according to ASTM E-1980.

*Low Gloss/Low Sheen, full 70% PVDF finish

ENERGY STAR PERFORMANCE CRITERIA:

Emissivity uses ASTM C1371 Reflectivity uses ASTM C1549.

TECHNICAL DATA FOR KYNAR 500/HYLAR 5000 COATING:

- ▶ South Florida Exposure: Color (ASTM D 2244) - No more than 5ΔE Hunter units at 20 years; Chalk (ASTM D 4214) - Rating no less than 8 at 20 years; Film integrity - 20 years.
- ▶ Accelerated Weathering (ASTM D 4587, ASTM G 154): 5000 Hours, QUV-A, 340 NM Bulb - Chalk, per ASTM D 4214, rating of 6 or better; Color, per ASTM D 2244, < 5ΔE (Hunter Units) color change.

- ▶ Humidity Resistance (ASTM D 2247): Galvalume or HDG, 100% RH, 2000 hours - No field blisters; Aluminum, 100% RH, 3000 hours - No field blisters
- ▶ Salt Spray Resistance (ASTM B 117): Aluminum, 3000 hours, Galvalume or HDG, 1000 hours - Creep from scribe no more than 1/16", no field blisters
- ▶ Chemical/Acid Pollution Resistance (ASTM D 1308): Pass
- ▶ T-Bend (ASTM D 4145): 1T - 3T with no loss of adhesion
- ▶ Pencil hardness (ASTM D 3363): HB - 2B
- ▶ Specular Gloss (ASTM D 523) @ 60 degrees: Typical - 20 - 35

- ▶ Abrasion Resistance (ASTM D 968): 80 +/- 10 liters
- ▶ Cross Hatch Adhesion (ASTM D 3359): No loss of adhesion
- ▶ Reverse Impact (ASTM D 2794): Galvalume or HDG, 2x metal thickness inch-pounds, no loss of adhesion; Aluminum, 1.5x metal thickness inch-pounds, no loss of adhesion
- ▶ Flame Test (ASTM E 84): Class A Coating
- ▶ Water Immersion (ASTM D 870): 500 hours, 100 degrees, no loss of adhesion