



**ABACUS**



2012 Quality of Life Bond  
BUILDING TOMORROW  
*Together*

# Alameda Community Center



**City of El Paso**

**Alameda Community Recreation Center / Library**

**Community Meeting**

May 25, 2017



**ABACUS**



**Alameda Community Center**

## **General Announcements**

- **Assistive needs**
- **Sign-in Sheet**
- **Handouts**



**ABACUS**



**Alameda Community Center**

## **Introductions**

- **City of El Paso Staff**
  - **Capital Improvement**
  - **Libraries**
  - **Parks & Recreation**
  - **Museum & Cultural Affairs**
- **Abacus – Project Manager**
- **Exigo / Marmon Mok – Design Consultants**
- **Artist – Contract Pending**



**ABACUS**



**Alameda Community Center**

## **Project Structure**

- **City of El Paso**
  - **Parks & Recreation Department**
  - **Libraries Department**
  - **Capital Improvements Department**
    - **Abacus – Project Manager**
      - **Exigo/Marmon Mok – Design Team**
      - **CMAR – TBD**
  - **Museum & Cultural Affairs**
    - **Artist**



**ABACUS**



**Alameda Community Center**

## **Meeting Purpose**

- Create a dialog with the community to present project constraints and opportunities as well as receive input from community on project priorities and neighborhood identity.



**ABACUS**



**Alameda Community Center**

## **Ground Rules**

- **Be Respectful**
- **Allow everyone a chance to speak and finish their sentence before responding**
- **Allow translation to occur without interrupting**
- **Pay attention and offer your input – It's Critical!**





**ABACUS**



**Alameda Community Center**

## **Completed Tasks and Schedule**

- Program Management Services approved 8/9/2016
- AE Professional Services approved 3/21/2017
- CMAR Services approval – Estimated July/Aug 2017
- Schedule:
  - Pre-Design and Design 2017
  - Construction 2018
  - Commissioning and Occupancy 2019



**ABACUS**



**Alameda Community Center**

## **General Project Program**

- **Green Globes II or LEED Silver – Minimum**
- **Public Art**
- **Gymnasium**
- **Library Space**
- **Dining / Multipurpose Space**
- **Classrooms / Technology Lab**
- **Fitness / Cardio / Running Track**
- **Restrooms / Locker Rooms**
- **Outdoor Play Area**
- **Game Room**
- **Admin / Building Support / IT Equipment and Spaces**
- **Custodial Equipment and Spaces**
- **Non-Commercial Kitchen**





**ABACUS**



**Alameda Community Center**

## General Project Budget

- **Project Cost vs. Construction Cost**

- **Total Budget Allocation**

- ✓ Land Acquisition
      - ✓ Professional Services / Survey / Soils Testing
      - ✓ Fixtures, Furnishing & Equipment
      - ✓ Utility Charges – Design & Construction
      - ✓ Public Art
      - ✓ Other Costs
      - ✓ Contingency
      - ✓ Construction Cost
- \$11 Million**



# ABACUS



## Alameda Community Center

### Project Site/Location

- 7380 Alameda (TX Highway)
- 4.5 Acres
- Zoned C- 4
- Not in Flood Plain
- Currently Undeveloped, Former Mobile Homes Dealership
- BRIO Stop at Carolina





**ABACUS**



**Alameda Community Center**

## **Architects**

- **Site Analysis**
- **Planned Activities**
- **Site and Building Program**
- **Preliminary Concepts**
- **Master Plan**



**ALAMEDA RECREATION CENTER**  
CITY OF EL PASO, TEXAS

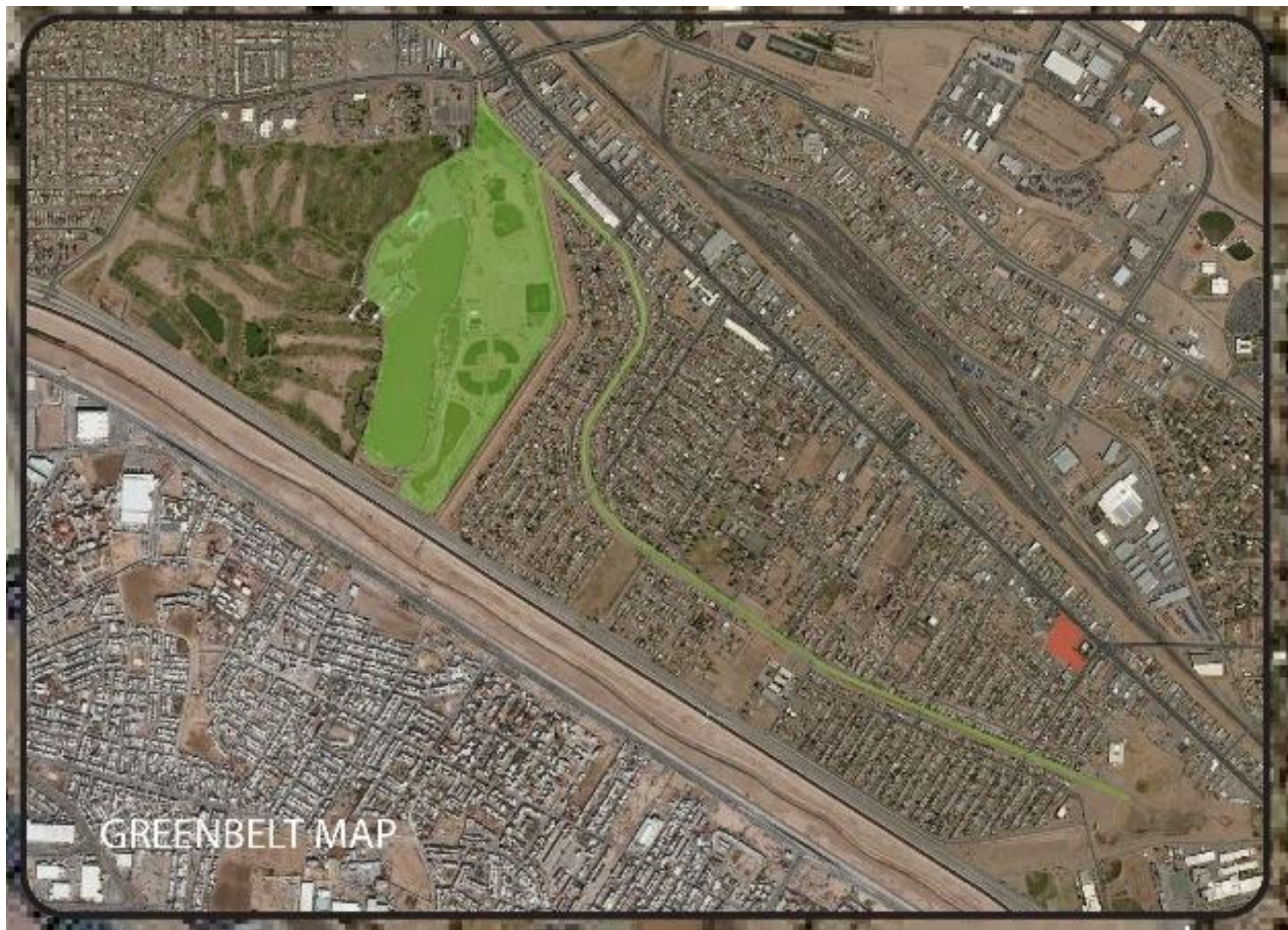


**MarmonMok**  
ARCHITECTURE

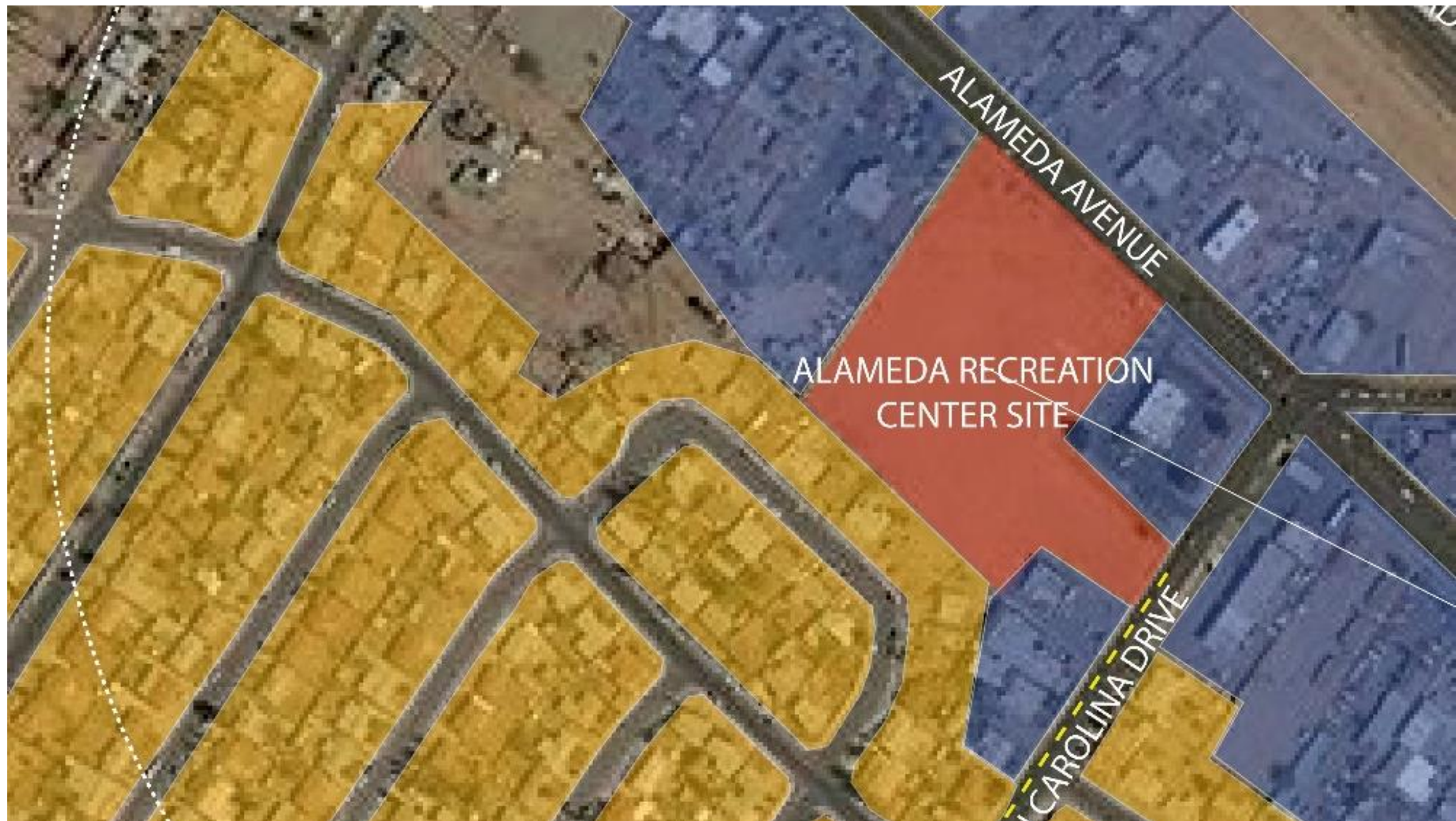








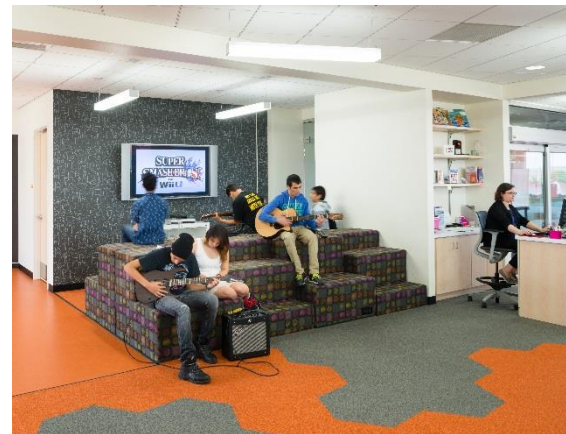














# RECREATION





# COMMUNITY





# SPORTS







# LIBRARY







# LANDSCAPE













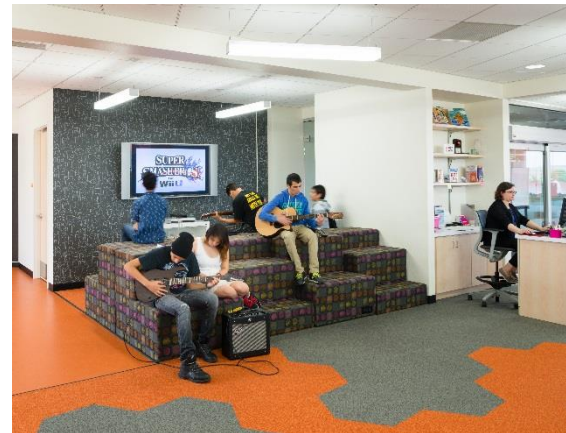
**SITE AREA:** 4.5 acres

**BUILDING AREA:** 27,000sf

- ENTRANCE CONTROL
- COMMUNITY SPACES
- FITNESS (CARDIO & WEIGHT ROOM)
- GYMNASIUM
- SUPPORT SPACES
- LIBRARY

**PARKING SPACES:** 63 + 4 Accessible Spaces











**ABACUS**



**Alameda Community Center**

## **Community Art Opportunity**

- **Contract Pending**
- **Community Input**
- **Opportunity to incorporate:**
  - **Artistic shade elements**
  - **Emphasize light and shadow patterns**
  - **Tell a story using text and imagery**



# ABACUS



## Alameda Community Center

## Conclusions

- Review Ideas
- Review Concepts
- Review Project Goal



**ABACUS**



**Alameda Community Center**

## **Next Steps**

- **Develop Concept Design**
- **Follow-up Community Meeting – June / July**
- **Final Questions?**
- **Fill out and turn in Meeting Evaluation Forms**
- **Staff and Consultants will be available for one-on-one questions and/or comments at the conclusion of the meeting**
- **CID Website – Link to Project Website**