

# RIVIERA PORT LINCOLN TUNA CLASSIC

2019 EVENT DATES:

Friday 22<sup>nd</sup> March – Sunday 24<sup>th</sup> March

## COMPETITION RULES



*Thank you to Riviera Corporation and R Marine SA for their support as our naming right sponsor*



**SHIMANO**<sup>®</sup>



*Our event is proudly supported by Riviera, The Line & Label, Shimano and Club Marine. We thank them for their ongoing support and encourage you to use their services.*



**RIVIERA PORT LINCON TUNA CLASSIC COMMITTEE:**

The Tournament committee consists of Russell Bianco & Gabriella Gabbana. Referee and IGFA representative of SA is Rolf Czabyski.

**TEAMS:**

Each team shall consist of a maximum of four anglers, who may interchange with the Skipper and Deckhand.

**FISHING DAYS:**

Day one of the competition – Saturday 23<sup>nd</sup> March from 9am to 6pm

Day two of the competition – Sunday 24<sup>th</sup> March from 8am to 3pm

**VENUES:**

<b>Friday 22<sup>nd</sup> March</b>	6.00pm Compulsory Briefing Night, The Marina Hotel
<b>Saturday 23<sup>rd</sup> March</b>	8.00am Compulsory Shotgun start, The Entrance of the Lincoln Cove Marina
<b>Sunday 24<sup>th</sup> March</b>	6.00pm Presentation dinner, The Line & Label, 31 Whillas Road

**SPECIES:**

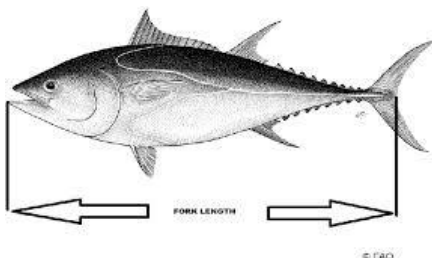
The Riviera Port Lincoln Tuna Classic is a catch and release event for Southern Bluefin Tuna only.

**LINE CLASSES:**

10KG only. Fish must equal line class – 10kg or 780mm

**MEASURING TUNA:**

The minimal length of a Tournament point scoring fish is 780mm. All competitors will be supplied with a measuring rod as well as a measuring tape. Please ensure the fish is measured from the fork of the tail to the end of the lower lip. If using the tape measure, the tape measure must be on a flat straight surface not over the body of the fish.



**BAIT RULES:**

No live bait, chumming or burley is allowed.

**HEAVIEST FISH:**

A printed scale of Length to Weight will be supplied in each competitor bag. Please call heaviest fish through radio channel once caught and supply fork length as illustrated above. Any boat that calls in a large fish, and later reduces the size of that fish will be disqualified from the tournament.



#### WEIGH STATION:

All fish kept for heaviest fish, must be kept on ice and weighed on the pontoon of 13 Island Drive (Peter Teakles house) prior to 5pm on Sunday 24<sup>th</sup> March. Captured and weighed fish do not record a point score.

#### RADIO SCHEDULES:

The radio channel for the Riviera Port Lincoln Tuna Classic is Radio Channel VHF 81.

Start fishing will be called at 9am on Saturday 23<sup>rd</sup> March and 8am on Sunday 24<sup>th</sup> March, with two scheduled radio calls each day as follows:

Saturday 23<sup>rd</sup> March – 12.10pm and 6.30pm

Sunday 24<sup>th</sup> March – 12.10pm and 3.10pm

It is the skippers responsibility to be aware of these times. Failure to reply to a radio call may result in points being deducted.

To ensure we record all 'catch and release' stats for the competition all boats are required to clearly state the following at each radio schedule -

#### DAY ONE ONLY

- Boat name
- Position
- Total number of points
- Highest point scoring angler

#### DAY TWO

- Boat name
- Position

**Total number of points and highest point scoring angler of day two is to be communicated via text or phone before 4.00pm to 0412823801.**

We request that boat points are to remain confidential so the winner can be announced on presentation night.

Weather reports and vessel Log-in is with VMR Tumbly Bay on VHF 81 at 07.45am and 5.15pm daily.

#### TACKLE RULES:

If a leader is used, it must meet the following specifications:

- The length of the leader is the overall length, including any lure, hook arrangement or other device
- The leader must be connected to the line with a snap, knot, swivel or other device
- There are no regulations regarding the material or the strength of the leader
- The leader shall be limited to 4.57m
- The combined length of the double line and leader shall not exceed 6.1m



**PROTESTS:**

Any protest must be made in writing and handed to the Tournament Committee by 5pm on Sunday 24<sup>th</sup> March before the official presentation dinner.

**TIE:**

In the event of a competition tie, the prizes and title will be shared.

**FUEL:**

Diesel fuel will be available at the service wharf in the Marina and must be arranged by the competitor. ULP will be available on Saturday after competition ends for the day, at the Mother Ship in Memory Cove.

**TROPHIES:**

Competition winners and runners up will be presented with trophies on Sunday 24<sup>th</sup> March at the Presentation Dinner at The Line & Label, 31 Whillas Rd, 6pm. Please ensure you book and pay for your table early as seats are limited.

**T-SHIRT ORDERS:**

Each year we produce a Riviera Port Lincoln Tuna Classic t-shirt and we ask you complete the order form as soon as you can, so we can have correct sizing available as per your request. We request that all crew purchase the t-shirt and wear this at the presentation dinner.

**SOCIAL FUNCTIONS:**

The Marina Hotel will host our compulsory briefing night and Calcutta on Friday 22<sup>nd</sup> March at 6pm. The presentation dinner will be held at the Line & Label, 31 Whillas Rd with fishing teams, friends and family welcome to purchase tickets.



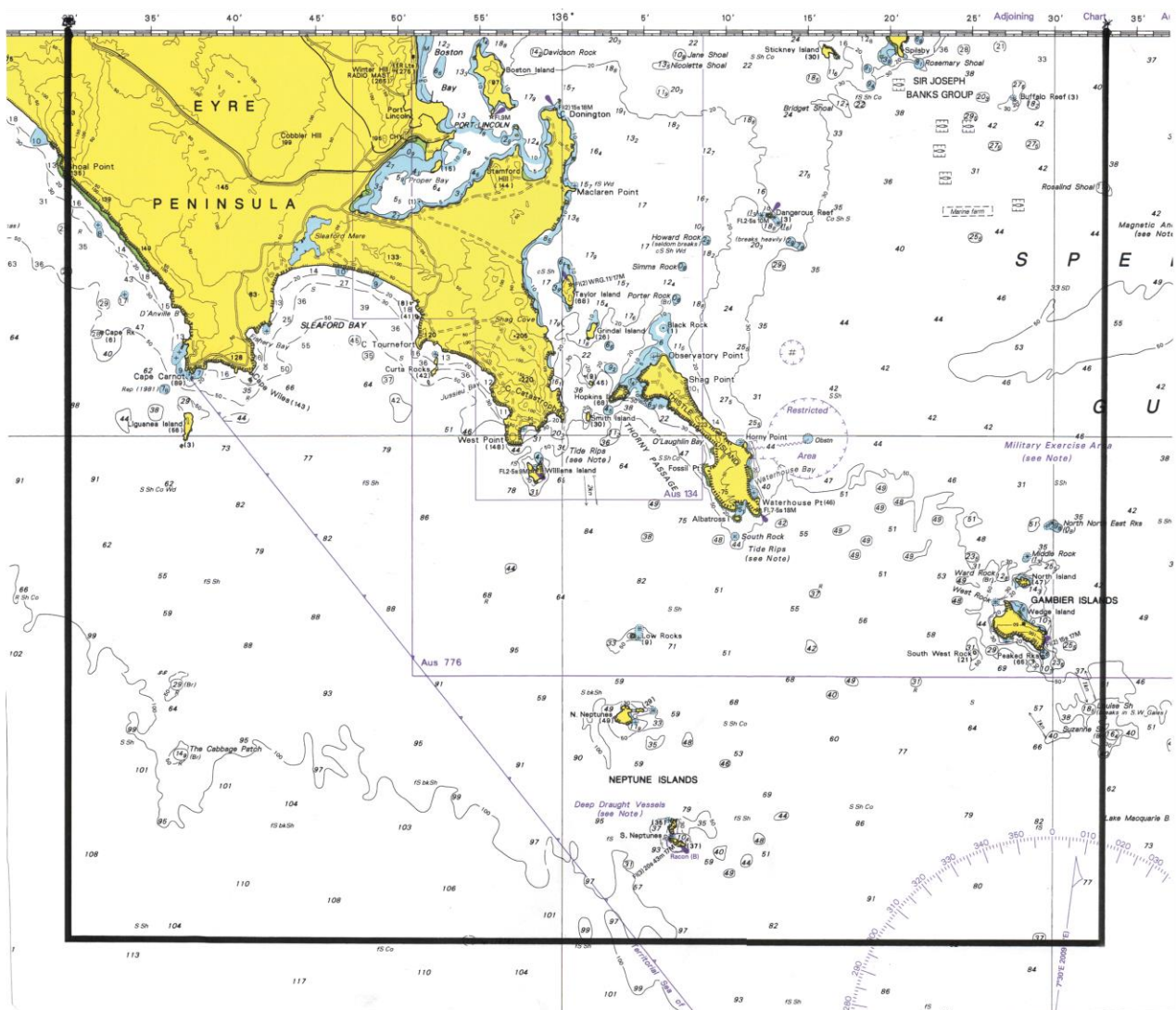
## RIVIERA PORT LINCOLN TUNA CLASSIC

### BOUNDARIES:

Fishing boundaries have been established to maintain a level, affordable playing field. Maps and GPS coordinates relating to boundaries are highlighted and it is competitors' responsibility to familiarize themselves with these.

Competition fishing may take place only during the specified fishing times and in the following areas bounded by:

West 135°30.000E    South 35°25.000S    East 136°33.000E    There is no Northern boundary



*Please note that there are Sanctuary zones within the boundaries. Please refer to the maps and Sanctuary Zone information supplied.*

Competition rules are subject to change. Any changes will be communicated at the compulsory Briefing night and new rules will be distributed.