

Darn That Dream

Ballad

James Van Heusen

Arr. K. Hewitt

F⁶/₉ B^{b6}/₉ E^{b6}/₉ A^{b13} G^{maj9} G/B B^{m11} E^{b7}

4 Am⁷ B^{7(b5)} D^{#o7} Em⁷ A/C[#] Cm(maj7) B^{m7(b5)} E^{7(#9)} E^{7(b9)}



1.

7 Am⁹ Cm⁷ F⁷ B^{m9} B^{b o7} Am¹¹ D^{9/C}

2.

10 B^{m7} B^{b maj7} E^{b13} A^{b13} B^{m7} B^{b m7} Am¹¹ D^{13(b9)}

13 $G^{\circ}9$ $Bb^9(sus4)$ $Bb^7(b9)$ $Ebmaj7$ Cm^{11} $B^{\circ}7$ Cm^7 Fm^9 $Bb^7(\#5)$

16 Gm^7 $F\#m^7$ B^7 Fm^{11} B^7 $Bb^9(sus4)$ E^7 $Ebmaj7$ B° Cm^{11}

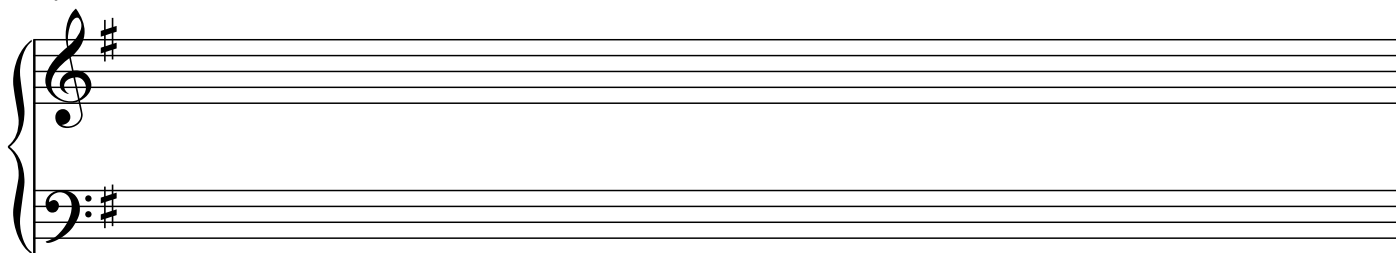
D.S. al Coda

19 Gm Gm^+ Gm^6 Gm^7 Am $Am(maj7)$ $D^9(\#11)$ D^7 Bbm^7 Eb^7 Am^7 $D^7(b9)$

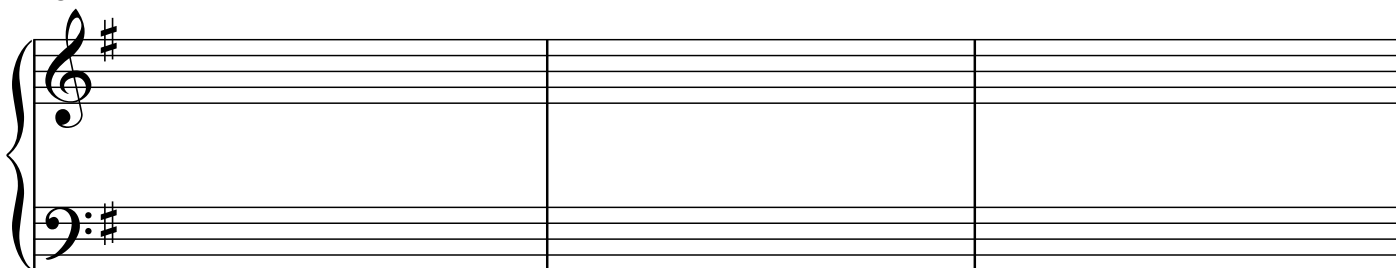
♩ Rit.....

22 Bm^7 Bbm^7 Am^{11} $D^{13}(b9)$ $F^{\circ}9$ $Bb^{\circ}9$ $Eb^{\circ}9$ Ab^{13}

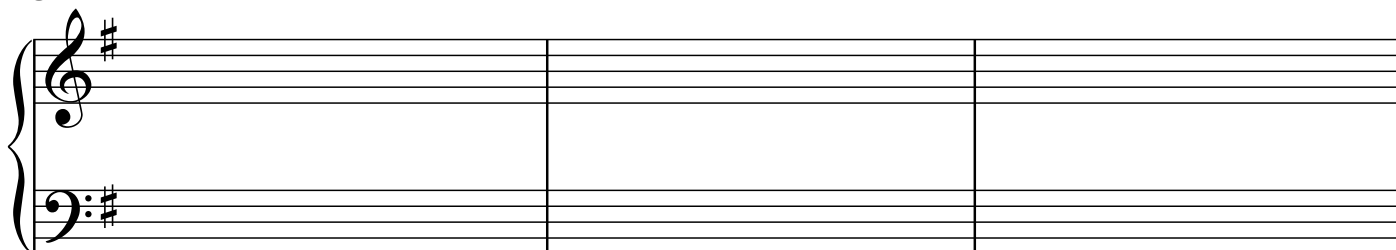
27



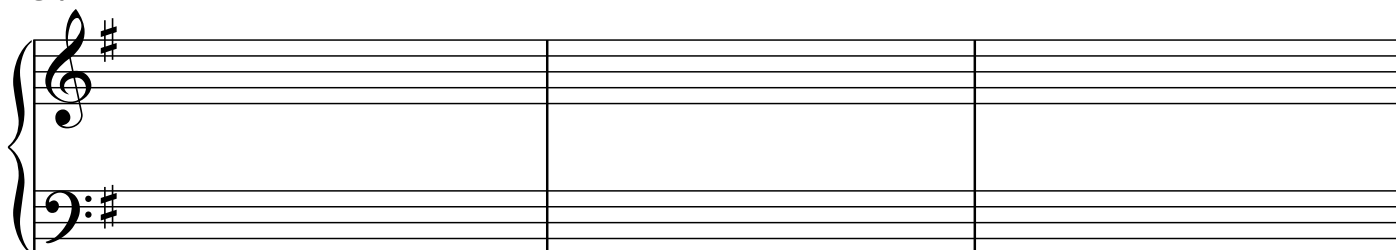
28



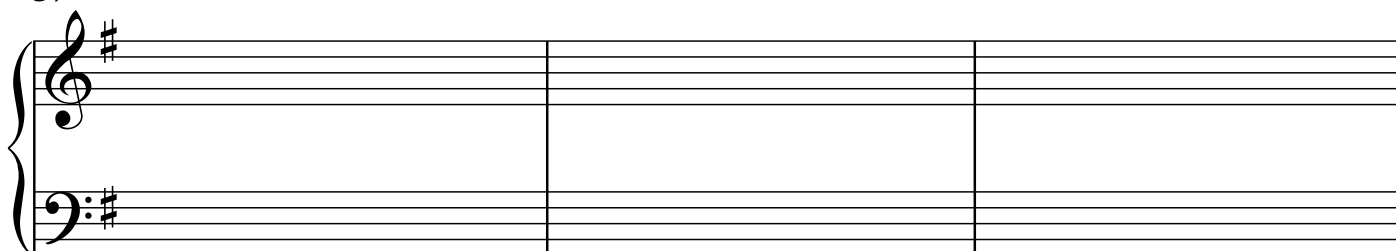
31



34



37



4 40

A musical staff system consisting of two staves: a treble clef staff and a bass clef staff. Both staves have a key signature of one sharp (F#) and a 4/4 time signature. The staff is empty.

46

A musical staff system consisting of two staves: a treble clef staff and a bass clef staff. Both staves have a key signature of one sharp (F#). The staff is empty.

49

A musical staff system consisting of two staves: a treble clef staff and a bass clef staff. Both staves have a key signature of one sharp (F#). The staff is empty.

52

A musical staff system consisting of two staves: a treble clef staff and a bass clef staff. Both staves have a key signature of one sharp (F#). The staff is empty.

55

A musical staff system consisting of two staves: a treble clef staff and a bass clef staff. Both staves have a key signature of one sharp (F#). The staff is empty.

58

A musical staff system consisting of two staves, treble and bass clef, with a sharp sign indicating the key signature. The system is divided into three measures by vertical bar lines. The staves are currently empty.

61

A musical staff system consisting of two staves, treble and bass clef, with a sharp sign indicating the key signature. The system is divided into two measures by a vertical bar line. The staves are currently empty. The second measure ends with a double bar line.