

THE BEST NAME  
IN ORNAMENTAL  
HARDWARE



DEM & CUSTOM HARDWARE MANUFACTURING · SUPERIOR ENGINEERED PRODUCTS



ORNAMENTAL FENCE / MECHANICAL  
HANDRAIL CATALOG

Quality Products · Dependable Service · **Lifetime Warranty** · Competitive Pricing · Custom Designs



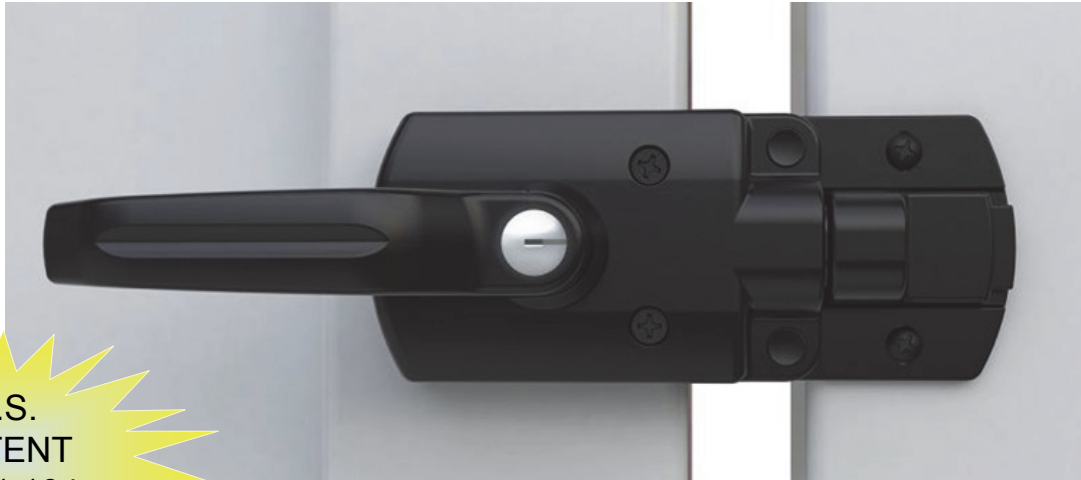
**WELDON**  
INDUSTRIES

WE HAVE YOUR PARTS.™

Office 813.248.9800  
Fax 813.248.9900

[www.weldon-industries.com](http://www.weldon-industries.com)

## INTRODUCING THE DUALMAG™. OUR NEWEST ADDITION TO THE WELDON FAMILY OF PARTS. THE DUAL MAGNETIC GATE LATCH.



U.S. PATENT D701,104

U.S.  
PATENT  
D701,104



**Sleek and Stylish Design**  
**Heavy Duty Solid Glass Filled Nylon**  
**Can Be Used as a Right or Left Handed Latch**  
**Without Making Any Modifications**

**Quick and Easy Installation**  
**Adjustable Qualities Allows for Installation on**  
**Vinyl, Steel, Wood or Aluminum Gates**  
**Fits Gate Frames from 1 ½" to 5"**

**NEW!!!**



U.S. PATENT D701,104

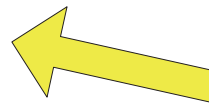
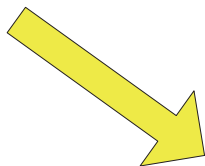
**Crushes Competitions Pricing**  
**Locks and Unlocks From Front or Back of Gate**  
**Horizontal Adjustability**

**NEW!** Panic Bar

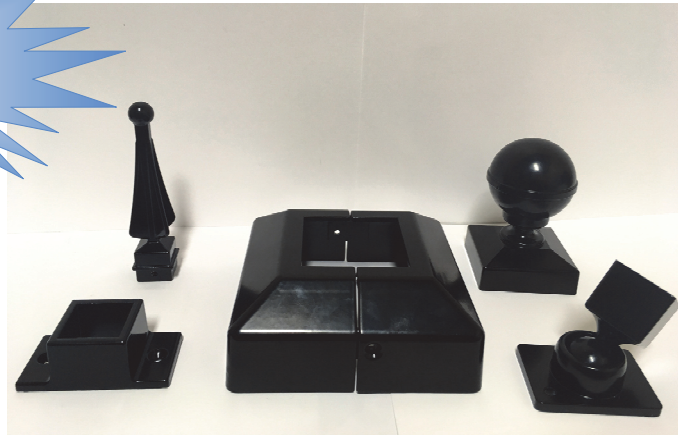
**Stainless Steel Panic Bar**

**Allows for two sided entry**

**Certified to be used on pool gates**







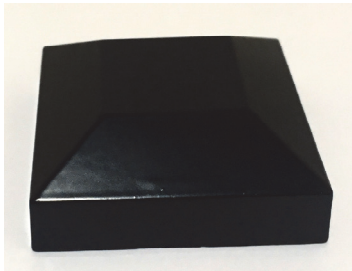
**WI-50302-BK**  
**5/8" Quad Finial**



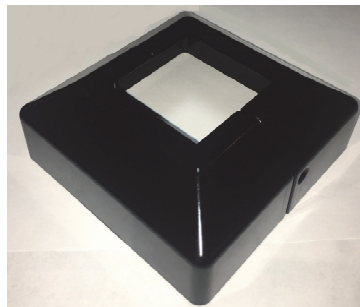
**WI-6192-BK**  
**Swivel Bracket**



**WI-6166-BK**  
**2"x2" Die Cast  
Aluminum Ball  
Cap**



**WI-RPC-2NL-BK**  
**2" Aluminum Post  
Cap**



**WI-2PCS-PB-2X2B**  
**2 Piece Base Cover**



**WI-280-BK**  
**1" Fixed Bracket**

\*Not All Products are Stock Items.  
Call to Check On Hand Inventory.

\*Case Qty's/Weights May Change

### HR-1 Wall Mount



| Part Number                      | Description             |
|----------------------------------|-------------------------|
| WI-HR-1DC-M                      | HR 1 Wall Mount, Mill   |
| WI-HR-1DC-BZ                     | HR 1 Wall Mount, Bronze |
| WI-HR-1DC-WH                     | HR 1 Wall Mount, White  |
| Case Qty/Weight: 200Pcs @ 40Lbs* |                         |

### HR-10 Wall Mount



| Part Number                      | Description              |
|----------------------------------|--------------------------|
| WI-HR-10DC-M                     | HR 10 Wall Mount, Mill   |
| WI-HR-10DC-BZ                    | HR 10 Wall Mount, Bronze |
| WI-HR-10DC-WH                    | HR 10 Wall Mount, White  |
| Case Qty/Weight: 192Pcs @ 44Lbs* |                          |

### HR-12 Wall Mount



| Part Number                      | Description              |
|----------------------------------|--------------------------|
| WI-HR-12DC-M                     | HR 12 Wall Mount, Mill   |
| WI-HR-12DC-BZ                    | HR 12 Wall Mount, Bronze |
| WI-HR-12DC-WH                    | HR 12 Wall Mount, White  |
| Case Qty/Weight: 420Pcs @ 38Lbs* |                          |

### HR-14 Wall Mount



| Part Number                      | Description              |
|----------------------------------|--------------------------|
| WI-HR-14DC-M                     | HR 14 Wall Mount, Mill   |
| WI-HR-14DC-BZ                    | HR 14 Wall Mount, Bronze |
| WI-HR-14DC-WH                    | HR 14 Wall Mount, White  |
| Case Qty/Weight: 250Pcs @ 42Lbs* |                          |

### 1" x 2" Wall Mount (One Ear)



| Part Number                        | Description                |
|------------------------------------|----------------------------|
| WI-SMB-Z/P                         | 1" x 2" Wall Mount, Mill   |
| WI-SMB-36                          | 1" x 2" Wall Mount, Bronze |
| WI-SMB-26                          | 1" x 2" Wall Mount, Black  |
| WI-SMB-56                          | 1" x 2" Wall Mount, White  |
| Case Qty/Weight: 200 Pcs @ 42 Lbs* |                            |

### Flat Wall Mount Brackets



| Part Number                     | Description                         |
|---------------------------------|-------------------------------------|
| WI-SL1 1/2 X1                   | 1 1/2" X 1" Flat Wall Mount Bracket |
| Case Qty/Weight: 42 Pcs @ 30Lbs |                                     |

### Flat Wall Mount Brackets



| Part Number                        | Description                     |
|------------------------------------|---------------------------------|
| WI-SL 1X2                          | 1" X 2" Flat Wall Mount Bracket |
| Case Qty/Weight: 168 Pcs @ 30 Lbs* |                                 |

### Flat Wall Mount Brackets



| Part Number                        | Description                     |
|------------------------------------|---------------------------------|
| WI-SL 2X1B                         | 2" X 1" Flat Wall Mount Bracket |
| Case Qty/Weight: 216 Pcs @ 41 Lbs* |                                 |

### Flat Wall Mount Brackets



| Part Number                        | Description             |
|------------------------------------|-------------------------|
| WI-SL68                            | Flat Wall Mount Bracket |
| Case Qty/Weight: 300 Pcs @ 45 Lbs* |                         |



### Flat Wall Mount Brackets

| Part Number                        | Description                     |
|------------------------------------|---------------------------------|
| WI-SL2X1S                          | 2" X 1" Flat Wall Mount Bracket |
| Case Qty/Weight: 200 Pcs @ 32 Lbs* |                                 |

### Round Top Wall Mount Bracket



| Part Number                        | Description                    |
|------------------------------------|--------------------------------|
| WI-RTC-Z/P                         | Round Top Wall Bracket         |
| WI-RTC-36                          | Bronze Round Top Mount Bracket |
| WI-RTC-26                          | Black Round Top Mount Bracket  |
| WI-RTC-56                          | White Round Top Mount Bracket  |
| Case Qty/Weight: 210 Pcs @ 43 Lbs* |                                |

### Round Top Wall Mount Bracket



| Part Number                        | Description                          |
|------------------------------------|--------------------------------------|
| WI-SL1X2M                          | 1" X 2" Round Top Wall Mount Bracket |
| Case Qty/Weight: 250 Pcs @ 48 Lbs* |                                      |

### Mushroom Wall Mount Brackets



| Part Number                        | Description                                  |
|------------------------------------|--|
| WI-SL-2X2M                         | 2" X 2" Mushroom Wall Mount Bracket          |
| WI-SL271M                          | 2-5/16" X 2-3/4" Mushroom Wall Mount Bracket |
| Case Qty/Weight: 125 Pcs @ 50 Lbs* |  |

### Wall Mount Bracket



| Part Number                        | Description        |
|------------------------------------|--------------------|
| WI-DSL2 5/8                        | Wall Mount Bracket |
| Case Qty/Weight: 200 Pcs @ 42 Lbs* |                    |

### Knuckles



| Part Number                                       | Description              |
|---|--------------------------|
| WI-KNUCKLE-1/2                                    | 1/2" Mill Finish Knuckle |
| WI-KNUCKLE-3/4                                    | 3/4" Mill Finish Knuckle |
| Case Qty/Wgt: 200 Pcs @ 33 Lbs; 200 Pcs @ 46 Lbs* |                          |

### HR-1 End Cap



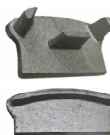
| Part Number                     | Description          |
|---------------------------------|----------------------|
| WI-HRC-1DC-M                    | HR 1 End Cap, Mill   |
| WI-HRC-1DC-BZ                   | HR 1 End Cap, Bronze |
| WI-HRC-1DC-WH                   | HR 1 End Cap, White  |
| Case Qty/Weight: 200Pcs @ 42Lbs |                      |

### HR-10 End Cap



| Part Number                        | Description           |
|------------------------------------|-----------------------|
| WI-HR10E                           | HR 10 End Cap, Mill   |
| WI-HR10E-BZ                        | HR 10 End Cap, Bronze |
| WI-HR10E-WH                        | HR 10 End Cap, White  |
| Case Qty/Weight: 600 Pcs @ 40 Lbs* |                       |

### End Cap



| Part Number                        | Description |
|------------------------------------|-------------|
| WI-SL271E                          | End Cap     |
| WI-SL271ES                         | End Cap     |
| Case Qty/Weight: 500 Pcs @ 40 Lbs* |             |

### HR-4 Flange Base



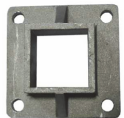
| Part Number                   | Description                               |
|-------------------------------|---|
| WI-HR-4DC-M                   | 2"x2" Base (5" Flange Tip to Tip), Mill   |
| WI-HR-4DC-BZ                  | 2"x2" Base (5" Flange Tip to Tip), Bronze |
| WI-HR-4DC-BK                  | 2"x2" Base (5" Flange Tip to Tip), Black  |
| WI-HR-4DC-WH                  | 2"x2" Base (5" Flange Tip to Tip), White  |
| Case Qty/Wgt: 48 Pcs @ 40 Lbs |   |

### HR-4A Flange Base



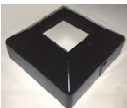
| Part Number | Description                      |
|-------------|----------------------------------|
| WI-HR-4A-M  | 1.4" X 1.8" Flanged Base, Mill   |
| WI-HR-4A-BZ | 1.4" X 1.8" Flanged Base, Bronze |
| WI-HR-4A-BK | 1.4" X 1.8" Flanged Base, Black  |
| WI-HR-4A-WH | 1.4" X 1.8" Flanged Base, White  |

### 2" Base (4" Flange Tip to Tip)



| Part Number                   | Description                               |
|-------------------------------|---|
| WI-2X2B                       | 2"x2" Base (4" Flange Tip to Tip), Mill   |
| WI-2X2B-BZ                    | 2"x2" Base (4" Flange Tip to Tip), Bronze |
| WI-2X2B-BK                    | 2"x2" Base (4" Flange Tip to Tip), Black  |
| WI-2X2B-WH                    | 2"x2" Base (4" Flange Tip to Tip), White  |
| Case Qty/Wgt: 45 Pcs @ 38 Lbs |   |

### Base Cover



| Part Number     | Description        |
|-----------------|--------------------|
| WI-2PCS-PB-2X2B | 2 Piece Base Cover |

### Ball Cap (Press Fit)



| Part Number  | Description                                   |
|--|---|
| WI-IBC-200   | 2" Mill Finish Die Cast Aluminum Ball Cap     |
| W-IBC-250  | 2 1/2" Mill Finish Die Cast Aluminum Ball Cap |
| WI-IBC-300   | 3" Mill Finish Die Cast Aluminum Ball Cap     |
| UBC4   | 4" Mill Finish Die Cast Aluminum Ball Cap     |
| Ball Caps Are Also Available in Black, Bronze, and White |   |

Call for Case Qty's/Weights on all Caps\*

### Ball Cap



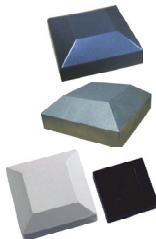
| Part Number | Description                        |
|-------------|------------------------------------|
| WI-6166-BK  | 2" X 2" Die Cast Aluminum Ball Cap |

### Ball Cap (Set Screw)

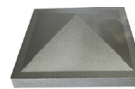


| Part Number | Description                   |
|-------------|-------------------------------|
| 50054       | 2" Mill Aluminum Ball Cap     |
| 50055       | 2 1/2" Mill Aluminum Ball Cap |
| 50056       | 3" Mill Aluminum Ball Cap     |
| 50057       | 4" Mill Aluminum Ball Cap     |

### Post Cap (Flat Top)



| Part Number   | Description                | Case Qty/Wgt* |
|---------------|----------------------------|---------------|
| WI-IPC-150    | 1 1/2" Mill Alum. Post Cap | 100Pcs@36Lbs  |
| WI-IPC-200    | 2" Mill Alum. Post Cap     | 500Pcs@36Lbs  |
| WI-RPC-2NL    | 2" Mill Alum. Post Cap     | 300Pcs@28Lbs  |
| WI-RPC-2NL-BK | 2" Black Alum. Post Cap    | 300Pcs@28Lbs  |
| WI-RPC-2NL-BZ | 2" Bronze Alum. Post Cap   | 300Pcs@28Lbs  |
| WI-IPC-250    | 2 1/2" Mill Alum. Post Cap | 320Pcs@28Lbs  |
| WI-IPC-300    | 3" Mill Alum. Post Cap     |               |
| WI-IPC-400    | 4" Mill Alum. Post Cap     | 120Pcs@36Lbs  |



### Post Cap (Pyramid)

| Part Number | Description               |
|-------------|---------------------------|
| 50053       | 6" Mill Aluminum Post Cap |



### Butterfly Scroll

| Part Number                  | Description                       |
|------------------------------|-----------------------------------|
| USS1                         | 5/8" Butterfly Scroll Mill Finish |
| URGSS1                       | 3/4" Butterfly Scroll Mill Finish |
| WI-BS-100                    | 3/4" Butterfly Scroll Mill Finish |
| Call for Case Qty's/Weights* |                                   |



### Estate Scroll

| Part Number                                    | Description                    |
|--|--------------------------------|
| ULS1   | 5/8" Estate Scroll Mill Finish |
| URGSL1   | 3/4" Estate Scroll Mill Finish |
| Case Qty/Wgt: 50 Pcs @ 50 Lbs; 27 Pcs @ 29 Lbs |                                |



### Estate Scroll

| Part Number   | Description                    |
|---|--------------------------------|
| 50180   | 5/8" Estate Scroll Mill Finish |
| 50178   | 3/4" Estate Scroll Mill Finish |
| 50179   | 1" Estate Scroll Mill Finish   |
| Case Qty/Wgt: 60 Pcs @ 60Lbs; 60 Pcs @ 45Lbs; 60 Pcs @ 45Lbs* |                                |

### Cast Rings



| Part Number                                       | Description             |
|---|-------------------------|
| WI-AGR-600  | 5/8" Cast Aluminum Ring |
| WI-AGR-75   | 3/4" Cast Aluminum Ring |
| Case Qty/Wgt: 300 Pcs @ 63 Lbs; 150 Pcs @ 35 Lbs* |                         |



| Part Number                        | Description      |
|------------------------------------|------------------|
| WI-RING-3                          | 3" Aluminum Ring |
| Case Qty/Weight: 250 Pcs @ 45 Lbs* |                  |



| Part Number                  | Description          |
|------------------------------|----------------------|
| WI-RING-WD                   | 3 7/8" Aluminum Ring |
| Call for Case Qty's/Weights* |                      |



| Part Number                        | Description                    |
|------------------------------------|--------------------------------|
| WI-AG-DR-73                        | 5/8" Cast Aluminum Double Ring |
| Case Qty/Weight: 100 Pcs @ 46 Lbs* |                                |



| Part Number                       | Description             |
|-----------------------------------|-------------------------|
| WI-4RING                          | 5/8" Aluminum Quad Ring |
| Case Qty/Weight: 50 Pcs @ 40 Lbs* |                         |

### Quad Finials



| Part Number   | Description             | Case Qty/Wgt*    |
|---------------|-------------------------|------------------|
| RSUIMP        | 5/8" Quad Finial, Mill  | 300 pcs @ 42 lbs |
| WI-IQF-740    | 3/4" Quad Finial, Mill  | 300 pcs @ 36 lbs |
| WI-IQF-990    | 1" Quad Finial, Mill    | 100 pcs @ 30 lbs |
| WI-IQF-740-BK | 3/4" Quad Finial, Black | 100 pcs @ 30 lbs |



| Part Number | Description      | Case Qty/Wgt*    |
|-------------|------------------|------------------|
| WI-50302-BK | 5/8" Quad Finial | 600 pcs @ 38 lbs |



\*Not All Products are Stock Items.  
Call to Check On Hand Inventory.

\*Case Qty's/Weights May Change



### Quad Finials (Large Quad)

| Part Number                        | Description                |
|------------------------------------|----------------------------|
| INUIMP                             | 1" Quad Finial Mill Finish |
| Case Qty/Weight: 180 Pcs @ 31 Lbs* |                            |

### Triad Finials

| Part Number   | Description              | Case Qty/Wgt*    |
|---------------|--------------------------|------------------|
| RSUMAJ        | 5/8" Triad Finial, Mill  | 300 pcs @ 39 lbs |
| WI-ITF-740    | 3/4" Triad Finial, Mill  | 400 pcs @ 36 lbs |
| WI-ITF-740-BK | 3/4" Triad Finial, Black | 210 pcs @ 44 lbs |
| INUMAJ        | 1" Triad Finial, Mill    | 210 pcs @ 44 lbs |

### Victorian Finials

| Part Number                                       | Description                       |
|---|-----------------------------------|
| RSUVIC  | 5/8" Victorian Finial Mill Finish |
| RGUVIC  | 3/4" Victorian Finial Mill Finish |
| Case Qty/Wgt: 350 Pcs @ 35 Lbs; 400 Pcs @ 32 Lbs* |                                   |

### Estate Hinge - Aluminum

| Part Number                                     | Description                    |
|---|--------------------------------|
| WI-IH-AE  | 2" Aluminum Extruded Block     |
| WI-IH-AE-2.5                                    | 2 1/2" Aluminum Extruded Block |
| Case Qty/Wgt: 50 Pcs @ 38 Lbs; 50 Pcs @ 40 Lbs* |                                |

### Estate Hinge - Steel

| Part Number  | Description        |
|--------------|--------------------|
| WI-IH-SB     | 2" Steel Block     |
| WI-IH-SB-2.5 | 2 1/2" Steel Block |

### Nylon Buhsing

| Part Number                       | Description   |
|-----------------------------------|---------------|
| WI-IH-NB                          | Nylon Bushing |
| Case Qty/Weight: 50 Pcs @ 13 Lbs* |               |

### Steel Plate

| Part Number | Description                      |
|-------------|----------------------------------|
| WI-SNP-R    | 4" Steel Plate Rounded           |
| WI-PLATE-4  | 4" Zinc Plate Drilled and Tapped |
| WI-PLATE-6  | 6" Zinc Plate Drilled and Tapped |

### Stainless Steel Pin

| Part Number                       | Description               |
|-----------------------------------|---------------------------|
| WI-SSHP                           | Stainless Steel Hinge Pin |
| Case Qty/Weight: 50 Pcs @ 46 Lbs* |                           |

### Block Hinge

| Part Number                       | Description                   |
|-----------------------------------|-------------------------------|
| WI-BH                             | Aluminum Block Hinge          |
| WI-BH-SA                          | Aluminum To Steel Block Hinge |
| Case Qty/Weight: 18 Pcs @ 46 Lbs* |                               |

### Flanged Block Hinge

| Part Number                  | Description                  |
|------------------------------|------------------------------|
| WI-SF-ABHT                   | Aluminum Flanged Block Hinge |
| WI-SF-SBHT                   | Steel Flanged Block Hinge    |
| Call for Case Qty's/Weights* |                              |

### Offset Flange Block Hinge

| Part Number                       | Description          |
|-----------------------------------|----------------------|
| WI-SBH-BI-A                       | Aluminum Block Hinge |
| Case Qty/Weight: 16 Pcs @ 46 Lbs* |                      |



### Industrial Aluminum Hinge

| Part Number                         | Description                      |
|-------------------------------------|----------------------------------|
| WI-AIH-BK                           | 2" Industrial Aluminum Hinge     |
| WI-AIH-2.5-BK                       | 2 1/2" Industrial Aluminum Hinge |
| Case Qty/Weight: 20 Pairs @ 35 Lbs* |                                  |

### Commercial Aluminum Hinge

| Part Number                  | Description                       |
|------------------------------|-----------------------------------|
| WI-ELH-2                     | 2" x 2" Commercial Aluminum Hinge |
| Call for Case Qty's/Weights* |                                   |

### Residential Aluminum Hinge

| Part Number                  | Description                        |
|------------------------------|------------------------------------|
| WI-AEH-1x2                   | 1" x 2" Residential Aluminum Hinge |
| Call for Case Qty's/Weights* |                                    |

### Nylon Spring Hinge

| Part Number                        | Description              |
|------------------------------------|--------------------------|
| WI-1017-SN                         | Black Nylon Spring Hinge |
| Case Qty/Weight: 100 Pcs @ 42 Lbs* |                          |

### Horizontal/Vertical Self Closing Nylon Hinge

| Part Number                         | Description                              |
|-------------------------------------|--|
| WI-SCHN-VHA                         | Black/Flange Size 4"(H)X2.75"(W)X1.5"(D) |
| WI-SCHN-VHA-W                       | White/Flange Size 4"(H)X2.75"(W)X1.5"(D) |
| Case Qty/Weight: 12 Pairs @ 48 Lbs* |  |

### Self Closing Nylon Adjustable Hinge

| Part Number                         | Description                            |
|-------------------------------------|--|
| WI-JH500-N                          | Black/Flange Size 5"(H)X3.25"(W)X1"(D) |
| Case Qty/Weight: 12 Pairs @ 37 Lbs* |  |

### Self Closing Nylon Hinge

| Part Number                       | Description             |
|-----------------------------------|-------------------------|
| WI-JH501-N-BK                     | Black/Both Legs 1"X4.5" |
| Case Qty/Weight: 25 Pcs @ 32 Lbs* |                         |

### Self Closing Adjustable Hinge

| Part Number                         | Description             |
|-------------------------------------|-------------------------|
| WI-JH500-BK                         | Angled Leg 1" X 1" X 5" |
| WI-JH500-BZ                         | Straight Leg 2" X 5"    |
| Case Qty/Weight: 50 Pairs @ 33 Lbs* |                         |

### Self Closing Adjustable Hinge

| Part Number                  | Description                     |
|------------------------------|---------------------------------|
| WI-JH501-BK                  | Angled Leg 1" X 1" X 5", Black  |
| WI-JH501-BZ                  | Angled Leg 1" X 1" X 5", Bronze |
| Call for Case Qty's/Weights* |                                 |

\*Not All Products are Stock Items.  
Call to Check On Hand Inventory.

\*Case Qty's/Weights May Change



### Ornamental Steel Hinge

| Part Number | Description           | Case Qty/Wgt*   |
|-------------|-----------------------|-----------------|
| WI-62NSC-ZP | For Small Frame Gates | 32 pcs @ 42 lbs |
| WI-62SC-ZP  | For Small Frame Gates | 30 pcs @ 43 lbs |



### Stainless Steel Hinge, Self Closing

| Part Number                  | Description        |
|------------------------------|--------------------|
| WI-65-SS                     | Self Closing Hinge |
| Call for Case Qty's/Weights* |                    |



### Spring Hinge, Zinc Plated

| Part Number                        | Description                             |
|------------------------------------|---|
| WI-1017-26                         | Black Spring Hinge 3" (H) X 2 5/8" (W)  |
| WI-1017-36                         | Bronze Spring Hinge 3" (H) X 2 5/8" (W) |
| WI-1017-56                         | White Spring Hinge 3" (H) X 2 5/8" (W)  |
| WI-1017-Z/P                        | Mill Spring Hinge 3" (H) X 2 5/8" (W)   |
| Case Qty/Weight: 100 Pcs @ 40 Lbs* |   |

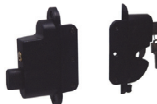


U.S. Patent  
D107,104

### DualMag Latch



| Part Number                       | Description         |
|-----------------------------------|---------------------|
| WI-DUALMAG                        | Magnetic Gate Latch |
| Case Qty/Weight: 20 Pcs @ 40 Lbs* |                     |



### Nylon Double Locking Latch

| Part Number                       | Description                      |
|-----------------------------------|----------------------------------|
| WI-DLL                            | Black Nylon Double Locking Latch |
| WI-DLL-W                          | White Nylon Double Locking Latch |
| Case Qty/Weight: 20 Pcs @ 30 Lbs* |                                  |



### Nylon Single Locking Latch

| Part Number                       | Description                      |
|-----------------------------------|----------------------------------|
| WI-SLL                            | Black Nylon Single Locking Latch |
| WI-SLL-W                          | White Nylon Single Locking Latch |
| Case Qty/Weight: 20 Pcs @ 21 Lbs* |                                  |



### Mighty Mag Magnetic Latch™

| Part Number                       | Description                   |
|-----------------------------------|-------------------------------|
| WI-1041                           | 19" Black Magnetic Gate Latch |
| WI-1041-W                         | 19" White Magnetic Gate Latch |
| Case Qty/Weight: 20 Pcs @ 30 Lbs* |                               |



### Mighty Mag Magnetic Latch (Short)

| Part Number                       | Description                  |
|-----------------------------------|------------------------------|
| WI-1041S                          | 9" Black Magnetic Gate Latch |
| WI-1041S-W                        | 9" White Magnetic Gate Latch |
| Case Qty/Weight: 20 Pcs @ 25 Lbs* |                              |



### Gravity Latch

| Part Number                       | Description                   |
|-----------------------------------|-------------------------------|
| WI-GLFB                           | Gravity Latch w/ Floating Bar |
| Case Qty/Weight: 50 Pcs @ 28 Lbs* |                               |



### Heavy Duty Gravity Latch

| Part Number                       | Description              |
|-----------------------------------|--------------------------|
| WI-GL-HD                          | Heavy Duty Gravity Latch |
| Case Qty/Weight: 50 Pcs @ 30 Lbs* |                          |



### Gravity Latch

| Part Number                       | Description               |
|-----------------------------------|---------------------------|
| WI-GL-B                           | Black Gravity Latch       |
| WI-GL-BZ                          | Bronze Gravity Latch      |
| WI-GL-W                           | White Gravity Latch       |
| WI-GL-ZP                          | Zinc Plated Gravity Latch |
| Case Qty/Weight: 50 Pcs @ 18 Lbs* |                           |



### Heavy Duty Drop Rods

| Part Number | Description          | Case Qty/Wgt*   |
|-------------|----------------------|-----------------|
| WI-DR-18    | 18" Long w/ 5/8" Dia | 20 pcs @ 52 lbs |
| WI-DR-24    | 24" Long w/ 5/8" Dia | 10 pcs @ 52 lbs |
| WI-DR-24Z   | 24" Long w/ 5/8" Dia | 10 pcs @ 83 lbs |
| WI-DR-36    | 36" Long w/ 5/8" Dia | 10 pcs @ 35 lbs |
| WI-DR-48    | 48" Long w/ 5/8" Dia | 10 pcs @ 83 lbs |



### Nylon Handle

| Part Number                        | Description                              |
|------------------------------------|--|
| WI-NGH                             | Black Nylon Gate Handle 1.5"(W)X1.25"(D) |
| WI-NGH-W                           | White Nylon Gate Handle 1.5"(W)X1.25"(D) |
| Case Qty/Weight: 200 Pcs @ 20 Lbs* |  |



### Nylon Gate Stop

| Part Number                       | Description           |
|-----------------------------------|-----------------------|
| WI-NGH-SB                         | Black Nylon Gate Stop |
| WI-NGH-SB-W                       | White Nylon Gate Stop |
| Case Qty/Weight: 50 Pcs @ 22 Lbs* |                       |



### Single Hole Lock Box

| Part Number                       | Description       |
|-----------------------------------|-------------------|
| WI-LB-S                           | One Hole Lock Box |
| Case Qty/Weight: 50 Pcs @ 28 Lbs* |                   |



### Double Hole Lock Box

| Part Number                       | Description          |
|-----------------------------------|----------------------|
| WI-LB-D                           | Double Hole Lock Box |
| Case Qty/Weight: 50 Pcs @ 40 Lbs* |                      |





### 2" Flat Mount Bracket

| Part Number                       | Description           |
|-----------------------------------|-----------------------|
| WI-FBB-2                          | 2" Flat Mount Bracket |
| Case Qty/Weight: 84 Pcs @ 42 Lbs* |                       |



### 2" Ornamental Line Bracket

| Part Number                       | Description                |
|-----------------------------------|----------------------------|
| WI-OILB-2                         | 2" Ornamental Line Bracket |
| Case Qty/Weight: 84 Pcs @ 45 Lbs* |                            |



### 1" Universal Wall Mount Bracket

| Part Number                        | Description                     |
|------------------------------------|---------------------------------|
| WI-OB-1                            | 1" Universal Wall Mount Bracket |
| Case Qty/Weight: 200 Pcs @ 55 Lbs* |                                 |



### Latch Hanger

| Part Number  | Description         | Case Qty/Wgt*    |
|--------------|---------------------|------------------|
| WI-LH-1-1/4B | 1 1/4" Latch Hanger | 100 pcs @ 51 lbs |
| WI-LH-1-3/4B | 1 3/4" Latch Hanger | 50 pcs @ 32 lbs  |
| WI-LH-2B     | 2" Latch Hanger     | 25 pcs @ 18 lbs  |



### Fork Latch

| Part Number    | Description       | Case Qty/Wgt*    |
|----------------|-------------------|------------------|
| WI-FORK-1-1/4B | 1 1/4" Fork Latch | 100 pcs @ 32 lbs |
| WI-FORK-1-3/4B | 1 3/4" Fork Latch | 50 pcs @ 20 lbs  |
| WI-FORK-2B     | 2" Fork Latch     | 50 pcs @ 20 lbs  |
| WI-FORK-3B     | 3" Fork Latch     | 50 pcs @ 28 lbs  |



### Offset Male Hinge

| Part Number                  | Description              |
|------------------------------|--------------------------|
| WI-OMH-1-1/2B                | 1 1/2" Offset Male Hinge |
| WI-OMH-2B                    | 2" Offset Male Hinge     |
| WI-OMH-3B                    | 3" Offset Male Hinge     |
| Call for Case Qty's/Weights* |                          |



### Offset Female Hinge

| Part Number                  | Description                |
|------------------------------|----------------------------|
| WI-OFH-1-1/4B                | 1 1/4" Offset Female Hinge |
| WI-OFH-1-3/4B                | 1 3/4" Offset Female Hinge |
| WI-OFH-2B                    | 2" Offset Female Hinge     |
| Call for Case Qty's/Weights* |                            |



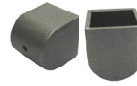
### Steel Ring

| Part Number                  | Description |
|------------------------------|-------------|
| WI-STEELRING                 | Steel Ring  |
| Call for Case Qty's/Weights* |             |



### Steel Cap 2"

| Part Number                        | Description  |
|------------------------------------|--------------|
| WI-CAP-2B                          | 2" Steel Cap |
| Case Qty/Weight: 200 pcs @ 28 lbs* |              |



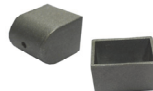
### 1" Swivel Bracket

| Part Number                  | Description       |
|------------------------------|-------------------|
| URAC                         | 1" Swivel Bracket |
| Call for Case Qty's/Weights* |                   |



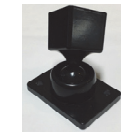
### 1" Base Bracket

| Part Number                  | Description     |
|------------------------------|-----------------|
| URAB                         | 1" Base Bracket |
| Call for Case Qty's/Weights* |                 |



### 1 1/2" Swivel Bracket

| Part Number                  | Description           |
|------------------------------|-----------------------|
| UOAC                         | 1 1/2" Swivel Bracket |
| Call for Case Qty's/Weights* |                       |



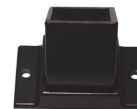
### Swivel Bracket

| Part Number                  | Description    |
|------------------------------|----------------|
| WI-6192-BK                   | Swivel Bracket |
| Call for Case Qty's/Weights* |                |



### 1 1/2" Base Bracket

| Part Number                  | Description         |
|------------------------------|---------------------|
| UOAB                         | 1 1/2" Base Bracket |
| Call for Case Qty's/Weights* |                     |



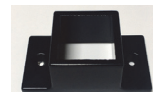
### 1" Swivel Bracket and Base Set

| Part Number                  | Description                         |
|------------------------------|-------------------------------------|
| URABC-B                      | 1" Swivel Bracket and Base          |
| WI-SB-1-1/4B                 | 1 1/4" x 1" Swivel Bracket and Base |
| Call for Case Qty's/Weights* |                                     |



### 1" Fixed Bracket

| Part Number                  | Description                |
|------------------------------|----------------------------|
| URAE-B                       | 1" Swivel Bracket and Base |
| URAE-BZ                      | 1" Swivel Bracket and Base |
| Call for Case Qty's/Weights* |                            |



### 1" Fixed Bracket

| Part Number | Description                |
|-------------|----------------------------|
| URAE-B      | 1" Swivel Bracket and Base |



### Goose Neck Pedestal – Pad Mount

| Part Number                     | Description                   |
|---------------------------------|-------------------------------|
| WI-ACA-1                        | 42" Access Control Arm w/Base |
| WI-ACA-2                        | 48" Access Control Arm w/Base |
| Case Qty/Weight: 1 pc @ 17 lbs* |                               |



### Goose Neck Pedestal – Direct Burial

| Part Number                     | Description                          |
|---------------------------------|--------------------------------------|
| WI-ACA-1-B                      | 54" Direct Burial Access Control Arm |
| WI-ACA-72-B                     | 72" Direct Burial Access Control Arm |
| Case Qty/Weight: 1 Piece @ 1Lbs |                                      |



### Goose Neck DUAL Pedestal – Pad Mount

| Part Number                      | Description            |
|----------------------------------|------------------------|
| WI-GNC-DUAL-72                   | 72" Dual Gooseneck Arm |
| Case Qty/Weight: 1 Piece @ 42Lbs |                        |



### Goose Neck Heavy Duty Pedestal

| Part Number                     | Description         |
|---------------------------------|---------------------|
| WI-ACA-HD                       | Heavy Duty Pedestal |
| Call for Case Qtys and Weights* |                     |



### Machined Bracket

| Part Number                     | Description          |
|---------------------------------|----------------------|
| WI-AMBRK-ZP                     | Machined Bracket Z/P |
| Call for Case Qtys and Weights* |                      |



### Panic Bar

| Part Number                  | Description               |
|------------------------------|---------------------------|
| WI-PANICBAR                  | Stainless Steel Panic Bar |
| Case Qty/Weight: 6Pcs @47Lbs |                           |



### Panic Bar, Heavy Duty Square Lever

**New!**

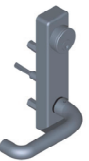
| Part Number                  | Description                            |
|------------------------------|--|
| WI-PAHDSL-R                  | Lockable Steel Heavy Duty Square Lever |
| Call for Case Qty's/Weights* |  |



### Panic Bar, Pull Trim

**New!**

| Part Number                  | Description                   |
|------------------------------|-------------------------------|
| WI-PAPT                      | Lockable Zinc Alloy Pull Trim |
| Call for Case Qty's/Weights* |                               |



### Panic Bar, Round Lever

**New!**

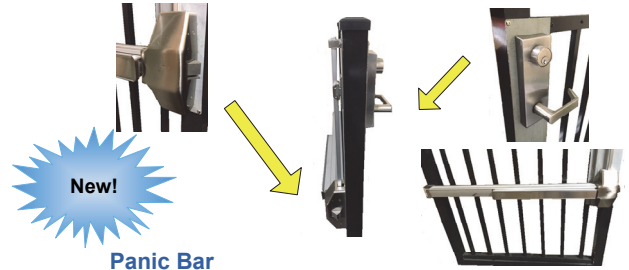
| Part Number                  | Description                     |
|------------------------------|---------------------------------|
| WI-PARL-F                    | Lockable Zinc Alloy Round Lever |
| Reversible Lever Available   |                                 |
| Call for Case Qty's/Weights* |                                 |



### Panic Bar, Square Lever

**New!**

| Part Number                  | Description                      |
|------------------------------|----------------------------------|
| WI-PASL-F                    | Lockable Zinc Alloy Square Lever |
| Reversible Lever Available   |                                  |
| Call for Case Qty's/Weights* |                                  |



**New!**

### Panic Bar

| Part Number                  | Description  |
|------------------------------|--|
| WI-PANICBAR-1                | Stainless Steel Panic Bar, 2 sided entry, pool use certified |
| Case Qty/Weight: 6Pcs @40Lbs |  |

### Panic Bar Kit

| Part Number                  | Description          |
|------------------------------|----------------------|
| WI-PANICKIT-B                | Panic Bar Kit, Black |
| WI-PANICKIT-M                | Panic Bar Kit, Mill  |
| Call for Case Qty's/Weights* |                      |



**New!**



### Panic Bar

**New!**

| Part Number | Description               |
|-------------|---------------------------|
| WI-PANICBAR | Stainless Steel Panic Bar |



Your Sales Rep:

Office 813.248.9800  
Fax 813.248.9900