



A monthly publication of the Presque Isle Woodturners

# Turn to the News

Volume 3 Issue 8

August 2015

## Highlights

- Picnic

## Inside this issue:

FIY	2
Library News	3
Activity Calendar	3
Board Contacts	4
About PIW	5
Around the Web	5
Homemade vaporizer	6
For Sale	11

## Meeting Notes

We were privileged to have 2 demos, Alan Trout and Molly Winton. Alan showed us how he finishes pieces using CA glue. Molly demoed her wood burning and branding techniques, and also held 2 classes. ([Pictures on page 12](#)) Burning wood is a lot of fun and very easy providing you have a woodburner. For you DIY's, starting on [page 6](#) is an article on making a very nice homemade version. Thanks Paul.

New DVD's are in the library. Ashly Harwood, Sea Urchin ornaments; Doug Thompson, tool grinding; Glen Lucas, sharpening techniques, John Beaver, wave bowls demo.

Larry Stadler has a One Way 1018 for sale for \$1000. Contact Larry for more info.

See [page 9](#) for more tools for sale.

## President's Message

Well the symposium in Pittsburgh is over, expectations of 2,200 folks attending did not happen. The number I kept hearing was 1,400. If the stated cost of 3/4 million to put it on was correct I would think that once again they lost money. I enjoyed seeing those of you that at least came down for the day. I hope you all enjoyed the Instant Gallery. I'm sure the Trade Floor was also an eye opener.

**August 1st is our annual picnic**, once again it will be at the Mount thanks to Audrey. Fried chicken will once again be the main course. Please bring a dish to share and also bring something for the raffle table. I look forward to seeing you all there, let's look for a starting time of 1PM to eat so let's get there before that. Some of you will have to set up the tables. The picnic is a highlight for our club so I hope to see great participation.

# FYI

## Member Projects

If you have a woodturning project that you would like to showcase to our club members, you can send me detailed information about your project with pictures.

## Classified Ads

Ads for woodturning and woodworking related items are free to members. Send detailed information with pictures.

## Members Questions & Answers

Members are asked to submit woodturning, finishing and tool questions to our resident experts to answer. There are no dumb questions, someone else in the club may have had the same questions.

## Wood to Turn

Do you have wood, need wood or know about wood that is available for turning? Let me know and I'll pass it along. .

## Tips & Tricks

### Removable handles for half-inch tools

I normally use permanent handles for my tools but also like removable handles for traveling or teaching. An easy way to make adapters

for ½" (13mm) tools is to use a ½" flare tubing nut and double-ended union, as shown in *Photo 1*. Chuck the union in your lathe and drill

the center hole to ½". Alternatively, you could drill the union at the drill press. Mount one end of the union in a turned wood handle with epoxy and then make three equally spaced cuts in the union (*Photo 2*).

With your tool inserted into the adapter, slide the flare nut over the tool and tighten onto the union to lock the tool in place (*Photo 3*). Simply loosen the flare nut to release the tool from the handle. For safety reasons, drill the ½" hole in the wooden handle well beyond the union for extra support. This technique will also work for ⅜" (10mm) adapters.

—Dave Mueller,  
Texas



## Library News

One of the greater assets of PIW is the extensive library of tapes, DVDs, books, and reference materials available in the club library. If you have not already done so, take a few moments and browse through the

materials. Materials are offered on an honor system. Please sign the card attached to the desired item and place it in the Library black box. When you return the item, retrieve the card from the box, cross out your name and place

### Latest Additions

- ◆ See Bill Noce for more information

## PIW Activities calendar

Annual Picnic

August 1st



## PIW Board 2014 and Elected Officers

### *President*

Bill Blasic  
piwtrnr@verizon.net  
814-796-4609

### *Vice-president*

Joe Herrmann  
latheturner@windstream.net  
440-563-5785

### *Craig McCune*

Secretary  
craig\_mccune@roadrunner.com  
814-833-7409

### *Treasurer & Club Photographer*

John Fox  
jkfox@roadrunner.com

### *Elected Board Member*

Bill Noce  
[nocnoc@zitomedia.net](mailto:nocnoc@zitomedia.net)  
440-997-8908

### *Elected Board Member*

Jim Meyer  
blossomandjimbo@adelphia.net  
814-474-5106

### *In place of Past President*

Don Proctor  
h2opolo@roadrunner.com  
814-449-1902

## Mentor Contacts

### Bill Blasic

11291 Lake Pleasant Road,  
Union City, PA 16438

814-796-4609

### Dave Swanson

7279 Rohl Road, North East, PA  
16428

814-899-5175

### John Fox:

176 Cambridge Road, Erie, Pa  
16511

814-434-3445

*For new turners and those looking to expand their skills, PIW has established a 'Mentor List' of those members willing to assist in that effort. Please make arrangements directly with anyone on the list for help.*

For contact information updates, including your email or mailing address, please contact Terry at [piwnewsletter@gmail.com](mailto:piwnewsletter@gmail.com)



## About PIW

Presque Isle Woodturners Inc. is affiliated with the American Association of Woodturners and is organized exclusively for educational purposes with a mission to educate woodturners and the public, in and about the art and craft of woodturning. This is accomplished by encouraging and facilitating training programs for woodturners, disseminating information about sources of material and equipment, exposing the art of woodturning to the general public, and serving as a resource for any group or individual interested in woodturning.

Presque Isle Woodturners was originally organized in 1999 by a small group of individuals with a common interest in woodturning. The PIW has grown to a group of over 50 members and became incorporated as a non-profit organization in 2003.

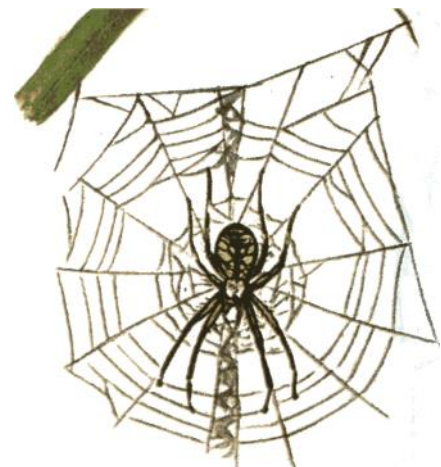
The sharing of experience between members, presentations by invited woodturners of regional and national reputation, and an extensive library of books and videos on the subject of turning are benefits of membership. Topics covered at any meeting may include turning technique, design, safety, finishing methods, and ideas for projects.

Meetings are held the first Wednesday of each month at 2831 West 23rd St. (Behind Parker's Garage) at 7:00 PM. Visitors are welcome any time, join us.

## Around the Web

[PIW Woodturners](#)

Club web site



There are several "Pyrography Systems" (little, variable power, power supply with plug in "pens") you can buy "ready to go out of the box" which will let you scorch or "burn" lines, dots, simple patterns etc. into wood. A boat load of "pens" with an amazing number of "tips" are available for those units.

Then there's Graeme Priddle's Wood Vaporizer. He doesn't just scorch, or burn or brand wood - he vaporizes it - in a flash of light and a puff of smoke! No wimpy little power supply and delicate little "pen" with this set up. He starts with a 10 amp, 12 volt, car battery charger and makes his own "pen" and bends pretty heavy duty nichrome wire to make his own tips.

If you have seen him work with this tool, or seen a few of his pieces that used this tool, you may have thought "I'd like to do that type of thing on one of my pieces." Then you start looking into what you need to get, or put together. Often the path ends there - there's not a lot of info on this thing. The following is an attempt to fill in some holes in what was out there before.

BUT - before we get to all that - a warning and a disclaimer.

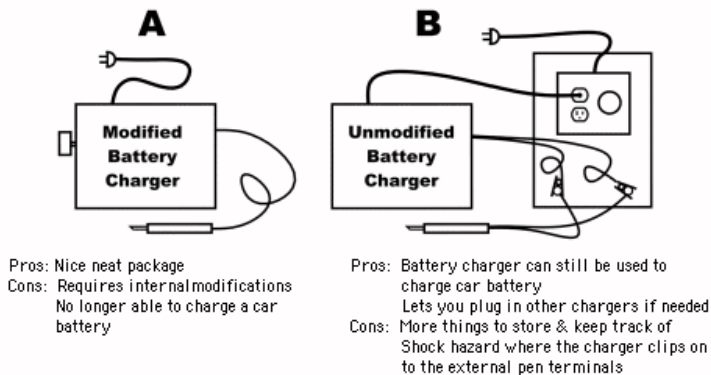
### CAUTION

**ELECTRICITY CAN HURT - OR KILL - YOU.** The following involves both Alternating and Direct Current - "house electricity" and "battery electricity" - and some electrical wiring. It's not rocket science, but it does require some knowledge and understanding of electrical wiring. If you don't have that knowledge and understanding you could a) get hurt or killed and/or b) start a fire that could burn down your shop / garage and maybe your house. Use the following information at your own risk.

### DISCLAIMER

The author of, and contributors to, this article, as well as WoodTurner's Resource, assumes NO responsibility or liability for the use, misuse or abuse of any of the following information. Use of this information is solely the responsibility of the user. In other words - Use At Your Own Risk.

Let's start with two basic approaches to making a Priddle Style Wood Vaporizing System using a simple car battery charger (*sketches and notes kindly provided by John K. Jordan*).

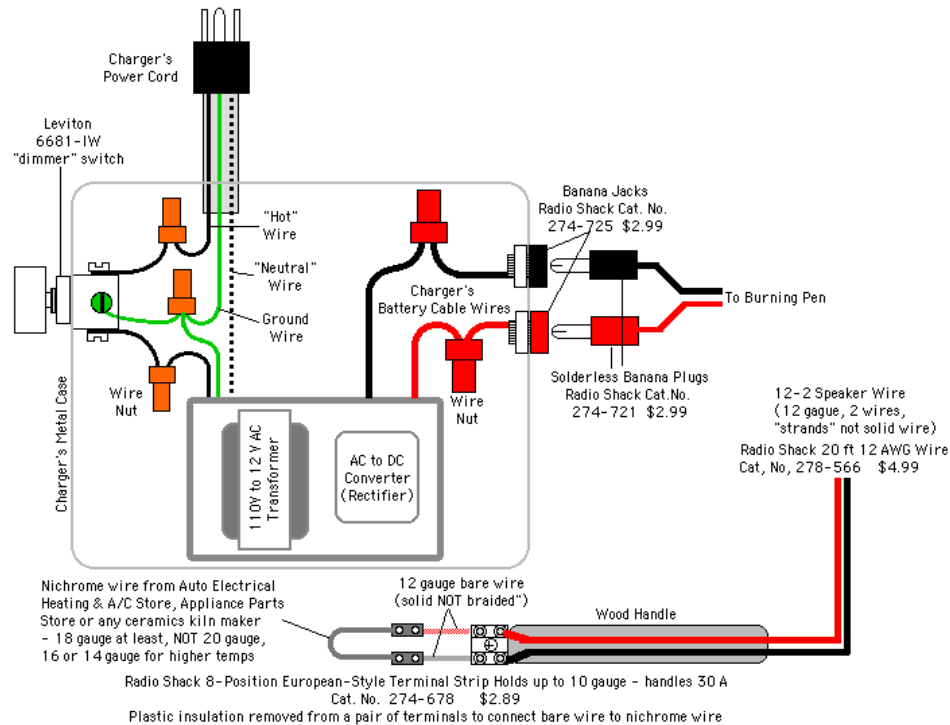


Approach "A" modifies a simple 10A, 12 volt battery charger - INTERNALLY. This involves opening up the case of the charger, making holes in it, installing parts and making wiring connections. The modifications make the battery charger no longer suitable for charging your car battery.

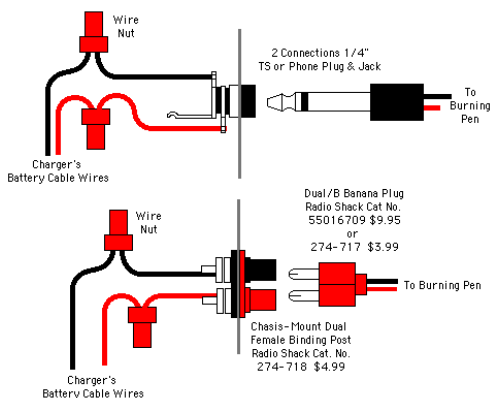
Approach "B" makes no modification to the battery charger. You can continue to use your battery charger to charge your car battery - AND - use it as the power supply for a Wood Vaporizer. All the modifications are made EXTERNAL to the battery charger - the battery charger is merely connected TO the modifications.

Though the internals vary from battery charger to battery charger, all of them have a power cord coming into a metal case from a "house electricity" (AC) source and a thicker direct current (DC) cable coming out of the case, with clips on the ends to attach it to a battery's terminals. With everything unplugged, if you wire in a "dimmer switch" that can handle 5 amps (600 watts) on the AC side and put in some quick disconnect plugs on the DC output side, you can make one or more plug in pens - and scorch, burn or vaporize wood - with all kinds of burning tips you can make by bending nichrome wire.

Here's Approach A - the neat and tidy, all internal, approach - that means you can't use your battery charger to charge batteries anymore. Sometimes you need to give up something to get something else.



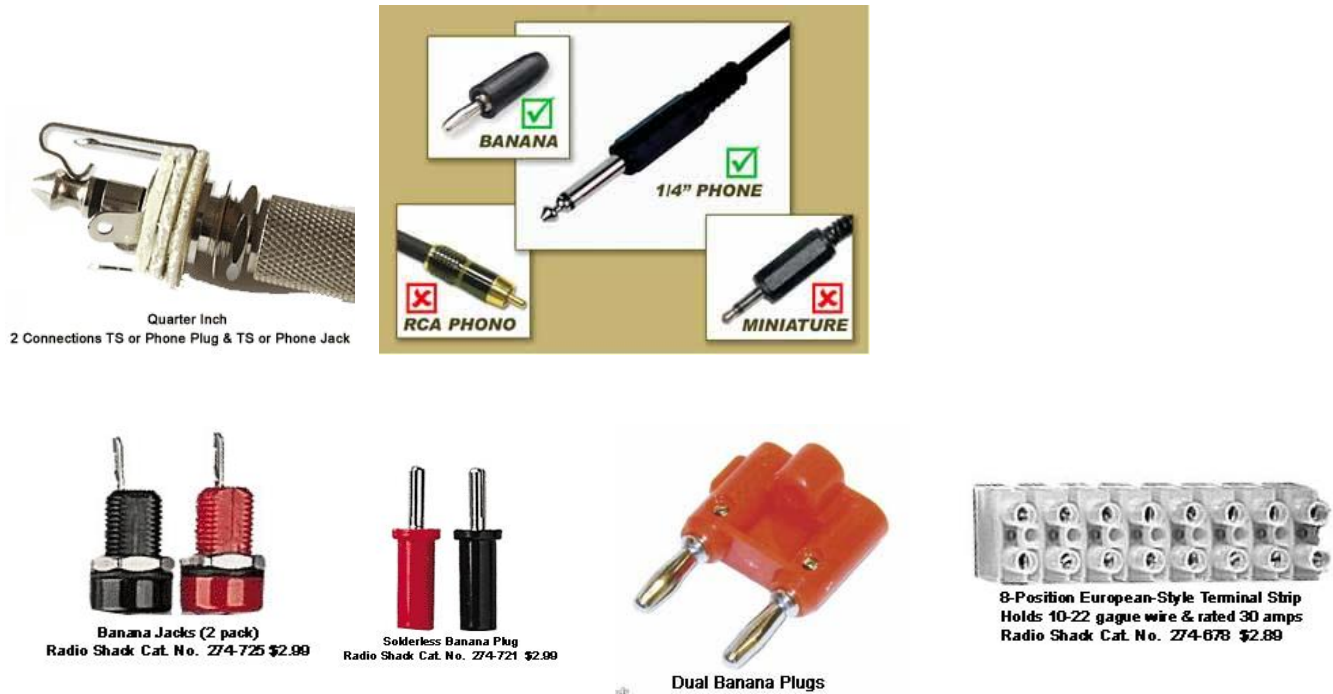
Here are two other methods of connecting the "pen" to the Internally Modified battery charger.



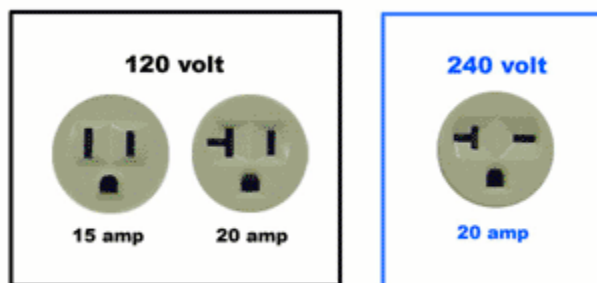


Steve A. asked an obvious question - "Since Approach A's internal changes would make the battery charger no longer useable for charging a car battery - why not just cut off the clips off its cable that used to go to a battery and use them rather than futz with Banana Plugs or Phone Plugs?". The answer of course is DUH! - THAT would work. So there's yet another approach - call it Plan A.0..

For those who prefer photos of parts: photos of parts - kindly provided by John K. Jordan.



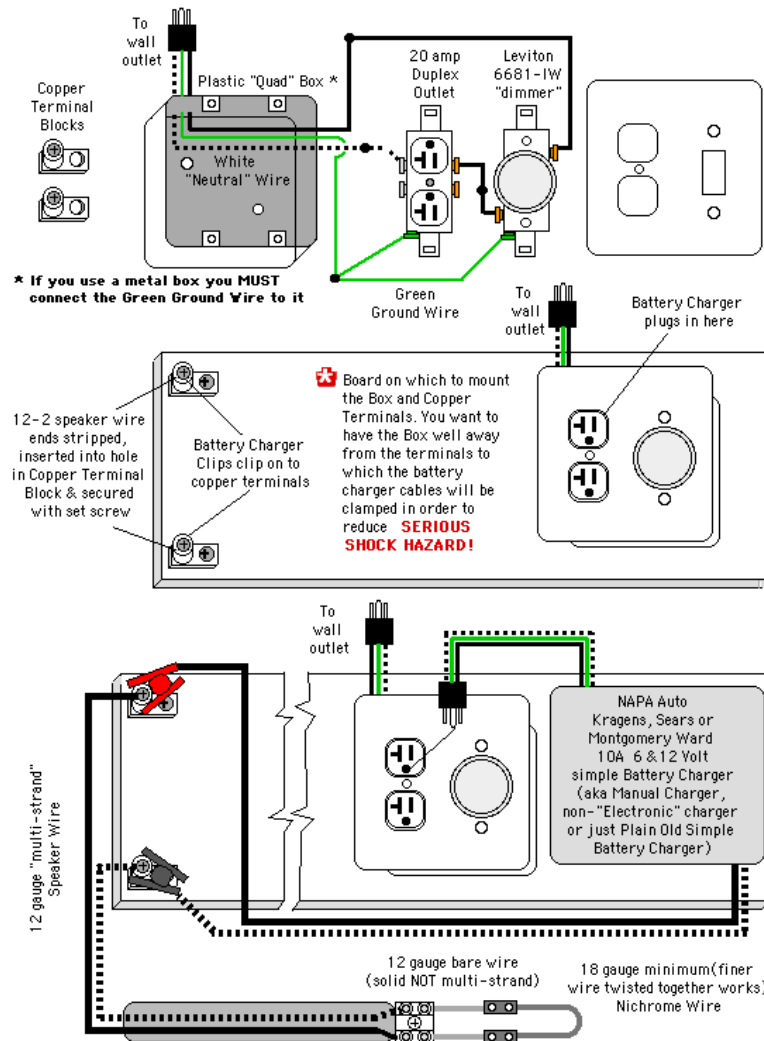
And if you've ever wondered about electrical sockets - John K. Jordan provided the following photos - that may help.





If you want to keep using the battery charger to ALSO charge a car battery, here's Plan B - with all the modifications made EXTERNAL to the battery charger. The following illustrations are based on Steve Antonucci's DIY set up with plenty of help from John on the illustrations

Note: Alternating Current 110 VAC outlets and switches have color coded terminal screws - white/silver, brass/gold and green. Black wires go to Brass terminal screws, White wires go to Silver terminal screws and Green Wires go to Green terminal screws. Remembering this 110V AC wiring convention can come in handy - so reread the previous sentence again. Black To Brass, White To Silver, Green To Green.



#### NOTE:

The exposed connections of the battery cable to the "pen's" electrical terminals present a potential for an electrical short circuit - and is a **SERIOUS SHOCK HAZARD** - just as is when connecting a car battery charger to a car battery. Make the connection **BEFORE** plugging in the unit - and avoid touching both terminals at the same time - in order to avoid shocking the hell ( and possibly the life) out of yourself.

Here's a photo of Steve's set up - clamped to the tool rest of his lathe.

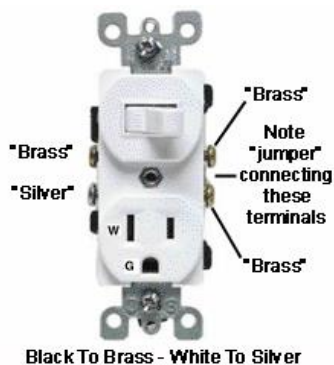


And here's a close up of the working end of Steve's DIY "pen". Note that the bare copper wires between the plastic covered terminals on the end of the handle and the bare terminals connection to the nichrome wire on the pen tip acts as heat sinks, reducing the heat from the hot pen tip before it gets to the plastic insulated terminals.



Because this is a DIY device, there will be some Trial and Error work required to get it to work for you. Too much current and / or too small a diameter nichrome wire will destroy your "pen tip" - in a bright glowing red hot instant.

Dimmer switches don't come with On and Off labels or any markings to identify how much electrical current it's feeding your pen tip. So - you're going to have to do some experimenting to find out how far you must turn the dimmer knob to get the tip to the temperature you want. And that setting will change based on how much nichrome wire the tip you make uses. Figure on burning up a few nichrome wire tips before you. You can of course make black pen marks on the dimmer knob and base plate to give you an idea of the "power level" at different knob positions - but you'll still need to tune things to get the desired temperature at YOUR tip for the type of work YOU are doing.



If you're going to work with a single tip and have found the perfect dimmer switch setting for that tip for the scorching/burning/vaporizing you want to do - and don't want to have to keep resetting the dimmer the next time you turn the unit on - here's a solution - for the External version "B" set up. The "duplex outlet" in the external Dimmer & Outlet Box is replaced with a Switched Outlet. You plug the charger into the Switched Outlet and turn the power to it On or Off using the switch. Now you can set the dimmer to your tip ONCE and leave it there - using the Switched Outlet to turn the charger on or off.

Unless your battery charger has some sort of Power Is On / Power Is Off Light, this thing will look the same on or off. Unless you accidentally touch the tip or the exposed copper wires connecting it to the pen or touch both exposed terminals on the External Approach B. you have no way of telling if the unit is On or Off. So, to avoid an electrical shock, or a burn - or a fire in your garage/shop - **UNPLUG THE UNIT FROM THE WALL OUTLET BEFORE CHANGING TIPS OR WHEN YOU'RE DONE USING IT.**

So there you have it - two approaches to making a Graeme Priddle Style Wood Vaporizer System.



**CRAFSTMAN:**

12" Craftsman Band Saw/Sander with legs, 1/2 HP motor, Model #113243411, purchase date 1979      \$125.00

10" Craftsman Radial Arm Saw, MFG #1170      \$100.00

**DELTA:**

14" Delta Band Saw W/Mobile base and 26" Fence, 3/4 HP Motor, 230 Volt - 12 AMPS, CAT # 28-203      \$400.00

10" Delta Sliding Table Attachment for Unisaw and Contractor saws (Still in Box), Cat#34-555      \$425.00

**DUROCRAFT:**

Durocraft Drill Press with stand, 1978 Model #DP-514      \$100.00

**RYOBI:**

10" Ryobi Planer, 1988 Mod AP-10      \$50.00

**SHOPMASTER:**

Shopmaster Table Saw with stand, heavy cast iron      \$50.00

**Contact Cindy Brandt at 969-4691 for more information**





All pictures from John Fox