



A monthly publication of the Presque Isle Woodturners

# Turn to the News

Volume 3 Issue 9

September 2015

## Highlights

- Picnic Picts

## Inside this issue:

FIY	2
Library News	3
Activity Calendar	3
Board Contacts	4
About PIW	5
Around the Web	5
Resources	6

## Meeting Notes

There were lots of good eats at Audreys place for the annual picnic. (See pictures on page 7.) While everyone has their favorites, I especially liked the spicy rice casserole and the blueberry rolls. (Recipe anyone?) A diverse number of items ranging from plants to wine made the raffle exciting also.

After 10 years as president, Bill has decided to turn the reins over to someone else. Please consider helping out the club and volunteering. Without member participation, events we all look forward to may not continue. If interested, contact one of the club officers.

## President's Message

Well I hope everyone had a good time at the picnic and we did make it through the raffle with a little left over. Thanks for all the contributions. The lathe that I had mentioned now resides at Larry's shop along with the Jet dust collector. If anyone is interested there is still a few items left. A Black and Decker Radial Arm Saw, a Delta 12" bandsaw (220 V), and an old but big Delta Scroll Saw (with built in seat). If you have any interest give me a call.

Our own Joe Herrmann will be doing a hands on in October. Here is an opportunity to learn valuable turning techniques at a most cost effective price. Take advantage of this as these events do not happen often or at all. Enjoy a full day of learning and turning along with lunch. This month Joe is a lead demonstrator at SWAT in Waco TX.

See you all at the next meeting in September where Larry Stadler will be showing us some more pen turning techniques. I'm not sure if everybody knows that we usually meet at Lories Wild Ridge Restaurant at about 4 PM on West 26th Street before every meeting and everyone is invited.

# FYI

## Member Projects

If you have a woodturning project that you would like to showcase to our club members, you can send me detailed information about your project with pictures.

## Classified Ads

Ads for woodturning and woodworking related items are free to members. Send detailed information with pictures.

## Members Questions & Answers

Members are asked to submit woodturning, finishing and tool questions to our resident experts to answer. There are no dumb questions, someone else in the club may have had the same questions.

## Wood to Turn

Do you have wood, need wood or know about wood that is available for turning? Let me know and I'll pass it along. .

## Tips & Tricks

### Magnetic bowls hold jaws during changing

When I got my first scroll chuck, I searched the Internet for ideas on organizing and holding spare chuck jaws. I have long been an advocate of using magnets to hold lathe accessories. I use a magnetic bar to hold T wrenches, tommy bars, and hex keys; I keep several small magnetic trays attached to the lathe for holding things like pen bushings and screws; and I use magnetic note holders to hold strips of abrasive to the lathe so they are at hand when needed. I soon found a solution for holding chuck jaws while I am swapping one size for another: 4" (10cm) and 6" (15cm) magnetic bowls available from auto parts stores.

The rubber-encased magnet on these bowls protects the surface of whatever they are stuck to. I found that I can stick the magnetic bowl to the body of my lathe while changing chuck jaws, but I would not advise keeping them there while turning, as they could shake loose and become a safety hazard.

—Jim Turcott, New York



By permission of AAW

## Library News

One of the greater assets of PIW is the extensive library of tapes, DVDs, books, and reference materials available in the club library. If you have not already done so, take a few moments and browse through the

materials. Materials are offered on an honor system.

Please sign the card attached to the desired item and place it in the Library black box.

When you return the item, retrieve the card from the box, cross out your name and place

### Latest Additions

- ◆ See Bill Noce for more information

## PIW Activities calendar

Larry Stadler

Joe Herrmann

September 2nd

October 7th



## PIW Board 2014 and Elected Officers

### *President*

Bill Blasic

piwtrnr@verizon.net

814-796-4609

### *Vice-president*

Joe Herrmann

latheturner@windstream.net

440-563-5785

### *Craig McCune*

Secretary

craig\_mccune@roadrunner.com

814-833-7409

### *Treasurer & Club Photographer*

John Fox

jkfox@roadrunner.com

814-434-3445

### *Elected Board Member*

Bill Noce

[nocnoc@zitomedia.net](mailto:nocnoc@zitomedia.net)

440-997-8908

### *Elected Board Member*

Jim Meyer

blossomandjimbo@adelphia.net

814-474-5106

### *In place of Past President*

Don Proctor

h2opolo@roadrunner.com

814-449-1902

## Mentor Contacts

Bill Blasic

11291 Lake Pleasant Road,  
Union City, PA 16438

814-796-4609

Dave Swanson

7279 Rohl Road, North East, PA  
16428

814-899-5175

John Fox:

176 Cambridge Road, Erie, Pa  
16511

814-434-3445

*For new turners and those looking to expand their skills, PIW has established a 'Mentor List' of those members willing to assist in that effort. Please make arrangements directly with anyone on the list for help.*

For contact information updates, including your email or mailing address, please contact Terry at [piwnewsletter@gmail.com](mailto:piwnewsletter@gmail.com)



## About PIW

Presque Isle Woodturners Inc. is affiliated with the American Association of Woodturners and is organized exclusively for educational purposes with a mission to educate woodturners and the public, in and about the art and craft of woodturning. This is accomplished by encouraging and facilitating training programs for woodturners, disseminating information about sources of material and equipment, exposing the art of woodturning to the general public, and serving as a resource for any group or individual interested in woodturning.

Presque Isle Woodturners was originally organized in 1999 by a small group of individuals with a common interest in woodturning. The PIW has grown to a group of over 50 members and became incorporated as a non-profit organization in 2003.

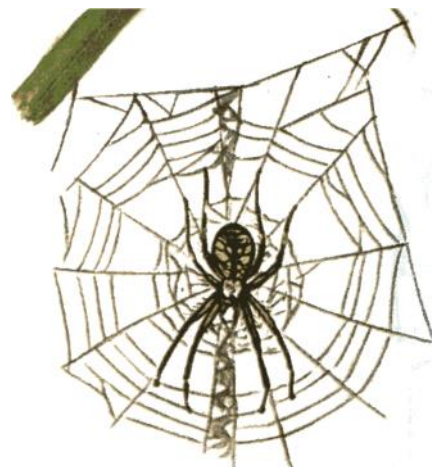
The sharing of experience between members, presentations by invited woodturners of regional and national reputation, and an extensive library of books and videos on the subject of turning are benefits of membership. Topics covered at any meeting may include turning technique, design, safety, finishing methods, and ideas for projects.

Meetings are held the first Wednesday of each month at 2831 West 23rd St. (Behind Parker's Garage) at 7:00 PM. Visitors are welcome any time, join us.

## Site of the Month

### [Woodturning Videos](#)

This site hosts hundreds of woodturning videos on just about any subject.



## Woodturning Resources

### [American Association of Woodturners](#)

Woodturning Association

### **Tools and Supplies**

#### [Bear Tooth Woods](#)

Specialty pen kits

#### [Best Wood Tools](#)

Specialized woodturning tools

#### [Craft Supply](#)

Woodturning Supplies

#### [Craft ID](#)

Signature medallions

#### [Earth's Watch](#)

Wooden jewelry and watches

#### [Franck Johannesen Woodturning](#)

#### [Geiger's Solutions](#)

Robust Lathes and accessories

#### [Klingspor](#)

Abrasives and woodturning supplies

#### [Highland Woodworking](#)

Woodworking tools, supplies

#### [Hunter Tool Systems](#)

Carbide woodturning tools

#### [Hut Products](#)

Woodturning tools, supplies

#### [John Jordan Woodturning](#)

Woodturning tools and more

#### [JT Turning Tools](#)

Woodturning tools & accessories

### [OneWay Manufacturing](#)

Lathes and accessories

#### [Packard](#)

Woodturning Supplies

#### [Peachtree Woodworking Supply](#)

Turning and carving tools, supplies

#### [Penn State](#)

Woodturning tools, supplies

#### [Rockler](#)

Woodworking and Hardware

#### [Ron Brown's Best](#)

Woodturning tools and videos

#### [Sanding Glove](#)

Abrasives and sanding equipment

#### [SS Niles Bottle Stoppers](#)

Stainless steel bottle stoppers

#### [Thompson Lathe Tools](#)

High quality steel woodturning tools

#### [Vinces WoodNWonders](#)

Sanding products

### [Woodcraft of Atlanta](#)

Woodworking and Hardware

#### [Woodturners Wonders](#)

Lathe lamps & CBN wheels

#### [Woodturningz](#)

Pen kits and woodturning supplies

### **Magazines**

#### [More Woodturning](#)

Woodturning magazine

#### [Woodturning](#)

The British woodturning magazine

#### [Wood magazine Forum](#)

Wood Magazine

Q & A on Woodturning

### **Websites**

#### [Woodturning Videos](#)

Excellent woodturning videos

### **Wood Sources**

#### [AustralianBurls](#)

Burls from Australia

#### [Bell Forest](#)

Figured and Exotic woods

#### [Big Monk Lumber](#)

Exotic woods

#### [Century Tree Turnings](#)

Woodturning blanks

#### [Got Wood?](#)

Source of Wood turning blanks from Piedmont area of South Carolina

#### [Hardwoods Incorporated](#)

Specialty Hardwoods



