



# Turn to the News

Volume 1 Issue 12

December 2016

## Highlights

- Elections
- No meetings until April

## Inside this issue:

Presidents Message	1
FIY	2
Library News	3
Activity Calendar	3
Board Contacts	4
About PIW	5
Around the Web	5
Resources	6
Pictures	7
AAW Explore	8

## President's Message

The last meeting for this year was held on December 7, 2016 when the club hosted a Christmas Exchange among the members who chose to participate. This year we had 20 different people participate in the exchange, which, I believe, is a record number. Everyone seemed to be happy with their presents and left with a smile on their faces. Good work everyone; hopefully we will have more next year!

December is also the annual Election of Officers for the Club. There were two positions open: President and Member at Large. Ron Tomasz agreed to run for the M-at-L position some time ago and that left the President's position still open. Since no one appeared to be ready to step up to fill the position, John Fox, Treasurer, gave a brief presentation of what was entailed to disband the club. Basically, it would mean giving all of our assets and treasury to some other club. Some members were under the impression that we would sell off the assets (lathes and other tools) and deposit the proceeds in the treasury that would then be divided among the members. John made it very clear that this would not be the case and that Pennsylvania law clearly spelled out the procedures.

The members agreed that we would simply suspend the club until sometime next year at which time a decision would be made as to whether we would continue. After the gift exchange, I asked if anyone had a change of heart and would agree to run for President to allow the club to continue. Isabel Quayle agreed to take the office for the coming year-- thank you Isabel!

The most pressing need at this point will be demonstrators for the monthly meetings next year. I will do one demo and we need volunteers for the other five open months: I'm hoping to fill these slots at the April meeting so that Isabel doesn't have to worry about filling those spots. Please be willing to volunteer.

January, February, March.....No meeting Scheduled

April

May.....Professional turner, Steve Kennard is scheduled if his Visa problems can be worked out

June

July

August.....No Demo as this is our Annual Picnic

September

October

November

December.....Election of Officers and Christmas Exchange

Also, we still need to think about finding a new location for the meetings. Shorty and his son are willing to continue to work around our meetings, but there will come a point when that will no longer be possible and we need to anticipate and plan for that happening.

***Remember, there are no meetings in January, February and March***



# FYI

## Member Projects

If you have a woodturning project that you would like to showcase to our club members, you can send me detailed information about your project with pictures.

## Classified Ads

Ads for woodturning and woodworking related items are free to members. Send detailed information with pictures.

## Members Questions & Answers

Members are asked to submit woodturning, finishing and tool questions to our resident experts to answer. There are no dumb questions, someone else in the club may have had the same questions.

## Wood to Turn

Do you have wood, need wood or know about wood that is available for turning? Let me know and I'll pass it along.

---

## Classifieds

---

### ***Jet Dust Collector \$550.00***

### ***Remote control (on and off) \$50.00***

***Jet 1 1/2 HP, 1100 CFM, Model # DC1100-A, 120/240 Volt in excellent condition.***

***Originally came with a cloth filter bag, 30 microns but upgraded to a pleated***

***It is pre wired for a 120-volt circuit but can be rewired to a 240 volt if desired.***

***Also available is a remote control to turn on and off the dust collector.***



be



Contact Ron Tomasch ([ronswoodshop@hotmail.com](mailto:ronswoodshop@hotmail.com)) or phone: [216-214-1959](tel:216-214-1959)

## Library News

One of the greater assets of PIW is the extensive library of tapes, DVDs, books, and reference materials available in the club library. If you have not already done so, take a few moments and browse through the

materials. Materials are offered on an honor system.

Please sign the card attached to the desired item and place it in the Library black box.

When you return the item, retrieve the card from the box, cross out your name and place

### Latest Additions

- ◆ See Bill Noce for more information

## PIW Activities calendar

No Meetings January, February and March



### Sanding inside vessels

Sanding inside a vessel with a small opening is challenging. The tool I came up with is a slotted wooden mandrel on a drill extension for holding abrasives, which flap against the inside of the vessel. The mandrel size can vary according to your needs. I cut the slot with a handsaw, as this provides a tight fit for the abrasive, whose grit helps keep it in place.

My drill extensions accept a 1/4" (6mm) shaft, so I used a 1/4" hex-head bolt screwed into a dowel for the wood mandrels. I then sawed off the bolt head and filed a slight flat on the bolt to give the extension set screws a surface to lock onto.

In use, the drill spins the abrasive clockwise, while the lathe turns the vessel counterclockwise. Make sure you position the abrasive in the correct direction so the grit is hitting the inside wood surface. As the end of the abrasive wears, just cut it back for a fresh surface.

—Dennis Ciesielski, Wisconsin



## PIW Board 2015 and Elected Officers

### *President*

Joe Herrmann

[latheturner@windstream.net](mailto:latheturner@windstream.net)

440-563-5785

### *Treasurer &*

### *Club Photographer*

John Fox

[john@johnfox.us](mailto:john@johnfox.us)

814-434-3445

### *In place of Past President*

### *Vice-president*

Don Proctor

[h2opolo@roadrunner.com](mailto:h2opolo@roadrunner.com)

814-449-1902

### *Elected Board Member*

Bill Noce

[nocnoc@zitomedia.net](mailto:nocnoc@zitomedia.net)

440-997-8908

### *Craig McCune*

Secretary

[craig\\_mccune@roadrunner.com](mailto:craig_mccune@roadrunner.com)

814-833-7409

### *Elected Board Member*

Jim Meyer

[blossomandjimbo@adelphia.net](mailto:blossomandjimbo@adelphia.net)

814-474-5106

## Mentor Contacts

Dave Swanson

7279 Rohl Road, North  
East, PA 16428

814-899-5175

Bill Blasic

11291 Lake Pleasant Rd.  
Union City PA 16438

814-796-4609

John Fox:

176 Cambridge Road, Erie, Pa  
16511

814-434-3445

*For new turners and those looking to expand their skills, PIW has established a 'Mentor List' of those members willing to assist in that effort. Please make arrangements directly with anyone on the list for help.*

For contact information updates, including your email or mailing address, please contact Terry at [piwnewsletter@gmail.com](mailto:piwnewsletter@gmail.com)

## AAW Quick Links



## About PIW

Presque Isle Woodturners Inc. is affiliated with the American Association of Woodturners and is organized exclusively for educational purposes with a mission to educate woodturners and the public, in and about the art and craft of woodturning. This is accomplished by encouraging and facilitating training programs for woodturners, disseminating information about sources of material and equipment, exposing the art of woodturning to the general public, and serving as a resource for any group or individual interested in woodturning.

Presque Isle Woodturners was originally organized in 1999 by a small group of individuals with a common interest in woodturning. The PIW has grown to a group of over 50 members and became incorporated as a non-profit organization in 2003.

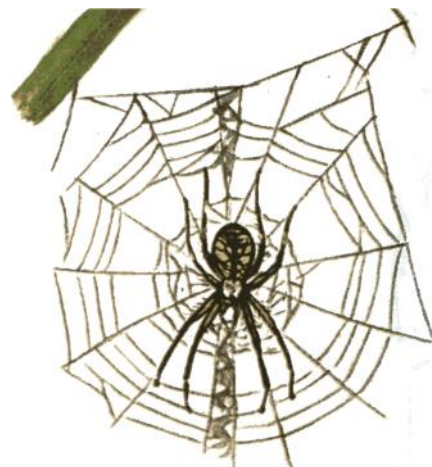
The sharing of experience between members, presentations by invited woodturners of regional and national reputation, and an extensive library of books and videos on the subject of turning are benefits of membership. Topics covered at any meeting may include turning technique, design, safety, finishing methods, and ideas for projects.

Meetings are held the first Wednesday of each month at 2831 West 23rd St. (Behind Parker's Garage) at 6:00 PM. Visitors are welcome any time, join us.

## Site of the Month

### Woodturning Videos

This site hosts hundreds of woodturning videos on just about any subject.



## Woodturning Resources

### **American Association of Woodturners**

Woodturning Association

### **Tools and Supplies**

#### **Bear Tooth Woods**

Specialty pen kits

#### **Best Wood Tools**

Specialized woodturning tools

#### **Craft Supply**

Woodturning Supplies

#### **Craft ID**

Signature medallions

#### **Earth's Watch**

Wooden jewelry and watches

#### **Franck Johannesen Woodturning**

#### **Geiger's Solutions**

Robust Lathes and accessories

#### **Klingspor**

Abrasives and woodturning supplies

#### **Highland Woodworking**

Woodworking tools, supplies

#### **Hunter Tool Systems**

Carbide woodturning tools

#### **Hut Products**

Woodturning tools, supplies

#### **John Jordan Woodturning**

Woodturning tools and more

#### **JT Turning Tools**

Woodturning tools & accessories

### **OneWay Manufacturing**

Lathes and accessories

#### **Packard**

Woodturning Supplies

#### **Peachtree Woodworking**

#### **Supply**

Turning and carving tools, supplies

#### **Penn State**

Woodturning tools, supplies

#### **Rockler**

Woodworking and Hardware

#### **Ron Brown's Best**

Woodturning tools and videos

#### **Sanding Glove**

Abrasives and sanding equipment

#### **SS Niles Bottle Stoppers**

Stainless steel bottle stoppers

#### **Thompson Lathe Tools**

High quality steel woodturning tools

#### **Vinces WoodNWonders**

Sanding products

### **Woodcraft of Atlanta**

Woodworking and Hardware

#### **Woodturners Wonders**

Lathe lamps & CBN wheels

#### **Woodturningz**

Pen kits and woodturning supplies

### **Magazines**

#### **More Woodturning**

Woodturning magazine

#### **Woodturning**

The British woodturning magazine

#### **Wood magazine Forum**

Wood Magazine

Q & A on Woodturning

### **Websites**

#### **Woodturning Videos**

Excellent woodturning videos

### **Wood Sources**

#### **AustralianBurls**

Burls from Australia

#### **Bell Forest**

Figured and Exotic woods

#### **Big Monk Lumber**

Exotic woods

#### **Century Tree Turnings**

Woodturning blanks

#### **Got Wood?**

Source of Wood turning blanks from Piedmont area of South Carolina

#### **Hardwoods Incorporated**

Specialty Hardwoods

*Let me know if you have a favorite site to add to this list.*





Photos by John Fox





## Announcing AAW EXPLORE!

*This email is being sent to all chapter officers.  
We encourage your chapter to share this  
information with all of your members.*

November 30, 2016

Dear Chapter Officer:

### Drum Roll...

The AAW will launch AAW EXPLORE! to members on **December 1**. This new resource makes exploring the most extensive online woodturning library in the world, quick and easy. Whether it's to solve a problem, research a new technique, or start a new woodturning project, AAW members will be only seconds away from getting precisely the information they desire using EXPLORE!



More than 2,500 items currently make up the expanding EXPLORE! collection, including articles from thirty years of the *American Woodturner* journal and AAW's cumulative collection of complementary publications. Nearly everything members want to know about woodturning will be at their fingertips!

The introduction of EXPLORE! is part of AAW's VISION 2020 strategy to continue being the go-to source for all things woodturning. This innovative new member benefit offers easy access to woodturning information in a user-customizable way, and creates a platform for other, upcoming VISION 2020 initiatives.



EXPLORE! is useful resource for turners of all skill levels, and will help support and accelerate the learning process. It also complements AAW VideoSource, an online tool introduced in June 2016 that offers open access to useful woodturning videos pre-screened by the AAW for quality and safety.

### Easy to use!

AAW members will be able to access EXPLORE!, after logging into the AAW website at [woodturner.org](http://woodturner.org), under the "Publications" tab. This state-of-the-art



resource enables members to locate articles and other media on a specific topic with as few as three mouse clicks -- one to select a *Category*, a second to refine the category by *Keyword*, and a third to click the *Search* button and produce a list of article hyperlinks that meet their search criteria. The *Quick Search* may be used to search by any word included in the author's name, article title, or publication section, and sort results by title, author, publication date, or type of media. Additionally, an option to find only articles suitable for beginners may be selected. A diagram of basic EXPLORE! functions can be found at the bottom of this email.

## Designed by Woodturners for Woodturners

EXPLORE! would not have been developed so soon without the dedication, generosity, and expertise of AAW members Dave Mueller and John Kelsey. Dave's software development skills, combined with John's ability to deconstruct and tag thirty years of member publications, have made EXPLORE! an exciting reality.

### Please help us spread the word!

I encourage you to take a look at EXPLORE! and **share this exciting new AAW member benefit with your chapter members**. To help you spread the word, we have created an EXPLORE! ad that [may be downloaded and placed in your chapter newsletter and on your chapter website, click here](#).

Your chapter's support of the AAW at the local level is critical to us all. We urge you to **distribute the AAW membership materials** (sent previously to your chapter) to your members and others who are not yet AAW members. Additional materials are available by calling the AAW office at 651-484-9094 or [via download from our website, click here](#).

Respectfully,



Phil McDonald

# AAW EXPLORE!

## DISCOVER PROJECTS, ARTICLES, TIPS, AND MORE!

Explore AAW's expanding library of more than 2,500 articles and other media.

### EXPLORE! IS A BENEFIT OF FULL AAW MEMBERSHIP.

- Visit the AAW website at woodturner.org and login with your username and password.
- Hover the cursor over the "Publications" tab on the main tool bar and select "AAW EXPLORE!" from the dropdown menu.
- Click the blue "EXPLORE!" button for access.

**1** Click one: "All Content" or "Beginner Content"

**2** Select a "Category" from the dropdown list.

**3** Optional: Refine your selection by selecting a "Keyword" from the dropdown menu.

**4** Click the "Search" button.

**5** Review the search results.

**6** Click the "Globe" icon to go directly to the article (or other media) of your choice.

**Your adventure begins here!**

Author	Title	Link	Year/Duration	File Type
Abe Harper	Determining Bowl Thickness		June 1996	Article
Ron Hampton	Drying Green Bowls		June 1997	Article
John Kelsey, Ted Rasmussen	Project: Turning Your Very First Bowl		August 2014	Article
David Lancaster	Remounting Dry Bowl Blanks		June 1996	Article
David Ellsworth	Roughing Between Centers		December 2015	Article

Records 1 to 5 of 5

Previous Next

This 8 page article includes full color photos and step-by-step instructions for making a bowl.