



A monthly publication of the Presque Isle Woodturners

# Turn to the News

Volume I Issue I

January 2015

## Highlights

- Christmas 2015

## Inside this issue:

<i>Presidents Message</i>	2
<i>FIY</i>	3
<i>Library News</i>	4
<i>Activity Calendar</i>	4
<i>Board Contacts</i>	5
<i>About PIW</i>	6
<i>Around the Web</i>	6
<i>Resources</i>	7
<i>Story of Kroshnasamy</i>	8
<i>Xmas pics</i>	10

## Meeting Notes

After 10 years leading PIW as president, Bill decided to turn the reins over to someone else. Bill's tenure brought us many world class demonstrators, and his work as a mentor provided several of us invaluable lessons. (The lunches were good too!) Bill was presented a lifetime membership for his service. Enjoy your retirement Bill.

At Decembers meeting, Joe Herrmann was elected president and Don Proctor was elected vice president. Joe has been VP for several years, while Don joined last year. The other members of the board remain Craig McCune as secretary, John Fox Treasurer and club photographer, Bill Noce and Jim Meyer as board members. Congrats to the Joe and Don!

Due to low participation, it was decided to drop the Wildwind craft show from next years agenda and look for craft shows closer to home.

Bill Blasic was the highest bidder for the club lathe. He promptly donated it to Sister Audrey as her current lathe is getting on in years. Thanks Bill.

Wednesdays meeting was the annual Christmas exchange. Several members participated. See photos on page 9.

John Fox presented a treasurers report. Total funds are \$6,907.42. Please contact John for more details or if you have any other questions regarding club finances.

If anyone received vacuum chuck parts and didn't reimburse the club, please see John Fox. You owe \$30.00.

## President's Message

On behalf of myself and the entire Board, thank you for placing your confidence in us by electing us as officers of P.I.W for the coming year. We have been meeting regularly to try to come up with ideas that will make the club better for all of us. Along those lines, if you have any suggestions for improvement, please contact one of the Board members: Myself, Don Proctor, Craig McCune, John Fox, Bill Noce or Jim Meier.

One of the things we discussed at the last Board meeting was a survey sheet to try to determine what the members want to see and why they are members of P. I. W. A survey has been attached to this mailing and the Board would appreciate it if you could fill it out and bring it to the next meeting.

One of the things that will be ABSOLUTELY necessary is greater member involvement with club activities: Monthly club demos, participation at hands-on activities and involvement at club sponsored activities in the community. Without increased member involvement, this club will pass on to the big shavings pile in the sky because a handful of members cannot keep the club going; others must get involved.

Club dues are payable at this time. Members who have not paid by the March meeting will be dropped from the membership roster. It takes a lot of time for John to process club dues and we want to get this done as soon as possible at the start of every new year. We will be having a form for all members to fill out so we can update our records. It will either be attached to this newsletter or passed out at the next meeting. We need your information so we can put together an accurate club roster.

We will have two professional demonstrators this year: Glenn Lucas will be here in April and Derek Weidman will be here in July. It should be noted that the club is on the hook for approximately \$2000.00+ per demonstrator and member commitment to attending these hands on sessions is vital for the continued financial health of the club. We will be talking more about both demonstrators at the next meeting.

One of the things that the Board has discussed is developing member committees to help take the burden off the officers in determining the direction of the club. Needless to say, involvement in these committees is vital. Please consider volunteering to join one of the committees when asked.

At the December meeting, the members voted to discontinue involvement in the Wild Winds Craft Show. However, we left open the possibility of replacing that show with another one closer to home. If anyone has any insight into other shows, please see one of the Board members.

One thing we have to discuss at the next meeting is what time to start future meetings. We start at 7:00 now, but officers and others arrive at 5:00 to set up the meeting materials and whatnot. The purpose of getting to the meeting site at 5:00 was to allow folks an opportunity to get help with any turning problems they might have.

In the time I have been a member, I can count on fewer than five occasions where members came forward for assistance. It's been suggested that we start the meeting at 6:00 and be able to finish about 8 to 9:00 P.M. Please give this some thought and be ready with some ideas at the next meeting.

AAW membership has its advantages. I hadn't been on AAW's website for a couple of years, but, I've recently have been researching things for the Board meetings. There is a wealth of information there for those of you who are members.

# FYI

## Member Projects

If you have a woodturning project that you would like to showcase to our club members, you can send me detailed information about your project with pictures.

## Classified Ads

Ads for woodturning and woodworking related items are free to members. Send detailed information with pictures.

## Members Questions & Answers

Members are asked to submit woodturning, finishing and tool questions to our resident experts to answer. There are no dumb questions, someone else in the club may have had the same questions.

## Wood to Turn

Do you have wood, need wood or know about wood that is available for turning? Let me know and I'll pass it along. .

---

## Classifieds

*Please submit all classifieds to [piwnewsletter@gmail.com](mailto:piwnewsletter@gmail.com)*

## Library News

One of the greater assets of PIW is the extensive library of tapes, DVDs, books, and reference materials available in the club library. If you have not already done so, take a few moments and browse through the

materials. Materials are offered on an honor system.

Please sign the card attached to the desired item and place it in the Library black box.

When you return the item, retrieve the card from the box, cross out your name and place

### Latest Additions

- ◆ See Bill Noce for more information

## PIW Activities calendar

Meeting

January 6th

Meeting

February 3rd



### Nail clipper chatter tool

I like the challenge of making my own tools and recently made a chatter tool using a nail clipper handle as the cutter (*Photo a*). I mounted the “blade” in a hacksaw blade holder and used a thumbscrew for easy adjustment. The cutting edge is ground like a scraper.

When you produce chatter on a workpiece, you are actually skip-scraping,

where the tool leaves the wood intermittently and cuts a decorative pattern.

Two key variables are the lathe speed (around 1800 rpm usually works for me) and the amount of blade protruding. Also, chatter work is best done on the endgrain of hardwoods like maple (*Photo b*). You will hear a high-pitched squeal when producing chatter.

This is an easy way to decorate tops, and you can use colored markers to highlight the chatter.  
—John Kaner,  
Alaska



## PIW Board 2015 and Elected Officers

### *President*

Joe Herrmann

[latheturner@windstream.net](mailto:latheturner@windstream.net)

440-563-5785

### *Treasurer &*

### *Club Photographer*

John Fox

[john@johnfox.us](mailto:john@johnfox.us)

814-434-3445

### *In place of Past President*

### *Vice-president*

Don Proctor

[h2opolo@roadrunner.com](mailto:h2opolo@roadrunner.com)

814-449-1902

### *Elected Board Member*

Bill Noce

[nocnoc@zitomedia.net](mailto:nocnoc@zitomedia.net)

440-997-8908

### *Craig McCune*

Secretary

[craig\\_mccune@roadrunner.com](mailto:craig_mccune@roadrunner.com)

814-833-7409

### *Elected Board Member*

Jim Meyer

[blossomandjimbo@adelphia.net](mailto:blossomandjimbo@adelphia.net)

814-474-5106

## Mentor Contacts

Bill Blasic

11291 Lake Pleasant Road,  
Union City, PA 16438

814-796-4609

Dave Swanson

7279 Rohl Road, North East, PA  
16428

814-899-5175

John Fox:

176 Cambridge Road, Erie, Pa  
16511

814-434-3445

*For new turners and those looking to expand their skills, PIW has established a 'Mentor List' of those members willing to assist in that effort. Please make arrangements directly with anyone on the list for help.*

For contact information updates, including your email or mailing address, please contact Terry at [piwnewsletter@gmail.com](mailto:piwnewsletter@gmail.com)



## About PIW

Presque Isle Woodturners Inc. is affiliated with the American Association of Woodturners and is organized exclusively for educational purposes with a mission to educate woodturners and the public, in and about the art and craft of woodturning. This is accomplished by encouraging and facilitating training programs for woodturners, disseminating information about sources of material and equipment, exposing the art of woodturning to the general public, and serving as a resource for any group or individual interested in woodturning.

Presque Isle Woodturners was originally organized in 1999 by a small group of individuals with a common interest in woodturning. The PIW has grown to a group of over 50 members and became incorporated as a non-profit organization in 2003.

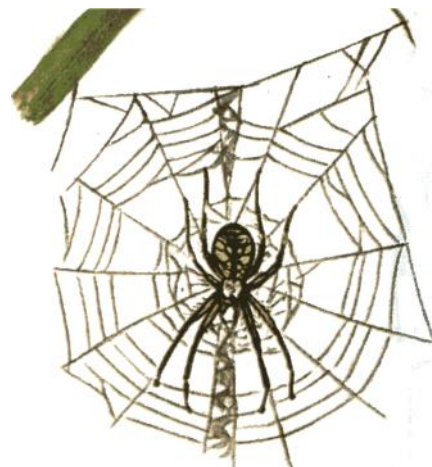
The sharing of experience between members, presentations by invited woodturners of regional and national reputation, and an extensive library of books and videos on the subject of turning are benefits of membership. Topics covered at any meeting may include turning technique, design, safety, finishing methods, and ideas for projects.

Meetings are held the first Wednesday of each month at 2831 West 23rd St. (Behind Parker's Garage) at 7:00 PM. Visitors are welcome any time, join us.

## Site of the Month

### Woodturning Videos

This site hosts hundreds of woodturning videos on just about any subject.



## Woodturning Resources

### **American Association of Woodturners**

Woodturning Association

### **Tools and Supplies**

#### **Bear Tooth Woods**

Specialty pen kits

#### **Best Wood Tools**

Specialized woodturning tools

#### **Craft Supply**

Woodturning Supplies

#### **Craft ID**

Signature medallions

#### **Earth's Watch**

Wooden jewelry and watches

#### **Franck Johannesen Woodturning**

#### **Geiger's Solutions**

Robust Lathes and accessories

#### **Klingspor**

Abrasives and woodturning supplies

#### **Highland Woodworking**

Woodworking tools, supplies

#### **Hunter Tool Systems**

Carbide woodturning tools

#### **Hut Products**

Woodturning tools, supplies

#### **John Jordan Woodturning**

Woodturning tools and more

#### **JT Turning Tools**

Woodturning tools & accessories

### **OneWay Manufacturing**

Lathes and accessories

#### **Packard**

Woodturning Supplies

#### **Peachtree Woodworking**

#### **Supply**

Turning and carving tools, supplies

#### **Penn State**

Woodturning tools, supplies

#### **Rockler**

Woodworking and Hardware

#### **Ron Brown's Best**

Woodturning tools and videos

#### **Sanding Glove**

Abrasives and sanding equipment

#### **SS Niles Bottle Stoppers**

Stainless steel bottle stoppers

#### **Thompson Lathe Tools**

High quality steel woodturning tools

#### **Vinces WoodNWonders**

Sanding products

### **Woodcraft of Atlanta**

Woodworking and Hardware

#### **Woodturners Wonders**

Lathe lamps & CBN wheels

#### **Woodturningz**

Pen kits and woodturning supplies

### **Magazines**

#### **More Woodturning**

Woodturning magazine

#### **Woodturning**

The British woodturning magazine

#### **Wood magazine Forum**

Wood Magazine

Q & A on Woodturning

### **Websites**

#### **Woodturning Videos**

Excellent woodturning videos

### **Wood Sources**

#### **AustralianBurls**

Burls from Australia

#### **Bell Forest**

Figured and Exotic woods

#### **Big Monk Lumber**

Exotic woods

#### **Century Tree Turnings**

Woodturning blanks

#### **Got Wood?**

Source of Wood turning blanks from Piedmont area of South Carolina

#### **Hardwoods Incorporated**

Specialty Hardwoods

*Let me know if you have a favorite site to add to this list.*





## The Story of Krishnasamy

Turners Without Borders (TWB) began as an AAW international outreach to countries where we felt we could foster the growth of turning. I want to tell a story that shows how woodturning can transcend all kinds of borders: language, culture, gender, distance, and more. It can create friendships between people who would never otherwise meet and who have little in common other than that fascinating piece of wood spinning on a lathe.

To fully understand this story, we need to picture what it is like for a hopeful turner in many countries: there is often no machinery store nearby, no tool suppliers, no local network to offer support, no dedicated wood suppliers. Even if he or she can access the Internet to buy international goods, prices for many are prohibitive. I have heard many stories like this, but none more moving than the story of Krishnasamy Muthusamy.

### Correspondence

In late 2014, I received an email from Krishnasamy explaining that he was an amateur turner who had made his own lathe, but he was unable to make a tailstock. He wanted to know if there was some way TWB could help. I was deep in the mountains of China demonstrating on behalf of TWB, so by the time I was able to reply, he wrote to say he had already solved the problem. I was already impressed. A summary of our correspondence since then shows why this gentle and polite man has moved me so much:

*Hi Terry,  
Sorry for bothering,  
now I've access to my*

Some of Krishnasamy's early attempts at turning.



*nephew's metal lathe, so I am confident I can fabricate the tailstock. Thanks for your genuine involvement. I've a passion for the wood lathe and plan to help those who really love woodturning and create a group.*

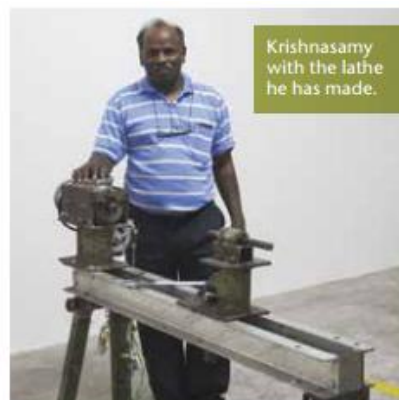
When I asked if there was any other way we could help, he said he had trouble getting a chuck and couldn't make one. I asked what thread size he would need, and he replied: *I'll do any modifications to fit the chuck. I don't follow any standards, as I do it myself with improvised materials.*

Krishnasamy sent me links to videos of traditional turners in India using ancient techniques to craft musical instruments. This excited me very much, as I am always searching for new details of the history of turning. When I told him how much it meant to me to receive such information, he wrote: *I'm really moved by your words. I think we can promote international friendship through woodturning.*

Through this email conversation, I learned that Krishnasamy (58) is an Indian living in Malaysia. He started woodturning in 1979 and continued till 1983 with an improvised lathe. After thirty years without turning, he has built a lathe again. He wrote: *There are no words to explain how I am obsessed with the lathe and turning. To learn more, I had watched many videos on the Internet. I had watched you demonstrate turning to the Chinese and explain what you think about woodturning, but I didn't realise it was you! Friend, nobody could have explained better. Every word you said is perfectly true.*

Inspired by his enthusiasm, I asked Phil McDonald, AAW's Executive Director, to send some American Woodturner journals to Krishnasamy in the hope that they would inspire him further.

I asked him to tell me his full turning story. He wrote: *I have to bring back the sweet memories to tell the full story. I can't explain how happy I was when I first used my lathe. Tears rolled down my face, I was jumping and dancing, and I called my friends to show them.*



I learned that Krishnasamy's father came to Malaysia from India to work on a rubber plantation. There he married and had nine children. During his childhood, Krishnasamy lived in plantation quarters and later worked as a palm-oil harvester (a tough, dangerous job with many injuries and encounters with cobras) while getting his high school education. He continued: *One day, the Government Information Department showed a film to us in an open field. It was about making tops on a pole lathe. I was amazed and it inspired me to build my first basic pole lathe. Unfortunately, it failed. I was undaunted and built another lathe from bicycle parts and powered it with a sewing-machine motor. I turned my first wood and it came out beautifully—I even drew crowds. It sounds crazy, but I hugged and slept with the turned wood!*

*The bicycle parts were not strong enough for longer and larger wood, so I planned to build a workable lathe. I didn't have a job but, with help, was able to raise enough money for a used truck chassis for the lathe bed, a single-phase motor, and bearings. I turned three dining table sets and eight table legs for the estate managers. I built dining sets for my friends free of charge. They are still my best friends.*

*By 2013, I owned power tools like a drill and an angle grinder and had gained enough electrical and mechanical knowledge to build a better lathe. I bought 4" (10cm) galvanised metal for the headstock, and a kind lady gave me 30mm-dia. steel for the shaft. Now I have completed the headstock, toolrest, and tailstock, and the lathe is powered by a washing-machine motor.*



*It's not finished yet, but it works. I can't afford to own turning tools or a chuck, so I use carpentry chisels. I am learning from the AAW magazines you sent, and every day I Google for hours to indulge in woodturning videos.*

*Thank you for your genuine intentions to help me. I'm nobody to you, yet you still want to help me. I believe I'll be your friend forever.*

### **Outreach opportunity**

AAW has already sent Krishnasamy a set of spindle gouges from the Tool Bank (see *Sidebar*) and books on basic turning. But I hope you will agree we have even more to offer. The generosity of AAW members always amazes me, so let's reach out to this gentle man and offer support. Even small donations of money will help, and any equipment, such as a chuck, will be welcome. Maybe an AAW chapter would like to adopt Krishnasamy as their special friend and assist him directly? We will follow his story and let everyone know what he has done with this assistance. If you would like to help, please contact Louis Vadeboncoeur, Chair of TWB, at [louis.vadeboncoeur@gmail.com](mailto:louis.vadeboncoeur@gmail.com). ■

---

—Terry Martin

