



A monthly publication of the Presque Isle Woodturners

# Turn to the News

Volume 3 Issue 2

May 2017

## Highlights

•

## Inside this issue:

Presidents Message	1
PIW Minutes	2
Information	3
Activity Calendar	3
Board Contacts	4
About PIW	5
Around the Web	5
Resources	6
Area Events	7
Pictures	8
Projects	9

## President's Message

I can't believe that it's already May. Thanks to Ron for last month's demo. This month Joe Hermann did our demo. He did a great job. I've seen him do demos at other clubs and they always ask him back. We are so fortunate that he's a member of our club. We have many talented members in our club and it would be great to have them share their wealth of knowledge about wood turning. Please sign up to do a demo.

I have been getting a lot of emails/promotional ads from the AAW (American Association of Woodturners). There is a special deal available for anyone who has never been a member before. If you purchase a one year membership it is half the price of a regular membership (Normally \$60 it's now \$30). It is important to remember that this is for the first year only.

Speaking of AAW, I noticed that the latest Member Profile person is Peggy Schmid who I had the good fortune to meet at a WIT (Women in Turning). She is a fantastic professional turner.

Peggy turns all sorts of things and is a true artist.

I have been noticing that there are many opportunities to find wet wood out there as many trees are falling due to storms. Also, people are doing yard work and trimming their trees and bushes.

As a beginning turner, wet wood is much easier to work with. I have trouble with the dust and wet wood has almost no dust. If you decide you'd like to keep the wood and let it dry and you don't have the sealer to put on the ends, just ask one of the officers about the Anchor Seal the club has available.. If you have too much wood to keep, bring it along with you to share. Of all the clubs Ron and I go to, I have to say that PIW has the most wood shared by members.

Speaking of turning and works of art, it would be really great if starting next month members can bring a sample of their current work to display and share with others. Each member will be given a ticket that they will use to vote on the item they feel is the best and most worthy of an award. There was not enough time to make arrangements with Woodcraft, but hopefully next month we will be able to have the contest with an award for the best of show.

I want to thank the new board members for stepping forward. Our club only exists due to members giving their time and talent. Thank You!!

Also remember to bring new members to the meetings. In this case, more is good.

Isabel

Before the meeting the Board met and one topic discussed and passed was that when a club member does a demo for the club, his/her dues for the following year will be covered by the club.

Isabel began the meeting by thanking Todd Eastman for bringing a lathe back from Bill Blasic's workshop.

If a member of a woodturning club who had never been a member of the AAW could now do so and get a 50% deduction in cost for the first year. This offer includes a subscription to the AAW magazine along with many other informational articles and training videos online. This offer ends on June 30th.

Our VP, Ron T. said that he was still searching for a new place for the club to meet. He had a contact who works at Kraft Lumber (just over the bridge from where we now meet) and thought that the owner might be opened to our meeting in his building. When Ron called his contact he was told the contact no longer worked there. Ron plans to come to Erie early next week to talk to the owner to see if we could use space in his building.

On another note, Ron suggested that all members bring in a piece they had turned for all to see. Members can ask for suggestions about his/her piece. Other members could share and discuss methods they had used and help out with suggestions. Ron also said that a certificate to a woodturning business would be given out as "Best of Show" or perhaps another designation each month.

Dave Swanson introduced his guest, Andy G. from Fredonia.

Joe Herman was our demonstrator and he showed us how to turn a three pointed hemispheric bowl from a 5" square bowl. He also showed us some new tools that are on the market. Joe finished the basic bowl in about 40 minutes. (For some of us, we may be able to do so in about 4 hours).

Joe had recently attended a class with Jimmy Clewes to learn how to do a few different pieces. He brought his finished bowl to show us during the meeting. Joe also turned an 18th. C. flask which is supposed to be waterproof (or some other liquid proof). Thank you Joe for sharing your talents with us.

The raffle brought in \$72.; \$80. in dues were paid and \$96. came in for wax.

The meeting ended at 7:20.

Respectfully submitted,

Audrey Steff

#### **Classified Ads**

Ads for woodturning and woodworking related items are free to members. Send detailed info-

#### **Member Projects**

If you have a woodturning project that you would like to showcase to our club members, you can send me detailed information about your project with pictures.

## Library News

One of the greater assets of PIW is the extensive library of tapes, DVDs, books, and reference materials available in the club library. If you have not already done so, take a few moments and browse through the

materials. Materials are offered on an honor system. Please sign the card attached to the desired item and place it in the Library black box. When you return the item, retrieve the card from the box, cross out your name and place

### Latest Additions

- ◆ See the Todd Eastman for more information

## PIW Activities Calendar

Presenter	Topic/Demonstration
June	
July	
August	Annual Picnic
September	
October	
November	
December	Election of officers

## Treasury Report

Financial update:

Checking: \$2,975.80

Savings: \$3,816.81

If you have any questions about club finances, please give John a call. [814-434-3445](tel:814-434-3445)

## PIW Board 2017 and Elected Officers

<b><i>President</i></b> Isabel Quayle <a href="mailto:isq.piw@gmail.com">isq.piw@gmail.com</a>	<b><i>Vice-President</i></b> Ron Tomasch <a href="mailto:ronswoodshop@hotmail.com">ronswoodshop@hotmail.com</a> <u>216-214-1959</u>	<b><i>Secretary</i></b> Audrey Steff <a href="mailto:asteffosb@hotmail.com">asteffosb@hotmail.com</a> <u>814-899-0614</u>
<b><i>Treasurer &amp; Club Photographer</i></b> John Fox <a href="mailto:john@johnfox.us">john@johnfox.us</a> <u>814-434-3445</u>	<b><i>Elected Board Member</i></b> Sara Peters <a href="mailto:sarabara071260@gmail.com">sarabara071260@gmail.com</a> 814-725-0167	<b><i>Elected Board Member</i></b> Todd Eastman <a href="mailto:eastmanswoodturning@yahoo.com">eastmanswoodturning@yahoo.com</a>
<b><i>Member at Large</i></b> Terry Buetikofer <a href="mailto:tibuet@gmail.com">tibuet@gmail.com</a> <u>814-580-8179</u>		

## Mentor Contacts

*For new turners and those looking to expand their skills, PIW has established a 'Mentor List' of those members willing to assist in that effort. Please make arrangements directly with anyone on the list for help.*

Dave Swanson 7279 Rohl Road, North East, PA 16428 814-899-5175	Bill Blasic 11291 Lake Pleasant Rd. Union City PA 16438 814-796-4609	John Fox 176 Cambridge Road, Erie, Pa 16511 814-434-3445
Ron Tomasch  526 Eastlawn Street Geneva, Ohio 44041  <u>(216) 214-1958</u>		

For contact information updates, including your email or mailing address, please contact Terry at [piwnewsletter@gmail.com](mailto:piwnewsletter@gmail.com)

## AAW Quick Links



## About PIW

Presque Isle Woodturners Inc. is affiliated with the American Association of Woodturners and is organized exclusively for educational purposes with a mission to educate woodturners and the public, in and about the art and craft of woodturning. This is accomplished by encouraging and facilitating training programs for woodturners, disseminating information about sources of material and equipment, exposing the art of woodturning to the general public, and serving as a resource for any group or individual interested in woodturning.

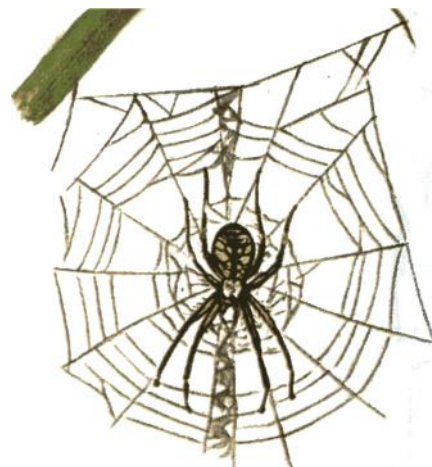
Presque Isle Woodturners was originally organized in 1999 by a small group of individuals with a common interest in woodturning. The PIW has grown to a group of over 50 members and became incorporated as a non-profit organization in 2003.

The sharing of experience between members, presentations by invited woodturners of regional and national reputation, and an extensive library of books and videos on the subject of turning are benefits of membership. Topics covered at any meeting may include turning technique, design, safety, finishing methods, and ideas for projects.

Meetings are held the first Wednesday of each month at 2831 West 23rd St. (Behind Parker's Garage) at 6:00 PM. Visitors are welcome any time, join us.

## Around the Web

**Woodturning** is the craft of using the wood lathe with hand-held tools to cut a shape that is symmetrical around the axis of rotation. Like the potter's wheel, the wood lathe is a simple mechanism which can generate a variety of forms. The operator is known as a turner, and the skills needed to use the tools were traditionally known as turnery. In pre-industrial England, these skills were sufficiently difficult to be known as 'the misterie' of the turners guild. The skills to use the tools by hand, without a fixed point of contact with the wood, distinguish woodturning and the wood lathe from the machinists lathe, or metal-working lathe.



## Woodturning Resources

### **American Association of Woodturners**

Woodturning Association

### **Tools and Supplies**

#### **Bear Tooth Woods**

Specialty pen kits

#### **Best Wood Tools**

Specialized woodturning tools

#### **Craft Supply**

Woodturning Supplies

#### **Craft ID**

Signature medallions

#### **Earth's Watch**

Wooden jewelry and watches

#### **Franck Johannesen Woodturning**

#### **Geiger's Solutions**

Robust Lathes and accessories

#### **Klingspor**

Abrasives and woodturning supplies

#### **Highland Woodworking**

Woodworking tools, supplies

#### **Hunter Tool Systems**

Carbide woodturning tools

#### **Hut Products**

Woodturning tools, supplies

#### **John Jordan Woodturning**

Woodturning tools and more

#### **JT Turning Tools**

Woodturning tools & accessories

### **OneWay Manufacturing**

Lathes and accessories

#### **Packard**

Woodturning Supplies

#### **Peachtree Woodworking**

#### **Supply**

Turning and carving tools, supplies

#### **Penn State**

Woodturning tools, supplies

#### **Rockler**

Woodworking and Hardware

#### **Ron Brown's Best**

Woodturning tools and videos

#### **Sanding Glove**

Abrasives and sanding equipment

#### **SS Niles Bottle Stoppers**

Stainless steel bottle stoppers

#### **Thompson Lathe Tools**

High quality steel woodturning tools

#### **Vinces WoodNWonders**

Sanding products

### **Woodcraft of Atlanta**

Woodworking and Hardware

#### **Woodturners Wonders**

Lathe lamps & CBN wheels

#### **Woodturningz**

Pen kits and woodturning supplies

### **Magazines**

#### **More Woodturning**

Woodturning magazine

#### **Woodturning**

The British woodturning magazine

#### **Wood magazine Forum**

Wood Magazine

Q & A on Woodturning

### **Websites**

#### **Woodturning Videos**

Excellent woodturning videos

### **Wood Sources**

#### **AustralianBurls**

Burls from Australia

#### **Bell Forest**

Figured and Exotic woods

#### **Big Monk Lumber**

Exotic woods

#### **Century Tree Turnings**

Woodturning blanks

#### **Got Wood?**

Source of Wood turning blanks from Piedmont area of South Carolina

#### **Hardwoods Incorporated**

Specialty Hardwoods

*Let me know if you have a favorite site to add to this list.*

# Area Events

Western New York Woodturners I & II are sponsoring an all day demo with nationally known woodturner Beth Ireland. It will be held on Saturday, May 27th from 9-4. Details are on the attached flyer. Advance tickets are \$20 or \$25 if purchased at the door. We would like to invite your members to attend. If anyone contacts me via email prior to Friday, 5/26, tickets will be held in their name at the door for the advance purchase price. Lunch (8" sub, chips, and drink) will be available for \$7. If you have any questions, please contact me by phone or email.

John Lilley

716-662-0370



## *Beth Ireland Woodturning Demo*

**SATURDAY, MAY 27, 2017**

**9AM—4PM**

**Wesleyan Church, 7295 Ellicott Road, Orchard Park**

**TOPICS PRESENTED WILL BE:**

### **Offset Turning Demo**

General overview techniques for offset turning. This demo will show some of the techniques that will be used in the afternoon demo.

### **Sculptural Stringed Instruments from the Lathe**

You do not need to be a musician to create great sounding instruments; you just need to know proper layout and materials. Learn how to create stringed instruments on the lathe. The focus will be on creating the neck of an instrument using offset turning.

**THESE DEMOS ARE GREAT FOR ALL LEVELS OF TURNERS!**

For tickets (\$20 per person) or more information please contact:

John Lilley ~ 662-0370 or [johnlilley2@gmail.com](mailto:johnlilley2@gmail.com)

Linda Bennett ~ 288-9159 or [kevin@kochs.us](mailto:kevin@kochs.us)









## Build a Clamping Press

I have constructed clamping presses of various capacities to help set the inlay into the rims of my bowls, scaling the size of the press to fit the task. A taller press can hold several bowl blanks with platens between each blank. On the other hand, a shorter press will need fewer platens to occupy the space between the top of a turning blank and the bottom of the screw. The press is also handy for gluing up segmented bowl sections. Whatever the size, substantial, structurally sound materials and solid joinery are critical to counter the force of the press screw.

I use 8/4 ash milled to  $1\frac{3}{4}$ " (4cm) for the frame components and Baltic birch plywood or MDF for the base. The posts attach to the feet using mortise-and-tenon joinery, and to the crossbars using half-lap joints. In addition, the screw mechanism requires a dado joint in the center of the crossbars. The press plan (Figure 1) shows the dado dimensions to fit my press screw; be sure to verify the specifications for your own hardware before cutting this joint. A veneer press screw is a good option for this component and can be purchased from many woodworking tool suppliers.

Dry-fit the posts to the crossbar assembly and drill a  $\frac{3}{8}$ " (10mm) hole through the center of each joint to accept carriage bolts, washers, and nuts (Photo a). The press is now ready for gluing and final assembly.

Glue the crossbar-and-post assembly, inserting the carriage bolts and tightening the nuts to clamp the joints. I use additional clamps as needed. Then glue the mortise-and-tenon joints, again clamping until the glue dries. The sheet material base is screwed to the underside of the feet to complete the construction. The final step is attaching the press screw.

A platen helps spread the pressure of the press screw evenly across the surface of the blank and can be made from lumber, MDF, Melamine, or plywood. For my project, I made an X-shaped platen out of some leftover ash. The two pieces are joined with a half-lap joint, with a hole drilled in the center to receive the bottom of the press screw.



A simple press can hold several turning blanks at once, speeding the process of gluing inlay materials.



The crossbar-to-post joint is strengthened with carriage bolts, which also help clamp the joint during assembly.

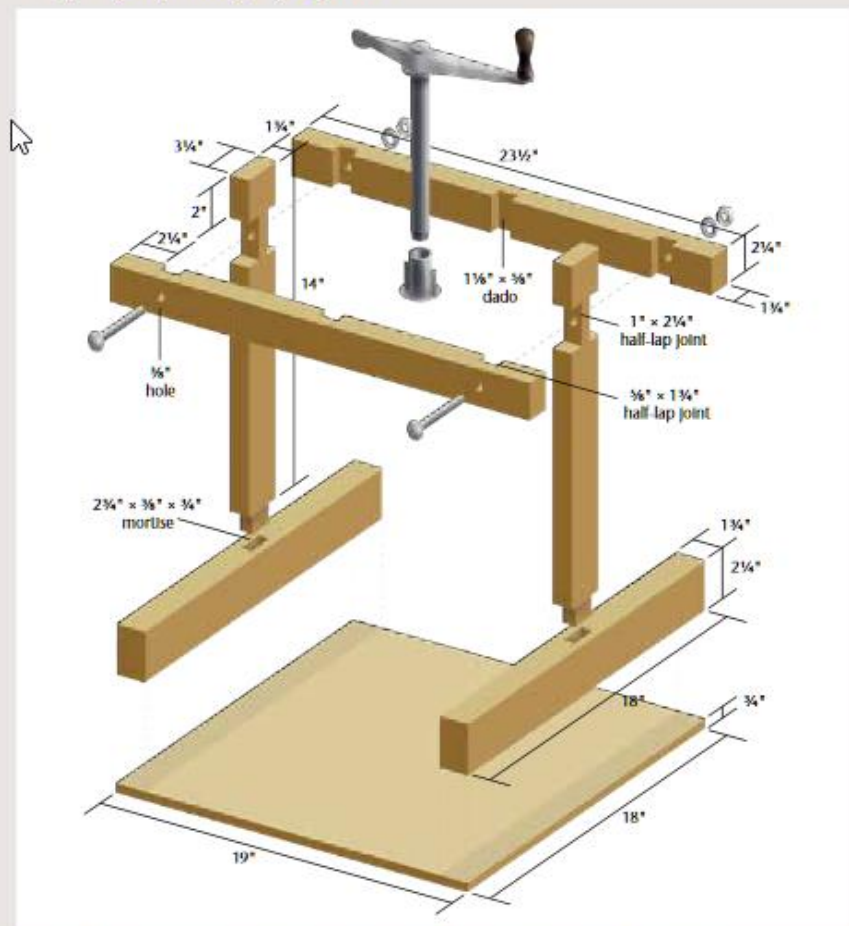


Figure 1. Plans for a shopmade press can be easily scaled to hold varying quantities, diameters, or thicknesses of blanks. Components include two feet, two posts, two horizontal crossbars, a base, and a commercially available press screw.

Illustration by Robin Springett.



# Boxed Homonyms

Sharon Doughtie



*Boxed Homograph, French/English Edition: Pain, 2014, Cherry, paint, 3 1/4" x 3 1/4" x 3 3/4" (10cm x 8cm x 10cm)*

This bilingual box has a loaf of French bread. The French word for bread is *pain*. There is also a painful red thumb with a bandage on it.

The AAW has two grant programs available to all members: The Professional Outreach Program (POP) Fellowship Grant and the Educational Opportunity Grant (EOG). Both offer funding to help woodturners further their educational and creative development. POP's Fellowship Grant is intended to "encourage creative growth, research, or provide inspiration for new directions in turned wood art." The EOG provides funding for educational opportunities and also funds programs that support woodturning education for local chapters, schools, and the wider community.

I was awarded a POP Fellowship in 2009 for a trip to Ireland to visit the land of my ancestors. I intended to examine rockwork, stonework, and architecture. Quotes from my grant application speak to a desire for new influences, beyond Hawai'i, where I live: "I would love to feast my eyes on large vistas and enjoy colors different from Hawai'i's. I would very much like to experience the rough, wild land of Ireland." "It is a balm to the creative soul to have unhurried time to drink in the beauty all around, away from ringing phones and commitments

of day-to-day life." I was looking for fresh inspiration, and I found much in Ireland to inspire my artwork.

Sometimes, however, family commitments thwart plans and intentions. Initially, a death in my family postponed my trip for a year, but during my trip to Ireland in 2010, I was able to visit many of the places I intended to see. Two weeks into my trip, though, I had to rush home for a family medical emergency, which stretched into years. Family took priority.

## Irish humor

Imprinted on my soul, however, was the enjoyment I had had experiencing the wonderful sense of humor that pervades the Irish. In the intervening years, I recalled random laughs with total strangers who had been quick to engage in merriment. I had especially enjoyed listening to the playful repartee between friends.

In 2013, I had the good fortune to return to Ireland to participate in a collaborative event sponsored by AAW's Turners Without Borders, in conjunction with the International Wood Culture Society, in which a group of woodworkers created a dry stone wall—made of wood. While we worked, we

were treated to stories about items that had been found between wall stones, tucked away years ago by passersby: a tobacco pipe, a love letter, a forgotten doll, broken eyeglasses. How intriguing those discoveries must have been! Inspired, we made trinkets to tuck into our wall. (For more on the Irish wall project, see Roger Bennett's June 2014 *AW* article, "Improvisations on the Theme of an Irish Wall" (vol 29, no 3).

Finally returning to fulltime artwork in 2015, I found myself wanting to make looser, more playful pieces. Perhaps the stresses of caregiving needed unwinding—I no longer felt the urge to incorporate knotwork designs and Irish-inspired architectural elements in my work. Instead, the humor and wit of the Irish bubbled to the surface: Little treasures found in stone walls, coupled with my love of wordplay, morphed into a new series I titled *Boxed Homonyms*.

Somewhat circuitously, like the knotwork designs I employ, the POP grant influenced what I make. If you, too, are looking to be influenced or inspired, apply for an EOG or POP grant! Thank you, AAW and POP for helping further my artistic career. ■



*(Left) Boxed Homonyms: Stamp, 2014, Cherry, paint, 4" x 8" x 5" (10cm x 20cm x 13cm)*

This box contains a stamp, a postage stamp, and a little cloud created from a small stamping foot in a Mary Jane shoe.



*(Right) Boxed Homonyms: Rock, 2014, Cherry, paint, 4 1/2" x 7" x 3 3/4" (11cm x 18cm x 10cm)*

Within this box are a cradle that rocks, a rock guitar, and a lava rock.