



# Turn to the News

## Highlights

•

### Inside this issue:

Presidents Message	1
PIW Minutes	2
Information	3
Activity Calendar	3
Board Contacts	4
About PIW	5
Around the Web	5
Resources	6
Area Events	7
Pictures	11

## President's Message

A big **Thank You** to Dave and Nancy Swanson for hosting this years picnic. It was well attended, the food was great, and a good time was had by all. I wish I could have attended; next year for sure!

It's September already. Jamie Donaldson was a great demo. Square turning can be quite exciting. Things have been gearing up and I have less and less time. I find myself feeling blessed that I'm up here in Ohio, because there are many down south in Texas and Florida feeling the effects of hurricanes Irma and Harvey. My mother lives in Florida and was fortunate enough to evacuate to my sister's in North Carolina, but so many were not that fortunate. I know we all know members or fellow friends and woodturners who live or reside in Florida during the course of the year. Perhaps this month we can consider some way of helping out those who have suffered losses from the severe weather conditions. Please keep them in your thoughts and prayers.

Jamie Donaldson was very informative and I learned new woodturning skills. I went to his workshop at NCWT in Cleveland. I was able to successfully turn a couple square bowls. I found that his step by step instruction and positive attitude helped make the process seem easier and more achievable. Since my time to turn is limited, I need all the help I can get.

I would also like to thank all the members who have been contributing to the club. Financial contributions are good, but more recently it has been the contributions of time and effort that has brought the club together and make it grow and thrive. There have been so many donations of time and effort that I know I could never identify and thank all of them. Those who have volunteered to do demos, move to the club equipment to the new venue, help set up at the beginning and ending of meetings, bringing new members and even paying your dues. I'm thankful for all these things and any other act to benefit the club.

One activity you might consider is the woodturning symposium near Cincinnati. The Turning 2017 Regional Symposium will be October 13-15. You can register for Turning 2017, and get full details at the New Event Website [www.Turning2017.com](http://www.Turning2017.com). I have heard from those who have attended in the past that it is a great symposium. Ron Tomasch was planning on attending until he found out the date conflicted with my son's wedding.

I recently received an announcement for a demo with Graeme Priddle and Melissa Engler. They will be in Pittsburgh October 21-23, 21017. There will be additional information attached in the newsletter. I went to the Graeme and Melissa demo in Cleveland. I learned new skills for woodturning, woodburning, and painting the pieces we turn. If you're in the Pittsburgh area, it may be worth it to visit and see the demo on the 21<sup>st</sup> or the classes on the 22<sup>nd</sup> and 23<sup>rd</sup>.

The Board met before the meeting on September 6, 2017. One item was discussed. Usually the raffle money from our annual picnic goes to the Tom Obourn Scholarship Fund. Since that money is rarely used, the Board decided to put in our checking account which then could be used for things that the club may purchase or to pay visiting turners who will present a demo for the club and for other things used by the club.

The Obourn Scholarship fund is for the use of members who may want to attend a class regarding wood turning or go to an AAW sponsored meeting. If approved, the member can receive up to \$250.00 for that purpose.

Ron, our VP, received word from Wood Supply that we will be receiving \$10 gift certificates on a regular basis to WS.

If you would like to win one of these certificates, just bring in something you made for "Show and Tell". Each club member present will receive a ticket to vote on the best piece. The person who received the most tickets will win a certificate. All those who brought in a piece will have a chance to win a certificate in a draw that evening.

Our 50 gallon barrel of wax has "run dry." We buy the wax from a distributor in Buffalo. Presently wax in a catalog runs around \$20 per gallon. We have been buying wax from the club for \$7 a gallon. If someone is willing to go to Buffalo to buy the wax and if someone can store it, it will be a great savings for all concerned. Speak to Dave Swanson for the details.

Jamie Donaldson from Kentucky was our featured demonstrator at the meeting. He showed the members how to turn "wing featured" bowls. He brought several pieces "in the rough" and two beautiful finished pieces.

His presentation was spiced with a sense of humor (good humor).

October's Demo will be by Greg Fera on segmented bowls. His segmented bowls are extremely created.

Audrey

#### **Classified Ads**

Ads for woodturning and woodworking related items are free to members. Send detailed information with pictures.

#### **Member Projects**

If you have a woodturning project that you would like to showcase to our club members, you can send me detailed information about your project with pictures

# Library News

One of the greater assets of PIW is the extensive library of tapes, DVDs, books, and reference materials available in the club library. If you have not already done so, take a few moments and browse through the

materials. Materials are offered on an honor system. Please sign the card attached to the desired item and place it in the Library black box. When you return the item, retrieve the card from the box, cross out your name and place

**Latest Additions**

- ◆ See the Todd Eastman for more information

# PIW Activities Calendar

2017	Presenter	Topic/Demo	2018	Presenter	Topic/Demo
January					
February					
March					
April					
May					
June					
July					
August	Dave/Nancy Swanson	Annual Picnic			
September	Jamie Donaldson				
October	Greg Fera				
November					
December		Election of officers			

# Treasury Report

Financial update:

Checking: \$2,245.03

Savings: \$3,817.45

If you have any questions about club finances, please give John a call. [814-434-3445](tel:814-434-3445)

## PIW Board 2017 and Elected Officers

<p><b>President</b></p> <p>Isabel Quayle  <a href="mailto:isq.piw@gmail.com">isq.piw@gmail.com</a></p>	<p><b>Vice-President</b></p> <p>Ron Tomasch  <a href="mailto:ronswoodshop@hotmail.com">ronswoodshop@hotmail.com</a>  <a href="tel:216-214-1959">216-214-1959</a></p>	<p><b>Secretary</b></p> <p>Audrey Steff  <a href="mailto:asteffosb@hotmail.com">asteffosb@hotmail.com</a>  <a href="tel:814-899-0614">814-899-0614</a></p>
<p><b>Treasurer &amp; Club Photographer</b></p> <p>John Fox  <a href="mailto:john@johnfox.us">john@johnfox.us</a>  <a href="tel:814-434-3445">814-434-3445</a></p>	<p><b>Elected Board Member</b></p> <p>Sara Peters  <a href="mailto:sarabara071260@gmail.com">sarabara071260@gmail.com</a>            814-725-0167</p>	<p><b>Elected Board Member</b></p> <p>Todd Eastman  <a href="mailto:eastmanswoodturning@yahoo.com">eastmanswoodturning@yahoo.com</a></p>
<p><b>Member at Large</b></p> <p>Terry Buetikofer  <a href="mailto:tibuet@gmail.com">tibuet@gmail.com</a>  <a href="tel:814-580-8179">814-580-8179</a></p>		

## Mentor Contacts

*For new turners and those looking to expand their skills, PIW has established a 'Mentor List' of those members willing to assist in that effort. Please make arrangements directly with anyone on the list for help.*

<p>Dave Swanson            7279 Rohl Road, North East, PA 16428            814-899-5175</p>	<p>Bill Blasic            11291 Lake Pleasant Rd.            Union City PA 16438            814-796-4609</p>	<p>John Fox            176 Cambridge Road, Erie, Pa 16511            814-434-3445</p>
<p>Ron Tomasch            526 Eastlawn Street            Geneva, Ohio 44041  <a href="tel:216-214-1959">216-214-1959</a></p>		

For contact information updates, including your email or mailing address, please contact Terry at [piwnewsletter@gmail.com](mailto:piwnewsletter@gmail.com)

## AAW Quick Links



## About PIW

Presque Isle Woodturners (PIW) is a member of the American Association of Woodturners. Our mission is to educate woodturners and the public about the art and craft of woodturning.

We were organized in 1999 and became incorporated as a non-profit organization in 2003.

Dues are \$20 per calendar year and include club meetings, demonstrations from our club or other club members, demonstrations from internationally known woodturners, access to a large library of videos, a mentoring program and an email subscription to our newsletter.

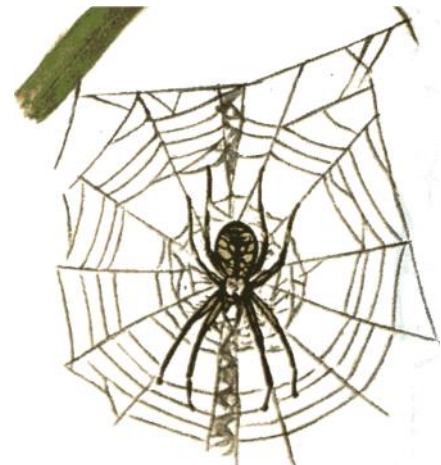
Meetings are held the first Wednesday of the month at **Kraft Lumber 1707 Pennisula Dr.** at 6:00 p.m.. Currently we meet April through July and September through December.

The weather is not always favorable for traveling, so for the safety of our members, we take a winter break January through March. In August we have our annual club picnic. On occasion, we don't meet in July. If you plan to attend a meeting, please contact us to ensure our schedule has not changed.

<http://www.piwturners.com/>

## Around the Web

**Woodturning** is the craft of using the wood [lathe](#) with hand-held tools to cut a shape that is symmetrical around the axis of rotation. Like the [potter's wheel](#), the wood lathe is a simple mechanism which can generate a variety of forms. The operator is known as a turner, and the skills needed to use the tools were traditionally known as turnery. In pre-industrial England, these skills were sufficiently difficult to be known as 'the misterie' of the turners guild. The skills to use the tools by hand, without a fixed point of contact with the wood, distinguish woodturning and the wood lathe from the machinists lathe, or [metal-working lathe](#).



## Woodturning Resources

### [American Association of Woodturners](#)

Woodturning Association

### **Tools and Supplies**

#### [Bear Tooth Woods](#)

Specialty pen kits

#### [Best Wood Tools](#)

Specialized woodturning tools

#### [Craft Supply](#)

Woodturning Supplies

#### [Craft ID](#)

Signature medallions

#### [Geiger's Solutions](#)

Robust Lathes and accessories

#### [Klingspor](#)

Abrasives and woodturning supplies

#### [Highland Woodworking](#)

Woodworking tools, supplies

#### [Hunter Tool Systems](#)

Carbide woodturning tools

#### [Hut Products](#)

Woodturning tools, supplies

#### [John Jordan Woodturning](#)

Woodturning tools and more

#### [JT Turning Tools](#)

Woodturning tools & accessories

### [OneWay Manufacturing](#)

Lathes and accessories

#### [Packard](#)

Woodturning Supplies

#### [Peachtree Woodworking Supply](#)

Turning and carving tools, supplies

#### [Penn State](#)

Woodturning tools, supplies

#### [Rockler](#)

Woodworking and Hardware

#### [Ron Brown's Best](#)

Woodturning tools and videos

#### [Sanding Glove](#)

Abrasives and sanding equipment

#### [SS Niles Bottle Stoppers](#)

Stainless steel bottle stoppers

#### [Thompson Lathe Tools](#)

High quality steel woodturning tools

#### [Vinces WoodNWonders](#)

Sanding products

### [Woodcraft of Atlanta](#)

Woodworking and Hardware

#### [Woodturners Wonders](#)

Lathe lamps & CBN wheels

#### [Woodturningz](#)

Pen kits and woodturning supplies

### **Magazines**

#### [More Woodturning](#)

Woodturning magazine

#### [Woodturning](#)

The British woodturning magazine

#### [Wood magazine Forum](#)

Wood Magazine

Q & A on Woodturning

### **Websites**

#### [Woodturning Videos](#)

Excellent woodturning videos

### **Wood Sources**

#### [AustralianBurls](#)

Burls from Australia

#### [Bell Forest](#)

Figured and Exotic woods

#### [Big Monk Lumber](#)

Exotic woods

#### [Century Tree Turnings](#)

Woodturning blanks

#### [Got Wood?](#)

Source of Wood turning blanks from Piedmont area of South Carolina

#### [Hardwoods Incorporated](#)

Specialty Hardwoods

*Let me know if you have a favorite site to add to this list.*

## Area Events

This is a notice and reminder about the 2nd Mid Atlantic Woodturning Symposium. Our executive committee would like to make a special request to you to please share the following information with your chapter members.

The symposium is a 3 day event with at least 28 rotations. It will be held in Lancaster, PA on October 27, 28, & 29 2017. The discounted rate is \$185 which includes lunch on Saturday and Sunday. A "meet the Demonstrators" session will be held on Friday evening. A limited number of hotel rooms are available at a special reduced rate in the Marriott Lancaster, the site of the event.

We have a terrific lineup of demonstrators including Stuart Batty, Curt Theobald, Cynthia Cardon Gibson, Hans Weissflog, Ashley Harwood, and Avelino Samuel. The rotation schedule will be published soon. We also have numerous vendors coming to display their turning related items at our tradeshow. Our website has links to each of the demonstrators and vendors.

Registration is now open. If you are interested in attending, early registration is highly recommended. Registration will close when all our limited number of seats are sold out.

Please visit our website at <http://www.mawts.com/> for more information. We hope to see you there!

Thank you,

Ron Sheehan, Vice President

**Fall 2017, In Lancaster Pennsylvania**

**Second Annual Woodturning Symposium**

**Friday Evening Oct. 27, Saturday Oct. 28 and Sunday Oct. 29, 2017**

**Join us for a weekend of woodturning demonstrations by internationally recognized turners, a woodturning vendor show and an instant gallery displaying the work of attendees and demonstrators.**

Visit our website for more information [mawts.com](http://mawts.com)

## GRAEME PRIDDLE and MELISSA ENGLER

### Class Title: Turn and Burn

#### one day demonstration and two - one day classes

#### The course description follows:

Have a go at turning and carving small bowls and boat forms and applying surface embellishment using rotary carvers, woodburner detailing and 'branding' and application of acrylic and milk paints.

The course will cover design and influences, safety, basic turning techniques, tool selection and sharpening, wood selection, making woodburner tips and 'brands' (I will cover how to make brands but not the handpieces) and various ways to use them, rotary and hand carving techniques, painting and finishing.

For those that would like to have a set project we will start you on a simple bowl with lots of surface area for embellishing. If you complete this project, you can go on to turn and carve the boat form and embellish it if time permits.

Or if you prefer to concentrate on surface embellishment only you are welcome to bring pre-turned spindles/bowls/vessels/test boards to have a go at the myriad of surface treatments Graeme and Melissa will show in their demonstration.

If you are signing up for either, or both, of these one day classes it is important that you attend the Saturday demonstration to see all the possibilities that you can explore on this class. One day is not very long so best not to expect to go home with a perfectly completed piece, most of Graeme & Melissa's pieces take days, and in some cases weeks, to complete. They suggest you try a little of a lot of different techniques to gain the ideas then spend the time perfecting your skills at home.

For Further Information on Graeme and Melissa and their talents, see: "<http://graemepride.com/>" and "<http://melissaengler.com/>" and the biographical information provided below.

**Location:** The Lower Floor of The Society for Contemporary Craft

[2100 Smallman Street \(Strip District\)](#)

[Pittsburgh PA, 15222](#)

This location is at the northeastern end of a several block long warehouse building. It is diagonally across the corner from St. Stanislaus church located at the intersection of Smallman Street and 21st Street.

Free parking (I hope it is still free at the time of this event) is available directly behind The Society for Contemporary Craft end the building (first drive to the left after you turn off Smallman street).

Go down the exterior steps at the back of the building and enter through the basement door.

**Demonstration:** Saturday, October 21, 2017

Doors open at 9:00 AM (some Turners Anonymous members will start showing up about 8:30)

Coffee, donuts and social time 9:00 to 9:30

Brief Meeting and Introduction of Graeme and Melissa 9:30 to 9:45

Demonstration by Graeme and Melissa: 9:45 to 4:00 p.m.

Cost: \$30.00, Includes coffee, donuts, and lunch

This is a demonstration only, no hands on experience

Total capacity, about 60 people

**Class:** Sunday, October 22, OR Monday October 23 (Each class includes the same material, you may attend either class)

Doors Open at 9:00 AM

Coffee and social time 9:00 to 9:15

Instruction by Graeme and Melissa: 9:15AM to 4:00PM each day

Cost: \$160.00 for the class, turning blanks, and lunch

This is a hands-on wood turning and embellishment class

Total capacity, 8 people in each class

**Each Student Will Be Provided:**

The use of a variable speed lathe, with a 1 inch 8TPI spindle on most lathes

The wood blanks required for the class



**Each Student Should Bring:**

Safety equipment, including a facemask, dust mask, and hearing protection

A 1" x 8TPI 4 Jaw Chuck with 2" and Pin jaws (the Pin jaws are needed for the boat)

Bowl gouges, a small detail gouge, a small skew, a parting tool, and small hollowing tools for making the boat (hollowing through a 1 inch opening)

Carving tools – Mastercarver Micro-Pro, Foredom, Dremel, hand tools or whatever carving gear you have

A mini-arbortech or Proxon carver or angle grinder with coarse (36gr) sanding disc or similar

Power sanding equipment and selection of sandpaper for finishing

Pyrography equipment, Burnmaster or Colewood Detailer are recommended

Long nosed pliers and small flat blade screwdriver.

Finishing oil, no toxic sprays or finishes please.

Masking tape

A selection of good quality artist's acrylic/milk paint and brushes. If you do not have your own paints and do not want to buy before you try, Graeme and Melissa will have their paints available for student use for a fee of \$5.

Pencil, eraser, steel ruler, paper

Note: The carving, sanding, and pyrography equipment may be sharable as all students may not be at the same stage of completion at the same time. Graeme will also have their equipment available for student use.

They will also have a range of rotary carving burs, wood burner handpieces/tips/wire and high powered 'Vaporizer' wood-burners available for sale. **For Additional Information, Please Contact:**

Glen Nickodemus, Phone: [814-421-0911](tel:814-421-0911), Email: [ghnick@comcast.net](mailto:ghnick@comcast.net)

Denny Kearney, Phone: [412-965-4341](tel:412-965-4341), Email: [d.kearney@verizon.net](mailto:d.kearney@verizon.net)

**To Reserve a Place** in the Demonstration or One of the Class Sessions see us at the September meeting or send a deposit to:

Bill Hayes - [411 Meadow Lane, Edgeworth, PA 15143](mailto:wjhayes@comcast.net) - Email: [wjhayes@comcast.net](mailto:wjhayes@comcast.net)

Dave Betler – [265 Stevens Road, Utica, PA 16362](mailto:dabetler@gmail.com) – Email: [dabetler@gmail.com](mailto:dabetler@gmail.com)

Thanks so much,

Dave Dudney  
Pittsburgh Woodturners

+ 10% off Sorby Pro Edge Sharpening

To view an online version of this email, click [here](#).  
To ensure delivery to your inbox, please add [mail@woodturnerscatalog.com](mailto:mail@woodturnerscatalog.com) to your address book.



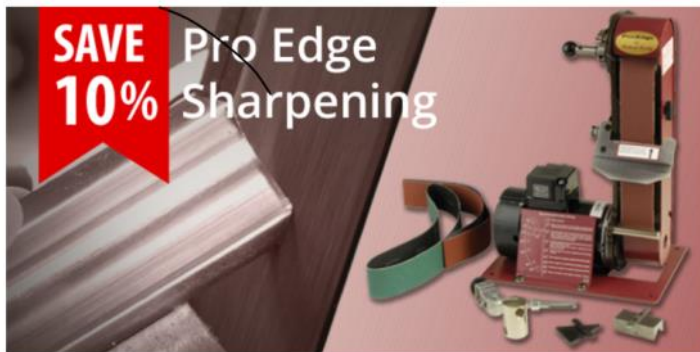
**SALE!** *Robert Sorby* SHEFFIELD ENGLAND **Now through Sept. 30, 2017**



**20% OFF Robert Sorby Turning Tools**

Take advantage of the year's lowest pricing on Robert Sorby turning tools. Now through September 30, 2017.

[Shop Now](#)



**10% OFF Robert Sorby Pro Edge Grinder & Accessories**

A small-scale version of the grinders used in the Robert Sorby factory. Now through September 30, 2017.

[Shop Now](#)



**25% OFF**  
Jr. Gentlemen's II Pen Kits

\*Additional quantity discounts do not apply.

Craft Supplies USA | 202 West 112th Street, Des Moines, IA 50315 | 1-800-551-8876 | [www.woodturnerscatalog.com](http://www.woodturnerscatalog.com)

To customize your email settings, please [click here](#).

You may also adjust your settings by calling us at 1-800-551-8876

See our [Privacy and Security Statement](#)

[Click here to unsubscribe](#)

© 2017 Craft Supplies USA. All rights reserved



[Photos by John Fox Photography](#)