



esyte

Product Catalog

Esyte Company LLC
Indianapolis, IN
Phone: 317-809-0828
Fax: 317-807-6116
www.Esyte.net



Index:

Magnetic Products

Inspection Mirrors

Multi-Tools

Pliers

Knives

Endoscopes

Metal Gauge

Infrared Thermometer



Magnetic Products

Telescopic Pick-Up Magnets

Part Number: E-PU-30

Description: Magnetic telescoping pick-up tool with LED light in middle of pick-up magnet to find parts hidden in the dark corners. Magnet can pick up to 5 lbs. 6 inches closed and extends to 14-3/4". Rubberized comfort no-slip grip. Twist magnet head to turn light on and off. 4 – LR44 batteries included.



Part Number: E-PU-12

Description: Telescopic magnetic pick-up tool. Rubberized comfort no-slip grip. The magnet can pick up to 16 lbs. Telescopic from 7-3/8" to 30".



Part Number: E-PU-13

Description: Lighted magnetic pick-up tool. LED light in the middle of the pick-up magnet to find part hidden in the dark corners. Flexible and sturdy shaft to get around objects. Magnet can pick up to 5 lbs. Twist magnet head to turn light on and off. 4 – LR44 batteries included.





Magnetic Products

Telescopic 4 Piece Pick-Up & Inspection Kit

Part Number: E-PU-31

Description: 4 piece Magnetic telescoping pick-up tool kit with inspection mirror. Rubberized comfort no-slip grip on both handles.

- 1 – 5 Lb. Fixed head magnet
- 1 – 8 Lb. Fixed head magnet
- 1 – 8 Lb. Swivel head magnet
- 1 - 2" Round inspection Mirror





esyte

Magnetic Products

Magnetic Assistants

Part Number: E6028

Description: Magnetic MIG torch holder. A powerful 2-3/4" magnet secures to your workbench, welding table or welding machine to keep your MIG gun secure when not in use. It works in vertical or horizontal positions.



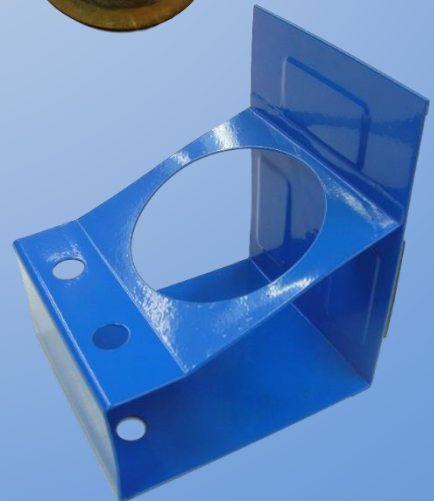
Part Number: E6600

Description: Magnetic TIG torch holder. A powerful 2-3/4" magnet secures to your workbench, welding table or welding machine to keep your TIG gun secure when not in use. It works in vertical or horizontal positions.



Part Number: E7071

Description: This magnetic can holder is ideal for keeping your anti-spatter, spray galv, crack test or energy drink close by as you work. Three rubber coated magnets won't scratch the surface adhered to. The can slot is 3" in diameter and can hold up to 3-1/4" lbs.

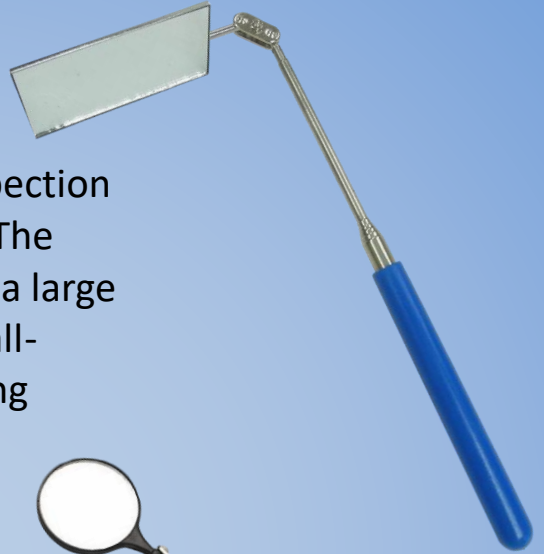




Inspection Mirrors

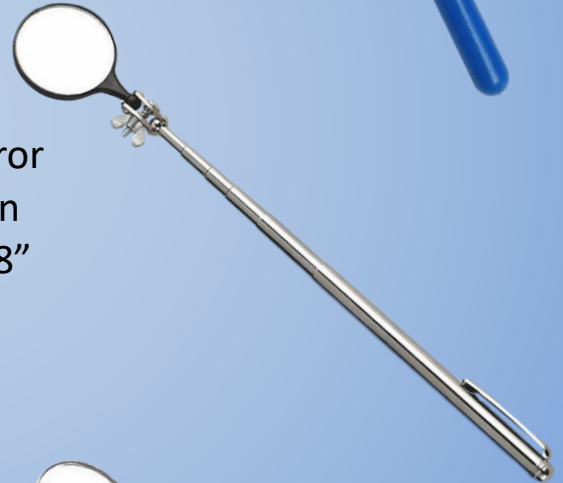
Part Number: E-IM-05

Description: A rectangular telescopic inspection mirror that extends out to 38" (from 11"). The inspection mirror measures 2" x 3-1/2" for a large viewing area. At the end of the shaft is an all-position joint allowing a full range of viewing positions.



Part Number: E-IM-06

Description: This telescopic inspection mirror has a 1-1/4" round mirror with an all-position joint to see in the tight spaces. IM-06 is 6-7/8" when closed and extends out to 19-3/4".



Part Number: E-IM-01

Description: 3-in1 Toolkit. Kit includes 2 round inspection mirrors: 1-1/2" and 2" in diameter and a 1-1/2 lb. magnetic pick-up tool. IM-01 is 9" closed and 20-1/4" fully extended. This 3-in1 toolkit is ideal for every toolbox.





Multi-Tools

Part Number: Y001

Description: 6-in-1 Pocket-size Multi-tool. All tools are stainless steel construction. Y001 is lightweight and compact in size.: 2" long x 1-3/16" wide x 1/4" high (51mm x 30mm x 6.5mm) and 2 oz. (57 grams). Multi-tool consists of: pliers, wire cutter, screwdriver, Phillip's-head screwdriver, steel file and a knife. Comes with black bag and key ring.



esyte

Multi-Tools

Part Number: Y015

Description: Everyone needs the ultimate Multi-Tool! Y015 is made from blackened stainless steel is 4" x2" closed and 6-1/2" x 2-1/2" open.

E-Y015 Multi-Tool Features:

- Needle nose Pliers
- Regulator pliers
- Wire Cutter
- Knife – straight edge
- Can Opener
- Phillips Screwdriver
- File
- Serrated Saw
- Bottle Opener
- Screwdriver
- 1/8" socket for accessories
- Screwdriver Set includes
 - #1,#2 – Phillips heads
 - 7/5/3mm Screwdriver heads
 - 6/4/3mm hexagonal screwdriver
 - 1 – Joint Sleeve





Esyte Pliers

Lifetime Warranty!

Part Number: E-CPLIER

Description: 8" Combination Pliers, 1-7/16" max. jaw capacity, heat treated to keep cutting edges sharp. Drop forged machined steel construction with polished surface. Double-injected soft no-slip grip handles.



Part Number: E-DPLIER

Description: 8" Diagonal Pliers, heat treated to keep cutting edges sharp, precision milled jaws, drop forged machined steel construction with polished surface. Double-injected soft no-slip grip handles.



Part Number: E-LNPLIER

Description: 8" Long Nose Pliers with thin jaws to assure a tight grip and heat treated to keep cutting edges sharp. Drop forged machined steel construction with polished surface. Double-injected soft no-slip grip handles.





esyte

Knives

Part Number: CCknife

Description: Credit card size folding knife. Surgical 420 Stainless steel blade with 2-1/2" cutting edge. Ultra thin (2mm) and ultra light . There's a protective hand guard to assure your grip and a built in safety sheath to prevent accidental opening.

3-7/16" long x 2-1/8" wide
folded

5-5/8" long x 1-3/8" wide
with knife out





esyte

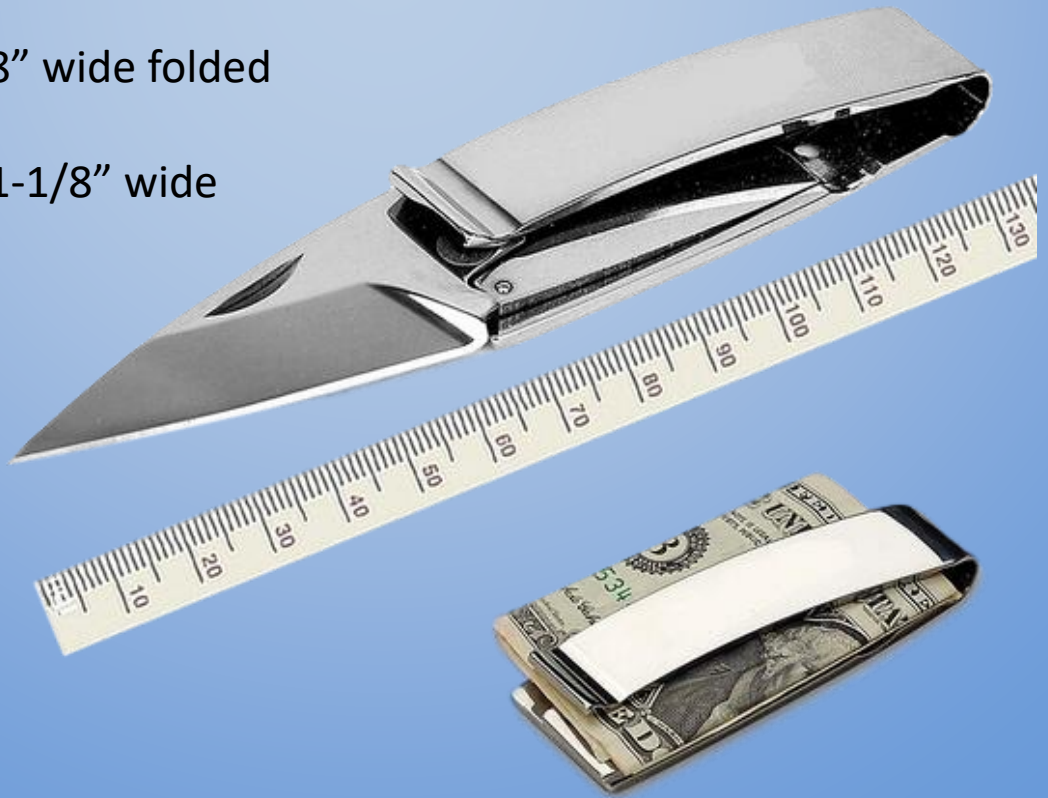
Knives

Part Number: E-WSC16

Description: Money Clip pocket knife is made from 440C Stainless Steel with a hardness rating of 56HRC. The unique locking mechanism keeps the blade from closing. Blade and Clip Body are polished to a mirror finish.

3" long x 1-1/8" wide folded

5-1/8" long x 1-1/8" wide
with knife out



esyte

Endoscopes

Part Number: ES-AD

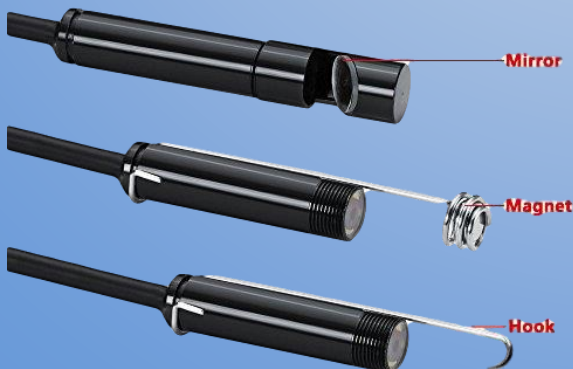
Description: Endoscope inspection camera for Android devices and personal computers. Now you can inspect and explore hard to reach areas! The Esyte Endoscope is waterproof and produces videos and pictures. Ideal for underwater camera, waterproof Micro-cameras, motor vehicle detector, sewer pipeline detector, weld inspections, boiler inspections, HVAC, petroleum drilling industries, construction, archaeological detect, home DIY, aviation and space industries, etc.

Specifications:

- Lens Diameter: 7mm
- Resolution: 640*480
- Focal Distance: 6cm
- Sensor Size: 1/9 inch
- Frame Rate: 30fps
- View Angle: 66 degree
- Photo Format: JPEG
- Video Format: AVI
- 6 Waterproof Adjustable LED Lights
- 3 foot Long USB cable
- Power Supply: 5V DC via USB
- Support OS Windows XP/Windows 7/ Vista/Win 8 or Android 4.0+

Package Includes:

- Mini Android USB Endoscope
- Small Hook Attachment
- Magnet Attachment
- Mirror Attachment (for 90° viewing)
- CD Driver
- Micro to USB Line
- Manual



esyte

Endoscopes/Borescopes

Part Number: ES-WIFI

Description: Wi-Fi Endoscope waterproof inspection camera for iPhone, iPad, Android, IOS, Cell Phone, Tablet, PC, Laptop devices. Now you can inspect and explore hard to reach areas! The Esyte Wi-Fi Endoscope is waterproof and produces videos and pictures. Ideal for weld inspections, boiler inspections, plumbers, mechanics, HVAC, and all trades.

Specifications:

- 2.0 Mega Pixel Camera supports 720P HD video output
- Lens Diameter: 8mm
- Resolution: 640*480
- Focal Distance: 4-10cm
- Sensor Size: 1/5 inch
- Frame Rate: 30fps
- View Angle: 70 degree
- Transmission Distance: 15 – 90 feet
- Photo Format: JPEG
- Video Format: AVI
- 6 Waterproof Adjustable LED Lights
- 3 foot Long USB cable
- Power Supply: Built in battery
- Input: 5V DC via USB
- Support OS Windows XP/Windows 7/ Vista/Win 8 or Android 4.0+

Package Includes:

- Wi-Fi Transmitter
- USB Endoscope Camera
- Hook Attachment
- Magnet Attachment
- Mirror Attachment (for 90° viewing)
- Suction Cup
- Manual



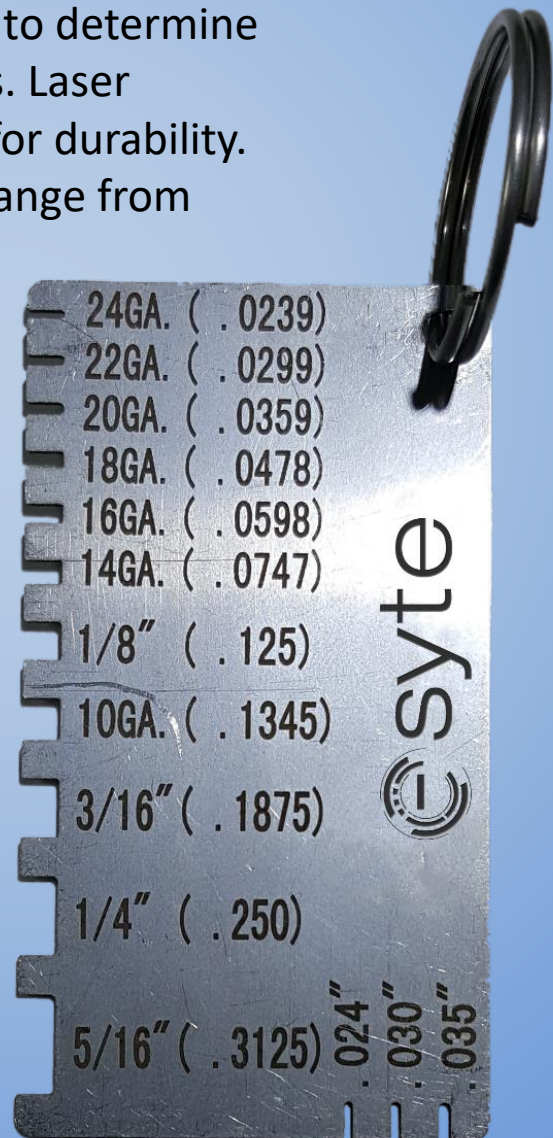


Metal Gauge

Part Number: E-MG

Description: stainless steel gage to determine your material and wire thickness. Laser etched measurement markings for durability. Keyring is included. Measuring range from 0.0239" to 0.3125".

2-3/4" long x 1-1/2" wide





Infrared Thermometer

Part Number: DT8850H

Description: Now an easy to use infrared thermometer with a digital readout. The IT-10 is designed for industrial applications with a range of -58°F to 1562°F (-50°C to 850°C).



Specifications:

- Dual Laser and optical focus for best accuracy
- Accuracy $\pm 2\%$ or 2°C
- Distance Spot Ratio: 16:1
- Emissivity Adjustable: 0.1 – 1.0
- Response Time Wavelength 500ms
- Repeatability $\pm 1\%$ or $\pm 1^{\circ}\text{C}$
- Resolution: 0.1°C or F
- Celsius or Fahrenheit selection
- Max Temperature Measurement
- Data Hold Function
- Laser Target Selection
- Backlight Display
- Auto Power Shut Off
- Low Battery Indicator
- Power: 1 – 9V DC Battery