

## HRP-Rabbit Anti-rat IgG Polyclonal Antibody

### Product Information

<b>Catalog Number:</b>	<b>C3009</b>
<b>Size:</b>	0.2 ml; 0.5 ml
<b>Concentration:</b>	0.5 mg/ml
<b>Storage Buffer:</b>	Phosphate buffered saline, pH 7.4; 0.5% BSA; 0.045% Proclin 300; 50% glycerol
<b>Isotype:</b>	Rabbit IgG
<b>Specific reactivity:</b>	Rat IgG

### Description

The anti-rat IgG antibodies were purified from sera derived from rat IgG-immunized rabbits; purified IgG was conjugated with HRP under optimal conditions. It reacts with both heavy chain and light chain of rat IgG.

### Storage

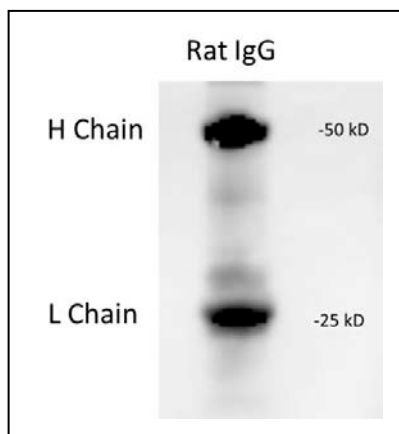
Store undiluted at 4°C or -20°C and protected from prolonged exposure to light. Stable for at least 12 months at 4°C from date of receipt.

### Application

Recommended concentration is 1: 10,000 to 40,000 for Western Blot, 1: 20,000 to 80,000 for ELISA and 1: 200 to 2000 for immunohistochemical staining. The optimal concentration depends on experimental condition and the sensitivity of substrate used. It should be determined by titration for each individual assay of interest.

### Product Data

#### Western Western Bolotting using HRP-rabbit anti-rat IgG antibody (Cat#: C3009)



Proteins loading: rat IgG (2 µg/lane)

SDS PAGE:

12% gel

Western Blotting:

HRP labelled rabbit anti-rat IgG H chain polyclona  
antibody at 1:40,000

Substrate:

SuperSignal™ West Femto Maximum Sensitivity Substrate

## Immune Century

For research use only. Not for diagnostic use. Immune Century products may not be transferred to third parties, resold, modified for resale, or used to manufacture commercial products, reverse engineer functionally similar materials, or to provide a service to third parties without written approval of Immune Century.