

Mouse Anti-Chicken IgY Heavy Chain Monoclonal Antibody

Product Information

Catalog Number:	A10001
Size:	200 µg; 500 µg
Concentration:	500 µg/ml
Storage Buffer:	Phosphate buffered saline, pH 7.4; 0.01% sodium azide; 0.5% BSA
Isotype:	Mouse IgG1, κ
Specific reactivity:	Chicken IgY heavy chain
Cross reactivity:	No reaction with Ig from human, monkey, goat, rabbit, rat, mouse and hamster

Description

Antibodies were generated from B hybridoma raised by fusion between SP2/0 cells and spleen cells from chicken IgY-immunized BALB/c mice and purified from the hybridoma-derived ascites.

Storage

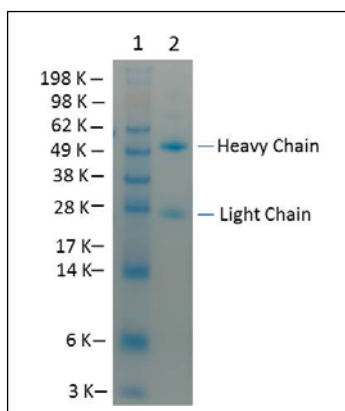
Store at -20°C. Stable for at least 12 months at -20°C.

Application

Recommended to be used for Western Blot, immunofluorescence staining (IF), enzyme-linked immunosorbent assay (ELISA), flow cytometric staining. The optimal concentration should be determined by titration for each individual assay of interest.

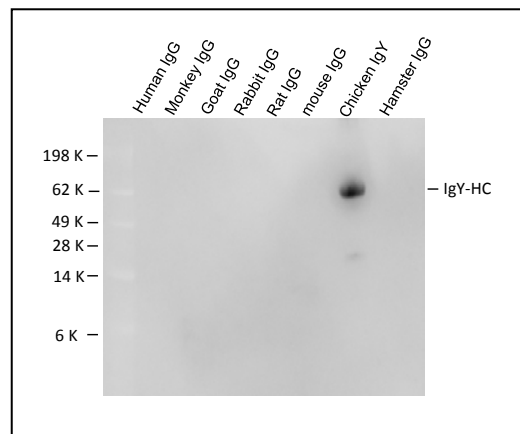
Product Data

Coomassie Blue Staining



The purified anti-chicken IgY monoclonal antibody was separated on 12% SDS-PAGE. The gel was stained with Coomassie Blue R250. Lane 1, SeeBlue Plus2 Pre-Stained Standard (Thermo Fisher Scientific); lane 2, mouse anti-chicken IgY heavy chain monoclonal antibody.

Specificity of anti-chicken IgY monoclonal antibody



The specificity of the antibody was determined by western blotting. The Igs (5 µg/lane) from different species was separated on 12% SDS PAGE and blotted with HRP-mouse anti-chicken IgY H chain monoclonal antibody (Cat#: C3001).

Immune Century

For research use only. Not for diagnostic use. Immune Century products may not be transferred to third parties, resold, modified for resale, or used to manufacture commercial products, reverse engineer functionally similar materials, or to provide a service to third parties without written approval of Immune Century.