

Mouse Anti-Rabbit IgG Heavy Chain Monoclonal Antibody

Product Information

Catalog Number:	A10002
Size:	100 µg; 200 µg
Concentration:	500 µg/ml
Storage Buffer:	Phosphate buffered saline, pH 7.4; 0.01% sodium azide; 0.5% BSA
Isotype:	Mouse IgG2b, κ
Specific reactivity:	Rabbit IgG heavy chain
Cross reactivity:	No reaction with Ig from human, monkey, goat, rat, mouse, hamster and chicken

Description

Antibodies were generated from B hybridoma raised by fusion between SP2/0 cells and spleen cells from rabbit IgG-immunized BALB/c mice and purified from the hybridoma-derived ascites.

Storage

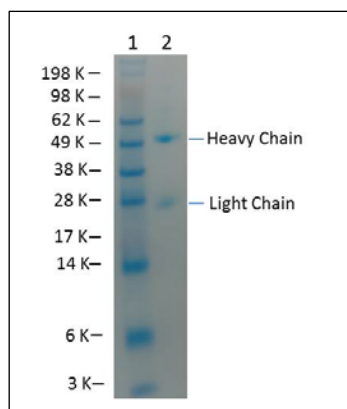
Store at -20°C. Stable for at least 12 months at -20°C.

Application

Recommended to be used for Western Blot, immunofluorescence staining (IF), enzyme-linked immunosorbent assay (ELISA), flow cytometric staining. The optimal concentration should be determined by titration for each individual assay of interest.

Product Data

Gel Staining of the Purified Anti-Rabbit IgG heavy Chain Monoclonal Antibody



The purified anti-rabbit IgG monoclonal antibody was separated on 12% SDS-PAGE. The gel was stained with Coomassie Blue R250.

Lane 1, SeeBlue Plus2 Pre-Stained Standard (Thermo Fisher Scientific).

Lane 2, mouse anti-rabbit IgG heavy chain monoclonal antibody.

Immune Century

For research use only. Not for diagnostic use. Immune Century products may not be transferred to third parties, resold, modified for resale, or used to manufacture commercial products, reverse engineer functionally similar materials, or to provide a service to third parties without written approval of Immune Century.