

## HRP-Mouse Anti-Chicken IgY, Monoclonal Antibody

### Product Information

<b>Catalog Number:</b>	<b>C3001</b>
<b>Size:</b>	0.2 ml; 0.5 ml; 50 µl
<b>Concentration:</b>	0.5 mg/ml
<b>Storage Buffer:</b>	Phosphate buffered saline, pH 7.4; 0.5% BSA; 0.045% Proclin 300; 50% glycerol
<b>Isotype:</b>	Mouse IgG1, κ
<b>Specific reactivity:</b>	Chicken IgY heavy chain
<b>Cross reactivity:</b>	No reaction with Ig from human, monkey, goat, rabbit, rat, mouse and hamster

### Description

Antibodies were generated from B hybridoma raised by fusion between SP2/0 cells and spleen cells from chicken IgY-immunized BALB/c mice; purified IgG was conjugated with HRP under optimal conditions.

### Storage

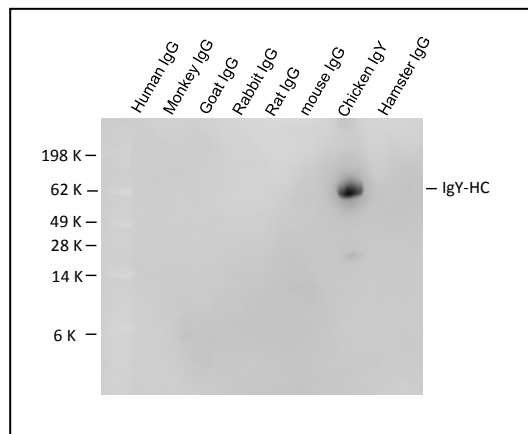
Store undiluted at 4°C or -20°C and protected from prolonged exposure to light. Stable for at least 12 months at 4°C from date of receipt.

### Application

Recommended concentration is 1: 5,000 to 40,000 for Western Blot, 1: 5,000 to 160,000 for ELISA and 1: 200 to 1000 for immunohistochemical staining. The optimal concentration depends on experimental condition and the sensitivity of substrate used. It should be determined by titration for each individual assay of interest.

### Product Data

#### Specificity of HRP-mouse anti-chicken IgY monoclonal antibody



#### Proteins loading (5 µg/lane):

Lane 1: human IgG; lane 2: monkey IgG; lane 3: Goat IgG; lane 4: rabbit IgG; lane 5: rat IgG; lane 6: mouse IgG; lane 7: chicken IgY; lane 8: hamster IgG. 5 µg/lane

#### SDS PAGE:

12% gel

#### Western Blotting:

HRP-mouse anti-chicken IgY H chain monoclonal antibody at 1:20000

#### Substrate:

SuperSignal West Pico Chemiluminescent Substrate

## Immune Century

For research use only. Not for diagnostic use. Immune Century products may not be transferred to third parties, resold, modified for resale, or used to manufacture commercial products, reverse engineer functionally similar materials, or to provide a service to third parties without written approval of Immune Century.