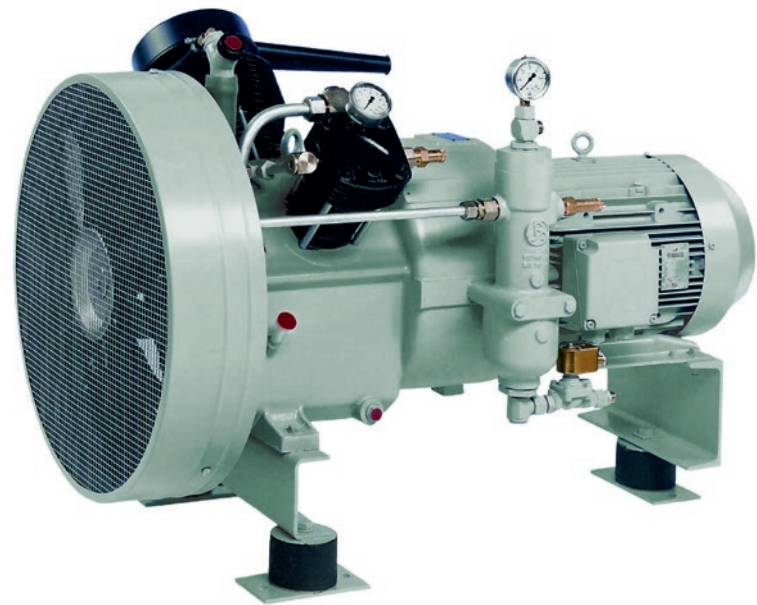




Sauer Compressors

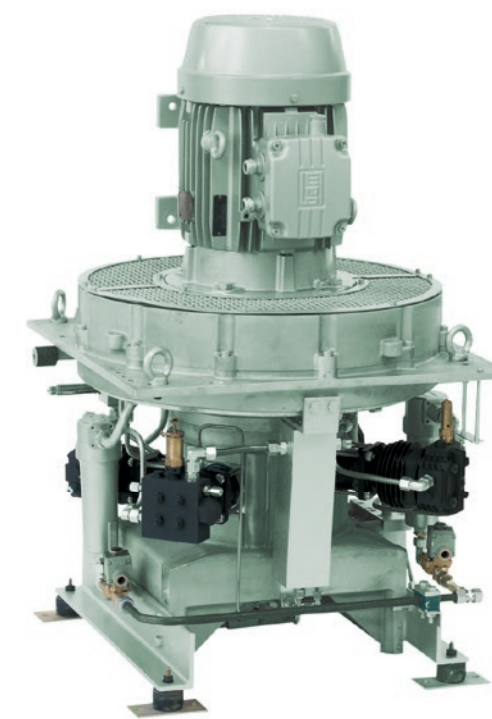
Compressor Range

//// Mistral



Pressure: 8–40 bar(g)
Rated Power: 3–15 kW
Media: Air, Nitrogen

//// Tornado



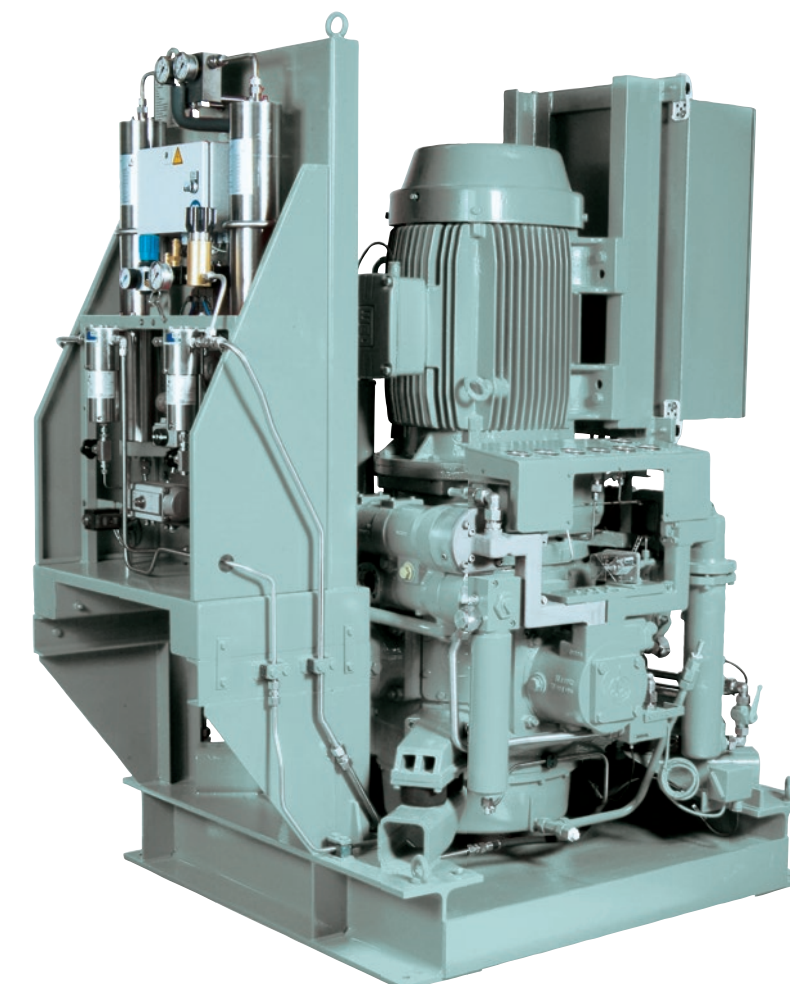
Pressure: 50–420 bar(g)
Rated Power: 5.5–11 kW
Media: Air, Nitrogen, Helium,
Natural Gas, Nitrox, Heliox

//// Passat



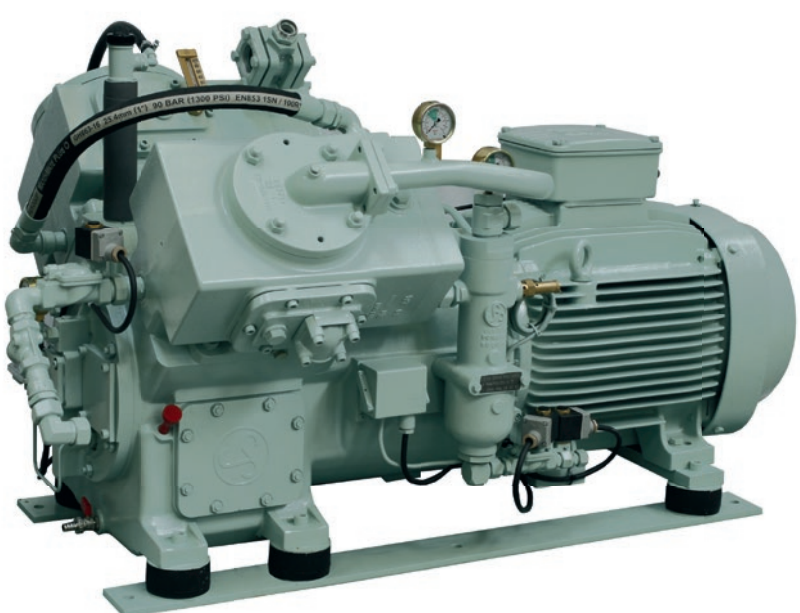
Pressure: 10–80 bar(g)
Rated Power: 15–72 kW
Media: Air, Nitrogen, Helium,
Natural Gas, Hydrogen

//// 5000 series



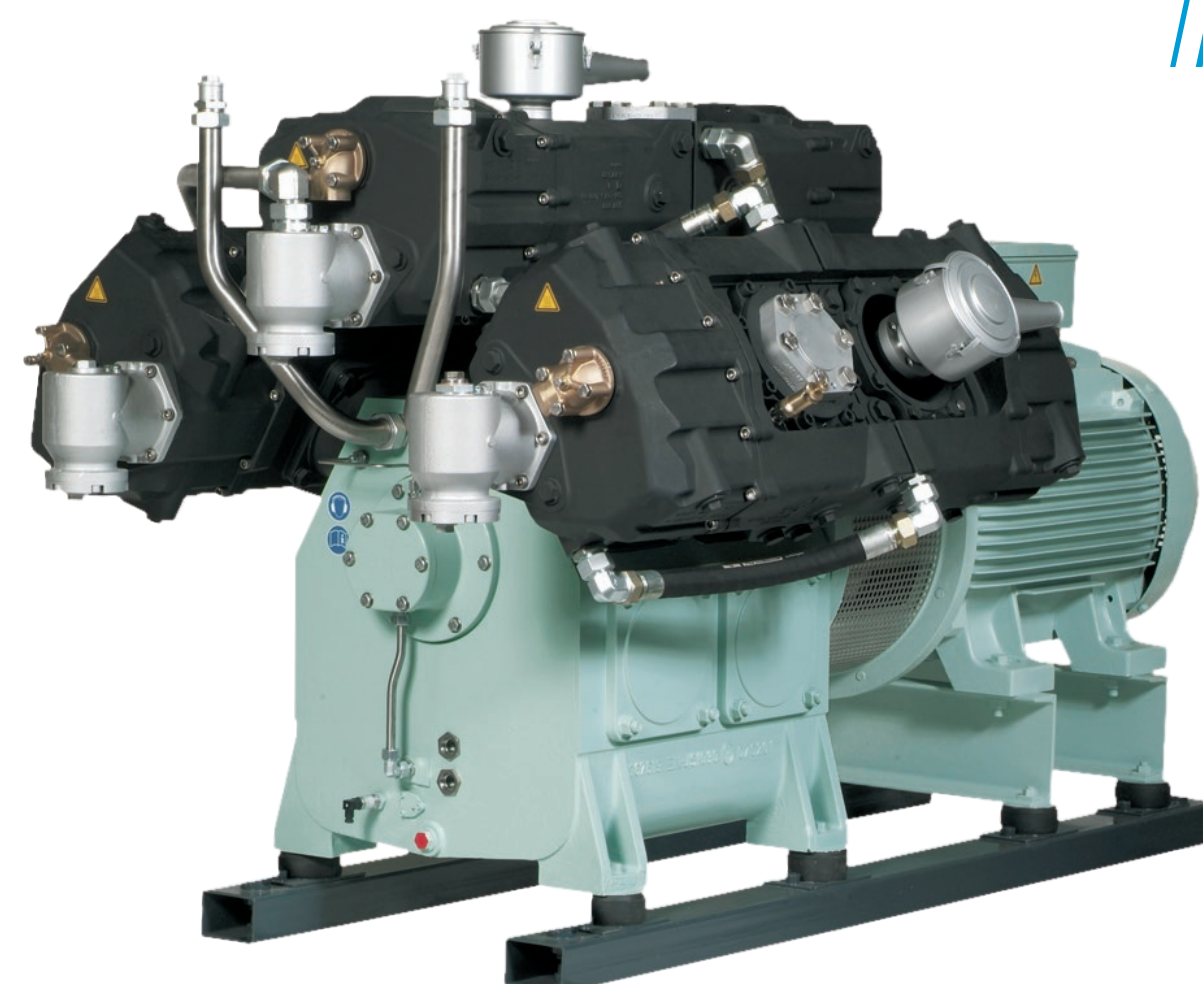
Pressure: 50–400 bar(g)
Rated Power: 22–55 kW
Media: Air, Nitrogen

//// Typhoon



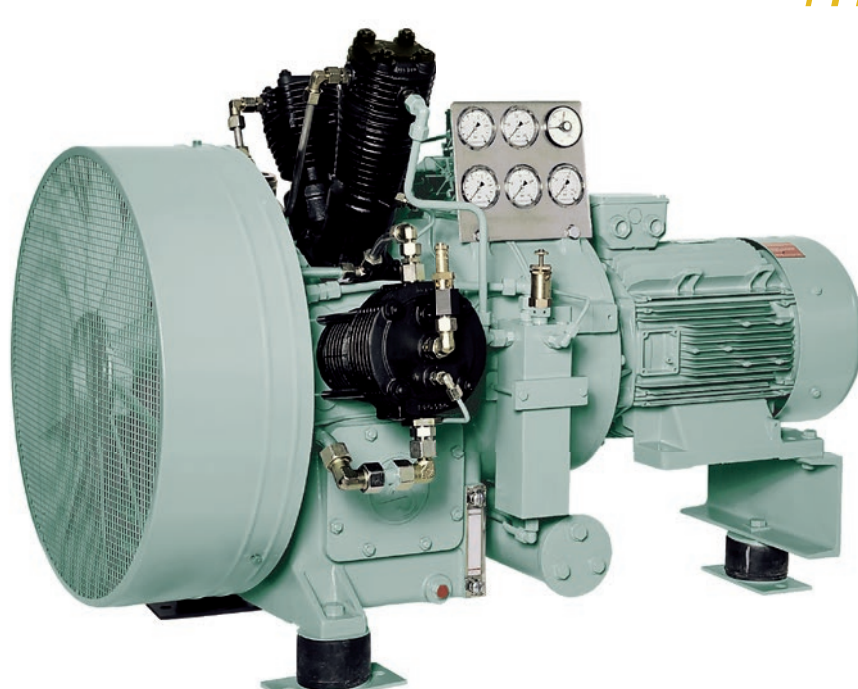
Pressure: 10–100 bar(g)
Rated Power: 15–75 kW
Media: Air, Nitrogen

//// 6000 series



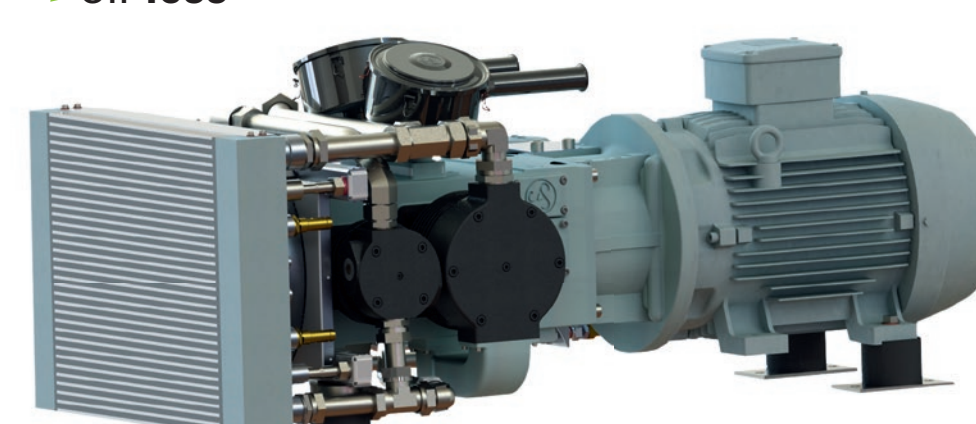
Pressure: 16–500 bar(g)
Rated Power: 90–200 kW
Media: Air, Nitrogen, Helium,
Natural Gas, Bio-methane

//// Hurricane



Pressure: 50–400 bar(g)
Rated Power: 11–45 kW
Media: Air, Nitrogen, Helium,
Natural Gas, Bio-methane,
Nitrox, Heliox

//// Harmattan



Pressure: 5–15 bar(g)
Rated Power: 11–37 kW
Media: Air, Nitrogen

Dependable up to 500 bar – anywhere, anytime.