

KENT POLICE DEPARTMENT

319 SOUTH WATER STREET KENT, OHIO 44240
330-673-7732

MICHELLE A. LEE
Chief of Police

TO: City Manager David Ruller
Mayor Jerry Fiala
Kent City Council

FROM: Chief Michelle A. Lee

SUBJECT: Kent Police Department 2011 Annual Report

DATE: February 8, 2012

On behalf of the members of the Kent Police Department, I am pleased to present you with our 2011 Annual Report. This report is intended to provide the Kent community with a greater insight of the programs, activities and accomplishments of their police department.

One of the biggest challenges we faced in 2011 was the changes of personnel in the command staff. The retirements of Chief Peach and two (2) Lieutenants translated into eight (8) promotions and three (3) new hires to fill the vacancies. There were other lateral position changes within the structure as well which in all required a great deal of internal communication and collaboration to ensure our high professional standards of police service didn't suffer.

The Police Department was focused on raising the bar on service oriented methods and programs to better serve the community. You will find a number of law enforcement initiatives and community services introduced in 2011. These sustainable services should prove to be effective tools in crime prevention and improving community relations. We are committed to being innovative and open minded in all aspects where improvements can be made in providing valuable police services.

Consistent with state and national trends, the City of Kent experienced a decrease in most of the reported major eight (8) crimes, accidents and overall calls for service. Reviewing the ten (10) Year Crime Index is the more accurate reflection of "crime trends" in the City of Kent. A decrease in the crime index and an increase in our clearance rate reflect a successful year in law enforcement.

Respectfully submitted,

Michelle A. Lee
Chief of Police



COMPILED BY ROSEMARIE MOSHER

MISSION STATEMENT

The mission of the Kent Police Department is to serve and protect the persons and property in the City of Kent in accordance with the United States and the State of Ohio Constitutions, and the federal, state and locals laws and ordinances;

To instill the feeling of safety and security in the minds of the people in the City of Kent;

To be responsive to the citizens of Kent and government;

And to cooperate with the various governmental agencies, not restricted to Kent, when such cooperation is desirable and/or necessary to provide for the safety of the Kent area.

This mission is to be accomplished by maintaining the highest ethical standards of conduct, by safeguarding citizens' rights, by applying the law with consistency, and by treating the public with dignity, respect and courtesy.

VALUES STATEMENT

We, the members of the City of Kent Police Department, believe our service to the community is driven by values. These values determine how our mission, goals, and objectives will be achieved. We will:

- ▶ Be responsible and accountable to the citizens of the city of Kent, from which we derive our authority. Each member of our agency will also be responsible and accountable to the organization and its members for living and acting in accordance to our values;
- ▶ Take pride in our profession, yet remain humble by the awesome responsibility and authority accorded to us by the citizens of Kent;
- ▶ Maintain the highest levels of integrity in all our actions by ethically performing our duties within the spirit and the letter of our laws and Constitution;
- ▶ Foster a sense of family, teamwork, and partnership among all members of the department, between police and other city departments, and between the police department and the community;
- ▶ Remain loyal to our profession, our organization, and our community. We will demonstrate our loyalty by our commitment and dedication to excellence and innovation in providing service to the community;
- ▶ Remain sensitive to human needs and always treat each person with fairness, dignity and respect; and
- ▶ Through our devotion to duty, make a difference in the lives of those with whom we interact each day.

TABLE OF CONTENTS

| | |
|---|----|
| 2011 ACCOMPLISHMENTS | 6 |
| 2011 PROGRAMS | 8 |
| DEPARTMENT ORGANIZATIONAL STRUCTURE | 10 |
| ADMINISTRATIVE RESPONSIBILITIES..... | 11 |
| TRAINING SUMMARY..... | 12 |
| EMPLOYEE RECOGNITION | 14 |
| GENERAL OPERATIONAL DATA | 16 |
| TRAFFIC ACCIDENT INFORMATION..... | 17 |
| CRIME TRENDS AND CLEARANCES | 18 |
| 10 YEAR CRIME INDEX AND STATISTICS | 19 |
| ENFORCEMENT STATISTICS..... | 20 |
| TRAFFIC CITATION TYPE | 21 |
| CALLS FOR SERVICE | 22 |
| ADULT ARRESTS | 24 |
| JUVENILE ARRESTS..... | 27 |
| PROPERTY BY TYPE AND VALUE | 28 |
| PROPERTY STOLEN BY CLASSIFICATION | 29 |
| NUMBER OF OFFENSES | 30 |
| ARSONS..... | 31 |
| OFFICERS KILLED OR ASSAULTED | 32 |

2011 ACCOMPLISHMENTS

Dog Kennel

The city Dog Kennel was relocated from Plum St. to 1220 Mogadore Rd. in May. The Kennel is maintained by Kent Police personnel but primarily the compliance officer. The new kennel has three secure indoor/outdoor runs, heating, lighting, running water and sanitary drainage. The kennel can accommodate up to 6 (six) dogs at any given time. In 2011 94 (ninety-four) dogs were impounded, 67 (sixty-seven) were returned to their owner, 13 (thirteen) were adopted back into the community, 13 (thirteen) were taken to the county dog pound and 1 (one) was stolen from the old kennel. In 2011, we realized a reduction of 103 fewer animal nuisance calls compared to 2010. This is in part due to stricter licensing, cooperative efforts within the department and public awareness.

Citizens Police Academy

The inaugural Citizens Police Academy was held in the fall and consisted of a 12 week course. Students were instructed in patrol tactics, investigation techniques, police equipment and participated in a ride-along to name a few topics. 19 (nineteen) Kent area residents participated in the program meant to educate and garner community relations and debunk common misperceptions about police work. This program was well received and is slated for a second class in 2012. This program was funded by a JAG Recovery Act Grant.

New Cruisers

8 (eight) new 2010 Chevrolet Caprice cruisers were purchased and outfitted for our patrol division. The department opted to purchase the Caprice's which out performed other police makes and packages in nationwide tests. The black and white design, LED lighting and reflective markings are all meant to enhance officer presence and improve visibility. 1 (one) new Chevrolet Tahoe was also purchased to complete the fleet. The Tahoe was also rated as an outstanding Sport Utility Vehicle. This 4 wheel drive vehicle was imperative to the fleet as an emergency response unit for heavy snow or other conditions rendering cruisers unresponsive.

Website

Our new website launched in August at kentpd.org. The site is meant to assist the community in providing police department contact information, to answer Frequently asked Questions and present public relations materials. The site is informative, educational and an easy portal between the community and police department.

Terrorism Liaison Officer

Our department joined Region 5's Law Enforcement Ohio Homeland Security's Task Force in April. Being a task force member provides us with up to date information on Homeland Security issues on the state and federal level, fusion center access, advanced training opportunities and funded equipment. We have one officer assigned part-time as our TLO (Terrorism Liaison Officer) who is responsible for information sharing with officers. Equipment such as a "License Plate Reader" has been acquired through this program. The LPR can scan thousands of license plates daily and alert the officer of arrest warrants, stolen vehicles, dangerous persons, etc. The LPR is designed to enhance enforcement efforts and increase officer safety.

K.P.C.A.

The Kent Police Citizens Association found new life in 2011 with new officers at the helm. The KPCA is a non-profit organization whose mission is to enrich the Kent area community through police support. Over \$1200.00 was given to various sports teams, organizations and other fund raising events throughout the year to benefit the Kent community. Annually, a scholarship of \$500.00 is awarded to a deserving RHS graduating senior who is involved in their community.

KPCA, in partnership with Walgreen's, conducted a prosperous "Fill-A-Cruiser" program to benefit local needy families. 22 (twenty-two) families and 47 (forty-seven) children were provided gifts and food. KPCA donated over \$500.00 as well.

3rd Grade Seatbelt Campaign

This program is sponsored by the Ohio Department of Public Safety and is designed to educate 3rd graders on the importance of safety belts. Dayshift officers gave the instruction to all 3rd grade students in the Kent School District.

Presentations, Discussions and Demonstrations

The department is active in seeking out opportunities to interact with many community groups on a variety of topics:

- A presentation was given at Tree City Preschool, the Looking Glass Daycare Center and St. Joseph's Preschool on the topic of safety for those age groups.
- A speaking engagement at Kent State University was given to Education Students on overcoming obstacles for success in your chosen profession.
- The Sunshine laws and Open Records Act was discussed and explained at KPD to KSU Communications, Journalism and Media classes.
- A safety presentation was given to the employees of the entire Land-O-Lakes staff.
- A presentation to a KSU Criminal Justice Class on a variety of Police Officer topics.
- A presentation to KSU Technology students on "Social Impacts of Technology".
- Presentations to the Lions, Rotary and Kiwanis Clubs.
- A department tour and presentation to the League of Women Voters as well as area Boy Scout Troops.
- Numerous K9 demonstrations to area clubs and organizations from our K9 staff.
- Personal Safety was the topic given to teen girls at the High School.

2011 PROGRAMS

APARTMENT MANAGER MEETINGS Meetings were conducted with apartment managers to discuss problems being experienced at their complexes, and to provide ideas how to resolve those problems. There are approximately fifty (50) apartment complexes located throughout the city and Police Administration has weekly contact with managers from many of the larger complexes.

NEIGHBORHOOD WATCH MEETINGS There are two (2) active neighborhood watches in the city and several other neighborhood associations. Meetings, often initiated by residents, identify issues of concern and safety. The police department provided insight and guidance to residents on how to improve the safety and security in their neighborhoods.

NORTHERN OHIO VIOLENT FUGITIVE TASK FORCE (NOVFTF) Under the direction of the U. S. Marshal's Office, this multi-jurisdictional agency, represented by federal, state and local law enforcement agencies, search for and apprehend dangerous felons and fugitives who are located in the jurisdictions of the participating agencies. Two (2) officers are assigned part-time to this organization which has been instrumental in the apprehension of Kent area fugitives. The officers were involved in over one hundred three (103) total arrests; thirty-three (33) arrests were associated with the City of Kent. Officers also participated in four (4) Portage County Warrant sweeps, one (1) county domestic violence sweep and one (1) county sex offender verification sweep.

U.S. DEPARTMENT OF JUSTICE ANTI-TERRORISM TASK FORCE (ATTF) Under the direction of U.S. Attorney of the Northern District of Ohio, this multi-jurisdictional agency coordinates the dissemination of information and development of investigative and prosecutorial strategy in dealing with terrorism. The Task Force acts as a conduit for intelligence information about suspected terrorist activity, which is shared by participating federal, state and local agencies. One (1) officer is assigned part-time to this organization.

PORTAGE COUNTY DRUG TASK FORCE Under the direction of the Portage County Sheriff, this multi-jurisdictional agency investigates and apprehends offenders involved in the trafficking, distribution, and possession of illegal drugs within the communities of participating agencies. Membership includes the Portage County Sheriff's Office, the Portage County Prosecutor's Office, and the Kent, Aurora, Windham, and Garrettsville police departments. Each agency has at least one (1) full time officer assigned to the Task Force.

METRO SWAT This highly trained, professional multi-jurisdictional special weapons team responds to incidents within the jurisdictions of participating members that require special weapons and tactics to deal with riotous activity, large crowd control, barricaded suspects, and execution of drug warrants, arrest of dangerous felons, and the rescue of hostages or endangered persons. The organization is comprised of twenty (20) Summit/ Portage County law enforcement agencies. The Kent community has needed the assistance of Metro SWAT on five (5) occasions in 2011. Metro SWAT, with the assistance of Kent PD and other member agencies acquired a factory reconditioned Lenco Bearcat armored vehicle. This vehicle is an invaluable tool in providing for the safety of citizens and officers during critical incidents. The cooperative efforts of member agencies made it possible to obtain the Bearcat at considerable cost savings over a comparable new vehicle. There are three Kent officers assigned part-time to the team.

JUVENILE UNIT'S DIVERSION PROGRAM Under the direction of Juvenile Counselor Jeff Langstaff, the Diversion Program in 2011 processed seventy (48) juveniles through the program. The program provides first time offenders with an alternative process from entering the county's juvenile justice system for a non-serious criminal offense.

The Juvenile Unit Diversion Program included the following activities in 2011:

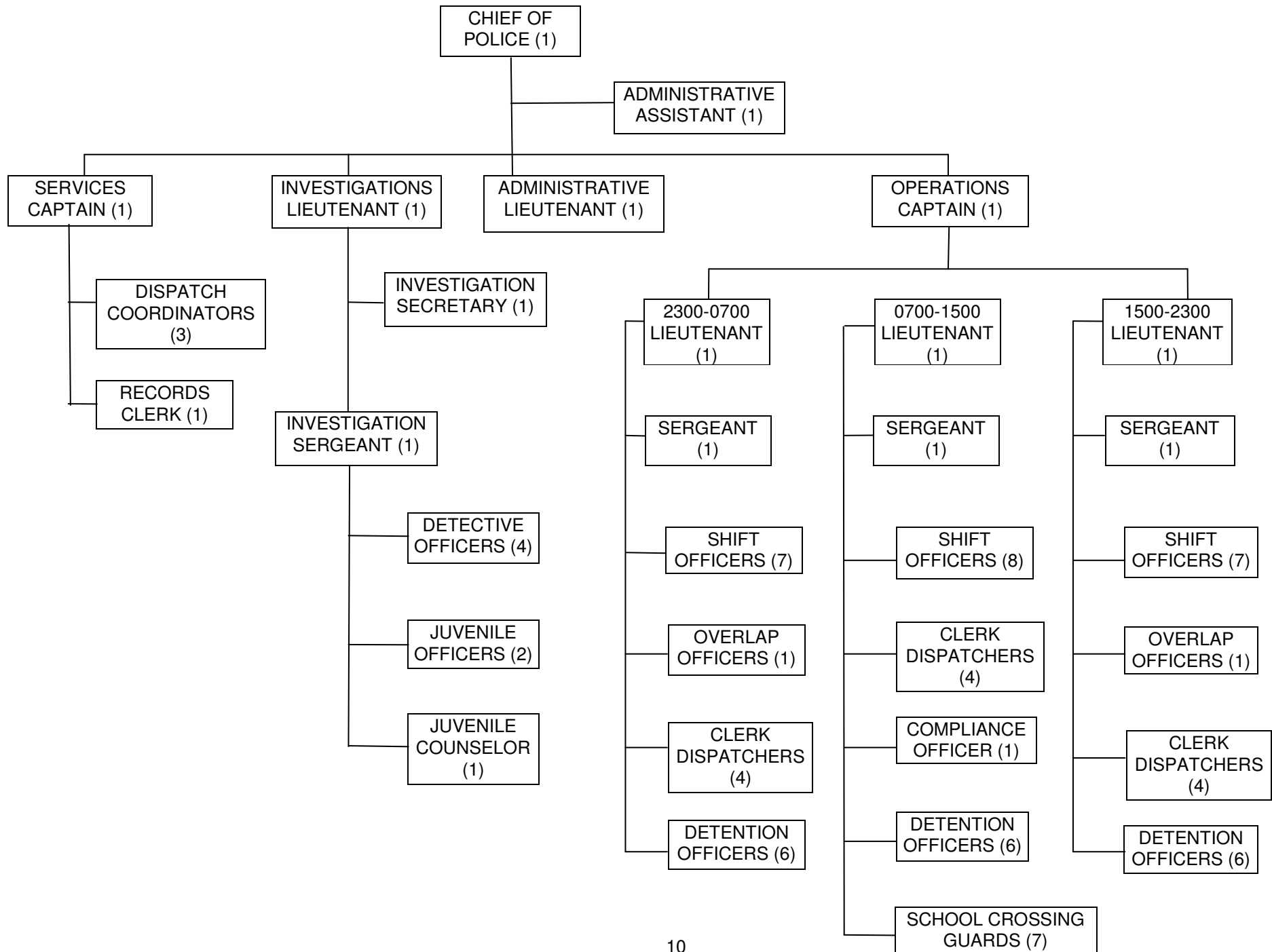
- 160 Mediation/ Problem-Solving Contacts
- 50 Drug/ Alcohol Interventions
- 145 Parental/ Family Consultations
- 14 Juveniles providing community service through the Diversion program.
Community service averages 24 hours per juvenile.
- 120 Child/ Adolescent Mental Health Interventions
- 115 Adult Mental Health Interventions
- 24 Public Speaking Engagements
- 60 Internet & Safety Concern Issues

There was a continuing effort of staff from Kent Schools, Kent State University and the Kent Police Department in working with Healthy Kent, formerly the Behavioral Review Initiatives Committee (alcohol, drugs, and mental health). The focus of which has changed to realign the approach of coordination between campus and the Greater Kent Community. In addition, we are involved with "Parents that Host lose the Most" and "None for Under 21". These are prevention programs that address the issues of adolescent alcohol use.

Involvement continued with the crisis intervention stress management process, both with city employees and staff in the Kent School District. This involvement included training as well as actually utilizing the debriefing/diffusing model. We continued to participate and develop Crisis Intervention Team Training (CIT and CITEC), a collaborative effort of the Mental Health and Recovery Board, its agencies, and local law enforcement departments to enhance approaches and intervening with mental health clients utilizing a variety of alternatives to incarceration, when possible. We provided a training component for school personnel as well as dispatchers. There has been continued participation with the Portage County Suicide Prevention Coalition. We also participated with the Portage Council for the Prevention of Violence and assisted in activities throughout the community. Working in collaboration with the Mental Health and Recovery Board and the agencies providing emergency crisis services an evaluation of existing services was done and recommendations made to enhance delivery of services with the limited funding that is available. Focus is toward the coordination and cross-training between agencies. An effort is being made to better utilize resources to serve individuals in the re-entry process as they return from incarceration, either at the local or state level. We had additional training and contact with Adult Protective Service situations involving multiple agencies.

BICYCLE PATROL The department replaced its 13 year-old fleet of police mountain bikes in 2011. The five new bicycles feature the latest mountain bike technology for improved safety and handling, and have updated graphics for better visibility. The nearly \$5000 purchase was funded by a Justice Assistance Grant. Specially trained bicycle officers patrol in spring, summer and fall in support of our community policing efforts and also assist with parades and other special events.

DEPARTMENT ORGANIZATIONAL STRUCTURE



ADMINISTRATIVE RESPONSIBILITIES

CHIEF OF POLICE

SERVICES CAPTAIN

Records Management
Communications
Statistical Reports
Data Sorts
Data Processing
Field Reporting
Inventory
Equipment
Physical Facility
Dispatch Coordination
Dispatch Training
Dispatch Scheduling
Dispatch Management
Discipline
Performance Reports

INVESTIGATIONS LIEUTENANT

General Investigations
Special Investigations
Evidence Examination
Evidence Storage
Juvenile Programs
Drug Task Force Member
Federal & State Agency Liaison
Felony Offense Oversight

OPERATIONS CAPTAIN

Patrol Operations
Personnel Reports
Patrol Scheduling
Personnel Complaints
Operations Coordination
Patrol Officer Training
Jail Operations
K-9 Operations
Bike Patrol Operations
Performance Reports
Discipline
Special Events

ADMINISTRATIVE LIEUTENANT

Crime Prevention
Planning & Research
Training & Records
Special Projects
Late Night Sales
Alarm Registry
Background Investigations
Neighborhood Meetings
Security Surveys
Nuisance Ordinance
News Media Liaison

TRAINING SUMMARY

Training is an integral part of establishing high professional standards within all organizations. The Kent Police Department is committed to providing the highest level of training, within financial constraints, for all components of the organization. This commitment is accomplished by using internal (in-service) and external training resources to provide advanced training, career development opportunities, and specialized training related to new law enforcement technology.

In-Service Training:

In-Service training was provided to all members of the department throughout the year. Much of this training was conducted through daily Roll Call training. Areas of Roll Call training include: review of department rules, policies, procedures; changes in state law and local ordinances; court rulings and decisions; community policing techniques; homeland security; officer survival; investigation techniques; firearm related issues; crime prevention concepts; and many other job-related subjects.

The police department also provided formalized and structured in-service training to police personnel. These training sessions were presented by state certified staff and department members in subject matters related to their fields of expertise. The 2011 in-service training included:

- Firearm training and certification for sidearms, shotguns and patrol rifles.
- Less-than-lethal weapon training, use of force decision-making and documentation
- Breath alcohol testing certification; electronic speed measuring devices

External Training:

External or outside training needs are met by sending personnel to specialized training academies, seminars, and workshops. These resources include both the private and public sector. Training needs are reviewed and determined for all components of the organization. The primary components are: administration, supervision/ management, investigations, records & dispatch, and patrol. The following courses represent specialized training members attended outside of the Department.

ADMINISTRATION: Police Executive Leadership College (PELC), National Incident Management System, Ohio Attorney General's Law Enforcement Conference, Ohio Association of Chiefs of Police (OACP) In-Service Training, New Chief's Workshop, Advanced Media Relations Training.

SUPERVISION & MANAGEMENT: National Incident Management System, S.T.E.P., OPOTA Instructor Skills Certification, Ohio Tactical Officers Training Conference, Intelligence Led Policing, Civil Liability and Use of Force Instruction and Force Science Seminar.

INVESTIGATIONS: Death Investigation, DNA ID Collection and Preservation, Practical Homicide Investigation, Fire Investigations, Identity Theft Investigation, Sexual Assault Investigation, Non-stranger Sexual Assault Investigation, Death Investigation – Forensic Aspects, Using Cell Phones in Criminal Investigations, Crime Scene Photography, Ohio Gang Investigator Seminar;

RECORDS & DISPATCH: Ohio Amber Alert Conference, Suicide Intervention, National Incident Management System, Intelligence Led Policing, Active Shooter Incidents for Public Safety Communications, TAC In-Service training, Communications Officer as Hostage Negotiator, Verbal Judo for Dispatch, Dispatching for People with Altered Mental Status.

PATROL: Basic Crash Investigation, Active Shooter Response Training, Death Investigations, Interview and Interrogation Techniques, Terrorism Awareness, BAC Datamaster Certification, Long Range Sniper Training, SCUBA Dive Certification, Rifle Armorer Certification, Police Canine Basic Patrol and Narcotics Certification, Instructional Skills, Advanced Detection Arrest and Prosecution of Persons OVI, OTOA Training Conference, Critical Incident Team, Patrol Drug Operations, Fugitive Task Force Training, Field Training Officer Certification, Working with Victims of Domestic Violence and Sexual Abuse, Analysis of Law Enforcement Officers Killed and Assaulted in the Line of Duty, Controlled FORCE training, Modern Report Writing, Force Science Seminar, Street Survival Seminar, Basic Police Photography, Vehicle Stop Tactics, Honor Guard Training and Civil Liability and Use of Force.



EMPLOYEE RECOGNITION



SUPERVISOR OF THE YEAR

Lieutenant Ed Wheeler

OFFICER OF THE YEAR

Officer James Ennemoser

CIVILIAN OF THE YEAR

Dispatcher Kirk Weitz

MERITORIOUS SERVICE AWARD

Officer James Ennemoser

SPECIAL COMMENDATION

Detective Paul Fafrak

OVI OFFICER OF THE YEAR

Officer Dominic Poe

FIREARM EXCELLENCE

Officer Ben Darrah
Officer Jared Bowen

FITNESS EXCELLENCE

Sergeant Jennifer Ennemoser
Detective Mark DiJerome

PERFECT WORK ATTENDANCE

Lieutenant Paul Canfield
Sgt. Michael Lewis
Officer John Romanoski
Officer John Gormsen
Detective Michael Domer
Officer Jason Short
Officer Dominic Poe
Officer Sarah Berkey
Officer Nicole Lipcsey



EMPLOYEE RECOGNITION



30 YEAR SERVICE RIBBON

Captain Gregory Urchek
Dispatch Coordinator Yolanda Smith

20 YEAR SERVICE RIBBON

Sergeant Sam Todd
Detective Paul Fafrak

15 YEAR SERVICE RIBBON

Lieutenant Paul Canfield
Sergeant Jennifer Ennemoser

10 YEAR SERVICE RIBBON

Lieutenant Ed Wheeler
Officer Tim Cole
Dispatcher Alisen Butcher

5 YEAR SERVICE RIBBON

Officer James Fuller
Detective Mike Domer
Officer Jason Short
Dispatcher Kirk Weitz
P/T Dispatcher Crystal Bower
Detention Officer Keith Cooper

RETIREMENTS

Chief James Peach
Lieutenant John Altomare
Lieutenant James Stein

PROMOTIONS

Chief Michelle Lee
Captain James Cole
Lieutenant James Prusha
Lieutenant Robert Treharn
Lieutenant George Wheeler
Sergeant Jennifer Ennemoser
Sergeant Michael Lewis
Sergeant Richard Soika

NEW FULL TIME HIRES

Officer Ryan Gaydosh
Officer Jared Bowen
Officer Joseph Hadaway

GENERAL OPERATIONAL DATA

| | <u>2010</u> | <u>2011</u> | % (+/-) |
|-----------------------|-------------|-------------|---------|
| Personnel Employed | 64 | 64 | ----- |
| Calls for Service | 20,669 | 19,470 | -5.08% |
| Fire Department Calls | 4,087 | 4,105 | 0.44% |
| Ambulance Calls | 3,133 | 3,154 | 0.67% |
| Fire Calls | 937 | 929 | 0.85% |
| Voided Run Numbers | 17 | 22 | 29.41% |
| Arrests, Total | 2,110 | 2,066 | -2.09% |
| Juvenile Arrests | 186 | 208 | 11.83% |
| OVI Arrests | 214 | 237 | 10.75% |
| Traffic Citations | 3,247 | 2,841 | -12.50% |
| Parking Tickets | 2,915 | 2,468 | -15.33% |

TRAFFIC ACCIDENT INFORMATION

| | <u>2008</u> | <u>2009</u> | <u>2010</u> | <u>2011</u> |
|----------------------------|-------------|-------------|-------------|-------------|
| Total Accident Complaints | 797 | 818 | 839 | 856 |
| Property Damage Accidents | 441 | 512 | 526 | 540 |
| Injury Accidents | 125 | 109 | 114 | 125 |
| Hit-Skip Accidents | 63 | 37 | 52 | 57 |
| Private Property Accidents | 168 | 160 | 147 | 134 |
| OVI Related Accidents | 22 | 17 | 13 | 27 |
| Pedestrian Accidents | 10 | 8 | 9 | 13 |
| Pedestrian Fatalities | 0 | 0 | 0 | 0 |
| Fatal Accidents | 0 | 0 | 0 | 0 |
| Fatalities | 0 | 0 | 0 | 0 |

CRIME TRENDS AND CLEARANCES
MAJOR EIGHT CRIMES

| | <u>2010</u> | <u>2011</u> | <u>TREND</u> | <u>CLEARED</u> | <u>%CLEARED</u> |
|-------------------|-------------|-------------|--------------|----------------|-----------------|
| Criminal Homicide | 1 | 2 | 100.00% | 2 | 100.00% |
| Rape | 8 | 6 | -25.00% | 1 | 16.67% |
| Robbery | 9 | 17 | 88.89% | 6 | 35.29% |
| Assault, Total | 217 | 235 | 8.29% | 182 | 77.45% |
| Aggravated | 21 | 33 | 57.14% | 20 | 60.61% |
| Not Aggravated | 196 | 202 | 3.06% | 162 | 80.20% |
| Burglary | 156 | 146 | -6.41% | 17 | 11.64% |
| Larceny | 451 | 472 | 4.66% | 80 | 16.95% |
| Auto Theft | 24 | 32 | 33.33% | 4 | 12.50% |
| Arson | 19 | 16 | -15.79% | 2 | 12.50% |
| Total | 885 | 926 | 4.63% | 294 | 31.75% |

CITY OF KENT 10 YEAR CRIME INDEX AND STATISTICS

| | 2002 | 2003 | 2004 | 2005 | 2006 | 2007 | 2008 | 2009 | 2010 | 2011 |
|---------------------------|-------|-------|-------|-------|-------|-------|-------|-------|-------|-------|
| Murder | 0 | 0 | 2 | 0 | 0 | 0 | 0 | 1 | 1 | 2 |
| Rape | 13 | 14 | 10 | 12 | 8 | 7 | 7 | 12 | 8 | 6 |
| Robbery | 14 | 17 | 15 | 19 | 24 | 11 | 20 | 15 | 9 | 17 |
| Assault | 327 | 318 | 264 | 248 | 258 | 275 | 270 | 263 | 217 | 235 |
| Burglary | 222 | 159 | 128 | 201 | 179 | 186 | 165 | 129 | 156 | 146 |
| Larceny | 647 | 601 | 546 | 571 | 596 | 478 | 436 | 431 | 451 | 472 |
| Auto Theft | 50 | 42 | 53 | 62 | 30 | 33 | 38 | 28 | 24 | 32 |
| Arson | 59 | 57 | 56 | 67 | 47 | 45 | 39 | 32 | 19 | 16 |
| Crime Index | 1333 | 1208 | 1115 | 1180 | 1142 | 1035 | 975 | 911 | 885 | 926 |
| Clearance Rate % | 35.2 | 35.5 | 33.0 | 31.36 | 32.31 | 24.35 | 21.13 | 30.85 | 28.59 | 31.75 |
| Domestic Violence Arrests | 80 | 76 | 74 | 89 | 79 | 71 | 83 | 82 | 98 | 106 |
| Accidents | 1058 | 1002 | 1071 | 949 | 885 | 840 | 797 | 818 | 839 | 856 |
| Injury | 177 | 160 | 165 | 149 | 127 | 101 | 125 | 109 | 114 | 125 |
| Fatal | 1 | 0 | 3 | 1 | 2 | 0 | 0 | 0 | 0 | 0 |
| Arrests | 2446 | 2366 | 2285 | 1977 | 2354 | 2376 | 2615 | 2440 | 2110 | 2066 |
| Juvenile Arrests | 137 | 160 | 187 | 131 | 184 | 181 | 208 | 217 | 186 | 208 |
| OVI Arrests | 307 | 293 | 436 | 341 | 364 | 253 | 306 | 302 | 214 | 237 |
| Citations | 4687 | 4470 | 4878 | 3817 | 3071 | 3380 | 3669 | 3554 | 3247 | 2841 |
| Calls | 22661 | 25010 | 25041 | 21284 | 19491 | 19937 | 21674 | 21765 | 20669 | 19470 |

ENFORCEMENT STATISTICS

| | TRAFFIC CITATIONS | OVI | ARRESTS |
|-------------------------|-------------------|------------|-------------|
| Chief Lee | | | |
| Chief Peach | | | |
| Captain Urchek | | | |
| Captain J Cole | | | 2 |
| Lt. Altomare | | | 1 |
| Lt. Stein | | | |
| Lt. Canfield | 1 | | 3 |
| Lt. Brown | 12 | | 4 |
| Lt. Treharn | | | 2 |
| Lt. Prusha | 8 | | 7 |
| Lt. Wheeler | 48 | 7 | 49 |
| Sgt. Todd | 4 | | 3 |
| Sgt. Jennifer Ennemoser | | | 2 |
| Sgt. Lewis | 55 | 5 | 59 |
| Sgt. Soika | 21 | 2 | 25 |
| Off. Bassett | 2 | | 3 |
| Off. Fleming | 52 | 1 | 45 |
| Off. DiJerome | 2 | | 10 |
| Off. Travis | 1 | | 4 |
| Off. Glass | 91 | | 33 |
| Off. Stirm | 68 | | 68 |
| Off. Harris | 101 | 2 | 42 |
| Off. Gilliland | 90 | 19 | 79 |
| Off. Fafrak | 2 | | 7 |
| Off. Schlosser | 122 | 20 | 95 |
| Off. Roberts | 114 | | 28 |
| Off. Dreger | 57 | | 26 |
| Off. Romanoski | 89 | 2 | 52 |
| Off. Jim Ennemoser | 109 | 2 | 55 |
| Off. Jacobs | 2 | | 9 |
| Off. Darrah | 85 | | 49 |
| Off. T. Cole | 119 | 1 | 37 |
| Off. Gormsen | 107 | 2 | 48 |
| Off. Fuller | 199 | 8 | 49 |
| Off. Domer | 56 | 10 | 68 |
| Off. Short | 134 | 25 | 115 |
| Off. Poe | 112 | 35 | 160 |
| Off. Butcher | 107 | 7 | 77 |
| Off. Shearer | 204 | 31 | 175 |
| Off. Berkey | 179 | 4 | 66 |
| Off. Marino | 114 | 25 | 161 |
| Off. Lipcsey | 115 | 8 | 146 |
| Off. Gaydosh | 108 | 8 | 92 |
| Off. Bowen | 102 | 5 | 69 |
| Off. Hadaway | 49 | 8 | 36 |
| Other | | | 5 |
| TOTAL | 2841 | 237 | 2066 |

TRAFFIC CITATION TYPE

| | CITATIONS | ADULT ARRESTS | JUVENILE ARRESTS |
|---|-------------|------------------|---------------------|
| Child Restraint | 10 | 11 | |
| Driving Under Suspension | 307 | 122 | 1 |
| Equipment Violation | 22 | 18 | |
| Expired Plates | 152 | 7 | |
| Fail to Control | 43 | 13 | |
| Fail to Dim Headlight | | | |
| Fail to Display Proper Registration | 39 | 11 | |
| Fail to Yield | 53 | 1 | |
| Fictitious Plates | 7 | 2 | |
| Flee and Elude | | | |
| Hit-Skip | 29 | 16 | |
| Improper Lane Use | 137 | 55 | 2 |
| Improper Passing | 5 | 1 | |
| Improper/Prohibited Turn | 154 | 21 | 1 |
| Left of Center | 4 | 3 | |
| Lighted Lights | 15 | 11 | |
| Miscellaneous Moving | 70 | 11 | |
| Miscellaneous Non-Moving | 25 | 13 | |
| No Headlights | 24 | 15 | |
| No Operator's License | 67 | 15 | |
| No Seat Belt | 86 | 2 | |
| Operating a Vehicle Under the Influence | 236 | 234 | 3 |
| Peel and Squeal | 3 | 0 | |
| Physical Control | 3 | 2 | |
| Prohibited Parking | 1 | | |
| Reckless Operation | 15 | 5 | |
| Red Light | 18 | 5 | |
| Speed / Assured Clear Distance | 987 | 37 | |
| Starting and Backing | 32 | 2 | |
| Stop Sign | 116 | 5 | |
| Traffic Control Device | 154 | 11 | |
| Weaving | 13 | | |
| Wrong Way on a One Way | 14 | 3 | |
| TOTAL | 2841 | | |

* There was 1 felony OVI arrest made during 2011. No ticket was written for this arrest. A long form complaint was done instead. The total number of OVI arrests for 2011 was 237.

CALLS FOR SERVICE

| | |
|-------------------------------------|-------|
| 911 Emergency Welfare Check..... | 100 |
| Abandoned Vehicle..... | 4 |
| Accident-Bicycle..... | 2 |
| Accident - Injury | 81 |
| Accident - Private Property..... | 124 |
| Accident - Property Damage | 827 |
| Accidental Damage..... | 10 |
| Alarms - Auto | 16 |
| Alarms - Intrusion..... | 613 |
| Alarms - Panic..... | 28 |
| Alcohol Violations..... | 17 |
| Animal Complaint..... | 389 |
| Assault..... | 160 |
| Assist Fire Department..... | 198 |
| Assist Maintenance..... | 1 |
| Assist Motorist..... | 11 |
| Assist Other Agency..... | 468 |
| Assist Squad | 15 |
| Assist Visitor | 16 |
| Auto Repossessed..... | 1 |
| Auto Towed..... | 44 |
| Bomb Threat | 1 |
| Burglary | 173 |
| Child Abuse | 3 |
| Community Policing | 172 |
| Complaints, General | 6 |
| Criminal Damage | 295 |
| Criminal Mischief..... | 48 |
| Criminal Trespass | 96 |
| Custody Dispute..... | 24 |
| Disabled Vehicle | 485 |
| Disorderly Conduct | 1,432 |
| DOA..... | 15 |
| Domestic Situations | 490 |
| Drug Offenses - Miscellaneous | 86 |
| Escort | 12 |
| Escort - Money..... | 13 |
| Felon Registration..... | 2 |
| Fireworks | 40 |
| Forgery | 10 |
| Found Property | 156 |
| Fraud | 84 |
| Harassment | 64 |
| Hostile Actions | 6 |
| Informational | 107 |
| Interpersonal Conflict | 8 |
| Juvenile Complaints..... | 228 |
| K9 Use..... | 112 |

CALLS FOR SERVICE

| | |
|---|-------|
| Kidnapping | 2 |
| Larceny / Theft | 588 |
| Littering | 11 |
| Lost Property | 60 |
| Menacing | 74 |
| Metro SWAT Assist..... | 11 |
| Miscellaneous | 883 |
| Missing Juvenile..... | 2 |
| Missing Person | 18 |
| Motor Vehicle Theft..... | 18 |
| Murder | 2 |
| Mutual Aid - Given | 71 |
| Noise Complaint..... | 393 |
| Obstructing Official Business | 1 |
| Open Container..... | 15 |
| Parking Violation | 263 |
| Policy Violation..... | 14 |
| Premises Check..... | 236 |
| Protection Order..... | 37 |
| Psychiatric Situation..... | 156 |
| Public Indecency | 3 |
| Records Check | 44 |
| Recovered Property | 8 |
| Rider | 16 |
| Robbery | 20 |
| Roommate Dispute | 23 |
| Sex Offense | 40 |
| Speaking Engagement..... | 21 |
| Special Detail | 575 |
| Special Event-Basketball | 3 |
| Special Event - Football Game..... | 2 |
| Special Event - Halloween | 10 |
| Special Event - May 4 th | 11 |
| Suicide | 1 |
| Suicide Attempt..... | 30 |
| Suicide Threat..... | 16 |
| Suspicious Circumstances | 225 |
| Suspicious Event | 890 |
| Suspicious Person | 237 |
| Suspicious Vehicle..... | 234 |
| Telecommunication Harassment..... | 112 |
| Traffic Stop | 6,013 |
| Unauthorized Use | 8 |
| Use of Force | 86 |
| Void / Unfounded | 18 |
| Wanted Person | 74 |
| Warrant Service | 268 |
| Weapons Offenses | 35 |
| Welfare Check | 287 |

ADULT ARRESTS

| CRIMINAL OFFENSES | NUMBER |
|---|--------|
| Abusing Harmful Intoxicants..... | 3 |
| Adulterated Food | 1 |
| Aggravated Arson | 1 |
| Aggravated Burglary | 3 |
| Aggravated Menacing | 8 |
| Aggravated Robbery | 2 |
| Aggravated Trespass..... | 1 |
| Animal at Large..... | 7 |
| Assault..... | 43 |
| Attempted Possess of Heroin..... | 1 |
| Attempted Theft | 1 |
| Barking or Howling Dogs..... | 1 |
| Breaking & Entering | 2 |
| Burglary | 13 |
| Carrying a Concealed Weapon | 5 |
| Complicity to Burglary | 1 |
| Complicity to Possess Criminal Tools | 5 |
| Complicity to Receiving Stolen Property..... | 1 |
| Complicity to Robbery | 1 |
| Consume in a Motor Vehicle | 1 |
| Contributing to the Delinquency of a Minor..... | 2 |
| Criminal Child Enticement..... | 1 |
| Criminal Damage | 40 |
| Criminal Mischief..... | 11 |
| Criminal Trespass | 53 |
| Deception to Obtain a Dangerous Drug..... | 2 |
| Discharge / Possess Fireworks | 1 |
| Discharge a Firearm with City Limits | 5 |
| Disorderly Conduct | 297 |
| Disrupting Public Service | 2 |
| Domestic Violence | 73 |
| Domestic Violence with a Prior..... | 14 |
| Escape..... | 1 |
| Fail to Comply with Lawful Order of a Police Officer..... | 16 |
| Falsification..... | 8 |
| Felonious Assault..... | 13 |
| Forgery | 7 |
| Gross Sexual Imposition | 2 |
| Held for Other Agency..... | 7 |
| Illegal Conveyance of Weapons | 1 |
| Improper Use of 911 | 4 |
| Inducing Panic | 2 |
| Intimidation | 1 |
| Intimidation of a Crime Victim..... | 1 |
| Killing or Injuring Animals..... | 1 |
| Littering | 2 |

CRIMINAL OFFENSES**NUMBER**

| | |
|---|-----|
| Making False Alarms..... | 1 |
| Menacing | 1 |
| Menacing by Stalking..... | 3 |
| Misrepresentation | 1 |
| Misuse of a Credit Card | 2 |
| Motor Vehicle Theft..... | 1 |
| Murder | 1 |
| No Taxicab Driver's License..... | 2 |
| No Taxicab License | 1 |
| Nuisance Party..... | 14 |
| Obstruct Justice | 2 |
| Obstruct Official Business | 44 |
| Open Container..... | 26 |
| Open Container in a Motor Vehicle | 2 |
| Parental Educational Neglect..... | 12 |
| Passing Bad Checks..... | 1 |
| Possess a Controlled Substance | 17 |
| Possess Cocaine | 3 |
| Possess Criminal Tools..... | 12 |
| Possess Dangerous Drugs | 1 |
| Possess Drug Paraphernalia..... | 92 |
| Possess Drugs..... | 9 |
| Possess Heroin..... | 2 |
| Possess Marijuana..... | 95 |
| Possess Weapon Under Disability | 4 |
| Prohibitions | 197 |
| Public Indecency..... | 1 |
| Rape | 1 |
| Receiving Stolen Property..... | 17 |
| Resisting Arrest..... | 6 |
| Robbery | 3 |
| Sexual Imposition..... | 1 |
| Soliciting Without A Permit..... | 1 |
| Taking Identity of Another | 2 |
| Tampering with Evidence | 1 |
| Teasing Or Striking Police Canines..... | 1 |
| Telecommunications Fraud..... | 3 |
| Telecommunications Harassment | 3 |
| Theft | 46 |
| Trafficking in Drugs..... | 10 |
| Transfer a Motor Vehicle with Tampered/Nonfunctional Odometer | 1 |
| Unauthorized Use of a Motor Vehicle..... | 4 |

CRIMINAL OFFENSES**NUMBER**

| | |
|--|-----|
| Unlawful Noise | 158 |
| Unlawful Restraint..... | 3 |
| Unlawful Sexual Conduct with a Minor | 1 |
| Vandalism | 6 |
| Violate a Protection Order | 14 |
| Warrant – Bench | 15 |
| Warrant Fail to Appear..... | 207 |
| Warrant Other Agency | 152 |

JUVENILE ARRESTS

| CRIMINAL CHARGES | NUMBER |
|--|--------|
| Aggravated Assault..... | 5 |
| Assault..... | 9 |
| Breaking and Entering..... | 1 |
| Carrying a Concealed Weapon | 3 |
| Criminal Damage | 3 |
| Criminal Mischief..... | 4 |
| Criminal Simulation | 1 |
| Criminal Trespass | 7 |
| Curfew | 55 |
| Discharge / Possess Fireworks | 1 |
| Discharge a Firearm with City Limits | 5 |
| Disorderly Conduct | 15 |
| Domestic Violence | 19 |
| Fail To Comply with Lawful Order of a Police Officer..... | 3 |
| Falsification..... | 2 |
| Illegal Conveyance or Possession of a Weapon on School Property..... | 1 |
| Inducing Panic | 2 |
| Obstruct Official Business | 7 |
| Possess a Controlled Substance | 6 |
| Possess Criminal Tools..... | 2 |
| Possess Drug Paraphernalia..... | 9 |
| Possess Marijuana..... | 13 |
| Prohibitions | 48 |
| Receiving Stolen Property..... | 2 |
| Resisting Arrest..... | 1 |
| Telecommunications Harassment | 1 |
| Theft | 13 |
| Unruly | 40 |
| Warrant Other Agency | 4 |

PROPERTY BY TYPE AND VALUE

SUPPLEMENT TO RETURN A MONTHLY RETURN OF OFFENSES KNOWN TO THE POLICE

1-706 (Rev 3-8-06)
OMB No 1110-0001
Expires 01-30-10

This report is authorized by law Title 28, Section 534, U.S. Code. Your cooperation in completing this form with the *Return A* will assist the FBI in compiling timely, comprehensive, and accurate data. Please submit this form monthly, by the seventh day after the close of the month, and any questions to the FBI, Criminal Justice Information Services Division, Attention: Uniform Crime Reports/Module E-3, 1000 Custer Hollow Road, Clarksburg, West Virginia 26306; telephone 304-625-4830, facsimile 304-625-3566. Under the Paperwork Reduction Act, you are not required to complete the form unless it contains a valid OMB control number. The form takes approximately 11 minutes to complete.

This form deals with the nature of crime and the monetary value of property stolen and recovered. The total offenses recorded on this form, page 2, should be the same as the number of actual offenses listed in Column 4 of the *Return A* for each crime class. Include attempted crimes on this form, but do not include unfounded offenses. If you cannot complete the report in all areas, please record as much information as is available. Tally sheets will be sent upon request.

| PROPERTY BY TYPE AND VALUE | | | |
|--|------------|--|------------------|
| Type of Property (1) | Data Entry | Monetary Value of Property Stolen in Your Jurisdiction | |
| | | Stolen (2) | Recovered (3) |
| (A) Currency, Notes, Etc. | 01 | \$110,239 | \$22,270 |
| (B) Jewelry and Precious Metals | 02 | \$62,782 | \$1,985 |
| (C) Clothing and Furs | 03 | \$9,212 | \$1,531 |
| (D) Locally Stolen Motor Vehicles | 04 | \$128,375 | \$84,900 |
| (E) Office Equipment | 05 | \$57,269 | \$4,300 |
| (F) Televisions, Radios, Stereos, Etc. | 06 | \$71,419 | \$8,965 |
| (G) Firearms | 07 | \$3,990 | \$250 |
| (H) Household Goods | 08 | \$3,680 | \$47 |
| (I) Consumable Goods | 09 | \$7,228 | \$560 |
| (J) Livestock | 10 | \$0 | \$0 |
| (K) Miscellaneous | 11 | \$128,710 | \$2 |
| TOTAL | 00 | \$582,904 | \$124,810 |

The total of this column should agree with the Grand Total (DATA ENTRY 77) shown on page 2.

Include in this column all property recovered even though stolen in prior months. The above is an accounting for only that property stolen in your jurisdiction. This will include property recovered for you by other jurisdictions, but not property you recover for them.

R Mosher
Prepared by
Clerk Dispatcher
Title

330.673.77332
Telephone Number
1/13/2012
Date

Michelle A Lee, Chief
Chief, Sheriff, Superintendent, or Commanding Officer

2011 Yearly
Month and Year of Report
OH0670300
Agency Identifier

28904
Population

Kent Police Department Ohio
Agency and State

| DO NOT USE THIS SPACE | |
|-----------------------|----------|
| | INITIALS |
| RECORDED | |
| EDITED | |
| ENTERED | |
| ADJUSTED | |
| CORRES. | |

PROPERTY STOLEN BY CLASSIFICATION

| PROPERTY STOLEN BY CLASSIFICATION | | | |
|--|------------|---|-----------------------------------|
| CLASSIFICATION | DATA ENTRY | Number of Actual Offenses (Column 4 Return A) | Monetary Value of Property Stolen |
| 1. MURDER AND NONNEGLIGENT MANSLAUGHTER | 12 | 2 | \$0 |
| 2. FORCIBLE RAPE | 20 | 6 | \$0 |
| 3. ROBBERY | | | |
| (a) HIGHWAY (streets, alleys, etc.) | 31 | 10 | \$13,121 |
| (b) COMMERCIAL HOUSE (except c, d, and f) | 32 | 2 | \$102 |
| (c) GAS OR SERVICE STATION | 33 | 1 | \$60 |
| (d) CONVENIENCE STORE | 34 | 1 | \$26 |
| (e) RESIDENCE (anywhere on premises) | 35 | 2 | \$2,445 |
| (f) BANK | 36 | 0 | \$0 |
| (g) MISCELLANEOUS | 37 | 1 | \$75 |
| TOTAL ROBBERY | | 17 | \$15,829 |
| 5. BURGLARY - BREAKING OR ENTERING | | | |
| (a) RESIDENCE (dwelling) | | | |
| (1) NIGHT (6 p.m. - 6 a.m.) | 51 | 42 | \$19,621 |
| (2) DAY (6 a.m. - 6 p.m.) | 52 | 39 | \$37,637 |
| (3) UNKNOWN | 53 | 38 | \$42,540 |
| (b) NON-RESIDENCE (store, office, etc.) | | | |
| (1) NIGHT (6 p.m. - 6 a.m.) | 54 | 7 | \$1,233 |
| (2) DAY (6 a.m. - 6 p.m.) | 55 | 3 | \$450 |
| (3) UNKNOWN | 56 | 17 | \$33,808 |
| TOTAL BURGLARY | 50 | 146 | \$135,289 |
| 6. LARCENY - THEFT (Except Motor Vehicle Theft) | | | |
| (a) \$200 AND OVER | 61 | 231 | \$289,291 |
| (b) \$50 TO \$199 | 62 | 139 | \$15,914 |
| (c) UNDER \$50 | 63 | 102 | \$1,945 |
| TOTAL LARCENY (Same as Item 6x) | 60 | 472 | \$307,150 |
| 7. MOTOR VEHICLE THEFT (Include Alleged Joy Ride) | 70 | 32 | \$124,636 |
| GRAND TOTAL - ALL ITEMS | 77 | | \$582,904 |
| ADDITIONAL ANALYSIS OF LARCENY AND MOTOR VEHICLE THEFT | | | |
| 6x. NATURE OF LARCENIES UNDER ITEM 6 | | | |
| (a) POCKET-PICKING | 81 | 2 | \$25 |
| (b) PURSE-SNATCHING | 82 | 1 | \$50 |
| (c) SHOPLIFTING | 83 | 22 | \$966 |
| (d) FROM MOTOR VEHICLES (except e) | 84 | 128 | \$61,067 |
| (e) MOTOR VEHICLE PARTS AND ACCESSORIES | 85 | 38 | \$9,591 |
| (f) BICYCLES | 86 | 22 | \$6,944 |
| (g) FROM BUILDING (except c and h) | 87 | 135 | \$93,504 |
| (h) FROM ANY COIN-OPERATED MACHINES (parking meters, etc.) | 88 | 1 | \$20 |
| (i) ALL OTHER | 89 | 123 | \$134,983 |
| TOTAL LARCENIES (Same as Item 6) | 80 | 472 | \$307,150 |
| 7x. MOTOR VEHICLES RECOVERED | | | |
| (a) STOLEN LOCALLY AND RECOVERED LOCALLY | 91 | 7 | |
| (b) STOLEN LOCALLY AND RECOVERED BY OTHER JURISDICTIONS | 92 | 14 | |
| (c) TOTAL LOCALLY STOLEN MOTOR VEHICLES RECOVERED (a & b) | 90 | 21 | |
| (d) STOLEN IN OTHER JURISDICTIONS AND RECOVERED LOCALLY | 93 | 5 | |

NUMBER OF OFFENSES

RETURN A - MONTHLY RETURN OF OFFENSES KNOWN TO THE POLICE

This report is authorized by law Title 28, Section 534, U.S. Code. Your cooperation in completing this form will assist the FBI, in compiling timely comprehensive, and accurate data. Please submit this form monthly, by the seventh day after the close of the month, and any questions to the FBI, Criminal Justice Information Services Division, Attention: Uniform Crime Reports/Module E-3, 1000 Custer Hollow Road, Clarksburg, West Virginia 26306; telephone 304-625-4830, facsimile 304-625-3566. Under the Paperwork Reduction Act, you are not required to complete this form unless it contains a valid OMB control number. The form takes approximately 10 minutes to complete. Instructions for preparing the form appear on the reverse side.

1-720 (Rev. 3-08-06)
OMB No. 1110-0001
Expires 01-30-10

| CLASSIFICATION OF OFFENSES | DATA ENTRY | 2 OFFENSES REPORTED OR KNOWN TO POLICE (INCLUDE 'UNFOUNDED' AND ATTEMPTS) | 3 UNFOUNDED, I.E., FALSE OR BASELESS COMPLAINTS | 4 NUMBER OF ACTUAL OFFENSES (COLUMN 2 MINUS COLUMN 3) (INCLUDE ATTEMPTS) | 5 TOTAL OFFENSES CLEARED BY ARREST OR EXCEPTIONAL MEANS (INCLUDES COL. 6) | 6 NUMBER OF CLEARANCES INVOLVING ONLY PERSONS UNDER 18 YEARS OF AGE |
|--|------------|--|--|--|--|---|
| 1. CRIMINAL HOMICIDE | | | | | | |
| a. MURDER AND NONNEGLIGENT HOMICIDE (Score attempts as aggravated assault) If homicide reported, submit Supplementary Homicide Report | 11 | 2 | 0 | 2 | 2 | 0 |
| b. MANSLAUGHTER BY NEGLIGENCE | 12 | 0 | 0 | 0 | 0 | 0 |
| 2. FORCIBLE RAPE TOTAL | 20 | 6 | 0 | 6 | 1 | 0 |
| a. Rape by Force | 21 | 6 | 0 | 6 | 1 | 0 |
| b. Attempts to commit Forcible Rape | 22 | 0 | 0 | 0 | 0 | 0 |
| 3. ROBBERY TOTAL | 30 | 17 | 0 | 17 | 5 | 0 |
| a. Firearm | 31 | 9 | 0 | 9 | 3 | 0 |
| b. Knife or Cutting Instrument | 32 | 2 | 0 | 2 | 0 | 0 |
| c. Other Dangerous Weapon | 33 | 0 | 0 | 0 | 0 | 0 |
| d. Strong-Arm (Hands, Fists, Feet, Etc.) | 34 | 6 | 0 | 6 | 2 | 0 |
| 4. ASSAULT TOTAL | 40 | 235 | 0 | 235 | 182 | 34 |
| a. Firearm | 41 | 2 | 0 | 2 | 3 | 2 |
| b. Knife or Cutting Instrument | 42 | 4 | 0 | 4 | 4 | 1 |
| c. Other Dangerous Weapon | 43 | 2 | 0 | 2 | 2 | 0 |
| d. Hands, Fists, Feet, Etc. - Aggravated injury | 44 | 25 | 0 | 25 | 11 | 2 |
| e. Other Assaults - Simple, Not Aggravated | 45 | 202 | 0 | 202 | 162 | 29 |
| 5. BURGLARY TOTAL | 50 | 146 | 0 | 146 | 17 | 1 |
| a. Forcible Entry | 51 | 63 | 0 | 63 | 5 | 1 |
| b. Unlawful Entry - No Force | 52 | 68 | 0 | 68 | 11 | 0 |
| c. Attempted Forcible Entry | 53 | 15 | 0 | 15 | 1 | 0 |
| 6. LARCENY - THEFT TOTAL (Except Motor Vehicle Theft) | 60 | 472 | 0 | 472 | 80 | 14 |
| 7. MOTOR VEHICLE THEFT TOTAL | 70 | 32 | 0 | 32 | 4 | 0 |
| a. Autos | 71 | 17 | 0 | 17 | 2 | 0 |
| b. Trucks and Buses | 72 | 0 | 0 | 0 | 0 | 0 |
| c. Other Vehicles | 73 | 15 | 0 | 15 | 2 | 0 |
| GRAND TOTAL | 77 | 910 | 0 | 910 | 291 | 49 |

CHECKING ANY OF THE APPROPRIATE BLOCKS BELOW WILL ELIMINATE YOUR NEED TO SUBMIT REPORTS WHEN THE VALUES ARE ZERO THIS WILL ALSO AID THE NATIONAL PROGRAM IN ITS QUALITY CONTROL EFFORTS

| | |
|---|---|
| <input type="checkbox"/> NO SUPPLEMENTARY HOMICIDE REPORT SUBMITTED SINCE NO MURDERS, JUSTIFIABLE HOMICIDES, OR MANSLAUGHTERS BY NEGLIGENCE OCCURRED IN THIS JURISDICTION DURING THE MONTH <input type="checkbox"/> NO SUPPLEMENT TO RETURN A REPORT SINCE NO CRIME OFFENSES OR RECOVERY OF PROPERTY REPORTED DURING THE MONTH <input type="checkbox"/> NO LAW ENFORCEMENT OFFICERS KILLED OR ASSAULTED REPORT SINCE NONE OF THE OFFICERS WERE ASSAULTED OR KILLED DURING THE MONTH | <input type="checkbox"/> NO AGE, SEX, AND RACE OF PERSONS ARRESTED UNDER 18 YEARS OF AGE REPORT SINCE NO ARRESTS OF PERSONS WITHIN THIS AGE GROUP <input type="checkbox"/> NO AGE, SEX, AND RACE OF PERSONS ARRESTED 18 YEARS OF AGE AND OVER REPORT SINCE NO ARREST OF PERSONS WITHIN THIS AGE GROUP <input type="checkbox"/> NO MONTHLY RETURN OF ARSON OFFENSES KNOWN TO LAW ENFORCEMENT REPORT SINCE NO ARSONS OCCURRED |
|---|---|

DO NOT USE THIS SPACE

| | |
|----------|----------|
| | INITIALS |
| RECORDED | |
| EDITED | |
| ENTERED | |
| ADJUSTED | |
| CORRES | |

2011 Yearly
Month and Year of Report

OH0670300
Agency Identifier

28904
Population

R Mosher
Prepared by
330.673.77332
Telephone Number

Clerk Dispatcher
Title
1/13/2012
Date

Kent Police Department Ohio
Agency and State

Michelle A Lee, Chief
Chief, Sheriff, Superintendent, or Commanding Officer

ARSONS

MONTHLY RETURN OF ARSON OFFENSES KNOWN TO LAW ENFORCEMENT

This form is authorized by law Title 28, Section 534, U.S. Code, and the enactment of the fiscal year 1979, Department of Justice Authorization Bill S. 3151. Your cooperation in completing this form to report all monthly incidents of arson, will assist the FBI in compiling timely, comprehensive, and accurate data. Please submit this form and any questions to the FBI, Criminal Justice Information Services Division, Attention: Uniform Crime Reports/Module E-3, 1000 Custer Hollow Road, Clarksburg, West Virginia 26306; telephone 304-625-4830, facsimile 304-625-3586. Under the Paperwork Reduction Act, you are not required to complete this form unless it contains a valid OMB control number. This form takes approximately 9 minutes to complete. Instructions appear on reverse side.

1-7-20 (Rev. 10-10-10)

OMB No. 1110-0008

Expires 03-31-12

| 1 PROPERTY CLASSIFICATION | | 2 Offenses Reported or Known to Police (Include Unfounded) and Attempts) | 3 Unfounded, i.e., False or Baseless Complaints | 4 Number of Actual Offenses (Column 2 Minus Column 3) (Include Attempts) | 5 Total Offenses Cleared by Arrest or Exceptional Means (Include Column 6) | 6 Number of Clearances Involving Only Persons Under 18 Years of Age | 7 Offenses Where Structures Uninhabited, Abandoned, or not Normally in Use | 8 Estimated Value of Property Damage |
|--|--|--|--|---|--|--|---|--|
| S T R U C T U R A L | A. Single Occupancy Residential: Houses, Townhouses, Duplexes, etc. | 2 | 0 | 2 | 1 | | | \$50,010 |
| | B. Other Residential: Apartments, Tenements, Flats, Hotels, Motels, Inns, Dormitories, Boarding Houses, etc. | 2 | 0 | 2 | | | | \$75,000 |
| | C. Storage: Barns, Garages, Warehouses, etc. | | | 0 | | | | |
| | D. Industrial/Manufacturing | | | 0 | | | | |
| | E. Other Commercial: Stores, Restaurants, Offices, etc. | | | 0 | | | | |
| | F. Community/Public: Churches, Jails, Schools, Colleges, Hospitals, etc. | 1 | 0 | 1 | | | | \$600 |
| | G. All Other Structure: Out Buildings, Monuments, Buildings Under Construction, etc. | | | 0 | | | | |
| | TOTAL STRUCTURE | 5 | 0 | 5 | 1 | 0 | 0 | \$125,610 |
| M O B I L E | H. Motor Vehicles: Automobiles, Trucks, Buses, Motorcycles, etc.: UCR Definition | | | 0 | | | | |
| | I. Other Mobile Property: Trailers, Recreational Vehicles, Airplanes, Boats, etc. | | | 0 | | | | |
| | TOTAL MOBILE | 0 | 0 | 0 | 0 | 0 | 0 | \$0 |
| J. TOTAL OTHER Crops, Timber, Fences, Signs, etc. | | 11 | 0 | 11 | 1 | | | \$1,900 |
| GRAND TOTAL | | 16 | 0 | 16 | 2 | 0 | 0 | \$127,510 |

OH0670300

Agency Identifier

Kent Police Department

Agency

2011 Yearly

Month

Ohio

State

DO NOT WRITE HERE

Recorded

Edited

Entered

OFFICERS KILLED OR ASSAULTED

1-705 (Rev. 11-17-2009)

OMB No. 1110-0006
Expires 03-13-2013

LAW ENFORCEMENT OFFICERS KILLED OR ASSAULTED

This report is authorized by law Title 28, Section 534, U.S. Code. Even though you are not required to respond, your cooperation in using this form to report the number of your officers who were killed or assaulted in the line of duty during the month will assist the FBI in compiling timely, comprehensive, and accurate data. Please submit this report, by the seventh day after the close of the month, and any questions to the FBI, Criminal Justice Information Services Division, Attention: Uniform Crime Reports/Module E-3, 1000 Custer Hollow Road, Clarksburg, West Virginia 26306; telephone 304-625-4830; facsimile 304-625-3566. Under the Paperwork Reduction Act, you are not required to complete this form unless it contains a valid OMB control number. The form takes approximately 7 minutes to complete. Instructions for preparing the form are on the reverse side. Additional information on officers who were assaulted and injured with a firearm or a knife or other cutting instrument will be requested on a separate questionnaire *Analysis of Law Enforcement Officers Killed and Assaulted*.

OFFICERS KILLED

| | | |
|--|---------------------------|---|
| Number of your law enforcement officers killed in the line of duty this month. | By felonious act | 0 |
| | By accident or negligence | 0 |

OFFICERS ASSAULTED (Do not include officers killed) - See other side for instructions.

| Type of activity | Total assaults by weapon A | Type of weapon | | | | Two-officer vehicle F | Type of assignment | | | | | | Officer assaults cleared M | |
|---|-------------------------------|----------------|--|-----------------------------|-------------------------------|--------------------------|---------------------|---------------|------------------------------|---------------|------------|---------------|-------------------------------|---|
| | | Firearm B | Knife or other cutting instrument C | Other dangerous weapon D | Hands, fists, feet, etc. E | | One-officer vehicle | | Detective or special assign. | | Other | | | |
| | | | | | | | Alone G | Assisted H | Alone I | Assisted J | Alone K | Assisted L | | |
| 1. Responding to disturbance calls (family quarrels, person with firearm, etc.) | 4 | | | | 4 | | | 4 | | | | | | 3 |
| 2. Burglaries in progress or pursuing burglary suspects | 0 | | | | | | | | | | | | | |
| 3. Robberies in progress or pursuing robbery suspects | 0 | | | | | | | | | | | | | |
| 4. Attempting other arrests | 1 | | | | 1 | | | 1 | | | | | | 1 |
| 5. Civil disorder (riot, mass disobedience, etc.) | 0 | | | | | | | | | | | | | |
| 6. Handling, transporting, custody of prisoners | 0 | | | | | | | | | | | | | |
| 7. Investigating suspicious persons or circumstances | 0 | | | | | | | | | | | | | |
| 8. Ambush - no warning | 0 | | | | | | | | | | | | | |
| 9. Handling persons with mental illness | 0 | | | | | | | | | | | | | |
| 10. Traffic pursuits and stops | 0 | | | | | | | | | | | | | |
| 11. All other | 0 | | | | | | | | | | | | | |
| 12. TOTAL (1-11) | 5 | 0 | 0 | 0 | 5 | 0 | 0 | 5 | 0 | 0 | 0 | 0 | 4 | |
| 13. Number with personal injury* | 2 | | | | 2 | DO NOT WRITE HERE | | | | | | | | |
| 14. Number without personal injury | 3 | | | | 3 | | | | | | | | | |

| | 12:01 | 2:00 | 4:00 | 6:00 | 8:00 | 10:00 | 12:00 |
|----------------------|-------|------|------|------|------|-------|-------|
| 15. Time of assaults | AM | 3 | 1 | | | | |
| | PM | 1 | | | | | |

| DO NOT WRITE HERE | |
|-------------------|----------|
| Recorded | Initials |
| Edited | |
| Entered | |
| Verified | |
| Adjusted | |

2011- Yearly
Month and Year
Kent Police Department
Agency

OH0670300
Agency Identifier
Ohio
State

R Mosher / mosher@kent-ohio.org
Prepared by / E-mail address
Michelle A Lee, Chief
Chief, Sheriff, Superintendent, Commanding Officer

Clerk Dispatcher
Title

*If the officer was injured with a firearm (13B) or a knife or other cutting instrument (13C), please complete the block on the reverse side and include your agency's incident or case number(s). This information is only for your agency's use to assist in referencing the incident once the above-mentioned questionnaire is forwarded to you for completion.

FBI/DOJ