

KENT POLICE DEPARTMENT

319 SOUTH WATER STREET KENT, OHIO 44240

330-673-7732

MICHELLE A. LEE

Chief of Police

TO: City Manager David Ruller
Mayor Jerry Fiala
Kent City Council

FROM: Chief Michelle A. Lee

SUBJECT: Kent Police Department 2015 Annual Report

DATE: February 5, 2016

On behalf of the members of the Kent Police Department, I am pleased to present you with the 2015 Annual Report. This report is intended to provide the Kent community with a greater insight of the programs, activities and accomplishments of their police department. The report also summarizes the crime and accident trends for Kent as well as clearance rates.

Looking back on the year there were several major cases that required considerable effort, manpower and cooperation between staff members and outside agencies. These cases received media attention both locally and nationally. In the Spring a police cruiser and KSU ROTC vans were arson targeted and those suspects were also linked to an Aggravated Burglary and were charged and convicted. A bar fight resulted with shots fired downtown striking one victim continues to be investigated. Operation "Cupid's Arrow" in February from the Portage County Drug Task Force resulted in 26 arrests predominantly from the Kent Community. A homicide of a Kent State student residing on Fleeter Ct. continues to be investigated. An officer involved shooting on Virginia Ave. resulted in one civilian death and continues to be investigated. A fiery one vehicle crash on Stow St. highlights rescuing officer heroism and diminished injuries to the driver. Considering our agency's size I believe our perseverance for providing high quality service under extraordinary circumstances was demonstrated without reproach.

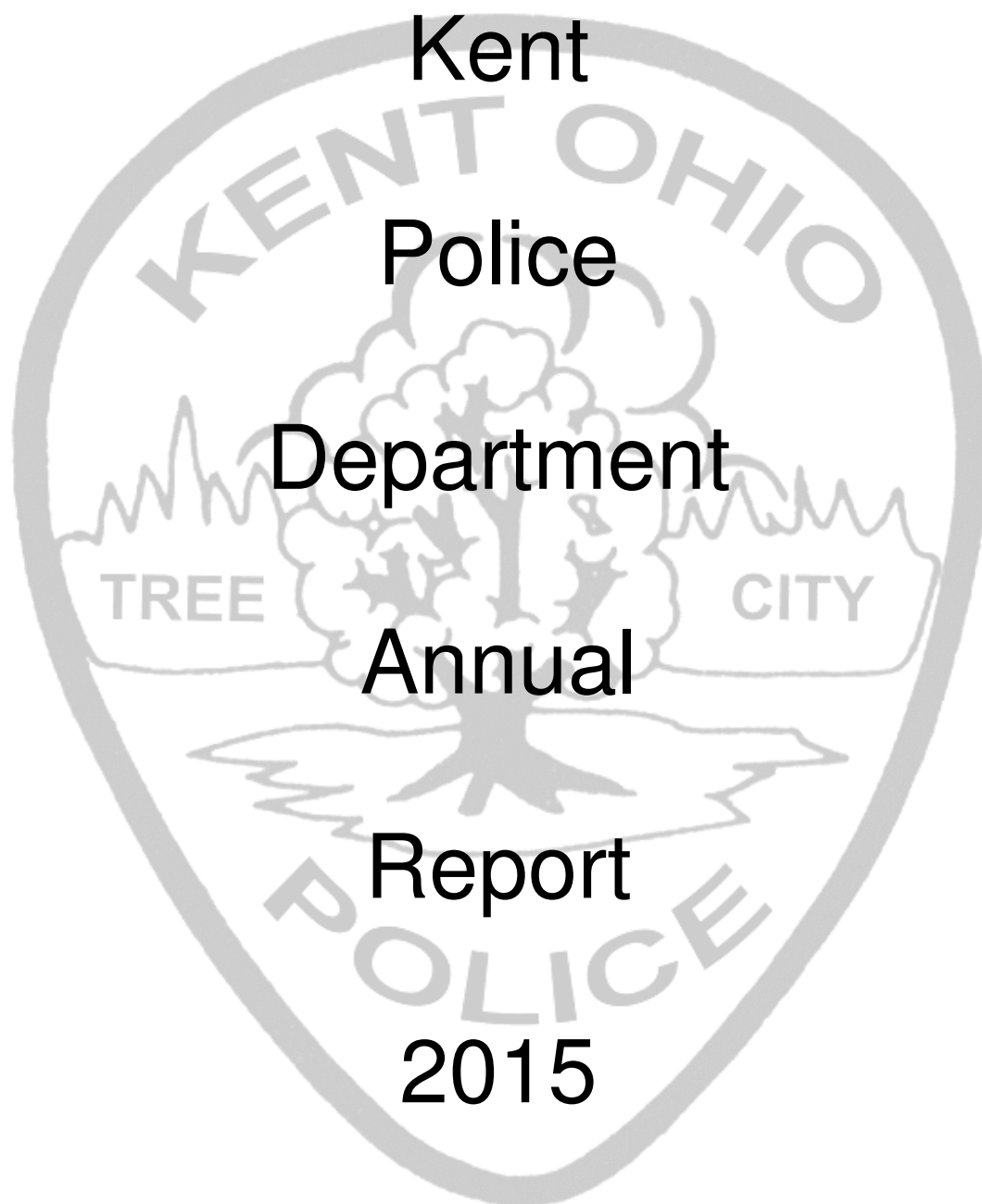
In researching our statistical information it is important for me to provide a few highlights. There is a continued decline of most "Major 10" crimes which is noted in the 10 Year Crime Index. Overall, 2015's crime index was the lowest in the 10 year comparison chart. In contrast, we experienced the highest number of accidents at 1067 in 10 years even after

increasing traffic citations by more than 300 over last year. All of these reductions in crime and gains in enforcement efforts were paired with an increase in calls for service of more than 2,400 over last year. Calls for service were the highest in 2015 in ten years. A big challenge for us was to assist Community Development with the implementation and enforcement of metered parking. We added an additional Compliance Officer position to help manage, monitor and enforce the metered parking to benefit downtown merchants. A review of the parking ticket collections and enforcement statistics page will demonstrate our commitment to the program and the successes we have experienced.

The department enjoyed being involved in several new and existing community based programs last year. To name a few; "Unity in the Community" involving the South End residents at Plum Creek Park, Brimfest Parade, 9/11 Tribute at Hometown Bank, KSU's Constitution Day reading and participation with Kent Interfaith Alliance. These initiatives and many more demonstrates our commitment to embrace the partnerships that make Kent unique, diverse and successful.

Respectfully submitted,

Michelle A. Lee
Chief of Police



COMPILED BY ELIZABETH SADOWSKI

MISSION STATEMENT

The mission of the Kent Police Department is to serve and protect the persons and property in the City of Kent. We strive to create and promote partnerships with our community through education and collaboration. We apply the law consistently while professionally interacting with the public.

VISION STATEMENT

The members of the Kent Police Department will embrace the partnerships that make Kent unique, diverse and successful. We will provide a balance of enforcement, education and service for our community. We are committed to maintaining the highest standards of training and education to become the premiere law enforcement agency in Portage County.

VALUES STATEMENT

We, the members of the City of Kent Police Department, believe our service to the community is driven by values. These values determine how our mission and goals will be achieved. We will:

- * Be responsible and accountable to the citizens of the city of Kent, from whom we derive our authority. Each member of our agency will also be responsible and accountable to the organization and its members for living and acting in accordance to our values;
- * Take pride in our profession, yet remain humble by the awesome responsibility and authority bestowed to us by the citizens of Kent;
- * Maintain the highest levels of integrity in all our actions by ethically performing our duties within the spirit and the letter of our laws and Constitution;
- * Foster a sense of family, teamwork, and partnership among all members of the department, between police and other city departments, and between the police department and the community;
- * Remain loyal to our profession, our organization, and our community. We will demonstrate our loyalty by our commitment and dedication to excellence and innovation in providing service to the community;
- * Remain sensitive to human needs and always treat each person with fairness, dignity and respect; and
- * Through courage and professionalism make a difference in the lives of those with whom we interact each day.

Table of Contents

ACCOMPLISHMENTS	1
PROGRAMS	4
ORGANIZATIONAL STRUCTURE	9
ADMINISTRATIVE RESPONSIBILITIES	10
TRAINING SUMMARY	11
EMPLOYEE RECOGNITION	14
EMPLOYEE RECOGNITION	15
KENT POLICE - KENT STATE UNIVERSITY PARTNERSHIPS.....	16
GENERAL OPERATIONAL DATA	19
TRAFFIC ACCIDENT TRENDS	20
CRIME TRENDS AND CLEARANCES.....	21
10 YEAR CRIME INDEX	22
ENFORCEMENT BY OFFICER	23
TRAFFIC CITE BY TYPE.....	25
TYPES OF CALLS FOR SERVICE.....	30
PARKING TICKET SUMMARY.....	33
PARKING TICKET BY TYPE.....	33
ADULT ARREST BY TYPE	36
JUVENILE ARREST BY TYPE	39
CRIME REPORTED TO FBI	40
ARSONS	42
LAW ENFORCEMENT OFFICERS KILLED OR ASSAULTED.....	43

Accomplishments

K.P.C.A.

The Kent Police Citizens Association (KPCA) is a non-profit organization whose mission is to enrich the Kent area community through police support. Numerous gifts and donations were given to various organizations and other fund raising events throughout the year to benefit the Kent community.

Annually, a scholarship of \$500.00 is awarded to a deserving RHS graduating senior who is involved in their community. This year's award winner was Brea Gunn!



KPCA, in partnership with Walgreen's, conducted a prosperous "Fill-A-Cruiser" program to benefit local needy families. Multiple families and children were provided gifts and food. KPCA also sponsored "Bowl against Abuse" through the Children's Advocacy Center.



PRESENTATIONS, DISCUSSION AND DEMONSTRATIONS

The department is active in seeking out opportunities to interact with many community groups on a variety of topics, below were a few examples:

- Multiple Journalism Classes KSU
- KSU Greek Affairs, Interfraternity Council
- 3rd Annual Greek Fire Academy
- KSU Center for student involvement

- KSU Kent Interhall Council
- Multiple presentations requested by PMHA in area housing complexes
- Kent Jaycees presentation
- KSU Criminal Justice class, Police Role
- Silver Meadows Management
- Safety talks at individual fraternities & sororities
- Maplewood Police/Community Panel on Police & Community Relations
- Kent Rotary Club presentation
- KSU Class, “Cultural Dynamics of Technology”
- Tower 43 and other apartment complex presentations on security & crime prevention.
- A.L.I.C.E. presentations at Kent City Schools
- Kent Interfaith Alliance
- Annual Click It or Ticket Campaign Kickoff
- Hometown Bank – Alarm procedures and emergency handling
- Interfraternity Council – Police/Greek relations
- Kent Inter-faith Alliance on Reconciliation and Justice at First Christian Church



AWARDS

Crisis Intervention Team – The Mental Health and Recovery Board recognized one of our police officers this year. Patrolman Michael Fleming received the CIT (Crisis Intervention Team) “Officer of the Year” award for utilizing his CIT training during mental health crises and making a difference.

Boogie Boards – Deputy Joe Kamer and his wife, who works for Kent Display, donated ten “Boogie Boards” to the Kent Police Department. They made similar donations to other law enforcement entities. The “Boogie Boards” are an electronic note pad that uses LCD technology to sketch, write or draw without paper. The boards were assigned to each cruiser for officers

to use so they can quickly jot down information, the boards then electronically erase.

Cell phone technology - The Region 5 LESHSP (Law Enforcement State Homeland Security Grant Program) has jointly awarded our department and Kent State University Police Department with a Forensic Extraction hardware/Software Program. The awarded equipment allows us to extract information from cellular devices, flash drives, GPS units and other similar technological devices. This equipment is critical in extracting information pertaining to investigations or for evidentiary value.

The award hinged on our two departments co-owning the equipment and working cooperatively to share the equipment. There is also an annual maintenance fee of \$1,500 per department to support the equipment. The equipment will be maintained by our department and KSUPD will use as needed.



Speed Measuring Device - The Ohio Department of Public Safety through its Ohio Traffic Safety Office has awarded our department with a new Laser LTI speed measuring device. The awarded equipment is based on our good standing and continued participation in the annual Traffic Safety Mobilizations namely "Click it or Ticket" and "Drive Sober or Get Pulled Over".

Programs

NORTHERN OHIO VIOLENT FUGITIVE TASK FORCE (NOVFTF) - Under



the direction of the U. S. Marshal's Office, this multi-jurisdictional agency, represented by federal, state and local law enforcement agencies, search for and apprehend dangerous felons and fugitives who are located in the jurisdictions of the participating agencies. Two officers are assigned part-time to this organization which has been instrumental in the apprehension of Kent area fugitives. Over 276 operational hours were dedicated to the Marshal's Task Force. Our officers were involved with searching for 139 subjects resulting in making 55 arrests, 18 of those were KPD warrants.

TERRORISM LIAISON OFFICER - Ohio Homeland Security has adopted a TLO Program that establishes a baseline intelligence capability throughout the State, utilizing existing law enforcement resources. The TLO serves as our county-wide point of contact in terrorism related information and intelligence. The TLO serves as a liaison to all other law enforcement, Fire and EMS in providing information and guidance to local officials and acts as the Point of Contact (POC) for homeland security information. We have one officer dedicated to this program part-time. Our officer attended four meetings and an annual conference to discuss Human Trafficking, Violent Extremists- Targeting Law Enforcement Officers, Emerging Threat of a Complex Terrorist Attack, The great tank debate discussing military equipment used by police, State and Local Response to a Terrorist Attack, Unified Response to Active Shooter Incidents, and Body Worn Camera objectives. Our officer has initiated several investigations related to suspicious activity in the City of Kent. Our Officer assisted with gathering and disseminating intelligence to the State of Ohio fusion center. Information was also shared about current crime trends. In addition our Officer was able to secure a grant for a cell phone forensic work station called Cellbrite. Under the grant Officers were trained on the use of the technology and the technology was provided at no cost to the Police Department. This equipment will assist with numerous investigations. Our TLO also had the opportunity to teach the Citizen Police Academy. During this opportunity several community members were trained on the concept of "See Something Say Something."

PORTAGE COUNTY DRUG TASK FORCE

Under the direction of the Portage County Sheriff, this multi-jurisdictional agency investigates and apprehends offenders involved in the trafficking, distribution, and possession of illegal drugs within the communities of participating agencies. Membership includes the Portage County Sheriff's Office, the Portage County Prosecutor's Office, and the Kent, Aurora, Ravenna, Streetsboro, DEA, police departments. Each agency has at least one (1) full time officer assigned to the Task Force. In 2015 "Operation Cupid's Arrow" netted 26 arrests, many of which were from the Kent community.



METRO SWAT - This highly trained, professional multi-jurisdictional special weapons team responds to incidents within the jurisdictions of participating members that require special weapons and tactics to deal with riotous activity, large crowd control, barricaded suspects, the execution of drug warrants, arrest of dangerous felons, and the rescue of hostages or endangered persons. The organization is comprised of 19 Summit/ Portage County law enforcement agencies. The Kent community needed the assistance of Metro SWAT on two occasions in 2015. METRO SWAT is instrumental during Kent's Halloween event each year and with KSU related spring parties.

K-9 PROGRAM - The K-9 program greatly enhances uniformed patrol in the detection and apprehension of criminal offenders, locating missing persons and children, and provides better safety for officers in physical confrontations and dangerous situations. We currently have two allocated K-9 positions within the patrol division. K-9 teams are dedicated full time to the program as the dogs are housed and cared for by the officer 24 hours a day. In 2015, our two teams conducted 187 usages to include tracks, building searches, narcotics sniffs, article/evidence search and suspect apprehensions.



PHARMACEUTICAL DRUG COLLECTION BOX

This program was begun late 2012 in cooperation from a grant through the Portage County Solid Waste Management (who provided the box) and after application and permission from the DEA (Drug Enforcement Agency). The program is designed to provide a collection box for the Kent community to easily dispose of unwanted or expired medication for safe disposal. A collection box is located at our parking lot for easy drop off. The program is managed by detective bureau personnel. In 2015, 170 pounds of pills were collected, along with other miscellaneous medications, anonymously to the collection box.



JUVENILE UNIT'S DIVERSION PROGRAM. Under the direction of Juvenile Counselor Jeff Langstaff, the Diversion Program in 2015 processed 34 juveniles through the program. The program provides first time offenders with an alternative process from entering the county's juvenile justice system for a non-serious criminal offense.

The Juvenile Unit Diversion Program included the following activities in 2015:

- 234 Mediation/ Problem-Solving Contacts
- 20 Drug/ Alcohol Interventions
- 16 Parental/ Family Consultations
- 3 Juveniles providing community service through the Diversion program. Community service averages 16-18 hours per juvenile.
- 21 Child/ Adolescent Mental Health Interventions
- 197 Adult Mental Health Interventions
- 18 Public Speaking Engagements
- 1 Internet Safety & Security Concern Issues

BICYCLE PATROL The bicycle patrol continues to be a tool used in community policing efforts and in crime prevention. There are currently 15 Officers trained in the utilization of the Police Bicycle and are encouraged to ride bicycles when staffing allows and are often an assigned position in CDBG patrols. We have found that it is effective during civil demonstrations and activities to include parades, Kent Heritage Festival, road races and public safety presentations. There are five Police Mountain Bicycles in this program.

DOG KENNEL The city Dog Kennel operates at 1220 Mogadore Rd. The Kennel is maintained by Kent Police personnel, but primarily the Animal Compliance Officers. The new kennel has three secure indoor/outdoor runs, heating, lighting, running water and sanitary drainage. The kennel can accommodate up to 6 dogs at any given time. In 2015, 82 dogs were impounded, 61 were returned to their owner, 12 were adopted back into the community and only 9 were taken to the county dog pound. In 2015, \$465 was collected in kennel fees.



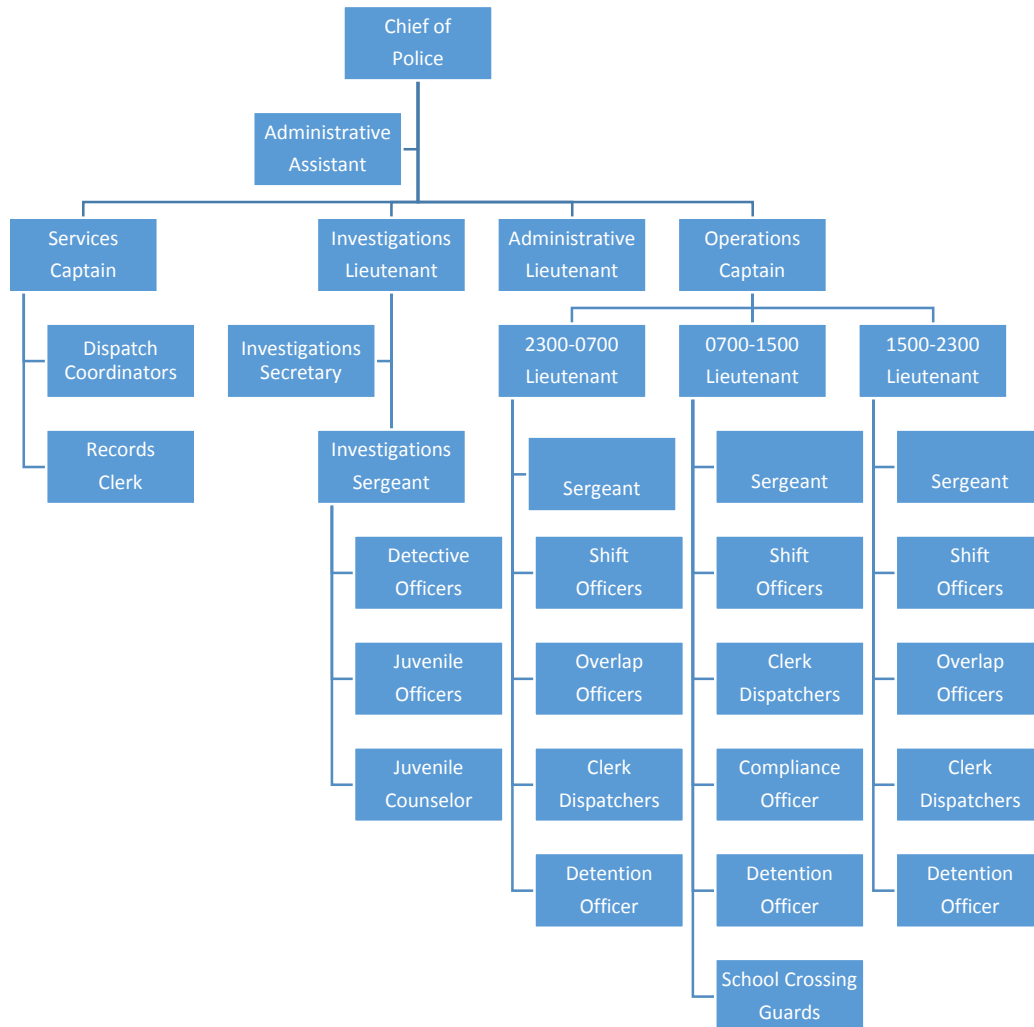
CITIZENS POLICE ACADEMY - The fifth Citizens Police Academy was held in the spring and consisted of a 12 week course involving an array of law enforcement topics. Students were instructed in patrol tactics, investigation techniques, police equipment and participated in a ride-along. 19 Kent area residents participated in the program meant to educate and garner community relations and debunk common misperceptions about police work. This program was well received and is slated for a sixth class in 2016.



PARTY REGISTRATION PROGRAM

2015 was our first full year with the Party Registration Program. The program allows party hosts and attendees have the opportunity to receive a telephone warning in the case of excessive noise or other nuisance activities. We had 101 registrants take advantage of this program. Of all those party registrations, zero received a citation for unlawful noise or nuisance party.

Organizational Structure



Administrative Responsibilities

CHIEF OF POLICE

SERVICES CAPTAIN

Records Management
Communications
Information Management
CAD System Operations
Inventory
Equipment
Physical Facility
Dispatch Coordination
Dispatch Training
Dispatch Scheduling
Performance Reports

OPERATIONS CAPTAIN

Patrol Operations
Personnel Reports
Patrol Scheduling
Personnel Complaints
Operations Coordination
Patrol Officer Training
Jail Operations
K-9 Operations
Bike Patrol Operations
Performance Reports
Special Events

ADMINISTRATIVE

LIEUTENANT

Crime Prevention
Planning & Research
Training & Records
Special Projects
Late Night Sales
Alarm Registry
Background Investigations
Neighborhood Liaison
Citizen Police Academy
Nuisance Ordinance
News Media Liaison
Salvage Titles

INVESTIGATIONS

LIEUTENANT

General Investigations
Special Investigations
Evidence Examination
Evidence Storage
Juvenile Programs
Drug Task Force Member
Federal & State Agency Liaison
Felony Offense Oversight
Major Crime Coordinator
Performance Reports

Training Summary

Training is an integral part of establishing high professional standards within all organizations. The Kent Police Department is committed to providing the highest level of training, within financial constraints, for all components of the organization. This commitment is accomplished by using internal (in-service) and external training resources to provide advanced training, career development opportunities, and specialized training related to new law enforcement technology.

In-Service Training:

In-Service training was provided to all members of the department throughout the year. Much of this training was conducted through daily Roll Call training. Areas of Roll Call training include: review of department rules, policies, procedures; changes in state law and local ordinances; court rulings and decisions; community policing techniques; homeland security; officer survival; investigation techniques; firearm related issues; crime prevention concepts; and many other job-related subjects.

- The police department also provided formalized and structured in-service training to police personnel. These training sessions were presented by state certified staff and department members in subject matters related to their fields of expertise. The 2015 in-service training included: Firearm training and certification for side arms, shotguns and patrol rifles.
- Less-than-lethal weapon training, use of force decision-making and documentation.
- Breath alcohol testing certification; electronic speed measuring devices and hazard communications

External Training:

External or outside training needs are met by sending personnel to specialized training academies, seminars, and workshops. These resources include both the private and public sector. Training needs are reviewed and determined for all components of the organization. The primary components are: administration, supervision/ management, investigations, records & dispatch, and patrol. The following courses represent specialized training members attended outside of the Department.

ADMINISTRATION: Budgeting & Finance for Police Departments, Domestic Violence with Lethality Factors, Advisory Services Consultant (Promotional Assessment) 1 & 2, Bridging the Gap, Finding Words (Mental Health), Public

Information Officer Awareness, Law Enforcement and Social Media, Public Records Law, Media Ethics, Judgmental Firearms Training, Advanced Social Media for Law Enforcement, Emergency Operations for Public Information Officers, Managing Patrol Operations, Management Rights and Legal Update.

SUPERVISION & MANAGEMENT: Special Purpose K9 Unit Evaluation, Finding Words (Mental Health), Patrol Related K9 Evaluation, Supervisor's Role During Pursuits, Bulletproof Warrior, Below 100 (Officer Deaths), Finding the Leader in You, FOP Women's Conference, Ohio Tactical Officers Association Conference, Taser Instructor, Supervisor Training and Education Program (STEP), High-Risk Warrant Service Tactics, Basic SWAT, Flash Bang Instructor, Crowd Control and Riot Operational Planning Course, Firearms Instructor: The Big Three, OTOA Conference: Sage Less-Lethal Instructor, Pepper ball Instructor/Armorer, Legal Update, Bulletproof Leadership, Ohio Jail Administrators Conference, Management Rights, Taser Instructor Recertification, Precision Rifle Operator, 2015 National Homeland Security Conference, Domestic Violence Legal Update, Statement Analysis Interviewing Techniques, Cellebrite Physical Analyst & Logical Operator (cell phone forensics), Introduction to Energy & Crush (traffic crash investigation), SORAT (single officer response to active threat instructor), Collisions with Buildings, Poles and Trees (crash investigation) and GCAT Crash Analysis Computer Training.

INVESTIGATIONS- Safeguarding Privacy, Civil Rights and Civil Liberties in Task Force Operations, Criminal Intelligence Systems Operating Policies, Executive Leadership, Statement Analysis Interviewing Techniques, Colt 1911 Pistol Armorer, Death Notification, Domestic Violence with Lethality Factors, The Science of Victimology, Interviewing the Crime Victim, Bridging the Gap, Hands on Electrical Fire/Arson Investigation, Pepper ball Instructor/Armorer, Campus Sexual Assault Investigation, Firearms Instructor Requalification, Finding Words, Fire and Arson Investigation, OIOA Educational Conference (evidence), Trace Evidence for Dummies, Auto Theft Investigations and Child Sex Trafficking.

RECORDS, DISPATCH, CIVILIAN PERSONNEL. Emergency Medical Dispatch Training, Complacency, Cannibalism and Critical Thinking, It's Your Ship, ABC's of Call Taking, TAC In-Service, Federal Equitable Sharing Training, Postvention! It's About Time (mental health), Critical Incident Team for Dispatchers and Ohio Amber Alert.

PATROL-Reid Interview & Interrogation Technique, Ohio Administrators Jail Conference, Juveniles and Corrections, Operation Street Smart Drug Education, Judgmental Driving Simulator, Judgmental Firearms Simulator, National Incident Management System (NIMS) training, Patrol Rifle Training,

Finding Words, School Resource Officer & DARE Conference, FOP Women's Conference, Domestic Violence with Lethality Factors, Street Smart Series: Concealment, Street Smart Series: Heroin, Essential Emergency Response Driving, Deescalating Mental Health Crisis, Advanced Emergency Vehicles Operations, Crime Scene Investigation, Death Notification, Career Survival: Overall Job Preparedness/Professional Policing and the Public, Sovereign Citizens, Outlaw Motorcycle Gangs, Responding to Sexual Assault, The Winning Edge, Core Criminal Investigation Training, Miranda Rights, Automobile Searches, OC Aerosol Spray Operator, Arrest Search & Seizure, Human Relations-Interacting with Special Needs, First Responder Training/Instructor/Autistic Children, Crisis Conflict Management, Advanced Motor Vehicle Operations, Missing Persons, RADAR & LIDAR, Remington 870 Shotgun Armorer, Credit Card Fraud, Legal Update, Narcotics Enforcement, Below 100 (officer deaths), Basic Crime Scene Investigations, Crimes Against Children, Crime Victim's Rights, Fraud Against Seniors, Rx Abuse: The Scope of the Problem, Bulletproof Mind, Darkness to Light-Child Sexual Abuse Prevention, Patrol Drug Operations, ARIDE (Advanced Roadside Impaired Driving Enforcement), Patrol Related K9 Evaluation, Special Purpose K9 Unit Evaluation, School Resource Officer Basic Training, Crisis Conflict Management, Understanding & Planning for School Bomb Incidents, Incident Response to Terrorist Bombing, Boarding Prisoners for Other Agencies, Restraint Chair, Use of Force Documentation, Sexual Harassment, Jail Operations, Infectious Diseases, Pre-Health Screening and Dispensing Medication.



Employee Recognition



20 YEAR SERVICE AWARD

Det. Eric Dreger
C/O Dana Frazier

15 YEAR SERVICE AWARD

Off. Benjamin Darrah
C/D Nikki Jacobs
C/D Elizabeth Sadowski

5 YEAR SERVICE AWARD

Administrative Assistant Patti Long

RETIREMENTS

Off. Lionel Harris
Off. Michael Stirm
Capt. Paul Canfield

PROMOTIONS

Capt. James Prusha
Lt. Nicholas Shearer
Sgt. Ryan Gaydosh

NEW FULL TIME HIRES

Off. Drake Oldham
Off. Mitchell Smith
C/O Marla Dunn
Off. Lenny Kunka
Off. Sean Driscoll

RESIGNATIONS

P/T C/D Kylie Weaver
Off. Chelsie Murray
Off. Andrew Green



Employee Recognition



SUPERVISOR OF THE YEAR

Lt. Robert Treharn

OFFICER OF THE YEAR

Off. Joshua Nelson

CIVILIAN OF THE YEAR

D/O Julie Loomis

MERITORIOUS SERVICE AWARD

Off. Matthew Brooks

Off. Matthew Butcher

ENFORCEMENT OFFICER OF THE YEAR

Off. Mitchell Smith

OVI OFFICER OF THE YEAR

Off. Michael Carnahan

FIREARM EXCELLENCE

Lt. Michael Lewis

Sgt. Ryan Gaydosh

Sgt. Richard Soika

Det. Eric Dreger

Off. Benjamin Darrah

Off. Matthew Butcher

Off. Jerry Schlosser

Off. Dominic Poe

Off. John Gormsen

Off. Drake Oldham

FITNESS EXCELLENCE

Off. Matthew Brooks

PERFECT WORK ATTENDANCE

Lt. Robert Treharn

Lt. Jennifer Ennemoser

Lt. Nicholas Shearer

Det. Karen Travis

Det. Paul Fafrak

Det. Michael Domer

Off. Dominic Poe

Kent Police – Kent State University Partnerships

The Kent Police and the Kent State University enjoy a cooperative working relationship which has proven to be mutually beneficial. Although this relationship has always existed, new initiatives and joint ventures are always investigated to improve the quality of service to the Kent and Kent State University communities.

Special Events - There are several special events that require KSU PD's assistance and cooperation to ensure a safe and tactically sound operation. Halloween has proven to be an unsanctioned event that continues to swell and sprawl within the city. We have received continued support from KSUPD when planning and staffing our police response. Other special events include sanctioned parades and road races that involve dual areas of responsibility and jurisdiction. Many of these events cater to the Kent State student population such as the *Homecoming Parade*, and the *Bowman Cup 5K Race*.

City of Kent and Kent State University Community Meetings - Police Administrators contribute to these Town/Gown meetings which are held monthly. These meetings involving KSU and Kent City administrators are meant to ensure cooperative working relationships and to maintain and improve town and gown relationships.

Training Opportunities – The City Manager, the Police Chief and KSU administrators all attended “Unconscious Bias” executive training sessions. The sessions were meant to test the applicability of the subject matter for all city employees and many KSU administrative staff members. These sessions proved to be beneficial and continued attendance will endure into 2016. The sessions are provided through KSU's Division of Diversity, Equity and Inclusion. Our department and KSUPD have been training together for years on various disciplines and enforcement tactics. This year we had the opportunity to have our officers in Active Shooter scenarios and Self-Care/Buddy Care.

C.A.D. and R.M.S. (Computer Aided Dispatch and Records Management System)

KPD and KSUPD collaborate in several ways in the areas of communications infrastructure, dispatch services and records management. For over thirty



years, both departments have dispatched police services on a shared VHF radio frequency. Each department owns and maintains interconnected portions of the same two-way radio system that provides radio and emergency warning siren coverage over the entire city. Kent PD also dispatches Kent FD for fire and EMS

services on campus as well. Since 2006, Kent PD has also shared KSUPD's computer-aided dispatch and records management platforms as well. This shared software platform allows officers from both departments instant access to the activity and databases of the other department via their dispatch centers, and desktop and vehicle mounted computers. The shared platform also allows either dispatch center to serve as a fully capable emergency backup for the other, should one suffer a catastrophic failure or natural disaster. These two shared systems have promoted further collaborations which include KSUPD monitoring burglar and fire alarm systems citywide via their certified central station, and a current effort toward a common set of standardized training and certification programs.

Joint Patrol District - This department and the Kent State University PD have mutual enforcement districts which are student populated areas within the city that also incorporate University owned properties. These areas include the Crain to Main triangle North of campus and the Lincoln, Summit, Depeyster, Main St. square to the West of campus. An agreement allows KSUPD officers to patrol, initiate enforcement and report incidents in these areas without involving or initiating mutual aid first. This initiative assists our department by allowing campus officers freedoms within these districts thus infusing officers into these populated areas. It is mutually beneficial to KSUPD to be responsive and responsible to their students and property directly.

Internship Program - The Kent Police Department recognizes and provides learning opportunities for persons studying in criminal justice and related fields through an internship program. Internships provide a valuable opportunity for qualified students to participate in the day-to-day functioning of a justice-related agency. Interns will observe police functions in a regulated and productive manner. We successfully had one Kent State University Criminal Justice student complete an internship this year.

New Program - The Kent Police Department, Kent State Police Department and Townhall II have formalized through an MOU our commitment to work together to provide prevention and awareness education around sexual violence and trauma-informed support to victims of sexual assault, intimate partner violence and stalking and to improve the overall respond to sexual violence at Kent State University and within the greater Kent community. The parties share the goal of preventing sexual violence on the Kent campus and in the community, and responding appropriately to those who have been victimized.

General Operational Data

	<u>2014</u>	<u>2015</u>	<u>% (+/-)</u>
Personnel Employed	62	63	1.61%
Calls for Service	20534	22949	11.76%
Fire Department Calls	3990	3997	0.18%
Ambulance Calls	3194	3153	-1.28%
Fire Calls	757	812	7.27%
Voided Run Numbers	39	32	-17.95%
Arrests, Total	2261	2208	-2.34%
Juvenile Arrests	194	137	-29.38%
OVI Arrests	187	186	-0.53%
Traffic Citations	3023	3366	11.35%
Parking Tickets	3814	8179	114.45%

Traffic Accident Trends

	<u>2012</u>	<u>2013</u>	<u>2014</u>	<u>2015</u>
Total Accident Complaints	843	861	815	1067
Property Damage Accidents	531	565	459	739
Injury Accidents	125	88	110	104
Private Property Accidents	147	163	148	169
Hit-Skip Accidents	40	45	59	52
OVI Related Accidents	29	20	33	21
Pedestrian Accidents	17	10	9	10
Pedestrian Fatalities	1	0	0	0
Fatal Accidents	2	0	2	0

Crime Trends and Clearances

	<u>2014</u>	<u>2015</u>	<u>TREND</u>	<u>CLEARED</u>	<u>% CLEARED</u>
Criminal Homicide	0	1	100.00%	0	-100.00%
Rape	2	2	0.00%	0	-100.00%
Robbery	15	9	-40.00%	4	-55.56%
Assault, Total	316	266	-15.82%	221	-16.92%
Aggravated	60	53	-11.67%	40	-24.53%
Simple	257	213	-17.12%	181	-15.02%
Burglary	103	127	23.30%	25	-80.31%
Larceny	458	357	-22.05%	46	-87.11%
Auto Theft	17	7	-58.82%	3	-57.14%
Arson	10	4	-60.00%	2	-50.00%
Human Trafficking, Commercial Sex Acts	0	0	0.00%	0	0.00%
Human Trafficking, Involuntary Servitude	0	0	0.00%	0	0.00%
Total	837	772	-7.77%	301	-61.01%

10 Year Crime Index

	2006	2007	2008	2009	2010	2011	2012	2013	2014	2015
Murder	0	0	0	1	1	2	1	1	0	1
Rape	8	7	7	12	8	6	7	5	2	2
Robbery	24	11	20	15	9	17	18	24	15	9
Assault	258	275	270	263	217	235	279	260	316	266
Burglary	179	186	165	129	156	146	168	134	103	127
Larceny	596	478	436	431	451	472	450	511	458	357
Auto Theft	30	33	38	28	24	32	18	16	17	7
Arson	47	45	39	32	19	16	10	4	10	4
Human Trafficking-Sex Acts	0	0	0	0	0	0	0	0	0	0
Human Trafficking-Servitude	0	0	0	0	0	0	0	0	0	0
Crime Index	1142	1035	975	911	885	926	951	955	921	773
Clearance Rate %	32.31	24.35	21.13	30.85	28.59	31.75	33.44	32.36	37.04	38.94
Domestic Violence Arrests	79	71	83	82	98	106	101	98	132	84
Accidents	885	840	797	818	839	856	843	861	815	1067
Injury	127	101	125	109	114	125	125	88	110	104
Fatal	2	0	0	0	0	0	1	0	2	0
Arrests	2354	2376	2615	2440	2110	2066	2391	2102	2261	2208
Juvenile Arrests	184	181	208	217	186	208	168	126	194	137
OVI Arrests	364	253	306	302	214	238	277	205	187	186
Citations	3071	3380	3669	3554	3247	2841	3393	2576	3023	3366
Calls	19491	19937	21674	21765	20669	19470	19680	18062	20534	22949

Enforcement by Officer

		TRAFFIC CITES	ARRESTS	OVI ARRESTS
CHIEF	LEE			
CAPT	COLE			
CAPT	CANFIELD			
CAPT	PRUSHA		3	
DET	TRAVIS		4	
DET	FAFRAK	1	5	
DET	DREGER		6	
DET	JACOBS	2	18	1
DET	DOMER	0	0	
DET	MARINO	4	8	
LT	TREHARN	1	3	
LT	WHEELER	89	15	2
LT	ENNEMOSER	2	6	
LT	LEWIS	10	5	
LT	SHEARER	59	35	9
SGT	SOIKA	0	9	
SGT	SHORT	60	32	1
SGT	ENNEMOSER	30	13	1
SGT	GAYDOSH	74	59	10
PTL/OFF	FLEMING	176	44	2
PTL/OFF	SCHLOSSER	108	76	21
PTL/OFF	ROMANOSKI	48	54	1
PTL/OFF	DARRAH	23	47	7
PTL/OFF	COLE	51	14	
PTL/OFF	GORMSEN	40	12	
PTL/OFF	FULLER	52	39	1
PTL/OFF	POE	99	98	11
PTL/OFF	BUTCHER	64	43	4
PTL/OFF	BERKEY	66	31	
PTL/OFF	LIPCSEY	23	107	5
PTL/OFF	BOWEN	255	147	7
PTL/OFF	HADAWAY	111	48	2
PTL/OFF	NELSON	124	103	5
PTL/OFF	HILBRUNER	265	100	3
PTL/OFF	AUCKLAND	233	141	10
PTL/OFF	LLEWELLYN	188	74	3
PTL/OFF	CARNAHAN	233	188	33
PTL/OFF	BROOKS	176	153	20
PTL/OFF	OLDHAM	232	69	3
PTL/OFF	SMITH	217	219	17
PTL/OFF	MURRAY	71	49	1
PTL/OFF	GREEN	55	53	3

Enforcement by Officer Continued

PTL/OFF	KUNKA	97	79	2
PTL/OFF	DRISCOLL	27	27	1
	OTHER		6	
	TOTAL	3366	2242	186

Traffic Cite by Type

License Suspended Child Support	1
Juvenile Delinquent/Traffic Offender	1
Expired Or Unlawful License Plates	1
Maximum Speed Limits ACDA	10
Driving In Marked Lanes Or Continuous Lines Of Traffic	1
No Rear Plate Light	3
Drivers And Passengers Required To Wear Seat Belts	11
Child Restraint System Usage	9
Muffler; Muffler Cutout; Excessive Smoke, Gas Or Noise	2
Headlights On Motor Vehicles And Motorcycles	1
Driving Unsafe Vehicle	3
Stopping After Accident Upon Property Other Than Street	1
Expired Or Unlawful License Plates	37
Display Of License Plates	1
Driving Under Suspension Or License Restriction	2
Driving With Temporary Instruction Permit; Curfew	5
Driver's License Or Commercial Driver's License Required	3
Speed Regulation On Public Cemetery Grounds	1
Stopping Vehicle; Slow Speed; Posted Minimum Speeds	2
Maximum Speed Limits; Assured Clear Distance Ahead	188
Squealing Tires, Peeling, Cracking Exhaust Noises	1
Failure To Control; Weaving; Full Time & Attention	3
One Way Streets & Rotary Traffic Islands	2
Driving Onto Roadway From Place Other Than Roadway: Duty To Yield	4
Right Of Way Of Public Safety Or Coroner's Vehicle	1
Operation Of Vehicle At Stop Signs	19
Right Of Way When Turning Left	5
Signals Before Changing Course, Turning Or Stopping	3
Starting And Backing Vehicles	1
U Turns Restricted	1
Turning At Intersections	16
Following Too Closely	1
Driving In Marked Lanes Or Continuous Lines Of Traffic	10
Flashing Traffic Signals	1
Traffic Control Signals/Right Turn On Red Light	2
Traffic Control Signals & Lights	30
Obedience To Traffic Control Devices	1
Comply With Lawful Order Of Police Officer	1
Operation Of MV Without Restraining Device	1
Rules For Marked Lanes	9
Expired Tag	1

Left Of Center	1
OVI Offense In Last 20 Years Refusal Of Breath Test	1
Physical Control Of A Vehicle Under The Influence	2
OVI - .17 Of 1Gm > Breath	1
12 Point DUS	3
DUS/ Rev	60
Operating Privilege Has Been Suspended	5
Child Restraint System Required	6
Fictitious Plates	4
Hit Skip - Off Roadway	1
Hit Skip - Roadway	1
Stop Lights	2
Lighted Lights Required	2
Headphones While Driving	1
Motor Cycle	2
Motorized Bicycle Rules	1
Stop Sign	12
Right Of Way (Turning Left)	2
Turn Signals	4
Starting/Backing	2
Driving Left Of Center Line	2
Lanes Of Travel	3
Speed	1
Speed Limits	7
Failure To Control	5
Reckless Operation (On Highway)	1
Tampering With Signs	1
Signal Lights	4
Obeying Traffic Control Device	5
Display OL Of Another	3
Display Fictitious/Altered OL	3
Temporary Permit Restriction	3
Reinstatement Fee Required	13
Fra Suspension	29
Wrongful Entrustment	2
No Operator's License	8
Display Plates	19
OVI - .08 Of 1 Gm > Breath	5
Driving While Under The Influence Of Alcohol/Drugs	32
Prohibitions Against Consumption In Motor Vehicle	2
Totals	657
Misdemeanor Citations	
Display Fictitious/Altered OL	1
Misdemeanor Citations Totals	1
Traffic	

OVI - Heroine Metabolite	1
Texting While Driving	5
Headlight Illumination Requirements - Protection Of Oncoming Drivers - High Beam Indicator	1
Expired Or Unlawful License Plates	2
Maximum Speed Limits ACDA	2
Right Of Way When Turning Left	1
Right Of Way Yielded By Pedestrian	4
Right Of Way At Intersections	2
No Operator Or Occupant Of A Motor Vehicle Shall Litter From A Moving Vehicle	1
Fail To Transfer Registration	2
Non-Working Traffic Signal	2
Hazardous Zones	4
No Rear Plate Light	12
Open Container	2
Reckless Operation; Control, Course And Speed	1
Riding Upon Seats; Handle Bars; Helmets And Glasses	1
Right Of Way On Sidewalk	1
Crossing Roadway Outside Crosswalk; Diagonal Crossings At Intersections	1
Right Of Way In Crosswalk	1
Loads Dropping Or Leaking; Removal Required	1
Drivers And Passengers Required To Wear Seat Belts	33
Child Restraint System Usage	1
Motor Vehicle Stop Lights	1
Rear View Mirror; Clear View To Front; Both Sides And Rear	1
Muffler; Muffler Cutout; Excessive Smoke, Gas Or Noise	3
Tail Light' Illumination Of Rear License Plate	2
Headlights On Motor Vehicles And Motorcycles	1
Lighted Lights; Measurement Of Distances And Headlights	4
Driving Unsafe Vehicle	3
Stopping After Accident Upon Property Other Than Street	3
Stopping After Accident Upon Streets; Collision With Unattended Vehicle	4
Use Of Illegal License Plates; Transfer Or Registration	2
Expired Or Unlawful License Plates	141
Display Of License Plates	7
Driving Without Complying With License Reinstatement Requirement	3
Driving Under Financial Responsibility Law Suspension Or Cancellation	4
Driving Under Suspension Or License Restriction	10
Driving With Temporary Instruction Permit; Curfew	12
Driver's License Or Commercial Driver's License Required	22
Reckless Operation On Streets, Public Or Private Property	2

Operation Without Reasonable Control	2
Street Racing	1
Stopping Vehicle; Slow Speed; Posted Minimum Speeds	1
Maximum Speed Limits; Assured Clear Distance Ahead	809
Operation In Willful Or Wanton Disregard Of Safety- On Highway	3
OVI - Under 21 YOA .02 - .08 Of 1% Blood	1
Driving While Under The Influence Of Alcohol/Drugs	1
Shortcutting	1
Driving Upon Sidewalks, Street Lawns Or Curbs	1
Squealing Tires, Peeling, Cracking Exhaust Noises	2
Failure To Control; Weaving; Full Time & Attention	44
One Way Streets & Rotary Traffic Islands	8
Driving Onto Roadway From Place Other Than Roadway: Duty To Yield	38
Operation Of Vehicle At Stop Signs	86
Right Of Way When Turning Left	34
Signals Before Changing Course, Turning Or Stopping	14
Starting And Backing Vehicles	25
U Turns Restricted	2
Turning At Intersections	57
Following Too Closely	2
Driving In Marked Lanes Or Continuous Lines Of Traffic	59
Hazardous Or No Passing Zones	4
Additional Restrictions On Driving Upon Left Side Of Roadway	2
Overtaking & Passing On Right	1
Overtaking, Passing To Left	1
Driving Upon Right Side Of Roadway	1
Traffic Control Signals & Lights	98
Obedience To Traffic Control Devices	7
Comply With Lawful Order Of Police Officer	1
Illegal U-Turn	4
Operation Of MV Without Restraining Device	5
Rules For Marked Lanes	46
Improper Left Turn	4
Expired Tag	4
Physical Control Of A Vehicle Under The Influence	7
OVI - .238 Of 1Gm > Urine	1
OVI - .17 Of 1Gm > Breath	2
12 Point DUS	22
DUS/ Rev	243
Operating Privilege Has Been Suspended	9
Child Restraint System Required	6
One-Way Highway	5
Furnish False Info To Avoid Citation	1
Fictitious Plates	9

Hit Skip - Off Roadway	7
Hit Skip - Roadway	9
Muffler	8
Stop Lights	3
Headlights	7
Lighted Lights Required	10
Unsafe Vehicle	2
Stopping For School Bus	2
Motor Cycle	1
Pickup Truck - Not 16	2
Pedestrian On Sidewalks	1
Right Of Way On Public Highway	8
Stop Sign	25
Right Of Way (Turning Left)	8
Turn Signals	34
Starting/Backing	2
Space Between Moving Vehicles	1
Driving Left Of Center Line	2
Lanes Of Travel	4
Assured Clear Distance	17
Speed Limits	51
Failure To Control	24
Reckless Operation (Off Highway)	3
Reckless Operation (On Highway)	9
Signal Lights	20
Obeying Traffic Control Device	9
Must Display OL	1
Display OL Of Another	22
Display Fictitious/Altered OL	8
Temporary Permit Restriction	11
Reinstatement Fee Required	66
Fra Suspension	118
No Motorcycle Endorsement	3
Wrongful Entrustment	9
No Operator's License	26
Display Plates	47
OVI - .204 Of 1% > Serum/Plasma	1
OVI - .08 Of 1 Gm > Breath	1
Driving While Under The Influence Of Alcohol/Drugs	143
Open Container Liquor - Operator Or Passenger Of Motor Vehicle	2
Open Container Liquor - State Liquor Store	1
Failure To Comply With Order Of Signal Of P.O. - Lawful Order Or Direction	2
Traffic Totals	2710
Totals	3368

Types of Calls for Service

Incident Type	Totals
911 Emergency Welfare Check	105
Abandoned Vehicle	11
Accident - Injury	82
Accident - Non-Roadway - Auto	164
Accident - Property Damage	861
Accidental Damage	11
Alarms - Auto	18
Alarms - Intrusion	522
Alarms - Panic	32
Alcohol Violations	18
Animal Complaint	400
Assault	135
Assist Fire Department	213
Assist Maintenance	1
Assist Motorist	14
Assist Other Agency	384
Assist Rescue Squad	12
Auto Repossessed	1
Auto Towed	68
Burglary/Breaking & Entering	156
Child Abuse	4
Civil Dispute	23
Community Policing Activity	1346
Complaints	7
Court	5
Criminal Damage	178
Criminal Mischief	21
Criminal Trespass	61
Custody Dispute	52
Disabled Vehicle	397
Disorderly Conduct	1198
DOA	2
Domestic Situations	382
Drug Offense - Miscellaneous	95
Escort	8
Escort - Money	24
Fireworks	34
Forgery	2
Found Property	220

Fraud	119
Harassment	96
Informational	100
Juvenile Complaints	187
K9	164
Larceny-Theft	478
Littering	7
Lost Property	81
Menacing	71
Message Delivery	54
Metro SWAT Assist	8
Minor Complaint	1
Miscellaneous	938
Missing Person	36
Motor Vehicle Theft	32
Mutual Aid - Given	115
Mutual Aid Received	1
Noise Complaint	346
Open Container	41
Parking Violation	379
Party Registration	101
Passing School Bus	4
Policy Violation	21
Premises Check	368
Property Removal/Standby	75
Protection Order	24
Psychiatric Situation	132
Public Indecency	1
Record Checks	14
Recovered Property	3
Ridership Program	21
Robbery	12
Roommate Dispute	21
Sex Offense	30
Speaking Engagement	35
Special Detail	831
Suicide - Attempt	14
Suspicious Circumstances	74
Suspicious Event	876
Suspicious Package	2
Suspicious Person	246
Suspicious Vehicle	176
Telecommunication Harassment	70

Traffic Citation	1
Traffic Stop	8298
Training	2
Unauthorized Use	9
Use of Force	88
Void	5
Warrant Entered	4
Warrant Service	456
Weapon Offenses	19
Welfare Check	393
Wireless E911 Check	1
Total:	22949

Parking Ticket Summary

	2014		2015		Difference	
	Total	Dollars	Total	Dollars	Total	Dollars
Citation Entered	1795	\$32,825.00	1747	\$31,810.00	-48	(\$1,015.00)
E Citation Entered	2024	\$37,455.00	6397	\$105,135.00	4373	\$67,680.00
TOTAL CITATION ENTERED:	3819	\$70,280.00	8144	\$136,945.00	4325	\$66,665.00
Voided Citation	146	\$3,480.00	540	\$13,875.00	394	\$10,395.00
NET ENTERED CITATIONS:	3673	\$66,800.00	7604	\$123,070.00	3931	\$56,270.00
First Late Fee Added	2085	\$20,850.00	4074	\$40,750.00	1989	\$19,900.00
Second Late Fee Added	1099	\$27,955.00	1942	\$49,065.00	843	\$21,110.00
TOTAL LATE FEES:	3184	\$48,805.00	6016	\$89,815.00	2832	\$41,010.00
NSF Check Fees Added	0	\$0.00	2	\$0.00	2	\$0.00
TOTAL ENTERED AND FEES ADDED:	6857	\$115,605.00		\$212,885.00		\$97,280.00
Partial Payment Received	88	\$1,785.00	198	\$3,485.00	110	\$1,700.00
Normal Full Payment	1523	\$38,286.00	2449	\$53,868.00	926	\$15,582.00
Web Payment	1565	\$39,715.00	3765	\$86,545.00	2200	\$46,830.00
DMV Collected Payment	0	\$0.00	0	\$0.00	0	\$0.00
TOTAL PAYMENTS:	3176	\$77,786.00	6412	\$143,898.00	3236	\$66,112.00
Payment Reversal	2	\$60.00	13	(\$375.00)	11	(\$435.00)
Refund	2	\$25.00	1	(\$25.00)	-1	(\$50.00)
NET RECEIPTS:		\$77,701.00		\$143,498.00		\$65,797.00
Partially Dismissed	347	\$5,195.00	376	\$5,710.00	29	\$515.00
Dismissed Citation	114	\$4,385.00	182	\$4,820.00	68	\$435.00
TOTAL DISMISSALS:	461	\$9,580.00	558	\$10,530.00	97	\$950.00
Administrative Review Upheld	77	\$1,820.00	165	\$3,465.00	88	\$1,645.00
Administrative Review Partial Dismiss	23	\$560.00	49	\$980.00	26	\$420.00
Administrative Review Dismissed	87	\$3,650.00	152	\$4,045.00	65	\$395.00
TOTAL REVIEWS:	164	\$6,030.00	317	\$8,490.00	153	\$2,460.00
DMV R/O Inquiry Sent	2572		5432		2860	
DMV R/O Inquiry Received	2751		5457		2706	
DMV R/O Reject	34		52		18	
Late Notice Sent	1615		3357		1742	
2nd Notice Sent	824		1510		686	

Parking Ticket by Type

Beyond 2 Hr Limit	35
Parking Where Sign Prohibits	2
Parked Facing Wrong Dir/Angle	13
No Parking 3-6 Am	32
Parking At A Yellow Curb	3
On A Sidewalk	10
Parking In A Fire Lane	142
Front Yard Parking	19
Parked Facing Wrong Direction	26
Parking During A Snow Ban	5
W/In 20 Ft Of A Crosswalk	88
W/In 10 Ft Of Fire Hydrant	8
Handicapped Parking Only	56
St Storage - Parked Over 24 Hrs	76
Upon Main Traveled Part Of St	18
Expired Validation Sticker	1833
Obstructing A Driveway	88
On A Curb	835
On Roadway Portion Of Thruway	4
W/In 30 Ft Of Stop Sign	1
On A Tree Lawn	3
Straddling 2 Parking Spaces	5
Expired Plates	49
More Than 12" From Curb	25
In A Crosswalk	2
Parking In Alley Or Narrow St	117
W/In 1 Ft Of Another Vehicle	2
Unattended Running Keys In Vehicle	1
Double Parking	1
Beyond 30 Min Limit	24
Improper Angle Parking	70
On A Bridge	97
Parked In Loading Zone	4
Parked In Loading Zone Beyond 30 Min	3
In Or Along Street Excavation	74
Parking With 10 Feet Of Fire Hydrant On Pp	2
Fictitious Plates	148
Within 30 Ft Of A Traffic Device	799

Parking & Obstructing A View	1
Within An Intersection	247
On Street Selling	3160
Parking In A Taxi Cab Stand	50
Parking Large Vehicle In Residential Area	1
Total	8179

Adult Arrest by Type

Abduction	1
Abusing Harmful Intoxicants	1
Aggravated Burglary	2
Aggravated Menacing	11
Aggravated Robbery	1
Assault	40
Assault on LEO	3
Attempted Burglary	1
Barking or Howling Dogs	1
Burglary	16
Burning Refuse	1
Carrying Concealed Weapon	7
Complicity	1
Conveyance of Weapon into Court	1
Criminal Damaging	14
Criminal Mischief	4
Criminal Simulation	1
Criminal Trespass	18
Cruelty to Animals	1
Dangerous Weapon Under Detention	1
Deception to Obtain a Dangerous Drug	1
Disorderly Conduct	207
Disrupting Public Service	1
Dogs, Cats and Other Animals at Large	5
Domestic Violence	69
Domestic Violence with Prior	10
Endangering Children	7
Fail to Disperse Nuisance Party	2
Failure to Appear Warrant	208
Failure to Comply with Order of Signal of PO	7
Failure to Disclose Personal Information	1
Falsification	9
Felonious Assault	7
Forgery	6
Held for Other Agency	2
Identity Fraud	2
Illegal Conveyance or Possession Weapons on School Premises	1
Illegal Possession of Chemicals for manufacture of Drugs	1

Illegal Use of Food Stamps	1
Improper Handling of Firearm in MV	2
Inducing Panic	1
Liquor Consumption in MV	3
Littering	1
Menacing	9
Menacing by Stalking	3
Misuse of Credit Card	1
Motor Vehicle Theft	1
Nuisance Party	8
Obstructing Official Business	36
Open Container	22
OVI	121
Parental Educational Neglect	1
Passing Bad Checks	1
Possession Controlled Substance	21
Possession Drug Abuse Instruments	68
Possession of Cocaine	6
Possession of Criminal Tools	4
Possession of Drugs	22
Possession of Heroin	12
Possession of Marijuana	124
Possession of Marijuana Paraphernalia	71
Prohibitions	90
Public Indecency	2
Receiving Stolen Property	19
Refusal to Sign Citation	1
Resisting Arrest	12
Robbery	2
Sexual Imposition	1
Taking ID of Another	4
Tampering with Evidence	2
Telecommunications Harassment	10
Theft	30
Theft of Motor Vehicle	1
Trafficking in Drugs	4
Trafficking Marijuana	1
Unauthorized Use of Motor Vehicle	5
Unlawful Noise	57
Unlawful Restraint	2
Vandalism	4
Violate Protection Order	13
Voyeurism	1

Warrant Other Agency
Weapon Under Disability

159
1

Juvenile Arrest by Type

Aggravated Robbery	1
Assault	9
B&E	1
Burglary	3
Carrying Concealed Weapon	5
Complicity	3
Criminal Damage	7
Criminal Mischief	4
Criminal Trespass	7
Curfew	9
Disorderly Conduct	4
Domestic Violence	5
False Report of Child Abuse	1
Falsification	1
Improper Firearms in MV	2
Juvenile Tobacco Use	1
Kidnapping	1
Misuse of Credit Card	4
No Operator's License	1
Obstructing Official Business	2
Open Container	1
Possession fo Drugs	1
Possession of Drug Paraphernalia	2
Possession of Marijuana	11
Possession of Marijuana Paraphernalia	7
Prohibitions	9
Stop Sign	1
Tampering With Evidence	3
Theft	7
Trafficking In Drugs	3
Unruly	6

Crime Reported to FBI

1 Classification of Offenses	2 <u>Offenses</u> Reported or Known to Police (Include "Unfounded"	3 Unfounded, I.E. False or Baseless Complaints	4 Number of Actual <u>Offenses</u> (Column 2 Minus Column 3) (Include	5 Total Offenses Cleared by Arrest or Exceptional Means	6 Number of Clearances Involving Only Persons Under 18 Years of
I . CRIMINAL HOMICIDE	1	0	1	0	0
a. Murder and nonnegligent manslaughter	12	0	0	0	0
b. Manslaughter by negligence	20	2	2	0	0
2. Forcible Rape Total	21	1	1	0	0
a. Rape by force	22	1	1	0	0
b. Attempts to commit forcible rape	30	9	9	4	0
3. Robbery Total	31	3	3	1	0
a. Firearm	32	0	0	0	0
b. Knife or cutting instrument	33	3	3	0	0
c. Other dangerous weapon	34	3	3	3	0
d. Strong-arm (hands, fist, feet, etc.)	40	266	0	220	28
4. Assault Total	41	6	6	6	0
a. Firearm	42	3	3	3	1
b. Knife or cutting instrument	43	12	12	10	2
c. Other dangerous weapon	44	32	32	21	8
d. Hands, fists, feet, etc. - aggravated injury	45	213	0	180	17
e. Other assaults - simple, not aggravated	50	126	0	25	3
5. Burglary Total	51	55	55	6	0
a. Forcible entry	52	64	64	17	3
b. Unlawful entry - no force	53	7	7	2	0
c. Attempted forcible entry	60	359	0	49	5
6. Larceny - Theft (except motor vehicle theft)	70	8	7	3	1
7. Motor Vehicle Theft Total	71	7	6	3	1
a. Autos	72	0	0	0	0
b. Trucks and buses	73	1	1	0	0
c. Other vehicles	74	771	1	301	37
GRAND TOTAL	75				

Classification		Number of Actual Offenses (Column 4 Return A)	Monetary Value of Property Stolen
1. Murder and Nonnegligent Manslaughter	12	1	0
2. Forcible Rape	20	2	0
3. ROBBERY			
A. Highway (streets, alleys, else.)	31	1	0
B. Commercial House (except C, D, F)	32	0	0
C. Gas. Service Station	33	0	0
D. Convenience Store	34	0	0
E. Robbery - Residence	35	4	1928
F. Bank	36	0	0
G. Miscellaneous	37	4	1203
TOTAL ROBBERY	30	9	3131
5. BURGLARY - BREAKING OR ENTERING			
A. Residence - Night (6 pm - 6 am)	51	28	39353.98
Residence - Day (6 am - 6 pm)	52	37	39740.99
Residence - Unknown	53	38	71128
B. Night (6 p.m. - 6 a.m.)	54	9	5110
Day (6 a.m. - 6 p.m.)	55	1	0
Unknown	56	13	13131.26
TOTAL BURGLARY	50	126	168464.23
6. LARCENY - THEFT (Except Motor Vehicle Theft)			
A. Over \$200.00	61	179	281110.07
B. \$50.00 to \$199	62	100	24453.21
C. Under \$50.00	63	80	2688.96
TOTAL LARCENY	60	359	308252.24
7. Motor Vehicle Theft	70	7	63696.5
GRAND TOTAL	77	504	543543.97
Additional Analysis of Larceny and Motor Vehicle Theft	81	5	3337.37
6x. NATURE OF LARCENIES UNDER ITEM 6			
A. Pocket-picking			
B. Purse-snatching	82	4	1606
C. Shoplifting	83	22	531.83
D. From Motor Vehicle (except E)	84	70	34365.37
E. Motor Vehicle Parts and Accessories	85	12	4959.2
F. Bicycles	86	20	4929
G. From Buildings (except C and H)	87	51	41064.67
H. From any Coin Operated Machines (parking meters, etc.)	88	0	0
I. All Other	89	175	217458.8
TOTAL LARCENIES (Same as Item 6)	80	359	308252.24
7x. MOTOR VEHICLES RECOVERED			
A. Stolen Locally And Recovered Locally	91	7	
B. Stolen Locally And Recovered By Other Jurisdictions	92	1	
Total Locally Stolen Motor Vehicles Recovered (a & b)	90	8	
C. Stolen In Other Jurisdictions And Recovered Locally	93	2	

Arsons

1 Property Classification	2 Offenses Reported or Known to Police (Include Unfounded and Attempts)	3 Unfounded, i.e. False or Baseless Complaints	4 Number of Actual Offenses (Column 2 Minus Column 3 Include Attempts)	5 Total Offenses Cleared by Arrest or Exceptional Means (Include Column 6)	6 Number of Clearances Involving Only Persons Under 18 Years of Age	7 Offenses Where Structures Uninhabited Abandoned, or not Normally in Use	8 Estimated Value of Property Damage
Residential Houses, Townhouses, Duplexes, etc.	0	0	0	0	0	0	0
Other Residential: Apartments, Motels, Hotels, Dormitories, Boarding Houses, etc.	2	0	2	0	0	1	10
Storage: Barns, Garages, Warehouses, etc.	0	0	0	0	0	0	0
Industrial/Manufacturing	0	0	0	0	0	0	0
Other Commercial: Stores, Restaurants, Offices, etc.	0	0	0	0	0	0	0
Community/Public: Churches, Jails, Schools, Colleges, Hospitals, etc.	0	0	0	0	0	0	0
All other Structure: Out Buildings, Monuments, Buildings Under Construction, etc.	0	0	0	0	0	0	0
TOTAL STRUCTURE	2	0	2	0	0	1	10
Motor Vehicles: Automobiles, Trucks, Buses, Motorcycles, etc.	0	0	0	0	0	0	0
Other Mobile Property: Trailers, Recreational Vehicles, Airplanes, Boats, etc.	0	0	0	0	0	0	0
TOTAL MOBILE	0	0	0	0	0	0	0
Total Other: Crops, Timber, Fences, Signs, etc.	2	0	2	1	0	0	501
GRAND TOTAL	4	0	4	1	0	1	511

Law Enforcement Officers Killed or Assaulted

Officers Assaulted (Do not include officers killed)														
Type of Activity	Total Assaults by Weapon A	Type of Weapon				Type of Assignment							Pol ice Assaults Cleared M	
		Firearm B	Knife or Other Cutting Instrument C	Other Dangerous Weapon D	Hands, Fists, Feet, etc. E	Two-Officer Vehicle F	One-Officer Vehicle G	Assisted H	Detective or Special Assign. I J		Other K L			
1. Responding to disturbance calls	1	0	0	1	0	0	0	1	0	0	0	0	1	
2. Burglaries in progress or pursuing burglary suspects	0	0	0	0	0	0	0	0	0	0	0	0	0	
3. Robberies in progress	0	0	0	0	0	0	0	0	0	0	0	0	0	
4. Attempting other arrests	2	0	0	0	2	0	2	0	0	0	0	0	1	
5. Civil Disorder (Riots, etc.)	0	0	0	0	0	0	0	0	0	0	0	0	0	
6. Handling, Transporting Prisoners	0	0	0	0	0	0	0	0	0	0	0	0	0	
7. Investigating Suspicious persons or circumstances	0	0	0	0	0	0	0	0	0	0	0	0	0	
8. Ambush - no warning	0	0	0	0	0	0	0	0	0	0	0	0	0	
9.	0	0	0	0	0	0	0	0	0	0	0	0	0	
10. Traffic Pursuits and stops	0	0	0	0	0	0	0	0	0	0	0	0	0	
11. All Other	1	0	0	1	0	0	0	1	0	0	0	0	1	
12. TOTAL	4	0	0	2	2	0	2	2	0	0	0	0	3	
13. Number with personal injury	3	0	0	2	1									
14. Number without personal injury	1	0	0	0	1									
AM	1	1	1	0	0									0
15. Time of assaults PM	0	0	0	0	1									0