

810 O/A MODULAR GUARD BOOTH

(8' x 10' ACTUAL SIZE)

OHIO DESIGN CODES

2007 OHIO BUILDING CODE
2007 OHIO MECHANICAL CODE
2007 OHIO PLUMBING CODE
2005 NATIONAL ELECTRICAL CODE

DESIGN LIVE LOADS

FLOOR: 50 PSF LIVE LOAD
10 PSF DEAD LOAD

ROOF: 40 PSF LIVE LOAD
10 PSF DEAD LOAD

CONSTRUCTION TYPE: 5B
OCCUPANCY/USE GROUP: B
BUILDING AREA: 80 SQ FT.
MINIMUM BUILDING
SET BACK: GREATER THAN 10 FEET TO A
COMMON OR ASSUMED PROPERTY LINE

SEISMIC ZONE: GROUP I, CATEGORY C
MAXIMUM WIND LOAD: 90 MPH, EXPOSURE C
OCCUPANT LOAD: 1

DRAWING INDEX

DRAWING NUMBER	DESCRIPTION
#1	SPECIFICATIONS
#2	ELEVATIONS
#3	FLOOR / ELECTRICAL PLAN & PLUMBING SCHEMATICS
#4	CROSS SECTION / BLOCKING POINTS PLAN

ADEQUATE HANDICAPPED REST ROOM FACILITIES TO HANDLE THE ADDITIONAL OCCUPANT LOAD CREATED BY THE ADDITION OF THIS BUILDING TO A SITE SHALL BE PROVIDED IN AN ADJACENT BUILDING ON THE SAME PROPERTY. THE LOCAL OFFICIAL HAVING JURISDICTION SHALL VERIFY THE EXISTING FACILITIES.

ACCESSIBILITY EXCEPTIONS:
PER SECTION 1103.2.7 RAISED AREAS. RAISED AREAS USED PRIMARILY FOR PURPOSES OF SECURITY, LIFE SAFETY OR FIRE SAFETY INCLUDING, BUT NOT LIMITED TO, OBSERVATION GALLERIES, PRISON GUARD TOWERS, FIRE TOWERS OR LIFEGUARD STANDS ARE NOT REQUIRED TO BE ACCESSIBLE OR TO BE SERVED BY AN ACCESSIBLE ROUTE.

PER SECTION 1103.2.10 SINGLE-OCCUPANT STRUCTURES. SINGLE-OCCUPANT STRUCTURES ACCESSED ONLY BY PASSAGEWAYS BELOW GRADE OR ELEVATED ABOVE GRADE INCLUDING, BUT NOT LIMITED TO, TOLL BOOTHS THAT ARE ACCESSED ONLY BY UNDERGROUND TUNNELS, ARE NOT REQUIRED TO BE ACCESSIBLE.

TITLE: COVER SHEET	DRAWN BY: R.M.	DATE: 3/17/09	JOB NO: 2007-373
MODEL: 810 O/A GUARD BOOTH	REV:	SCALE: 1/2" = 1'-0" NTS	DRAWING NO: CVR

TWIN MODULAR SERVICES, INC.
1001 LOWER LANDING RD, SUITE 607, BLACKWOOD, NJ 08012

NOT OFFERED

CHASSIS

TYPE: PERIMETER
MAIN BEAM: 6" JR. I-BEAM (4.4 lbs PER FT.)
CROSS MEMBERS: 6" JR. I-BEAM @ 24" O.C.
PAINT: ASPHALT BASED
STANDARD: 6" "C" CHANNEL 8.5 lbs PER FT.

FLOOR

INSULATION: NONE R-19 RIGID INSULATION
DECKING: 3/4" PLYWOOD, 24 O.C. SECURED DIRECTLY TO STEEL FRAME
OPTIONAL: 1/4" STEEL PLATE FLOOR W/ NON-SKIP EPOXY PAINT
COVERING: 1/8"x12"x12" VINYL TILE RESTROOM- 1/8" Aluminum Tread
TRIM: 4" VINYL COVE BASE Plate in Guard Area
MOISTURE BARRIER: TYVEK OR EQUAL

EXTERIOR WALLS

STUDS: 2"x4" STUD GRADE SPF @ 16" O.C.
BOTTOM PLATE: SINGLE 2"x4" #3 SPF
TOP PLATE SINGLE 2"x4" #3 SPF
WALL HEIGHT: 8'-3"
FINISHED CEILING HT: 7'-8" A.F.F.
INSULATION: R-13 FIBERGLASS KRAFT-BACKED BATTS
INT. WALL COVERING: 1/4" VINYL COVERED PANEL (CLASS III)
INT. WALL COVERING OPTION: 1/2" VINYL COVERED GYP. (CLASS I)

INTERIOR WALLS

STUDS: 2"x4" STUD GRADE SPF @ 16" O.C.
BOTTOM PLATE: SINGLE 2"x4" #3 SPF
TOP PLATE SINGLE 2"x4" #3 SPF
FINISHED CEILING HT: 7'-8" A.F.F.
INT. WALL COVERING: 1/4" VINYL COVERED PANEL (CLASS III)
DOORS: 24"x80" HOLLOW CORE WOOD DOOR, STD. LEVER PRIVACY HARDWARE

ROOF

TYPE: RAFTER 2X8 BOW TYPE WITH VENTILATION
STANDARD: 3" OVERHANG ALL SIDES
CEILING: 2'x4' T-GRID DROP CEILING @ 7'-8" A.F.F.
INSULATION: R-30 UNFACED FIBERGLASS BATTS
OPTION: 6" OVERHANG

ELECTRICAL

MAIN DISTRIBUTION PANEL: EXTERIOR (WEATHERPROOF) 100 AMP 120/240 VOLT SINGLE PHASE, 3 WIRE, 60 HZ. WITH GROUND
RACEWAY: MINIMUM #14/2 W/ GROUND 90 DEG. C. TYPE MC, COPPER
INTERIOR LIGHTS: 2'x4' TWO TUBE LAY-IN FLUORESCENT TROFFER PER PRINT
2'x2' TWO TUBE LAY-IN FLUORESCENT TROFFER PER PRINT
EXTERIOR LIGHTS: 150 WATT QUARTZ HALOGEN SECURITY LIGHT (WEATHERPROOF)
SWITCHES: 120 V. 15 AMP SINGLE POLE PER PRINT
RECEPTACLES: 120 V. 15 AMP DUPLEX RECEPTS PER PRINT
120 V. 15 AMP GFI DUPLEX RECEPTS PER PRINT
120 V. 15 AMP GFI, WEATHER PROOF, DUPLEX RECEPTS PER PRINT
EXHAUST FA 25 CFM FM EXHAUST FAN

(2) 250V 20 AMP DEDICATED CIRCUIT - AC/HEAT COMBO RECEPT - INCINOLET TOILET

PLUMBING

SUPPLY: TYPE 1
DWV: SCHEDULE 40
WATER CLOSET: 240V INCINOLET TOILET WITH VENT TO REAR EXTERIOR WALL WITH LOUVER FLAP CAP
LAVATORY: STANDARD
WATER HEATER: DELETE ALL: SINK, HOT WATER HEATER, WATER AND WASTE LINES

H.V.A.C.

HEATING: 240V 3000 Watt Wall Heater With Fan
AIR CONDITIONING: 110V, DEDICATED CIRCUIT, 8000 BTU WALL MOUNT,
STANDARD OPTION: 11,600 HEAT / AIR CONDITIONER COMBINATION UNIT, WALL MOUNTED 208/230 V

EXTERIOR WINDOWS & DOORS

DOORS: 36"x80" ALUM. DOOR, ALUM. FRAME, FOAM INSULATED W/ 14"x14" S.G., LEVER PASSAGE HARDWARE
STANDARD: 36"x80" STEEL DOOR W/ 22"x30" WINDOW (S.G.), CLOSER WHITE WITH NON CORROSIVE VINYL TRIM

WINDOWS: (5) 36"x39" HORIZONTAL SLIDER, ALUM. MILL FRAME, SINGLE GLAZE
(1) 36"x39" CLEAR TEMPERED GLASS - HORIZONTAL SLIDER, ALUM. MILL FRAME

STANDARD: (3) 36"x39" HORIZONTAL SLIDER, VINYL THERMAL INSULATED WINDOWS WITH NON CORROSIVE VINYL TRIM - WHITE
OPTION: (1) 24"x36" CLEAR TEMPERED GLASS TICKET WINDOW WITH STAINLESS STEEL SHELF, SPEAK-THRU & 1/2 ROUND TICKET SERVICE
OPTION: 36"x39" PICTURE WINDOW - NON OPERABLE, THERMAL PANE DIG GLAZING W/ VINYL FRAME OR SINGLE GLAZING, MILL FINISH FRAME

EXTERIOR FINISHES

SIDING: .019 ALUMINUM LITE GRAY
TRIM: .019 ALUMINUM DARK GRAY
WALL SHEATHING: 7/16" OSB OR CDX PLYWOOD, 16/0 SPAN INDEX RATING
ROOF SHEATHING: 1/2" CDX PLYWOOD, 16/0 SPAN RATING
ROOF: .45 EPDM RUBBER ROOFING

FURNITURE

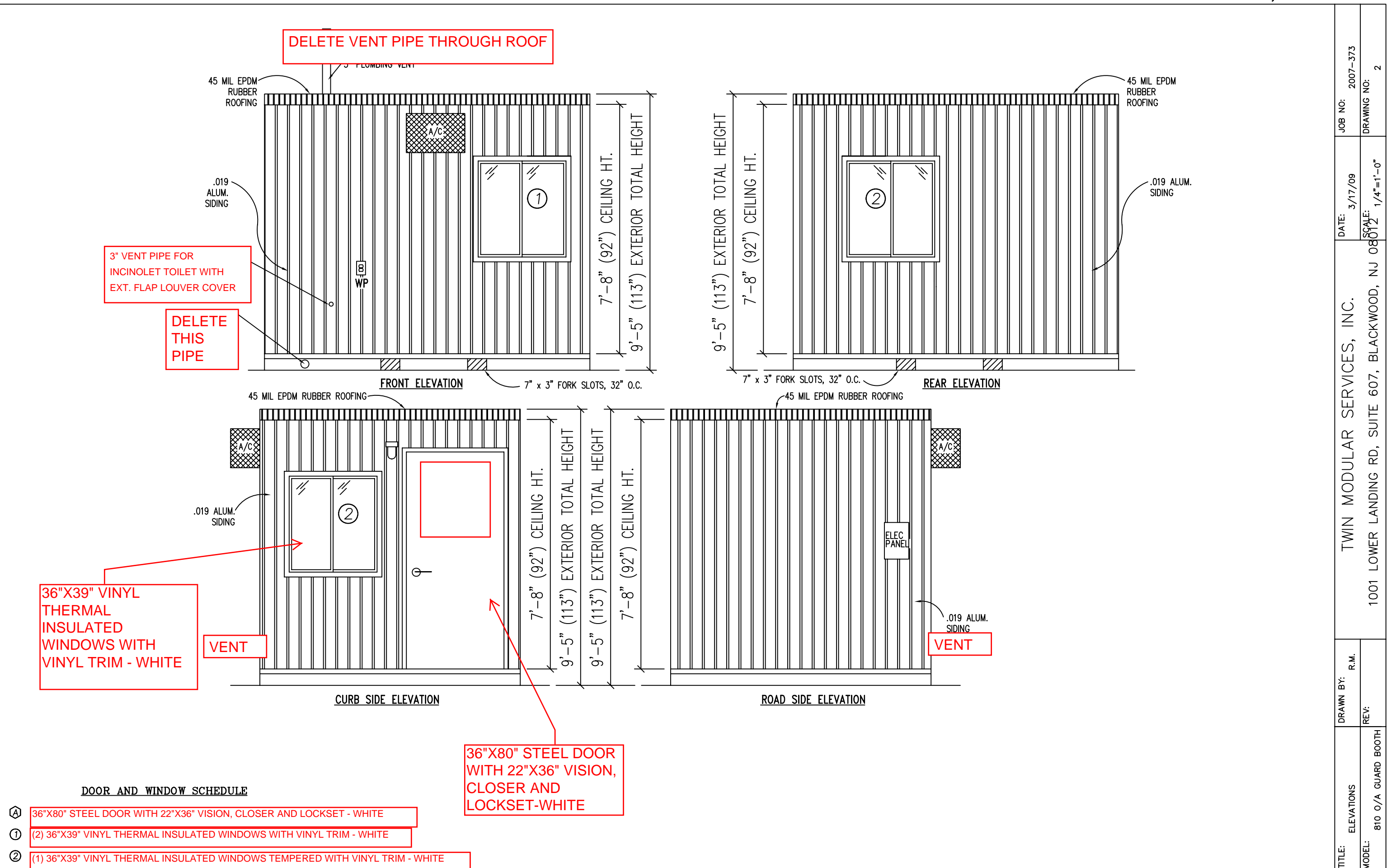
2'-0" x 7'-4" COUNTER TOP - WHITE MICA

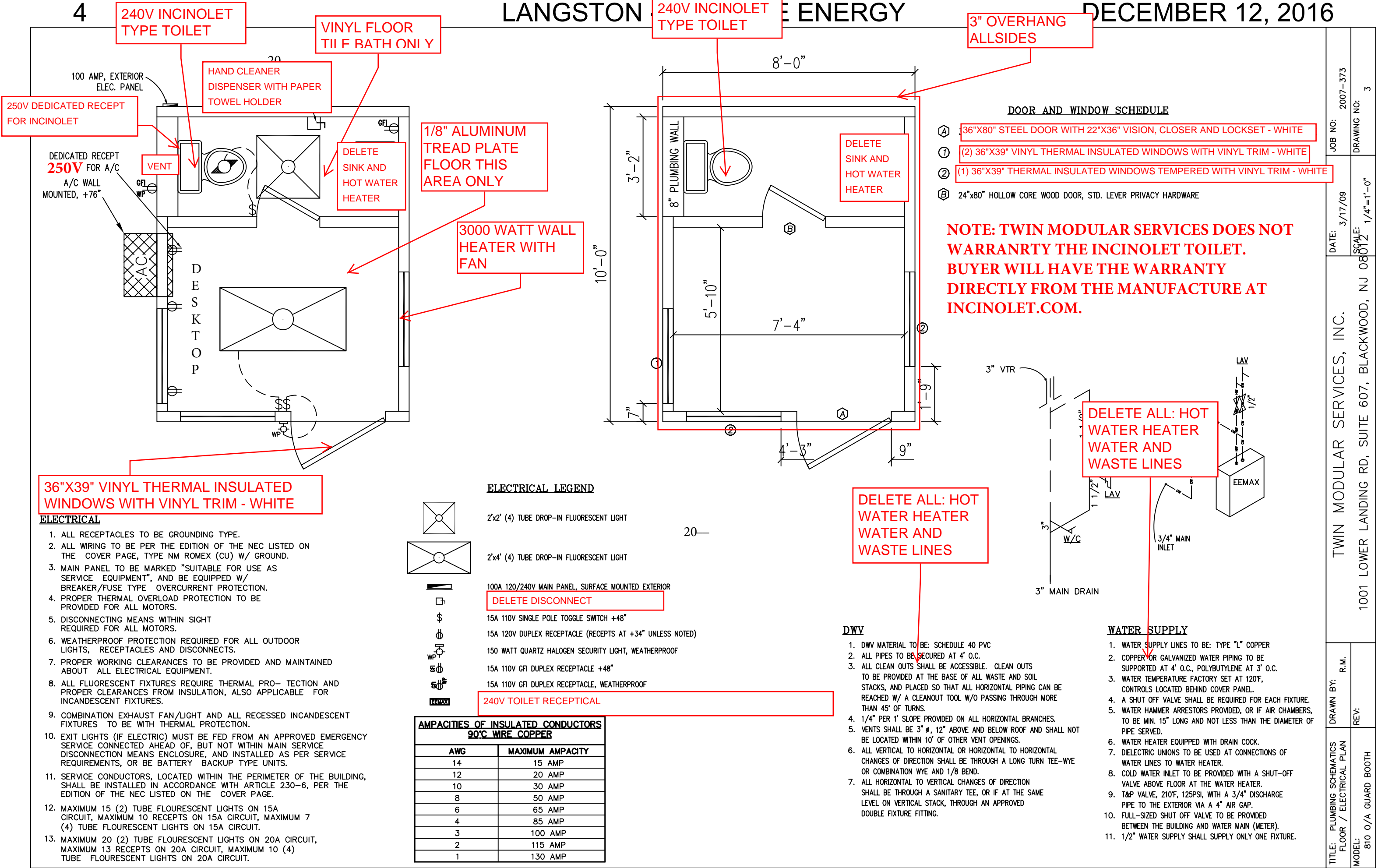
NOTE: TWIN MODULAR SERVICES DOES NOT
WARRANTY THE INCINOLET TOILET.
BUYER WILL HAVE THE WARRANTY
DIRECTLY FROM THE MANUFACTURE AT
INCINOLET.COM.

TITLE:	SPECIFICATIONS	DRAWN BY:	DATE:	JOB NO:
MODEL:	810 O/A GUARD BOOTH	R.M.	3/17/09	2007-373
		REV:	SCALE:	DRAWING NO:
			1/2" = 1'-0"	1

TWIN MODULAR SERVICES, INC.

1001 LOWER LANDING RD, SUITE 607, BLACKWOOD, NJ 08012





TWIN MODULAR SERVICES, INC.

R.M.

TITLE: PLUMBING SCHEMATICS FLOOR / ELECTRICAL PLAN

REV:

MODEL: 810 O/A GUARD BOOTH

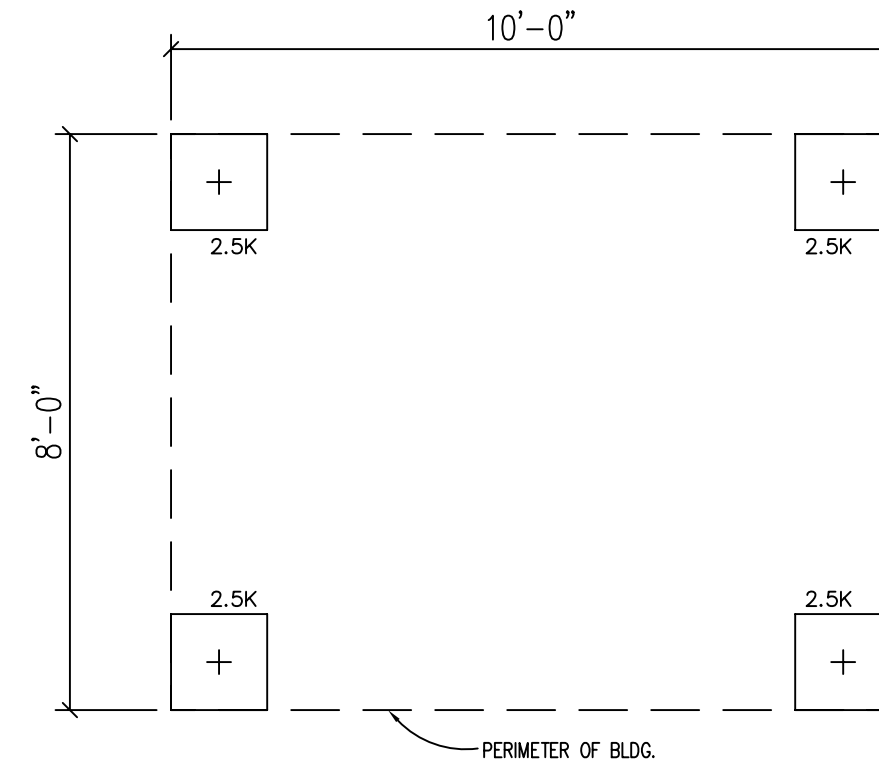
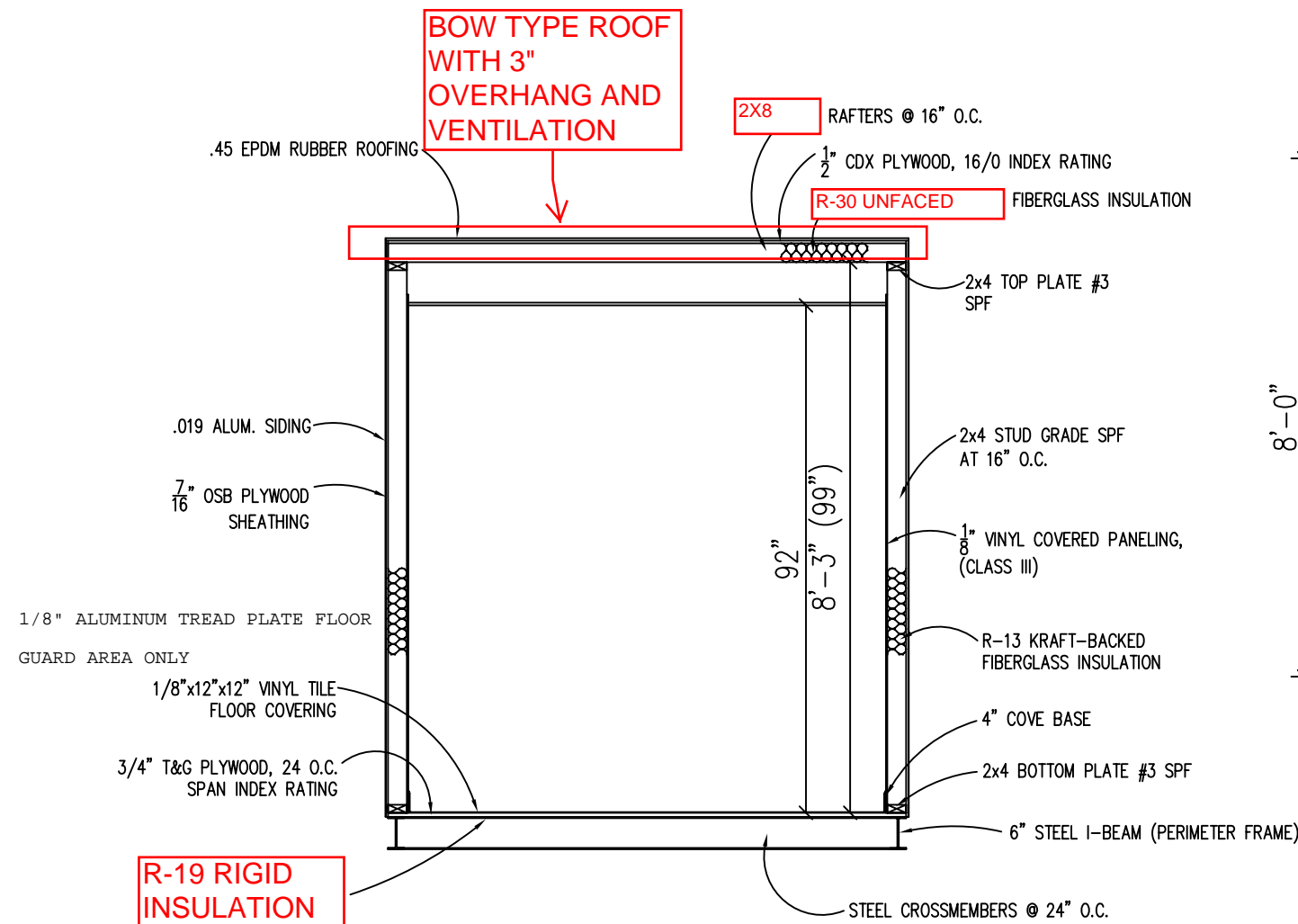
DATE: 3/17/09

SCALE: 1/4"=1'-0"

JOB NO: 2007-373

DRAWING NO: 3

1001 LOWER LANDING RD, SUITE 607, BLACKWOOD, NJ 08012



FOUNDATION & TIE-DOWN DESIGN BY OTHERS

FOUNDATION

1. THE PIER LOCATIONS SHOWN ON THIS PLAN ARE FOR THE PURPOSE OF IDENTIFYING THE LOCATION OF THE REQUIRED BLOCKING POINTS AND THE LOADS APPLIED AT EACH POINT FOR THIS BUILDING. FOUNDATION REQUIREMENTS ARE NOT KNOWN DUE TO VARYING SOIL CONDITIONS.
2. FOUNDATION DESIGN IS BY OTHERS. FOUNDATION REVIEW AND APPROVAL IS TO BE PERFORMED BY THE LOCAL OFFICIAL HAVING JURISDICTION.
3. CRAWL SPACE TO BE VENTILATED AT 1 SQ. FT. PER EACH 150 SQ. FT. OF CRAWL SPACE AREA TO BE VENTILATED.
4. PROVIDE POSITIVE DRAINAGE UNDER UNIT.
5. PROVIDE MINIMUM CRAWL SPACE ACCESS OF 22" x 24".
6. MINIMUM FOOTING DEPTH OF BELOW FROSTLINE AND PER LOCAL CONDITIONS.
7. PIER LOADS ARE SHOWN IN KIPS
8. 90 MPH WIND SPEED, EXPOSURE C
9. UNIT MAY BE SHIMMED AS NECESSARY WITH HARDWOOD SHIMS BETWEEN TOP OF PIER AND MODULAR UNIT FRAME
10. MINIMUM CONCRETE STRENGTH SHALL BE 3,000 PSI AT 28 DAYS

DESIGN LOADS

FLOOR LIVE LOAD	= 50 PSF
FLOOR DEAD LOAD	= 10 PSF
ROOF LIVE LOAD	= 40 PSF
ROOF DEAD LOAD	= 10 PSF
EXTERIOR WALL DEAD LOAD	= 42 PLF

FOUNDATION LEGEND

	INDICATES BLOCKING TO BOTTOM OF MAIN I-BEAM
--	---

BUILDING CODE

1. ATTIC VENTILATION SHALL NOT BE LESS THAN 1/150th OF THE HORIZONTAL AREA TO BE VENTILATED.
2. THE BUILDING EXTERIOR AND ALL FACILITIES WITHIN THE BUILDING SHALL BE IDENTIFIED WITH THE INTERNATIONAL SYMBOL OF ACCESSIBILITY.
3. OWNER/BUYER SHALL BE RESPONSIBLE FOR ON SITE BARRIER FREE PROVISIONS: STEPS, RAMPS, PARKING SIGNS, ETC. - BUILDING APPROACH (WALK OR RAMP) WITH A MINIMUM WIDTH OF 5' AND A GRADIENT OF NOT MORE THAN 1 FOOT IN 20 FEET.
4. ALL LOCKS TO BE UNLOCKABLE FROM THE INTERIOR WITHOUT THE USE OF A KEY OR SPECIAL KNOWLEDGE.
5. CORROSION RESISTANT FLASHING AT TOP AND SIDES OF DOORS, WINDOWS AND AT ROOF PENETRATIONS.
6. ALL GLAZING WITHIN 24" OF EXTERIOR PASSAGE DOORS AND IN PASSAGE DOORS, OR WITHIN 18" OF FLOOR TO BE "SAFETY GLAZED" AND SO MARKED.

TITLE: CROSS SECTION	DRAWN BY: R.M.	DATE: 3/17/09	JOB NO: 2007-373
MODEL: 810 O/A GUARD BOOTH	REV:	SCALE: 1/4"=1'-0"	DRAWING NO: 4

TWIN MODULAR SERVICES, INC.
1001 LOWER LANDING RD, SUITE 607, BLACKWOOD, NJ 08012