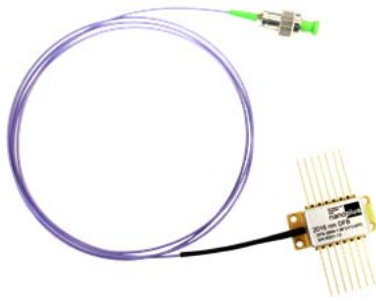


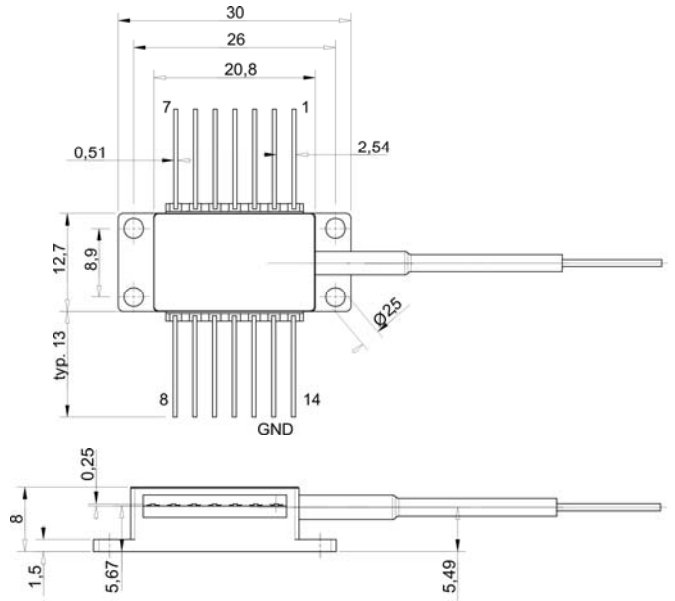


14-pin Butterfly Package with SM-fiber

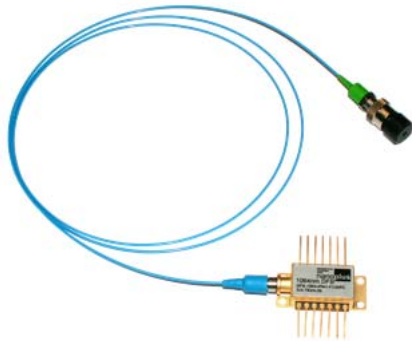


Pin Assignment

- | | |
|------------------|---------------------|
| 1: TEC anode (+) | 14: TEC cathode (-) |
| 2: thermistor | 13: case |
| 3: N/C | 12: N/C |
| 4: N/C | 11: N/C |
| 5: thermistor | 10: LD anode (+) |
| 6: N/C | 9: LD cathode (-) |
| 7: N/C | 8: N/C |

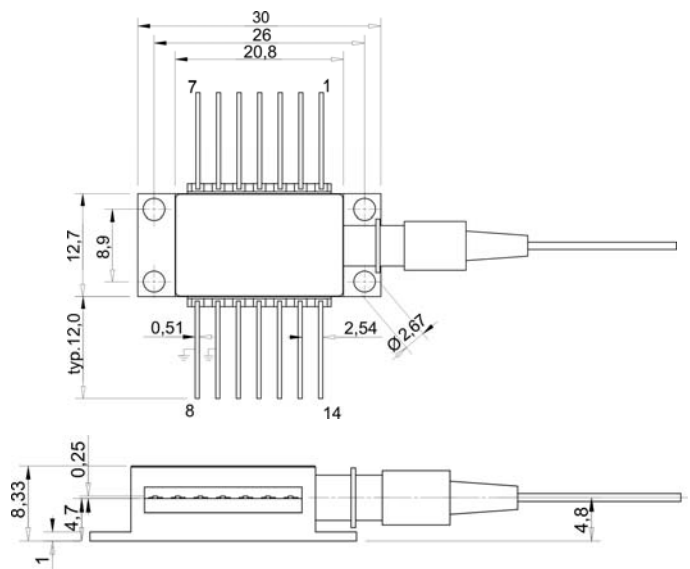


14-pin Butterfly Package with PM-fiber



Pin Assignment

- | | |
|--------------------|--------------------|
| 1: thermistor | 14: N/C |
| 2: thermistor | 13: N/C |
| 3: N/C | 12: LD cathode (-) |
| 4: N/C | 11: LD anode (+) |
| 5: N/C | 10: N/C |
| 6: TEC anode (+) | 9: case ground |
| 7: TEC cathode (-) | 8: case ground |



c-mount

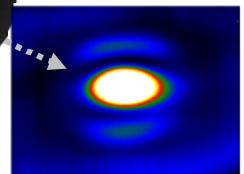
Accessories



sockets



cube + collimator



All dimensions are in mm.

We will be happy to answer further questions. Please contact us at victor.perez@nanoplus.com

nanoplus America, Inc.
777 29th Street
Suite 100
Boulder, CO, 80303
USA

phone: +1 - 720 - 453 - 2454
email: victor.perez@nanoplus.com
internet: www.nanoplus.us

© copyright nanoplus America, Inc. 2017, all rights reserved.
nanoplus America, Inc. reserves the right to modify these specifications
at any time without notice and is not liable for errors.