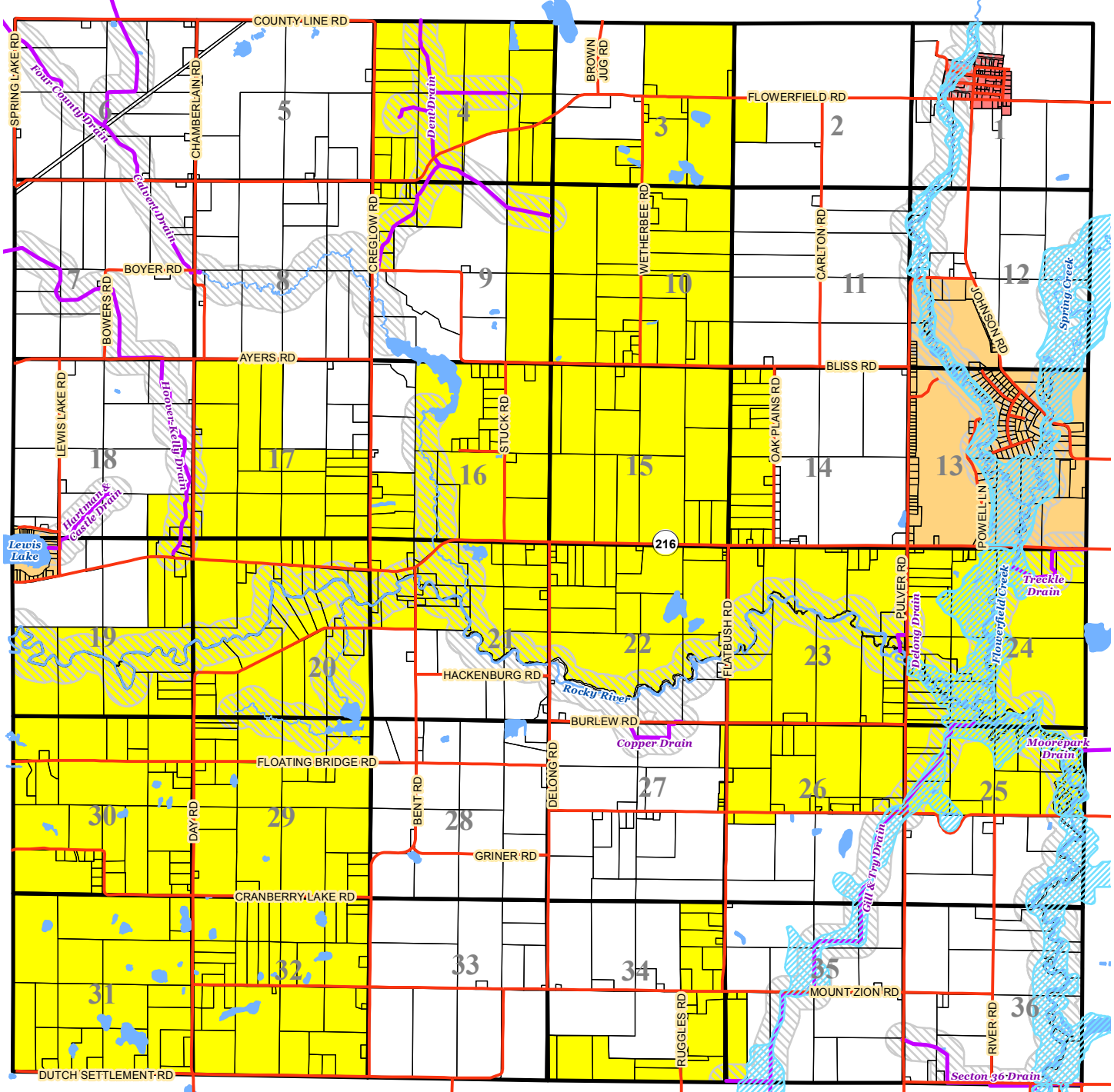


Flowerfield Township Zoning Map

St Joseph County, Michigan



	Agricultural (AG)
	Rural Residential (R-1)
	Medium Density Residential (R-2)
	High Density Residential (R-3)
	Business (B-1)
	Surface Water Overlay (SWO)
	D-FIRM Areas



The information contained herein has been supplied by the local unit of government. St Joseph County assumes no responsibility for the accuracy of the map or the districts herein depicted.

*Produced by: St. Joseph County
Land Resource Centre (269) 467-5576
Geographic Information Systems Department*

