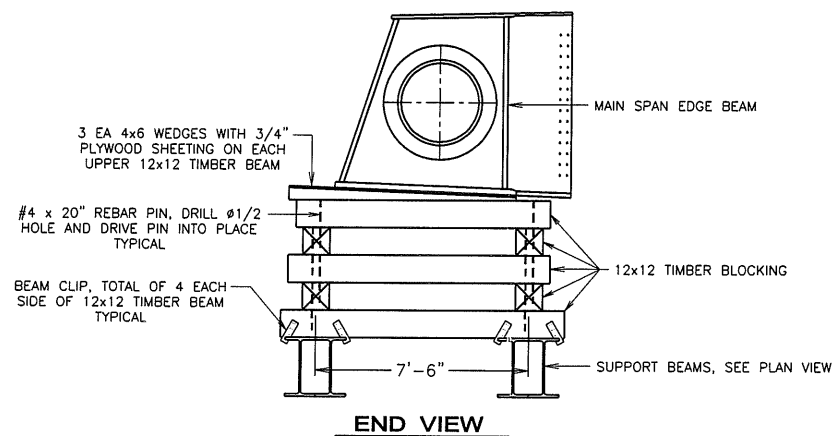
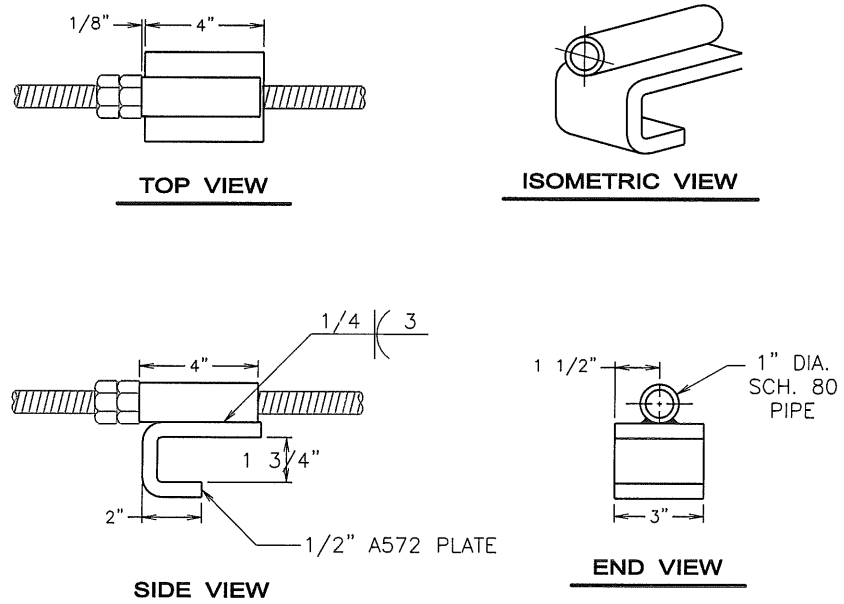


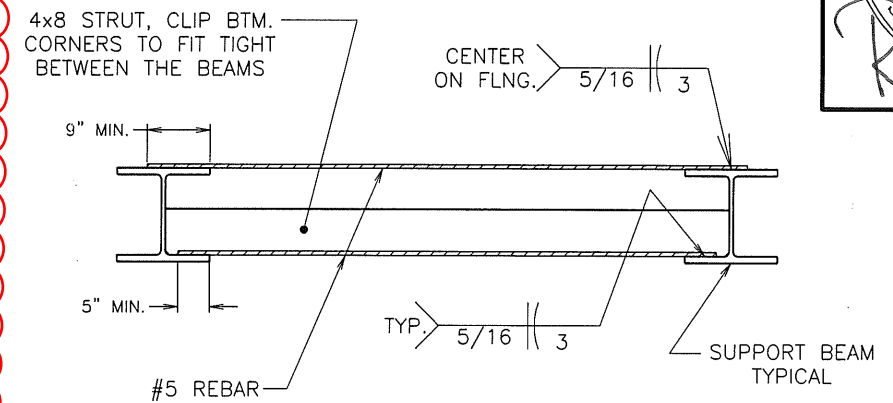
FILE: \\SFI (Shimmick_FCC_Impregilo JV)\2013-13 Gerald Desmond Bridge\Falsework\Main Span\Steel Erection FW.dwg



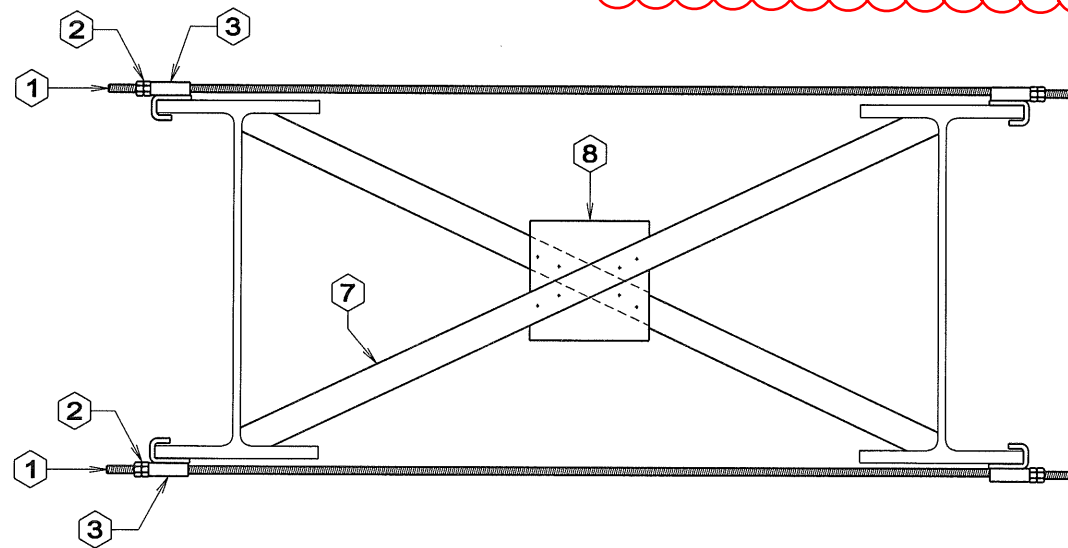
EB-1 EDGE GIRDER BLOCKING DETAIL



FC-1 FLANGE CLIP DETAIL

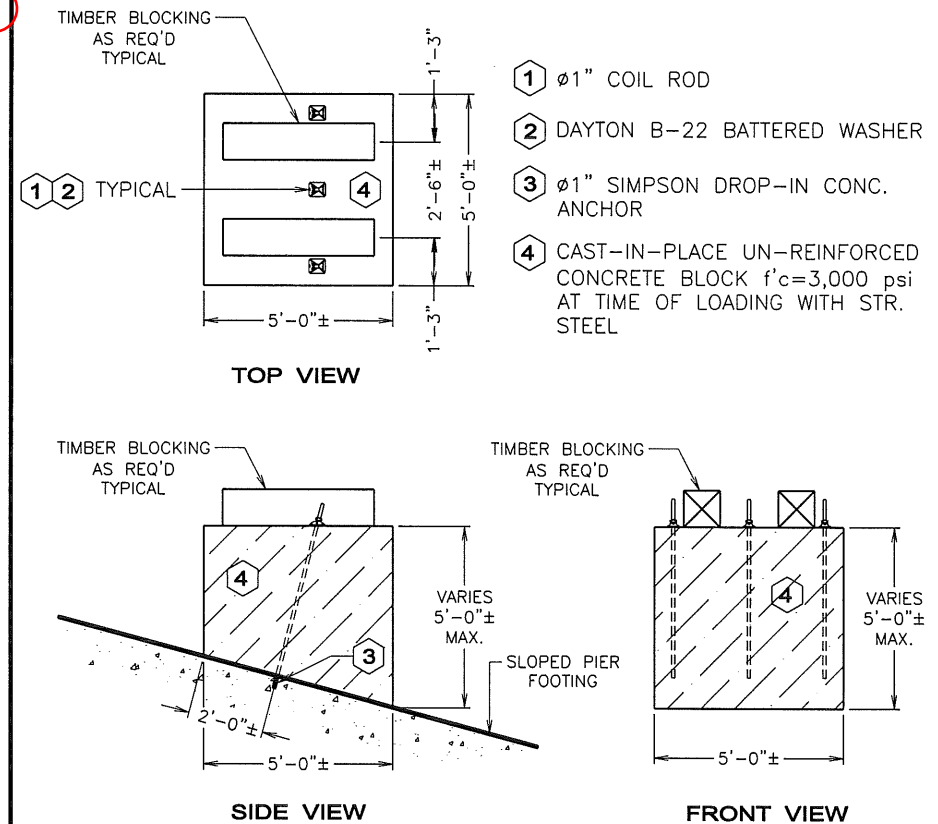


LB-1 LATERAL BEAM BRACING



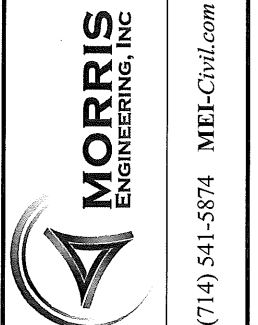
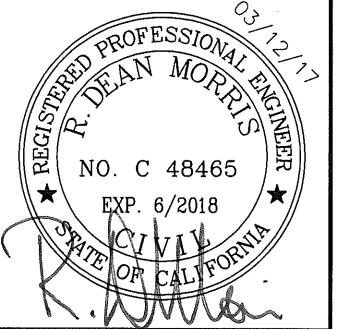
- 1 ϕ 3/4" DAYTON "B-12" COIL ROD (OR EQUAL)
- 2 ϕ 3/4" 2 EA. DAYTON "B-13" COIL NUTS (OR EQUAL) REQUIRED AT EACH END, TYPICAL. TORQUE TO 90 FT-LBS. AT THE CONTRACTOR'S OPTION 1 EA. DAYTON "B-25" HEAVY COIL NUT (OR EQUAL) MAY BE USED IN PLACE OF 2 EA. "B-13" NUTS.
- 3 FLANGE CLIP BRACKET AS PER DETAIL "FC-1"
- 4 (deleted)
- 5 NAILER BOARD, USE 2x6 (FLAT)
- 6 (deleted)
- 7 4x4 WOOD X-BRACING, CUT TO FIT AND WEDGE TIGHT.
- 8 5/8" PLYWOOD GUSSET AT INTERSECTION OF 4x4 X-BRACING, NAIL EACH 4x4 TO GUSSET WITH 4 EA. 16d NAILS.

LB-2 LATERAL BEAM BRACING - OPTION "B"



NOTE: CONC. BLOCKS SHALL BE REMOVED AFTER STEEL ERECTION. HOLES IN THE TOP OF THE PIER FOOTINGS SHALL BE REPAIRED AS REQ'D.

LP-1 LEVELING PADS ON PIER FTG.'S



SHIMMICK / FCC / IMPREGILO, JV
 PROJECT: GERALD DESMOND BRIDGE (REPLACE)
 DESCRIPTION: MAIN SPAN STR. STEEL ERECTION FALSEWORK

SCALE: VARIES
 BY: rdm
 DATE: 03/12/17
 REVISION #3
 JOB # 2013-13
 DRAWING No. D-2.3
 SHEET 11 OF 12