



AA THREAD
SINCE 1979

2023

PRODUCT CATALOG



**THREAD SEAL TAPE | ELECTRICAL TAPE | TRACER WIRE | INDUSTRIAL TAPE
POLYWRAP | PIPE WRAP TAPE | MARKING TAPE | DETECTABLE TAPE | SUPPLIES & MORE**

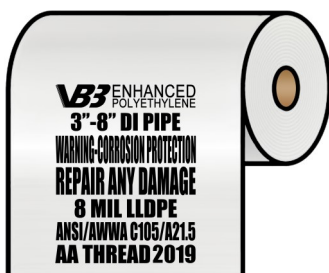
CATALOG 2023.1

Section 1—Thread Seal Tapes & Sealants	Page
PTFE Thread Seal Tapes—Made in USA	4-5
PTFE Thread Seal Tapes—Imported	6-7
Expanded PTFE Universal Joint Sealant (Uniseal)	7
Valve Stem Packing Products	7
 Section 2—Polyethylene Encasements (Polywrap)	 Page
All (8MIL & 12MIL) Linear Low Density Polywrap	8-11
4MIL Cross Laminated High Density	12-13
10MIL Cross Laminated High Density Joint Wrap	14
Polywrap C (Small Tubing Polyethylene)	14
VB3 Enhanced Polyethylene	15
 Section 3—Polywrap Accessories	 Page
Tapes and Supplies	16
 Section 4—Marking Tapes, Barricade Tapes & Tracer Wire	 Page
Detectable Underground Marking Tape	17
Non-detectable Underground Marking Tape	17
Barricade Tape	17
Tracer Wire	17
 Section 5—PVC Tapes	 Page
PVC Pipe Wrapping Tapes	18
PVC Electrical Tapes	19
 Section 6—Box Lok	 Page
Box Lok	20
 Section 7—Industrial Tapes & Supplies	 Page
Packaging & Industrial Tapes, Stretch Film and Supplies	21

VB3 ENHANCED POLYETHYLENE

Polyethylene Encasement (Polywrap) has long been studied and proven to be the most effective and economical way to provide exterior corrosion protection to ductile iron pipe, valves, and fittings. Corrosion protection methods have evolved over the years and recent enhanced polyethylene have been introduced to further combat corrosion concerns involving micro-organisms. Enhanced polyethylene gives you the same great protection with enhanced features:

- Fitting 3" - 60" DIP
- Multi-layer co-extruded LLDPE
- Anti-microbial biocide
- Volatile Corrosion Inhibitor (VCI)
- Greater protection over standard wraps
- Meets ANSI/AWWA C105/A21.5



More info on page 15

NEW PRODUCT ALERT: Polywrap C

Polywrap C is a flexible extruded polyethylene sleeve made specially for small diameter pipes. Like C105 Polywrap for Ductile Iron Pipe, this material is made to protect copper (and many other small diameter pipes) from exterior corrosion and other damage. This is great for direct buried pipe as well as pipe that will be encased in concrete. Polywrap C is a very cost effective way to protect your piping system while still very easy to install. Please contact us if you have any questions or need more information.



Find on page 14



New to our line up this year is the Valve Box Alignment Device (VBAD): BOX LOK. The Box Lok is your \$25 fix to a \$2,000 problem. The Box Lok is an easy solution to keeping your valve boxes from shifting in the ground, creating future headaches and unwanted work. Great for new or existing valve boxes, the Box Lok is an extremely affordable tool to prevent your valve boxes from ever shifting. It snaps around the opening nut, above the seal plate and can be used with Cast Iron boxes, 6" PVC risers and 8" PVC. Box Lok prices fluctuate with quantity and sizes so call now for a quote.

See page 20 for more information on Box Lok

New Warehouse Location!



AA Thread now has a new distribution warehouse in Spanish Fork, Utah. This new warehouse is geared more for our Polywrap and Waterworks customers. This will help us keep shipping times to the western region much lower. We are currently getting product shipped nationwide to most of our customers in 1-2 days. Like our Chicago-land warehouse, most orders are shipped out the same day.

PTFE Thread Seal Tapes—Made in USA

USA PTFE Thread Seal Tape

Item Number	Size	Thickness	Density	Color	Quantity/Case	Weight/Case	Description
10031	1/2"x260"	3.5 MIL	0.7	White	144	6 lbs	Standard
10051	1/2"x520"	3.5 MIL	0.7	White	144	8 lbs	Standard
10061	1/2"x600"	3.5 MIL	0.7	White	144	8 lbs	Standard
10071	1/2"x1296"	3.5 MIL	0.7	White	144	15 lbs	Standard
10081	3/4"x260"	3.5 MIL	0.7	White	144	9 lbs	Standard
10101	3/4"x520"	3.5 MIL	0.7	White	144	11 lbs	Standard
10121	3/4"x1296"	3.5 MIL	0.7	White	144	21 lbs	Standard
10141	1"x260"	3.5 MIL	0.7	White	144	7 lbs	Standard
10161	1"x520"	3.5 MIL	0.7	White	144	13 lbs	Standard
10181	1"x1296"	3.5 MIL	0.7	White	144	23 lbs	Standard
10311	1/4"x260"	4 MIL	1.2	White	144	5 lbs	High Density
10321	1/4"x520"	4 MIL	1.2	White	144	7 lbs	High Density
10331	1/2"x260"	4 MIL	1.2	White	144	7 lbs	High Density
10351	1/2"x520"	4 MIL	1.2	White	144	10 lbs	High Density
10371	1/2"x1296"	4 MIL	1.2	White	144	20 lbs	High Density
11381	3/4"x260"	4 MIL	1.2	White	144	10 lbs	High Density
10381	3/4"x520"	4 MIL	1.2	White	144	14 lbs	High Density
10391	1"x520"	4 MIL	1.2	White	144	14 lbs	High Density
10731	1/2"x260"	4 MIL	0.9	Yellow	144	8 lbs	Gas Line
10751	1/2"x520"	4 MIL	0.9	Yellow	144	9 lbs	Gas Line
10761	3/4"x260"	4 MIL	0.9	Yellow	144	10 lbs	Gas Line
10771	3/4"x520"	4 MIL	0.9	Yellow	144	16 lbs	Gas Line
10781	1"x260"	4 MIL	0.9	Yellow	144	10 lbs	Gas Line
10791	1"x520"	4 MIL	0.9	Yellow	144	16 lbs	Gas Line
13031	1/2"x260"	4 MIL	1.6	Yellow	144	9 lbs	Gas Line Full Den.
13051	1/2"x520"	4 MIL	1.6	Yellow	144	12 lbs	Gas Line Full Den.
13081	3/4"x260"	4 MIL	1.6	Yellow	144	13 lbs	Gas Line Full Den.
13101	3/4"x520"	4 MIL	1.6	Yellow	144	19 lbs	Gas Line Full Den.

PTFE Thread Seal Tapes—Made in USA

USA PTFE Thread Seal Tape

Item Number	Size	Thickness	Density	Color	Quantity/Case	Weight/Case	Description
14031	1/2"x260"	4 MIL	1.2	Gray	144	7 lbs	Stainless Steel
14051	1/2"x520"	4 MIL	1.2	Gray	144	10 lbs	Stainless Steel
14081	3/4"x260"	4 MIL	1.2	Gray	144	11 lbs	Stainless Steel
14101	3/4"x520"	4 MIL	1.2	Gray	144	14 lbs	Stainless Steel
14141	1"x260"	4 MIL	1.2	Gray	144	12 lbs	Stainless Steel
14161	1"x520"	4 MIL	1.2	Gray	144	14 lbs	Stainless Steel
15031	1/2"x260"	4 MIL	1.2	Pink	144	7 lbs	Plumbers
15051	1/2"x520"	4 MIL	1.2	Pink	144	11 lbs	Plumbers
15081	3/4"x260"	4 MIL	1.2	Pink	144	10 lbs	Plumbers
15141	1"x260"	4 MIL	1.2	Pink	144	12 lbs	Plumbers
16031	1/2"x260"	4 MIL	1.2	Green	144	7 lbs	Oxygen Line
16051	1/2"x520"	4 MIL	1.2	Green	144	11 lbs	Oxygen Line
16101	3/4"x520"	4 MIL	1.2	Green	144	14 lbs	Oxygen Line



PTFE Thread Seal Tapes—Imported



China PTFE Thread Seal Tape

Item Number	Size	Thickness	Density	Color	Quantity/Case	Weight/Case	Description
40211C	1/2"x60"	3.5 MIL	0.4	White	1500	9 lbs	Standard
40021C	1/2"x100"	3.5 MIL	0.4	White	500	10 lbs	Standard
40031C	1/2"x260"	3.5 MIL	0.4	White	500	13 lbs	Standard
40051C	1/2"x520"	3.5 MIL	0.4	White	500	15 lbs	Standard
40071C	1/2"x1296"	3.5 MIL	0.4	White	250	19 lbs	Standard
40081C	3/4"x260"	3.5 MIL	0.4	White	350	12 lbs	Standard
40101C	3/4"x520"	3.5 MIL	0.4	White	350	14 lbs	Standard
40121C	3/4"x1296"	3.5 MIL	0.4	White	150	15 lbs	Standard
40141C	1"x260"	3.5 MIL	0.4	White	250	12 lbs	Standard
40161C	1"x520"	3.5 MIL	0.4	White	250	14 lbs	Standard
40181C	1"x1296"	3.5 MIL	0.4	White	150	16 lbs	Standard
42151C	1 1/2"x520"	3.5 MIL	0.4	White	150	14 lbs	Standard
42161C	2"x520"	3.5 MIL	0.4	White	150	16 lbs	Standard
40011C	1/4"x520"	4 MIL	0.8	White	500	15 lbs	High Density
40251C	1/2"x520"	4 MIL	0.8	White	500	24 lbs	High Density
40261C	3/4"x520"	4 MIL	0.8	White	350	24 lbs	High Density
43031C	1/2"x260"	4 MIL	0.9	Yellow	500	18 lbs	Gas Line
43051C	1/2"x520"	4 MIL	0.9	Yellow	500	26 lbs	Gas Line
43101C	3/4"x520"	4 MIL	0.9	Yellow	350	21 lbs	Gas Line
46031C	1/2"x260"	3.5 MIL	1.2	Green	500	24 lbs	Oxygen Line
46051C	1/2"x520"	3.5 MIL	1.2	Green	500	38 lbs	Oxygen Line
46101C	3/4"x520"	3.5 MIL	1.2	Green	350	34 lbs	Oxygen Line
45031C	1/2"x260"	4 MIL	0.9	Pink	500	18 lbs	Plumbers
40291C	1/2"x1368"	3.5 MIL	0.8	Purple	250	32 lbs	Blue Seal
40292C	3/4"x1368"	3.5 MIL	0.8	Purple	150	27 lbs	Blue Seal
40293C	1"x1296"	3.5 MIL	0.8	Purple	150	29 lbs	Blue Seal



PTFE Thread Seal Tapes & Sealants—Imported

Italy PTFE Thread Seal Tape

Item Number	Size	Thickness	Density	Color	Quantity/Case	Weight/Case	Description
50011I	1/4"x520"	3.5 MIL	0.35	White	500	15 lbs	Standard
50211I	1/2"x60"	3.5 MIL	0.35	White	1500	7 lbs	Standard
50021I	1/2"x100"	3.5 MIL	0.35	White	500	11 lbs	Standard
50031I	1/2"x260"	3.5 MIL	0.35	White	500	13 lbs	Standard
50041I	1/2"x310"	3.5 MIL	0.35	White	500	14 lbs	Standard
50051I	1/2"x520"	3.5 MIL	0.35	White	500	14 lbs	Standard
50061I	1/2"x610"	3.5 MIL	0.35	White	500	18 lbs	Standard
50071I	1/2"x1296"	3.5 MIL	0.35	White	185	15 lbs	Standard
50081I	3/4"x260"	3.5 MIL	0.35	White	350	13 lbs	Standard
50101I	3/4"x520"	3.5 MIL	0.35	White	350	16 lbs	Standard
50121I	3/4"x1296"	3.5 MIL	0.35	White	150	16 lbs	Standard
50141I	1"x260"	3.5 MIL	0.35	White	250	13 lbs	Standard
50161I	1"x520"	3.5 MIL	0.35	White	250	16 lbs	Standard
50181I	1"x1296"	3.5 MIL	0.35	White	140	15 lbs	Standard
53031I	1/2"x260"	3.5 MIL	1.1	Yellow	500	22 lbs	Gas Line
53081I	3/4"x260"	3.5 MIL	1.1	Yellow	350	21 lbs	Gas Line
53141I	1"x260"	3.5 MIL	1.1	Yellow	250	19 lbs	Gas Line

Expanded PTFE Universal Joint Sealant

Item Number	Size	Thickness	Description
70070	1/8"x100'	0.085"	Uniseal 891
70071	3/16"x75'	0.12"	Uniseal 891
70072	1/4"x50'	0.13"	Uniseal 891
70073	3/8"x25'	0.14"	Uniseal 891
70074	1/2"x15'	0.20"	Uniseal 891
70074-30	1/2"x30'	0.20"	Uniseal 891
70074-150	1/2"x150'	0.20"	Uniseal 891
70075	5/8"x15'	0.29"	Uniseal 891
70076	3/4"x15'	0.31"	Uniseal 891
70077	1"x15'	0.34"	Uniseal 891

Valve Stem Packing

Item Number	Size	Quantity/Bag	Description
90024	3/32"x24"	100	PTFE
90001	3/32"x24"	300	Graphite



Linear Low Density Polyethylene Encasements (Polywrap) For Ductile Iron Pipe

Our Polywrap is made of 100% virgin polyethylene plus 3% carbon black for coloring and ultraviolet protection. It is gauged to 8.5 MIL (0.0085") to maintain the minimum of 8 MIL as required by the AWWA standards. The material is available in perforated lengths of 20' and 22' for easy tear off and no waste at roll ends while on the job site.

As with all protection methods, proper installation is vital to the success of the Polywrap. Care needs to be used when installing this item so it is not damaged. If part of the wrap is damaged repair it with tape if possible. Any additional questions about this product or how to install it contact our staff and we will be happy to assist you in any way possible.



Physical Properties of Finished Film

TEST	AWWA C105/A21.5 Min Req.	AA Thread's Film*
Tensile Strength	3,600 psi (ASTM D882)	MD 4,595 psi
	MD & TD	TD 4,410 psi
Elongation	700% min. (ASTM D882)	MD 1,073%
	MD & TD	TD 1,126%
Dielectric Strength	800 V/MIL (ASTM D149)	1,946 V/MIL
Impact Resistance	600 grams (ASTM D1709)	1,189 grams
Propagation Tear Resistance	2,550 grams of force (ASTM D1922)	MD 4,462 gf
	MD & TD	TD 5,539 gf
Thickness	8 MIL (0.008")	8.5 MIL (0.0085")

*Tests are averages performed from an independent lab result on our 8MIL Linear Low Density Polywrap

Linear Low Density Polyethylene Encasements (Polywrap) For Ductile Iron Pipe



8 MIL Black Polywrap Pipe Sleeves

Conforms to: ANSI/AWWA C105/A21.5

Item Number	Pipe Dia.	Tube Size	Weight/Case
70001	Up to 8"	20"x400'/20' Perf.	57 lbs
70002	Up to 8"	20"x440'/22' Perf.	63 lbs
70002-220	Up to 8"	20"x220'/22' Perf.	32 lbs
70003	10"	24"x400'/20' Perf.	68 lbs
70004	10"	24"x440'/22' Perf.	76 lbs
70227-20	12"	27"x400'/22' Perf.	77 lbs
70227-22	12"	27"x440'/22' Perf.	85 lbs
70227-22-220	12"	27"x220'/22' Perf.	43 lbs
70005	12" to 14"	30"x200'/20' Perf.	43 lbs
70006	12" to 14"	30"x220'/22' Perf.	47 lbs
70234-22	16"	34"x220'/22' Perf.	53 lbs
70007	16" to 18"	37"x200'/20' Perf.	53 lbs
70008	16" to 18"	37"x220'/22' Perf.	58 lbs
70241-22	20"	41"x220'/22' Perf.	64 lbs
70009	20" to 24"	54"x200'/20' Perf.	77 lbs
70010	20" to 24"	54"x220'/22' Perf.	84 lbs
70011	30"	67"x140'/20' Perf.	67 lbs
70014	30"	67"x154'/22' Perf.	74 lbs
70015	36" to 42"	81"x110'/22' Perf.	63 lbs
70013	48"	95"x110'/22' Perf.	75 lbs
70018	54" to 60"	108"x110'/22' Perf.	84 lbs

Linear Low Density Polyethylene Encasements (Polywrap) For Ductile Iron Pipe

8 MIL Blue Polywrap Pipe Sleeves

Conforms to: ANSI/AWWA C105/A21.5



Item Number	Pipe Dia.	Tube Size	Weight/Case
77020BLU	Up to 8"	20"x400' No Perf.	57 lbs
77020-22BLU	Up to 8"	20"x440'/22' Perf.	63 lbs
77027-22BLU	10" to 12"	27"x440'/22' Perf.	85 lbs
77030BLU	10" to 14"	30"x200' No Perf.	43 lbs
77030-22BLU	10" to 14"	30"x220'/22' Perf.	47 lbs
77037BLU	16" to 18"	37"x200' No Perf.	53 lbs
77054BLU	20" to 24"	54"x200' No Perf.	77 lbs
77067-22BLU	30"	67"x154'22' Perf.	74 lbs
77081BLU	30" to 42"	81"x110' No Perf.	63 lbs

8 MIL Green Polywrap Pipe Sleeves

Conforms to: ANSI/AWWA C105/A21.5



Item Number	Pipe Dia.	Tube Size	Weight/Case
70001GRN	Up to 8"	20"x300' No Perf.	41 lbs
70005GRN	10" to 14"	30"x200' No Perf.	43 lbs
70007GRN	16" to 18"	37"x200' No Perf.	53 lbs
70009GRN	20" to 24"	54"x200' No Perf.	77 lbs
70015GRN	30" to 42"	81"x110' No Perf.	63 lbs

8 MIL Purple Polywrap Pipe Sleeves

Conforms to: ANSI/AWWA C105/A21.5



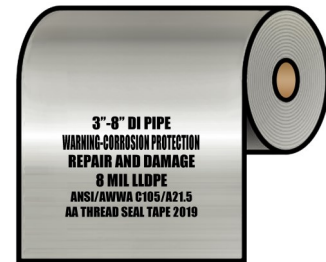
Item Number	Pipe Dia.	Tube Size	Weight/Case
73001PUR	Up to 8"	20"x200' No Perf.	29 lbs
73005PUR	10" to 14"	30"x200' No Perf.	43 lbs
73007PUR	16" to 18"	37"x200' No Perf.	53 lbs
73009PUR	20" to 24"	54"x200' No Perf.	77 lbs
73015PUR	30" to 42"	81"x110' No Perf.	63 lbs

Linear Low Density Polyethylene Encasements (Polywrap) For Ductile Iron Pipe

8 MIL Clear Polywrap Pipe Sleeves

Conforms to: ANSI/AWWA C105/A21.5

Item Number	Pipe Dia.	Tube Size	Weight/Case
72000	All	3'x100' Flat Sheet	14 lbs
72002	Up to 8"	20"x440'/22' Perf.	63 lbs
72006	10" to 14"	30"x220'/22' Perf.	47 lbs



12 MIL Clear Polywrap Pipe Sleeves

Conforms to: ANSI/AWWA C105/A21.5

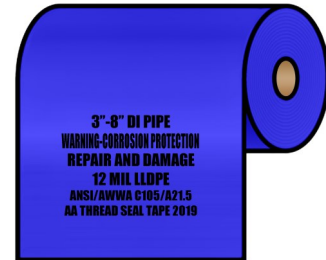
Item Number	Pipe Dia.	Tube Size	Weight/Case
76002	Up to 8"	20"x220'/22' Perf.	47 lbs
76006	10" to 14"	30"x220'/22' Perf.	72 lbs
76008	16" to 18"	37"x220'/22' Perf.	87 lbs
76010	20" to 24"	54"x110'/22' Perf.	63 lbs
76014	30"	67"x110'/22' Perf.	78 lbs
76015	36" to 42"	81"x110'/22' Perf.	95 lbs



12 MIL Blue Polywrap Pipe Sleeves

Conforms to: ANSI/AWWA C105/A21.5

Item Number	Pipe Dia.	Tube Size	Weight/Case
76002-BLUE	Up to 8"	20"x220'/22' Perf.	47 lbs
76006-BLUE	10" to 14"	30"x220'/22' Perf.	72 lbs
76008-BLUE	16" to 18"	37"x220'/22' Perf.	87 lbs
76010-BLUE	20" to 24"	54"x110'/22' Perf.	63 lbs
76015-BLUE	30" to 42"	81"x110'/22' Perf.	95 lbs



Cross Laminated High Density Polyethylene Encasements (Polywrap) For Ductile Iron Pipe

This film is extruded from virgin high density polyethylene resins, molecularly oriented through a stretching process. The two single ply layers are laminated bi-directionally. The grain orientation of each layer are run at a 90 degree angle to each other, which produces a high strength material. It is then finished through a heated ribbing process, which produces a very strong and durable finished product. Our material surpasses all of the specifications of the ANSI/AWWA C105/A21.5 standards and has exceptional resistance to punctures and tears that may occur during the installation process.



Physical Properties of Finished Film

TEST	AWWA C105/A21.5 Min Req.	AA Thread's Film*
Tensile Strength	6,300 psi (ASTM D882)	MD 7,593 psi
	MD & TD	TD 8,986 psi
Elongation	100% min. (ASTM D882)	MD 615.3%
	MD & TD	TD 388.7%
Dielectric Strength	800 V/MIL (ASTM D149)	1,306 V/MIL
Impact Resistance	800 grams (ASTM D1709)	868 grams
Propagation Tear	250 grams of force (ASTM D1922)	MD 771 gf
Resistance	MD & TD	TD 972 gf
Thickness	4 MIL (0.004")	4 MIL (0.004")

*Tests are averages performed from an independent lab result on our 4MIL Cross Laminated High Density Polywrap

Cross Laminated High Density Polyethylene Encasements (Polywrap) For Ductile Iron Pipe

4 MIL Black X-Lam Polywrap Pipe Sleeves

Conforms to: ANSI/AWWA C105/A21.5

Item Number	Pipe Dia.	Tube Size	Weight/Case
75002	Up to 8"	20"x440' No Perf.	38 lbs
75005	10" to 14"	30"x220' No Perf.	28 lbs
75008	16" to 20"	41"x200' No Perf.	35 lbs
75010	20" to 24"	54"x200' No Perf.	46 lbs
75011	30"	67"x200' No Perf.	57 lbs
75012	36" to 42"	81"x100' No Perf.	35 lbs
75013	48"	95"x100' No Perf.	48 lbs
75014	54" to 60"	108"x100' No Perf.	54 lbs



Cross Laminated High Density Polyethylene Joint Wrap

Our Joint Wrap is made of 10 MIL Cross Laminated High Density Polyethylene and is the strongest protection available against punctures and tears where they are most likely to happen due to sharp metal from sheared bolt-heads on mechanical joints. The material is two and a half times thicker than the 4 MIL Cross Laminated HDPE used for ductile iron pipe. It exceeds all the minimum requirements for the ANSI/AWWA C105/A21.5 standards. The material is made from 100% virgin high density Polyethylene resins that are stretched in machine and transverse directions and laminated with their grain orientation in opposite directions for strength and durability.



10 MIL Joint Wrap Sheets

Conforms to: ANSI/AWWA C105/A21.5

Item Number	Sheet Size	Weight/Case
75030JW	30"x100'	13 lbs

10 MIL Joint Wrap Sleeves

Conforms to: ANSI/AWWA C105/A21.5

Item Number	Pipe Dia.	Tube Size	Weight/Case
75130JW	6" to 10"	30"x100'	26 lbs
75141JW	12" to 16"	41"x100'	35 lbs
75154JW	18" to 24"	54"x100'	46 lbs

Physical Properties of Finished Film

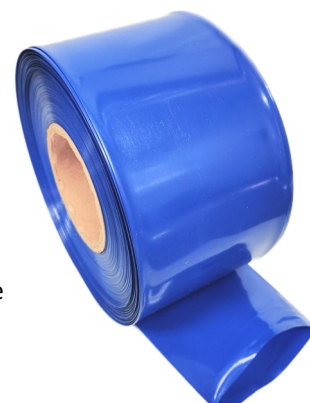
TEST	AWWA C105/ A21.5 Min Req.	AA Thread's Film
Elongation	100% min. (ASTM D882) MD & TD	MD 800% TD 800%
Impact resistance	800 grams (ASTM D1709)	1,000 grams
Propagation Puncture Tear	250 grams of force (ASTM D1922) MD & TD	MD 15,000 grams TD 15,000 grams
Thickness	4 MIL (0.004")	10 MIL (0.010")

Polywrap C (Narrow Polywrap For Small Diameter Pipe)

Item Number	Pipe Dia.	Sleeve Size	Color	Rolls/Case
78046-BLU	Up to 2"	4"x200' 6 MIL	Blue	4
78044-BLU	Up to 2"	4"x200' 4 MIL	Blue	4
78044-RED	Up to 2"	4"x200' 4 MIL	Red	4
78046-CLR	Up to 2"	4"x200' 6 MIL	Clear	4
78046-PUR	Up to 2"	4"x200' 6 MIL	Purple	4
78048-PUR	Up to 2"	4"x200' 8 MIL Printed "DO NOT DRINK"	Purple	4

Other sizes, and styles may be available. Contact your rep with any questions

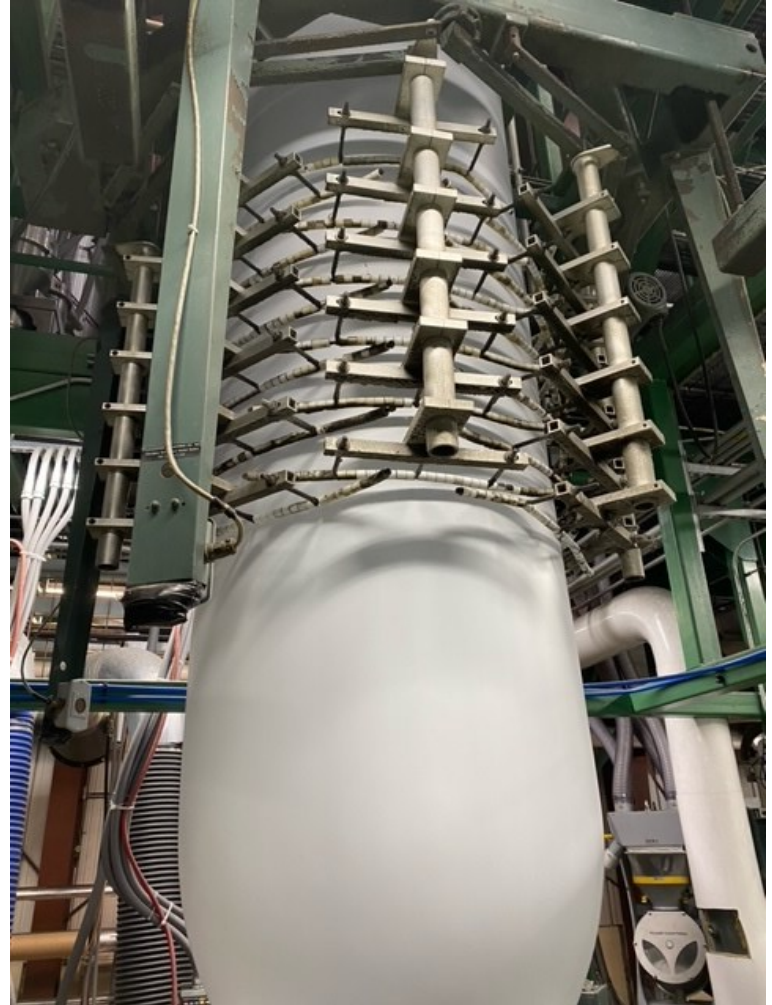
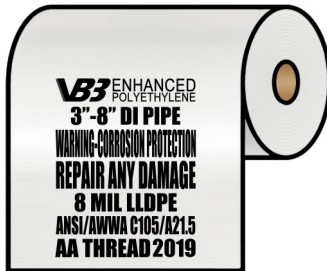
Polywrap C, much like C105 Polywrap is used to protect pipe from exterior corrosion and damage. The flexible polyethylene sleeve is great for small diameter pipes to be direct buried or encased in concrete. Contact us for more information.



VB3 Enhanced Polyethylene

Polyethylene Encasement (Polywrap) has long been studied and proven to be the most effective and economical way to provide exterior corrosion protection to ductile iron pipe, valves, and fittings. Corrosion protection methods have evolved over the years and recently Enhanced Polyethylene Encasements have been introduced to further combat corrosion concerns involving micro-organisms. Enhanced polyethylene gives you the same great protection now with added “enhanced” features such as:

- Multi-layer co extruded LLDPE
- Anti-microbial biocide
- Volatile Corrosion Inhibitor (VCI)
- Greater Protection Over Standard Wraps
- Meets ANSI/AWWA C105/A21.5



Item Number	Pipe Dia.	Tube Size	Weight/Case
70320-VB3	3" to 8"	20"x440' No Perf.	63 lbs
70327-VB3	10" to 12"	27"x220' No Perf.	43 lbs
70330-VB3	14"	30"x220' No Perf.	47 lbs
70334-VB3	16"	34"x220' No Perf.	53 lbs
70341-VB3	18" to 20"	41"x220' No Perf.	64 lbs
70354-VB3	24"	54"x220' No Perf.	84 lbs
70367-VB3	30"	67"x154' No Perf.	67 lbs
70381-VB3	30" to 42"	81"x110' No Perf.	63 lbs
70395-VB3	48"	95"x110' No Perf.	74 lbs
703108-VB3	54" to 60"	108"x110' No Perf.	84 lbs

Item Number	Pipe Dia.	Tube Size	Weight/Case
70320-22VB3	3" to 8"	20"x440'/22' Perf.	63 lbs
70327-22VB3	10" to 12"	27"x220'/22' Perf.	43 lbs
70330-22VB3	14"	30"x220'/22' Perf.	47 lbs
70334-22VB3	16"	34"x220'/22' Perf.	53 lbs
70341-22VB3	18" to 20"	41"x220'/22' Perf.	64 lbs
70354-22VB3	24"	54"x220'/22' Perf.	84 lbs
70367-22VB3	30"	67"x154'/22' Perf.	67 lbs
70381-22VB3	30" to 42"	81"x110'/22' Perf.	63 lbs
70395-22VB3	48"	95"x110'/22' Perf.	74 lbs
703108-22VB3	54" to 60"	108"x110'/22' Perf.	84 lbs

Other Polywrap Tapes & Supplies



Restrained Joint Tape

Item Number	Size	Description	Quantity/Case	Weight/Case
70911	2"x55 YD	White Marking Tape	36 Rolls	13 lbs



Polywrap Securing Products

See Page 18 for our full line of
10 MIL PVC Tapes.

Polywrap Tape

Item Number	Size	Description	Quantity/Case	Weight/Case
60811	2"x100'	6.5 MIL Vinyl Polywrap Tape	36 Rolls	24 lbs
60210	1.5"x100'	10 MIL PVC Tape	48 Rolls	41 lbs
60211	2"x100'	10 MIL PVC Tape	36 Rolls	39 lbs



Large Cable Ties (For Securing Wrap)

Item Number	Size	Description	Quantity/Case	Weight/Case
66048	0.34"x48"	Black Cable Ties	500 Ties	27 lbs

Detectable Underground Marking Tapes



5 MIL Detectable Tapes

Size	Weight/Case	Rolls/Case
2"x1000'	53 lbs	12 Rolls
3"x1000'	53 lbs	8 Rolls
6"x1000'	53 lbs	4 Rolls

Non-Detectable Underground Marking Tapes



4 MIL Underground Marking Tapes

Size	Weight/Case	Rolls/Case
3"x1000'	43 lbs	8 Rolls
6"x1000'	43 lbs	4 Rolls

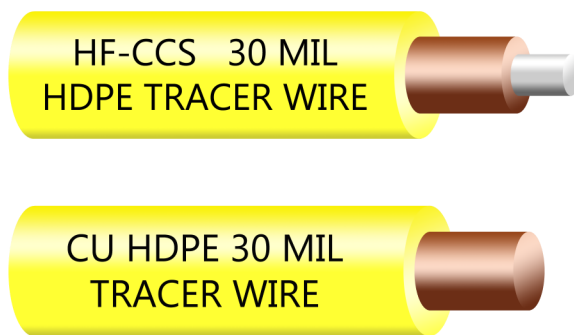
Barricade Tapes



Barricade Tapes

Size	Weight/Case	Rolls/Case
3"x1000'	32 lbs	12 Rolls

Tracer Wire



Wire Info	Description
Wire Type	Solid, Stranded or Copper Clad Steel
Wire Thickness	Typically Between 8-16 AWG
Jacket Color	Yellow, Blue, Green, & More...
Jacket Thickness	30 MIL or 45 MIL
Spool Length	500' - 2,500' - 5,000'
Other Info	Ex: High Flex, Directional Drill
Quantity	In Spools or Feet

Contact us with as much of the above information as you have for a tracer wire quote

PVC Pipe Wrapping Tapes

This tape consists of stabilized, plasticized PVC (poly vinyl chloride) film coated with a noncorrosive pressure sensitive adhesive. It is excellent in moisture resistance and anti-corrosion applications. Also, it has outstanding conformability and adhesion to metal and plastics



Black PVC Pipe Wrapping Tape

Item Number	Size	Thickness	Quantity/Case	Weight/Case
60210	1 1/2"x100'	10 MIL	48 Rolls	41 lbs
60211	2"x100'	10 MIL	36 Rolls	39 lbs
60221	4"x100'	10 MIL	18 Rolls	39 lbs
60241	6"x100'	10 MIL	8 Rolls	26 lbs
60231	2"x100'	20 MIL	18 Rolls	42 lbs
60251	6"x100'	20 MIL	12 Rolls	81 lbs

UPC Printed PVC Pipe Wrapping Tape

Item Number	Size	Thickness	Quantity/Case	Weight/Case
60310	1"x100'	10 MIL	72 Rolls	41 lbs
60311	2"x100'	10 MIL	36 Rolls	40 lbs
60321	4"x100'	10 MIL	18 Rolls	41 lbs
60331	2"x100'	20 MIL	18 Rolls	41 lbs
60341	4"x100'	20 MIL	12 Rolls	55 lbs

Yellow & Green PVC Pipe Wrapping Tape

Item Number	Size	Thickness	Quantity/Case	Weight/Case
60411	2"x100' Yellow	10 MIL	36 Rolls	41 lbs
60412	4"x100' Yellow	10 MIL	18 Rolls	42 lbs
60511	2"x100' Green	10 MIL	36 Rolls	41 lbs
60521	4"x100' Green	10 MIL	18 Rolls	42 lbs

PVC Electrical Tapes

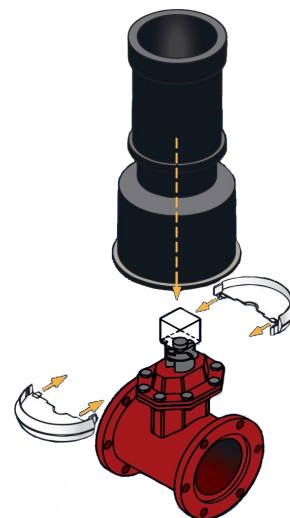
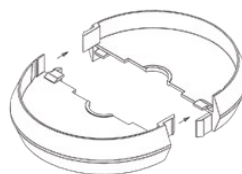
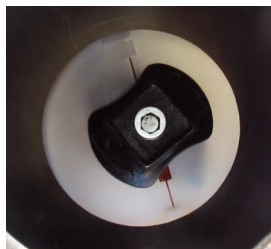
We carry a wide variety of colored electrical tape to meet your needs. Each roll is individually wrapped in cellophane to keep dirt away during transport and storage. These are also packaged in 10 roll sleeves. Our PVC Electrical Tape is suitable for use at no more than 600V, and not more than 176 degree Fahrenheit. UL listed.



Electrical Tape (Low Lead)

Thickness: 7 MIL

Item Number	Size	Color	Quantity/Case	Weight/Case
60011	3/4"x60'	Black	360 Rolls	63 lbs
60012	3/4"x60'	Black	200 Rolls	33 lbs
60031	3/4"x60'	Red	200 Rolls	33 lbs
60041	3/4"x60'	Blue	200 Rolls	33 lbs
60051	3/4"x60'	Green	200 Rolls	33 lbs
60061	3/4"x60'	White	200 Rolls	33 lbs
60071	3/4"x60'	Orange	200 Rolls	33 lbs
60081	3/4"x60'	Brown	200 Rolls	33 lbs
60091	3/4"x60'	Gray	200 Rolls	33 lbs
60101	3/4"x60'	Yellow	200 Rolls	33 lbs



6" PVC PIPE (O.D. OF BOXLOK = 5.5")

MANUFACTURER	VALVE SIZE							
	2"	3"	4"	6"	8"	10"	12"	12+"
AVK	3	3	3	3	3	3	3	3
AFC	4	4	4	4	4	3	3	3
J&S Valve	4	4	4	4	4	3	3	3
East Jordan	4	4	4	4	4	4	3	3
Mueller	4	4	4	4	4	3	3	3
US Pipe	4	4	4	4	4	4	3	3
Clow	4	4	4	4	4	**	**	**
Kennedy	4	4	4	4	4	**	**	**
M&H	4	4	4	4	4	**	**	**

CAST IRON VALVE BOX /8" PVC (O.D. OF BOXLOK = 7.5")

MANUFACTURER	VALVE SIZE							
	2"	3"	4"	6"	8"	10"	12"	12+"
AVK	1	1	1	1	1	1	1	**
AFC	2	2	2	2	2	1	1	**
J&S Valve	2	2	2	2	2	1	1	**
East Jordan	2	2	2	2	2	2	1	**
Mueller	2	2	2	2	2	1	1	**
US Pipe	2	2	2	2	2	2	1	**
Clow	2	2	2	2	2	K1	K1	K1
Kennedy	2	2	2	2	2	K1	K1	K1
M&H	2	2	2	2	2	K1	K1	K1

More and more water systems are realizing the advantages of a Valve Box Alignment Device (VBAD). During installation, a VBAD will align the Valve Box to the Valve without the extra labor required to keep the valve box in position. The design of the Box Lok creates a concentric position between the operating nut and the inside wall of the Valve box. This prevents movement of the Valve Box. This movement will make operating the Valve more and more difficult over time and the Valve Box will have to be reset. A Box Lok will also keep dirt from settling around an operating nut. This dirt will wear seals and lessen the life of a Valve.

- Snaps around the valve stem—under the opening nut, above the seal plate
- Works with nearly all buried valves with valve box access
- For use with cast Iron boxes, 6" PVC risers and 8" PVC
- Made in the USA

Box Lok

Item Number	Size	Quantity/Case	Weight/Case
BL1	1	25 units	12 lbs
BL2	2	25 units	12 lbs
BL3	3	25 units	8 lbs
BL4	4	25 units	8 lbs
BLK1	K1	25 units	12 lbs
BLK3	K3	25 Units	8 lbs

Packaging & Industrial Tapes, Stretch Film and Supplies

Packing & Industrial Tapes



Item Number	Size	Description	Thickness	Quantity/Case	Weight/Case
70023	2"x110 Yard	Carton Sealing Clear Tape	1.8 MIL	36 Rolls	22 lbs
70024	2"x110 Yard	Carton Sealing Tan Tape	1.8 MIL	36 Rolls	22 lbs
70060	2"x60 Yard	Duct Tape	7 MIL	24 Rolls	30 lbs
70061	2"x60 Yard	Duct Tape	9 MIL	24 Rolls	36 lbs



Packing & Industrial Tapes



Item Number	Size	Description	Quantity/Case	Weight/Case
70028	3/4"x60 Yard	Fiberglass Strapping Tape	48 Rolls	12 lbs
70029	1"x60 Yard	Fiberglass Strapping Tape	36 Rolls	13 lbs
70049	2"x55 Yard	Heavy Duty Clear Seal Tape	36 Rolls	14 lbs
70050	2"x110 Yard	PVC Clear Seal Tape	36 Rolls	28 lbs

Stretch Films



Item Number	Description	Size	Quantity/Case	Weight/Case
70040	Standard	80g 18"x1500'	4 Rolls	40 lbs
70140	Standard	90g 18"x1500'	4 Rolls	45 lbs
70138	Machine Grade	75g 20"x5000'	1 Roll	33 lbs
70100	Extended Core Handle	20"x1000'	4 Rolls	26 lbs

Other Items



Item Number	Description	Size	Quantity/Box	Weight/Box
70043	Heavy Duty Tape Dispenser	2"wide	1	2 lbs
70041	Packing List Envelopes	4.5"x5.5"	1000 Envelopes	7 lbs



Notes:

[illegible]

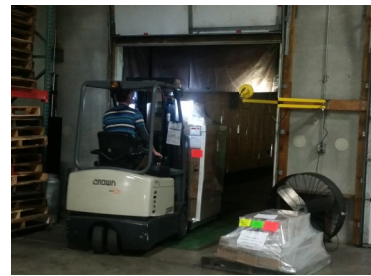
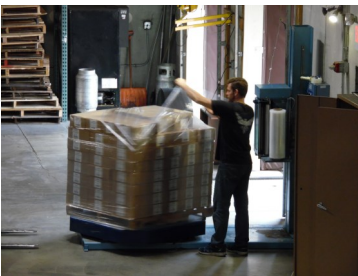


About AA Thread Seal Tape, Inc.



About AA Thread

AA Thread has been in business since 1979 supplying wholesalers and distributors in the waterworks and plumbing industries with quality products and superior service. Our products include Polyethylene Encasements for Ductile Iron Pipe, Pipe Wrapping Tape, Detectable/Non-Detectable Underground Marking Tapes, Barricade Tapes, Tracer Wire, PTFE Thread Seal Tapes/Sealants, Industrial Tapes, Supplies and More. Over the years we have grown to be one of the largest distributors of these materials in North America. We ensure that all of our products meet and/or exceed all regulatory specifications and standards. We keep a vast inventory of products in our warehouse located near Chicago, IL. We offer fast shipping on in stock items. We typically ship orders the same day, or next day, that they are received. Our consistent product quality combined with our knowledgeable customer service make us the perfect fit for all your pipe wrapping, plumbing and other industrial needs.



Rapid Ship Program

We keep a vast inventory of our products in stock. This gives us the opportunity to offer our Rapid Ship Program. Orders received before 10 A.M. (CST) will ship that same day.

This applies to regular stocked items in our catalog. Special Order items are subject to lead times. AA Thread is not responsible for any delayed delivery times by carrier.

AA THREAD SEAL TAPE, INC.

MAIN OFFICE AND WAREHOUSE
1275 KYLE COURT
WAUCONDA, IL 60084

WESTERN WAREHOUSE
4000 EAST, US-6
SPANISH FORK, UT 84660

WWW.AATHREAD.COM | SALES@AATHREAD.COM | (800) 537-7139



WE ARE PROUD MEMBERS OF:

