



2018

PRODUCT CATALOG



POLYWRAP
PIPE WRAP TAPES
MARKING TAPES
DETECTABLE TAPES
TRACER WIRE
THREAD SEAL TAPES
ELECTRICAL TAPES
INDUSTRIAL TAPES
SUPPLIES & MORE



Table of Contents

Section 1—Thread Seal Tapes & Sealants	Page
PTFE Thread Seal Tape—Made in USA	6-8
PTFE Thread Seal Tape—Made in China	9-11
PTFE Thread Seal Tape—Made in Italy	12
Expanded PTFE Universal Joint Sealant (Uniseal)	13
Valve Stem Packing products	13
Section 2—Polyethylene Encasements (Polywrap)	Page
All (8MIL & 12MIL) Linear Low Density Polywrap	14-17
4MIL Cross Laminated High Density	18-19
10MIL Cross Laminated High Density Joint Wrap	20
VB3 Enhanced Polyethylene	21
Section 3—Polywrap Accessories	Page
Tapes and Supplies	22
Section 4—Marking & Barricade Tapes	Page
Detectable Underground Marking Tape	23
Non-detectable Underground Marking Tape	24
Barricade Tape	25
Section 5—Tracer Wire & Accessories	Page
Tracer Wire	26
Connectors and Accessories	27
Section 6—PVC Tapes	Page
PVC Pipe Wrapping Tapes	28
PVC Electrical Tapes	29
Section 7—Industrial Tapes & Supplies	Page
Packaging & Industrial Tapes	30
Stretch Film & Supplies	31

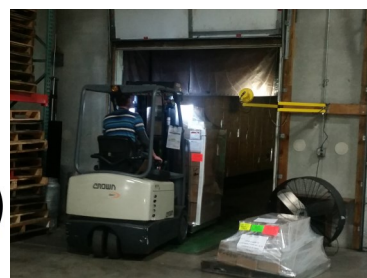
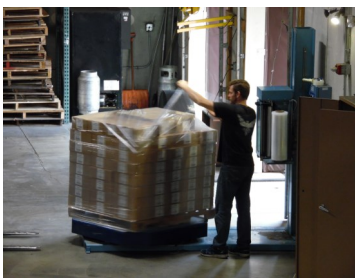


About AA Thread Seal Tape, Inc.



About AA Thread

AA Thread has been in business since 1979 supplying wholesalers and distributors in the waterworks and plumbing industries with quality products and superior service. Our products include Polyethylene Encasements for Ductile Iron Pipe, Pipe Wrapping Tape, Detectable/Non-Detectable Underground Marking Tapes, Barricade Tapes, Tracer Wire, PTFE Thread Seal Tapes/Sealants, Industrial Tapes, Supplies and More. Over the years we have grown to be one of the largest distributors of these materials in North America. We ensure that all of products meet and or exceed all regulatory specifications and standards. We keep a vast inventory of products in our warehouse located near Chicago, IL. We offer fast shipping on in stock items. We typically ship orders the same or next day, that they are received. Our consistent product quality combined with our knowledgeable customer service make us the perfect fit for all your pipe wrapping, plumbing and other industrial needs.



Rapid Ship Program

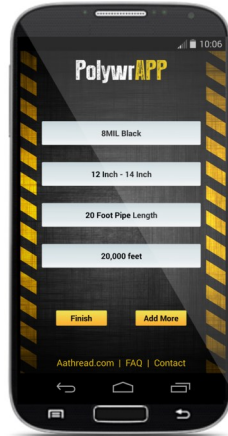
We keep a vast inventory of our products in stock. This gives us the opportunity to offer our Rapid Ship Program. Orders received before 10 A.M. (CST) will ship that same day.

This applies to regular stocked items in our catalog. Special Order items are subject to lead times. AA Thread is not responsible for any delayed delivery times by carrier.



New Product Showcase

Our new calculator and quoting tool will make determining the amount of wrap needed for the job a whole lot easier for you or your customers. By answering a few easy questions and entering in the linear feet of pipe needed to protect, the PolywrAPP calculator will figure out the proper amount of Polyethylene Encasements needed for the job. This properly calculates the overlaps at each pipe section as well as how many rolls of tape should be used to secure the wrap. Aside from telling you how much product is needed, it also tells you how many pallets are need for shipping and an estimated shipping weight of the potential order. If you need a quote, you can simply click the RFQ button and someone will contact you shortly with a quote and any other details you requested.



PolywrAPP is available for free download on the Apple and Android networks as well as online at:

www.aathread.com/polywrapp

VB3 ENHANCED POLYETHYLENE

Polyethylene Encasement (Polywrap) has long been studied and proven to be the most effective and economical way to provide exterior corrosion protection to ductile iron pipe, valves, and fittings. Corrosion protection methods have evolved over the years and recent enhanced polyethylene have been introduced to further combat corrosion concerns involving micro-organisms. Enhanced polyethylene gives you the same great protection with enhanced features:

- Multi-layer co extruded LLDPE
- Anti-microbial biocide
- Volatile Corrosion Inhibitor (VCI)
- Greater Protection Over Standard Wraps
- Meets ANSI/AWWA C105/A21.5

More info on page 21



New to our line up is Tracer Wire and the proper accessories needed. Our new wide range of wire should be all you need to complete the job. Our copper clad steel wire is a nice upgrade to the standard tracer wire. This wire replaces some of the expensive copper with steel. Not only is it more cost effective but it is also much stronger! Pricing this and normal tracer wire does fluctuate so call for quotes.

See page 26-27 for more info



New this year we now sell a wide range of detectable and non detectable underground marking tapes as well as barricade tapes. These items are manufactured locally so items not in stock only have a couple day lead time. Custom orders also welcome. Contact us for more info.

More info on pages 23-25.



Thread Seal Tapes & Sealants

Section 1



White PTFE Thread Seal Tape

For all industrial applications. Made from 100% virgin PTFE. No pigments, or additives. May be used on all applications including water, oil, chemical, medical, and food processing where non-contamination standards are high. Exceeds the MIL Spec T-27730A standards. Temperature range of -450 to +550 degrees Fahrenheit. Offered and available in a variety of sizes and densities.

Yellow Gas Line PTFE Thread Seal Tape

Designed for gas lines of all types including natural gas, propane, and butane lines. Meets gas company standards world wide. Seals threads easily and quickly with confidence. Exceeds the MIL Spec T-27730A standards. Temperature range of -450 to +550 degrees Fahrenheit. Offered and available in a variety of sizes and densities.

Pink Plumbers PTFE Thread Seal Tape

For plumbers and pipe fitters. Color-coded pink to signify that it is heavier than standard white thread seal tapes. Ensures leak free joints. Exceeds the MIL Spec T-27730A standards. Temperature range of -450 to +550 degrees Fahrenheit. Offered and available in a variety of sizes and densities.

Gray Stainless Steel PTFE Thread Seal Tape

This tape has nickel pigment color added for use on all stainless steel fittings. Prevents galling, seizing, and corrosion. This is the only tape for coarse stainless steel threads. Exceeds the MIL Spec T-27730A standards. Temperature range of -450 to +550 degrees Fahrenheit. Offered and available in a variety of sizes and densities.

Green Oxygen PTFE Thread Seal Tape

Color coded green for oxygen applications. This grease free tape is great for all oxygen line applications. Exceeds the MIL Spec T-27730A standards. Temperature range of -450 to +550 degrees Fahrenheit. Offered and available in a variety of sizes and densities.



Thread Seal Tapes & Sealants

Section 1

PTFE Thread Seal Tapes—Made in USA



Standard Thread Seal Tape

Density: 0.7 Thickness: 3.5 MIL

Meets MIL Spec T-27730A

Item Number	Size	Quantity/Case	Weight/Case	Price
10031	1/2"x260"	144	6 lbs	
10051	1/2"x520"	144	8 lbs	
10061	1/2"x600"	144	8 lbs	
10071	1/2"x1296"	144	15 lbs	
10081	3/4"x260"	144	9 lbs	
10101	3/4"x520"	144	11 lbs	
10121	3/4"x1296"	144	21 lbs	
10141	1"x260"	144	7 lbs	
10161	1"x520"	144	13 lbs	
10181	1"x1296"	144	23 lbs	



Premium High Density Thread Seal Tape

Density: 1.2 Thickness: 4 MIL

Meets MIL Spec T-27730A & CID A-A 58092

Item Number	Size	Quantity/Case	Weight/Case	Price
10311	1/4"x260"	144	5 lbs	
10321	1/4"x520"	144	7 lbs	
10331	1/2"x260"	144	7 lbs	
10351	1/2"x520"	144	10 lbs	
10371	1/2"x1296"	144	20 lbs	
11381	3/4"x260"	144	10 lbs	
10381	3/4"x520"	144	14 lbs	
10391	1"x520"	144	14 lbs	



Thread Seal Tapes & Sealants

Section 1

Color Coded PTFE Thread Seal Tapes—Made in USA



Yellow High Density Gas Line Thread Seal Tape

Density: 0.9 Thickness: 4 MIL

Meets MIL Spec T-27730A

Item Number	Size	Quantity/Case	Weight/Case	Price
10731	1/2"x260"	144	8 lbs	
10751	1/2"x520"	144	9 lbs	
10761	3/4"x260"	144	10 lbs	
10771	3/4"x520"	144	16 lbs	
10781	1"x260"	144	10 lbs	
10791	1"x520"	144	16 lbs	



Yellow Full Density Gas Line Thread Seal Tape

Density: 1.6 Thickness: 4 MIL

Meets MIL Spec T-27730A & CID A-A 58092

Item Number	Size	Quantity/Case	Weight/Case	Price
13031	1/2"x260"	144	9 lbs	
13051	1/2"x520"	144	12 lbs	
13081	3/4"x260"	144	13 lbs	
13101	3/4"x520"	144	19 lbs	



Thread Seal Tapes & Sealants

Section 1

Color Coded PTFE Thread Seal Tapes—Made in USA



Gray Stainless Steel Thread Seal Tape

Density: 1.2 Thickness: 4 MIL

Meets MIL Spec T-27730A & CID A-A 58092

Item Number	Size	Quantity/Case	Weight/Case	Price
14031	1/2"x260"	144	7 lbs	
14051	1/2"x520"	144	10 lbs	
14081	3/4"x260"	144	11 lbs	
14101	3/4"x520	144	14 lbs	
14141	1"x260"	144	12 lbs	
14161	1"x520"	144	14 lbs	



Pink Plumbers Thread Seal Tape

Density: 1.2 Thickness: 4 MIL

Meets MIL Spec T-27730A & CID A-A 58092

Item Number	Size	Quantity/Case	Weight/Case	Price
15031	1/2"x260"	144	7 lbs	
15051	1/2"x520"	144	11 lbs	
15081	3/4"x260"	144	10 lbs	
15141	1"x260	144	12 lbs	

Green Oxygen Thread Seal Tape

Density: 1.2 Thickness: 4 MIL

Meets MIL Spec T-27730A & CID A-A 58092

Item Number	Size	Quantity/Case	Weight/Case	Price
16031	1/2"x260"	144	7 lbs	
16051	1/2"x520"	144	11 lbs	
16101	3/4"x520"	144	14 lbs	





Thread Seal Tapes & Sealants

Section 1

PTFE Thread Seal Tapes—Made in China



Standard Thread Seal Tape
Density: 0.4 Thickness: 3.5 MIL
Meets MIL Spec T-27730A

Item Number	Size	Quantity/Case	Weight/Case	Price
40211C	1/2"x60"	1500	16 lbs	
40021C	1/2"x100"	500	16 lbs	
40031C	1/2"x260"	500	16 lbs	
40051C	1/2"x520"	500	18 lbs	
40071C	1/2"x1296"	250	22 lbs	
40081C	3/4"x260"	350	14 lbs	
40101C	3/4"x520"	350	19 lbs	
40121C	3/4"x1296"	150	16 lbs	
40141C	1"x260"	250	16 lbs	
40161C	1"x520"	250	17 lbs	
40181C	1"x1296"	150	16 lbs	
42151C	1 1/2"x520"	150	14 lbs	
42161C	2"x520"	150	16 lbs	



High Density Thread Seal Tape
Density: 0.8 Thickness: 4 MIL
Meets MIL Spec T-27730A

Item Number	Size	Quantity/Case	Weight/Case	Price
40011C	1/4"x520"	500	14 lbs	
40251C	1/2"x520"	500	24 lbs	
40261C	3/4"x520"	350	24 lbs	



Thread Seal Tapes & Sealants

Section 1

Color Coded PTFE Thread Seal Tapes—Made in China



Yellow Gas Line Thread Seal Tape

Density: 0.9 Thickness: 4 MIL

Meets MIL Spec T-27730A

Item Number	Size	Quantity/Case	Weight/Case	Price
43031C	1/2"x260"	500	21 lbs	
43051C	1/2"x520"	500	28 lbs	
43101C	3/4"x520"	350	28 lbs	



Green Oxygen Thread Seal Tape

Density: 1.2 Thickness: 3.5 MIL

Meets MIL Spec T-27730A & CID A-A 58092

Item Number	Size	Quantity/Case	Weight/Case	Price
46031C	1/2"x260"	500	24 lbs	
46051C	1/2"x520"	500	38 lbs	
46101C	3/4"x520"	350	34 lbs	



Pink Plumbers Thread Seal Tape

Density: 0.9 Thickness: 4 MIL

Meets MIL Spec T-27730A

Item Number	Size	Quantity/Case	Weight/Case	Price
45031C	1/2"x260"	500	21 lbs	



Thread Seal Tapes & Sealants

Section 1

Professional Grade PTFE Thread Seal Tapes—Made in China



BLUE SEAL!

Our new line of BLUE SEAL PTFE Thread Seal Tape is now available on the market. This rugged multi-purpose tape comes on a 1,368 inch long super roll**, and is twice the density of standard thread seal tapes. This product is great for stubborn, hard to seal threads. It also requires less passes over the threads to get a good seal, making our new super roll last the user up to three times longer! BLUE SEAL PTFE Thread Seal Tape is made of virgin PTFE and exceeds the MIL Spec T-27730A standards. BLUE SEAL PTFE Thread Seal Tape has a temperature range of -450 degrees to +450 degrees (Fahrenheit). It is available in 1/2" 3/4" and 1" wide spools for your convenience.



Blue Seal Thread Seal Tape

Density: 0.8 Thickness: 3.5 MIL

Meets MIL Spec T-27730A

Item Number	Size	Quantity/Case	Weight/Case	Price
40291C	1/2"x1368"	250	32 lbs	
40292C	3/4"x1368"	150	27 lbs	
40293C	1"x1296"	150	29 lbs	



Thread Seal Tapes & Sealants

Section 1

PTFE Thread Seal Tapes—Made in Italy



Standard Thread Seal Tape

Density: 0.35 **Thickness:** 3.5 MIL

Meets MIL Spec T-27730A

Item Number	Size	Quantity/Case	Weight/Case	Price
50011I	1/4"x520"	500	15 lbs	
50211I	1/2"x60"	1500	11 lbs	
50021I	1/2"x100"	500	11 lbs	
50031I	1/2"x260"	500	13 lbs	
50041I	1/2"x310"	500	14 lbs	
50051I	1/2"x520"	500	16 lbs	
50061I	1/2"x610"	500	18 lbs	
50071I	1/2"x1296"	185	15 lbs	
50081I	3/4"x260"	350	13 lbs	
50101I	3/4"x520"	350	16 lbs	
50121I	3/4"x1296"	150	16 lbs	
50141I	1"x260"	250	13 lbs	
50161I	1"x520"	250	17 lbs	
50181I	1"x1296"	140	15 lbs	

Yellow Gas Line Thread Seal Tape

Density: 1.1 **Thickness:** 3.5 MIL

Meets MIL Spec T-27730A

Item Number	Size	Quantity/Case	Weight/Case	Price
53031I	1/2"x260"	500	22 lbs	
53081I	3/4"x260"	350	21 lbs	
53141I	1"x260"	250	19 lbs	



Thread Seal Tapes & Sealants

Section 1

Expanded PTFE Universal Joint Sealant—Uniseal 891

Uniseal is a joint sealant manufactured from 100% expanded PTFE and combined with a self adhesive strip for easy installation. Thanks to its unique properties, it can be compressed into a thin wide ribbon which conforms to all surface irregularities. This allows it to leave a strong, inert, tough, and universal sealant which resists high temperatures, pressures and corrosive environments. Uniseal is suitable for all industries including: food and drink, pharmaceutical, water and gas supply, petroleum, chemical, building, agricultural, automotive, marine and power.



Item Number	Size	Thickness	Price
70070	1/8" x 100'	0.085"	
70071	3/16" x 75'	0.12"	
70072	1/4" x 50'	0.13"	
70073	3/8" x 25'	0.14"	
70074	1/2" x 15'	0.20"	
70074-30	1/2" x 30'	0.20"	
70074-150	1/2" x 150'	0.20"	
70075	5/8" x 15'	0.29"	
70076	3/4" x 15'	0.31"	
70077	1" x 15'	0.34"	

PTFE and Graphite Valve Stem Packing

Valve stem packing is a self forming packing material. It forms to all surfaces and irregularities such as scratches and pits. It is made from 100% virgin PTFE and has a high tensile strength. The products are self lubricating and eliminates valve stem wear. It contains no contaminants and is unaffected by most common chemicals. The temperatures ranges is -450 to +550 degrees Fahrenheit. It is easy to stock due to its unlimited shelf life. For use on valves, faucet stems, rotating shafts, reciprocating plungers, flanges, and for stuffing boxes. We offer PTFE and Graphite valve stem packing. The graphite product has graphite mixed in with the PTFE giving it an additional lubricant.

PTFE Valve Stem Packing

Item Number	Size	Price
90008	3/32" x 8"	
90021	3/32" x 21"	
90024	3/32" x 24"	



Graphite Valve Stem Packing

Item Number	Size	Price
90001	3/32" x 24"	





Polyethylene Encasements

Section 2

Linear Low Density Polyethylene Encasements (Polywrap) For Ductile Iron Pipe

Our Polywrap is made of 100% virgin polyethylene plus 3% carbon black for coloring and ultraviolet protection. It is gauged to 8.5 MIL (0.0085”) to maintain the minimum of 8 MIL as required by the AWWA standards. The material is available in perforated lengths of 20’ and 22’ for easy tear off and no waste at roll ends while on the job site.

As with all protection methods, proper installation is vital to the success of the Polywrap. Care needs to be used when installing this item so it is not damaged. If part of the wrap is damaged repair it with tape if possible. Any additional questions about this product or how to install it contact our staff and we will be happy to assist you in any way possible.



Physical Properties of Finished Film

TEST	AWWA C105/A21.5 Min Req.	AA Thread’s Film*
Tensile Strength	3,600 psi (ASTM D882)	MD 4,595 psi
	MD & TD	TD 4,410 psi
Elongation	700% min. (ASTM D882)	MD 1,073%
	MD & TD	TD 1,126%
Dielectric Strength	800 V/MIL (ASTM D149)	1,946 V/MIL
Impact resistance	600 grams (ASTM D1709)	1,189 grams
Propagation Tear	2,550 grams of force (ASTM D1922)	MD 4,462 gf
Resistance	MD & TD	TD 5,539 gf
Thickness	8 MIL (0.008”)	8.5 MIL (0.0085”)

*Tests are averages performed from an independent lab result on our 8MIL Linear Low Density Polywrap



Polyethylene Encasements

Section 2

Linear Low Density Polyethylene Encasements (Polywrap) For Ductile Iron Pipe



8 MIL Black Polywrap Pipe Sleeves

Conforms to: ANSI/AWWA C105/A21.5

Item Number	Pipe Dia.	Tube Size	Weight/Case	Cost/Ft.	Roll Cost
70001	Up to 8"	20"x400'/20' Perf.	57 lbs		
70002	Up to 8"	20"x440'/22' Perf.	63 lbs		
70002-220	Up to 8"	20"x220'/22' Perf.	32 lbs		
70003	10"	24"x400'/20' Perf.	68 lbs		
70004	10"	24"x440'/22' Perf.	76 lbs		
70227-22	12"	27"x440'/22' Perf.	85 lbs		
70227-22-220	12"	27"x220'/22' Perf.	43 lbs		
70005	12" to 14"	30"x200'/20' Perf.	43 lbs		
70006	12" to 14"	30"x220'/22' Perf.	47 lbs		
70234-22	16"	34"x220'/22' Perf.	53 lbs		
70007	16" to 18"	37"x200'/20' Perf.	53 lbs		
70008	16" to 18"	37"x220'/22' Perf.	58 lbs		
70241-22	20"	41"x220'/22' Perf.	64 lbs		
70009	20" to 24"	54"x200'/20' Perf.	77 lbs		
70010	20" to 24"	54"x220'/22' Perf.	84 lbs		
70011	30"	67"x140'/20' Perf.	67 lbs		
70014	30"	67"x154'/22' Perf.	74 lbs		
70015	36" to 42"	81"x110'/22' Perf.	63 lbs		
70013	48"	95"x110'/22' Perf.	75 lbs		
70018	54" to 60"	108"x110'/22' Perf.	84 lbs		



Polyethylene Encasements

Section 2

Linear Low Density Polyethylene Encasements (Polywrap) For Ductile Iron Pipe

8 MIL Blue Polywrap Pipe Sleeves

Conforms to: ANSI/AWWA C105/A21.5



Item Number	Pipe Dia.	Tube Size	Weight/Case	Cost/Ft.	Roll Cost
77020BLU	Up to 8"	20"x400' No Perf.	57 lbs		
77020-22BLU	Up to 8"	20"x440'/22' Perf.	63 lbs		
77027-22BLU	10" to 12"	27"x440'/22' Perf.	85 lbs		
77030BLU	10" to 14"	30"x200' No Perf.	43 lbs		
77030-22BLU	10" to 14"	30"x220'/22' Perf.	47 lbs		
77037BLU	16" to 18"	37"x200' No Perf.	53 lbs		
77054BLU	20" to 24"	54"x200' No Perf.	77 lbs		
77081BLU	36" to 42"	81"x110' No Perf.	63 lbs		

8 MIL Green Polywrap Pipe Sleeves

Conforms to: ANSI/AWWA C105/A21.5



Item Number	Pipe Dia.	Tube Size	Weight/Case	Cost/Ft.	Roll Cost
70001GRN	Up to 8"	20"x300' No Perf.	41 lbs		
70005GRN	10" to 14"	30"x200' No Perf.	43 lbs		
70007GRN	16" to 18"	37"x200' No Perf.	53 lbs		
70009GRN	20" to 24"	54"x200' No Perf.	77 lbs		
70015GRN	36" to 42"	81"x110' No Perf.	63 lbs		

8 MIL Purple Polywrap Pipe Sleeves

Conforms to: ANSI/AWWA C105/A21.5



Item Number	Pipe Dia.	Tube Size	Weight/Case	Cost/Ft.	Roll Cost
73001PUR	Up to 8"	20"x200' No Perf.	29 lbs		
73005PUR	10" to 14"	30"x200' No Perf.	43 lbs		
73007PUR	16" to 18"	37"x200' No Perf.	53 lbs		
73009PUR	20" to 24"	54"x200' No Perf.	77 lbs		
73015PUR	36" to 42"	81"x110' No Perf.	63 lbs		



Polyethylene Encasements

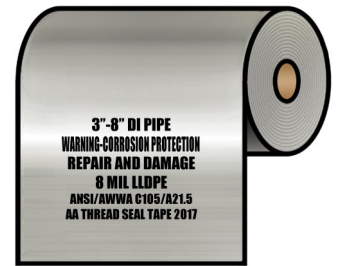
Section 2

Linear Low Density Polyethylene Encasements (Polywrap) For Ductile Iron Pipe

8 MIL Clear Polywrap Pipe Sleeves

Conforms to: ANSI/AWWA C105/A21.5

Item Number	Pipe Dia.	Tube Size	Weight/Case	Cost/Ft.	Roll Cost
72002	Up to 8"	20"x440'/22' Perf.	63 lbs		
72006	10" to 14"	30"x220'/22' Perf.	47 lbs		



12 MIL Clear Polywrap Pipe Sleeves

Conforms to: ANSI/AWWA C105/A21.5

Item Number	Pipe Dia.	Tube Size	Weight/Case	Cost/Ft.	Roll Cost
76002	Up to 8"	20"x220'/22' Perf.	47 lbs		
76006	10" to 14"	30"x220'/22' Perf.	72 lbs		
76008	16" to 18"	37"x220'/22' Perf.	87 lbs		
76010	20" to 24"	54"x110'/22' Perf.	63 lbs		
76014	30"	67"x110'/22' Perf.	78 lbs		



12 MIL Blue Polywrap Pipe Sleeves

Conforms to: ANSI/AWWA C105/A21.5

Item Number	Pipe Dia.	Tube Size	Weight/Case	Cost/Ft.	Roll Cost
76002-BLUE	Up to 8"	20"x220'/22' Perf.	47 lbs		
76006-BLUE	10" to 14"	30"x220'/22' Perf.	72 lbs		
76008-BLUE	16" to 18"	37"x220'/22' Perf.	87 lbs		
76010-BLUE	20" to 24"	54"x110'/22' Perf.	63 lbs		
76015-BLUE	36" to 42"	81"x110'/22' Perf.	95 lbs		





Polyethylene Encasements

Section 2

Cross Laminated High Density Polyethylene Encasements (Polywrap) For Ductile Iron Pipe

This film is extruded from virgin high density polyethylene resins, molecularly oriented through a stretching process. The two single ply layers are laminated bi-directionally. The grain orientation of each layer are run at a 90 degree angle to each other, which produces a high strength material. It is then finished through a heated ribbing process, which produces a very strong and durable finished product. Our material surpasses all of the specifications of the ANSI/AWWA C105/A21.5 standards and has exceptional resistance to punctures and tears that may occur during the installation process.



Physical Properties of Finished Film

TEST	AWWA C105/A21.5 Min Req.	AA Thread's Film*
Tensile Strength	6,300 psi (ASTM D882)	MD 7,593 psi
	MD & TD	TD 8,986 psi
Elongation	100% min. (ASTM D882)	MD 615.3%
	MD & TD	TD 388.7%
Dielectric Strength	800 V/MIL (ASTM D149)	1,306 V/MIL
Impact resistance	800 grams (ASTM D1709)	868 grams
Propagation Tear	250 grams of force (ASTM D1922)	MD 771 gf
Resistance	MD & TD	TD 972 gf
Thickness	4 MIL (0.004")	4 MIL (0.004")

*Tests are averages performed from an independent lab result on our 4MIL Cross Laminated High Density Polywrap



Polyethylene Encasements

Section 2

Cross Laminated High Density Polyethylene Encasements (Polywrap) For Ductile Iron Pipe

4 MIL Black X-Lam Polywrap Pipe Sleeves

Conforms to: ANSI/AWWA C105/A21.5

Item Number	Pipe Dia.	Tube Size	Weight/Case	Cost/Ft.	Roll Cost
75002	Up to 8"	20"x440' No Perf.	38 lbs		
75005	10" to 14"	30"x220' No Perf.	28 lbs		
75008	16" to 20"	41"x200' No Perf.	35 lbs		
75010	20" to 24"	54"x200' No Perf.	46 lbs		
75011	30"	67"x200' No Perf.	57 lbs		
75012	36" to 42"	81"x100' No Perf.	35 lbs		
75013	48"	95"x100' No Perf.	48 lbs		
75014	54" to 60"	108"x100' No Perf.	54 lbs		





Polyethylene Encasements

Section 2

Cross Laminated High Density Polyethylene Joint Wrap

Our Joint Wrap is made of 10 MIL Cross Laminated High Density Polyethylene and is the strongest protection available against punctures and tears where they are most likely to happen due to sharp metal from sheared bolt-heads on mechanical joints. The material is two and a half times thicker than the 4 MIL Cross Laminated HDPE used for ductile iron pipe. It exceeds all the minimum requirements for the ANSI/AWWA C105/A21.5 standards. The material is made from 100% virgin high density Polyethylene resins that are stretched in machine and transverse directions and laminated with their grain orientation in opposite directions for strength and durability.



Physical Properties of Finished Film

TEST	AWWA C105/A21.5 Min Req.	AA Thread's Film*
Elongation	100% min. (ASTM D882)	MD 800%
	MD & TD	TD 800%
Impact resistance	800 grams (ASTM D1709)	1,000 grams
Propagation Puncture Tear	N/A	MD 15,000 grams
		TD 15,000 grams
Thickness	4 MIL (0.004")	10.5 MIL (0.0105")

*Tests are averages performed from an independent lab result on our 10MIL Cross Laminated High Density Joint Wrap

10 MIL Joint Wrap Sheets

Conforms to: ANSI/AWWA C105/A21.5

Item Number	Sheet Size	Weight/Case	Cost/Ft.	Roll Cost
75030JW	30"x100'	13 lbs		

10 MIL Joint Wrap Sleeves

Conforms to: ANSI/AWWA C105/A21.5

Item Number	Pipe Dia.	Tube Size	Weight/Case	Cost/Ft.	Roll Cost
75130JW	6" to 10"	30"x100'	26 lbs		
75141JW	12" to 16"	41"x100'	35 lbs		
75154JW	18" to 24"	54"x100'	46 lbs		



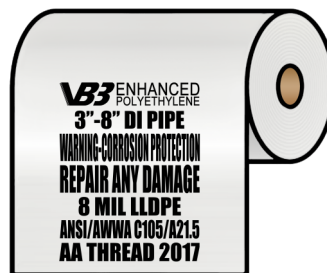
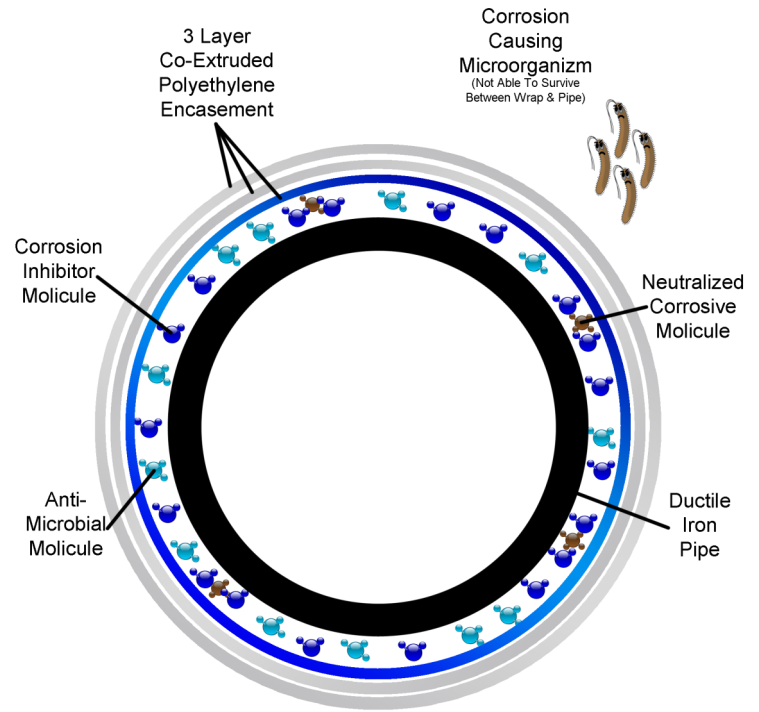
Polyethylene Encasements

Section 2

VB3 Enhanced Polyethylene

Polyethylene Encasement (Polywrap) has long been studied and proven to be the most effective and economical way to provide exterior corrosion protection to ductile iron pipe, valves, and fittings. Corrosion protection methods have evolved over the years and recent enhanced polyethylene have been introduced to further combat corrosion concerns involving micro-organisms. Enhanced polyethylene gives you the same great protection with enhanced features:

- Multi-layer co extruded LLDPE
- Anti-microbial biocide
- Volatile Corrosion Inhibitor (VCI)
- Greater Protection Over Standard Wraps
- Meets ANSI/AWWA C105/A21.5



8 MIL VB3 Enhanced Polyethylene

Conforms to: ANSI/AWWA C105/A21.5

Item Number	Pipe Dia.	Tube Size	Weight/Case	Cost/Ft.	Roll Cost
70330-VB3	Up to 14"	30"x220' No Perf.	47 lbs		
70334-VB3	16"	34"x220' No Perf.	53 lbs		
70341-VB3	18"-20"	41"x220' No Perf.	64 lbs		
70354-VB3	24"	54"x220' No Perf.	84 lbs		
70381-VB3	30"-42"	81"x110' No Perf.	63 lbs		



Polywrap Accessories

Section 3

Other Tapes & Supplies



Restrained Joint Tape

Item Number	Size	Description	Quantity/Case	Weight/Case	Roll Cost
70911	2"x55 YD	White Marking Tape	36 Rolls	13 lbs	

New Polywrap Securing Products



Polywrap Tape

Item Number	Size	Description	Quantity/Case	Weight/Case	Roll Cost
60811	2"x100'	6.5 MIL Vinyl Polywrap Tape	36 Rolls	24 lbs	



Large Cable Ties (For Securing Wrap)

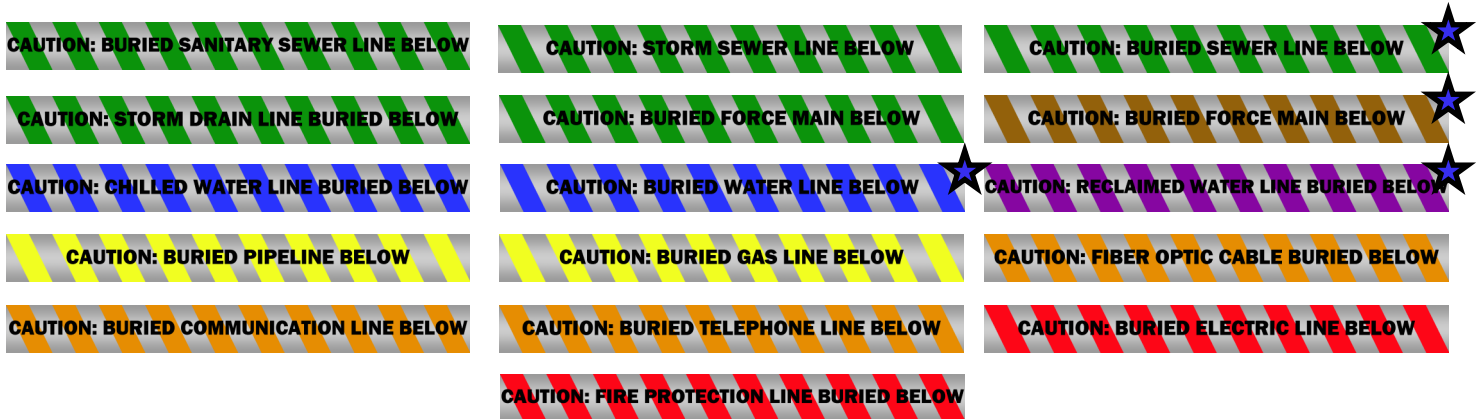
Item Number	Size	Description	Quantity/Case	Weight/Case	Case/Cost
66048	0.34"x48"	Black Cable Ties	500 Ties	27 lbs	



Marking & Barricade Tapes

Section 4

Detectable Underground Marking Tapes



Many other legends available! Contact us for more info.

Our new expanded line of Detectable Underground Marking Tape is now available for 2018. These American Made products are manufactured locally to us which allow for short lead time, custom orders, and wider range of products. While most of these are not stocked in our warehouse we do still offer a very short lead time of 1-2 days on items shown above. We do have a handful of items we stock that are available for same day shipping and can be ordered by the roll. These items are marked with a blue star and are commonly stocked in 3" and 6" sizes (Purple Reclaimed is only stocked in 3"). Be sure to check with us as we plan to expand the items we stock in our warehouse.

5 MIL Detectable Tapes

Size	Weight/Roll	Rolls/Case	Roll Cost
2"x1000'	5 lbs	12 Rolls	
3"x1000'	7.5 lbs	8 Rolls	
4"x1000'	10 lbs	6 Rolls	
6"x1000'	15 lbs	4 Rolls	
12"x1000'	30 lbs	2 Rolls	



Marking & Barricade Tapes

Section 4

Non-Detectable Underground Marking Tapes



Many other legends available! Contact us for more info.

Our new expanded line of Underground Marking Tape is now available for 2018. These American Made products are manufactured locally to us which allow for short lead time, custom orders, and wider range of products. While most of these are not stocked in our warehouse we do still offer a very short lead time of 1-2 days on items shown above. We will be stocking some of the more popular items over time which will allow for same day shipping and single roll orders. Contact us to see if the item you are looking for is stocked.

4 MIL Underground Marking Tapes

Size	Weight/Roll	Rolls/Case	Roll Cost
3"x1000'	5 lbs	8 Rolls	
4"x1000'	6.7 lbs	6 Rolls	
6"x1000'	10 lbs	4 Rolls	
12"x1000'	20 lbs	2 Rolls	



Marking & Barricade Tapes

Section 4

Barricade Tapes

CAUTION CAUTION CAUTION CAUTION	CAUTION CUIDADO	CAUTION DO NOT ENTER
CAUTION CONSTRUCTION AREA	CAUTION HARD HAT AREA	CAUTION MEN WORKING OVERHEAD
CAUTION OPEN TRENCH	CAUTION HAZARDOUS AREA	FIRE LINE DO NOT CROSS
CAUTION WET FLOOR	CAUTION WET PAINT	SECURITY LINE DO NOT CROSS
CRIME SCENE DO NOT CROSS	SHERIFFS LINE DO NOT CROSS	POLICE LINE DO NOT CROSS
DANGER DO NOT ENTER	DANGER DANGER DANGER	

Many other legends available! Contact us for more info.

Our new expanded line of Barricade Tape is now available for 2018. These American Made products are manufactured locally to us which allow for short lead time, custom orders, and wider range of products. While most of these are not stocked in our warehouse we do still offer a very short lead time of 1-2 days on items shown above. We will be stocking some of the more popular items over time which will allow for same day shipping and single roll orders. Contact us to see if the item you are looking for is stocked.

Barricade Tapes

Thickness	Size	Weight/Roll	Rolls/Case	Price
2 MIL	3"x300'	1 lbs	24 Rolls	
2 MIL	3"x1000'	2.8 lbs	12 Rolls	
3 MIL	3"x300'	1.2 lbs	18 Rolls	
3 MIL	3"x1000'	3.8 lbs	12 Rolls	
4 MIL	3"x300'	1.5 lbs	12 Rolls	
4 MIL	3"x1000'	4.8 lbs	10 lbs	



Tracer Wire & Accessories

Section 5

Tracer Wire

Below is a list of tracer wires we have available. Each different style is available in many sizes and colors. The copper core wires can come solid or stranded cores. The copper clad steel is only available in solid core. Copper clad steel is the most cost effective product as it replaces some of the very expensive copper with steel. It also is much stronger than copper core wires and comes with a long list of other benefits.

Available Colors: Yellow, Blue, Green, Orange, Purple, Red, White, Black.



PRO-TRACE

Copper Clad Steel

-45 MIL HDPE Insulation

-Direction Drilling Applications

-Rated 30 Volts

-Sized 6 AWG to 14 AWG



PRO-TRACE

Copper Clad Steel

-30 MIL HDPE Insulation

-High Flex / Open Trench

-Rated up to 30 Volts

-Sized 8 AWG to 18 AWG



PRO-TRACE

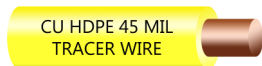
Copper Clad Steel

-45 MIL HDPE Insulation

-High Flex / Open Trench

-Rated up to 30 Volts

-Sized 8 AWG to 18 AWG



Copper PE45

-45 MIL HDPE Insulation

-Solid Or Stranded

-Rated up to 600 Volts

-Sized 8 AWG to 14 AWG



Copper UF

-60 MIL PVC Insulation

-Solid Or Stranded

-Rated up to 600 Volts

-Sized 8 AWG to 14 AWG



Copper PE30

-30 MIL HDPE Insulation

-Solid Or Stranded

-Rated up to 30 Volts

-Sized 8 AWG to 14 AWG



Copper THHN

-15 MIL PVC Insulation

-Solid Or Stranded

-Rated up to 600 Volts

-Sized 8 AWG to 14 AWG



Copper TFFN

-15 MIL PVC Insulation

-Solid Or Stranded

-Rated up to 600 Volts

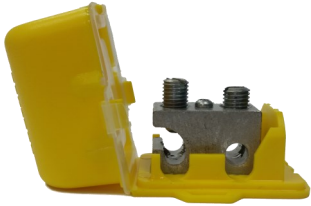
-Sized 16 AWG to 18 AWG



Tracer Wire & Accessories

Section 5

Connectors & Accessories

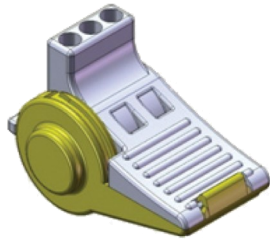


68001-Y Box style DB connector

Part Number	Wire Range	Wire Count	Max Volt	Case Count	Price Each
68001-(B or Y)	14-10 AWG	2	50v	5 Units	
68002-(B or Y)	14-10 AWG*	3	300v	50 Units	
68003	18-8 AWG	2	1000v	50 Units	

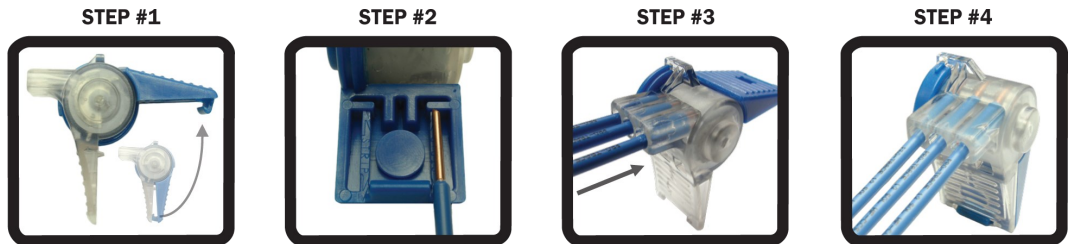
*AWG range not for all wire styles

B or Y stands for Blue or Yellow



68002-Y Pro-Trace DB connector

-Does not work with HD-CCS & HDD-CCS wire

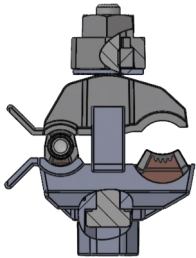


STEP #1
Open wings (handles) to 90 degrees position

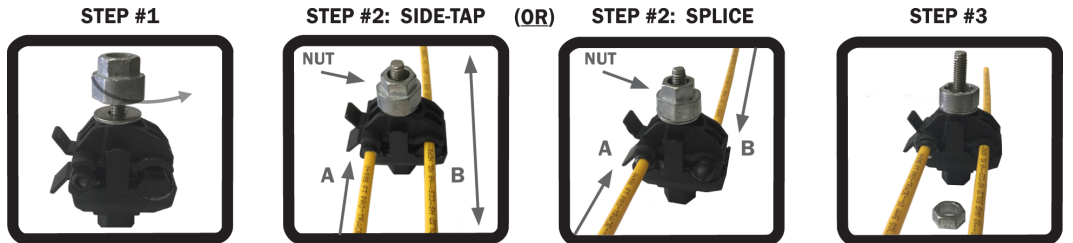
STEP #2
Strip wires to 5/8". Use the strip guide molded into the connector for reference.

STEP #3
Insert striped wires into connector. The striped ends of the wires should be visible through the clear housing on the back.

STEP #4
Hold wires in place while squeezing wings (handles) together until the latch snaps shut.



68003 Tracer-Lock DB connector with in-line tap

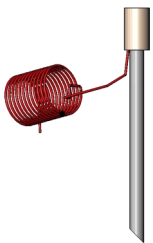


STEP #1
Loosen shear head nut counter-clock wise to open up connector.

STEP #2: SIDE-TAP (OR)
TAP for uncut main to lateral. Use side B and position connector as desired on the tracer main. Then insert lateral wire completely into side A. *Hand tighten nut clockwise to hold wires in place.*

STEP #2: SPLICE
SPLICE for reel to reel. Insert un-stripped tracer wire end completely into side A. Then insert new tracer wire end into side B. *Hand tighten nut clockwise to hold wires in place.*

STEP #3
After un-stripped wires are in place use a 1/2" (13mm) socket wrench or drill. At 70 lbs/in torque, the shear nut will break away (over torquing is fine). Install is complete and your tracer wire has been **TRACER-LOCKED™!**



Part Number	Description	Case Count	Price
68100	Magnesium Grounding Anode for Tracer Wire	1	
68210	Tracer-Pit Lite Duty Test Station	1	
68220	Tracer-Pit Lite Duty Adjustable Test Station*	1	
68230	Tracer-Pit Lite Duty XL Test Station*	1	
68240	Tracer-Pit Concrete/Driveway Test Station	1	
68250	Tracer-Pit Roadway Duty Test Station	1	

*Longer lead time may apply

Several colors available for each please ask for info





PVC Tapes

Section 6

PVC Pipe Wrapping Tapes

This tape consists of stabilized, plasticized PVC (poly vinyl chloride) film coated with a noncorrosive pressure sensitive adhesive. It is excellent in moisture resistance and anti-corrosion applications. Also it has outstanding conformability and adhesion to metal and plastics



Black PVC Pipe Wrapping Tape

Item Number	Size	Thickness	Quantity/Case	Weight/Case	Roll Cost
60210	1 1/2"x100'	10 MIL	48 Rolls	41 lbs	
60211	2"x100'	10 MIL	36 Rolls	39 lbs	
60221	4"x100'	10 MIL	18 Rolls	39 lbs	
60241	6"x100'	10 MIL	8 Rolls	26 lbs	
60231	2"x100'	20 MIL	18 Rolls	42 lbs	
60251	6"x100'	20 MIL	12 Rolls	81 lbs	

UPC Printed PVC Pipe Wrapping Tape

Item Number	Size	Thickness	Quantity/Case	Weight/Case	Roll Cost
60310	1"x100'	10 MIL	72 Rolls	41 lbs	
60311	2"x100'	10 MIL	36 Rolls	40 lbs	
60321	4"x100'	10 MIL	18 Rolls	41 lbs	
60331	2"x100'	20 MIL	18 Rolls	41 lbs	
60341	4"x100'	20 MIL	12 Rolls	55 lbs	

Yellow & Green PVC Pipe Wrapping Tape

Item Number	Size	Thickness	Quantity/Case	Weight/Case	Roll Cost
60411	2"x100' Yellow	10 MIL	36 Rolls	41 lbs	
60412	4"x100' Yellow	10 MIL	18 Rolls	42 lbs	
60511	2"x100' Green	10 MIL	36 Rolls	41 lbs	
60521	4"x100' Green	10 MIL	18 Rolls	42 lbs	



PVC Tapes

Section 6

PVC Electrical Tapes

We carry a wide variety of colored electrical tape to meet your needs. Each roll is individually wrapped in cellophane to keep dirt away during transporting and storage. These are also packaged in 10 roll sleeves. Our PVC Electrical Tape is suitable for use at no more than 600V, and not more than 176 degree Fahrenheit. UL listed.



Electrical Tape (Low Lead)

Thickness: 7 MIL

Item Number	Size	Color	Quantity/Case	Weight/Case	Roll Cost
60011	3/4"x60'	Black	360 Rolls	63 lbs	
60012	3/4"x60'	Black	200 Rolls	33 lbs	
60031	3/4"x60'	Red	200 Rolls	33 lbs	
60041	3/4"x60'	Blue	200 Rolls	33 lbs	
60051	3/4"x60'	Green	200 Rolls	33 lbs	
60061	3/4"x60'	White	200 Rolls	33 lbs	
60071	3/4"x60'	Orange	200 Rolls	33 lbs	
60081	3/4"x60'	Brown	200 Rolls	33 lbs	
60091	3/4"x60'	Gray	200 Rolls	33 lbs	
60101	3/4"x60'	Yellow	200 Rolls	33 lbs	



Packaging & Industrial Tapes

Duct Tape

Item Number	Size	Thickness	Quantity/Case	Weight/Case	Roll Cost
70060	2"x60 Yard	7 MIL	24 Rolls	30 lbs	
70061	2"x60 Yard	9 MIL	24 Rolls	36 lbs	



Fiberglass Strapping Tape

Item Number	Size	Quantity/Case	Weight/Case	Roll Cost
70028	3/4"x60 Yard	48 Rolls	12 lbs	
70029	1"x60 Yard	36 Rolls	13 lbs	

Carton Sealing Tape

Item Number	Size	Color	Quantity/Case	Weight/Case	Roll Cost
70023	2"x110 Yard	Clear	36 Rolls	22 lbs	
70024	2"x110 Yard	Tan	36 Rolls	22 lbs	

Heavy Duty Clear Seal Tape

Item Number	Size	Quantity/Case	Weight/Case	Roll Cost
70049	2"x55 Yard	36 Rolls	14 lbs	



PVC Clear Seal Tape

Item Number	Size	Quantity/Case	Weight/Case	Roll Cost
70050	2"x110 Yard	36 Rolls	28 lbs	



Stretch Film & Supplies

Standard Stretch Film

Item Number	Size	Quantity/Case	Weight/Case	Case Cost
70040	80g 18"x1500'	4 Rolls	40 lbs	
70140	90g 18"x1500'	4 Rolls	45 lbs	

Machine Grade Stretch Film

Item Number	Size	Quantity/Case	Weight/Case	Roll Cost
70138	75g 20"x5000'	1 Roll	33 lbs	

Extended Core Handle Stretch Film

Item Number	Size	Quantity/Case	Weight/Case	Case Cost
70100	20"x1000'	4 Rolls	26 lbs	



Heavy Duty Tape Dispenser

Item Number	Size	Quantity/Box	Weight/Box	Cost
70043	2"wide	1	2 lbs	



Packing List Envelopes

Item Number	Size	Quantity/Box	Weight/Box	Cost
70041	4.5"x5.5"	1,000 Envelopes	7 lbs	



INDUSTRY LEADERS SINCE 1979

AA THREAD SEAL TAPE, INC.
1275 KYLE CT.
WAUCONDA, IL 60084

PH: (800) 537-7139
FX: (847) 526-2209
WWW.AATHREAD.COM