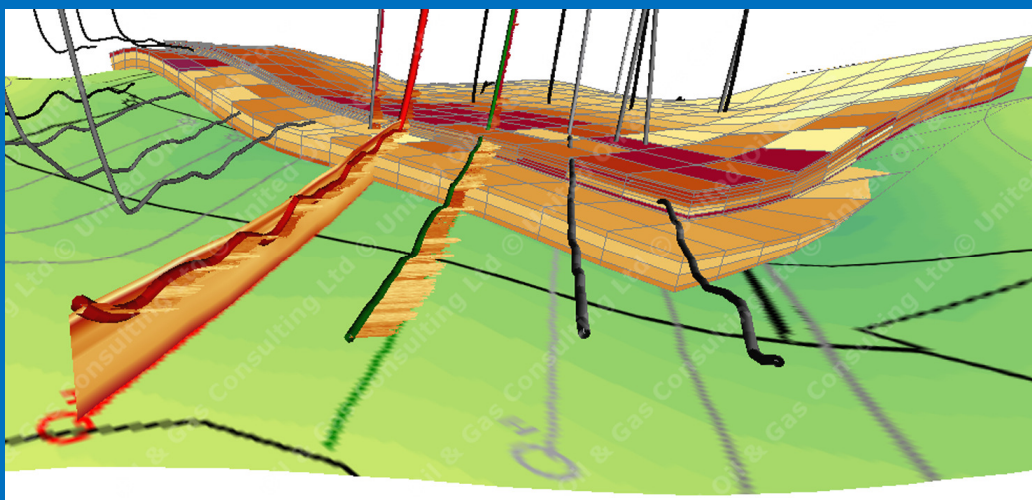


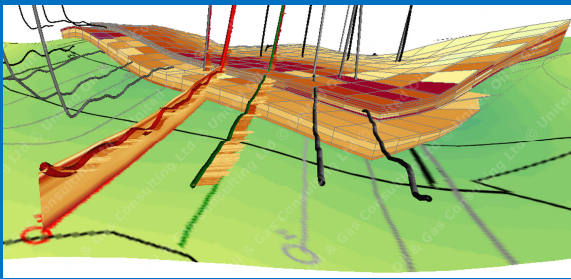
Geo-Steering Services

Quality Service From The Rig To The Lab To Completion



Quality
Hydrocarbon & Geological Services

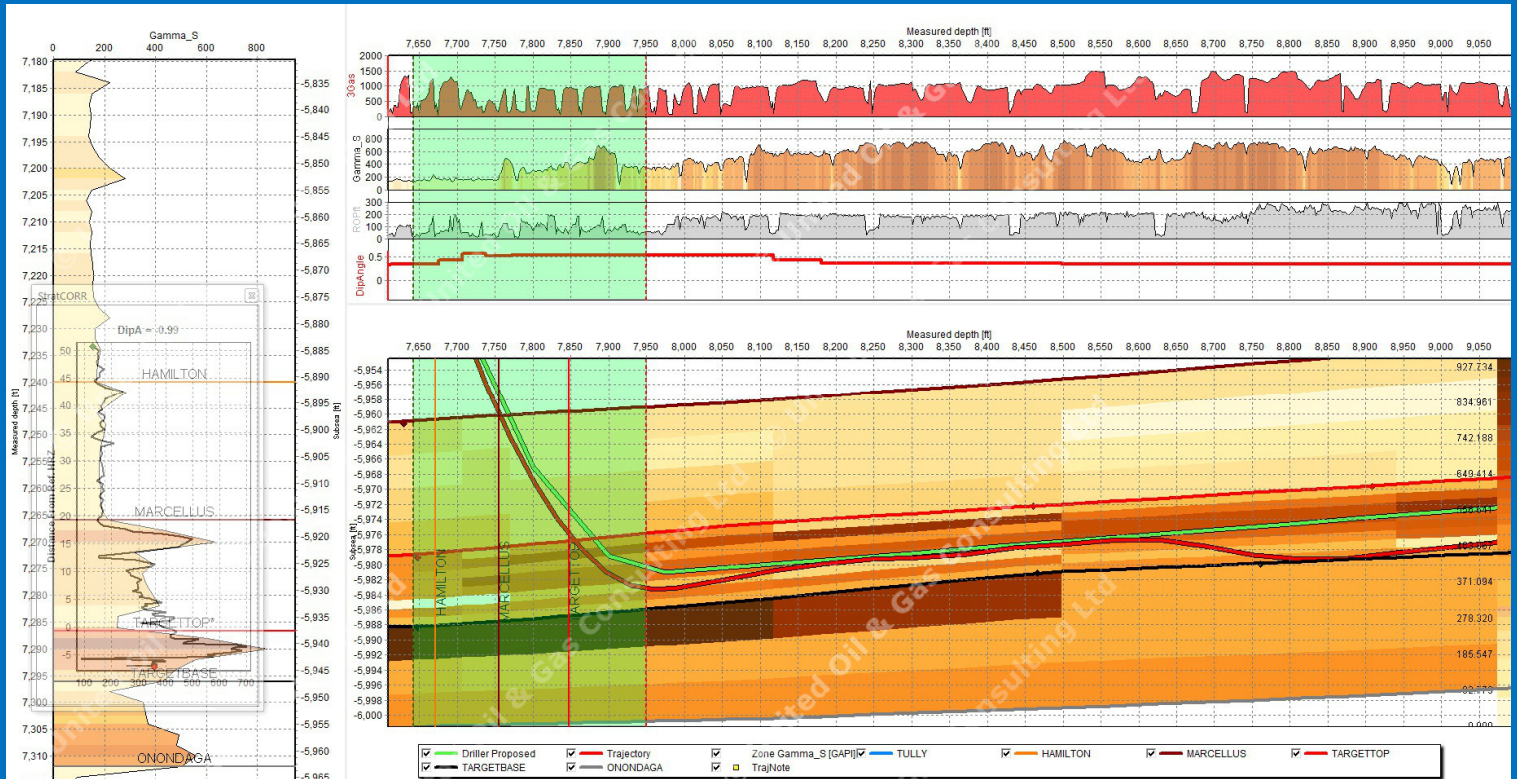
A Division of Quality Logging, Inc.



Quality HGS has entered into a joint venture agreement with United Oil & Gas Ltd for onsite geo-steering and supplemental services. United has a proven track record with experience in Canada, US, and international projects.

We determine your needs by working directly with your technical staff. Throughout the process, we ensure the success of your investments by maintaining continuous and open communication so we can align our work to your specific requirements and objectives.

SMART4D



Geosteering using while-drilling data

Our geosteering service includes automated gathering and reporting of live data. Our web enabled tools keep all shareholders informed within minutes of model changes. The horizontal profiles and panels are customized for every job and include:

- Apparent dip calculations
- ROP and Gas shows
- Radial Gamma
- Near-bit Azimuthal Gamma & Imaging
- DLS & Inclination

WITSML Data connectivity

Using SMART4D United's geosteering service gathers real-time and while-drilling rig data. This reporting of live data is available automatically through WITSML. The service that we provide to our clients is compatible with all major WITSML providers, including:

- Pason US and Canada
- National Oilwell Varco (NOV)
- Petrolink
- SDI RigGRID
- Baker Hughes WellLink
- Intellifield
- Schlumberger

Our geosteering services assist producers in optimizing their horizontal well placement and future drilling. Oriented towards operations geologists the geosteering services increase team collaboration, rapid decision-making and optimized well placement. The geosteering services create an intelligent workflow, using real-time data integration and proactive 3D re-mappings to reduce drilling issues. This allows us to better anticipate the drilling corridor ahead of the bit for better sweet spot well placement.

With service levels tailored to needs of our clients and the complexity of the reservoir, We are able to offer you the service solution you need. Here is a sample of what we deliver:

- Characterization modelling while-drilling in 3D (gamma, azimuthal gamma and resistivity)
- Automated data retrieval through WITSML
- Global experience
- 24/7 support
- Proactive way point recommendations
- Web-based reporting for team viewing
- 3D geo-model adjustments
- Real-time imaging
- Immersive 3D views
- Interactive SMART4D Panels
- Collision avoidance features



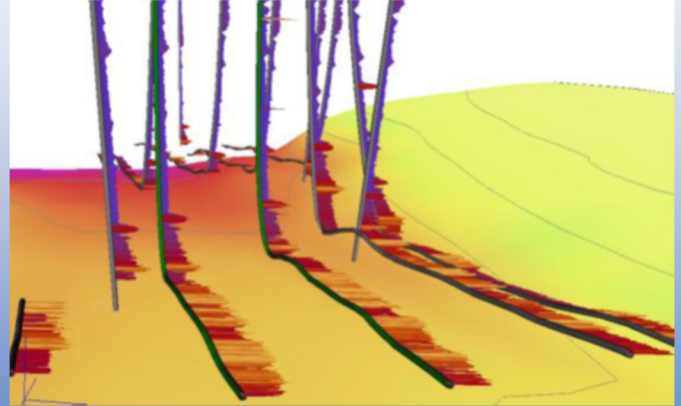
Geo-Steering

Geo-Modeling

Reservoir Engineering Services

Geo-Steering Software

Reservoir Engineering Software



1800 Dayton Road
Midland, TX 79706

432-682-7168 phone
432-682-7199 fax

www.qualitylogging.com

Richard Martin

CEO

1-432-894-0707

Richard@QualityLogging.com

Chad Stephens

VP Operations

1-432-425-2770

Chad@qualitylogging.com

Quality
Hydrocarbon & Geological Services

Quality Service From The Rig To The Lab To Completion