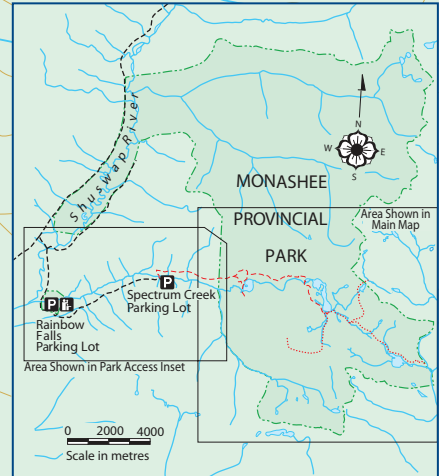
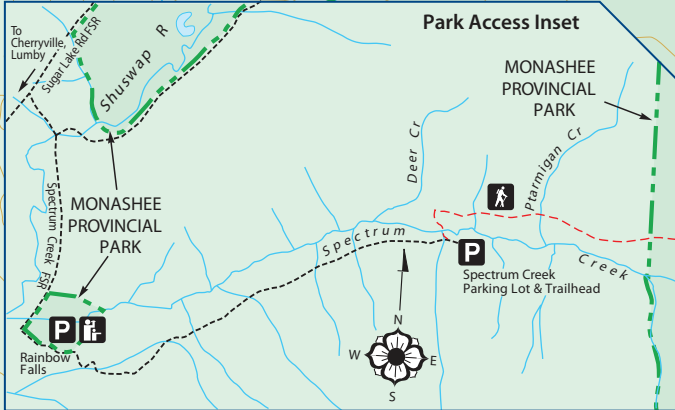
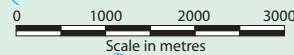
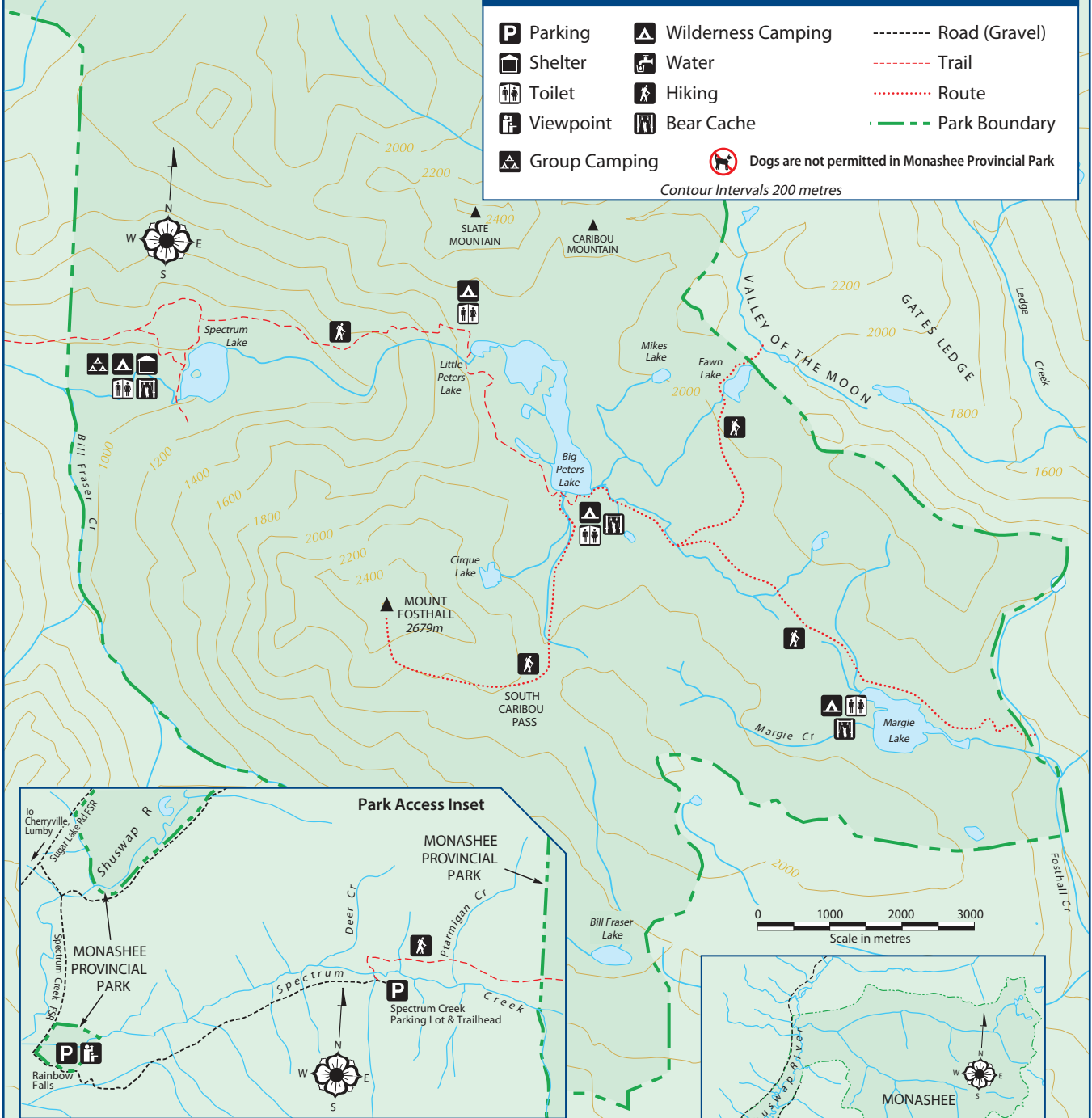


Monashee Provincial Park

LEGEND

- Parking
- Shelter
- Toilet
- Viewpoint
- Group Camping
- Wilderness Camping
- Water
- Hiking
- Bear Cache
- Dogs are not permitted in Monashee Provincial Park
- Road (Gravel)
- Trail
- Route
- Park Boundary

Contour Intervals 200 metres



Trail Information (all times are one way)

Trail to Spectrum Lake Camp
from Spectrum Creek Trailhead 1.5-2 hours Easy

Trails to Alpine Areas (from Spectrum Lake) Camp
 Little Peter's Lake Camp Distance 6.5 km 2-4 hours Difficult
 Big Peter's Lake Camp Distance 9 km 4-5 hours Difficult

Alpine Routes (from Big Peters Lake)
 Margie Lake Distance 4.6 km 1.5-2.0 hours Easy
 Fawn Lake Distance 4.8 km 1.5-2.0 hours Moderate
 Valley of the Moon Distance 5.5 km 2.0-2.5 hours Moderate
 South Caribou Pass Distance 2.3 km 1.0-2.0 hours Difficult
 Mount Fosthall Distance 5.2 km 3.0-4.0 hours Difficult