



**American Hospital
Association**

Dedicated to optimizing the
health care physical environment

ASHE

INTRODUCTION



Dedicated to optimizing the
health care physical environment



Who is ASHE?

- Largest association dedicated to health care physical environment
- Over 11,000 Members
- Trusted Industry Resource

ASHE Mission

Dedicated to optimizing the
health care **physical environment**



Dedicated to optimizing the
health care physical environment



Optimize the Health Care Physical Environment

Strategic Goals: Regulation, Reputation, and Capacity

Advocacy

Professional
Development

Networking

Information
Resource



Dedicated to optimizing the
health care physical environment



ASHE Strategic Initiatives

- Unified Code
- Succession Planning
- Health Facility Commissioning



Dedicated to optimizing the
health care physical environment



Benefits of ASHE Membership?

- Membership makeup
- Membership types
- Cost
- Benefits
 - Advocacy
 - Codes
 - Resources
 - Network
 - Growth



**EXPLORE THE BENEFITS
OF ASHE MEMBERSHIP**

www.ashe.org/explore
American Society for Healthcare Engineering
Of the American Hospital Association
155 North Wacker, Suite 400
Chicago, IL 60606
Phone: 312-422-3800 E-mail: ashe@aha.org



Dedicated to optimizing the
health care physical environment



What does ASHE do?

- Issue Briefs
- Monographs
- Just Ask ASHE
- List Serve
- Blog
- New ASHE APP
- Webinars



Dedicated to optimizing the
health care physical environment

Get expert insights on Fire Safety Evaluation System (FSES) submissions from the Joint Commission and a life safety expert with this new ASHE webinar (CEUs available).

Completing a Health Care FSES: What You Need to Know in Order to Execute a Successful Submittal

ONE WEEK AWAY! MUST REGISTER 24 HOURS IN ADVANCE

REGISTER NOW! ▶

**Tuesday, Sept. 17, 2013
2 to 3 p.m. CT**

Under certain conditions, an FSES can reduce costs and save time. This [webinar](#) will provide the information needed to present alternative compliance solutions for your facility through use of NFPA 101A methodology. Learn how the FSES measuring system differs from the *Life Safety Code®* in terms of the level of safety provided through the use of safeguards, and get tips for expediting your facility's FSES review process.



Dedicated to optimizing the
health care physical environment



American Hospital
Association

ASHE:

ADVOCACY HIGHWAY



Dedicated to optimizing the
health care physical environment



ASHE Advocacy Program

- Representation
 - National
 - Regional
 - State
- Proactive Efforts
 - Managing code and standards



The ASHE Advocacy Highway

- Two-way means of communication between ASHE and chapters



www.ashe.org/advocacyhighway

A Two-Way Highway

- ASHE learns about local issues from chapter advocacy liaisons
- Advocacy liaisons learn about national issues from ASHE



Repaving Work Underway

- ASHE advocacy leaders met with liaisons in December
- ASHE staff and liaisons continue to communicate on advocacy issues



Advocacy Liaisons

- Advocacy leaders can help – but they have to know about the problem
- Communications through the Advocacy Highway are critical
- Advocacy Liaisons or Chapter Presidents should be attending quarterly conference calls

ASHE:

UNIFIED CODE

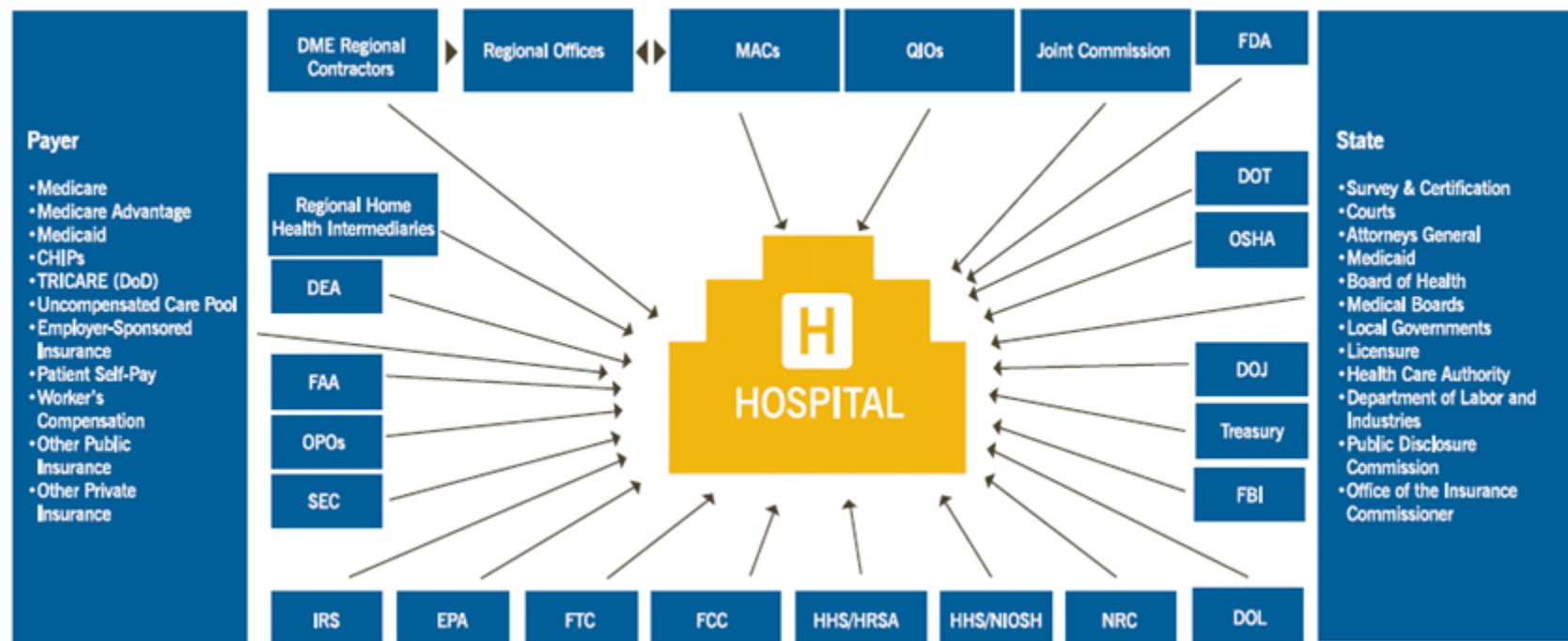


Dedicated to optimizing the
health care physical environment



Codes and Standards

Who Regulates Hospitals?



Source: American Hospital Association

<http://www.aha.org/aha/trendwatch/2011/11mar-tw-costofcaring.pdf>

Poor Codes Cost Money without Improving Safety

- **\$9 billion** a year wasted because of unnecessary codes and standards
- Small things could have a profound effect nationwide



Adoption of Recommended Codes

- Working on long term plan to develop a unified set of recommended codes for adoption
- Objectives
 - Improve quality and increase access to healthcare using cost savings from unnecessary and costly codes and regulations
 - Identify unnecessarily increased costs
 - Identify recommended codes and regulations

ICC Ad hoc on Healthcare Committee

- Prepared 35 proposals for IBC
- 26 Approved
- Prepared 33 proposals for IFC
- 29 Approved at Committee Action Hearing
- Prepared 7 proposals for IEBC
- 6 Approved at Committee Action Hearing



ICC Ad hoc on Healthcare Committee

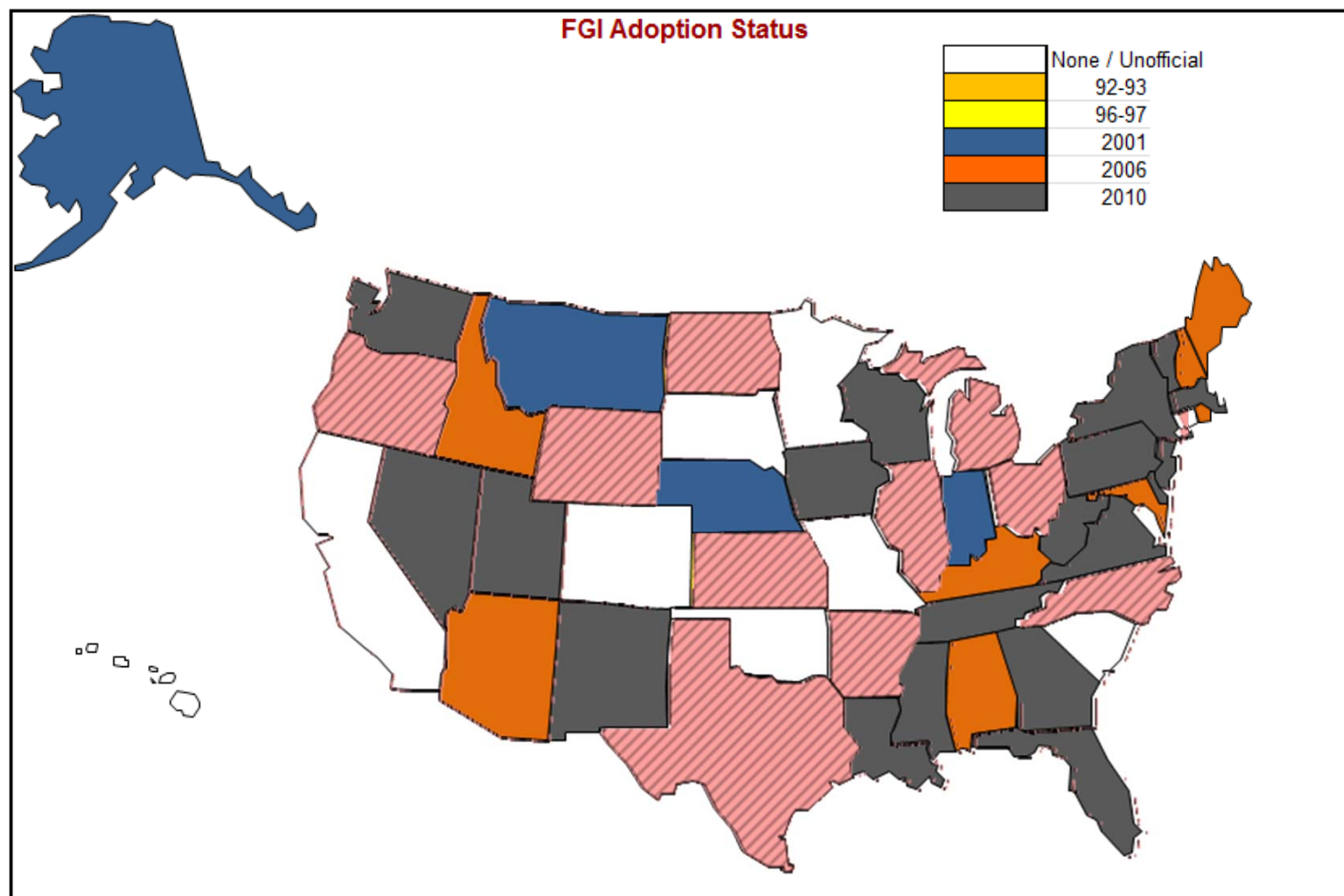
- Align IBC with Life Safety Code
- Align IFC/IEBC with K-tags
- Example Approved Proposals
 - Smoke dampers exemption in hospitals
 - Wheeled equipment allowed in corridors
 - Increase in suite and smoke compartment sizes
 - Placement and storage of ABHR's
 - Eliminate maintenance of non-required fire safety requirements



Guidelines Adoption

- Current adoption status
- Research based decisions
- Advantages of uniformity across nation





Dedicated to optimizing the
health care physical environment



American Hospital
Association

ASHE Strategic Imperative:

COMMISSIONING



Dedicated to optimizing the
health care physical environment



American Hospital
Association

Commissioning

- About the HCFx Guidelines & Handbook
- Advantages of commissioning
- Cost savings
- ADVOCACY
 - Incorporation of HCFx Guidelines into the FGI



ASHE Resources

Publications and Tools

- Monographs/Reports
- Physical Environment References
- Sustainability Roadmap
- E²C



Dedicated to optimizing the
health care physical environment



AHA Norton Identity Safe AIA Alaska Air 2014 FGI Comments 2014 FGI Proposals AMEX Travel ASHE Fitbit Fat Sick and Nearly ...

Home Contact **LISTSERV®** Search

SUSTAINABILITY Roadmap for Hospitals

A guide to achieving your sustainability goals

About Topics Drivers Strategies Implementation Resources



Use the Roadmap's [target-setting tools](#) to help define goals and create a strategic plan to improve your facility's sustainability. Learn more [about the Energy Efficiency Challenge \(E2C\)](#), [watermark! tool](#), and [waste target-setting tools](#).

Sustainability News

- President Obama releases Climate Action Plan
- Sustainability efforts could save the health care industry \$15B over 10 years

Industry News

- Extraordinary steps health care providers are taking to prepare for climate change
- Yale-New Haven Hospital launches effort to reduce



Roadmap Highlights

- Replace AHU filters regularly.
- Evaluate setback of temperature and airflow settings at night.
- Install variable frequency drives on pumps and motors.
- Use standardized environmental questions in purchasing medical products.
- Fluorescent lighting management and recycling
- Improve waste-handling, container utilization, and management process

- The Sustainability Roadmap site is intended to provide tools and resources that are vendor-, product-, and service provider-neutral. All Roadmap materials are available for download without charge.

- **Topics**—An overview of topic areas, including Building Design And Construction, Commissioning, Energy (and emissions), Water (and effluent), Waste, Supply Chain, and Chemicals.
- **Drivers**—A description of factors that might motivate a health care organization to develop a sustainability program.
- **Strategies**—A guide and set of tools for strategic planning.
- **Implementation**—A clearinghouse of performance improvement measures (PIMs) to help you implement your action plans.

ASHE Strategic Imperative:

SUCCESSION PLANNING



Dedicated to optimizing the
health care physical environment



ASHE Personal Growth ASHE Education Portfolio

Health Care
Facility Management | **FUNDAMENTALS**®

Health Care
CONSTRUCTION | **CERTIFICATE WORKSHOP**®

Health Care
Facility Management
and Construction | **INFECTION PREVENTION**®

Health Care
Facility Management | **MANAGING THE PDC PROCESS**®

Health Care
Facility Management | **MANAGING ACCREDITATION**®

Health Facility | **COMMISSIONING**®



**Certification Preparation
Workshops**

**CERTIFIED HEALTH CARE FACILITY MANAGER
EXAM REVIEW COURSE**

**CERTIFIED HEALTH CARE CONSTRUCTOR
EXAM REVIEW COURSE**



Dedicated to optimizing the
health care physical environment





INTERNATIONAL SUMMIT & EXHIBITION ON
Health Facility Planning, Design & Construction
MARCH 16-19, 2014 | ORLANDO, FLORIDA

- Attendee Mix: 28% A/E; 27% Construction 24% Facility, 21% Other
- Summit Collaborators: ACHA, FGI, AGC, AAHID, AIA / AAH, ASHRAE
- Make for a rich, collaborative learning environment
- 2013 Highlights Video: <http://www.ashe.org/PDC/>



Education Tracks Presented

ACHA Masters Series	Fundamentals of PDC	Innovation in Design
Leadership	Performance Metrics	Regulatory Issues



Dedicated to optimizing the
health care **physical environment**





51st ASHE Annual Conference and Technical Exhibition

August 3-6, 2014 | Chicago, IL



- Education Tracks:
 - Compliance Strategies
 - Operational Excellence
 - PDC for the Facility Manager
 - Management Development
 - Delivering Value
 - Fundamentals



Visit www.ashe.org/annual for more information



Dedicated to optimizing the
health care physical environment



ASHE Personal Growth



Call for Volunteers

<http://www.ashe.org/about/volunteer.html>

Beta-testing ASHE programs
Focus Groups
Committees, and
Task forces



Dedicated to optimizing the
health care physical environment



Ways Chapters Can Help

- Designate a chapter Advocacy Liaison
- Active chapter advocacy liaison
 - Participates in ASHE advocacy conference calls
 - Reports ASHE advocacy news to chapter members
- Report poor code interpretations through Advocacy Highway www.ashe.org/advocacyhighway



Dedicated to optimizing the
health care physical environment



Ways Chapters Can Help

Developing a Legislative Presence

- Educate legislators on key issues
- National Conference of State Legislators



Ways Chapters Can Help

Support Evidence-Based Codes

- Work with key organizations to develop a model process for evidence-based codes
- Provide structure to enforce evidence based decisions
- Work with Chapter Advocacy Liaison to promote evidence-based codes

C9

sign up for the coalition!

Chad E. Beebe, AIA, 2/21/2013

More Ways Chapters Can Help

- Spend a few minutes of chapter meetings discussing codes and standards issues affecting your members.
- Actively engage state authorities (fire marshal, licensing agencies) and organizations (hospital, health care) – NOW, not after an issue becomes critical.



Dedicated to optimizing the
health care physical environment



American Hospital
Association