



**LEHANE**

# **CENTRIFUGAL CLUTCHES**



**Australia's foremost  
manufacturer  
Of centrifugal clutches**

**SELECTION MANUAL AND ITEM CATALOGUE**

**Australian Manufacturers and Distributors of Centrifugal Clutches**

57 Railway Street  
Yennora NSW 2161  
Sydney Australia

PH: (02) 9632-6549 FAX: 61+ 2 + 9892-1820

Email: [info@lehanecc.com](mailto:info@lehanecc.com)  
Web: [www.lehanecc.com](http://www.lehanecc.com)



**ALL CLUTCHES ARE SUPPLIED WITH BALL BEARINGS AND A GRUB SCREW MOUNTING**

(NOTE:- MODEL OF CLUTCH WILL VARY DEPENDING ON OPERATING RPM.)  
(THESE CLUTCH SELECTIONS ARE BASED ON 1800 RPM MINIMUM OPERATING SPEED)

**MODEL : 5HD SERIES JOB NUMBER 3229**

AVAILABLE PULLEY SIZES : 123.8mm PCD 2B SECTION (STANDARD)  
: 111.1mm PCD 2B SECTION

AVAILABLE BORE SIZES : 25mm, 1", 28mm, 1 1/8", 30mm, 32mm & 1 7/16".

ENGINE GUIDE **SUIT** : KUBOTA RK50, YANMAR TF60, L48AE, HATZ 1B20,  
1B40, 1D41, OR EQUIVALENT ENGINES.

---

**MODEL : 6 SERIES JOB NUMBER 7100/7133**

AVAILABLE PULLEY SIZES : 111.1mm PCD 2B or 2B (DG) SECTION  
(STANDARD) : 123.8mm PCD 2B or 2B (DG) SECTION  
: 142.9mm PCD 2B SECTION  
: 114.3mm PCD 2A SECTION  
: 108mm PCD 2A (DG) SECTION

AVAILABLE BORE SIZES : 25mm, 1", 28mm, 1 1/8", 30mm, 32mm, 35mm, 1 7/16" & 1 1/2".

ENGINE GUIDE **SUIT** : KUBOTA RK60, RK70, LISTER LT1, YANMAR L70AE, L100AE,  
TF70, HATZ 1D41Z, 1D60Z, 1D80Z, 1D81Z, OR EQUIVALENT ENGINES.

---

**MODEL : 7 SERIES JOB NUMBER 4204**

AVAILABLE PULLEY SIZES : 123.8mm PCD 2B SECTION (STANDARD)  
: 123.8mm PCD 2B (DG) SECTION  
: 136.5mm PCD 2B (DG) SECTION  
: 142.9mm PCD 2B SECTION  
: 152.4mm PCD 2B (DG) SECTION  
: 161.9mm PCD 2B (DG) SECTION

AVAILABLE BORE SIZES : 25mm, 1", 1 1/8", 30mm, 32mm, 35mm, 1 7/16", 1 1/2" & 40mm  
NOTE *FOR 40mm BORE (JOB No. 4194) ADD \$38 TO LIST PRICE*

ENGINE GUIDE **SUIT** : KUBOTA RK80, RK95, RK105, LISTER LT1, LV1, TR1, TS1,  
YANMAR TF90, TF110, TF120, HATZ 1D80Z, 1D81Z, 2G30, 2G40,  
OR EQUIVALENT ENGINES.

---

**MODEL : 7HD SERIES JOB NUMBER 5135**

AVAILABLE PULLEY SIZES : 123.8mm PCD 2B SECTION (STANDARD)  
: 123.8mm PCD 2B (DG) SECTION  
: 136.5mm PCD 2B (DG) SECTION  
: 142.9mm PCD 2B SECTION

AVAILABLE BORE SIZES : 25mm, 1", 30mm, 32mm, 1 1/2" & 40mm

ENGINE GUIDE **SUIT** : KUBOTA RK125, ER1900, ER2200, ER2500, LISTER TR2, LV2,  
YANMAR TF140, TF160, HATZ 2G40, Z790 OR EQUIVALENT ENGINES

---

**MANY OTHER PULLEY AND BORES SIZES ARE AVAILABLE UPON REQUEST**  
*FOR OTHER STOCK CLUTCHES, SEE PAGES 13, 14, 15 & 16*



# LEHANE CENTRIFUGAL CLUTCHES

AUSTRALIAN MANUFACTURES SUPPLYING THE WORLD

**PH: (02) 9632- 6549 FAX: (02) 9892-1820**

## CLUTCH INDEX

PAGE 1	STANDARD CLUTCHES USED ON PUMPING EQUIPMENT
PAGE 2	CLUTCH INDEX
PAGE 3	SELECTION & MAINTENANCE GUIDE
PAGE 4	SELECTION & MAINTENANCE GUIDE
PAGE 5	SELECTION & MAINTENANCE GUIDE
PAGE 6	SELECTION EXAMPLE, HOW TO SELECT A CLUTCH
PAGE 7	BASIC OUTLINE DRAWING OF CLUTCHES
PAGE 8	HORSEPOWER RATING WITH 750 R.P.M. ENGAGEMENT SPEED
PAGE 9	HORSEPOWER RATING WITH 1000 R.P.M. ENGAGEMENT SPEED
PAGE 10	HORSEPOWER RATING WITH 1500 R.P.M. ENGAGEMENT SPEED
PAGE 11	HORSEPOWER RATING WITH 1800 R.P.M ENGAGEMENT SPEED
PAGE 12	4 HD SELECTION TABLE & STOCK CLUTCHES
PAGE 13	5 & 5HD SELECTION TABLE & STOCK CLUTCHES
PAGE 14	6 SERIES SELECTION TABLE & STOCK CLUTCHES
PAGE 15	7 SELECTION TABLE & STOCK CLUTCHES
PAGE 16	7 HD & 7HD(HE) SELECTION TABLE & STOCK CLUTCHES
PAGE 17	9 HD SELECTION TABLE
PAGE 18	10HD SELECTION TABLE AND FM CLUTCH RANGE
PAGE 19	INLINE CENTRIFUGAL CLUTCH
PAGE 20	INSTALLATION INSTRUCTIONS FOR INLINE CLUTCHES
PAGE 21	MAX-TORQUE SPARE PARTS
PAGE 22	MAX-TORQUE CLUTCH RANGE AND PRICES
PAGE 23	SPARE PARTS LIST FOR, SHOES, SPRINGS & CIRCLIPS
PAGE 24	SPARE PARTS LIST FOR, SINTERED BUSHES, BEARINGS, WASHERS & PINS

***FOR PRICES OR QUOTES PLEASE CONTACT US ON***

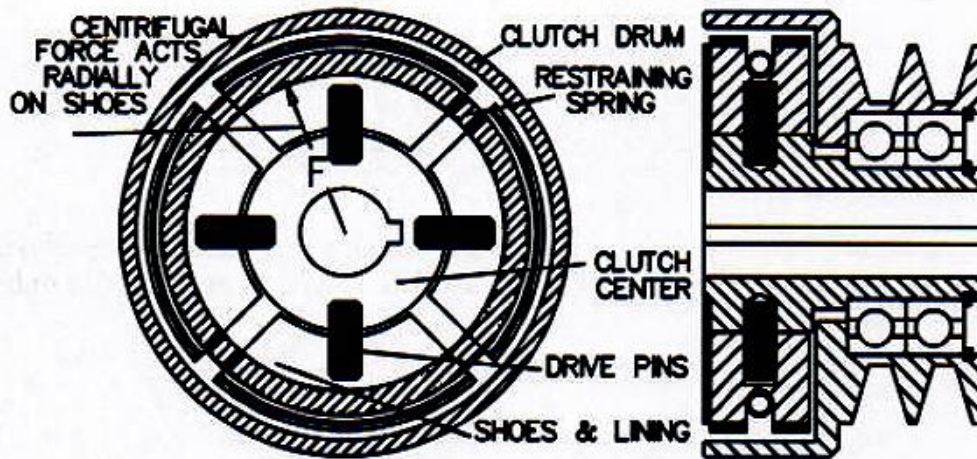
**PH: (02) 9632-6549**

**FAX: (02) 9892-1820**



# SELECTION MANUAL

A **Centrifugal Clutch** as it's name implies gets it's drive pressure from centrifugal force, as opposed to a Disc, Cone or OVERCENTRE clutch that gets it's pressure from springs or wedge action.

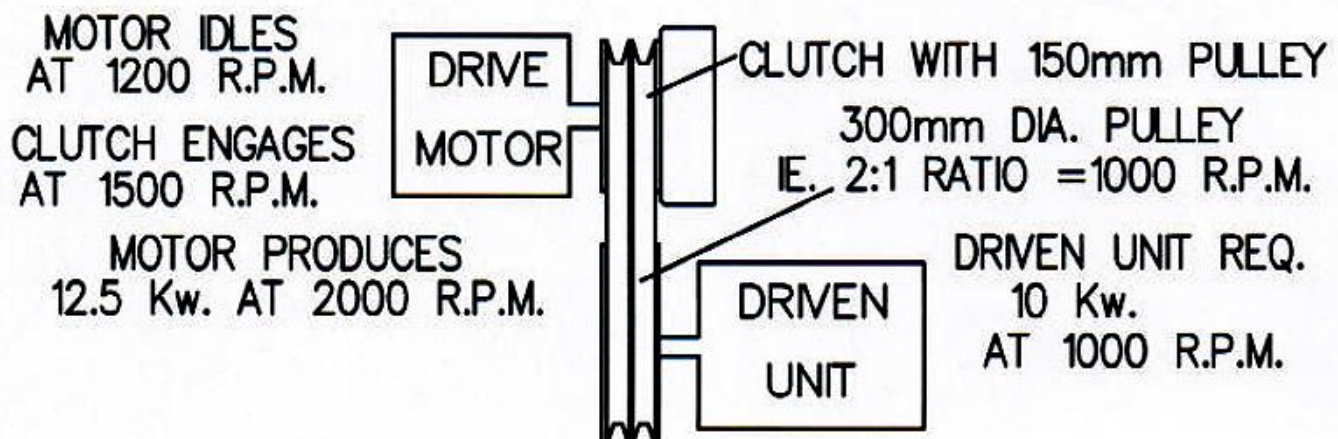


## OPERATION OF A 'LEHANE' CENTRIFUGAL CLUTCH

When the clutch centre and shoes are rotated by the driving motor centrifugal force is applied to the Shoes & Lining. As this force is increased by R.P.M increase, up to the point where the force over comes the restraining spring pressure, the shoes then throw out on the drive pins and contact the drum that begins to rotate with the clutch driving elements. This stage is referred to as "Engagement R.P.M" (Note there is very little power transmission at this stage). As the R.P.M increases the power transmission capability increases at the rate of the square of the R.P.M increase. E.G. 1000 R.P.M = 2kW, 2000 R.P.M = 4kW & 4000 R.P.M = 16kW.

With the above facts in mind a "Lehane" centrifugal clutch operates most efficiently when,

- (1) The idle R.P.M of the drive motor is approximately 75% of engagement R.P.M (this prevents the shoe drag and heat generation).
- (2) The operating R.P.M of the clutch is approximately 25% power requirement of driven unit (this can be obtained by suitable pulley ratio).



**MOTOR TYPE: - E.G. DIESEL, PETROL OR ELECTRIC.**

Motor type is important because a Diesel or Electric Motor usually runs at a more constant R.P.M under varying loads than an equal size Petrol Motor. Therefore it is advisable to select a slightly larger clutch to allow for the drop in R.P.M of the motor.

**BRAND AND MODEL OF MOTOR: - E.G. KUBOTA RK 70.**

Through experience it has been found that particular motors have unique characteristics that influence the selection of a suitable clutch, E.G. a clutch on a motor with a small flywheel is often more reliable running at higher R.P.M to reduce pulsing loads on the clutch. Therefore a smaller pulley selection is advisable.

**IDLE R.P.M. OF MOTOR: - 800 R.P.M.**

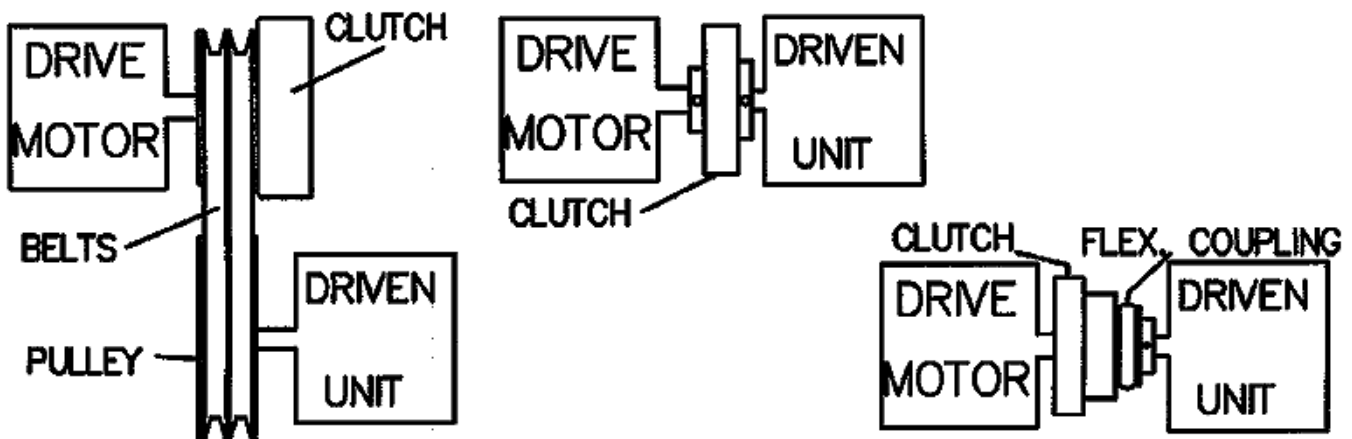
A motor that will idle at low R.P.M is desirable because the clutch can properly disengage, this eliminates heat build up by a partially engaged clutch. A clutch with a low engagement R.P.M will have more capacity, as can be seen from our selection charts on pages 8, 9, 10 & 11 of our price list.

**MAXIMUM kW'S OF MOTOR AT MAX. R.P.M : E.G. 15kW. AT 3600 R.P.M. & kW'S REQUIRED AT OPERATING R.P.M :-E.G. 12.5kW. AT 2000 R.P.M.**

Maximum kW,s and kW,s at under load operating R.P.M are important factor when selecting a clutch. Usually the engine does not run at Maximum R.P.M under operating conditions. More often running at approximately 70% of Maximum R.P.M in the higher torque range of the motor. Therefore a motor rated at 5kW at 3600 R.P.M will produce approximately 3.5kW at 2500 R.P.M. A clutch should be selected to transmit 3.5kW at 2500 R.P.M.

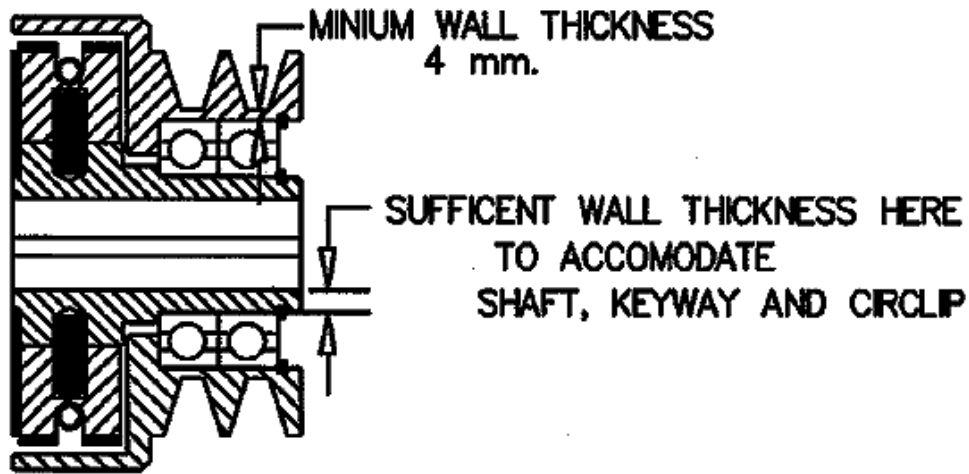
**TYPE OF DRIVE REQUIRED ON CLUTCH: - E.G. INLINE, PULLEY, ETC.**

Often the physical layout governs the type of clutch required. A Pulley clutch usually gives flexibility in alignment, centre distance and the ability (by different pulley sizes) to run the engine at optimum R.P.M. A two piece Inline configuration is a popular choice where cost and simplicity are factors, but accurate alignment and good rigidity are essential. A better option is a ball bearing clutch with a flexible coupling to the driven unit.



**SIZE OF PULLEY: -E.G. 100mm P.C.D**

Pulley diameter requires special consideration, not only to obtain correct drive ratio, but also physically fit over bearings, with a strong enough wall thickness between minor diameter of pulley grooves and outside diameter of bearings (bearing size is influenced by shaft size etc.)



**NUMBER OF PULLEY GROOVES & BELT SECTION:- E.G. 2A OR 3SPA ETC.**

These factors are usually controlled by belt power transmission capabilities and pulley configuration on driven pulley.

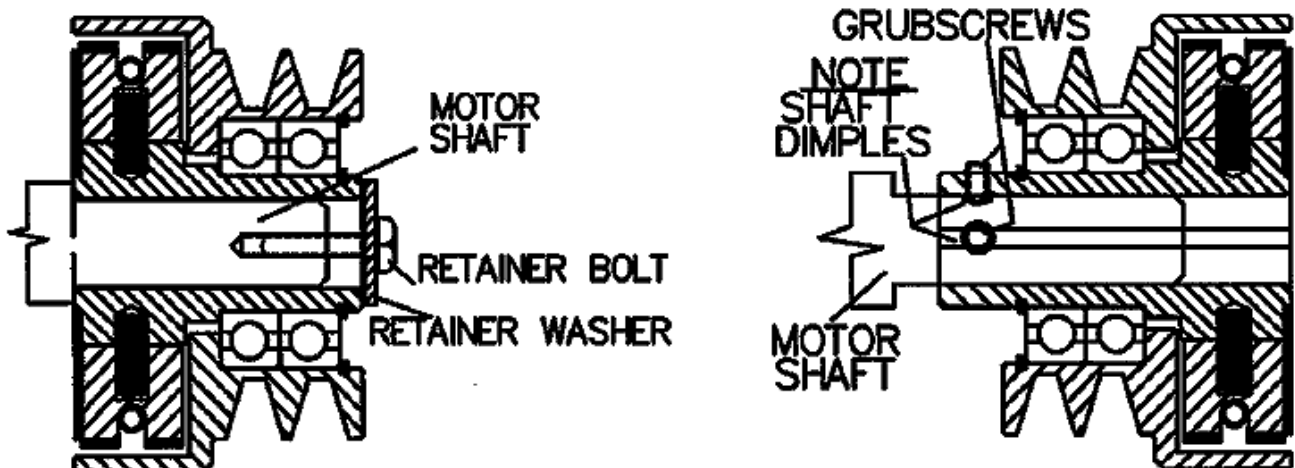
**SHAFT SIZE & KEYWAY SIZE:- E.G. 28mm DIAMETER x 7mm KEYWAY.**

These dimensions usually controlled by P.T.O shaft on chosen motor.

**TYPE OF SHAFT FIXING:- E.G. WASHER & BOLT or GRUB SCREWS.**

Grub screws are most common with its simplicity and versatility.

Washer & bolt is used where motor shaft is threaded to take a mounting bolt. This type of fixing is very reliable, but requires a suitable shoulder on crankshaft to clamp against.





# LEHANE CENTRIFUGAL CLUTCHES

AUSTRALIAN MANUFACTURERS SUPPLYING THE WORLD

PH: (02) 9632-6540 FAX: (02) 9892-1820

## TO SELECT A SUITABLE CLUTCH, THESE ARE THE 6 FACTORS TO CONSIDER

1. BASIC CLUTCH SIZE (*TO TRANSMIT REQUIRED POWER*) PAGES 8,9,10 & 11(BLUE PAGES)
2. PULLEY SIZE (*FOR CORRECT DRIVE SPEED*)
3. NUMBER AND TYPE OF GROOVES (*FOR EFFECTIVE POWER TRANSMISSION*)
4. TYPE OF BEARING (*FOR LONG OR SHORT IDLE PERIODS*)
5. FIXING ARRANGEMENT TO SHAFT (*i.e. GRUB SCREW OR WASHER*)
6. SHAFT SIZE AND KEYWAY (*DETERMINED BY DRIVE MOTOR*)

## EXAMPLE

TO ORDER A CLUTCH TO TRANSMIT 7.0 kW AT 2600 R.P.M., ENGAGEMENT SPEED 1500 R.P.M, 127mm (5") DIA x 2 'A' SECTION, BALL BEARING, WASHER MOUNTED, 25mm SHAFT, 7mm KEY.

SELECT FROM PAGE 10 i.e. (*1500 ENGAGEMENT TABLE*)  
5 HD CLUTCH (*7.0 kW AT 2600 R.P.M.*)

SELECT FROM PAGE 13 i.e. (*5 HD SHEET*) PULLEY SIZE, BEARINGS,  
MOUNTING STYLE AND SHAFT SIZE.

## **CLUTCHES SHOULD BE ORDERED AS FOLLOWS:-**

5 HD 127mm 2A BW x 25mm BORE (*FROM PAGE 13*)

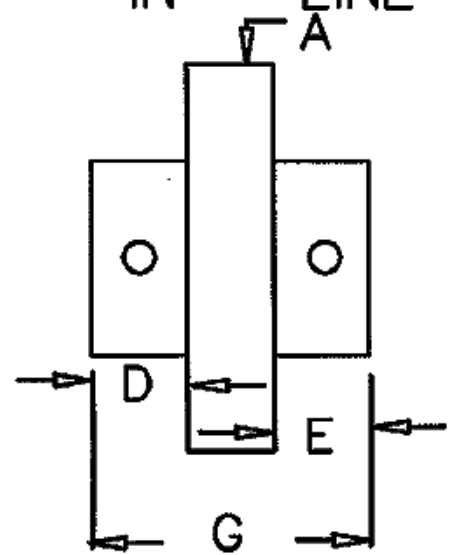
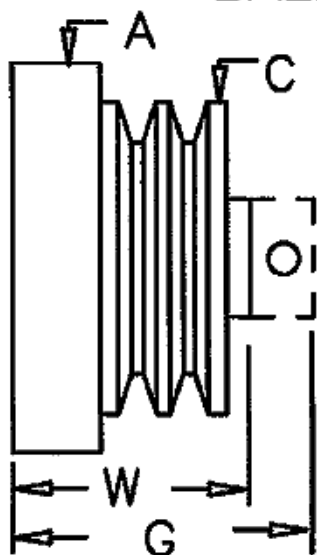
NOTE:- "*CHECK STANDARD OFF THE SHELF CLUTCHES FOR PRICE SAVINGS*"

**FOR PRICES OR QUOTES PLEASE CONTACT US ON  
AUSTRALIA PH: (02) 9632-6549 FAX: 61+(2) 9892-1820**

MODEL		4HD	5	5HD	6	7	7HD	9HD	10HD		
PULLEY 1 A	C	A	102	127	127	150	191	191	229	257	
		MAX	145	140	NOTE: ALL SIZES IN MM.  MAX. BORE RESTRICTED BY MINIMUM PULLEY DIAMETER.  SOME LARGER BORES AVAILABLE ON APPLICATION.						
		MIN	89	105							
	MAX BORE	20	28.5								
	W(washer)	52	65								
	G(grubscrew)	63	77								
PULLEY 1 B	C	MAX	145	140							
		MIN	102	105							
	MAX BORE	20	28.5								
	W(washer)	52	70								
G(grubscrew)	63	82									
PULLEY 2 A	C	MAX	102	140	140	15	209				
		MIN	89	105	105	121	133				
	MAX BORE	20	28.5	28.5	38.1	42					
	W(washer)	65	80	80	88	93					
	G(grubscrew)	71	92	92	100	105					
PULLEY 2 B	C	MAX		140	140	156	209	209	254	254	
		MIN		105	105	121	133	133	133	153	
	MAX BORE		28.5	28.5	38.1	42	42	42	42	46	
	W(washer)		90	90	88	93	113	151	151		
	G(grubscrew)		98	98	100	105	125	170	170		
ALL OTHER PULLEY SPECS. ON APPLICATION											
IN LINE	D	19	22	22	25	25	25	25	35		
	E	13	32	32	25	45	44	54	60		
	G	62	101	101	96	116	134	145	164		
	MAX BORE	22	32	32	38.1	50.8	50.8	88.9	88.9		

BALL BEARING

IN - LINE





# LEHANE CENTRIFUGAL CLUTCHES

PH:(02) 9632-6549

FAX:(02) 9892-1820

FOR POWER RATINGS ABOVE THIS RANGE REFER TO OUR "FM" RANGE

OPERATING R.P.M.		POWER RATINGS WITH A 750 R.P.M. ENGAGEMENT SPEED							
		4HD	5	5HD	6	7	7HD	9HD	10HD
800	HP.	---	---	---	.12	.25	.5	.9	1
	Kw.	---	---	---	.1	.2	.37	.65	.75
900	HP.	---	---	---	.3	.5	1.7	3	3.7
	Kw.	---	---	---	.22	.37	1.3	2.2	2.8
1000	HP.	---	---	.25	.8	2	3.5	6	8
	Kw.	---	---	.2	.6	1.5	2.6	4.5	6
1200	HP.	---	---	.5	2	4	8	15	20
	Kw.	---	---	.4	1.5	3	6	11	15
1400	HP.	.25	.75	1	4	8	14	27	35
	Kw.	.2	.6	.75	3	6	10.4	20.1	26.1
1500	HP.	.5	1	2	5	10	18	35	45
	Kw.	.4	.75	1.5	3.7	7.5	13.4	26.1	33.5
1600	HP.	.75	2	3	6	13	24	43	55
	Kw.	.56	1.5	2.2	4.5	9.7	17.9	32	41
1800	HP.	1.2	2.5	4	9	20	36	65	85
	Kw.	.9	1.9	3	6.7	15	26.9	48	63
2000	HP.	1.5	3	5	13	28	52	93	120
	Kw.	1.1	2.2	3.7	9.7	20.9	38.8	69.4	89
2200	HP.	2	5	8	18	37	70	127	165
	Kw.	1.5	3.7	6	13.4	27.6	52	94	123
2400	HP.	2.5	6.5	11	24	49	94	169	220
	Kw.	1.9	4.8	8.2	17.9	36.5	70	126	164
2500	HP.	3	7.5	14	27	53	104	192	250
	Kw.	2.2	5.6	10.4	20.1	39.5	77	143	186
2600	HP.	4	9	17	31	64	113	218	285
	Kw.	3	6.7	12.6	23.1	47.4	84	162	212
2800	HP.	5	11	21	40	81	135	276	360
	Kw.	3.7	8.2	15.6	29.8	60	115	205	268
3000	HP.	6	14	26	49	108	192	343	450
	Kw.	4.5	10.4	19.4	36.5	80	143	255	337

ALL SPECIFICATIONS SUBJECT TO CHANGE WITHOUT NOTICE.

FULL RANGE OF SPARES ALWAYS AVAILABLE

FOR POWER RATINGS ABOVE THIS RANGE REFER TO OUR "FM" RANGE

OPERATING R.P.M.		POWER RATINGS WITH A 1000 R.P.M. ENGAGEMENT SPEED							
		4HD	5	5HD	6	7	7HD	9HD	10HD
1200	HP.	—	—	.3	1	2	4	7	10
	Kw.	—	—	.22	.75	1.5	3	5.2	7.5
1400	HP.	.1	.5	1.5	2.5	5	10	15	25
	Kw.	.07	.37	1.1	1.9	3.7	7.5	11.2	18.6
1500	HP.	.25	1	2.5	3.5	8	12	22	32
	Kw.	.2	.75	1.9	2.6	6	9	16.4	23.9
1600	HP.	.5	1.5	3	6	12	17	30	45
	Kw.	.4	1.1	2.2	4.5	8.9	12.7	22.3	33.6
1800	HP.	1	2	3.5	8	19	28	55	70
	Kw.	.75	1.5	2.6	6	14.2	20.9	41	52
2000	HP.	1.5	3	4	12	26	41	80	100
	Kw.	1.1	2.2	3	9	19.4	30.6	59	74
2200	HP.	1.7	4.5	7	17	30	60	115	150
	Kw.	1.3	3.4	5.2	12.7	22.4	44.8	86	112
2400	HP.	2	6	10	22	45	80	154	200
	Kw.	1.5	4.5	7.5	16.4	33.6	59	115	149
2500	HP.	2.5	7	13	26	57	90	170	240
	Kw.	1.9	5.2	9.7	19.4	42.5	67	126	179
2600	HP.	3	8	16	30	61	105	200	285
	Kw.	2.2	6	12	22.4	45.5	78	149	212
2800	HP.	4	10	20	38	78	135	260	335
	Kw.	3	7.5	15	28.3	58	100	193	249
3000	HP.	5	13	25	46	104	167	330	425
	Kw.	3.7	9.7	18.6	34.3	77	124	246	317

ALL SPECIFICATIONS SUBJECT TO CHANGE WITHOUT NOTICE.

## LEHANE CENTRIFUGAL CLUTCHES

ARE BACKED BY A COMPREHENSIVE TECHNICAL  
AND CUSTOM DESIGN SERVICE



# LEHANE CENTRIFUGAL CLUTCHES

PH:(02) 9632-6549

FAX:(02) 9892-1820

FOR POWER RATINGS ABOVE THIS RANGE REFER TO OUR "FM" RANGE

OPERATING R.P.M.		POWER RATINGS WITH A 1500 R.P.M. ENGAGEMENT SPEED							
		4HD	5	5HD	6	7 HE	7HDHE	9 HD	10 HD
1800	HP.	.4	.75	1	3.5	5	11	26	43
	Kw.	.3	.56	.75	2.6	3.8	8	19	32
2000	HP.	.8	1	1.5	7	10	22	51	85
	Kw.	.6	.75	1.1	5.2	7.4	16	38	63
2200	HP.	1.2	2.5	3	11	16	36	83	138
	Kw.	.9	1.9	2.2	8.2	12	27	62	103
2400	HP.	2	4	5	17	24	54	123	205
	Kw.	1.5	3	3.7	12.6	18	40	92	153
2500	HP.	2.4	4.5	8	20	28	64	146	243
	Kw.	1.8	3.3	6	15	21	48	109	181
2600	HP.	2.7	5	10	23	33	75	171	285
	Kw.	2	3.7	7.4	17	25	56	128	213
2800	HP.	3.7	7	13	31	44	101	229	381
	Kw.	2.8	5.2	9.7	23	33	75	171	284
3000	HP.	4.7	10	16	40	58	130	X	X
	Kw.	3.5	7.5	12	30	43	97		
3200	HP.	5.4	12	23	47	73	165	X	X
	Kw.	4	9	17	35	54	123		
3400	HP.	6	13	25	48	90	204	X	X
	Kw.	4.5	9.7	19	35	67	152		
3600	HP.	7	14	31	58	110	X	X	X
	Kw.	5.2	10.4	23	43	82			

ALL SPECIFICATIONS SUBJECT TO CHANGE WITHOUT NOTICE.

"NOTE"

7, 7XS & 7HD

MAXIMUM ENGAGEMENT R.P.M. IS 1000

REFER TO PAGES 8 & 9

LEHANE CLUTCHES

MANUFACTURED IN AUSTRALIA SINCE 1963

## LEHANE CENTRIFUGAL CLUTCHES

PH:(02) 9632-6549

FAX:(02) 9892-1820

FOR POWER RATINGS ABOVE THIS RANGE REFER TO OUR "FM" RANGE

OPERATING R.P.M.		POWER RATINGS WITH A 1800 R.P.M. ENGAGEMENT SPEED				
		4HD	5	5HD	6	7HDHE
2000	HP.	$\frac{.3}{.2}$	$\frac{.7}{.5}$	$\frac{1.2}{.9}$	$\frac{2.3}{1.7}$	$\frac{9.2}{6.8}$
	Kw.					
2200	HP.	$\frac{.7}{.5}$	$\frac{1.7}{1.3}$	$\frac{2.8}{2.0}$	$\frac{5.3}{3.9}$	$\frac{21.3}{16}$
	Kw.					
2400	HP.	$\frac{1.2}{.9}$	$\frac{2.9}{2.1}$	$\frac{4.8}{3.6}$	$\frac{9.1}{6.8}$	$\frac{36}{27}$
	Kw.					
2500	HP.	$\frac{1.5}{1.1}$	$\frac{3.6}{2.7}$	$\frac{6}{4.5}$	$\frac{11.4}{8.5}$	$\frac{45}{35}$
	Kw.					
2600	HP.	$\frac{1.8}{1.4}$	$\frac{4.4}{3.3}$	$\frac{7.2}{5.4}$	$\frac{13.8}{10.3}$	$\frac{55}{41}$
	Kw.					
2800	HP.	$\frac{2.6}{1.9}$	$\frac{6.3}{4.6}$	$\frac{10.2}{7.6}$	$\frac{19.5}{14.5}$	$\frac{78}{58}$
	Kw.					
3000	HP.	$\frac{3.5}{2.6}$	$\frac{8.3}{6.3}$	$\frac{13.7}{10.2}$	$\frac{26}{19.5}$	$\frac{104}{78}$
	Kw.					
3200	HP.	$\frac{4.5}{3.4}$	$\frac{10.8}{8.1}$	$\frac{17.8}{13.3}$	$\frac{34}{25.3}$	$\frac{135}{101}$
	Kw.					
3400	HP.	$\frac{5.4}{4.1}$	$\frac{12.7}{9.6}$	$\frac{22.5}{16.8}$	$\frac{42.8}{32}$	$\frac{171}{127}$
	Kw.					
3600	HP.	$\frac{6.5}{4.9}$	$\frac{13.5}{10.2}$	$\frac{27.8}{20.8}$	$\frac{53}{39}$	$\frac{211}{158}$
	Kw.					

ALL SPECIFICATIONS SUBJECT TO CHANGE WITHOUT NOTICE.

"NOTE"

7 &amp; 7HD

MAXIMUM ENGAGEMENT R.P.M. IS 1000

REFER TO PAGES 8 &amp; 9

SPECIAL HIGHER ENGAGEMENT SPEEDS ARE AVAILABLE  
LEHANE CLUTCHES

MANUFACTURED IN AUSTRALIA SINCE 1963



**LEHANE CENTRIFUGAL CLUTCHES****PH: (02) 9632-6549 FAX: (02) 9892-1820****4 HD CENTRIFUGAL CLUTCH LIST****STOCK PULLEY CLUTCHES***TABLE REFERS TO OUTSIDE DIAMETER OF PULLEY GROOVES*

JOB NO. 1100	4HD 89 1A BW	(3/4 OR 20mm BORE)
JOB NO. 1109	4HD 127 1A BW	(3/4 OR 20mm BORE)
JOB NO. 1130	4HD 76 1 (AB) SG	(3/4 OR 20mm BORE)
JOB NO. 1133	4HD 76 1 (AB) SW	(7/8 BORE)
JOB NO. 1143	4HD 127 2A BW	(18, 20,mm 3/4, 1 BORE)
JOB NO. 1179	4HD 89 2A BW	(3/4 OR 20mm BORE)
JOB NO. 1180 (WACKER)	4HD 127 1 A BW	(3/4 OR 20mm BORE)
JOB NO. 1185A	4HD 102 1 A BW	(3/4 OR 20mm BORE)
JOB NO. 1185	4HD 102 1 (AB) BW	(3/4 OR 20mm BORE)

**STOCK HEAVY DUTY GO-KART CLUTCHES**

JOB NO. 1186 /10	4HD 10T 41P SPKT. B G	(3/4 OR 20mm BORE)
JOB NO. 1186/12	4HD 12T 35P SPKT. B G	(3/4 OR 20mm BORE)

**STOCK INLINE CLUTCHES**

JOB NO. 1160	4HD IN- LINE G	(BORED TO ORDER 22mm MAX)
--------------	----------------	---------------------------

WASHER MOUNTED CLUTCHES AVAILABLE WITH GRUGSCREWS

**CUSTOM MADE CLUTCHES**

SPECIAL CLUTCHES WITH VARIATIONS FROM ABOVE LIST ARE AVAILABLE



# LEHANE CENTRIFUGAL CLUTCHES

PH: (02) 9632-6549 FAX: (02) 9892-1820

## 5 AND 5HD CENTRIFUGAL CLUTCH LIST

### STOCK PULLEY CLUTCHES

TABLE REFERS TO OUTSIDE DIAMETER (mm) OF PULLEY GROOVES

JOB NO. 2132HD	5HD 105mm or 127mm 2A BW	(25mm, 1, 1 1/8 BORE)
JOB NO. 2159HD	5HD 89 2 (AB) SG	(25mm, 1, 1 1/8 BORE)
JOB NO. 2179HD	5HD 105 2B BG	(25mm, 1, 1 1/8" BORE)
JOB NO. 2210HD	5HD 105 1A BW	(25mm, 1, 1 1/8 BORE)
JOB NO. 2220HD	5HD 133 2A BW	(25, 30mm, 1, 1 1/8 BORE)
JOB NO. 2222HD	5HD 127 1B BW	(25mm, 1, 1 1/8 BORE)
JOB NO. 3140G	5HD 105 2B BG	(20, 25mm, 3/4, 1, 1 1/8 BORE)
JOB NO. 3164	5HD 102 3 (AB) SG	(1, 1 1/8 BORE)
JOB NO. 3229	5HD 133 or 121mm 2B BG	(20, 25, 30, 32mm 3/4, 1, 1 1/8, 1 7/16 BORE)
JOB NO. 3268	5HD 127 2SPZ BW	(25, 30mm, 1, 1 1/8 BORE)
JOB NO. 3272	5HD 127 2 SPZ or SPX BW	(25mm, 1, 1 1/8 BORE)
JOB NO. 3275	5HD 105 3B BW	(1 BORE)
JOB NO. 3280	5HD 121 3A BW	(30mm, 1, 1 1/8, 1 7/16 BORE)
JOB NO. 3283	5HD 105 3A BW	(1, 1 1/8 BORE)
JOB NO. 3286	5HD 108 1B BW	(25mm, 1, 1 1/8 BORE)
JOB NO. 3301L	5HD 140 3A B SOLID	(1 7/16 BORE)
JOB NO. 3303	5HD 140 2A BW	(20, 25mm, 3/4, 1, 1 1/8 BORE)

### STOCK HEAVY DUTY GO-KART CLUTCHES

JOB NO. 3290/10	5HD 10T 41P SPKT B G	(25mm, 1, 1 1/8 BORE)
JOB NO. 3290/12	5HD 12T 35P SPKT B G	(25mm, 1, 1 1/8 BORE)

### STOCK INLINE CLUTCHES

JOB NO. 3160	5HD INLINE G	MAX BORES 32mm INPUT(B2) . 45mm OUTPUT.(B1)
--------------	--------------	---

WASHER MOUNTED CLUTCHES AVAILABLE WITH GRUBSCREWS

### CUSTOM MADE CLUTCHES

SPECIAL CLUTCHES WITH VARIATIONS FROM ABOVE LIST ARE AVAILABLE



# LEHANE CENTRIFUGAL CLUTCHES

AUSTRALIAN MANUFACTURERS SUPPLYING THE WORLD

PH: (02) 9632-6549

FAX: (02) 9892-1820

## 6 SERIES CENTRIFUGAL CLUTCH LIST

### STOCK PULLEY CLUTCHES

TABLE REFERS TO OUTSIDE DIAMETER (mm) OF PULLEY GROOVES

JOB NO. 7100-121	6 121 2B B G	(25,28,30,32mm,1,1 1/8,1 7/16,1 1/2BORE)
JOB NO. 7100-127	6 127 2B B G	(25, 30, 32mm, 1, 1 1/8, 1 7/16, 1 1/2BORE)
JOB NO. 7100-133	6 133 2B B G	(25, 30, 32mm, 1, 1 1/8, 1 7/16, 1 1/2BORE)
JOB NO. 7100-152	6 152 2B B G	(25, 30, 32mm, 1, 1 1/8, 1 7/16, 1 1/2BORE)
JOB NO. 7100-127DG	6 127 2B (DG) B G	(25, 30, 32mm, 1, 1 1/8, 1 7/16, 1 1/2 BORE)
JOB NO. 7100-140DG	6 140 2B (DG) B G	(25, 30, 32mm, 1, 1 1/8, 1 7/16, 1 1/2 BORE)
JOB NO. 7124	6 121 3B B W	(1, 1 1/8,1 7/16 BORE)
JOB NO. 7125	6 105 2B B W	(1, 1 1/8 BORE)
JOB NO. 7125A	6 105 2A B W	(1, 1 1/8 BORE)
JOB NO. 7133-121	6 121 2A B G	(25, 30, 32mm, 1, 1 1/8, 1 7/16, 1 1/2 BORE)
JOB NO. 7133-133	6 133 2A B G	(25, 30, 32mm, 1, 1 1/8, 1 7/16, 1 1/2 BORE)
JOB NO. 7133-150	6 150 2A B G	(25, 30, 32mm, 1, 1 1/8, 1 7/16 1 1/2 BORE)
JOB NO. 7133-121DG	6 121 2A (DG) B G	(25, 30, 32mm, 1, 1 1/8, 1 7/16 1 1/2BORE)

### STOCK INLINE CLUTCHES

JOB NO. 7123 6 SERIES IN-LINE G MAX BORES 36mm INPUT (B2) 46mm OUTPUT (B1)

### CUSTOM MADE CLUTCHES

SPECIAL CLUTCHES WITH VARIATIONS FROM ABOVE LIST ARE AVAILABLE



# LEHANE CENTRIFUGAL CLUTCHES

AUSTRALIAN MANUFACTURERS SUPPLYING THE WORLD

PH: (02) 9632-6549 FAX: (02) 9892-1820

## 7 SERIES CENTRIFUGAL CLUTCH LIST ALL CLUTCHES COME WITH SEALED BALL BEARINGS

FOR 'A' SECTION SUBTRACT 6.35mm FROM DIA. = P.C.D  
 FOR 'SPA' SECTION SUBTRACT 5.5mm FROM DIA. = P.C.D  
 FOR 'B' SECTION SUBTRACT 9.5mm FROM DIA. = P.C.D  
 FOR 'SPB' SECTION SUBTRACT 7mm FROM DIA. = P.C.D  
 FOR DEEP GROOVE (DG) OR 1/4 TWIST ADD 6.35mm TO OUTSIDE DIA.

### STOCK PULLEY CLUTCHES

TABLES REFERS TO OUTSIDE DIAMETER OF PULLEY GROOVES

JOB NO. 4204 ALSO AVAILABLE IN	7 133mm 2B or 139.7mm 2B(DG) BG 153mm 2B, 153mm 2B (DG), 168.3mm 2B (DG) & 178mm 2B(DG)	(UP TO 1 1/2" BORE)
JOB NO. 4194 ALSO AVAILABLE IN	7 133mm 2B or 139.7mm 2B(DG) BG 153mm 2B, 153mm 2B(DG), 168.3mm 2B(DG) & 178mm (DG)	(40mm BORE ONLY)
JOB NO. 4207	7 153mm 2B BG	(46mm BORE ONLY)
JOB NO. 4233	7 153mm 3B BG	(UP TO 40mm BORE)

### CUSTOM MADE CLUTCHES

A, SPA, SPZ, AB, B, B(DG) & SPB SECTION PULLEY GROOVES (C & D SECTION P.O.A)

#### GRUB SCREW MOUNTED, 40mm MAXIMUM SHAFT SIZE

2 GROOVE	133mm	TO	153mm	(OUTSIDE DIAMETER)
3 GROOVE	133mm	TO	153mm	(OUTSIDE DIAMETER)
2 GROOVE	153mm	TO	178mm	(OUTSIDE DIAMETER)
3 GROOVE	153mm	TO	178mm	(OUTSIDE DIAMETER)
2 GROOVE	178mm	TO	220mm	(OUTSIDE DIAMETER)
3 GROOVE	178mm	TO	220mm	(OUTSIDE DIAMETER)

#### GRUB SCREW MOUNTED, 46mm MAXIMUM SHAFT SIZE

2 GROOVE	153mm	TO	178mm	(OUTSIDE DIAMETER)
3 GROOVE	153mm	TO	178mm	(OUTSIDE DIAMETER)
2 GROOVE	178mm	TO	220mm	(OUTSIDE DIAMETER)
3 GROOVE	178mm	TO	220mm	(OUTSIDE DIAMETER)
4 GROOVE	178mm	TO	220mm	(OUTSIDE DIAMETER)

OTHER VARIATIONS E.G. INLINE, SPROCKET, BORE & PULLEY SIZES AVAILABLE



# LEHANE CENTRIFUGAL CLUTCHES

AUSTRALIAN MANUFACTURERS SUPPLYING THE WORLD

PH: (02) 9632-6549 FAX: (02) 9892-1820

## 7HD & 7HD(HE) CENTRIFUGAL CLUTCH LIST

ALL CLUTCHES COME WITH SEALED BALL BEARINGS AND GRUB SCREW MOUNTING

FOR 'A' SECTION SUBTRACT 6.35mm FROM DIA. = P.C.D

FOR 'SPA' SECTION SUBTRACT 5.5mm FROM DIA. = P.C.D

FOR 'B' SECTION SUBTRACT 9.5mm FROM DIA. = P.C.D

FOR 'SPB' SECTION SUBTRACT 7mm FROM DIA. = P.C.D

FOR DEEP GROOVE OR 1/4 TWIST ADD 6.35mm TO OUTSIDE DIA.

### STOCK PULLEY CLUTCHES

TABLES REFERS TO *OUTSIDE DIAMETER (mm) OF PULLEY GROOVES*

JOB NO. 5135 7HD 133mm 2B BG (UP TO 40mm BORE)

ALSO AVAILABLE IN 153mm 2B or 139.7mm 2B(DG) or 153mm 2B (DG)

JOB NO. 5175 7HD 153mm 2B BG (46mm BORE ONLY)

JOB NO. 5178 7HD 133mm or 153mm 3B BG (UP 40mm BORE)

JOB NO. 5188 7HD 153mm 3B BG (46mm BORE ONLY)

### CUSTOM MADE CLUTCHES

A, SPA, SPZ , AB , B ,B(DG) & SPB SECTION (C & D SECTION POA)

7HD

7HD(HE)

#### GRUB SCREW MOUNTED, 40mm MAXIMUM SHAFT SIZE

2 GROOVE	133mm	TO	153mm	(OUTSIDE DIAMETER)
3 GROOVE	133mm	TO	153mm	(OUTSIDE DIAMETER)
2 GROOVE	153mm	TO	178mm	(OUTSIDE DIAMETER)
3 GROOVE	153mm	TO	178mm	(OUTSIDE DIAMETER)
4 GROOVE	133mm	TO	178mm	(OUTSIDE DIAMETER)
2 GROOVE	178mm	TO	220mm	(OUTSIDE DIAMETER)
3 GROOVE	178mm	TO	220mm	(OUTSIDE DIAMETER)
4 GROOVE	178mm	TO	220mm	(OUTSIDE DIAMETER)

#### GRUB SCREW MOUNTED, 46mm MAXIMUM SHAFT SIZE

2 GROOVE	153mm	TO	178mm	(OUTSIDE DIAMETER)
3 GROOVE	153mm	TO	178mm	(OUTSIDE DIAMETER)
2 GROOVE	178mm	TO	220mm	(OUTSIDE DIAMETER)
3 GROOVE	178mm	TO	220mm	(OUTSIDE DIAMETER)
4 GROOVE	178mm	TO	220mm	(OUTSIDE DIAMETER)
5 GROOVE	178mm	TO	220mm	(OUTSIDE DIAMETER)

#### GRUB SCREW MOUNTED, 50.8mm MAXIMUM SHAFT SIZE

2 GROOVE	172mm	TO	220mm	(OUTSIDE DIAMETER)
3 GROOVE	172mm	TO	220mm	(OUTSIDE DIAMETER)
4 GROOVE	172mm	TO	220mm	(OUTSIDE DIAMETER)
5 GROOVE	172mm	TO	220mm	(OUTSIDE DIAMETER)

OTHER VARIATIONS E.G. INLINE, SPROCKET, BORE & PULLEY SIZES AVAILABLE



# LEHANE CENTRIFUGAL CLUTCHES

AUSTRALIAN MANUFACTURES SUPPLYING THE WORLD

PH: (02) 9632-6549 FAX: (02) 9892-1820

## 9HD CENTRIFUGAL CLUTCH PRICE LIST

FOR 'A' SECTION SUBTRACT 6.35mm FROM DIA. = P.C.D  
 FOR 'SPA' SECTION SUBTRACT 5.5mm FROM DIA. = P.C.D  
 FOR 'B' SECTION SUBTRACT 9.5mm FROM DIA. = P.C.D  
 FOR 'SPB' SECTION SUBTRACT 7mm FROM DIA. = P.C.D  
 FOR 'SPC' SECTION SUBTRACT 9.6mm FROM DIA. = P.C.D  
 FOR DEEP GROOVE OR 1/4 TWIST ADD 6.35mm TO OUTSIDE DIA.

### CUSTOM MADE CLUTCHES

TABLE REFERS TO *OUTSIDE DIAMETER* OF PULLEY GROOVES  
 BALL BEARING & GRUBS CREW MOUNTED, 40mm (1 5/8") MAXIMUM SHAFT SIZE

'B', 'SPB' SPA & A SECTION				'C' & 'SPC' SECTION			
2B	133mm	TO	178mm				
3B	133mm	TO	178mm				
4B	133mm	TO	178mm				
2B	178mm	TO	203mm	2C	178mm	TO	203mm
3B	178mm	TO	203mm	3C	178mm	TO	203mm
4B	178mm	TO	203mm	4C	178mm	TO	203mm
5B	133mm	TO	203mm	5C	178mm	TO	203mm
2B	203mm	TO	254mm	2C	203mm	TO	254mm
3B	203mm	TO	254mm	3C	203mm	TO	254mm
4B	203mm	TO	254mm	4C	203mm	TO	254mm
5B	203mm	TO	254mm	5C	203mm	TO	254mm

BALL BEARING & GRUB SCREW MOUNTED, 46mm (1 7/8") MAXIMUM SHAFT SIZE

3B	153mm	TO	178mm	3C	160mm	TO	178mm
4B	153mm	TO	178mm	4C	160mm	TO	178mm
3B	178mm	TO	203mm	3C	178mm	TO	203mm
4B	178mm	TO	203mm	4C	178mm	TO	203mm
5B	153mm	TO	203mm	5C	160mm	TO	203mm
3B	203mm	TO	254mm	3C	203mm	TO	254mm
4B	203mm	TO	254mm	4C	203mm	TO	254mm
5B	203mm	TO	254mm	5C	203mm	TO	254mm

BALL BEARING & GRUB SCREW MOUNTED, 55mm (2 1/8") MAXIMUM SHAFT SIZE

3B	172mm	TO	203mm	3C	185mm	TO	203mm
4B	172mm	TO	203mm	4C	185mm	TO	203mm
5B	172mm	TO	203mm	5C	185mm	TO	203mm
3B	203mm	TO	254mm	3C	203mm	TO	254mm
4B	203mm	TO	254mm	4C	203mm	TO	254mm
5B	203mm	TO	254mm	5C	203mm	TO	254mm
6B	203mm	TO	254mm	6C	203mm	TO	254mm

OTHER VARIATIONS E.G. INLINE, SPROCKET, BORE & PULLEY SIZES AVAILABLE  
 FOR CLUTCHES LARGER THAN 10HD PLEASE REFER TO OUR *FM RANGE*



# LEHANE CENTRIFUGAL CLUTCHES

AUSTRALIAN MANUFACTURES SUPPLYING THE WORLD

PH: (02) 9632-6549 FAX: (02) 9892-1820

## 10HD CENTRIFUGAL CLUTCH LIST

FOR 'A' SECTION SUBTRACT 6.35mm FROM DIA. = P.C.D  
 FOR 'SPA' SECTION SUBTRACT 5.5mm FROM DIA. = P.C.D  
 FOR 'B' SECTION SUBTRACT 9.5mm FROM DIA. = P.C.D  
 FOR 'SPB' SECTION SUBTRACT 7mm FROM DIA. = P.C.D  
 FOR 'SPC' SECTION SUBTRACT 9.6mm FROM DIA. = P.C.D  
 FOR DEEP GROOVE OR 1/4 TWIST ADD 6.35mm TO OUTSIDE DIA.

## CUSTOM MADE CLUTCHES

TABLE REFERS TO *OUTSIDE DIAMETER* OF PULLEY GROOVES  
 BALL BEARING & GRUBS CREW MOUNTED, 46mm (1 7/8") MAXIMUM SHAFT SIZE

'B', 'SPB' SPA & A SECTION

'C' & 'SPC' SECTION

BALL BEARING & GRUB SCREW MOUNTED, 46mm (1 7/8") MAXIMUM SHAFT SIZE

3B	153mm	TO	178mm	3C	160mm	TO	178mm
4B	153mm	TO	178mm	4C	160mm	TO	178mm
3B	178mm	TO	203mm	3C	178mm	TO	203mm
4B	178mm	TO	203mm	4C	178mm	TO	203mm
5B	153mm	TO	203mm	5C	160mm	TO	203mm
3B	203mm	TO	254mm	3C	203mm	TO	254mm
4B	203mm	TO	254mm	4C	203mm	TO	254mm
5B	203mm	TO	254mm	5C	203mm	TO	254mm

BALL BEARING & GRUB SCREW MOUNTED, 55mm (2 1/8") MAXIMUM SHAFT SIZE

3B	172mm	TO	203mm	3C	185mm	TO	203mm
4B	172mm	TO	203mm	4C	185mm	TO	203mm
5B	172mm	TO	203mm	5C	185mm	TO	203mm
3B	203mm	TO	254mm	3C	203mm	TO	254mm
4B	203mm	TO	254mm	4C	203mm	TO	254mm
5B	203mm	TO	254mm	5C	203mm	TO	254mm
6B	203mm	TO	254mm	6C	203mm	TO	254mm

ALL OTHER VARIATIONS E.G. INLINE, SPROCKET, BORE & PULLEY SIZES P.O.A.

## LEHANE (FM) FLYWHEEL MOUNTED CENTRIFUGAL CLUTCHES

LEHANE MODEL	TWIN DISC EQUIV..	HP AT 1800 RPM	HP AT 2000 RPM	IDLE RPM	PRICE
250-10"	C-110	142	206	800	
250-11 1/2"	C-110	142	206	800	
275-11 1/2"	SP-111	189	273	800	
300-11 1/2"	SP-211	337	488	800	
300-14"	SP-114	337	488	800	
400-14"	SP-214	993	1437	800	
500-16 "		1432	2072	800	
550-18"		2500	3728	800	

FM CLUTCHES SUPPLIED TO SUIT APPROPRIATE  
 "CENTAFLEX"-"SPICER"-"FENNER "P.T.O COUPLINGS  
 OTHER P.T.O'S ON APPLICATION



# LEHANE CENTRIFUGAL CLUTCHES

AUSTRALIAN MANUFACTURERS SUPPLYING THE WORLD

PH:(02) 9632-6549 FAX: (02) 9892-1820

## INLINE CENTRIFUGAL CLUTCHES

**2 PIECE****INTEGRAL BEARINGS TO  
SUIT FLEXABLE COUPLINGS  
CENTA, SPICER, TYRE COUPLINGS**

### 4HD G CLUTCH

JOB NO. 1160 BORED AND KEYED BOTH SIDES  
MAX BORES 22 mm INPUT (B2) , 22 mm OUTPUT (B1)JOB NO. 1196  
BORED AND KEYED 22mm MAX

### 5 SERIES G & 5 HD G CLUTCH

JOB NO. 3160 BORED AND KEYED BOTH SIDES  
MAX BORES 32mm INPUT (B2) , 45 mm OUTPUT (B1)JOB NO. 3307  
BORED AND KEYED 29mm MAX

### 6 SERIES G CLUTCH

JOB NO. 7123 BORED AND KEYED BOTH SIDES  
MAX BORES 36 mm INPUT (B2) , 46 mm OUTPUT (B1)JOB NO. 7148  
BORED AND KEYED 35mm MAX

### 7 SERIES G CLUTCH

JOB NO. 4244 BORED AND KEYED BOTH SIDES  
MAX BORES 46mm INPUT (B2) , 70 mm OUTPUT (B1)JOB NO. 4256  
BORED AND KEYED 40mm MAX

### 7 (HE ) SERIES G CLUTCH

JOB NO. 4244 BORED AND KEYED BOTH SIDES  
MAX BORES 46mm INPUT (B2) , 70 mm OUTPUT (B1)JOB NO.4256HE  
BORED AND KEYED 40mm MAX

### 7 HD G CLUTCH

JOB NO. 5182 BORED AND KEYED BOTH SIDES  
MAX BORES 46 mm INPUT (B2) , 75 mm OUTPUT (B1)JOB NO. 5219  
BORED AND KEYED 40mm MAX

### 7HD (HE) G CLUTCH

JOB NO. 5182HE BORED AND KEYED BOTH SIDES  
MAX BORES 46 mm INPUT (B2) , 75 mm OUTPUT (B1)JOB NO. 5219HE  
BORED AND KEYED 40mm MAX

### 9 HD G CLUTCH

JOB NO. 9049 BORED AND KEYED BOTH SIDES  
MAX BORES 51mm INPUT (B2) , 75 mm OUTPUT (B1)JOB NO. 9066  
BORED AND KEYED 55mm MAX

### 10 HD G CLUTCH

JOB NO. 10013 BORED AND KEYED BOTH SIDES  
MAX BORES 65mm INPUT (B2) , 75 mm OUTPUT (B1)JOB NO. 10028  
BORED AND KEYED 60mm MAX

COUPLINGS TO SUIT INTEGRAL BEARING CLUTCHES ARE AVAILABLE ON APPLICATION



# LEHANE CENTRIFUGAL CLUTCHES

AUSTRALIAN MANUFACTURERS SUPPLYING THE WORLD

PH: (02) 9632-6549 FAX: (02) 9892-1820

## INSTALLATION & OPERATION INSTRUCTIONS FOR (IN-LINE) MODEL CLUTCHES

We recommend that the DRIVING & DRIVEN units are both mounted on a common sturdy base plate.

The shafts of both Driving & Driven members must be mounted in such away that the alignment of maximum 0.1mm is maintained radially, axially and concentrically in Static and under Load conditions.

When installing clutch, make sure that the open end of the DRIVEN member (clutch drum) is flush with, or just short of the edge of the larger end of the DRIVE member. Make sure that no friction lining is visible.

**CAUTION: NEVER START MOTOR UP WITHOUT CLUTCH SHOES BEING COVERED BY THE DRIVEN MEMBER.**

### **OPERATING SPEED.**

Do not operate the clutch below the operating speed originally selected. As with all centrifugal clutches, it's ability to transmit power decreases rapidly as rpm declines. Operating the clutch below it's correct speed can result in slippage causing premature lining wear or at worst clutch failure.

Never idle the motor too close to the engaging speed of the clutch, as this can partially engage the clutch, again leading to excessive wear or failure of the unit.

It is acceptable to operate the clutch above normal running speed, as power rating increases rapidly with rising rpm up to a maximum of 3800 rpm. Above 3800 rpm excessive centrifugal force may cause drum to explode. In this case a steel drum should be specified.

### **DIRECTION OF OPERATION**

Lehane Centrifugal clutches will transmit the same amount of power whether operated in a clockwise or anti-clockwise direction.

# **WARNING.**

### **MACHINING PILOT BORES**

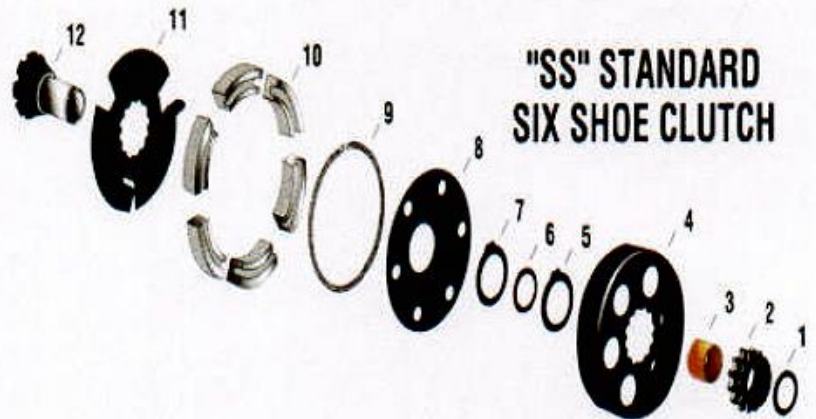
When machining the bore B2 into the driving member, always restrain the shoes by failsafe positive restraining method such as two hose clamps around the outside of the shoes and keep the maximum machining speed to 500 RPM below engagement speed.





## LEHANE CENTRIFUGAL CLUTCHES

PH:(02) 9632-6549 FAX:(02) 9892-1820



1. SHAFT SNAP RING
2. HARDENED STEEL SPROCKET
3. OIL IMPREGNATED BUSHING
4. BLACK OXIDE TREATED DRUM
5. SPROCKET RETAINING SNAP RING
6. FIBRE WASHER

7. SHOE ASSEMBLY RETAINING SNAP RING
8. SHOE RETAINER PLATE (DUST COVER)
9. STAINLESS STEEL, HEAT RESISTANT, GARTER SPRING
10. SINTERED METAL CLUTCH SHOES
11. SHOE DRIVE PLATE (CENTER PLATE)
12. HUB & SLEEVE ASSEMBLY

### SS SPARE PARTS

#### DESCRIPTION

- |          |                                   |
|----------|-----------------------------------|
| ITEM 1:  | SHAFT SNAP RING                   |
| ITEM 2:  | HARDENED STEEL SPROCKET           |
| ITEM 3:  | OIL IMPREGNATED BUSHING           |
| ITEM 4:  | BLACK OXIDE TREATED DRUM          |
| ITEM 5:  | SPROCKET RETAINING SNAP RING      |
| ITEM 6:  | FIBRE WASHER                      |
| ITEM 7:  | SHOE ASSEMBLY RETAINING SNAP RING |
| ITEM 8:  | SHOE RETAINER PLATE (DUST COVER)  |
| ITEM 9:  | STAINLESS STEEL, GARTER SPRING    |
| ITEM 10: | SINTERED METAL SHOES (SET OF 4)   |
| ITEM 11: | SHOE DRIVE PLATE (CENTRE PLATE)   |
| ITEM 12: | HUB & SLEVE ASSEMBLY              |

TO SUIT SS STYLE CLUTCH WITH 12T 35P OR 10T 41P

MANY OTHER SPROCKET SIZES AND SPARE PARTS ARE AVAILABLE .



# MAX-TORQUE RANGE

## SS AND TT RACING CLUTCHES

*#35 Pitch (3/8 ASA)*

### **DESCRIPTION**

11 tooth #35P x 3/4" Bore -2PC  
 11 tooth #35P x 5/8" Bore  
 12 tooth #35P x 5/8" or 3/4" Bore  
 13 tooth #35P x 5/8" or 3/4" Bore  
 14 tooth #35P x 5/8" or 3/4" Bore  
 15 tooth #35P x 5/8" or 3/4" Bore  
 16 tooth #35P x 5/8" or 3/4" Bore  
 18 tooth #35P x 5/8" or 3/4" Bore  
 20 tooth #35P x 5/8" or 3/4" Bore

**ALL #41 PITCH SPROCKETS ALSO FIT #40 PITCH**

10 tooth #41P x 5/8" or 3/4" Bore  
 11 tooth #41P x 5/8" or 3/4" Bore  
 12 tooth #41P x 5/8" or 3/4" Bore  
 13 tooth #41P x 5/8" or 3/4" Bore  
 14 tooth #41P x 5/8" or 3/4" Bore

*#219 Pitch*

16 tooth #219P X 5/8" or 3/4" Bore  
 17 tooth #219P X 5/8" or 3/4" Bore  
 19 tooth #219P X 5/8" or 3/4" Bore  
 20 tooth #219P X 5/8" or 3/4" Bore

### **SPECIAL CLUTCHES**

12 tooth #428P (Needle Roller) 3/4" Bore  
 16 tooth 8mm HTD pulley x 3/4" Bore

## DRAGON SKIN

### **THE ULTIMATE 4 STROKE RACING CLUTCH**

Dragon Skin (STANDARD KIT) x 3/4" Bore (13,14 & 15 tooth #35P sprockets & 4 complete Sets of Springs)

Dragon Skin (STANDARD KIT) x 3/4" Bore (16,17 & 19 tooth #219P sprockets & 4 complete Sets of Springs)

SPECIAL BLUE PRINTED CLUTCHES ARE AVAILABLE AT AN EXTRA CHARGE.

## **LEHANE CENTRIFUGAL CLUTCHES**

PH:(02) 9632-6549 FAX:(02) 9892-1820

# LEHANE CENTRIFUGAL CLUTCHES

AUSTRALIAN MANUFACTURERS SUPPLYING THE WORLD

PH: (02) 9632-6549 FAX: (02) 9892-1820

## SPARE PARTS LIST

### DRUM EXAMPLE

PRICE OF DRUM = 33% OF LIST PRICE OF COMPLETE CLUTCH

EXAMPLE :- A 4HD 127mm 1A B W x 20mm BORE = PRICE OF DRUM =

\*\*\*\*\*

### CENTRE EXAMPLE

PRICE OF CENTRE = 36% OF LIST PRICE OF COMPLETE CLUTCH

EXAMPLE :- A 5HD 133mm 2B BG x 30mm BORE = PRICE OF CENTRE

\*\*\*\*\*

### SHOES

#### TYPE

- 4 HD SERIES
- 5 SERIES
- 5 HD SERIES
- 5 HD SERIES (TO SUIT 1500 R.P.M ENG)
- 6 SERIES
- 7 SERIES
- 7 AC SERIES
- 7 HD SERIES
- 7 HD (HIGH ENGAGEMENT)
- 9 HD SERIES
- 10 HD SERIES

\*\*\*\*\*

### SPRINGS

#### TYPE

- 4 HD SERIES
- 5 SERIES
- 5 HD SERIES
- 6 SERIES
- 7 SERIES
- 7 AC SERIES
- 7 HD SERIES
- 7 HD (HE)
- 9 HD SERIES
- 10 HD SERIES

\*\*\*\*\*

### CIRCLIPS (SET OF TWO)

#### TYPE

- 4 HD SERIES
- 5 & 5 HD SERIES
- 6 SERIES
- 7 & 7HD SERIES
- 9 & 10HD SERIES

\*\*\*\*\*



# LEHANE CENTRIFUGAL CLUTCHES

AUSTRALIAN MANUFACTURERS SUPPLYING THE WORLD

PH: (02) 9632-6549 FAX: (02) 9892-1820

## SPARE PARTS LIST CONTINUED

### BEARINGS

#### SINTERED BUSHES

##### TYPE

- 4 HD SERIES SUIT UP TO 7/8" BORE
- 5 & 5HD SERIES SUIT UP TO 1 1/8" BORE

#### BALL BEARING

##### TYPE

- 4HD SERIES SUIT UP TO 20mm BORE
- 4HD SERIES SUIT UP TO 25.4mm BORE
- 5, 5HD & 6 SERIES SUIT UP TO 28.8mm BORE
- 5HD & 6 SERIES SUIT UP TO 38mm BORE
- 7 & 7HD SERIES SUIT UP TO 38mm BORE
- 6,7 & 7HD SERIES SUIT UP TO 40mm BORE
- 7 & 7HD SERIES SUIT UP TO 46mm BORE
- 9HD & 10HD SERIES SUIT UP TO 50mm BORE
- 7 & 7HD SERIES SUIT UP TO 55mm BORE
- 9 HD & 10 HD SERIES SUIT UP TO 55mm BORE

\*\*\*\*\*

### DRIVE PINS

##### TYPE

- 4 HD SERIES
- 5 & 5 HD SERIES
- 6 SERIES
- 7 SERIES
- 7 HD SERIES
- 7 XS SERIES
- 9 HD SERIES
- 10 HD SERIES

\*\*\*\*\*

# LEHANE CENTRIFUGAL CLUTCHES

(A DIVISION OF LEHANE ENTERPRISES PTY. LIMITED)

A.B.N. 82 000 253 172

TRANSMISSION ENGINEERS

57 RAILWAY STREET, YENNORA, N.S.W. 2161 AUSTRALIA

PHONE: (02) 9632 6549

FAX: 61+(2) 9892 1820

## **PRODUCT WARRANTY**

Lehane Centrifugal Clutch products are warranted against defects in material and workmanship for a period of 24 months from the date of delivery to the original purchaser.

Lehane Centrifugal Clutches will furnish, to the original purchaser an equivalent item of our manufacture for any item found to contain such a defect within this period. Shipping, removal, replacement, fitting and installation will be at the original purchasers expense.

Lehane Centrifugal Clutches may require the item to be returned prepaid to its manufacturing facility for inspection to establish a claim.

The warranty shall not apply to any product which has been subjected to accident, alteration, abuse, misuse, misapplication or improper maintenance. Lehane Centrifugal Clutches assumes no responsibility for consequential damage.

***This constitutes our entire and only warranty.***