

CALABRIA

BOARD SPORTS BOATS



2018



TEAM V

One of the best just got better. This year, Calabria Boats has added a Team Edition Pro-V to their line-up. Still boasting oversized playpen seating, storage, and the fastest filling and emptying ballast system available, the Team V is a well trimmed version of its predecessor.

First, Calabria has taken the best functioning ballast system in the Towboat market, and upsized the ballast to over 1000 lbs. Filling in just over one minute, your ballast will be full by the time you figure out who is riding next. Unlike other ballast systems, Calabria Boats uses a gravity fed system to fill the fiberglass in-floor ballast system. No pumps to burnout or clog up with debris. The advantage to the in-liner ballast system is no oversized fat sacks to take up all of your rear storage compartments. It doesn't do any good to have a boat full of friends, and having to leave your gear on the shoreline due to lack of storage.

Calabria features an oversized, wrap around seat configuration, which seats an NMMA approved 15-person capacity. Accented with custom interior accents and graphics, the Team V is sure to wrap you and several of your friends and family in style and comfort. With over 55 cubic feet of storage, having the ability to store all of your gear away, makes the Team V easy to load riders and passengers with ease.

Featuring hand laid fiberglass and all composite construction, Calabria boats are built to last. With no wood in the boat, you will enjoy your Team V for years to come. Custom in-gelcoat graphics add a custom alternative over single or two color gelcoat and covering the boat with a large decal. With schemes like the Swoosh & Checkers, Tribal, and Ellipse, you're sure to be a standout on the water. With finishing touches like an anodized billet aluminum dash, 2 Calabria Wakeboard Racks, and tower-mounted mirror, there is nothing left to be desired.

Topping off the Team V is a 2 ¼" polished stainless steel wakeboard tower. This unique tower performs better than aluminum towers, which bends and puts stress on the fiberglass where the tower is mounted. Boston Acoustics has teamed up with Calabria to feature a mind numbing, 11 speaker audio system. The system is accented with (6) 6x9 cockpit speakers, (4) polished 6 ½" tower speaker, a massive 5 channel amplifier, and a heart pounding 10" subwoofer.

Calabria doesn't stop there. With features like standard speed control, an automated dual ram wake shaping system, dual port heater, and a flip up bolster driver seat, the Team V contains everything a rider or passenger could ever need or want.

SPECIFICATIONS

- LENGTH W/PLATFORM 23' 6"
- LENGTH OF PLATFORM 30"
- BEAM 102"
- LENGTH W/TRAILER 24' 3"
- WIDTH W/TRAILER 102"
- WEIGHT 3500#
- FUEL CAPACITY 55 GALLON
- DRAFT 23"
- SEATING 15
- BOW STYLE - OPEN
- STANDARD POWER - 6.0 400HP



PRO V

SPECIFICATIONS

- LENGTH W/PLATFORM 23' 6"
- LENGTH OF PLATFORM 30"
- BEAM 102"
- LENGTH W/TRAILER 24' 3"
- WIDTH W/TRAILER 102"
- WEIGHT 3500#
- FUEL CAPACITY 55 GALLON
- DRAFT 23"
- SEATING 15
- BOW STYLE - OPEN
- STANDARD POWER - 6.0 400HP



Huge, professionally chiseled wakes that don't disintegrate when you charge at them, a boat that "turns on a dime" and plenty space for the whole crew (and their gear); not in any boat you've ever heard of, right? Wrong!

The Pro-V™ represents the epitome of engineering excellence, forethought and design. This is the world's most technologically advanced wakeboarding machine.

The standard integrated Wake System fills in under a minute and empties even faster adding 700 lbs. of water weight, NO PUMPS! The standard tower collapses in and sits below the windshield for simple, easy storage. Absolutely no bow-rise and effortless planing, no high-chairs needed.

To top it all off, the numerous highly-custom graphics options are all sprayed in mold to a minimum tolerance of 25 mils; simple gelcoat work covered by undemanding stickers is clearly unacceptable.

If true beauty, performance and functionality are what you've been dreaming of, then the serious riders need look no further!



PRO V II



Calabria introduced the Pro V-II, a wakeboarding machine that screams for attention. Not only is it one of the most spacious 20-footers around — something any rider and posse can appreciate — it also has the stylish attitude to match. The stainless-steel tower, carbon-fiber like upholstery, and new dash design catches your eye right away, and the wakeboarding-oriented performance will definitely keep your attention.

The Pro V-II's wake performance mirrors that of its older brother, the Pro V, offering rampy wakes with excellent shape. Beginners through intermediates will certainly get their fix by using the patented integrated ballast system to boost wake size, and advanced riders can go for optimal wake size just by adding more ballast.

Innovative ideas like the forward placement of the gas tank help the Pro V-II knife through the water with an efficient running attitude. With the Base 400-horsepower engine, you will be impressed by the hole shot, and this boat will hold its own through aggressive turns!

It will be easy for you to stretch your legs on this exceptionally spacious 20-footer, and the overall fit and finish of the Pro V-II makes for a comfortable, stylish, and exciting ride.

SPECIFICATIONS

- LENGTH W/PLATFORM 21' 6"
- LENGTH OF PLATFORM 30"
- BEAM 98"
- LENGTH W/TRAILER 24' 3"
- WIDTH W/TRAILER 102"
- WEIGHT 3300#
- FUEL CAPACITY 55 GALLONS
- DRAFT 23"
- SEATIN 11
- BOW STYLE - OPEN
- STANDARD POWER - 6.0 400HP





CAL-AIR

The Cal-Air is a high-end multi-purpose boat with a split personality. It produces both a great slalom wake and awesome pro-level wakes for the family also looking to wakeboarding. This boat is plush, luxurious and loaded with features, the best of which is built into the floor. The Cal-Air uses Calabria's patented integrated ballast system. With a push of a switch the release valves open and the ballast tanks immediately flood with 700 pounds of water—in about 45 seconds. It empties in a third of that time just by driving with the valves open. This means the boat goes from slalom to wakeboarding and back much quicker than any other boat on the market. Another invisible feature is that the gas tank is located forward, where other manufacturers put unusable floor storage lockers guaranteed to soak anything put in them. This assists in giving the Cal-Air incredible storage room in the rear trunk.

More visible comfort features include standard removable jump seats, a recessed driver's foot well, ergonomically designed drivers helm with fully appointed dash and a polished stainless steel tower. It's as comfortable to lounge in as is to ride behind.



Specifications

- Length w/ Platform: 21'6"
- Length of Platform: 30"
- Beam: 87"
- Length with Trailer: 24'3"
- Width with Trailer: 102"
- Weight: 3200 lbs.
- Fuel Capacity: 29 GAL
- Draft: 19"
- Seating: 10
- Bow Style: Open
- Standard Engine: MercCruiser
Black Scorpion-330 hp



EXPRESS YOURSELF

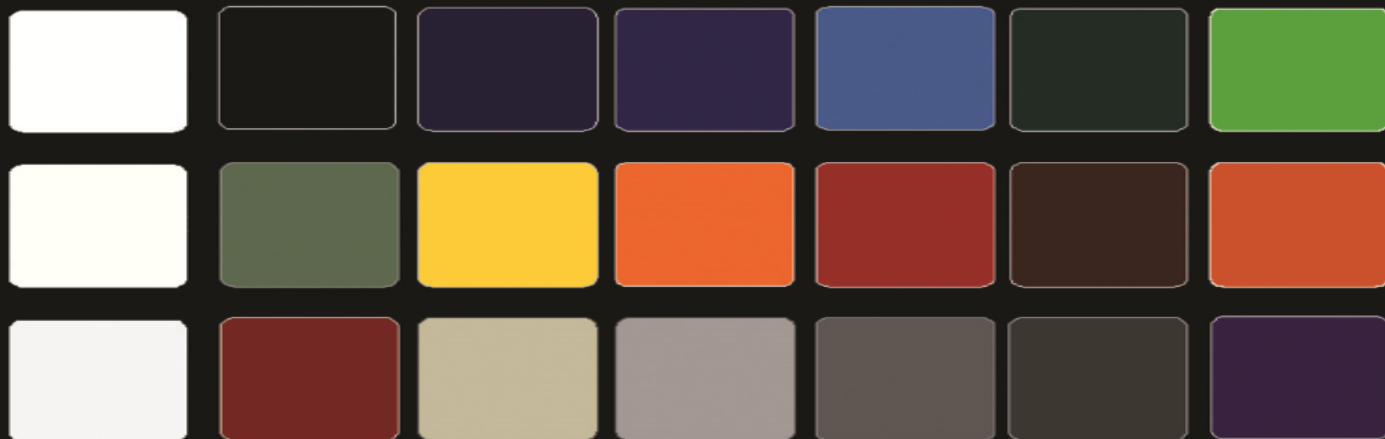
Other companies claim to be custom boat builders, but we truly are.

Choose one of our exclusive in-mold gelcoat designs or talk to us about customizing our designs to express your own individuality, something not available through other manufacturer!



TURN HEADS

Pick a color, any color. You can't go wrong. Every one is derived from a high density CCP gelcoats, designed to last a lifetime. So just choose the color that grabs your eye, because they're all guaranteed to turn heads



We also offer a wide selection of metallic and metal flake accents.

CALABRIA

BOARD SPORTS BOATS

**If you can Dream it,
We can Make it!**

**Make a personal statement, don't just be one of the crowd!
Own your dream boat...not someone else's**

Wake

Surf

Skate

Ski





Calabria Boats

450 Brown Ave
Columbus, Georgia 31906

info@calabriaboats.com

www.calabriaboats.com