

PEWTER LIVE



THE WORSHIPFUL COMPANY OF PEWTERERS



COPYRIGHT 2012
The Worshipful
Company of Pewterers



No part of this work may be reproduced, stored in a retrieval system or transmitted in any form or by any means, including copyrighting and recording, without written permission from the copyright owner, application for which should be addressed to The Worshipful Company of Pewterers – Pewter Live. Whilst every effort has been made to verify statements of fact by contributors, including the Students and professional designer entering the competition, no responsibility is accepted for errors or omissions by them.

Editor - The Clerk, Captain Paddy Watson RN

Designed and produced by -
Eleanor Mason Brown -
emc@pewterers.org.uk

Printed by Splash Printing -
www.splashprinting.co.uk

CORRESPONDENCE
The Worshipful Company of Pewterers,
Pewterers' Hall, Oat Lane, London, EC2V 7DE

CF DAY Ltd.

Property Management Experts

705 High Road, North Finchley
London, N12 0BT

Tel: 020 8492 7770

Wish The Worshipful Company
of Pewterers every success for

Pewter Live 2012

PEWTER LIVE 2012

Contents

Introduction 3

Sponsors 5

Master and Company 6

Shop at Pewter Live 10

Judges 12

The Open Competition 14

Student Competition:

Decorative Arts 23

Interior, Architectural & Furniture 29

Fashion 32

Past Winners 40

Statement of Design Rights
& Entrants Index 48

THE NATIONAL ASSOCIATION OF GOLDSMITHS

COURSE PROSPECTUS 2012

IS NOW AVAILABLE...



For courses in jewellery product knowledge and selling, valuations, management and business skills contact the NAG's Education Department
@ jet@jewellers-online.org

And keep up to date with the NAG
@ <http://nag-blog.org/>



LEIGH CARR

*Wishes the Worshipful Company of
Pewterers every success for
Pewter Live 2012*

www.leighcarr.co.uk

Working with you to achieve growth

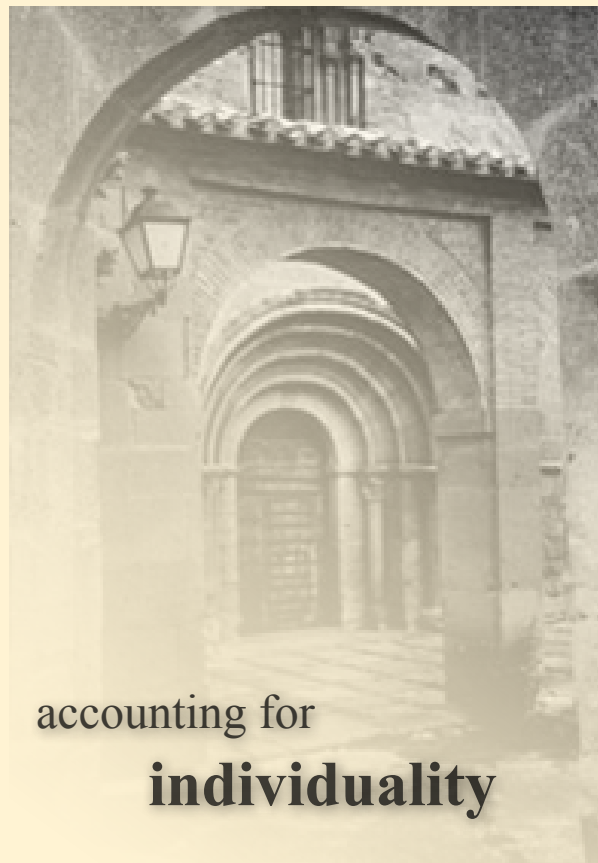
Quite simply, we are committed to helping you grow your business and improve your bottom line. At Leigh Carr we believe the way forward for a business is to identify its positive potentials and develop strategies to realise them.

Leigh Carr, 72 New Cavendish Street, London W1G 8AU

tel: 020 7580 7788

fax: 020 7580 8877

email: enquiries@leighcarr.co.uk



accounting for
individuality

PEWTER LIVE 2012

INTRODUCTION

The Worshipful Company of Pewterers has been actively involved with the pewter trade for over six hundred years. Today, one of the principal examples of this involvement is Pewter Live, which has become a noted and influential event held in the very heart of the City in the impressive surroundings of Pewterers' Hall.

Pewter Live showcases exciting and innovative work of both established and student designers. This year we are pleased to announce that The Rt Hon The Lord Mayor, Alderman David Wootton will formally open Pewter Live on Tuesday 12 June and that the designer, Emma Bridgewater, will present the prizes on Thursday 14 June. Throughout the event there is also a shop selling pewterware from several manufacturers (go to page 10 -11 for more details).

There are two competitions: the Student and the Open. The Student competition has three categories: Decorative Arts, Interior, Architectural and Furniture and Fashion - the Total Look. Over seventy students and professionals are taking part. The standard this year has been extremely high and we are delighted that more students are using pewter as a medium for design, aided by the fact that it is easy to form and with modern techniques, can be polished to a mirror finish.

The brief for the Open section of Pewter Live 2012 is to design a commercial gift/souvenir with a marketing test as an additional prize. The items are intended to be sold at the gift shop of a public attraction or monument such as The Victoria and Albert Museum, Kew Palace and the Tate Modern. We have had an impressive range of entries to the Preliminary judging. Pewter Live is a wonderful opportunity for aspiring designers to gain not only a valuable commission but a great deal of publicity.

The Judging panel, chaired by Sebastian Conran, will decide the winners On Tuesday 12 June with the announcement of winners taking place on Thursday 14 June.

Pewter Live is all about encouraging innovation in design in order to exploit pewter to its fullest potential and to produce ideas which will stretch the boundaries of this marvellous metal. We wanted the entrants to bring pewter alive; to demonstrate an understanding of its inherent qualities and contemporary appeal to consumers of all ages and tastes.

Pewter Live could not be run without the colleges and universities take part. Once again, our thanks go to the tutors and students for their support and the tremendous effort and enthusiasm that goes into the competition. The same applies to the Members of the Company and staff who organise the competition.

Buckinghamshire Chilterns University College www.bcuc.ac.uk Tutor: Andreas Fabian

South Devon College www.southdevon.ac.uk Tutor: Trish Woods

University College Falmouth www.falmouth.ac.uk Tutor: Jason Cleverly

University College for the Creative Arts at Farnham www.ucreative.ac.uk Tutor: Rebecca Skeels

Sussex Coast College Hastings www.hastings.ac.uk Tutor: Ashley Heminway

London Metropolitan University www.londonmet.ac.uk Tutor: Beaulagh Chapman Brooks

Truro College www.trurocollege.ac.uk Tutor: Martin Page

Camberwell College of Arts www.camberwell.arts.ac.uk Tutor: Karen Richmond

Central St Martins www.csm.arts.ac.uk Tutor: Michael Hurley

Carmarthen School of Creative Arts www.tsd.ac.uk Faculty of Arts



Delivering the
Future of Tin

ITRI Ltd wish the
Worshipful Company of Pewterers
every success for
Pewter Live 2012

www.itri.co.uk

RATHBONES
Established 1742

RATHBONES IS DELIGHTED TO SUPPORT PEWTER LIVE 2012

PROVIDING INVESTMENT MANAGEMENT
SERVICES FOR CHARITIES AND PRIVATE CLIENTS



For further information,
please contact

Jenna McCabe

020 7399 0195

jenna.mccabe@rathbones.com

www.rathbones.com

HERITAGE, STABILITY,
STEWARDSHIP & TRUST.



Rathbone Investment Management Limited is authorised and regulated by the Financial Services Authority.

RATHBONES
Established 1742

CADMAN
FINE WINES

LEIGH CARR

TEAMWORK
EUROPEAN SERVICES



**City &
Guilds**



HOPEMAN
ASSOCIATES Ltd.

Speechly Bircham



SPONSORS

The Worshipful Company of Pewterers would like to thank

Cadman Fine Wines - www.cadmanfinewines.co.uk

CF Day Ltd. - Property Management Consultants

City and Guilds - www.cityandguilds.com

Giftware Association - www.ga-uk.org

Hopeman Associates

ITRI Ltd. - www.itri.co.uk

Leigh Carr Chartered Accountants - www.leighcarr.co.uk

The Worshipful Company of Loriners

NAG – the National Association of Goldsmiths - www.jewellers-online.org

Alex and Patricia Neish

Procom Audio Visual Suppliers - www.procom.uk.com

Rathbones - www.rathbones.com

Life's Kitchen- www.lifeskitchen.com

Speechly Bircham - www.speechlys.com

Splash Printing - www.splashprinting.co.uk

Teamwork European Services - www.teamworkexhibitions.co.uk

Utility Funding - www.utilityfunding.ocm

Wildshaw Ltd.

PEWTER LIVE 2012

MASTER &

It is a privilege to welcome you to Pewter Live, the nation's premier pewter design competition and exhibition.

Pewter has long been a part of our history. Phoenicians traded for Cornish tin more than 2000 years ago and pewter articles were made in Roman Britain. Use of pewter peaked in the 17th century when, from birth to death, people were surrounded by pewter; items for eating and drinking; bleeding bowls, bedpans, and snuffboxes. Taverns used mugs and measures. Churches used flagons, chalices, patens and baptismal bowls. This pre-eminence ended with the introduction of porcelain and pottery during the 18th century. Even so, pewter continued to be used for decorative purposes. Artists and craftsmen during the Arts and Crafts Period and the Art Nouveau Period used pewter and achieved superb results.

For centuries pewter has had an enduring appeal. Today, it is valued by designers and craftsmen alike for its beauty and versatility. We are delighted to be able to show you some of their work.



Richard Boggis-Rolfe
Master of the Worshipful Company of Pewterers



COMPANY



The Pewterers' Company is an ancient and continually evolving foundation with medieval origins as a City Guild. The earliest documented reference to it is in the records of the Corporation dated 1348. The Company's own records date from 1451. It is ranked sixteenth in the order of civic precedence among over a hundred Livery Companies.

The first charter, granted by King Edward IV in 1473, empowered the Company to regulate the trade throughout the kingdom, unlike the powers granted to the majority of other companies, whose jurisdiction was limited to the City and its environs. It could seize and destroy pewter below a certain standard, and also impose fines and other penalties on its members for failing to uphold the Craft. From 1503, an Act of Parliament required Members of the Company to register their 'Touchmarks', which were 'to be recorded on Tablets of Pewter' and kept at the Hall of the Company. The use of a Maker's Touchmark served not only to safeguard the Craftsman, but also to enable the public to have confidence in the quality of the product.



Today, the Company has an active and diverse membership, drawn from a wide range of backgrounds. The Company's principal activities are the support of the pewter trade in this country, the management of its charities, supporting the government of the City of London and the Armed Forces of the Crown and maintaining a lively and enjoyable corporate social life, meeting regularly in Pewterers' Hall.

The first Hall, completed in 1496, was destroyed in the Great Fire. The second Hall, on the same site in Lime Street, which is still owned by the Company, was demolished in 1932. The present Hall was opened in 1961.



EVENTS - Celebrate! THE CITY 21-24 June

www.visitthecity.co.uk/culture2012

Activities Day 23 June 10-5pm

As part of **Celebrate the City** - a 4 day special events programme in the Square Mile - entry to the exhibition is free for all, with Livery-inspired activities for children and adults.

Late View: Tricks & Trades 29 June -10pm

An evening of music and entertainment exploring weird and wonderful crafts and trades. Hosted by the friends of the Guildhall Art Gallery. FREE Event. Exhibition charge applies.

Curator's Talks 11 July, 5 September 12:30-1:15pm

Join Curator Sonia Solicari for a tour of the exhibition. FREE with entry to exhibition.

For more information on events please visit:
www.guildhallartgallery.cityoflondon.gov.uk

Specialist advice from a team you can talk to...

Speechly Bircham

Ranked in the top seven practices in the world for private client services, our team acts for UK and international individuals, families, trustees, private banks, trust companies and family offices on matters relating to private wealth.

Recognised for taking a joined up approach, the team advises clients on all aspects of wealth protection, tax and succession planning charities and philanthropy, family law, property and related corporate issues.

...lawyers of choice for individuals and corporates.

For more information, please contact
John Ward - Head of Private Client
Tel: +44 (0)20 7427 6643 john.ward@speechlys.com
or visit our website at www.speechlys.com/private_client



A E Williams
Truely British Pewter

6 Well Lane, Digbeth, Birmingham B5 5TE
Tel: +44 (0) 121 643 4756 Fax: +44 (0) 121 643 2977
Email: info@pewtergiftware.com Web: www.pewtergiftware.com

SHOP @

There will be an impressive range of contemporary pewter for sale at Pewter Live 2012.

FLEUR GRENIER
design@fleurgrenier.co.uk
www.fleurgrenier.co.uk



AE WILLIAMS
info@pewtergiftware.com
www.pewtergiftware.com



MARIA SANTOS
www.mariasantosalcantara.co.uk



KEITH TYSSSEN
keithtyssen.co.uk
keith@keithtyssen.co.uk



GLOVER AND SMITH
sales@gloverandsmith.com
www.gloverandsmith.com



ROMA VINCENT
studio@romavincent.co.uk
www.romavincent.co.uk



GILL CLEMENT
shop@gillclement.com
www.gillclement.com



PARTNERS IN PEWTER
www.partnersinpewter.co.uk



SHARON DICKINSON
sharondickinson@worldonline.co.uk



GORDON W ROBERTSON
Info@gordonwrobertson.com
www.gordonwrobertson.com



STEVE CORLESS



ELLA MCINTOSH DESIGN
mail@ellamcintoshdesign.com
www.ellamcintoshdesign.com





The Worshipful Company of Pewterers is delighted to welcome Emma Bridgewater as guest of honour and presenter of prizes for Pewter Live 2012.

Emma Bridgewater grew up in Oxford, oldest daughter in a large family; and her mother Charlotte created a memorably welcoming kitchen from which Emma draws constant inspiration. One wall of the room was taken up with a large dresser which gave a complete portrait of family life – Victorian meat plates and French café porcelain jostling christening mugs, piles of mismatched plates, and Bovril mugs stuffed with felt tip pens, library cards and screw-drivers. Meanwhile Emma's father started, grew and eventually sold his publishing business; giving Emma an insight into an entrepreneurial career.

Emma graduated from London University with a degree in English literature; her first (and only) job was 18 months spent working for knitwear designers Muir & Osborne. In 1985, inspired by what she had learned about running a small business, Emma decided to set up her own whilst shopping one day for a present for her mother. She realised that there was a great big gap in the market where cosy pottery for kitchen living ought to be. So she drew some shapes and some patterns and set out

to find a maker in the Potteries. The designs were quickly snapped up by up by Liberty's, Harrods and The General Trading Co and within a few months her spongeware was being hand made in a small back street factory in Stoke-on-Trent.

Emma and Matthew met in 1987 when they were both selling their products at London trade fair Top Drawer, and married shortly afterwards. Emma Bridgewater Ltd bought the business that had been manufacturing Emma's range of mugs, bowls and plates, but they soon outgrew the works and moved to a sprawling Victorian factory covering 3 acres, where they work today. They are very proud of the fact that all their pottery is made by hand in a factory in Staffordshire. They have bucked the trend of the decline in the potteries in Stoke-on-Trent, and their factory on the banks of the Caldon Canal employs around 200 people in their shops, café and studio alongside the factory and warehouse. In 2010 they celebrated their 25th birthday.

Emma is a champion of British manufacturing and of the city of Stoke on Trent. She was proud to receive an honorary doctorate from the University of Staffordshire in 2011. She is also a trustee of the National Garden Scheme and Chairman of the English Heritage Foundation.

Emma and Matthew live in North Oxford, and they have a home in Norfolk where they spend most of the holidays with their children. Her early family life - which inspired the Emma Bridgewater business - took place round the kitchen table, and that is still the focus of Emma and Matthew's life with their four children today.

Chairman of Judges



Sebastian Conran has design in the blood. He is passionate about designing thoughtful, stylish products that are satisfying to use. By understanding how things are made and how they are used, he creates lasting, innovative designs that have received a plethora of design awards and patents in various fields.

From stacking shelves at Habitat in his teens, to running his design Studio, Sebastian's life has been focused on understanding how things are made & sold. He has seen many thousands of successful & enduring products through from concept to consumer, whether for John Lewis or Virgin Atlantic, Nigella or Nissan, to numerous industry-leading clients across the globe.

As Principal Designer, Sebastian takes a hands-on, down-to-earth approach to every project. He is intimately involved in all design aspects during the innovation journey, sharing his wealth of experience and manufacturing expertise with the design team, however big or small the project.

Sebastian has taught furniture design at the RCA; lectures frequently to students and professionals; judges many international design awards [including: Audi, D&AD, Dyson, Red Dot, RSA.]; and has written and illustrated many books, articles and papers on design.



Mark Bond is currently Head of Design for Home & Furniture at Tesco. Graduating from the RCA in 1994, Mark established his own design consultancy working with high profile companies such as Hermes fashion house, the Design Museum, the Barbican Centre, the Design Council, the British Council, WGSN and Habitat UK. Mark has curated exhibitions, co-authored books, lectured internationally, trend forecasted, and judged design competitions.

Mark has also worked with the Home Retail Group, Marks & Spencer, ran the design team at Conran & Partners and designed for SCA. He has travelled extensively and collaborated with manufacturers globally, developing designs in most product areas.



Sue Bonham graduated with Distinction at the London College of Fashion in 1981 and her graduation collection was purchased by Harrods. In the 1980s Sue worked with Simon Napier-Bell making clothes for his bands such as Wham! and Japan as well as with Terence Donovan styling for some of his photo shoots. Following this, She was also a part time lecturer at the London College of Fashion as well as showing both at London Fashion Week and Paris Fashion Week under her own label. Since the late 1990s Sue has been a couture designer for both women and men with her own shows in London's West End. She has an expanding list of high profile clients, including HRH the Countess of Wessex, designing and making stylish outfits for all occasions.



Marc Meltonville - Food Historian, Historic Royal Palaces, England. Marc trained in Ceramic history, form and construction. After college he went to work in the media, firstly in advertising and then the writing of children's books. To date he has over twenty books in print.

Never losing his love of history he also worked as a volunteer at the Chiltern Open Air Museum and later worked for his County as a Museum Education Officer. Marc was first commissioned to work for Hampton Court in 1991 for the reconstruction of the Tudor kitchens and then for the first attempt at using that space for experimental work. In 2003 Marc took over the project co-ordination of the Historic Kitchens of Hampton Court Palace. For the last two years Marc has been working on the reconstruction of the Royal Kitchens at Kew. This set of historic kitchens, unseen for 200 years, opened to the public in May. His work at the Royal Palaces has seen him lecture all over England, America and Canada, along with countless TV and Radio appearances.



Nick Munro started his career in 1987 by turning bedsprings into egg cups – an instant hit which won him the accolade of UK Young Entrepreneur of the Year. Soon afterwards he invested all the money he'd made from this initial venture into his first collection of pewter, including teapots, cafetieres and pepper mills, manufactured by A R Wentworth in Sheffield.

More recently, Nick has gone on to work with companies all over the world including Royal Selangor Malaysia and his portfolio ranges from tea pots to wristwatches, crystal to porcelain. He opened his first independent shop last year and is presently expanding his own brand into China, Korea and Japan. But it all started with Sheffield made pewter (albeit by way of a bedspring or two!).

OPEN COMPETITION

Pewter Live's mission is to encourage innovation in design in order to exploit pewter to its fullest potential and produce ideas that will stretch the boundaries of this marvellous material. The object is to bring British pewter alive; to demonstrate an understanding of its inherent qualities and its appeal and relevance to contemporary consumers of all ages and tastes.

Open Category Brief 2012 – Design a pewter memento or souvenir

This years brief is to select a suitable enduring public attraction, or chain of attractions, a country house, museum etc. and design a pewter memento or souvenir that could be purchased in the attendant gift shop. The design had to be inspired by the selected attraction and the object could celebrate the Queen's Diamond Jubilee.

Attractive packaging is an important addition to any souvenir and the entrants were asked to produce prototype packaging for their entry which could be made of any conventional material, board, wood, pewter or a combination of materials. The Pewter Live Sub-Committee wanted to inspire designers to think of the complete product and we hope that the inclusion of packaging design will add a new element to the brief. In addition to this entrants were encouraged to attempt to sell their submission to their preferred attraction, or attractions. The competitor that has offered evidence, to the Worshipful Company of Pewterers of achieving the most sales or confirmed orders by value, before 9.30 a.m. on Monday 11 June 2012, will receive a prize of £500; the prize will be divided in the event of a draw.

There are two divisions to the competition items have been entered with a retail price of £20 - £100 or £100 - £250, in both cases the packaging to be approximately 10% of the whole price.

PRIZES:

£750 awarded for the category of

Retail category:
£20-£100

£1,000 awarded for the category of

Retail category:
£100-£250

An additional £500 to be awarded to the entrant with proof of sales



Retail category:
£100-£250



Retail category:
£20-£100



Gordon W Robertson -
Info@gordonwrobertson.com
www.gordonwrobertson.com

A SELECTION OF PEWTER CHARGERS, PLATES & JEWELLERY

My chosen public attraction is the Royal Botanic Gardens at Kew, London.

I have produced a range of etched press-formed pewter chargers, plates and a raised bowl along with a range of jewellery using images derived from pen and ink studies made at the gardens.



Richard Priestley & Deborah Smith -
escafelddesigns@gmail.com

STREETS IN THE SKY BROOCH

This brooch takes its inspiration from Europe's largest listed building, the Le Corbusier influenced 'Park Hill'; which dominates Sheffield's skyline and holds a place in the hearts of all Sheffielders'. The 'Streets in the Sky' brooch was created using a photo etching process. It is centrifugally cast and patinated. Laser cut acrylic inlay adds colour and contrast.

Dimensions: 86mm x 41mm x 2mm
Cast pewter with acrylic inlay.

Retail category:
£20-£100

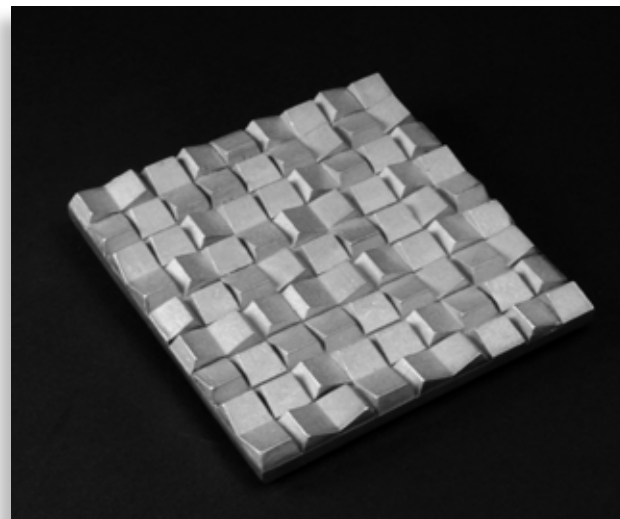
Richard Priestley & Deborah Smith -
escafelddesigns@gmail.com

Q BROOCH

This striking brooch is as contemporary as the building which inspired it, Sheffield's RIBA award winning Q Park. Its clean geometric structure was created with CAD and the master built by rapid prototyping. This piece will be produced using centrifugal casting for commercial viability.

Dimensions: 62mm x 62mm x 5mm
Bead blasted, cast pewter.

Retail category:
£20-£100



Freeman College
Student Project
c/o Carole Baugh
Freeman College
Sterling Works
88 Arundel Street
Sheffield S1 2NG
(t): 0114 252 5972
gallery@fmc.rmt.org

JESSOPS CHRISTMAS DECORATION

Freeman College educates young adults with autistic spectrum conditions. Freeman College students produced a collaborative design for cast pewter Christmas decorations based on Jessop's logo as a gift for babies on the High Dependency Unit of Jessop Wing, Sheffield Teaching Hospitals. The decoration was manufactured by students in Freeman College.

Retail category:
£20-£100



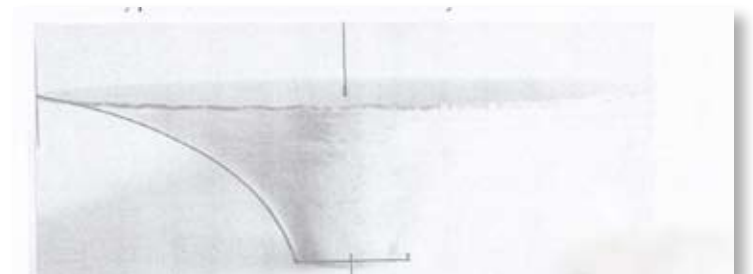
Melanie Guy -
melguy@onetel.com

PEWTER BOWL COMMEMORATIVE OF THE QUEENS DIAMOND JUBILEE 1952-2012

Bowl spun from 1.5mm pewter sheet. Fluted form, flat base - 8" diameter, 2" high. High-end gift. Hand processed decoration, 18ct gold leaf. Symbols derived from 'Star of Africa'/ Cullinan diamond & mount; Ampulla; Orb; St. Edward's Crown - cross, fleur de lis, golden globe.

(adjacent image prior to decoration)

Retail category:
£100-£250





Design Clan (Robert McEwan) -
designclanuk@gmail.com

BIRDIE JUG AND NEED CANDLESTICK COMBO

Both designs were inspired by the challenging Pewter Live 2012 brief. They are snapshot flirty, precious products of contemporary pewterware to be sold as momentos. The candlesticks are made from castings and the jugs are made from spinnings. They are both are strong and light weight in design.

Retail category:
£100-£250



Sarah Vedel Hurtigkarl -
www.sarahhurtigkarl.com

HANDCUTLERY

The hand axe is the earliest evidence of a tool. Could it have been a tool used for eating? A two-sided knife? The Handcutlery is transforming and mirroring the past into the present. The past and present tools are stitched to each other by solder wire.

Retail category:
£100-£250



Simon Taylor -
simon@taylormaker.com

SALT AND PEPPER PILLOWS

Salt and Pepper Pillows – Salt and Pepper shakers. To be sold in the gift shop of the Geffrye Museum. Inflating the metal under pressure like a balloon, giving the shakers the appearance of soft cushions. I'm inspired by the soft furnishings from the English domestic interior throughout the ages displayed at the Geffrye.

Both designs could celebrate the Queen's Diamond Jubilee with a simple engraving.

Retail category:
£100-£250





Sandra Litchfield -
lichbeaconpoint@aol.com

SALTRAM FLORA

Traditionally formed vessels, with flame formed edge, depicting hand engraved images of flora found specifically in the landscaped gardens at Saltram House. Simplicity allows for the design to be shaped mechanically, and etched by computer. Then hand finished edge gives a unique finish to the piece.

Retail category:
£20-£100



Sue Rawley -
www.suerawley.co.uk

REGAL OAK LEAF FRAME

Inspiration for the design came from the dinner services used by Queen Victoria at her Coronation banquet, the only other Monarch to reign for 60 years. The oak leaves strength, roses for England, fleur-de-lis from a banner of England in 1399 & the Prince of Wales. The Thistle is for Scotland and the Shamrock for Ireland. The Dragonfly & Butterfly from some early designs on china dated 1750 from Clarence House and the Crown for the Queen.

One large Swarovski AB stone is used centrally at the top of the frame, for the Diamond Jubilee. The Frame packaging will be a blue velvet bag with Pewter disc attached to the pull string.

Retail category:
£100-£250



Fleur Grenier -
design@fleurgrenier.co.uk

WILLIAM MORRIS COASTERS

Design - Based on the William Morris 'Poppy' wallpaper at Standen House.

Product - Set of 4 coasters, visitors to Standen want to buy a souvenir that is from and has an association with the house. Packaging - Each set is sold in a wooden box. Production - Cast & polished

Retail category:
£20-£100





Jessica Neil -
Jessica@quarterangel.com

LONDON SKYLINE CUFF

Living in one of the higher parts of north London I frequently catch glimpses of London's breath-taking skyline. This cuff design celebrates the great number of beautiful buildings right on my doorstep.

The textured design is easily applied to the pewter, creating a striking contrast with the highly polished background.

Retail category:
£20-£100



DECORATIVE ARTS

The students were asked to design a pewter item for the gift market. The design could be either functional, fun or merely decorative. We wanted them to look at the current market, bearing in mind retailers such as John Lewis or Heal's.

The judges are seeking originality and beauty but also innovation. Students were asked to consider what people need/want at the moment and to think about lifestyle trends. More and more people are entertaining at home: a wine chiller, a table centre piece, a modern take on the traditional vase, etc.

They also had to consider the visual benefits derived from the integration and use of colour to complement and enhance the pewter, using additional materials as appropriate. The final item had to be made predominantly of pewter. We also asked that consideration should be given to the possibility and practicality of large-scale production.

PRIZES: First £350, Second £250 and Third £100

Pranav Sarin -
pranavsarin@hotmail.com
Camberwell College of Arts
Three Dimensional Design

MEASURING PEWTER

Rooted in forming processes, this series of measuring spoons is the outcome of allowing a predetermined volume to dictate the making process. They were created in contrast to 17th century porringers that were quite diverse in their function. They were used as eating utensils, wine tasters, and as a common cooking measure reference, owing purely to their abundance in the late 1600s. This pattern of ambiguity, recurrent in most other vessels, drove me to create a utensil with an intended volume and function. The spoons have been domed and soldered on to handles that were then patinated. Measure details were achieved through sandblasting.





Sarah Jane King -
keaki.king@yahoo.com
Truro College
FdA Silversmithing & Jewellery

MINIATURE PINE VASE (SET OF THREE)

Inspiration has been drawn from the 1938 woodblock print 'Pine Tree in the Rain' by Shiro Kasamatsu. The strong will of the pine represents strength through adversity, as expressed through my design development. Pewter's qualities balance well with the design and my aim for the piece(s) are a gentle sign of happiness amidst chaos, ideally arranged as a set of three or as a table centrepiece in restaurants or the home.



Lewis Williams -
le.williams@me.com
Camberwell College of Arts
Three Dimensional Design

PEWTER ON THE ROCKS

Inspired by how pewter reacts once it is poured into ice when it was in its molten state. The Pewter didn't know how to react, melting some of the ice and letting it set around the shape of the mold. I find that this piece catches the pewter in its molten in the process of casting the piece that gives it a natural and spontaneous outcome. As a designer I am only able to suggest, not govern the design.



Robert Dennis -
Robert.dennis@hotmail.co.uk
Sussex Coast College Hastings
Foundation Degree Contemporary Crafts Practice

WOOD CARVING WITH BOWL

This piece is inspired by the natural patterns of William Morris designs. The wood is carved, leaving recesses to pour molten pewter and the bowl nestles on the top. The piece is designed to bring the feel of nature inside.



Constantin Luncasu -
viadco89@yahoo.com
Buckinghamshire Chilterns University College
Silversmithing Metalwork and Jewellery

EQUILIBRIUM

For my project I was inspired by balance. All around us we see that everything needs to be in balance; nature, life and universe itself. My inspiration came from the balance of a seesaw or the twist of a spinning top. They have to be in a perfect balance to work so my vase it is an example of that.



Zahira Younis
zahira.younis@live.co.uk
Buckinghamshire Chilterns University College
Silversmithing, Metalwork and Jewellery

RETRO VASE

I love the 60s architecture and this clever geometric design speaks of this era. In designing and making this vase, I found it a playful and puzzling experience I feel it would work well in many settings, including the home but also as a decorative piece, say within the work environment.



Joy Shui Danyu -
l.j.shui1@arts.ac.uk
Camberwell College of Arts
Three Dimensional Design

BROKEN JIGSAW

The broken jigsaws are inspired by antique porcelain repair. They are decorations. As the materials of them are developed in two different cultures and areas of the world, the mixing of pewter and ceramics/ porcelain to show that the world is becoming more and more international. It reminds people not to forget the histories and cultures of their countries when they enjoy the modern and international life.

Anna Gillett -
anna.gillett.maker@gmail.com
Sussex Coast College Hastings
Foundation Degree Contemporary Crafts Practice

'LOOPY LOU' Contemporary Vase made from Forged Pewter and glass test tubes.

My love of nature has inspired me to create this contemporary piece to display flowers, constructed from forged pewter and test tubes in a simple modern form. This piece could be adapted to create a larger form with more test tubes to suit more stems.



Angeline Bates -
angie.bates@rocketmail.com
South Devon College
FdA Three-Dimensional Design

YING AND YANG His and her trinkets bowls

A piece of nature for the dressing table. Each bowl intertwines and creates individual containers for his and her trinkets such as a ring and cufflinks. The bowls are made from raised pewter and porcelain embellished with holly leaves that protect and nestle in a figure of eight wooden tray.



Katie Owen -
ktlo90@hotmail.co.uk
Carmarthen School of Creative Arts
BA (HONS) Ceramics & Jewellery

CENTREPIECE

For a dining table including salt and pepper dishes, spoon and candleholders which all sit on a burnt oak base.

The design and detail of this condiment set was inspired by the material quality of pewter in its molten form and the barnacled textures found on shipwrecks and other archaeological finds along the West Wales coast. The set is made up of a series of dishes that also includes a cast spoon, candleholders and burnt oak base.



Sally Hunt -
South Devon College
FdA Three Dimensional Design

SET OF CERAMIC AND PEWTER PLACEMATS AND COASTERS.

Decorative set of ceramic and pewter placemats and coasters that explore contrast between materials - the high polish of the pewter against the subtly crazed surface of ceramic glaze. Hard wearing and readily cleaned, they offer a splash of decadence to any table.





Gil Müller -
gilmueller@gmx.ch
Camberwell College of Arts
Three Dimensional Design

BALANCING PEWTER-BIRD

The Pewter-Bird is a vessel that balances on the corners of tables, mugs, shelves or other objects in the interior landscape. Filled with sweets or biscuits, it balances on the rim of an afternoon tea tray. On a shelf the vessel may display small jewellery or other objects. I am interested how associations such as balancing, lightweight and movement are perceived when being put alongside pewter, a material with a strong history. Recognising the flexibility, movement and soft malleable qualities of pewter, the bird suggests a contemporary interpretation.

Lesley Harvey Howard -
howard.hunt@hotmail.co.uk
South Devon College
FdA Three Dimensional Design

THREE PIECE SUSHI SET AND CHOPSTICKS.

Inspired by Japanese food and Wabi Sabi aesthetic, the sushi set comprises one large platter, a small wasabi paste holder, a pair of chopsticks and their rest. The colours and patterns of nature provide a focal point that offers an enduring decorative object when not in use.



Abigail Ashmore -
abi.ashmore@hotmail.co.uk
Truro College
FdA Silversmithing & Jewellery

DINING ROOM TABLE PINCH POTS FOR SALT AND PEPPER

The inspiration for my salt and pepper pots comes from the "Bawden rocks" that can be seen off the coast of St Agnes. The pots will be etched with patterns that I think best represent the contents and the inspiration. The pots would be made using the fly press process initially and then potentially made using the lost wax process. The target market is home owners of any age who would appreciate a little bit of Cornwall on their table. This would be sold as a gift item at a retail price of £20-£30. It could also be finished off with a wooden base, which would increase the price.



INTERIOR, ARCHITECTURAL & FURNITURE

Pewter offers students tremendous potential to design contemporary interior fixtures and fittings - from handles and hooks, shelves and brackets, to light fittings, lamp bases, and bathroom accessories. Today's homes adopt a variety of 'looks' - minimalist urban loft-living, country-style utility, revivalist or traditional - and most successful businesses have a corporate look which inspires confidence through its professionalism. Pewter fixtures and fittings can enhance them all.

The students were asked to design a one-off item or a range of pieces which show originality and take into account today's trends in interior design.

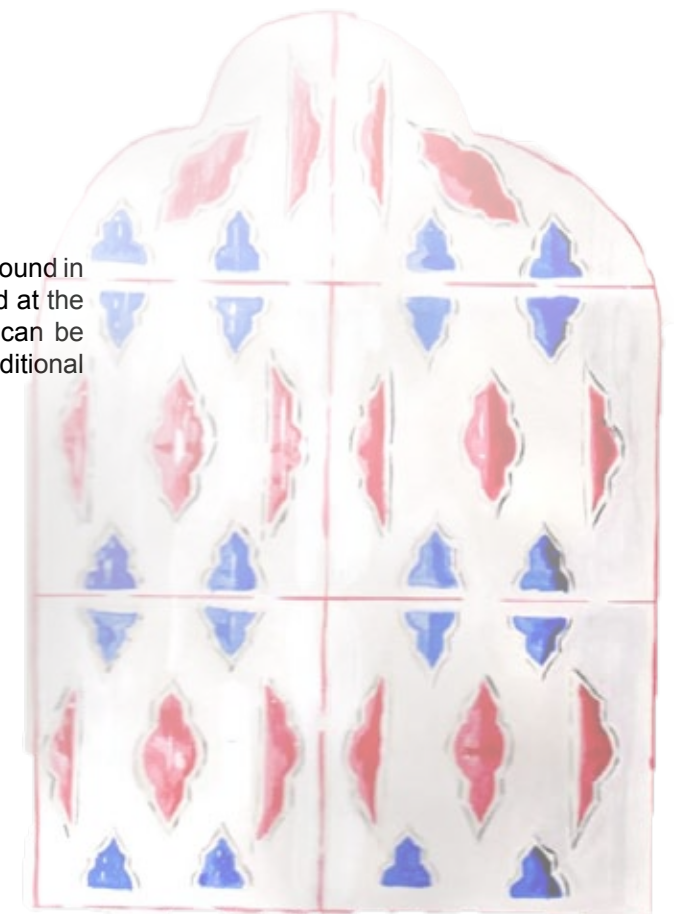
PRIZES: First £350, Second £250 and Third £100

Sebastian Conran has offered an additional prize of one week's work experience with Conran for the winner of the Interior Product category.

Jane Cross -
j_cross34@hotmail.com
London Metropolitan University
Foundation Degree Silversmithing and Jewellery

MOORISH TILE SPLASHBACK

Inspiration for the tile splashback was taken from Moorish motifs found in Moorish decoration, in particular motifs found in North Africa and at the Alhambra. The splashback is formed from individual tiles and can be altered in size. It would fit into both a contemporary or traditional bathroom providing decoration and utility.





Ian Inglis -
 iain@eyeeye.demon.co.uk
 Buckinghamshire Chilterns University College
 Silversmithing, Metalwork and Jewellery

DAWN RUSH

The base is made of four flats of polished copper soldered together, with the flares made from four polished pewter sides soldered together, which slots on to the top of the base. It is inspired by one of my childhood play areas of reeds and bulrushes and long spiky leaves.



Nicolas Lalande -
 nlalande.k@gmail.com
 Camberwell College of Arts
 Three-Dimensional Design

“TÊTE-À-TÊTE”

“Tête-à-tête” is an individual ashtray made of pewter and silicone. It has a classical shape and a surprising constitution. The confrontation of two materials from two distinct periods of time, and with different texture and properties, brings a captivating tactile experience, inflaming the user's curiosity. Also contributing thanks to its non-skid property, the use of silicone eliminates unwanted surface movement and retains cigarettes. Fitting together, the ashtrays could be sold as a pair. This enables the user to avoid diversification of multiple replicas of different designs, which can cause an inharmonious environment. Available in several colours.



Stacey Read -
 stacey18anne@btinternet.com
 University College for the Creative Arts at Farnham
 Three Dimensional Design- Glass

‘OPENING SEED POD’ SCULPTURAL LIGHT

Inspired by the forms and textures of seed pods opening, this sculptural table light is made up of a hand blown spherical glass form encased with pewter leaves created using Foldforming, the use of coloured glass fit over the glass form which creates a surreal pattern of colour around the room when lit up.

Katy-Jane Middleditch -
 katy_blu.x@hotmail.co.uk
 South Devon College
 FdA Three-Dimensional Design

MUSSEL SHELL CLUSTER CURTAIN TIE BACK

A cluster of mussels gently cling to the tie back cord reminiscent of their natural habitat. The curtain tie brings nature and the sea into the home and allows the sunlight from the window to dapple onto the pewter surface and reflect light into the room.



Elly Flaherty -
 rocketgirl50@rocketmail.com
 Sussex Coast College Hastings
 Foundation Degree Contemporary Crafts Practice

LEAF LIGHT

Inspired by my local Sussex woodlands and the reflective qualities of the pewter, I have designed and made a table lamp. The flowing form is based on the sweet chestnut leaf, and the light pattern resembles the dappled light of the woodland.

FASHION - FROM JEWELLERY TO THE TOTAL LOOK

Today's high street is awash with jewellery and accessories, few of which are made of pewter. We challenged the students to come up with designs which could promote pewter either as an accessory or part of the total look. Taking this into account, they were asked to design a piece, or range of jewellery, which would appeal to young people to compliment today's free-form fashion. Similarly to the Decorative Arts category Students were encouraged to keep the commercial price relative to the intended buyer.

PRIZES: First £350, Second £250 and Third £100



Jessica Noble -
Jessnoble@rocketmail.com
London Metropolitan University
FDA Jewellery & Silversmithing Design

'ENTROPIC' Multi Function Fashion Accessory

Designed to be fun and versatile, complementing today's fast moving fashion market, 'Entropic' reminds the wearer of the fun, light-hearted side to fashion. The versatility encourages the wearer to celebrate and embrace freeform fashion, adding a little random unpredictability to their day to day fashion. Where or how will it be worn today?...

Lynette Sundby -
mail@thesundbys.eclipse.co.uk
Sussex Coast College Hastings
Foundation Degree Contemporary Crafts Practice

SUNSHINE COAST. A series of three pendants in varying sizes using pewter and felt.

The pieces are inspired by the sea and the beach on the south coast of England and convey the juxtaposition between the soft and hard elements of nature in the use of pewter and felt combined.



Tracy Hills -
tracyhills@hotmail.com
University College for the Creative Arts at Farnham
BA (Hons) 3D Design in Metal work and Jewellery

"FOXWOOD" 3D Layered Pendant

An interactive 3D forest scene created with several etched layers of trees with a fox, a bird and a moonstone. Hints of gold leaf depict reflections from the moon.

Each layer can be flipped over the bail to change the scene by placing the fox and the trees in the foreground, middle or background.

Katie Owen -
ktlo90@hotmail.co.uk
Carmarthen School of Creative Arts
BA (HONS) Ceramics & Jewellery

'LIFELINES'

Wrap around neckpiece consisting of multiple pewter forms on a length of fine black wire mesh.

This neckpiece draws inspiration from wreckage along the West Wales coast, particularly from the changing function of the vessel from working boat to rich habitat below the water line. Embracing the nature of pewter in its fluid state, the dip-cast forms, combined in multiples and interwoven with fine wire mesh give the appearance of enveloping the wearer's neck.



Sally Hunt -
South Devon College
FdA Three Dimensional Design

CERAMIC AND PEWTER NECK PIECE

A ceramic and pewter neck piece inspired by the retro style of the 60s, and bold material contrast. A large pewter and ceramic disk sits on a diagonal bar of polished pewter, that hangs around the neck from a string of faux pearls.





Angeline Bates -
angie.bates@rocketmail.com
South Devon College
FdA Three-Dimensional Design

GOLDEN ROSE LAPEL PINS

The pins are designed to be worn one on each lapel of a jacket. Each rose is cast and tinted and blossoms from a stainless steel pin.

Hettie Dengates -
hettie@dengates.co.uk
Sussex Coast College Hastings
Foundation Degree Contemporary Crafts Practice

JACK PLUG NECKLACE

The collection of necklace and key ring is inspired by music. Most of us love to listen and many like to play. These pieces reflect this by taking the utilitarian, jack plug, and turning it in to a valued piece of jewellery. They are adaptable and cross boundaries in music and gender.



Matilda Sandys-Renton -
matildasandysrenton@gmail.com
Camberwell College of Arts
Three Dimensional Design

THREE NECKLACE

Twenty years ago my grandfather saved a piece of box-wood from being burnt and destroyed. He kept it, waiting for an opportunity to use it and recently he gave it to me. The narrative of the wood drove me to preserve it by giving it a contemporary context. The shape of the necklace is defined by three points, which mirror the three elements: wood, burning and pewter.



Philippa Haines -
philippa.haines@btinternet.com
Sussex Coast College Hastings
Foundation Degree Contemporary
Crafts Practise

USB POD

My current preoccupation is with the sea and what it casts upon our shores, in particular the eggs of skates commonly known as mermaid's purses. I am constantly challenged by changes in technology and wished to embrace and envelope a functional item within a desirable, and tactile container. I have created a collection of felt lined etched pewter pod neckpieces in which to house your USB mass storage devices. The pods are designed to be brought into the home and "docked" into a hanging felt mermaids purse.

Carina de Jager -
carinadejager@hotmail.co.uk
London Metropolitan University
Silversmithing & Jewellery Foundation
Degree

FAN RINGS

This is a set of three unique rings inspired by the patterns formed from open fans. They are made from layers of brightly coloured acrylic sandwiched between laser cut pewter. They could be made in any combination of colours and could be made in large, medium and small sizes.



Hazel Selby -
Hazeljaybee@hotmail.com
South Devon College
3D Design - Contemporary Crafts

GROUP OF 3 DECORATIVE HATPINS

The hatpins are designed to enhance and decorate a special occasion hat. Each pin is derived from natural forms – the lightness of a feather; the swirl of raindrops in the sunset and a bird's silhouette. Each pin is secured with a stainless steel stem.





Emily Goodaker -
emilygoodaker@hotmail.co.uk
University College Falmouth
Contemporary Crafts

AN EXPLORATION OF SCALES

Captivated by repetition, I have mimicked the overlapping pattern of fish scales using pewter and textile cord. The grooves around the side of the pewter frame allow the necklace to slide. This rotates the frame into a new position allowing the scales to overlap, creating two alternative ways of wearing it.



Krista Thompson -
Krista.thomson@ntlworld.com
University College for the Creative Arts at Farnham
BA (Hons) 3D Design in Metal work and Jewellery

ROMANESCO COLLECTION

The Romanesco cauliflower in my veg box inspired me with its architectural structure. When cross sectioned one gets a wonderful mixture of rough and smooth surfaces that still retain the 'whorls' but also produce contrast with 'shine' when cast in pewter. Adding resin to the mix creates funky, fun jewellery.



Charlotte Darvel -
CDarvell@students.ac.uk
University College for the Creative Arts at Farnham
BA (Hons) Degree in three Dimensional Design in Ceramic

A PENDENT WITH BEADS

My piece was inspired by the Nazca lines that lead me to look at animals and maps. I treat the animals' images as maps which I then combined with the maps lines.

The objects are made from ceramics and pewter, the pewter has been poured into the ceramics markings.



Paul Pennington -
paulpennington@hotmail.de
Truro College
FdA Silversmithing & Jewellery

INTERCHANGEABLE SHAPES

A range of Jewellery made from geometric cast components put together by threading onto nylon coated steel wire, including silver findings and various gemstones made into bracelets and earrings. They are very commercial as no soldering is involved. The idea is to offer these designs in three different finishes (hammered, polished and brushed), two different clasps (toggle and lobster) and ten different gemstones such as Lapis lazuli, amethyst, turquoise, garnet, fluorite, pearls, rose quartz, onyx and Carnelian. For the earrings there are studs or ear wires to choose from. The ones I entered with are squares with pearls and rings with fluorite.

Elizabeth Davitt -
miz-liz@live.co.uk
University College for the Creative Arts at Farnham
BA (Hons) 3D Design in Metal work and Jewellery

FLORAL NECKPIECE

I have designed this neckpiece as a one off, show stopping piece of jewellery. The outcome combines floral organic shapes with a fantasy twist of enamel colours, finished off with a leaf/petal like texture. It's weighty, but certainly not uncomfortably so and would look exceptional with that evening dress!



Jasmine Bowden -
jb123264@falmouth.ac.uk
University College Falmouth
Contemporary Crafts

A WORLD WITHOUT BEES- My entry is a wearable sculptural neckpiece.

Albert Einstein famously said: "If the bee disappeared off the surface of the globe, then man would only have four years of life left" My piece aims to highlight and raise awareness of the plight of the Honey bee. Made up of multiples of hand pierced pewter bee wings, my piece attempts to push the boundaries of pewter by playing with repetition and scale.





Katy-Jane Middleditch -
katy_blu.x@hotmail.co.uk
South Devon College
FdA Three-Dimensional Design

MUSSEL SHELL CLUSTER NECKLACE

Inspired by the sea and Devon rock pools, a cluster of mussel shells gently swing from fine silver threads to form the neck piece. The shells are individually handmade but could be mass produced and reflect the colours of natural shells with subtle patination.

William Hayter -
whayter91@gmail.com
Camberwell College of Arts
Three Dimensional Design

'TAILORED'

Tailored takes inspiration from the traditional tailors' and dressmakers' patterns. My piece Tailored is based around the use of dressmakers and tailors fabric patterns. I have taken a traditional pattern and turned it into a piece of jewelry to adorn the piece of the body that it was intended to fit around. I was interested in the technical drawings and diagrams used in pewtersmithing and immediately I was amazed at how similar these drawings were to patterns dressmakers and tailors.



Esther Fidlin -
esther_fid@hotmail.co.uk
University College for the Creative Arts at Farnham
BA (Hons) 3D Design in Metal work and Jewellery

MANKIND'S EARTH

This necklace shows the life of mankind on planet Earth. It portrays the different stages of mankind's influence on the planet both positive and negative; it also signifies the battle of control mankind has against nature. There is a message embedded within this necklace that will make people think differently about mankind's existence in the world.



Matilda Sandys-Renton -
matildasandysrenton@gmail.com
Camberwell College of Arts
Three Dimensional Design

CREDIT CARD RING

Inspired by the use of recycled objects and playing with the values of money, I created this ring cast from a reconstructed credit card. The texture reflects the use of recycling, still showing a hint of the credit card chip in the top of the ring. I cast the ring in a silicone mould that I took from the original plastic ring.

Emma Darnell -
emmadarnell@hotmail.co.uk
South Devon College
FdA Three-Dimensional Design

BUTTERFLY CORSAGE

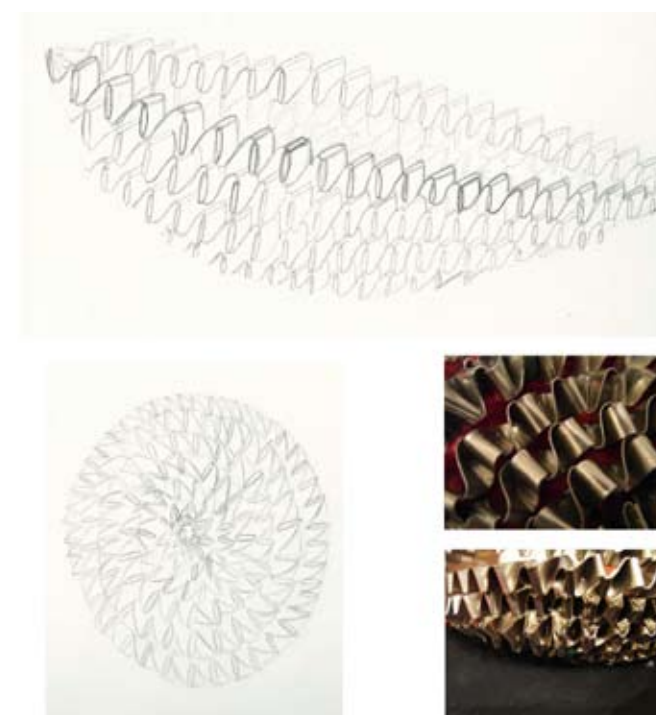
Tinted pewter butterflies resting on a polished pewter branch inspired by the light and colour of butterfly wings and the trembling effect when they flutter. The butterflies are stamped from sheet then etched to mimic the wing patterns and finally tinted with subtle colours.



Hee Kyoung Lee -
ghgh0621@hotmail.com
Camberwell College of Arts
Three Dimensional Design

IN AND OUT

The style of daily objects had been changing with time. The woven basket was created a long time ago and it is still widely used today. I was inspired by the woven basket which is one of the oldest known processes. Unlike many other objects, different textures can also be expressed through various basket weaving techniques. It is sure to be suitable wherever the user may display it. This pewter basket can be used in different ways in different places.



Pewter Live 2011

Pewter Live 2011- Last year's winners and highlights

There was a wonderfully diverse range of entries in Pewter Live 2011. Over 70 students and professionals entered the Student and Open categories respectively.



From left: Sebastian Conran, 2nd prize winner - Sam Williams, 1st prize winner- Alfred Pain, Commended - Shannon O'Neil, Guest of honour - David Nicholls, and Past Master Professor John Donaldson.



David Nicholls, Professor Donaldson and Alfred Pain hold up Alfred's winning design; a chandelier which (overleaf) which was presented to the Royal Scots Dragoon Guards.

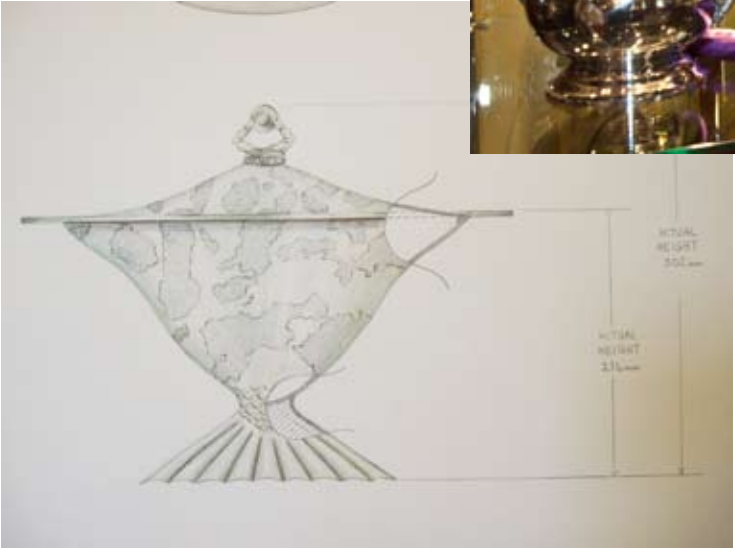
Last year's winners



Above: The chandelier by Alfred Pain which is now installed at the Royal Scots Dragoon Guards Barracks in Germany.



Above: Sam Williams with his flagon, charger and tots which came second place. The tots have, since the competition, gone on to be produced and are on sale from A E Williams.



Left: The design for a punch bowl by Shannon O'Neil - which was commended by the judges.

OPEN COMPETITION

First Prize
Second Prize £1,000
Commended

Alfred Pain - Chandelier for presentation to the Scots Dragoon Guards
Sam Williams Scots Dragoon - Guards Flagon and Bowl
Shannon O'Neil - Punch Bowl

Pewter Live 2011



INTERIOR, ARCHITECTURAL & FURNITURE (clockwise from top left):

First £500 Sanni Falkenberg, UCA at Rochester for Alpine Succulent Art
 Second £300 Melina Xenaki, Farnham for Chessboard Table
 Third £150 Tyra-Jane Ward, UCA at Rochester for The Magnetic Key Keeper
 Commended Anna Pearson, London Metropolitan University for LED Wall Lights



DECORATIVE ARTS (clockwise from top left) :

First £350 Richard Gamester, UCA at Rochester for 'Suomalaiset Kaatimet Pourers'
 Joint Second Prize £175 Rory Thompson, Manchester Metropolitan University for 'Matryoshka bowl'
 Joint Second Prize £175 Joseph Begley, Camberwell College of Arts for 'Tilt'
 Commended Kari Furre, South Devon College for 'Pewter Salt'

Last year's winners



FASHION – FROM JEWELLERY TO THE TOTAL LOOK (clockwise from top left):

First Prize £350 Rachel Bletcher, South Devon College for 'Porcelain & Pewter Fuchsia Necklace & Earrings'
 Second Prize £250 Hannah Batstone, University College Falmouth for 'Out Flew The Cuckoo' Pendants
 Third Prize £100 Victoria Freeman, UCA at Rochester for 'Seductive Secrets' – An Intricate Masquerade Mask
 Commended Marie de Boissezon, Camberwell College of Arts for 'Let Pewter Be'



GIFTWARE ASSOCIATION PRIZE (clockwise from top left):

Winner - Bryony Gill, Truro College for 'Organic Bobble Bracelet'
 Highly Commended - Marie de Boissezon, Camberwell College of Arts for 'More than a mirror, this is Pewter'

NEISH PRIZE: Presented by Alex & Patricia Neish £500
 Melanie Guy for her Open competition entry: Table Centre Piece

CITY & GUILDS PRIZE: Rachel Bletcher, South Devon College for 'Porcelain and pewter desk tidy'

Your Guide to British Pewter

What is Pewter?

Pewter is mainly Tin alloyed with other metals added to allow the material to be worked and formed. The Tin content will vary but is generally higher than 91.5%. Pewter was introduced to Britain by the Romans and has been used to produce objects both useful and desirable ever since. Today's British pewter industry is a dynamic and traditional one combining fine design and ancient skills to produce objects to be treasured and enjoyed.

How do I know its British Pewter

Only British pewter is allowed to carry the marks illustrated below, these are found stamped into each piece individually or as part of a collection of marks known as the "touchmark".

The symbols to look out for are:



The ABPC mark, which stands for the Association of British Pewter Craftsmen whose members, must make their objects to quality standards of craftsmanship and alloy composition.



The Seahorse mark is only allowed for use by ABPC members on their finest wares, the emblem comes from the coat of arms of the Worshipful Company of Pewterers in the City of London who have been permitted to police the industry since receiving a royal charter in 1474.



The EPU mark of the European Pewter Union, the composition of pewter conforms to BS EN611 parts 1 and 2 and the number in the centre is registered to a particular factory or firm, all UK numbers begin with a 3.

Association of British Pewter Craftsmen
Unit 10, 1st Floor, Edmund Road, Sheffield, S2 4ED.
Telephone: 0114 2527550

What a difference The Giftware Association makes

Award winning trade association that helps your business needs at every level. Ask us how we can help you.



Exhibitor discount at major trade fairs inc. spring and autumn fair



Reduced credit / debit card processing rates - online and offline



Copywatch design protection service



Free legal advice



Networking and development



Source for advice and information

and much more..

A GA member shares his experience

"The association has been there for me when faced with serious copyright issues, it's boosted my marketing and sales through its Gift of the Year Awards and it saves me time and money by leveraging the power of group buying on credit card services, shipping costs, insurance and other services. It does all this and saves me even more money on exhibiting at the top two UK trade shows each year to boot. With all these amazing benefits, why wouldn't you join?"
Jeremy Corner (Proprietor) Blue Eyed Sun Ltd

YouTube



Follow us on Twitter

SAVE MONEY, MAKE MONEY, SAVE TIME

Federation House, 10 Vyse Street
Birmingham B18 6LT
Contact the team directly:
0121 237 1104 or email help@ga-uk.org



WWW.GA-UK.ORG



The Company is pleased to offer for hire parts of its imposing Hall in the City of London for special occasions. Few venues in the capital can rival a Livery Hall for prestige, splendour and an atmosphere of heritage.

Ideally situated in the heart of the City and with its flexible suite of air conditioned rooms, Pewterers' Hall is a wonderful backdrop for meetings, conferences and presentations. The Hall has a brand new state of the art Audio Visual suite with 8ft x 6ft display screen together with a Data Projector which has the facility for both long & Short Throw Projection and can be front or rear projected according to your presentation style. With the capability of multiple PC/Laptop data sources we have the flexibility to present almost anywhere in the room. We will be pleased to help organise whatever support services you require to ensure your event runs smoothly.

PEWTERERS' HALL

Conference & Banqueting



The Worshipful Company of Pewterers
Pewterers' Hall, Oat Lane, London, EC2V 7DE
020 7397 8192 beadle@pewterers.org.uk

www.pewterers.org.uk

LIFE'S KITCHEN

A LOVE OF FOOD &
A SENSE OF OCCASION

You have an event to deliver and you need a partner to help you do so. A partner that will listen to your brief, to your likes and dislikes and to truly take the time to understand what is important to you and your guests.

We are delighted that Pewterers' Hall is part of the family of Livery Halls within the Life's Kitchen Portfolio. Life's Kitchen produce a variety of events in all our venues from small breakfast meetings, summer receptions to elaborate gala dinners.

LIFE'S KITCHEN LTD
0800 915 0978
INFO@LIFESKITCHEN.COM
WWW.LIFESKITCHEN.COM

STATEMENT OF DESIGN RIGHTS

The works shown in the exhibition and in this catalogue are required by the Worshipful Company of Pewterers to be original works, but the Company does not make any warranty in this regard.

Unregistered Rights. All the works shown in this catalogue and exhibited at Pewter Live 2012 at Pewterers' Hall, London EC2V 7DE on 12th-14th June 2012 may be protected automatically by Unregistered Design Right for 10 years in the UK as provided by the Copyright, Designs and Patents Act 1988 and for 3 years in Europe as provided by EC Council Regulation No. 6/2002 on Community Designs, subject to fulfilment of the requirements for qualification for UK Design Right protection and/or EU Unregistered Design protection. Unregistered Design rights protect only against copying by a third party.

Registered Rights. EC Council Regulation No. 6/2002 also provides that an application for EU Registered Design may be submitted for any of these designs so exhibited that fulfil the requirements for EU Registered Design protection within 12 months of the date of first exhibition of the design, as long as the exhibition was the first disclosure of the design otherwise than in confidence. The application would receive the filing date of the actual date of submission of the application but the exhibition disclosure will not be taken into account for the purpose of assessing qualification for Registered Design protection. Registered Design protection is also available in the UK only.

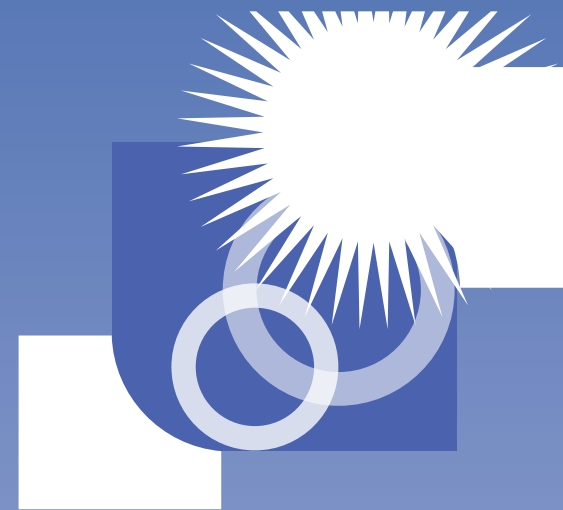
Further Details. Advice regarding asserting Unregistered Design Rights and the procedure involved in applying for the Registered Design Rights can be obtained at no charge by the authors of the designs (or with their written permission) by application to The Clerk, The Worshipful Company of Pewterers, Pewterers Hall, Oat Lane, London EC2V 7DE by post or email to clerk@pewterers.org.uk. These details are kindly provided by Kilburn & Strode, 20 Red Lion Street, London WC1R 4PJ.

Copyright A Rurhmann

INDEX OF ENTRANTS

Ashmore, Abigail - DEC. ARTS 28
 Bates, Angeline - DEC. ARTS 27
 Bates, Angeline - FASHION 34
 Bowden, Jasmine - FASHION 37
 Cross, Jane - ARCHITECTURAL 29
 Danyu, Joy Shui - DEC. ARTS 26
 Darnell, Emma - FASHION 39
 Darvel, Charlotte - FASHION 36
 Davitt, Elizabeth - FASHION 37
 de Jager, Carina - FASHION 35
 Dengates, Hettie - FASHION 34
 Dennis, Robert - DEC. ARTS 25
 Fidlin, Esther - FASHION 38
 Flaherty, Elly - ARCHITECTURAL 31
 Freeman College - OPEN 17
 Gillett, Anna - DEC. ARTS 26
 Goodaker, Emily - FASHION 36
 Grenier, Fleur - OPEN 21
 Guy, Melanie - OPEN 17
 Harvey Howard, Lesley - DEC. ARTS 28
 Hayter, William - FASHION 38
 Hills, Tracy - FASHION 33
 Hunt, Sally - DEC. ARTS 27
 Hunt, Sally - FASHION 33
 Inglis, Ian - ARCHITECTURAL 30
 King, Sarah Jane - DEC. ARTS 24
 Kyoung Lee, Hee - FASHION 39

Lalande, Nicolas - ARCHITECTURAL 30
 Litchfield, Sandra - OPEN 20
 Luncasu, Constantin - DEC. ARTS 25
 McEwan, Robert - OPEN 18
 Middleditch, Katy-Jane - ARCHITECTURAL 31
 Middleditch, Katy-Jane - FASHION 38
 Mueller, Gil - DEC. ARTS 28
 Haines, Philippa - FASHION 35
 Neil, Jessica - OPEN 22
 Noble, Jessica - FASHION 32
 Owen, Katie - DEC. ARTS 27
 Owen, Katie - FASHION 33
 Pennington, Paul - FASHION 37
 Priestley, Richard - OPEN 6
 Rawley, Sue - OPEN 21
 Read, Stacey - ARCHITECTURAL 31
 Robertson, Gordon W - OPEN 15
 Sandys-Renton, Matilda - FASHION 34 & 39
 Sarin, Pranav - DEC. ARTS 23
 Selby, Hazel - FASHION 35
 Smith, Deborah - OPEN 6
 Sundby, Lynette - FASHION 32
 Taylor, Simon - OPEN 19
 Thompson, Krista - FASHION 36
 Vedel Hurtigkarl, Sarah - OPEN 19
 Williams, Lewis - DEC. ARTS 24
 Younis, Zahira - DEC. ARTS 25



utility funding

Utility Funding is pleased to support
 Pewter Live 2012
 Congratulations and good luck to all participants

Utility Funding
 enables smart metering of electricity and gas
 supplies to monitor and control energy consumption
 and to reduce carbon dioxide emissions

www.utilityfunding.com

Utility Funding Limited
 Brewery House
 34 -44 Gigant Street
 Salisbury, Wiltshire
 SP1 2AP



The Worshipful Company of Pewterers
Pewterers' Hall, Oat Lane, London, EC2V 7DE

£5.00

Telephone 020 7397 8190 emc@pewterers.org.uk www.pewterers.org.uk