

PEWTER LIVE

Celebrating 30 years of innovation in design

2018

THE WORSHIPFUL COMPANY OF PEWTERERS



COPYRIGHT 2018
THE WORSHIPFUL COMPANY OF PEWTERERS

No part of this work may be reproduced, stored in a retrieval system or transmitted in any form or by any means, including copyrighting and recording, without written permission from the copyright owner, application for which should be addressed to The Worshipful Company of Pewterers – Pewter Live. Whilst every effort has been made to verify statements of fact by contributors, including the Students and professional designer entering the competition, no responsibility is accepted for errors or omissions by them.

Editor - The Clerk, Captain Paddy Watson RN

Designed and produced by -
The Assistant Clerk, Eleanor Mason Brown

Printed by Splash Printing -
www.splashprinting.co.uk

CORRESPONDENCE

The Worshipful Company of Pewterers,
Pewterers' Hall, Oat Lane, London, EC2V 7DE
info@pewterers.org.uk
www.pewterers.org.uk

CF DAY Ltd.

Property Management Experts

705 High Road, North Finchley
London, N12 0BT

Tel: 020 8492 7770

Wish the Worshipful Company
of Pewterers every success for

Pewter Live 2018

LEIGH CARR

*Wishes the Worshipful Company of
Pewterers every success for
Pewter Live 2018*

www.leighcarr.co.uk

Working with you to achieve growth

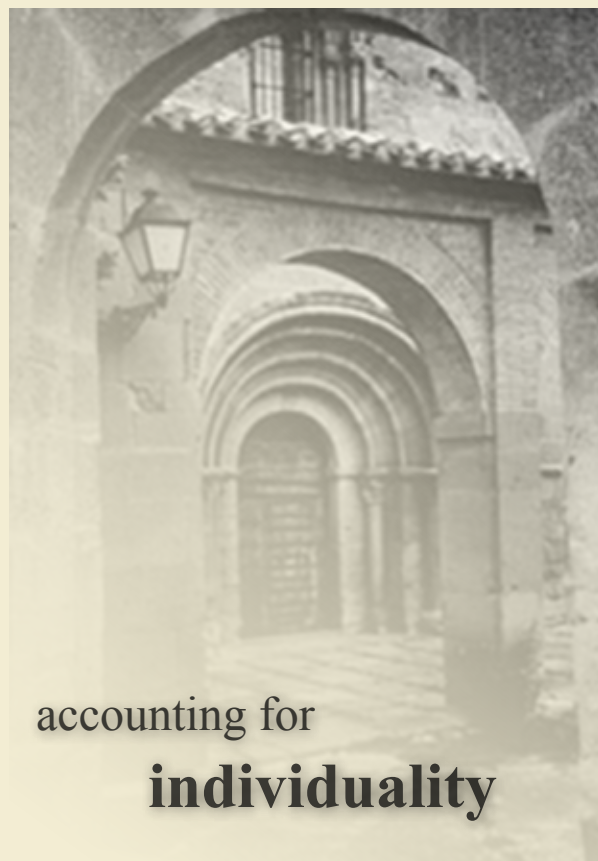
Quite simply, we are committed to helping you grow your business and improve your bottom line. At Leigh Carr we believe the way forward for a business is to identify its positive potentials and develop strategies to realise them.

Leigh Carr, 12 Helmet Row, London, EC1V 3QJ

tel: 020 7566 3900

fax: 020 7566 0002

email: enquiries@leighcarr.co.uk



accounting for
individuality

PEWTER LIVE

2018

CONTENTS

Introduction 2

Sponsors 5

The Company 7

Welcome from the Master 9

Shop at Pewter Live 10

Judges 12

Independent Awards 16

The Open Competition 17

Student Competition:

Open Student 29

Decorative Arts 32

Jewellery 37

The Queen Elizabeth Scholarship Trust 44

Christ's Hospital School 45

Last Year's Winners 46

Statement of Design Rights
and Entrants Index 52

INTRODUCTION

The Worshipful Company of Pewterers has been actively involved with the pewter trade for over six hundred years. Historically the Company, once its first charter was granted by King Edward IV in 1473/4, became not only self governing but was able to regulate the trade throughout the kingdom.

The Company was concerned with trade matters, costs, prices, raw materials, quality of pewterware and training of apprentices, as well as relief for the poor within the trade, funeral expenses, general charity and civic duties. The Company continues to support charities and the City (go to page 7 for more information on the Company). Our support of the trade as evolved over the years with the Company assisting individuals, and indeed other Livery Companies, who are looking for pewter items. Other initiatives include promoting the sale of pewter by major brands and department stores. Beyond the City, retailers Harvey Nichols, Fortnum and Mason and John Lewis (to name but a few) all stock pewter products. Much of this activity is a result of the promotion and scope of Pewter Live which has become a noted and influential event held in the very heart of the City in the impressive surroundings of Pewterers' Hall.

Although the Company had organised several exhibitions of antique and modern pewter it was not until 1988 that the name 'Pewter Live' was used and the exhibition included a competition open to professional designers and students.

Over the last
30 years

has become synonymous with exciting and innovative work in pewter and quality commercial pewter products. The student competition attracts students nationwide and this year we have seven universities and colleges taking part. The student brief has three categories: Decorative Arts, Open (Student Category) and Jewellery. The standard this year has been extremely high and we are delighted that more students are using pewter as a medium for design.



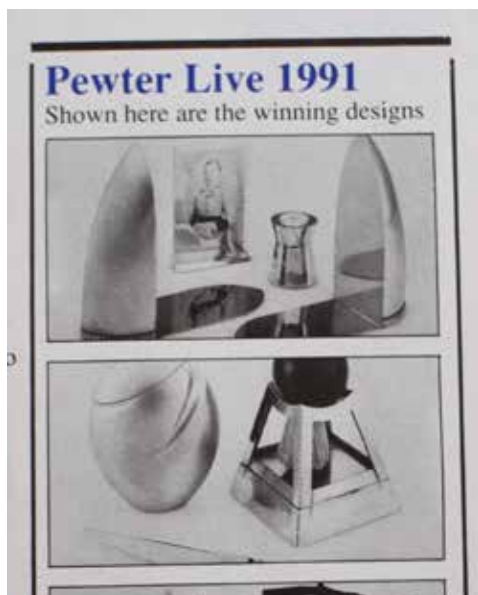
Above: Bill Pertwee presenting a prize to Annicka Rutlin in 1992. Below article on the First Pewter Live 1988.

In homage to the 30th anniversary of the competition the Pewter Live sub-committee, chaired by Laila Zollinger, devised a brief for the Open competition which set the challenge of producing an item, or range of items, that evoke a celebration, be it a wedding, christening, winning a competition or gaining a degree.

The judges are looking for a new slant on traditional items. The brief asked entrants to produce items which would be attractive to well known retailers such as John Lewis and Selfridges. With this in mind, it was important for the designers to not only produce items which would stand out but would be adaptable to large scale production.

Pewter Live is all about encouraging innovation in design in order to exploit pewter to its fullest potential and to produce ideas which will stretch the boundaries of this marvellous metal.





Above left: A cutting from 1991. Right HRH Prince Charles at Pewter Live when he was guest of honour in 1993.

We wanted the entrants to bring pewter alive; to demonstrate an understanding of its inherent qualities and its contemporary appeal to consumers of all ages and tastes. During the event professional designers will be selling their pewterware and showcasing new designs (go to page 10-11 for more details).

This year we are pleased to announce that the Right Hon. The Lord Mayor of London, Alderman Charles Bowman will formally open Pewter Live on Tuesday

22 May. HRH Princess Alexandra, the Hon Lady Ogilvy KG GCVO will present the Prizes on Thursday 24 May.

Pewter Live could not be run without the participation of the colleges and universities. Once again, our thanks go to the tutors and students for their support and the tremendous effort and enthusiasm that goes into the competition. The same applies to the members of the Company and staff who organise the competition.

Buckinghamshire New University www.bucks.ac.uk Tutor: Lyndon Buck

Cardiff School of Art & Design, Cardiff Metropolitan University
www.cardiffmet.ac.uk Tutor: Philippa Lawrence

University for the Creative Arts, Farnham www.uca.ac.uk Tutor: Rebecca Skeels

De Montfort University www.dmu.ac.uk Tutor: Imogen Aust

London College of Fashion www.arts.ac.uk/fashion Tutor: Husam El Odeh

Truro College www.truro-penwith.ac.uk Tutor: Rebecca Walklett

University Centre Hastings www.sussexcoast.ac.uk Tutor: Ashley Heminway



We're proud to make money to make a difference

The City & Guilds Group's purpose is to help people and organisations to develop their skills for growth.

We do this by helping people into a job, progress on the job and then move onto the next job.

We reinvest the money our businesses make into further development of high-quality products and services as well as charitable investments that support global skills development.

Bursaries

Our bursary programme supports people to study for a City & Guilds or ILM qualification, who would otherwise not be able to afford it.

- 72 learners supported in 2017/18
- 70% of those awarded in 2015 are now financially independent post-qualification

Princess Royal Training Awards

An annual programme to recognise UK employers who have successfully linked their skills development needs to improved business performance. The Awards have attracted a diverse range of employers from small businesses to multi-nationals.

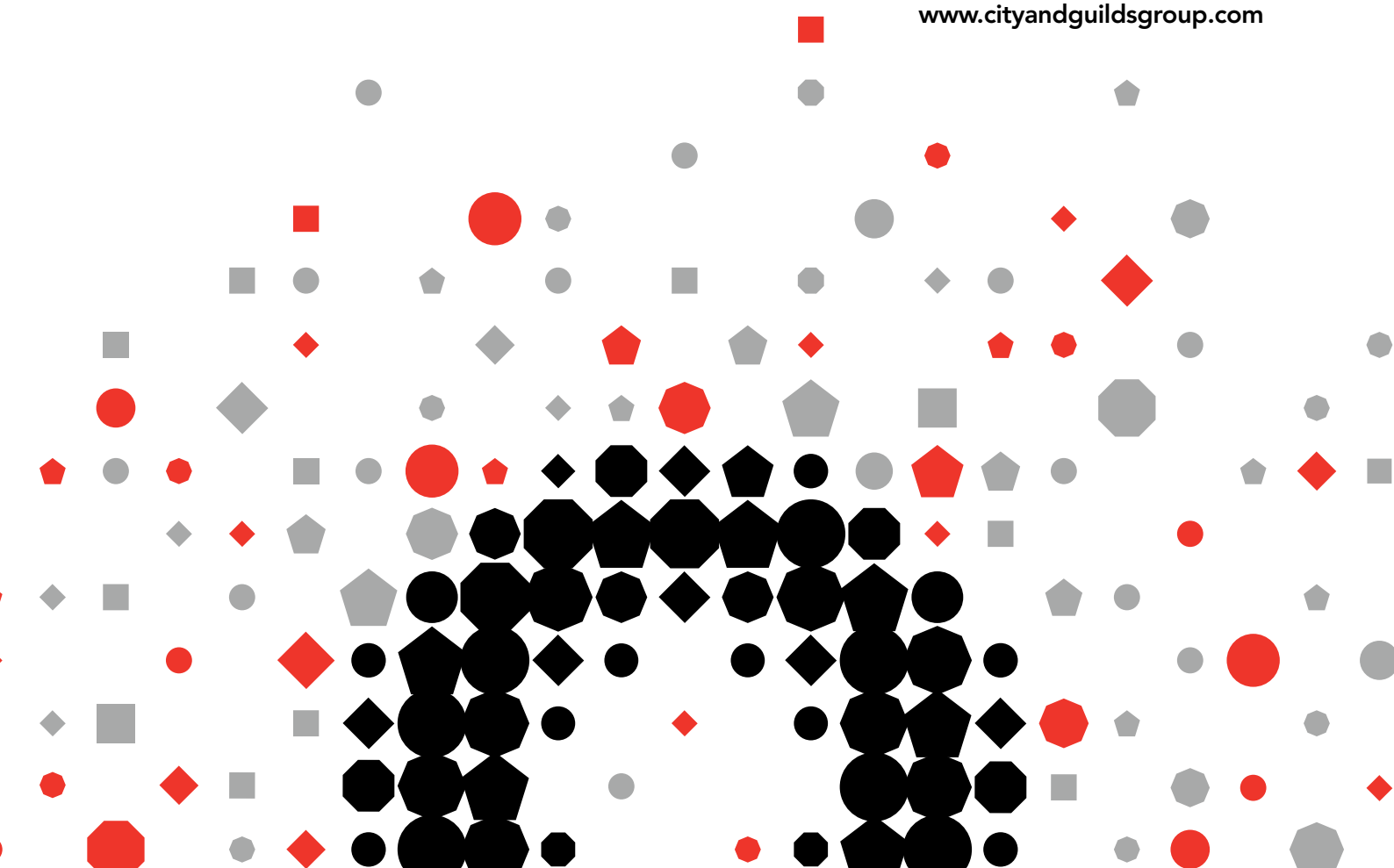
- 73 organisations have achieved the standard in the first two years

Youth Engagement

Our programmes aim to introduce young people to the world of work through offering work placements, paid internships and connecting apprentices with young people.

- We've reached more than 45,000 young people so far through Apprentice Connect

www.cityandguildsgroup.com



Rathbones
Look forward

LEIGH CARR

City & Guilds Group



DSMETALS



LIFE'S
KITCHEN
A LOVE OF FOOD &
A SENSE OF OCCASION



SPONSORS

The Worshipful Company of Pewterers would like to thank

A&E Audio Visual - www.aeav.co.uk

Amalgamated Metal Trading Ltd - www.amt.co.uk

City & Guilds - www.cityandguilds.com

Ellis of Richmond Wine - www.ellisofrichmond.co.uk

D S Metals Ltd - www.dsmetals.com

Hopeman Associates

The International Tin Association - www.internationaltin.org

Leigh Carr Chartered Accountants - www.leighcarr.co.uk

The National Association of Jewellers Educational Trust - www.naj.co.uk

Alex and Patricia Neish

Procom Audio Visual Suppliers - www.procom.uk.com

Rathbones - www.rathbones.com

Life's Kitchen- www.lifeskitchen.com

Splash Printing - www.splashprinting.co.uk

Teamwork European Services - www.teamworkexhibitions.co.uk

Paul and Rosemary Wildash are pleased to support contemporary pewter

Laila Zollinger, Wildshaw Ltd.



A.E. Williams

Established 1779



info@pewtergiftware.com
www.aewilliamspewter.com

Tel: 0121 643 4756
We are also on Facebook,
Twitter & Instagram

THE COMPANY

The Pewterers' Company is an ancient and continually evolving City Livery Company with medieval origins as a trade Guild. The earliest documented reference to it is in the records of the Corporation of the City of London dated 1348. The Company's own records date from 1451. It is ranked sixteenth in the order of civic precedence among a hundred and ten Livery Companies.

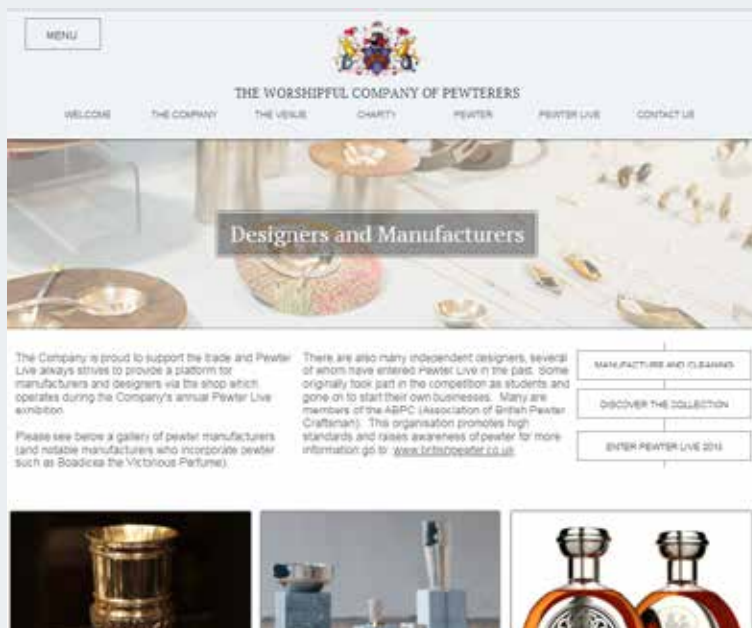
The first charter, granted by King Edward IV in 1473, empowered the Company to regulate the trade throughout the kingdom, unlike the powers granted to the majority of other Companies, whose jurisdiction was limited to the City and its environs. The Pewterers' Company could seize and destroy pewter below a certain standard, and also impose fines and other penalties on its members for failing to uphold the craft.

Today, the Company has an active and diverse membership, drawn from a wide range of backgrounds. The Company's principal activities are the support of the pewter trade in this country, the management of its charities, supporting the



Above: detail of the illuminated design drawn from the Company's most recent Royal Charter.

government of the City of London and the Armed Forces of the Crown and maintaining a lively and enjoyable corporate social life, meeting regularly in Pewterers' Hall. The first Hall, completed in 1496, was destroyed in the Great Fire. The second Hall, on the same site in Lime Street, which is still owned by the Company, was demolished in 1932. The present Hall was opened in 1961.



Pewter Live is a fantastic platform for the entrants and also manufacturers taking part in the shop which operates during Pewter Live. For more details of pewter manufacturers and to find out the results of the competition after the event, go to our website: www.pewterers.org.uk.

The Association of British Pewter Craftsmen also has a detailed website which gives information on the trade. There is also the online publication 'The Pewterer', produced by Court Assistant Alan Williams, with regular articles on the trade and history of pewter. The Company is regularly involved with the media with coverage for Pewter Live and by loaning items to exhibitions.

Contacts: www.pewterers.org.uk - for Manufacturers, Pewter Live and Company information
www.britishpewter.co.uk - The Association of British Pewter Craftsmen
www.thepewterer.org.uk - E-magazine trade and history of pewter
www.pewtersociety.org - Details on pewter marks and collecting

Investment services for charities of every size

At Rathbones, we remain committed to offering a comprehensive investment service to charities of all shapes and sizes.

We are proud to manage £4.9 billion of charitable funds¹, making Rathbones one of the UK's largest charity fund managers². My team and I would be delighted to meet you for an informal discussion about your charity's particular requirements.

For further information, please contact **Ivo Darnley** on **020 7399 0338** or email **ivo.darnley@rathbones.com**

1. As at 31 December 2017.

2. Charity Finance Charity Fund Management Survey 2017.



Rathbones
Look forward

🌐 rathbones.com
🐦 @Rathbones1742
📠 Rathbone Brothers Plc

The value of investments and income arising from them may fall as well as rise and you might get back less than you originally invested.

Rathbone Investment Management is authorised by the Prudential Regulation Authority and regulated by the Financial Conduct Authority and the Prudential Regulation Authority.



A WELCOME FROM THE MASTER PEWTERER

A warm welcome to Pewter Live in this its 30th year. This three day event showcases the best in pewter design and manufacture, exhibiting work from both students and professional craftsmen.

Pewterers in Britain today are producing some of the finest and most interesting pieces to be found anywhere in the world. Pewter Live has become the Worshipful Company of Pewterers' most successful means of supporting and celebrating our craft. By involving students in the competition we are encouraging a flow of talented young designers to express their thoughts in a metal that is both versatile and beautiful.

We greatly value the links we have built up with colleges throughout the UK and are thrilled that both the number of colleges and students entering their pieces stands at a record high.



The standard of the entries and the popularity of this competition grows every year and the competitors and exhibitors this year have not disappointed us. There are pieces that will stand the test of time and are worthy of future pewter collections.

I should like to congratulate all those taking part in Pewter Live 2018 and hope that our visitors enjoy the marvellous works on display.

Ann Buxton
Master of the Worshipful Company of Pewterers

PEWTER LIVE 2018

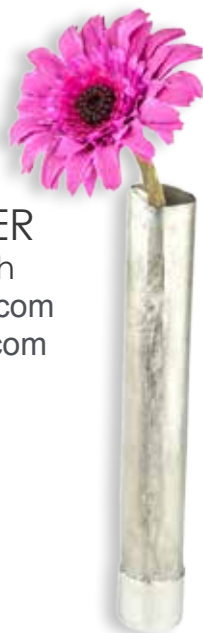
SHOP AT PEWTER LIVE

There will be an impressive range of contemporary pewter for sale at Pewter Live 2018.

The Company is proud to support the trade and Pewter Live always strives to provide a platform for manufacturers and designers via the shop which operates during the exhibition. There will be an additional display this year with presentation pieces made by the stall holders. For more details of pewter manufacturers go to our website: www.pewterers.org.uk

In addition to the stall holders items many of the Open and Student entrants items are for sale. If you are interested in purchasing an entrant's item either ask a member of staff or email the entrant directly (refer to the entry in the catalogue).

THIS IS PEWTER
by Ella McIntosh
mail@thisispewter.com
www.thisispewter.com



FLEUR GRENIER
design@fleurgrenier.co.uk
www.fleurgrenier.co.uk



GLOVER AND SMITH
ed@gloverandsmith.co.uk
www.gloverandsmith.co.uk



GORDON W ROBERTSON
info@gordonwrobertson.com
www.gordonwrobertson.com



KEITH TYSSSEN
keith@keithtyssen.co.uk
www.keithtyssen.co.uk



A E WILLIAMS
info@pewtergiftware.com
www.aewilliams pewter.com



PARTNERS IN PEWTER
info@partnersinpewter.co.uk
www.partnersinpewter.co.uk



TRISH WOODS

thwoods@sky.com
www.trishwoodsdesignmetals.com



REBECCA MARSTERS
rebeccamarsters@yahoo.com
www.rebeccamarsters.uk



GILL CLEMENT
online@gillclement.com
www.gillclement.com



HONORARY CHAIRMAN OF JUDGES



SEBASTIAN CONRAN - An internationally recognised designer, Sebastian Conran studied Industrial Design Engineering at Central St. Martins, where he gave the Sex Pistols their first booking and designed the record sleeves and posters for The Clash. He then started his career at Wolff Olins designing corporate identities for the likes of Pilkington Glass, moving on to lead hard-goods design at Mothercare. In 1986, he founded Sebastian Conran Associates design studio, which he continues to lead.

Sebastian is currently Designer in Residence at the University of Sheffield Science Faculty Founding; Trustee of the Design Museum; Chairman of the Creative Industries KTN steering group Technologies Innovation Network; Chairman Design Action in Scotland steering group, Scotland's Design and Industry knowledge exchange.

CHAIRMAN OF THE PEWTER LIVE SUB-COMMITTEE



LAILA ZOLLINGER - Director of Wildshaw Limited

Laila has been involved in the metal industry all her working life and takes a keen interest in all things tin related, from the mine to finished products.

Pewter has always held a particular fascination for Laila, due to its versatility and beauty, and the Viking's metal of choice can be found in numerous guises in her family home. The promotion of pewter is an ongoing challenge and Laila would dearly like to see pewter regain its prestige and be seen by the public as an equal to gold and silver.

GUEST OF HONOUR

The Master and Wardens of the Worshipful Company of Pewterers are greatly honoured to have HRH Princess Alexandra, the Hon Lady Ogilvy, as their guest at Pewter Live 2018. HRH will present the winning entrants of the competition with their certificates and prizes at the Presentation Ceremony on Thursday 24th May.

HRH Princess Alexandra, the Hon Lady Ogilvy KG GCVO



photograph – Hugo Burnand

Princess Alexandra was born on Christmas Day 1936 in London. Her father was The Prince George, Duke of Kent, the fourth son of King George V and Queen Mary. Her mother was the Duchess of Kent, daughter of Prince Nicholas of Greece and Denmark and Grand Duchess Helen Vladimirovna of Russia.

The Princess spent most of her childhood at her family's country house, Coppins, in Buckinghamshire. She lived with her grandmother, Queen Mary, at Badminton during World War II.

She was educated at Heathfield School and, while there, served as bridesmaid at the wedding of her cousin, the then Princess Elizabeth, and the Duke of Edinburgh.

Many of her affiliations reflect her interest in medical and welfare issues and she is well known for her work for the blind. She served as Chancellor of Lancaster University since its foundation in 1964, a post which she relinquished in 2004 and the following year she accepted an honorary Music Doctorate.

The Princess was created a Dame Grand Cross of the Royal Victorian Order (GCVO) in 1960 and a Knight of the Order of the Garter (KG) in 2003.



RICHARD PARSONS - Past Chairman of the Pewter Live sub-committee and continues as part of the judging panel.

He has many years of retail experience in the jewellery and silver industries and designs and sells objects made of precious metal, including many special commissions. His work includes advising both public and private collections, also writing and lecturing.

He is Upper Warden of the Worshipful Company of Pewterers, a Freeman of the Worshipful Company of Goldsmiths' and a Fellow of the Institute of Gemmologists. Richard is also Chairman of the The National Association of Jewellers Educational Trust



LUKE HUGHES - Hughes is one of the UK's leading furniture designers. He studied History of Architecture at Cambridge University and, over the last 30 years, he and his studio team have concentrated on designing furniture for the world's leading Academic, Institutional and Corporate interiors.

Clients include 80% of the colleges in Oxford and Cambridge as well as recent projects for Yale and Harvard in the USA. He designed the furniture for both the UK Supreme Court and Westminster Abbey (used in the Royal Wedding in 2011) and has just completed all the new liturgical furniture in Ely Cathedral.



ISABEL MARTINSON MBE has had a life-long interest in the arts and design. After a career in the Royal Navy, during which she was proud to become one of the first female officers to serve at sea, she moved into the commercial world, providing support to businesses through her involvement in trade associations. Fulfilling her desire to support artists and designers she was delighted to be appointed Chief Executive of The Giftware Association in 2000 and soon became involved in the work of the Worship Company of Pewterers and Pewter Live, each year presenting a prize to the student who had designed and created a product that had real commercial viability as a gift.

Through her experience of working with creative companies and gift retailers over 15 years, particularly running the GA's prestigious annual Gift of the Year awards, she has an eye for good design and trends and what appeals to consumers. Isabel stepped down from her role at The Giftware Association in 2015 and was appointed Executive Chairman of the Considerate Constructors Scheme in 2016. She is a Court Assistant of the Worshipful Company of Pewterers.



MARC MELTONVILLE Food Historian for the, Historic Royal Palaces, England.

Marc trained in Ceramic history, form and construction. After college he went to work in the media, firstly in advertising and then the writing of children's books. To date he has over twenty books in print. Marc has worked in museums for over twenty years in education, exhibition design and, more lately, interpretation. A chance meeting with a noted food historian led him to be involved with the first experiment with live historic cookery at Hampton Court in 1991; supposedly a one off project. Marc has worked with the Historic Royal Palaces ever since, most famously on the Tudor kitchens of Hampton Court, but also the Royal Kitchens at Kew and the Chocolate kitchen of George II.

Marc works as a consultant for projects on the history of food, drink and dining, both for historic sites and modern restaurants. He can often be found over in Virginia making historic whisky.



SAM WILLIAMS was born into a Pewtersmith family. Sam has been living around the world of Pewter manufacturing since the age of five. Officially starting with A E Williams, Birmingham, at the age of seventeen, Sam gradually learnt about the many different processes of working with Pewter, under his father's guidance, making him the 7th Generation of the Company.

Sam has worked with many different influential customers since starting with his family company including the likes of Historic Royal Palaces, The White House, Warner Brothers and Universal Studios. Working his way up to a sales role within the company, Sam is now often seen exhibiting at many different trade shows across the UK, North America and even Japan. His most recent commission includes work under license for The PGA Tour, Famous Grouse, Beverly Knight and Lisa Stansfield.

PRIZES AND PRIZE-GIVING

OPEN COMPETITION - The First Prize will be £1,000

STUDENT COMPETITION - In each category: **OPEN** - **STUDENT**, **DECORATIVE** and **JEWELLERY**
1st Prize: £300, 2nd Prize: £200 3rd Prize: £100

BEST IN SHOW will receive an additional £700 bringing their total prize money to £1,000.
Subject to the judges decision which will be final.

HRH Princess Alexandra, The Honourable Lady Ogilvy will present the Prizes at Thursday 24 May.

All winning entrants receive a certificate of entry signed by the Master of the Worshipful Company of Pewterers. We are enormously grateful to the National Association of Jewellers Educational Trust for providing funding for all the student prizes.

INDEPENDENT AWARDS

In both the Open and Student categories the Company awards prizes which are detailed at the beginning of each category on the following pages.

Additionally the Company is most grateful to the organisations and individuals who give independent awards. These awards help the students to think beyond their single entry to their future career. Commercial appeal and unique design are vital parts of modern trade and Pewter Live aims to provide encouragement at the early stage of many of these designers' careers in pewter and recognition to those established in the trade. The following awards are a vital part of the Competition.

We are especially to *The NATIONAL ASSOCIATION of JEWELLERS EDUCATIONAL TRUST* a charity devoted to the provision of funds for education and training. The Trust have sponsored all of the prizes for the student competition. For more information on the NAJ Educational Trust go to: www.naj.co.uk/centenarytrust



THE ABPC COMMERCIAL PRIZE - The ABPC (Association of British Craftsman) Council has raised from its members, for a third year, a prize fund for a 'commercial prize'. This award will be awarded specifically to the Pewter Live entry which, in the judges' opinion, has the greatest commercial potential. www.britishpewter.co.uk



Above: Her Royal Highness The Countess of Wessex, with Patricia Neish, awarding the Patricia and Alex Neish Award. prize to Open Entrant Gordon W Robertson.

THE ALEX AND PATRICIA NEISH AWARD
Liverymen Alex and Patricia are long-standing supporters of Pewter Live and have made a wonderful contribution, not only to the current trade, but to the preservation of historical pewter.

They recently granted their collection of fine pewter to the Smith Art Gallery and Museum at Stirling. Their award acknowledges the design and skill of the winner, encouraging excellence and promoting items which will become future collectors' items.

The Neish Collection is on display in the Stirling Smith Art Gallery and Museum
Tues - Sat 10.30am - 5.00pm, Sundays 2.00pm - 5.00pm www.smithartgalleryandmuseum.co.uk

CITY AND GUILDS AWARD
www.cityandguilds.com

City & Guilds was established in 1878 to help individuals develop their talents and abilities for career progression. A global leader in vocational education, they have awarded 20 million qualifications since 2000 alone. The Award is for those who have not only taken a City & Guilds course, but have reached the highest standards of craftsmanship and skill.

City&Guilds Group

OPEN COMPETITION

Pewter Live's mission is to encourage innovation in design in order to exploit pewter to its fullest potential and produce ideas that will stretch the boundaries of this marvellous material. The object is to bring pewter alive; to demonstrate an understanding of its inherent qualities and its appeal and relevance to contemporary consumers of all ages and tastes.

OPEN CATEGORY BRIEF 2018

2018 marks the 30th anniversary of Pewter Live. In homage to this, the Committee set the challenge of producing an item, or range of items, that evoke a celebration, be it a wedding, christening, winning a competition or gaining a degree. The options are endless.

The judges are looking for a new slant on traditional items. The brief asked entrants to produce items which would be attractive to well known retailers such as John Lewis and Selfridges. With this in mind it was important for the designers to not only produce items which would stand out but would be adaptable to large scale production.

The judging panel collectively has huge experience in retail, presentation and artistic interpretation in design. They will be looking not only at the final entry, but the accompanying design statement and packaging, if applicable, which provides vital added value in the current market.

The final judging takes place on Tuesday 22 May and the winners will be announced at the Presentation of Prizes on Thursday 24 May. During the exhibition entrants are encouraged to offer their items for sale. See pages 10-11 for more details.

1st PRIZE: £1,000

to be awarded at the judges' discretion.

Additionally, Certificates of Commendation will be awarded.

There are also several independent awards to be awarded,
each judged by the donor (see previous page)

Gill Clement
online@gillclement.com
www.gillclement.com

COLLECTION OF WEDDING JEWELLERY

Gill Clement is an established jewellery designer recognised for her bespoke, eclectic designs.

Her bridal collection consists of a range of romantic jewellery including tiaras, necklaces, bracelets, hair pins and belts that incorporate antiqued filigree pewter, adorned in fine Swarovski crystals and pearls, to create a graceful and glamorous look for your celebratory day.





Karen Stott
kystott@hotmail.com

SALTY SUES – pinch salt bowls with spoons and bases

Using dappled shade as inspiration for the design of the base and slight texturing to the bowls, these Salty Sues are designed to be used individually or in multiples. Twisty stemmed silver spoons with gilded bowls are added to create interest and contrast. Perfect for engagement or wedding presents.



Trish Woods
thwoods@sky.com
www.trishwoodsdesignmetals.com

THE BUTTERFLY

In many cultures the butterfly is recognised as a symbol of celebration and transformation. A 'kaleidoscope' of butterflies are etched onto the surfaces of this vibrantly coloured pewter dish – the reverse is uncoloured offering visual contrast and subtle secret to its dynamic front face. Readily manufactured, this is a gift for all occasions.

Tracy Alyson Broad
tracybroaddesign@gmail.com

A PAIR OF THREE STEMMED 'TOASTING FLUTES'

My aim as a designer and creative artist is to produce –
"Objects to Use, Admire and Swoon Over!"

I wanted to promote the use of pewter in a contemporary way, using traditional hand crafting techniques to celebrate the skills and talents of the pewtersmiths based at A R Wentworth in Sheffield. The 'flutes' developed using strong graphic lines and experimental work in my sketch book. They were inspired by reflections in glass stems from traditional flutes and wine glasses. This exploration then grew into the Three Stemmed concept, creating an elegant, classic design that can be used, admired and swooned over!

Crystal Glass kindly donated by DARTINGTON CRYSTAL (TORRINGTON) LTD. Thank to Ben Wardleworth at FutureLab3D for his support with technical CAD work.



Ella McIntosh
mail@thisispewter.com
www.thisispewter.com

'CREATURES GREAT AND SMALL'

Creatures great and small - A range of contemporary pewter money boxes to celebrate a christening, new born or baby's first birthday. Including the lyrics to a popular nursery rhyme, money boxes are a lovely gift to encourage penny saving, be a reminder of celebration and become a family heirloom.

Nadine Vanoost
nadine@8archer.com

GALA ZAHRA (zahra is flower in Arabic) - aperitif set

We celebrate with food and drinks. Inspired by my porcelain work. This is a set of a small pewter appetizer dish and a small handcarved porcelain bowl. To be presented on a wooden serving tray with champagne and appetizers in the dishes. The pewter dish is moulded from a handcarved porcelain dish. The set looks like a flower. You can use it to serve olives, nuts, cheese, biscuits, chocolates, ... These items are for small quantity production. They are part of a series with the same carved design.



Nadine Vanoost
nadine@8archer.com

ISIPHO (gift in Zulu) - celebration gift

A celebration gift, whether you want to celebrate love, friendship, a new life or a life that has ended. It is cast in sand, then polished. It can be made as rough or as smooth as the client wishes. Any figure with simple lines can be made (star, moon, heart, flower,...). It is low cost, as there are no expensive moulds to be made, neither is it time intensive. Inspiration comes from the cross I made for my father's coffin, when we could not find anything nice at the funeral home. Every piece is unique.

Viviana de Gallegos
enquiries@silvercelebrationslondon.com
www.silvercelebrationslondon.com

PARTY CAKE CANDLE HOLDERS, 8 collections for every occasion.

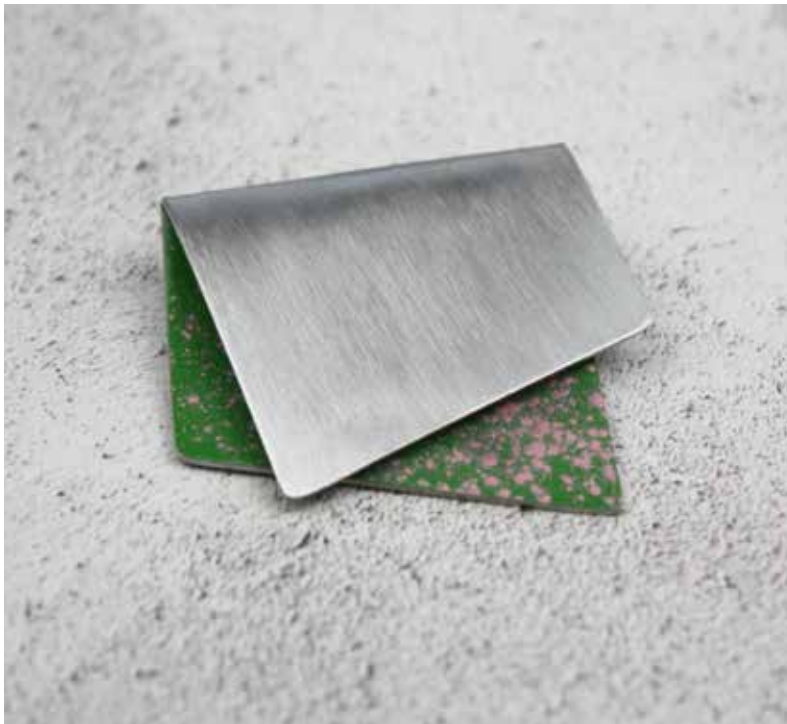
The popularity of the Great British Bake Off has invigorated the UK baking market and millions have been inspired to create elaborate cakes. By contrast, cake decorations, usually available in variety of garish plastics, always seem to let the side down. With that in mind, I have designed a collection of silver-plated pewter cake decorations in a range of unique styles to enhance any celebration cake. These precious decorations are intended to make memorable gifts for birthdays, christenings and special anniversaries that will be treasured and enjoyed at celebrations for many years to come. Launched under the brand Silver Celebrations London.



Jim Stringer &
Laura Cobane Stringer
quirkymetals@gmail.com
www.quirkymetals.com

"BUNCH" BOWLS

Centrepiece bowls inspired by a floral bouquet featuring flowers, foliage and insects. Designed as a statement piece to mark a special event, as one of a group, or as a stand alone feature piece in a contemporary interior.



Rebecca Marsters
rebeccamarsters@yahoo.com
www.rebeccamarsters.uk

GEOMETRIC JEWELLERY

My collection of bespoke geometrical jewellery is available for both men and women, with has a choice of 23 eye-catching enamel centers. The men's collection includes cuff links, suit pins and tie slides and for women earrings in both studs and dangles and a versatile brooch that can be transformed into a necklace by a connectable chain.



Hannah Dipper & Robin Farquhar
People Will Always Need Plates
enquiries@peoplewillalwaysneedplates.co.uk
www.peoplewillalwaysneedplates.co.uk



SUPER BOWLS 2018

These pieces are a contemporary response to the traditional engraved trophy, cup or platter, using colour and finish rather than text to denote occasion. Each double-walled spun pewter bowl can be specified in a variety of bespoke finishes or colours to match the occasion, celebration or commemoration.

Claire Skelton
claire@claireskelton.com
www.claireskelton.com

CIRCA

This contemporary chain has been made by individually casting pewter links, melting scrapped pieces to create new. Inspired by a previous collection of torcs which echoed ancient status jewellery, I have scaled the process down, creating links for a ceremonial collar celebrating the metal and its many textures and patterns.



Freja Taylor
f.e.t@icloud.com

THE GAME OF LIFE AND DEATH

My design is a pair of potion bottles, one to represent life and the other death. The bottom half will be glass and the surrounding form will be a decorative pewter figure. I intend to use forming and carving techniques in my making. There will be fragments of silver and copper.



Sandra Litchfield
litchbeaconpoint@aol.com

CELEBRATION

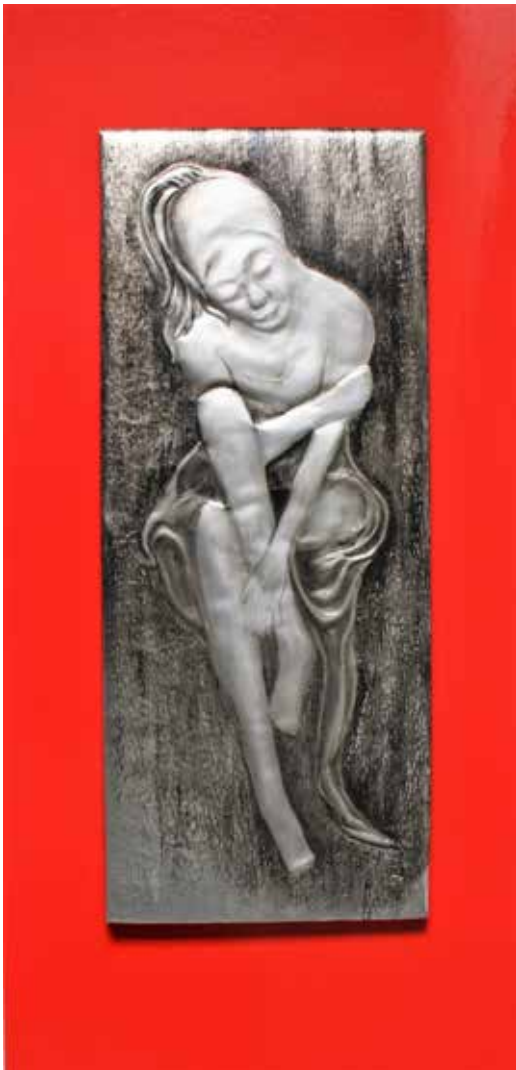
Traditional games, made from English lead-free pewter are a perfect way of celebrating anniversaries. Birthdays, Christenings, Weddings or “just because” can be marked by this thoughtful gift, which will give hours of joy, in the years to come.

Gina Walters
robprewett34@outlook.com

CAST PEWTER CHARGER

Cast Pewter Charger; 40cm diameter, with the addition of a patinated Bronze Spherical Dice, 4cm in diameter. Market sector; Liberty department store or galleries.

This is intended as a display item, celebrating the serendipitous nature of human ingenuity and progress through time. The inspiration is taken from 17th century Wriggle-Work Chargers, which traditionally carried linear narratives. Here, the narrative uses luck motifs as metaphor. The spherical dice does not come to rest, but is contained in the arena defined by the Chargers rim – a Celebration of Change and Chance as constant truisms borne out through time.



Joy M. Wiltshire
patjoyw@gmail.com

LEGACY OF WOMANHOOD

"Legacy of Womanhood" is a hand sculpted piece of wall-art that gives a unique design shape to the creative use of pewter. Inspired by the Impressionists (ballet dancers) to today's modern young woman, worked in an art nouveau style. The red background is in celebration of 'women' - (passion, love, seduction, energy, danger, adventure) and so much more!

Sue Rawley
suerawley@gmail.com

WEDDING CHEST

I was inspired to create a wedding chest based around the traditions of a Dowry or Hope Chest. The chest is made from English Oak, a wood that represents longevity and fertility. The design I have embossed and engraved into the pewter is based on folk lore tales which include a Moon, Sun and Stars, as well as the Tree of Life. I have also included ivy leaves and acorns, a symbol of love and a popular luck charm and a crow for insight and protection. The jewels incorporated into the design are Mother of Pearl shell, Ammonites and Peridot, a crystal that draws in health, wealth and happiness.



Susannah Way
info@swayjewellery.com
www.swayjewellery.com

THE TALE OF ROMANCE FRAME

This frame is designed with 'charms' alongside the photograph. The charms can be changed depending on the occasion. It has been inspired by anniversaries and memories collected over time. The materials used are plywood, pewter and glass. The charms incorporate other materials, eg. silver, paper and pearls. The patterns in the charms were created by pressing and engraving. Photograph by Alvin Weetman. Wedding photography by Jesse Wild.

Ella McIntosh
mail@thisispewter.com
www.thisispewter.com

MILESTONE MEDALS

Celebrate each achievement of babies' first years with Milestone Medals. Including memorable highlights as 'first steps', 'first words', the milestone medals are a fun way to celebrate these special occasions. Easily posted, the medals can either be bought individually or as a set so you're ready to celebrate each moment.



10TH WEDDING ANNIVERSARY

10th Wedding Anniversary Celebrate your 10th wedding anniversary by gifting Pewter, an alloy consisting mainly of Tin. Choose from a range of handmade pewter items including hanging decorations and homeware to celebrate the 10th anniversary, wedding gifts or just to say 'I love you'.



OPEN - STUDENT

In this category the students have been given the opportunity to submit entries with the same brief as the professional Open Competition. We hope that this will encourage students and give an introduction to the professional competition.

2018 marks the 30th anniversary of Pewter Live. In homage to this the Committee set the challenge of producing an item, or range of items, that evoke a celebration, be it a wedding, christening, winning a competition or gaining a degree. The options are endless. The judges are looking for a new slant on traditional items. The brief asked entrants to produce items which would be attractive to well known retailers such as John Lewis and Selfridges. With this in mind it was important for the designers to not only to produce items which would stand out but would be adaptable to large scale production.

PRIZES: 1st Prize in each section: £300, 2nd Prize in each section: £200, 3rd Prize in each section: £100. Best in show will receive an additional £700. We are enormously grateful to the National Association of Jewellers Educational Trust for providing funding for all the student prizes.



Callum Skinner
callumskiner@btinternet.com
Buckinghamshire New University
BA Product Design (year 2)

CELEBRATION ID BRACELET

A pewter and leather bracelet designed as a piece of male jewellery to mark a celebration. There is a barcode engraved into the back of each piece which when scanned with a smartphone displays a celebratory message, ID tag or medical information.

Joshua Broadhurst
joshuabroadhurst123@gmail.com
Buckinghamshire New University
BA Product Design (year 2)

CONSTELLATION CELEBRATORY GIFT

This mahogany with pewter inlay is a star constellation of Burnley on my birthday 25th January 1998. It is intended to be a celebratory gift to a loved one. It was made using a milling machine with rotary base from a detailed CAD drawing, inlaid with pewter and hand polished.



Beverley Griffiths
be.griffiths@hotmail.com
De Montfort University
B.A. Design Crafts

BRIDAL FAVOURS

Bridal Favours' are intended to be worn by the wedding party and kept as treasured mementos of the celebration.

The sculptural lace piece is a bespoke electroformed swatch of the bridal gown fabric. A slush cast pewter champagne cork is ideal for inscribing whilst enabling large scale production.



STUDENT - OPEN CATEGORY

Carly Richards
carly3488@gmail.com
Truro College
FdA Silversmithing and Jewellery

REDISCOVERED

My piece is inspired by the beautiful shapes and textures that are created by being on the sea floor, as well as the natural wildlife that lives there.

It has been created to look as if it is a piece of treasure discovered on a shipwreck that has been brought up to the surface and repolished. This is an award for scuba diving clubs and associations.



Estelle Burton
estelle_thomas@hotmail.com
University Centre Hastings
BA Designer Maker

LOST TO THE SEA

These pieces are a celebration of the sea and my coastal home in Rye, East Sussex. Inspired by this ever-changing environment, specifically the physical impact of the waves, each one is completely unique. They showcase a new technique I have developed, which allows me to bond pewter directly with glass.



Ceciel van Oevelen
cecielvanoevelen@googlemail.com
Truro College
FdA Silversmithing and Jewellery

TO HAVE AND TO HOLD

A Myrtle inspired bridal neck piece, tied with a ribbon decorated with cast pistils. According to Greek Mythology, Myrtle evoked lasting love and happiness and since Victorian times, royal brides have carried a sprig of Myrtle in their wedding bouquet to bring good luck and prosperity.



DECORATIVE ARTS

The students were asked to design a pewter item for the gift market. The design could be either functional, fun or merely decorative. We wanted them to look at the current market, bearing in mind retailers such as John Lewis or Heal's.

The judges are seeking originality, beauty and innovation. Students were asked to consider what people need/want at the moment and to think about lifestyle trends. More and more people are entertaining at home: a wine chiller, a table centre piece, a modern take on the traditional vase, etc.

They also had to consider the visual benefits derived from the integration and use of colour to complement and enhance the pewter, using additional materials as appropriate. The final item had to be made predominantly of pewter. We also asked that consideration should be given to the possibility and practicality of large-scale production.

PRIZES: 1st Prize in each section: £300, 2nd Prize in each section: £200, 3rd Prize in each section: £100. Best in show will receive an additional £700. We are enormously grateful to the National Association of Jewellers Educational Trust for providing funding for all the student prizes.



Aaron Mitchell
aaronmitchell000@gmail.com
Buckinghamshire New University
BA Product Design (year 2)

PEWTER/WALNUT: LIFE/WORK USB STICK

A functional double 16GB USB memory stick combining pewter, walnut and a magnetic closure. Depending on user needs, each half can be used for different purposes to prevent the mixing of work and personal life. Files and memories can be stored together within one product, yet kept on different halves.

STUDENT - DECORATIVE CATEGORY

Sean West
sean_w19@icloud.com
Buckinghamshire New University
BA Product Design (year 2)

TESSELLATING SNOWFLAKE COASTERS

These tessellating coasters are made from 6mm thick Corian, CNC machined with molten pewter poured into the groove and hand polished. The technical challenge is that the melting point of the pewter and the Corian are very similar, the Corian had to be heated to allow the pewter to flow.



George Folkard
georgefolkard@gmail.com
Buckinghamshire New University
BA Product Design (year 2)

PEWTER PAPERWEIGHT

This Guggenheim Museum inspired paperweight utilises pewter's low melting point and high density. Pewter is poured into grooves in the wood leaving a contrasting textured spine demonstrating the novel manufacturing process. Different sized pewter bands highlight the impression at the bottom of the piece, hinting at it's weight.

Thistle Martin
thistle.martin@gmail.com
Buckinghamshire New University
BA Product Design (year 2)

TEA STRAINER

This tea strainer is decorated with 2 concentric lines, evoking patterns used in pewter by my 18th Century American ancestors. Thomas Danforth started producing pewter in Connecticut in 1733 and his family produced fine flatware and tankards for several generations. The edge is carefully melted to highlight the material's properties.



Helen Connolly
h.connolly.t21@btinternet.com
Truro College
FdA Silversmithing and Jewellery

BRIDGE THE GAP

These Bud Vases were inspired by my interest in bridges and geometric shape.

The vase shape was taken from the intricate engineering parts under the bridge and contrasts the hard engineering with the delicateness of the vases.



Jasmine Tyler - Street
jazminestreet@gmail.com
Truro College
FdA Silversmithing and Jewellery

PEWTER CAST WOODLAND CHANDELIER

I am happy with the final outcome of my chandelier, because it is aesthetically pleasing, functional and in scale. I have used both copper and pewter in my design. I have used many techniques and I have most definitely developed my skills in design and manufacture. For both my Pewter Cast Woodland Chandelier and my Bangle Branches I have taken inspiration from the Helston Woodlands. I have also cast my Pewter twigs into Delft Clay.



STUDENT - DECORATIVE CATEGORY

Fern Beall
fern.beall97@gmail.com
University Centre Hastings
BA Designer Maker

BENEATH THE SURFACE

I have spent my whole life living next to the sea, inspired by shipwrecks and what's left behind. In my pewter piece, I was influenced by aging sunken tableware, the barnacles have grown over the cup and spoon, and have taken them for their own.



Rachel Bishop
puffafishjewellery@yahoo.co.uk
Truro College
FdA Silversmithing and Jewellery

WABI SABI LAMP

My inspiration for this lamp is the Japanese design philosophy Wabi Sabi where there is beauty in imperfection, and the sails from Chinese junk boats. I hope to have evoked the feeling of movement and fluidity in my design which has been topped with bright coloured lampwork beads also made by myself.



Mary Khan
mavk55@aol.com
University Centre Hastings
BA Designer Maker

Pearly Lamp

Thirty year celebrations are often marked with pearls. Blending light and lustre, this table lamp reflects the tradition and good causes championed by the Pearly Kings and Queens. Evoking a beacon of hope and pride, formed of an etched pewter base and iridescent glass crown, adorned with cuttlefish cast buttons.



JEWELLERY

Today's High Street is awash with jewellery and accessories, few of which are made of pewter. We challenged the students to come up with designs which could promote pewter either as an accessory or part of the total look. Taking this into account, they were asked to design a piece or range of jewellery, which would appeal to young people to complement today's free-form fashion. Similarly to the Decorative Arts category, students were encouraged to keep the commercial price relative to the intended buyer.

PRIZES: 1st Prize in each section: £300, 2nd Prize in each section: £200, 3rd Prize in each section: £100. Best in show will receive an additional £700. We are enormously grateful to the National Association of Jewellers Educational Trust for providing funding for all the student prizes.

Rhi Christie
rhichristiedesign@outlook.com
Cardiff School of Art & Design,
Cardiff Metropolitan University
Artist, Designer: Maker



ONE OCEAN

This series has been designed to raise awareness of the significant decline in global shark populations. I'm passionate about using craft and design to delight and inform. 50% of sales profits will be donated to The Shark Trust, whose mission is to safeguard the future of sharks through positive change.



Iris Vilu
i.vilu0320161@arts.ac.uk
London College of Fashion
BA Fashion Jewellery

CHAIN OF THE SOVIET OFFICE

The necklace, originally designed for an Estonian rapper Tommy Cash, combines a Middle-Eastern carpet, often also referred to as a 'Russian' carpet, and the typology of a sumptuous chain of office to represent and honour the singer's background as well as my own.



STUDENT - JEWELLERY CATEGORY

Pei-Yu Lan
peggylan315@gmail.com
London College of Fashion
BA Fashion Jewellery

CRASH! CRASH!

The idea is to compare, contrast and imagine the confidence of the imperfect and the none-hiding true self with the fake now-a-day society. Cracking and crashing the mask, shelter or the fake is the main idea of the concept.



Wei Fang
w.fang1@arts.ac.uk
London College of Fashion
BA Fashion Jewellery

UNDER THE SURFACE

"Under the surface" is an entirely handmade head piece inspired by Bjork's music video, Utopia. It expresses my sense of aesthetics. I see beauty in the human's inside, Perfectly natural creatures are the most beautiful things in the world. If I want to make myself look good, I will use flowers, plants, make up or cosmetic surgery.



Heather Bailey
heatherbailey890@gmail.com
Cardiff School of Art & Design,
Cardiff Metropolitan University
Artist, Designer: Maker

ESCAPE WITH KOI CARP

We live in a world of constant movement and stress. Koi carp are the ultimate manifestation peace and tranquillity. I combined their form with strong Aztec inspired lines to encourage people to touch and hold the objects. Combining serene associations of koi carp with bold tactile lines the necklace may provide a means by which to escape from a hectic world.





Shu Qi Liang
s.liang0220161@arts.ac.uk
London College of Fashion
BA Fashion Jewellery



UGLY BEAUTY

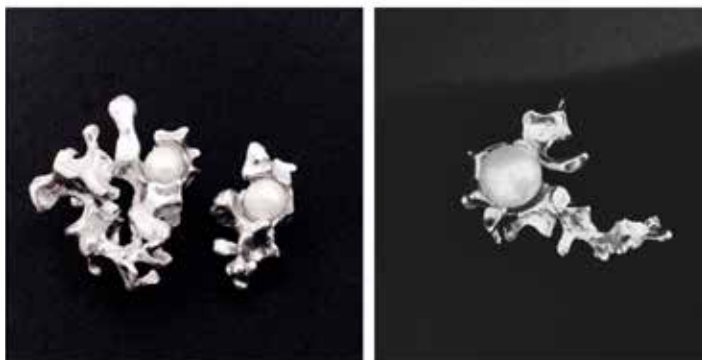
Inspired by oysters and the natural pearls inside them. I intended to combine beauty and ugliness in the same place and make no distinction between them. Most people are used to affirming things as visually either beautiful or ugly, as they follow the general idea in society of the sense of beauty and disgust. Pieces are made with sand casting as well as using brass and pearls.



Shanhu Ji
coral0tvxq@126.com
London College of Fashion
BA Fashion Jewellery

UNDER THE SKIN ring, earrings and brooch

I wanted to use the state of many balls in the water and then to simulate the state of cells in human body. Afterwards I put pewter into it and imagined the different shapes and distortions of the space due to the different substances which are injected into our bodies.



STUDENT - JEWELLERY CATEGORY



Heather Bailey
heatherbailey890@gmail.com
Cardiff School of Art & Design,
Cardiff Metropolitan University
Artist, Designer: Maker

ANTELOPE SKULL

The skull bears tribal markings to help people feel empowered and able to conquer anything in their world.



Beverley Griffiths
be.griffiths@hotmail.com
De Montfort University
B.A. Design Crafts

A SLICE OF LIBERTY

“A Slice of Liberty” is inspired by the 100-year anniversary of women’s suffrage which lead to increasing equal rights and female empowerment. This brooch echoes Edwardian fashion, but reflects contemporary styles as it allows the wearer to re-arrange to their individual preference. Large-scale production can be achieved through casting methods.



Rachel Barnard
rachieb@rocketmail.com
University Centre Hastings
BA Designer Maker

PEWTER FLASH

A range of unisex jewellery presenting flashes of pewter mounted in colourful silicone.

Colours can be customised. Pieces are able to be worn in different ways. A necklace may become a belt or perhaps a headband. A bracelet can be a carrier for a ring.

Maryna Krychevska
m.krychevska1@arts.ac.uk
London College of Fashion
BA Fashion Jewellery

“I AM TIRED OF HATING MY BODY”

The main concept was to show that nowadays people should not have any restrictions in what to wear and how to look in society. Being thin or fat, there is a choice for you. Well-known American model, Crystal Rein, inspired me in creating such a big and heavy ring. The ring presents the fat that envelops the finger. Pewter, as the material has well conveyed all the irregularities and flaws that occur in the female body.



Dayeong Shin
ssdayeong@gmail.com
London College of Fashion
BA Fashion Jewellery

FASHION JEWELLERY (age and generation)

This jewellery piece is inspired by the combination of the young generation and the old generation. Although the old are physically old, their minds are still young and they are still adventurous and changeable in their life.

This piece shows the passing of life with the wrinkles of the pewter and plastic, and the thread that shows the young generation.

STUDENT - JEWELLERY CATEGORY

Jasmine Tyler - Street
jazminestreet@gmail.com
Truro College
fdA Silversmith & Jewellery

BANGLE BRANCHES

The combination of the different elements of form, colour, texture, proportions, style and layout have helped to produce a beautiful bangle that I find aesthetically pleasing. The final aesthetic appeal of each bangle depends on the twig used to cast. Some twigs work better than other.

For both my Pewter Cast Woodland Chandelier and my Bangle Branches I have taken inspiration from the Helston Woodlands. I have also cast my Pewter twigs into Delft Clay.



Shanhu Ji
coral0tvxq@126.com
London College of Fashion
BA Fashion Jewellery

UNDER THE SKIN ring

Cosmetic surgery is becoming more and more common. Many people achieve their ideal beauty by injecting and filling their bodies. Some parts of the human body are replaced or implanted by other materials. Therefore, I want to observe the internal state or space of skin protuberance or deformation due to these materials.



Yiwen Chen
w.chen20@arts.ac.uk
London College of Fashion
BA Fashion Jewellery

JESMONITE & PEWTER RING

This jewellery made of pewter and jesmonite, has the function of connecting people. Designed to be worn by two people, holding in hands while wearing it. It is inspired by the internal relationship between people. The two finger ring can connect to the single ring, the size of the single ring can change depending on the persons sizes.

Yemeng Hao
y.hao0620171@arts.ac.uk
London College of Fashion
BA Fashion Jewellery

GEISHA MASK

Geisha mask is made of pewter, copper, fabric and threads. This piece should be worn on the back of the head which conveys the idea of persona and real-self. The mask is confined by pewter and hand embroidery which stand for Geisha's traditional life style in the modern world.



Wei Fang
w.fang1@arts.ac.uk
London College of Fashion
BA Fashion Jewellery

AESTHETICS OF ANATOMY

Aesthetics of Anatomy is a handmade and sculpted piece of pewter - aesthetically of pure beauty from the inside, with a sense of X-Ray imagery. The combination of bones with petals expresses the true beauty of anatomy. Covering the hand with a transparent semi-circular bangle suggests that it is not fantasy that technology can replace body-parts in the future.



STUDENT - JEWELLERY CATEGORY



Wai Yan Choi
w.choi1@arts.ac.uk
London College of Fashion
BA Fashion Jewellery



OFF STANDARDS

Rules and social standards are set up to shape our sense of normality. These influence our behaviour and perception. The collection challenges this: Can being slightly off standard or being distorted change the way we see ourselves as well as others? By referencing the distortion of the daily item in order to encourage a fresh innovative look at the standards of beauty.



GILL CLEMENT works from her studio/ shop in Mumbles, South Wales creating timeless pieces of jewellery.

These bold earrings are filigree pewter decorated with Swarovski Crystal.

www.gillclement.com
online@gillclement.com



SUPPORTING
EXCELLENCE
IN BRITISH
CRAFTSMANSHIP

THE QUEEN ELIZABETH SCHOLARSHIP TRUST

In addition to contemporary design the Company is keen to encourage traditional trades and crafts. The Pewterers' The Seahorse Trust is currently supporting the Queen Elizabeth Scholarship Trust (QEST) the charitable arm of the Royal Warrant Holders Association. QEST was established in 1990 to celebrate the 150th anniversary of the Association and the 90th birthday of Queen Elizabeth, The Queen Mother. Since 1990 the Trust has awarded over £3 million to over 400 craftspeople aged between 17 and 58 for study, training and work experience.

QEST was established to help support craftspeople of all ages and from all backgrounds, at a critical stage in their careers and thus sustain traditional British craftsmanship.

The apprentices chosen by the Company and QEST to be supported over three years are: Sarah Hobbs who trained at Canterbury Art College specialising in general art and design. Sarah has always been interested in engraving especially as her father works as an engraver. This is a highly specialised skill and the QEST apprenticeship will allow her to learn this trade at J.J. Bergin. J.J. Bergin is a long established Company which engraves items for



Above: engraving by Sarah Hobbs.

Asprey, Garrard and has had done several items for the Queen and other members of the Royal Family. Sarah is now in her second year as an apprentice supported by the Seahorse Trust and has learnt many specialist skills which can only be done by hand. The Company also supports Sam Woolman, whose apprenticeship is with Paul Horner at Langford Veterinary School at Bristol University specialising in farriery. Sam is now in his second year and has learned traditional blacksmithing as part of his training.

To find out more about QEST go to:
www.qest.org.uk



Boadicea The Victorious
LUXURY PERFUME COLLECTION

www.boadiceaperfume.com



CHRIST'S HOSPITAL SCHOOL

Although Pewter Live issues briefs to the professional designers and University/College level students we are also keen to encourage pewter making in Secondary Schools. The students of Christ's Hospital School in West Sussex have produced a stunning collection of pewter. Led by their teacher of Design and Technology, Rebecca Watson, they have entered their items to be displayed during the Pewter Live exhibition.

Christ's Hospital was founded by King Edward VI in 1552, the original site on Newgate Street, London before moving to Horsham in 1902. Today we are a full boarding school for boys and girls from 11 to 18 years old and continue to have strong links with the City of London. Sixth Form students can choose Product Design at A-level and spend the first year honing their practical and visual communication skills.



Henry Sanders

The first project the students engage with encourages the students to explore Art Deco and what features typically characterised Art Deco products from buildings to furniture. Developing this into an aesthetic specification, the students can start to experiment with a range of ideas for their Art Deco inspired pewter jewellery piece. They use CAD modelling, plasticine modelling, tracing paper and traditional sketching to develop and refine their final ideas. To realise their outcomes, we use laser cut MDF to create a model which is cast in silicone.



Above from left, Jonathan Feyibunmi and Tom Ekin

This silicone mould is then used to cast their final design in pewter before filing and polishing.



Above from left, Cai Elias and Jodie Hart

The outcomes this year show the students have a good understanding of the key elements of the Art Deco movement. Henry has used inspiration of sailing and boats to create his layered overlapping arcs. Cai and Jodie used a centralised line of symmetry and stylized geometric shapes to create their pieces. Jonathan and Tom use asymmetrical patterns to execute their well balanced designs.



Above top left, Luke Leng, top right, Adrian Yee and Steph Chan.



PEWTER LIVE 2017

LAST YEARS WINNERS AND HIGHLIGHTS

The 2017 Open brief asked entrants to produce a pewter item, or range of pewter items, that would complement a contemporary lifestyle, made of mixed materials, with at least 50% being constructed of pewter. We had a wide range of innovative designs and the student competition attracted entrants from nine universities.

OPEN COMPETITION WINNER

THE TRANSITION TABLE
Rupert Senior
www.rupertsenior.co.uk



Pictured right, winner of the Open Competition, Rupert Senior, receiving his award from Nick Crean, Chairman of the Queen Elizabeth Scholarship Trust (QEST) and Co-Owner of Prestat Ltd.



OPEN CATEGORY - COMMENDED

'U POUR' DECANTER by Trish Woods, *pictured bottom right*, and TABLE LIGHTS by Gordon W Robertson & Cairn Young *pictured right on show at Pewter Live 2017 with Past Master, Rod Kent and The Rt. Hon. the Lord Mayor, Dr Andrew Parmley*, and TOPIAN COLLECTION by Steve Anwar for Wentworth Pewter, *pictured top right*.

BEST IN SHOW

HYGGE HERB GARDEN
Heidi Carthew
Truro College
FdA Silversmithing and Jewellery



STUDENT COMPETITION - JEWELLERY SWISS ARMY KNIFE CHAIN by Suinan Li of London College of Fashion pictured below left Second: DISCOVER YOUR INNER MY LITTLE PONY by Qingran Yu of London College of Fashion, Third: IRIDESCENT CAPTURED IN PEWTER by Sarah Shelton-Palmer of Truro College *pictured bottom left*, Commended: "APPROPRIATION? APPRECIATION." by Seo Youn Ha of London College of Fashion, Commended: SUCCULENTS IN PEWTER by Sarah Shelton-Palmer of Truro College



STUDENT COMPETITION - OPEN First PEWTER HANGER PLAY by Andrea Gomez de la Vara of Buckinghamshire New University *pictured above top right*, Second CRACKED BOWL by Dominic Smyth of Buckinghamshire New University *pictured above bottom right*, Third: 'BRACE YOURSELF' by Annabelle Law of London College of Fashion, Commended: FAKE YOU, BE WHO YOU WANT TO BE! by Leung Ho Yin of London College of Fashion

PEWTER LIVE 2017



STUDENT COMPETITION - DECORATIVE First HYGGE HERB GARDEN by Heidi Carthew of Truro College *pictured on previous page*, Second: ODIN'S DRINKING HORN by Freja Taylor of Truro College *pictured above left*, Third: THE LEANING VASE OF PEWTER by Maria de Klerk of Truro College *pictured above right*.



ALEX & PATRICIA NEISH AWARD — Presented by Mrs Patricia Neish to Sue Rawley (Open competition) for ALHAMBRA PEDESTAL, *pictured above left*.

THE ABPC COMMERCIAL PRIZE — Presented by Sam Williams to Sarah Shelton-Palmer of Truro College for IRIDESCENT CAPTURED IN PEWTER.

CITY & GUILDS — Presented by Michael Osbaldeston to Fleur Grenier (Open competition) for COASTAL RANGE, *pictured above top right*.



MASTER'S AWARD — Presented by the Master, Rod Kent to Chris Histed (Open competition) for A RANGE OF ARROWHEAD PENDANTS, *pictured above right*.

ELLIS OF RICHMOND WINES

wishes the Worshipful Company of Pewterers
every success for Pewter Live 2018

info@ellis-wines.co.uk

www.ellisofrichmond.co.uk



Delivering the future of tin

The International Tin Association (formerly ITRI Ltd) is the only organisation dedicated to supporting the tin industry and expanding tin use.

Our aim is to ensure an innovative, competitive, and sustainable supply chain and market for tin.

We are pleased to support Pewter Live as a demonstration of how the technical properties of tin as pewter can improve quality of life through art.

www.internationaltin.org

01727 875544

St Albans, UK

LIFE'S KITCHEN

A LOVE OF FOOD &
A SENSE OF OCCASION

DELICIOUS FOOD



CORPORATE EVENTS



WEDDINGS



LIVERY EVENTS

For all your event and venue needs, contact our sales team:
020 7248 1163 | info@lifeskitchen.com | www.lifeskitchen.com



PEWTERERS' HALL



CONFERENCE & BANQUETING

Few venues in the capital can rival a Livery Hall for prestige, splendour and an atmosphere of heritage. Ideally situated in the heart of the City and with its flexible suite of air conditioned rooms, Pewterers' Hall is a wonderful backdrop for meetings, conferences and presentations. The Hall has a brand new state of the art Audio Visual suite. Please contact us for more details.

The Worshipful Company of Pewterers
 Pewterers' Hall, Oat Lane, London, EC2V 7DE
 020 7397 8192 beadle@pewterers.org.uk

www.pewterers.org.uk

STATEMENT OF DESIGN RIGHTS

The works shown in the exhibition and in this catalogue are required by the Worshipful Company of Pewterers to be original works, but the Company does not make any warranty in this regard.

Unregistered Rights. All the works shown in this catalogue and exhibited at Pewter Live 2018 at Pewterers' Hall, London EC2V 7DE on 22-24 May 2018 may be protected automatically by Unregistered Design Right for 10 years in the UK as provided by the Copyright, Designs and Patents Act 1988 and for 3 years in Europe as provided by EC Council Regulation No. 6/2002 on Community Designs, subject to fulfilment of the requirements for qualification for UK Design Right protection and/or EU Unregistered Design protection. Unregistered Design rights protect only against copying by a third party.

Registered Rights. EC Council Regulation No. 6/2002 also provides that an application for EU Registered Design may be submitted for any of these designs so exhibited that fulfil the requirements for EU Registered Design protection within 12 months of the date of first exhibition of the design, as long as the exhibition was the first disclosure of the design otherwise than in confidence. The application would receive the filing date of the actual date of submission of the application but the exhibition disclosure will not be taken into account for the purpose of assessing qualification for Registered Design protection. Registered Design protection is also available in the UK only.

Further Details. Advice regarding asserting Unregistered Design Rights and the procedure involved in applying for the Registered Design Rights can be obtained at no charge by the authors of the designs (or with their written permission) by application to The Clerk, The Worshipful Company of Pewterers, Pewterers Hall, Oat Lane, London EC2V 7DE by post or email to clerk@pewterers.org.uk. These details are kindly provided by Kilburn & Strode, 20 Red Lion Street, London WC1R 4PJ.

Copyright A Ruhmann

INDEX OF ENTRANTS

Bailey, Heather - JEWELLERY 37
Bailey, Heather - JEWELLERY 39
Barnard, Rachel - JEWELLERY 39
Beall, Fern - DEC. ARTS 35
Bishop, Rachel - DEC. ARTS 35
Broad, Tracy Alyson - OPEN 20
Broadhurst, Joshua - OPEN-STUDENT 30
Burton, Estelle - OPEN-STUDENT 31
Chen, Yiwen - JEWELLERY 41
Choi, Wai Yan - JEWELLERY 43
Christie, Rhi - JEWELLERY 36
Clement, Gill - OPEN 18
Cobane Stringer, Laura - OPEN 23
Connolly, Helen - DEC. ARTS 34
Dipper, Hannah - OPEN 24
Fang, Wei - JEWELLERY 37
Fang, Wei - JEWELLERY 42
Farquhar, Robin - OPEN 24
Folkard, George - DEC. ARTS 33
Gallegos, Viviana de - OPEN 22
Griffiths, Beverley - OPEN-STUDENT 30
Griffiths, Beverley - JEWELLERY 39
Hao, Yemeng - JEWELLERY 42
Ji, Shanhu - JEWELLERY 38
Ji, Shanhu - JEWELLERY 41
Khan, Mary - DEC. ARTS 35
Krychevska, Maryna - JEWELLERY 40

Lan, Pei- Yu - JEWELLERY 37
Liang, Shu Qi - JEWELLERY 38
Litchfield, Sandra - OPEN 25
Marsters, Rebecca - OPEN 23
Martin, Thistle - DEC. ARTS 33
McIntosh, Ella - OPEN 20
McIntosh, Ella - OPEN 28
Mitchell, Aaron - DEC. ARTS 32
Oevelen, Ceciel van - OPEN-STUDENT 31
Rawley, Sue - OPEN 27
Richards, Carly - OPEN-STUDENT 31
Shin, Dayeong - JEWELLERY 40
Skelton, Claire - OPEN 24
Skinner, Callum - OPEN-STUDENT 29
Stott, Karen - OPEN 19
Stringer, Jim - OPEN 23
Taylor, Freja - OPEN 25
Tyler - Street, Jasmine - DEC. ARTS 34
Tyler - Street, Jasmine - JEWELLERY 41
Vanoost, Nadine - OPEN 21
Vilu, Iris - JEWELLERY 36
Walters, Gina - OPEN 26
Way, Susannah - OPEN 27
West, Sean - DEC. ARTS 33
Wiltshire, Joy M. - OPEN 26
Woods, Trish - OPEN 19



The NATIONAL ASSOCIATION *of* JEWELLERS EDUCATIONAL TRUST

Wishes the best of luck to
all the participants
of Pewter Live 2018

The NAJ Educational Trust is a charity devoted to the provision of funds for education and training. The trust are delighted to sponsor the prizes for the student competition at Pewter Live which offers individuals at the start of their career the opportunity to showcase their skills.

The NAJ represent over 2000 members whose businesses operate in every aspect of the jewellery industry, from jewellery retail, wholesale and design to silverware, machinery and findings. Whether it's legal advice or the latest industry information, we supply our Members with the tools they need to succeed. Our logo is the Mark of Quality and is proudly displayed by our Members.

The trust has provided funding for
all the student prizes.

www.naj.co.uk/centenarytrust

www.naj.co.uk

General enquires: info@naj.co.uk
Education queries: education@naj.co.uk

Head Office:
Federation House, 10 Vyse Street
Birmingham, B18 6LT,
Birmingham Office: 0121 237 1110

London Office:
45 Britton Street,
London, EC1M 5NA
London Office: 020 7613 4445





The Worshipful Company of Pewterers
Pewterers' Hall, Oat Lane, London, EC2V 7DE

Telephone 020 7397 8190

emc@pewterers.org.uk

www.pewterers.org.uk

£6.00