

PEWTER LIVE

2019

THE WORSHIPFUL COMPANY OF PEWTERERS



COPYRIGHT 2019
THE WORSHIPFUL COMPANY OF PEWTERERS

No part of this work may be reproduced, stored in a retrieval system or transmitted in any form or by any means, including copyrighting and recording, without written permission from the copyright owner, application for which should be addressed to The Worshipful Company of Pewterers – Pewter Live. Whilst every effort has been made to verify statements of fact by contributors, including the Students and professional designer entering the competition, no responsibility is accepted for errors or omissions by them.

Editor - The Clerk, Captain Paddy Watson RN

Designed and produced by -
The Assistant Clerk, Eleanor Cross

Printed by Splash Printing -
www.splashprinting.co.uk

CORRESPONDENCE

The Worshipful Company of Pewterers,
Pewterers' Hall, Oat Lane, London, EC2V 7DE
info@pewterers.org.uk
www.pewterers.org.uk

CF DAY Ltd.

Property Management Experts

705 High Road, North Finchley
London, N12 0BT

Tel: 020 8492 7770

Wish the Worshipful Company
of Pewterers every success for

Pewter Live 2019

LEIGH CARR

*Wishes the Worshipful Company of
Pewterers every success for
Pewter Live 2019*

www.leighcarr.co.uk

Working with you to achieve growth

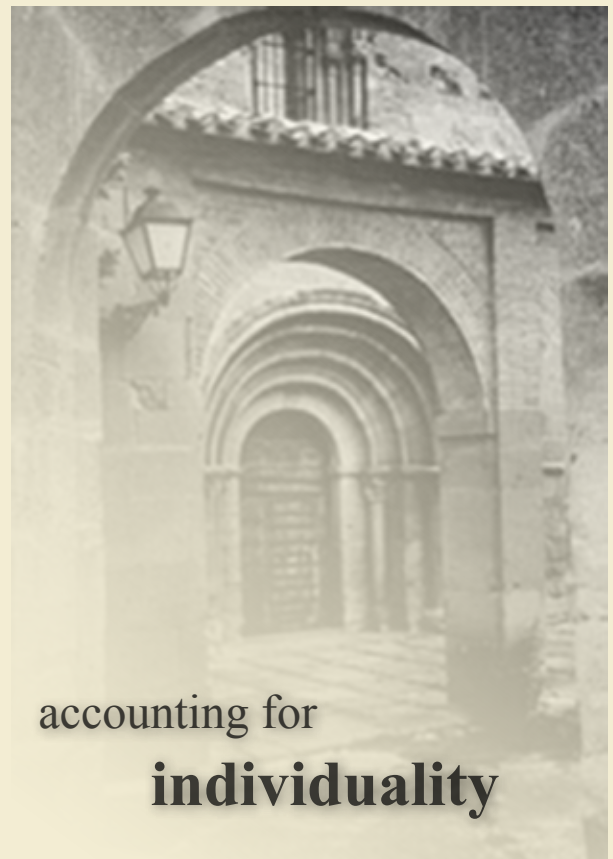
Quite simply, we are committed to helping you grow your business and improve your bottom line. At Leigh Carr we believe the way forward for a business is to identify its positive potentials and develop strategies to realise them.

Leigh Carr, 12 Helmet Row, London, EC1V 3QJ

tel: 020 7566 3900

fax: 020 7566 0002

email: enquiries@leighcarr.co.uk



accounting for
individuality

PEWTER LIVE

2019

CONTENTS

Introduction 3

Sponsors 5

The Company 6

Welcome from the Master 7

Shop at Pewter Live 8

Judges 11

Independent Awards 14

The Open Competition 15

Student Competition:

Open Student 25

Decorative Arts 31

Jewellery 35

Christ's Hospital School 41

Last Year's Winners 42

Statement of Design Rights

and Entrants Index 48

Investment services for charities of every size

At Rathbones, we remain committed to offering a comprehensive investment service to charities of all shapes and sizes.

We are proud to manage £5.3 billion of charitable funds¹, making Rathbones one of the UK's largest charity fund managers². My team and I would be delighted to meet you for an informal discussion about your charity's particular requirements.


For further information, please contact **Ivo Darnley** on **020 7399 0338** or email **ivo.darnley@rathbones.com**


1. As at 31 December 2018.


2. Charity Finance Charity Fund Management Survey 2018.



Rathbones
Look forward

 rathbones.com

 [@Rathbones1742](https://twitter.com/Rathbones1742)

 Rathbone Brothers Plc

The value of investments and income arising from them may fall as well as rise and you might get back less than you originally invested.

Rathbone Investment Management Limited is authorised by the Prudential Regulation Authority and regulated by the Financial Conduct Authority and the Prudential Regulation Authority.

INTRODUCTION

The Worshipful Company of Pewterers has been actively involved with the pewter trade for over six hundred years. Today, one of the principal examples of this involvement is Pewter Live, which has become a noted and influential event held in the very heart of the City in the impressive surroundings of Pewterers' Hall. This year we are pleased to announce that The Right Hon. The Lord Mayor of London, Alderman Peter Estlin will formally open Pewter Live on Tuesday 23 May and that Scott Simpson, Ambassador of the Queen Elizabeth Scholarship Trust, will present the prizes on Thursday 25 May.

Pewter Live showcases exciting and innovative work of both established and student designers. There are two competitions: the Student and the Open. The Student competition has three categories: Decorative Arts, Open (Student category) and Jewellery. Over sixty students and professionals are taking part. The standard this year has been extremely high and we are delighted that more students are using pewter as a medium for design.

This year the Pewter Live sub-committee, chaired by Laila Zollinger, decided on a single concept, PEACE, and that the interpretation and the concept(s) of peace were entirely down to the entrants' inspiration and creativity. The judges are looking for a new slant on traditional items. The brief asked entrants to produce items which would be attractive to well known retailers such as John Lewis and Selfridges. With this in mind, it was important for the designers to not only produce items which would stand out but would be adaptable to large scale production.

Pewter Live is all about encouraging innovation in design in order to exploit pewter to its fullest potential and to produce ideas which will stretch the boundaries of this marvellous metal. We wanted the entrants to bring pewter alive; to demonstrate an understanding of its inherent qualities and its contemporary appeal to consumers of all ages and tastes. During the event professional designers will be selling their pewterware and showcasing new designs (go to page 10-11 for more details).

Pewter Live could not be run without the participation of the colleges and universities. Once again, our thanks go to the tutors and students for their support and the tremendous effort and enthusiasm that goes into the competition. The same applies to the members of the Company and staff who organise the competition.

British Academy of Jewellery www.baj.ac.uk

Buckinghamshire New University www.bucks.ac.uk Tutor: Lyndon Buck

Camberwell College of Art www.arts.ac.uk/colleges/camberwell-college-of-arts

Cardiff School of Art & Design, Cardiff Metropolitan University
www.cardiffmet.ac.uk Tutor: Philippa Lawrence

Duncan of Jordanstone College of Art and Design www.dundee.ac.uk/djcad

London College of Fashion www.arts.ac.uk/fashion Tutor: Husam El Odeh

Truro College www.truro-penwith.ac.uk Tutor: Rebecca Walklett

University Centre Hastings www.sussexcoast.ac.uk Tutor: Ashley Heminway

Delivering more impact to more people

The City & Guilds Group's purpose is to help people and organisations to develop their skills for growth.

We do this by helping people into a job, progress on the job and then move onto the next job.

We reinvest the money our businesses make into further development of high-quality products and services as well as charitable investments that support global skills development.

Building better futures

£250,000 in bursaries awarded every year.

- 70% of recipients said they had become financially independent as a result.

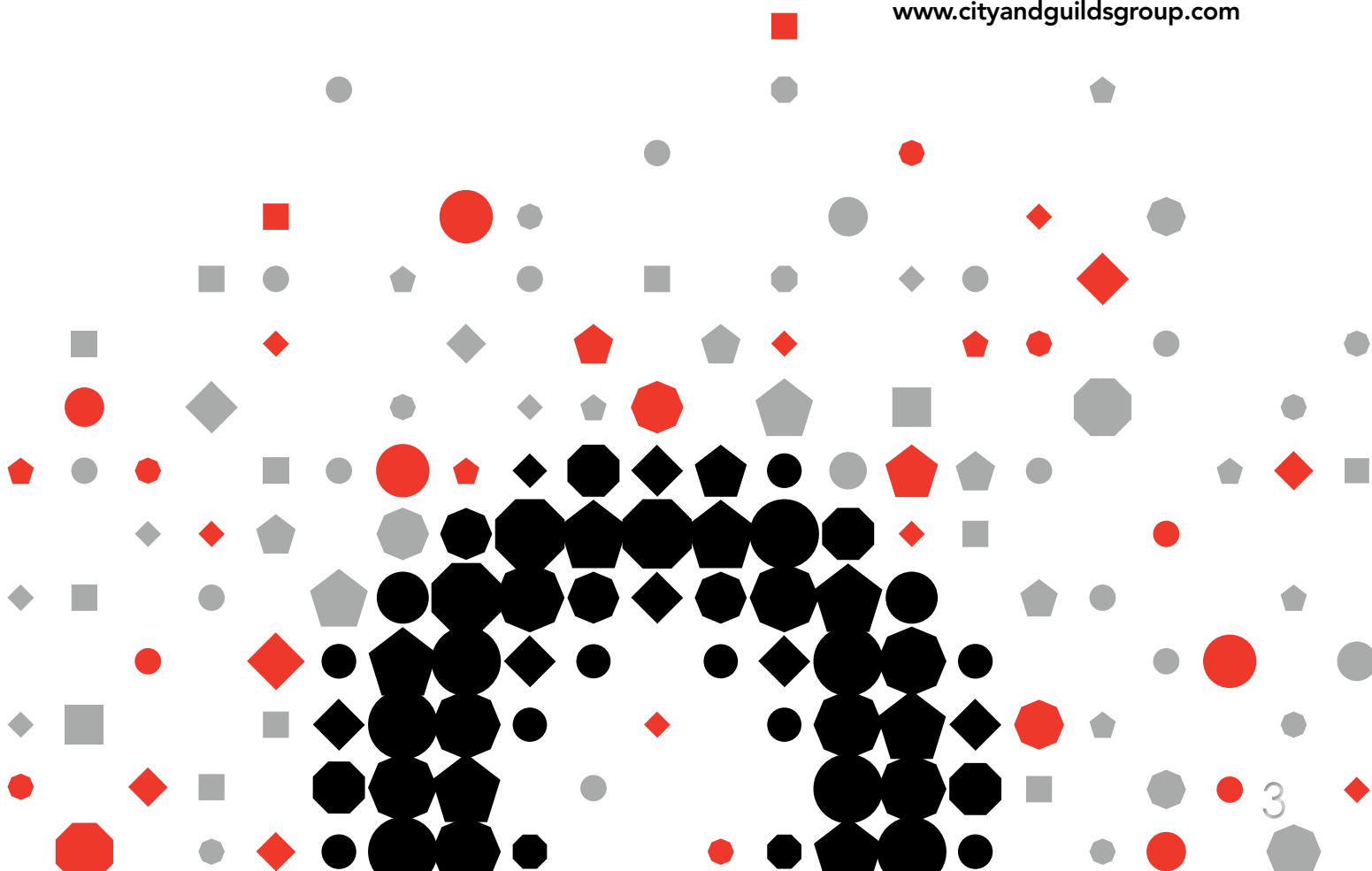
£5 million Skills Development Fund for social projects that help people and communities to create long-term, sustainable change that improves prospects through skills development.

- 4,500+ people directly impacted.
- 18,000+ indirect beneficiaries.
- Fund recipients are 3x more likely to be employed and have a 30% increase in potential earnings in the UK and 300% overseas.

Recognising and encouraging excellence

- Fellowships are awarded to exceptional people who have demonstrated excellence and can be considered role models for their profession.
- 111 organisations have been recognised and celebrated by the Princess Royal Training Awards for providing outstanding training and skills development in the workplace.
- The Prince Philip Medal is awarded annually to a City & Guilds qualified individual in recognition of their outstanding achievements. The most recent recipient was pastry chef Claire Clark.

www.cityandguildsgroup.com



Rathbones
Look forward

LEIGH CARR

City & Guilds Group



DSMETALS



LIFE'S
KITCHEN
A LOVE OF FOOD &
A SENSE OF OCCASION



The National
Association
of Jewellers



SPONSORS

The Worshipful Company of Pewterers would like to thank

A&E Audio Visual - www.aeav.co.uk

Amalgamated Metal Trading Ltd - www.amt.co.uk

CF day Ltd.

City & Guilds - www.cityandguilds.com

Ellis of Richmond Wine - www.ellisofrichmond.co.uk

D S Metals Ltd - www.dsmetals.com

Hopeman Associates

The International Tin Association - www.internationaltin.org

Leigh Carr Chartered Accountants - www.leighcarr.co.uk

The National Association of Jewellers Educational Trust - www.naj.co.uk

Alex and Patricia Neish

Procom Audio Visual Suppliers - www.procom.uk.com

Rathbones - www.rathbones.com

Life's Kitchen- www.lifeskitchen.com

Splash Printing - www.splashprinting.co.uk

Teamwork European Services - www.teamworkexhibitions.co.uk

Laila Zollinger, Wildshaw Ltd.

THE COMPANY

The Pewterers' Company is an ancient and continually evolving City Livery Company with medieval origins as a trade Guild. The earliest documented reference to it is in the records of the Corporation of the City of London dated 1348. The Company's own records date from 1451. It is ranked sixteenth in the order of civic precedence among a hundred and ten Livery Companies.

The first charter, granted by King Edward IV in 1473, empowered the Company to regulate the trade throughout the kingdom, unlike the powers granted to the majority of other Companies, whose jurisdiction was limited to the City and its environs. The Pewterers' Company could seize and destroy pewter below a certain standard, and also impose fines and other penalties on its members for failing to uphold the craft.

Today, the Company has an active and diverse membership, drawn from a wide range of backgrounds. The Company's principal activities are the support of the pewter trade in this country, the management of its charities, supporting the government of the City of London and the Armed Forces of the Crown and maintaining a lively and enjoyable corporate social life, meeting regularly in Pewterers' Hall. The first Hall, completed in



Above: detail of the illuminated design drawn from the Company's new Royal Charter.

1496, was destroyed in the Great Fire. The second Hall, on the same site in Lime Street, which is still owned by the Company, was demolished in 1932. The present Hall was opened in 1961

Pewter Live is a fantastic platform for the entrants and also manufacturers taking part in the shop which operates during Pewter Live. For more details of pewter manufacturers and to find out the results of the competition after the event, go to our website: www.pewterers.org.uk.

The Association of British Pewter Craftsmen also has a detailed website which gives information on the trade. There is also the online publication 'The Pewterer', produced by Court Assistant Alan Williams, with regular articles on the trade and history of pewter. The Company is regularly involved with the media with coverage for Pewter Live and by loaning items to exhibitions.

Contacts:

www.pewterers.org.uk -

for Manufacturers, Pewter Live and Company information

www.britishpewter.co.uk -

The Association of British Pewter Craftsmen

www.thepewterer.org.uk -

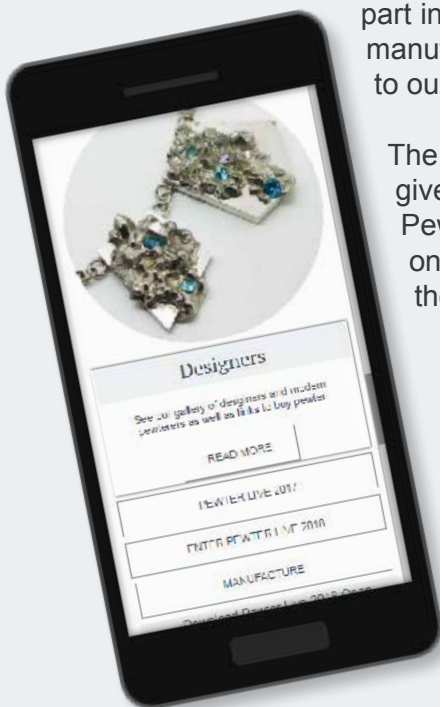
E-magazine trade and history of pewter

www.pewtersociety.org -

Details on pewter marks and collecting

www.qest.org.uk

The Queen Elizabeth Scholarship Trust





A WELCOME FROM THE MASTER PEWTERER

I am delighted to welcome you to the 31st Pewter Live - a wonderful opportunity for the Pewterers' Company, the manufacturers, designers and students to show off the great variety of pewter products and the versatility of the material.

Pewter Live goes from strength to strength and is rightly seen as the jewel in the Pewterers' Company crown.

Whilst the origins of pewter lie sometime during the Bronze Age. Pewter has been regularly used in this country since the Roman times. Its use was at a peak from the Middle Ages until the beginning of the 18th Century when other materials, particularly glazed china ware, were introduced.

The extent of the different uses to which pewter is now put would amaze our predecessors in the Company.



We hope you enjoy the range and quality of the entries for the Student and Open competitions and, indeed, are tempted to buy from the stunning collections of pewter products on sale from the manufacturers who are supporting us here this week.

Pewter has had an enduring appeal over the centuries and it is a privilege to show you the work of the designers and craftsmen of today.

Richard Parsons

Richard Parsons
Master of the Worshipful Company of Pewterers

PEWTER LIVE 2019

SHOP AT PEWTER LIVE

There will be an impressive range of contemporary pewter for sale at Pewter Live 2019.

The Company is proud to support the trade and Pewter Live always strives to provide a platform for manufacturers and designers via the shop which operates during the exhibition. There will be an additional display this year with presentation pieces made by the stall holders. For more details of pewter manufacturers go to our website: www.pewterers.org.uk

In addition to the stall holders items many of the Open and Student entrants items are for sale. If you are interested in purchasing an entrant's item either ask a member of staff or email the entrant directly (refer to the entry in the catalogue).

A E WILLIAMS
info@pewtergiftware.com
www.aewilliamspewter.com



FLEUR GRENIER
design@fleurgrenier.co.uk
www.fleurgrenier.co.uk



GLOVER AND SMITH
ed@gloverandsmith.co.uk
www.gloverandsmith.co.uk



GORDON W ROBERTSON
info@gordonwrobertson.com
www.gordonwrobertson.com





Boadicea The Victorious
LUXURY PERFUME COLLECTION

www.boadiceaperfume.com



PARTNERS IN PEWTER

info@partnersinpewter.co.uk
www.partnersinpewter.co.uk



TRISH WOODS

thwoods@sky.com



REBECCA MARSTERS

rebeccamarsters@yahoo.com
www.rebeccamarsters.uk



GILL CLEMENT

online@gillclement.com
www.gillclement.com





The Bavarian Collection



A chance phone call followed by a grueling 2000 mile road trip has given us the opportunity to bring back to life this lost Pewter Collection.

Hidden for decades in the Baroque Palace of Schloss Hof, in Austria, this stunning set of bronze and iron moulds produced intricate sets of dining wares, not seen for nearly 200 years. The pieces, made in the 1820s, are in an artistic style that harks back to the Renaissance.



Lovingly restored, the moulds are ready for use once more, and when combined with the skills of A E Williams Pewtersmiths, give us a chance to marvel at the stunning craftsmanship of an age passed.



A E Williams
Truly British Pewter

Tel: 0121 643 4756

info@pewtergiftware.com • www.aewilliamspewter.com

We are also on Facebook, Twitter & Instagram

GUEST OF HONOUR

SCOTT SIMPSON

Scott is a passionate advocate for British design and craftsmanship. Currently working as Head of Product at The Cambridge Satchel Company and a charitable Ambassador for The Queen Elizabeth Scholarship Trust.

He began his career at the British brand Bamford & Sons designing and developing accessory and lifestyle collections. He then moved to work as Head of Accessories for the British fashion icon, Vivienne Westwood, with responsibility for creating the leather accessory and shoe collections.

He is now Head of Product at The Cambridge Satchel Company working with the Founder and CEO to create the seasonal collections and leading collaborations with Brompton Bicycles, London Transport Museum and The Royal Opera House.

More recently, Scott has worked with leading luxury British brands including Gieves & Hawkes and Penhaligon's.

Scott co-curated 'A Celebration Of British Design, Craftsmanship, Engineering & Innovation' exhibition with Lord Snowdon. The idea for the exhibition grew from a desire to encourage an appreciation of 'making', not only in terms of traditional craftsmen but also the modern day innovators and engineers who are artists and craftsmen in their own right.

Scott is a charitable Ambassador for The Queen Elizabeth Scholarship Trust helping to raise funds for the charity and raise awareness about excellence in British craftsmanship



CHAIRMAN OF THE PEWTER LIVE SUB-COMMITTEE



LAILA ZOLLINGER - Director of Wildshaw Limited

Laila has been involved in the metal industry all her working life and takes a keen interest in all things tin related, from the mine to finished products.

Pewter has always held a particular fascination for Laila, due to its versatility and beauty, and the Viking's metal of choice can be found in numerous guises in her family home. The promotion of pewter is an ongoing challenge and Laila would dearly like to see pewter regain its prestige and be seen by the public as an equal to gold and silver.

KEITH TYSSEN Designer & Silversmith - Keith Tyssen grew up in Bradfield, a small village in the South Yorkshire/Derbyshire border-country, gaining practical knowledge and learning much about nature and life in the countryside. At sixteen he took up a five year Scholarship at Sheffield College of Art & Crafts. After this followed National service then a scholarship at the Royal College of Art. Keith was offered a f/t Lecturer Appointment at the then Sheffield College of Arts & Crafts from where he retired after 28 years, having served nine years as Head of Design in Sheffield City Polytechnic.



It was a stated requirement during those intensive years in teaching, to give serious time to 'Design & Making' in the workshops, developing both speculative and commissioned works and to include significant pieces both in silver and in other metals. Of course there was additional work and he subsequently and separately rented his own workshop for the serious business of 'Design and Making'. Consequently, several National Museums i/e Cardiff, Aberdeen, Birmingham, Sheffield and the V&A, plus many Religious Institutions, City Livery Companies, Universities and Civic Bodies now hold examples of Keith's works in both Sterling Silver and in other metals.

Since retiring from Higher-Education, Keith has continued his workshop and exhibited throughout the UK and overseas - He has made pieces for individual customers worldwide. He has also enjoyed working with design-colleagues on some larger civic projects, these sometimes resulting in fairly large-scale 'collaborative works' of Public-Art.

Keith is a Liveryman both of the Goldsmiths' Company and the Pewterers' Company of London.

JUDGES



LUKE HUGHES - Hughes is one of the UK's leading furniture designers. He studied History of Architecture at Cambridge University and, over the last 30 years, he and his studio team have concentrated on designing furniture for the world's leading Academic, Institutional and Corporate interiors.

Clients include 80% of the colleges in Oxford and Cambridge as well as recent projects for Yale and Harvard in the USA. He designed the furniture for both the UK Supreme Court and Westminster Abbey (used in the Royal Wedding in 2011) and has just completed all the new liturgical furniture in Ely Cathedral.

HENTY FELLOWES Worked as a PA for advertising agencies before going on to work as a Private PA for individuals. She has also volunteered at The Royal Marsden hospital for six years. Henty has always been very interested in the art world and attends as many exhibitions as possible through from painting to sculpture to photography. Henty had an interest in Pewter having followed her husband trading tin for fifteen years. She has two adult children.





MARC MELTONVILLE Consultant Food Historian

Marc trained in Ceramic history and then went briefly into the media.

He has worked in museums for over 25 years; for much of it for the Historic Royal Palaces, looking at the fascinating stories of food, drink and dining. Over the years he has worked to bring to life the Kitchens of Henry VIII at Hampton Court, the Royal Kitchens at Kew Palace and the Chocolate kitchen of George II. Away from these iconic buildings Marc has worked across the world from projects as diverse as Feast at Stonehenge, taking Tudor pies to Japan and just lately an experiment to brew 250 gallons of 18th century Ale in Pennsylvania. Much of Marc's time is taken up with lecturing, along with TV and Radio appearances.

Now a liveryman of the Pewterers, Marc was found by the company through his study of dining wares. Although happy to investigate pewter from the past, Marc is just as interested in the designs of the present and future.

SAM WILLIAMS was born into a Pewtersmith family. Sam has been living around the world of Pewter manufacturing since the age of five. Officially starting with A E Williams, Birmingham, at the age of seventeen, Sam gradually learnt about the many different processes of working with Pewter, under his father's guidance, making him the 7th Generation of the Company.

Sam has worked with many different influential customers since starting with his family company including the likes of Historic Royal Palaces, The White House, Warner Brothers and Universal Studios. Working his way up to a sales role within the company, Sam is now often seen exhibiting at many different trade shows across the UK, North America and even Japan. His most recent commission includes work under license for The PGA Tour, Famous Grouse, Beverly Knight and Lisa Stansfield.



PRIZES AND PRIZE-GIVING

OPEN COMPETITION - The First Prize will be the Pewterers' Award and £500

STUDENT COMPETITION - In each category: OPEN - STUDENT, DECORATIVE and JEWELLERY
1st Prize: £300, 2nd Prize: £200 3rd Prize: £100

BEST IN SHOW will receive an additional £700 bringing their total prize money to £1,000.
Subject to the judges decision which will be final.

QUEST Ambassador Scott Simpson will present the Prizes at Thursday 23 May.

All winning entrants receive a certificate of entry signed by the Master of the Worshipful Company of Pewterers. We are enormously grateful to the National Association of Jewellers Educational Trust for providing funding for all the student prizes.

In both the Open and Student categories the Company awards prizes which are detailed at the beginning of each category on the following pages.

Additionally the Company is most grateful to the organisations and individuals who give independent awards. These awards help the students to think beyond their single entry to their future career. Commercial appeal and unique design are vital parts of modern trade and Pewter Live aims to provide encouragement at the early stage of many of these designers' careers in pewter and recognition to those established in the trade. The following awards are a vital part of the Competition.

We are especially to *The NATIONAL ASSOCIATION of JEWELLERS EDUCATIONAL TRUST* a charity devoted to the provision of funds for education and training. The Trust have sponsored all of the prizes for the student competition. For more information on the NAJ Educational Trust go to: www.naj.co.uk/charities



The National Association of Jewellers

THE ABPC COMMERCIAL PRIZE - The ABPC (Association of British Craftsman) Council has raised from its members, for a third year, a prize fund for a 'commercial prize'. This award will be awarded specifically to the Pewter Live entry which, in the judges' opinion, has the greatest commercial potential. www.britishpewter.co.uk



Above: Her Royal Highness The Countess of Wessex, with Patricia Neish, awarding the Patricia and Alex Neish Award. prize to Open Entrant Gordon W Robertson.

THE ALEX AND PATRICIA NEISH AWARD
Liverymen Alex and Patricia are long-standing supporters of Pewter Live and have made a wonderful contribution, not only to the current trade, but to the preservation of historical pewter.

They recently granted their collection of fine pewter to the Smith Art Gallery and Museum at Stirling. Their award acknowledges the design and skill of the winner, encouraging excellence and promoting items which will become future collectors' items.

The Neish Collection is on display in the Stirling Smith Art Gallery and Museum
Tues - Sat 10.30am - 5.00pm, Sundays 2.00pm - 5.00pm www.smithartgalleryandmuseum.co.uk

CITY AND GUILDS AWARD
www.cityandguilds.com

City & Guilds was established in 1878 to help individuals develop their talents and abilities for career progression. A global leader in vocational education, they have awarded 20 million qualifications since 2000 alone. The Award is for those who have not only taken a City & Guilds course, but have reached the highest standards of craftsmanship and skill.

OPEN COMPETITION

Pewter Live's mission is to encourage innovation in design in order to exploit pewter to its fullest potential and produce ideas that will stretch the boundaries of this marvellous material. The object is to bring pewter alive; to demonstrate an understanding of its inherent qualities and its appeal and relevance to contemporary consumers of all ages and tastes.

OPEN CATEGORY BRIEF 2019

PEACE -The Committee decided on a single concept and that the interpretation and the concept(s) of peace were entirely down to the entrants inspiration and creativity.

The judges are looking for a new slant on traditional items. The brief asked entrants to produce items which would be attractive to well known retailers such as John Lewis and Selfridges. With this in mind it was important for the designers to not only produce items which would stand out but would be adaptable to large scale production.

The judging panel collectively has huge experience in retail, presentation and artistic interpretation in design. They will be looking not only at the final entry, but the accompanying design statement and packaging, if applicable, which provides vital added value in the current market.

The final judging takes place on Tuesday 21 May and the winners will be announced at the Presentation of Prizes on Thursday 23 May. During the exhibition entrants are encouraged to offer their items for sale.

1st PRIZE: The Pewterers' Award and £500

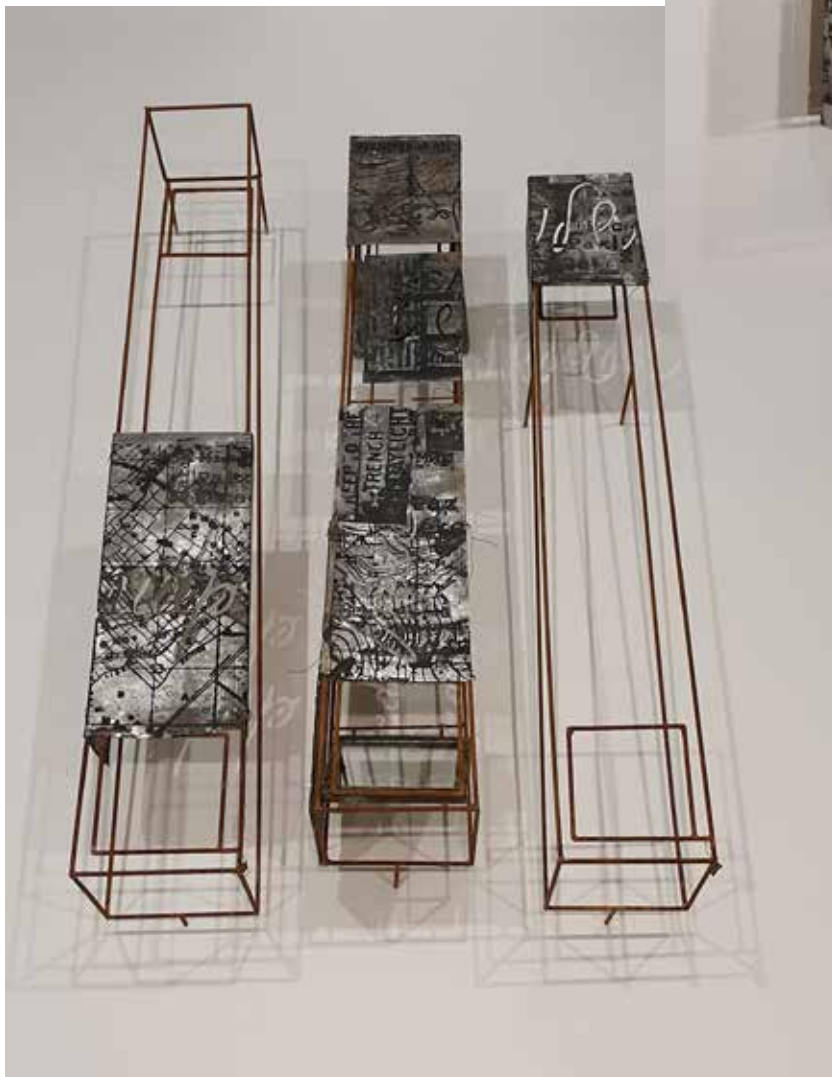
to be awarded at the judges' discretion.
Additionally, Certificates of Commendation will be awarded.

There are also several independent awards to be awarded,
each judged by the donor (see previous page)

Jacky Oliver
jacksoliver@hotmail.com
www.jackyoliver.co.uk

LOOKING FORWARD

Looking Forward takes the form of box periscopes used in the 1st World War. Linear suggestions both literally and metaphorically look forwards, to better future. Bringing together details etched and pierced through the surface, from documents, trench maps, newspaper headlines and the word 'peace' handwritten in a number of languages.



Rebecca Walklett
www.rebeccawalklettmetsmith.co.uk

ONE PEACE : ONE PIECE

Created from a single piece of metal to form a bowl of gentle curves. Intriguing from all angles, the contemplation of this bowl could engender a sense of calm.



Carly Richards
carly3488@gmail.com

SERENITY

This piece has been designed to be hung on a wall, the fish were created using cuttlefish carving and casting. It comprises of a circular mirror with a solid pewter frame, there is a shoal of fish swimming in a decreasing spiral around the outside edge of the mirror. I believe when your eye catches the piece you are instantly pulled into a calming, peaceful head space.

Judith Godden
jlgpewtercraft@gmail.com

PEACE AND REMEMBRANCE

Peace and Remembrance" emerge into the light, from the darkness of war, through ravaged lands reborn with poppies and peace lilies as doves fly to the peace and tranquillity of the island of Iona portrayed by St. Martin's cross. This piece is crafted from fine sheet pewter using repoussé technique.



Sebastian Keller
charon.sebastian@gmail.com

MIGHTIER THAN THE SWORD

Cast pewter pen holder with cork bottom.
Height: 8,5 cm.

One of my first pewter lessons was: don't pour it in water! But I couldn't resist. With care one can avoid explosive reactions and produce unique results. Maybe for peace we can balance other seemingly incompatible things, too.

Susannah Way
info@swayjewellery.com
www.swayjewellery.com

OLIVE BRANCH DISH & OLIVE PICK

This design is inspired by the olive branch as a symbol of peace and encourages the act of sharing. I have used olive wood, as a forming tool and as part of the pick, to echo the source of inspiration. The manufacturing processes include casting and raising. Photograph by Alvin Weetman.



Freja Taylor
f.e.t@icloud.com

AS COMMONLY BIRDS OF A FEATHER WILL FLY TOGETHER

Like birds, people form flocks. The main focus point is a deo-metric dove surrounded by hand carved birds, this representation is a story of how species from all countries can come together and become one. Set to a wooden base and glass cut outs, defining heavenly light.



Joy M. Wiltshire
patjoyw@gmail.com

HOPEFUL PEACE

The art piece has graphic snapshot image elements of war – of loss, tragedy, devastation and madness. The cross cries of great suffering and great hope with the signing of the Treaty of Versailles which ended a world of uncertainty into hopeful peace. The symbol of the dove carries a string of poppies – in remembrance – in hope.



Sue Rawley
suerawley@gmail.com
www.suerawley.com

CIRCLE OF PEACE

I was inspired to create a decorative and focal piece for meditation and reflection. I chose a circular shape due to the circle being a representation of wholeness, eternity and totality. I have embossed and engraved into the pewter Dragonflies, which symbolise peace, harmony and transformation and Butterflies, which symbolise rebirth, endurance and hope. I chose to embellish the Circle of Peace with Rose Quartz, Pearls, blue and purple crystals-colours and crystals that are all associated with serenity and calmness.

Heidi Carthew
heidicarthew@gmail.com
www.heidicarthew.co.uk

DEVERI POT

Nature brings peace- The Deveri Pot was designed to allow plants to thrive without daily watering. The hand cast jesmonite bowl adds colour and contrast against the handcrafted pewter top. This vessel creates the optimum home for plants, with an interesting geometric spout, allowing easy pouring to the bowl below. Photographed by Paul Mounsey



Tracy Alyson Broad
TracyBroadDesign@gmail.com

PURPLE PEACE – MANC METTLE

LUMINAIRE LANTERN – CNC pierced – hand finished fabrication.

The design and concept were influenced by the devastating Manchester Arena Bombing on the 22nd May 2017. The title, Purple Peace, inspired by the purple hearts that were shared on social media, combining the football team colours of Manchester. Manc-Mettle, the courage that the people of Manchester showed in the days and weeks following that tragic night.

The 22 pierced sections that flare out represent each of the precious lives lost that night. Using a candle to enhance this piece, creates a peaceful ambience, a soft warm glow that expands through the piercings, offering an opportunity for a 'pause for thought'.

As I work for the North West Ambulance service, I take 999 emergency calls, and went into work that horrendous night to support my colleagues, and as a Manchester artist and designer I wanted to express my thoughts. Pewter Live 2019 was the perfect opportunity to do this, 'Peace' being the guiding theme this year.



Jim Stringer & Laura Cobane Stringer
infoquirkymetals@gmail.com
www.quirkymetals.com

PEACETIME

A clock, with a pendulum, incorporating imagery associated with "Peace". A ticking clock and the regrowth of nature, in places of former turmoil, are symbolic of a return to peace and calmness. The curvy lines of the clock are like the winding paths we take - striving for peace and tranquillity.



Paige Holohan
Paigeholohan1@gmail.com

PEACE, ACCEPTANCE AND TRANQUILLITY

This collection has been inspired by the philosophy wabi-sabi which expresses the 'Beauty of Imperfection'. One meaning of Peace is 'Freedom from disturbance; tranquillity'. The use and softness of textiles symbolizes calmness and earthiness. Nothing lasts and everything changes/decays. Incorporating simplicity and acceptance of impermanence and imperfection into my concept; I have explored ways to imperfect and deteriorate the metal displaying the bowls simply by hanging them in a peaceful manner.



Caroline Wheaton
cfwheaton@gmail.com
www.carolinewheaton.com

OH, FOR THE WINGS....

Symbols of peace since Greek and Roman times, the dove and olive branch depicted in this decorative sculpture, are cast in pewter and set on rough hewn, white marble. The purity and clarity of the materials used is a nod to the pure choral notes of the Mendelssohn composition after which this original work is named.



Gordon W Robertson
info@gordonwrobertson.com
www.gordonwrobertson.com

PEACE

I have recently been drawing feathers with a view to making a decorative pattern. A little research brought to light the significance of the white feather as a symbol of peace. This symbolism occurs in myth, literature and historical events across many cultures. In Britain during the First World War the white feather's association with peace, was turned into a symbol of cowardice, directed towards the conscientious objectors, many of whom were pacifists; men who refused to take up arms, men of peace. It seemed fitting to further develop and offer this work with feathers to the peace themed Pewter Live 2019.

Rather than scanning real feathers, or the drawings themselves, and then digitally manipulating them, I decided to draw directly onto the metal itself. I used traditional etching techniques: coating the metal with a wax ground and scratching the surface to make marks. A pin vice was my preferred tool for the drawing because, like a pencil, very fine lines can be achieved. I found the action/process very meditative, peaceful and absorbing. Prolonged close study revealed each feather's astonishing beauty.

I was considering the etched drawings as studies to be used on a functional piece; a bowl or a charger. A friend admired them and suggested they stood their own ground as signs, votives if you like, gifts of peace.



OPEN - STUDENT

In this category the students have been given the opportunity to submit entries with the same brief as the professional Open Competition. We hope that this will encourage students and give an introduction to the professional competition.

PEACE -The Committee decided on a single concept and that the interpretation and the concept(s) of peace were entirely down to the entrants inspiration and creativity.

The judges are looking for a new slant on traditional items. The brief asked entrants to produce items which would be attractive to well known retailers such as John Lewis and Selfridges. With this in mind it was important for the designers to not only to produce items which would stand out but would be adaptable to large scale production.

PRIZES: 1st Prize in each section: £300, 2nd Prize in each section: £200, 3rd Prize in each section: £100. Best in show will receive an additional £700.
We are enormously grateful to the National Association of Jewellers Educational Trust for providing funding for all the student prizes.



Alexander Eyles
alexander.eyles@yahoo.com
Buckinghamshire New University
BA Product Design

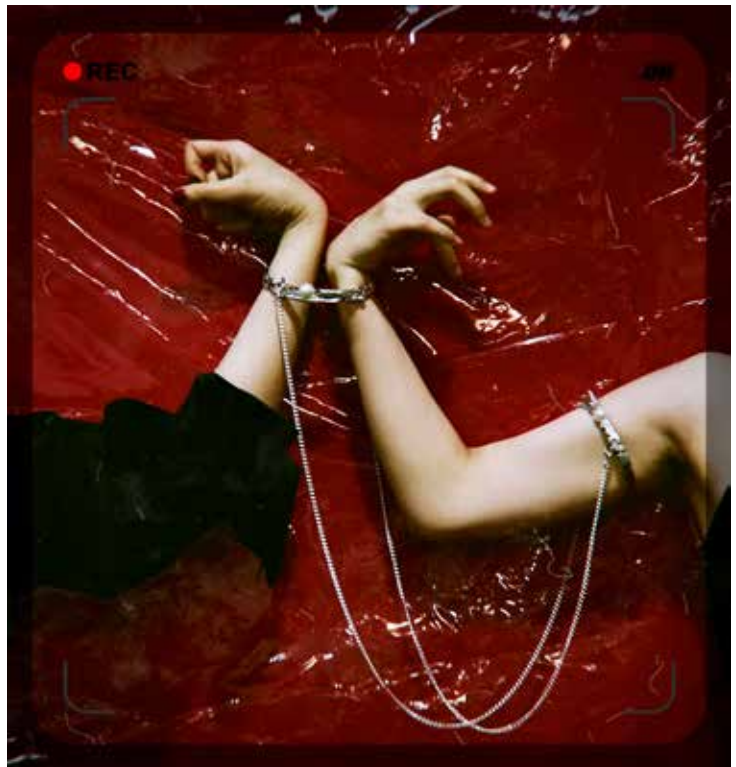
LOVING DOVE CUFF BRACELET

A cuff bracelet produced through the means of repoussé and chasing from a single sheet of pewter. The dove is possibly the most iconic symbol of love and peace and the hand chased style brings this cuff bracelet to life with the caring wings wrapped around the wrist. Photography Enrico Garofalo.

Yuanying Wang
3286362267@QQ.COM
London College of Fashion
Fashion Jewellery

THE PEACEFUL OF LOVE

Love is not only sweet, it is also peaceful. When the passion subsides peace and calm will take its place. Establish an intimate relationship in peace, from a lover to a soul mate. The armband creates a physical contact, as if it is a peaceful and romantic relationship in daily life. The double rings represent the idea that soulmates never separate.



Yue Lang
mylyds@outlook.com
London College of Fashion
Fashion Jewellery

BUBBLE GIRLS

Every time I pass by the playground, I see some children playing with bubbles. They are running and smiling like little angels symbolizing peace. They are innocent, pure and carefree. So I really wanted to record this beautiful moment through my work.



STUDENT - OPEN CATEGORY

Connor Wall
connorwalluni@gmail.com
Buckinghamshire New University
BA Product Design

SILENCE OF THE LAND

Two cities - one has peace, the other stricken with war, the snow that fell in the peaceful city now discoloured with soot from burning buildings. Oil from broken cars has stained the ground, the once polished buildings are crumbling and grey, some stained brown from the dirt of conflict. Photography Enrico Garofalo.



Gregory King
gjjk@hotmail.co.uk
Buckinghamshire New University
BSc Product Design

PEWTER AND CHERRY PEACE BOWL

The bowl is inspired by calming ripples on water. Water is associated with peace and calm and cherry wood is associated with new beginnings. The inset poured pewter rings replicate the radiating ripples of the water, the bowl holds the moment, and the machined pewter rose is the focal point. Photography Enrico Garofalo.

Angela Gillies
agillies@dundee.ac.uk
Duncan of Jordanstone College of Art and Design, University of Dundee
B.Des (Hons.) Jewellery and Metal Design

CONTOURS OF PEACE

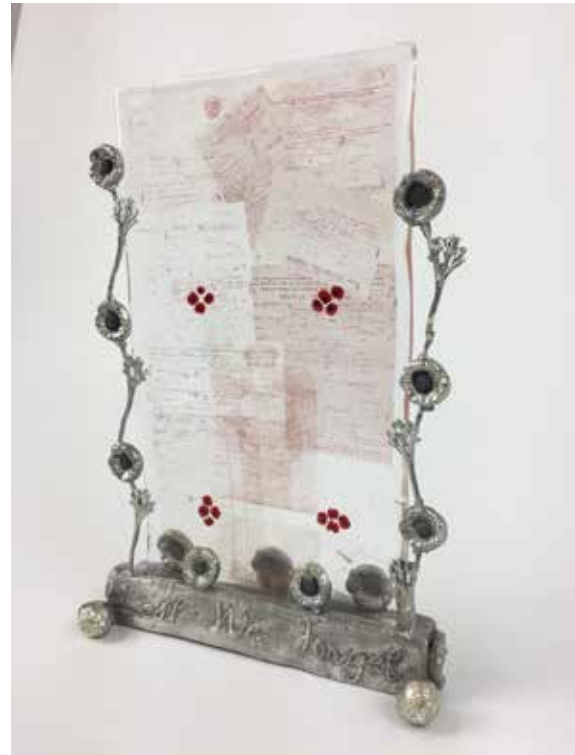
'Contours of Peace' represents the quiet and soothing landscape of the Angus countryside. The texture of the pewter was created through the process of cuttlefish casting, and represents the contour lines of a map. A gentle stroking of the pendant stimulates inner peace and calm within the wearer.



Kay Ford
kayjford0@gmail.com
University Centre Hastings
BA Honours Designer Maker

REMEMBRANCE

This piece is in memory of the fallen soldiers of World War 1 and the peace for which they fought. Fallen soldiers photographs and war records have been fused onto glass and set in a pewter base, surrounded by a poppy field.



Yahui Meng
y.meng1220161@arts.ac.uk
London College of Fashion
BA(Hons) Fashion Jewellery

THE PEACE OF BEING ANONYMOUS

For this project, I researched some reversible methods that can make people feel peaceful in heart. The project is inspired by the feeling of being peaceful. It comes from a sense of security that protects privacy. When people move to a new place, they can't change their addresses immediately. The letters they left became junkmail to new residents. But they won't be worried about leaving these letters, no one knows where these former guests live now. People are unable to match a name with their face, our anonymity allows us to do that. This makes people to blend in. I select the elements of postmark, "private and confidential" on the letters. These marks remind people the things inside a letter belong to a specific person. When people wear it, they become to a symbol that protects your privacy.



STUDENT - OPEN CATEGORY

Miriam Manca
miriam.manca@outlook.com
Buckinghamshire New University
BA Product Design

INNER PEACE PEWTER MASSAGE STONES

Three smooth, sand cast pewter massage stones that can be heated up or used cold. The shapes are derived from existing massage stones and developed in form, weight and size to apply differing pressures to pressure points on one's body, helping an individual to restore balance and reach inner peace. Photography Enrico Garofalo.



Ruth Atkins
brownbear73@hotmail.com
Truro College
FdA Silversmithing and Jewellery

WAR AND TEA

I was originally inspired by pewter's historic use in affordable serving ware. The historic link between war and tea is fascinating, and led to the surface pattern being developed from dazzle ship designs, with a peacetime era Art Deco twist. The small vessels can be used either for milk and sugar, or as drinking vessels to share tea with a friend...or to make peace with the enemy!

Lucy Vu
lucyvu0116@gmail.com
Buckinghamshire New University
course

HANDSHAKE BROOCH

Whilst working with pewter I found it malleable and pliable, inspiring me to represent a handshake, signifying peace, trust and friendship which require flexibility to succeed. A handshake signifies an agreement is adhered to which in turn means peace, if everyone shook hands the world might be a better place. Photography Enrico Garofalo.



Susan Avis Jones
sue.marklye@btinternet.com
University Centre Hastings
BA (Hons) Designer Maker

MAERCHLAEW WOOD

Undisturbed, the bark of slowly dying and long dead trees, native to the ancient woodlands in which they rest, are hosts to a myriad of seen and unseen organisms. This site specific work showcases the unique ability of pewter to not only replicate the pattern and texture of the tree bark, but also to mimic the formation of fungi and lichens that will bloom and feed on the detritus.



Chong Ue Kiu Kelly
kelly17chong@gmail.com
London College of Fashion
Fashion Jewellery

PEACE

The project is inspired by an observation of people wearing headphones on the tube. They enjoy the peaceful moment by themselves by listening to music. It is quite relaxing to stay in a little world without talking to others or being disturbed by anyone since we can stay alone and meditate.



Katy Bryant
katybryant27@yahoo.com.sg
University Centre Hastings
BA (Hons) Designer Maker

AFFIRMATION PINS

Having a peaceful mantra to live by can motivate and inspire you. This Brail pin allows both male and female, visually and non-visually impaired wearers to engage with an uplifting message through tactile words and the warmth of pewter. This collection can be extended into other wearable objects.



DECORATIVE ARTS

The students were asked to design a pewter item for the gift market. The design could be either functional, fun or merely decorative. We wanted them to look at the current market, bearing in mind retailers such as John Lewis or Heal's.

The judges are seeking originality, beauty and innovation. Students were asked to consider what people need/want at the moment and to think about lifestyle trends. More and more people are entertaining at home: a wine chiller, a table centre piece, a modern take on the traditional vase, etc.

They also had to consider the visual benefits derived from the integration and use of colour to complement and enhance the pewter, using additional materials as appropriate. The final item had to be made predominantly of pewter. We also asked that consideration should be given to the possibility and practicality of large-scale production.

PRIZES: 1st Prize in each section: £300, 2nd Prize in each section: £200, 3rd Prize in each section: £100. Best in show will receive an additional £700.
We are enormously grateful to the National Association of Jewellers Educational Trust for providing funding for all the student prizes.

Chloe Nicole Rowland
chloerowland@gmail.com
Truro College
FdA Silversmithing &
Jewellery Making



Feather Trinket Box

This piece is inspired by shapes formed in the beautiful Barbara Hepworth Museum in St Ives and the unique textures found in nature's feathers that I find on Cornish walks in the countryside. The piece is etched to portray these textures, with a leather lining to keep precious jewellery safe.

Faye McTavish
fm145886@truro-penwith.ac.uk
Truro College
FdA Silversmithing &
Jewellery Making



ORNAMENTAL SPOONS

These two ornamental spoons are inspired by organic forms, using the method of water casting to create unique shapes which were then soldered together to create the handle and hollowing out the bowls by hand.

DECORATIVE



Kay Ford
kayjford0@gmail.com
University Centre Hastings
BA Honours Designer Maker

CRUSHED PEWTER MIRROR

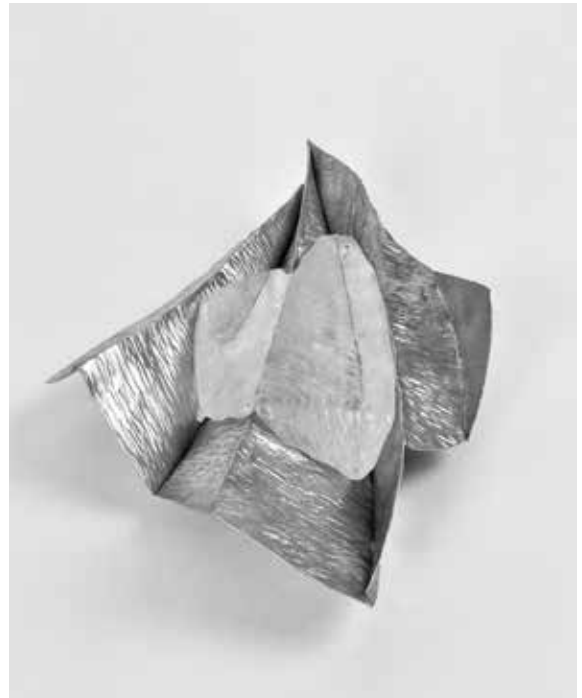
This piece was created using a technique developed through experimentation, that enabled me to pour Molten Pewter directly onto a warmed mirror. The Pewter gently hugs, and flows around the mirror, creating a natural frame.

STUDENT - DECORATIVE CATEGORY

Lisa Hassan
Lisa.h1997@hotmail.com
University Centre Hastings
BA (Hons) Designer Maker

FLOW

Landscape is my inspiration for this piece. Water expands and shatters rocks as it flows through, creating scars in the landscape. Using the malleability of Pewter to my advantage, I created fold form techniques to replicate the natural corrugation made by water as it cuts through rock.



Maria Andrews
ma153215@truro-penwith.ac.uk
Truro College
FdA Silversmith and Jewellery

THE DEMISE OF A PLANET

The inspiration for this piece comes from the environmental fragility of our planet. We are seeing species becoming extinct due to climate change and pollution at an ever increasing rate which will negatively impact the planet for our future generations.



Rhi Christie
Rhichristiedesign@outlook.com
Cardiff School of Art & Design
Artist Designer: Maker

SEEDS

This project challenges the idea of mass-production versus making by hand, putting focus on the uniqueness of each piece within a mass collection. I have chosen to celebrate seeds to show how important beginnings are, focusing on small and often forgotten origins of plant life.





Siobhan Boyle
siobhan.boyle3@btinternet.com
Truro College
Silversmithing and Jewellery

THE IVY BOWL

My bowl is inspired by my love of nature and keen interest in Celtic cultural history. The ivy leaves are cast in Pewter and look to capture the life form of that I see in ivy combined with the ancient Celtic meaning of ivy that stands for 'growth' 'renewal' and 'friendship'.



Tracy-Jane Stagg
thethriftypixie1@aol.co.uk
Truro College
FdA Silversmithing and Jewellery

PENDENHAR

Pendenhar is a celebration of the bounties of Cornwall. Taking my inspiration from the wealth of the land, the sea, its colours, textures, taste and smell. The Cornish wild edibles collection combines native Elm and pewter to create beautiful and functional items for the home.



STUDENT - JEWELLERY CATEGORY

JEWELLERY

Today's High Street is awash with jewellery and accessories, few of which are made of pewter. We challenged the students to come up with designs which could promote pewter either as an accessory or part of the total look. Taking this into account, they were asked to design a piece or range of jewellery, which would appeal to young people to complement today's free-form fashion. Similarly to the Decorative Arts category, students were encouraged to keep the commercial price relative to the intended buyer.

PRIZES: 1st Prize in each section: £300, 2nd Prize in each section: £200, 3rd Prize in each section: £100. Best in show will receive an additional £700.

We are enormously grateful to the National Association of Jewellers Educational Trust for providing funding for all the student prizes.

Alexander Eyles
alexander.eyles@yahoo.com
Buckinghamshire New University
BA Product Design

FLYING DOVE PENDANT

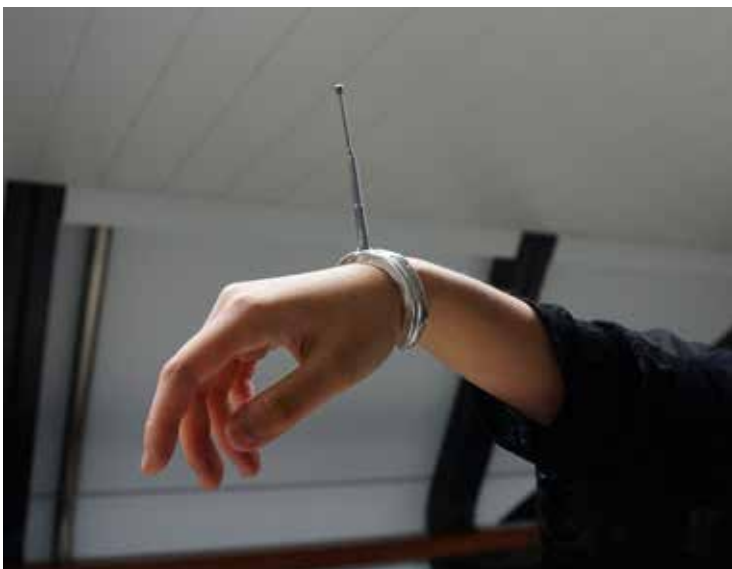
This pewter dove pendant was cast in a cuttlefish shell then hand finished and polished to bring out the lustre and shine. The ripples and matt indentations from the cuttlefish shell contrast with the polished faces of the piece, suggesting feathers on the dove, a universal symbol of peace. Photography Enrico Garofalo.



Chong Ue Kiu Kelly
kelly17chong@gmail.com
London College of Fashion
Fashion Jewellery

CONFLUENCE

It is all about connection. There is no doubt to communicate with one another by sending messages and calling by phones in this day and age we need a strong "antenna". In this case so as to give quick response and receive the latest news.



Maria Andrews
ma153215@truro-penwith.ac.uk
Truro College
FdA Silversmith and Jewellery

LOVE AND HATE

Tattoos are a huge fashion trend and the inspiration for my jewellery comes from this craze and my love of 1950's cult horror films. Instead of having permanent tattoos of the words LOVE/HATE etc. inked on your body, you can make a statement with a contemporary piece of jewellery.



Jessie Zixi Han
jessiehanzixi@hotmail.com
London College of Fashion
Fashion Jewellery

LIPSTICK RING

The topic of beauty, especially makeup, is an important factor in creating the ideal of beauty. The lipstick shape I have created here symbolises beauty. It is mixed media, brass and pewter, a creative way to design a well-polished playful interesting feature.

STUDENT - JEWELLERY CATEGORY

Fan Yu Lin
1738454737@qq.com
Camberwell College of Art
Three Dimensional Design

WHERE IS HOME

This piece was inspired by a scene of refugees travelling on boat from their home country to Europe. Raising people's awareness about the displacement issue by wearing the ring as an every day decoration.



Faye McTavish
fm145886@truro-penwith.ac.uk
Truro College
FdA Silversmithing & Jewellery Making

RUNNING WATER

This set is inspired by movement in nature, using water casting to create organic forms which I then turned into a set of earrings and a ring that is to be worn on the middle finger so that it lays across all of the fingers, looking like flowing water.

Gabriella Batchelor
gabriella.alicia.b@gmail.com
British Academy of Jewellery
Level 3 apprentice Goldsmith

PORTE-PARFUM

Smell, the strongest sense, impacts brain activity using familiar scents, bringing peace and influencing memories. "The beauty of fragrance is that it speaks to your heart."- Elizabeth Taylor. The wearable perfume bottle is introduced with any calming aroma desired, to induce feelings to the carrier. (Example- Rose, Mint, Lavender or Lemon).



Tingting Guo
t.guo1@arts.ac.uk
London College of Fashion
Fashion Jewellery Design (BA)

LISPS ACCESSORY, RING AND EARRING

In general, women wear makeup for beauty. Men wear armour for protection. In my experience, I am in a good mood if I have makeup on when I go out. But I feel very insecure if my face is without makeup. Makeup becomes an armour for me. Before the early Tang Dynasty women were not allowed to show their faces when they went out. But it has changed when the Wuzetian appeared. In that period women gained more freedom and creativity. They have created a variety of novel makeup. I extracted the elements of the Tang Dynasty makeup and armour to design my jewellery. Jewellery can make people feel safe and feel better when they wear the jewellery.



Hanying Hu
h.hu0220172@arts.ac.uk
London College of Fashion
Fashion Jewellery

HARMONY

Exploration of the contradictory and harmonic relationship between obedience and resistance, restraint and freedom is the design theme of this piece. On the road of growth, people always split in self-affirmation and self-denial, which are repeated after splitting. We grow up with this contradiction and adjust toward a harmonic equilibrium.

STUDENT - JEWELLERY CATEGORY

Fahmida Khan
khanraka85@yahoo.com
Buckinghamshire New University
BA Product Design

SUMMER BLOOM

Peace, power, positivity all represented by a sunflower and its resemblance to the sun. Summer Bloom is inspired by Asian & Afghan tales; wearing a necklace near the heart maintains and strengthens emotions, the stones bind us with our eternal powers and are a potent restraint against effects of evil charms. Photography Enrico Garofalo.



Petra Thomas
willis.lake@icloud.com
Truro College
FdA Silversmith and Jewellery

NDEBELE INSPIRED EARRINGS

Looking into conflict and art destroyed by chaos of war, the Ndebele tribe of South Africa stood out to me. The female art of decorating homes has been inspired by the shapes of these earrings. Esther Mahlangu is the last woman creating authentic designs. Her work will live on around the world.

Debbie Allen
da18747@truro-penwith.ac.uk
Truro College
FdA in Silversmithing and Jewellery

PEACE, LOVE AND PARTNERSHIP

This dove inspired necklace has been crafted using the traditional wax carving process. The wax models have been cast in pewter and suspended on a sterling silver chain. To offer versatility, you can adjust the length of the chain, which alters the position of the doves and central heart shape.



PEWTER LIVE 2019

Xinyue Dong
racheldong0709@gmail.com
London College of Fashion
Fashion Jewellery

EASY! WHY ARE YOU NOT BREATHING?

The combination of a balloon, a net and pewter fingers is a breathing controller. It mimics the feeling of an anxiety attack, which most of us might experience in response to an acute stress or any sense of insecurity. Don't forget to breath, it is always the first step to sidestep the anxious feeling and to find your true inner peace.



Rhi Christie
Rhichristiedesign@outlook.com
Cardiff School of Art & Design
Artist Designer: Maker

CUSTOM LAPEL PINS

These custom lapel pins were designed and made for specific clients, each pin design is unique to that person. Hand carved in a block of plaster, the design is then cast in pewter and finished to a high standard. Orders through Rhichristiedesign.com contact page.

Yue Cao
akiko1ko2ko@gmail.com
London College of Fashion
BA(Hons) Fashion Jewellery

PILLOW LOVE

People do need love and care to have peace and balance of mind. This collection has a story-telling structure of how a close relationship starts and changes. The two broken pillow brooches represent how a couple meet and divide. The earrings show how they bond and the wedding ring gives a definition of how they loved.



CHRIST'S HOSPITAL SCHOOL

Although Pewter Live issues briefs to professional designers and University/College level students we are also keen to encourage pewter making in Secondary Schools. The students of Christ's Hospital School in West Sussex have produced a stunning collection of pewter. Led by their teacher of Design and Technology, Rebecca Watson, they have entered their items to be displayed during the Pewter Live exhibition.



Christ's Hospital was founded by King Edward VI in 1552, the original site on Newgate Street, London before moving to Horsham in 1902. Today we are a full boarding school for boys and girls from 11 to 18 years old and continue to have strong links with the City of London. In the sixth form students can choose Product Design at A level and spend the first year honing their practical and visual communication skills.



The first project the students engage with encourages the students to explore Art Deco researching products from buildings to furniture. Developing this into an aesthetic specification, the students can start to experiment with a range of ideas for their Art Deco inspired pewter jewellery piece. They use CAD modelling, plasticine modelling, tracing paper and traditional sketching to develop and refine their final ideas. To realise their outcomes, we use laser cut MDF to create a model which is cast in silicone. This silicone mould is then used to cast their final design in pewter before filing and polishing.



The outcomes this year show the students have a good eye for key aesthetic elements of the Art Deco movement. A common theme this year is using symmetry and geometric shapes to create their designs that can be seen in a number of the final pieces. Remi has utilised the layers in a unique way, having the majority of the elongated diamonds start from the centre. Ayo has combined her geometric shapes in a distinct way, showing that keeping a design simple can have a good effect. Caitlin has a good understanding of the casting process as her final piece has a patterned indent on the surface of her piece.



PEWTER LIVE 2018

LAST YEARS WINNERS AND HIGHLIGHTS

2018 marked the 30th anniversary of Pewter Live. In homage to this, the Committee set the challenge of producing an item, or range of items, that evoke a celebration, be it a wedding, christening, winning a competition or gaining a degree. We had a wide range of innovative designs and the student competition attracted entrants from nine universities.



OPEN COMPETITION
WINNER

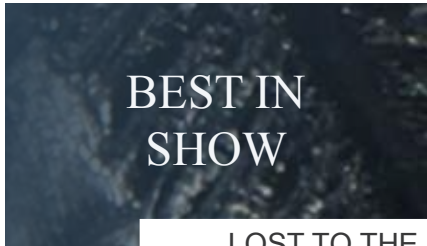
“BUNCH” BOWLS
Jim Stringer &
Laura Cobane Stringer
www.quirkymetals.com



OPEN CATEGORY - COMMENDED

Below: 'THE GAME OF LIFE AND DEATH' by Freja Taylor, SUPER BOWLS 2018 by Hannah Dipper & Robin Farquhar and PARTY CAKE CANDLE HOLDERS by Viviana de Gallegos.





LOST TO THE SEA
Estelle Burton
University Centre Hastings
BA Designer Maker



STUDENT COMPETITION: JEWELLERY First: UNDER THE SKIN earrings and brooch by Shanhu Ji of London College of Fashion *pictured below right*. Second: FASHION JEWELLERY (age and generation)' by Dayeong Shin of London College of Fashion. Third: ONE OCEAN' *pictured below left*, by Rhi Christie of Cardiff School of Art & Design. Commended: CHAIN OF THE SOVIET OFFICE by Iris Vilu of London College of Fashion, CRASH! CRASH!, *pictured bottom left*, by Pei-Yu Lan of London College of Fashion and UNDER THE SKIN ring by Shanhu Ji London College of Fashion.



STUDENT COMPETITION: OPEN First: Lost to the Sea by Estelle Burton of University Centre Hastings *pictured top of the page*. Second: CONSTELLATION by Joshua Broadhurst of Buckinghamshire New University. Third: TO HAVE AND TO HOLD by Ceciel van Oevelen of Truro College, *pictured above right*. Commended: REDISCOVERED by Carly Richards of Truro College.

PEWTER LIVE 2018



STUDENT COMPETITION: DECORATIVE ARTS First PEWTER/WALNUT: LIFE/WORK USB STICK by Aaron Mitchell of Buckinghamshire New University *pictured above right*. Second: TESSELLATING SNOWFLAKE COASTERS, by Sean West of Buckinghamshire New University. Third: PEWTER CAST WOODLAND CHANDELIER by Jasmine Tyler - Street of Truro College. Commended: PEWTER PAPERWEIGHT by George Folkard of Buckinghamshire New University, *pictured above left*, and WABI SABI LAMP by Rachel Bishop of Truro College.



ALEX & PATRICIA NEISH AWARD – Presented by Mrs Patricia Neish to Iris Vilu of London College of Fashion for CHAIN OF THE SOVIET OFFICE, *pictured above left*.

CITY & GUILDS – Presented by Michelle O'Brien to Viviana de Gallegos for PARTY CAKE CANDLE HOLDERS

THE ABPC COMMERCIAL PRIZE – Presented by Chris Hudson to Joint Winners George Folkard of Buckinghamshire New University for PEWTER PAPERWEIGHT and Nadine Vanoost for GALA ZAHRA

Delivering the Future of Tin



The leading source of tin industry data



Taking responsibility for a better future



Driving future tin uses



Information
Co-operation
Communication

www.internationaltin.org

LIFE'S KITCHEN

A LOVE OF FOOD &
A SENSE OF OCCASION

DELICIOUS FOOD



CORPORATE EVENTS



WEDDINGS



LIVERY EVENTS

For all your event and venue needs, contact our sales team:
020 7248 1163 | info@lifeskitchen.com | www.lifeskitchen.com



PEWTERERS' HALL



CONFERENCE & BANQUETING

Few venues in the capital can rival a Livery Hall for prestige, splendour and an atmosphere of heritage. Ideally situated in the heart of the City and with its flexible suite of air conditioned rooms, Pewterers' Hall is a wonderful backdrop for meetings, conferences and presentations. The Hall has a brand new state of the art Audio Visual suite. Please contact us for more details.

The Worshipful Company of Pewterers
Pewterers' Hall, Oat Lane, London, EC2V 7DE
020 7397 8192 beadle@pewterers.org.uk

www.pewterers.org.uk

STATEMENT OF DESIGN RIGHTS

The works shown in the exhibition and in this catalogue are required by the Worshipful Company of Pewterers to be original works, but the Company does not make any warranty in this regard.

Unregistered Rights. All the works shown in this catalogue and exhibited at Pewter Live 2019 at Pewterers' Hall, London EC2V 7DE on 21-23 May 2019 may be protected automatically by Unregistered Design Right for 10 years in the UK as provided by the Copyright, Designs and Patents Act 1988 and for 3 years in Europe as provided by EC Council Regulation No. 6/2002 on Community Designs, subject to fulfilment of the requirements for qualification for UK Design Right protection and/or EU Unregistered Design protection. Unregistered Design rights protect only against copying by a third party.

Registered Rights. EC Council Regulation No. 6/2002 also provides that an application for EU Registered Design may be submitted for any of these designs so exhibited that fulfil the requirements for EU Registered Design protection within 12 months of the date of first exhibition of the design, as long as the exhibition was the first disclosure of the design otherwise than in confidence. The application would receive the filing date of the actual date of submission of the application but the exhibition disclosure will not be taken into account for the purpose of assessing qualification for Registered Design protection. Registered Design protection is also available in the UK only.

Further Details. Advice regarding asserting Unregistered Design Rights and the procedure involved in applying for the Registered Design Rights can be obtained at no charge by the authors of the designs (or with their written permission) by application to The Clerk, The Worshipful Company of Pewterers, Pewterers Hall, Oat Lane, London EC2V 7DE by post or email to clerk@pewterers.org.uk. These details are kindly provided by Kilburn & Strode, 20 Red Lion Street, London WC1R 4PJ.

Copyright A Ruhmann

INDEX OF ENTRANTS

Allen, Debbie - **JEWELLERY** 39
Andrews, Maria - **DEC. ARTS** 33
Andrews, Maria - **JEWELLERY** 36
Atkins, Ruth - **OPEN-STUDENT** 29
Batchelor, Gabriella - **JEWELLERY** 37
Boyle, Siobhan - **DEC. ARTS** 34
Broad, Tracy Alyson - **OPEN** 21
Bryant, Katy - **OPEN-STUDENT** 30
Cao, Yue - **JEWELLERY** 40
Carthew, Heidi - **OPEN** 21
Christie, Rhi - **DEC. ARTS** 33
Christie, Rhi - **JEWELLERY** 40
Dong, Xinyue - **JEWELLERY** 40
Eyles, Alexander - **JEWELLERY** 35
Eyles, Alexander - **OPEN-STUDENT** 25
Ford, Kay - **DEC. ARTS** 32
Ford, Kay - **OPEN-STUDENT** 28
Gillies, Angela - **OPEN-STUDENT** 27
Godden, Judith - **OPEN** 18
Guo, Tingting - **JEWELLERY** 38
Han, Jessie Zixi - **JEWELLERY** 36
Hassan, Lisa - **DEC. ARTS** 33
Holohan, Paige - **OPEN** 23
Hu, Hanying - **JEWELLERY** 38
Jones, Susan Avis - **OPEN-STUDENT** 30
Keller, Sebastian - **OPEN** 18
Kelly, Chong Ue Kiu - **JEWELLERY** 35

Kelly, Chong Ue Kiu - **OPEN-STUDENT** 30
Khan, Fahmida - **JEWELLERY** 39
King, Gregory - **OPEN-STUDENT** 27
Lang, Yue - **OPEN-STUDENT** 26
Manca, Miriam - **OPEN-STUDENT** 29
McTavish, Faye - **DEC. ARTS** 32
McTavish, Faye - **JEWELLERY** 37
Meng, Yahui - **OPEN-STUDENT** 28
Oliver, Jacky - **OPEN** 16
Rawley, Sue - **OPEN** 20
Richards, Carly - **OPEN** 17
Robertson, Gordon W - **OPEN** 24
Rowland, Chloe Nicole - **DEC. ARTS** 31
Stagg, Tracy-Jane - **DEC. ARTS** 34
Stringer, Jim - **OPEN** 22
Stringer, Laura Cobane - **OPEN** 22
Taylor, Freja - **OPEN** 19
Thomas, Petra - **JEWELLERY** 39
Vu, Lucy - **OPEN-STUDENT** 29
Walklett, Rebecca - **OPEN** 17
Wall, Connor - **OPEN-STUDENT** 27
Wang, Yuanying - **OPEN-STUDENT** 26
Way, Susannah - **OPEN** 19
Wheaton, Caroline - **OPEN** 23
Wiltshire, Joy M. - **OPEN** 20
Yu Lin, Fan - **JEWELLERY** 37



The NATIONAL ASSOCIATION of JEWELLERS EDUCATIONAL TRUST

Wishes the best of luck to
all the participants
of Pewter Live 2019

The NAJ Educational Trust is a charity devoted to the provision of funds for education and training. The trust are delighted to sponsor the prizes for the student competition at Pewter Live which offers individuals at the start of their career the opportunity to showcase their skills.

The NAJ represent over 2000 members whose businesses operate in every aspect of the jewellery industry, from jewellery retail, wholesale and design to silverware, machinery and findings. Whether its legal advice or the latest industry information, we supply our Members with the tools they need to succeed. Our logo is the Mark of Quality and is proudly displayed by our Members.

The trust has provided funding for
all the student prizes.
naj.co.uk/charities

naj.co.uk

Education queries: education@naj.co.uk

Head Office:
Federation House, 10 Vyse Street
Birmingham, B18 6LT,
Birmingham Office: 0121 237 1110
General enquires: info@naj.co.uk



The National
Association
of Jewellers



The Worshipful Company of Pewterers
Pewterers' Hall, Oat Lane, London, EC2V 7DE

Telephone 020 7397 8190

info@pewterers.org.uk

www.pewterers.org.uk

£6.00