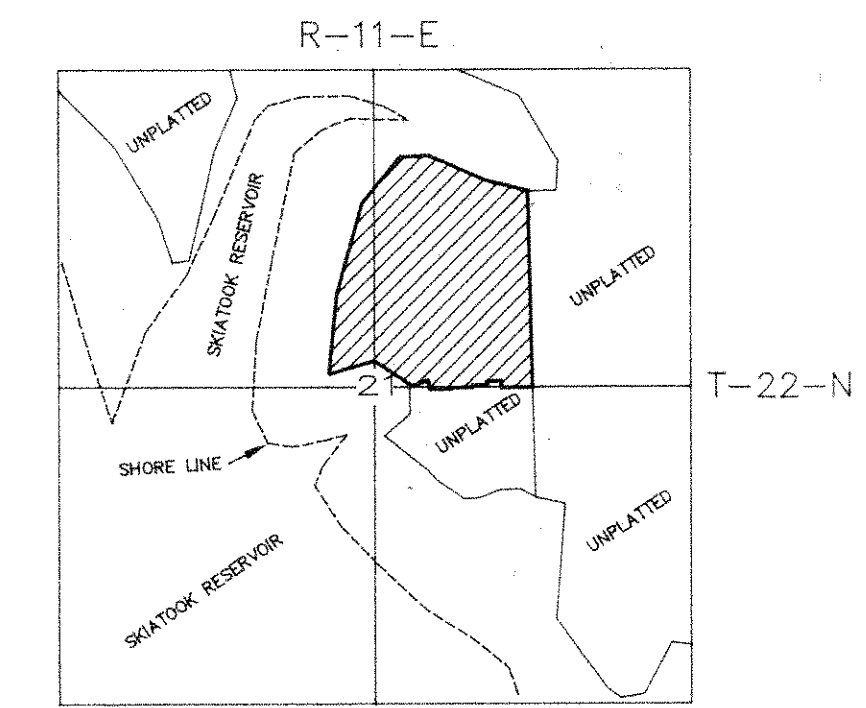


CRYSTAL BAY ESTATES

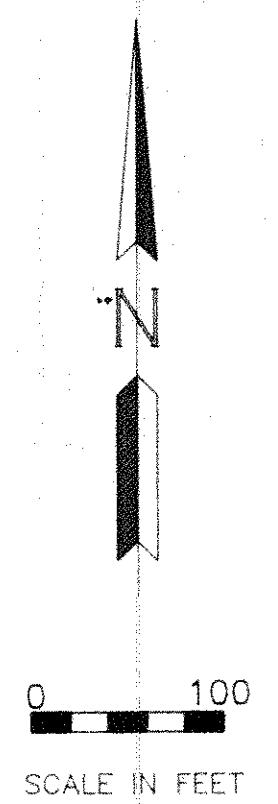
(AN AMENDED PLAT OF CRYSTAL BAY SUBDIVISION)

A SUBDIVISION OF PART OF SECTION 21, T-22-N, R-11-E OSAGE COUNTY, OKLAHOMA

SUBDIVISION CONTAINS 54 LOTS

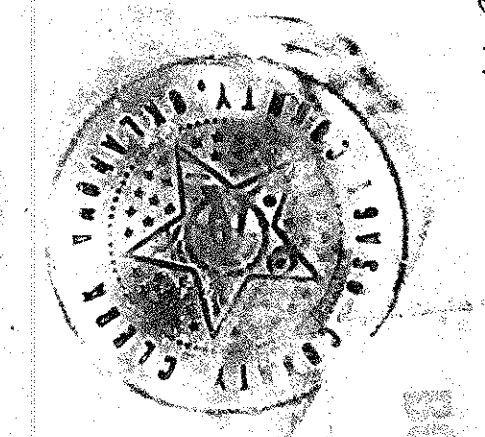


LOCATION MAP

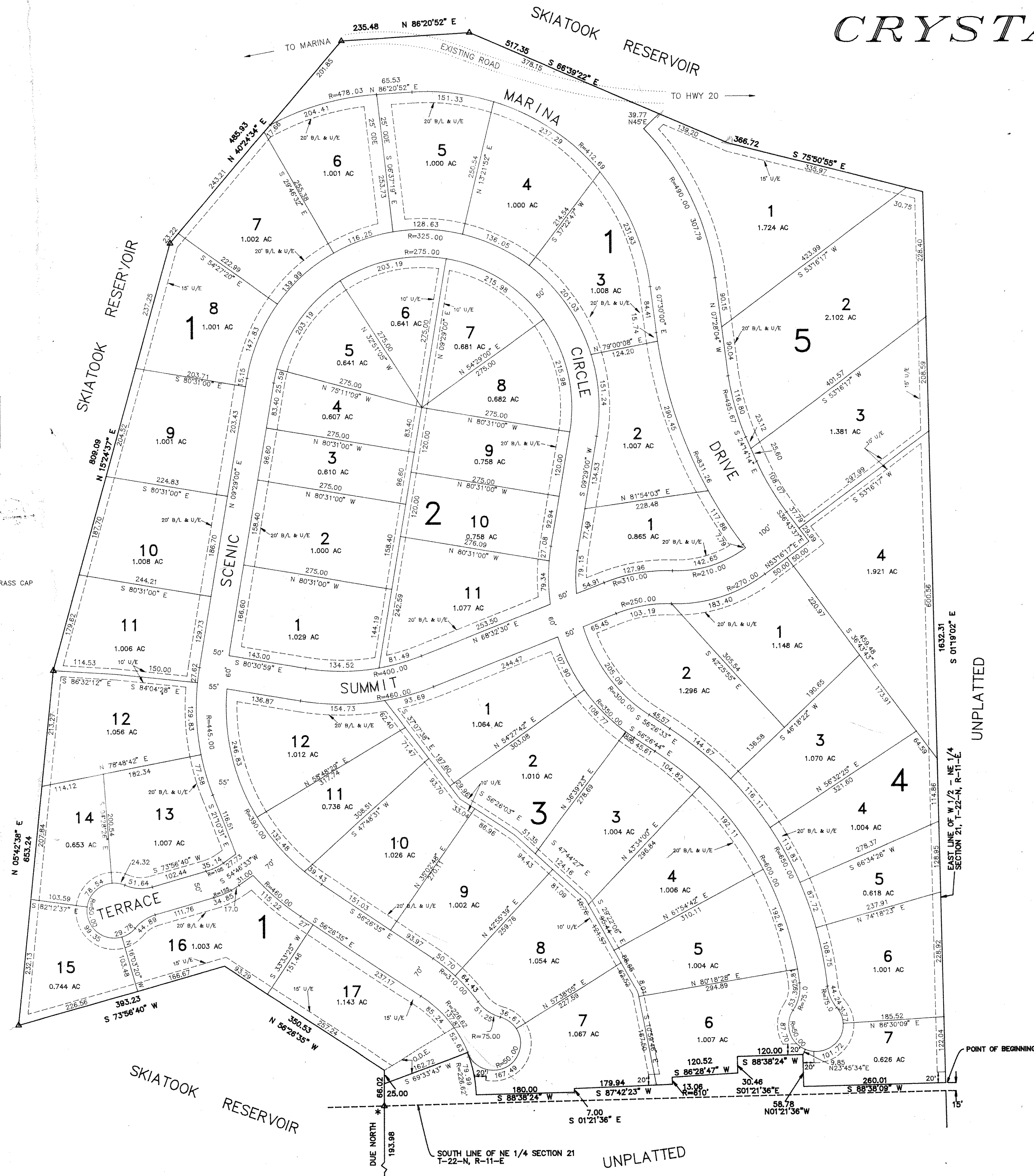


Plot #142

FILED
 AUG - 6 1993
 TSBY BISHOP, Co. Clerk
 State of Oklahoma, Osage County



BOOK 238 PAGE 903



NOTE:
 CONTROL FOR THIS SUBDIVISION IS BASED ON U.S. ARMY CORPS OF ENGINEERS BRASS CAPS (▲).

- LEGEND
- ▲ = U.S. ARMY CORPS OF ENGINEERS BRASS CAP
 - B/L = BUILDING LINE
 - U/E = UTILITY EASEMENT
 - O.D.E. = OVERLAND DRAINAGE EASEMENT

OWNER
CRYSTAL BAY ESTATES, INC.
 AND
BIG RED LEASING, INC.
 P. O. BOX 23
 PAWHUSKA, OK 74056
 287-1406

SURVEYOR
WATSON SURVEYING COMPANY, INC.
 401 E ROGERS
 SKIATOOK, OK 74070
 396-3214

ENGINEER
DENNIS L. HODO, P.E., INC.
 CONSULTING ENGINEER
 E-101, 8555 N. 117TH E. AVE., OWASSO, OK, 74055
 272-7552
 7-15-93

UNPLATTED

UNPLATTED