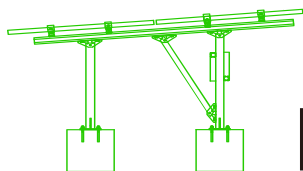




Solarhome · homenergy · DXIN
YOUR BEST PV SUPPLIER



Your
Best
PV
Supplier



BLUESUN SOLAR MOUNTING SYSTEM



BLUESUN RACK YOUR FUTURE

ABOUT BLUESUN SOLAR

Bluesun Solar Group is an international high-tech and growing group company , specializing in R&D , which manufactures solar cells , modules , and PV power generation systems.

Bluesun Solar has released a wide range of high-quality and innovative mounting systems . We provide roof and ground mounting solutions for residential , agriculture , industrial and commercial projects.

Bluesun Solar has many unique custom tailored solutions which can be assembled into a variety of structures to accommodate most job sites .

Bluesun Solar provides a technical support system complete with installation and code compliance documentation.

We now play a leading role in the solar racking industry and have rapidly gained popularity among solar mounting components and system solution provider across the world.

OUR HISTORY

15
YEAR

Comprehensive solar solution for customer around the world.

2017
Year

Capacity 500MW Professional Engineer , EPC Team.

2015
Year

Three factory base , Hangzhou , Jiangyin , Hefei Alibaba Top 10 Suppliers.

2014
Year

China Top 20 Factory.

2010
Year

Establish Solar cell , panel factory in Hangzhou City.

2004
Year



+86-158-5821-3997



info@bluesunpv.com



+86-551-6520-3660



Wenshui Road New Industrial Park, Shushan District, Hefei, China.

www.bluesunpv.com





**BLUESUN
RACK
YOUR FUTURE**

Tile roof solar mounting system

Tile roof solar mounting system with great flexibility mainly used for residential roof, and use aluminum alloy rail with stainless steel roof hook to install, suitable for installing framed and frameless modules flushed to the pitched roof. Special extruded aluminum rail, pre-assembled clamps and varied roof hooks or brackets with tilt-in module ensure easy and quick installation.

Specification:

Wind Speed: < 60m/s Snow load: 1.4 KN/m² Standard: AS1170.2
Degree: Parallel to the roof Arrangement: Vertical or Horizontal
Warranty: 10 years

Installation manual:

1. Installing roof hook by tapping screws.
2. Installing rail by side of roof hook, hook's hole can adjust the height of rail.
3. Two rails supported each panel, fix panels by mid clamp and end clamp kit.



Tile roof mounting accessories:



Mounting rail

Rail, Extruded Aluminum Profile, A16005-T52560mm, 3405 and 4200mm are the standard size



Roof hook kit

Tile roof hook, Stainless Steel SUS304

Function:

Fix the rail to the rafter



End clamp · Mid clamp kit

A16005-T5 & Stainless Steel A2-70

Function:

Fix solar panel at the end

Roof hook:

Part No.	YK-PT02	
Material	Stainless steel	
	Tapping screw	
	Socket bolt kit	
Finish	N/A	
Remark	The length of tile is long than normal	

Part No.	YK-PT03	
Material	Stainless steel	
	Tapping screw	
	Socket bolt kit	
Finish	N/A	
Remark	Used for another type rails	

Also we can choose others according to other actual section of tile roof as bellow:



YK-PT04



YK-PT05



YK-PT06



YK-PT07



YK-PT08



+86-158-5821-3997



info@bluesunpv.com



+86-551-6520-3660



Wenshui Road New Industrial Park, Shushan District, Hefei, China.

www.bluesunpv.com





BLUESUN RACK YOUR FUTURE

Metal roof solar mounting

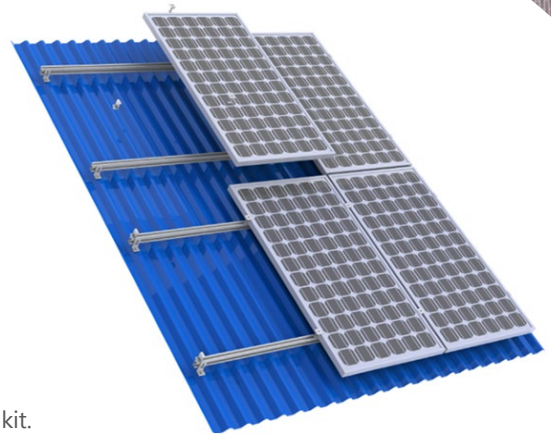
With variety of different tin roof brackets, Bluesun Solar tin roof mounting system can meet trapezoid/corrugated metal roof and standing seam roof demand with or without penetrating on the roof. Bluesun Solar has the excellent engineer team and quality management system to provide the perfect service.

Specification:

Wind Speed:< 60m/s Snow load:1.4 KN/m² Standard:AS1170.2
Degree:Parallel to the roof Arrangement:Vertical or Horizontal
Warranty:10 years

Installation manual:

- 1.Fix L-feet by tapping screw, ensure waterproof by rubber plate.
- 2.Installing rail by side of L-feet, L-feet's hole can adjust the height of rail.
- 3.Two rails supported each panel , fix panels by mid clamp and end clamp kit.



Metal roof mounting accessories:



Mounting rail

Rail , Extruded Aluminum Profile , A16005-T52560mm , 3405 and 4200mm are the standard size



L-foot kit

A16005-T5

Function:

Fix the rail to the beam



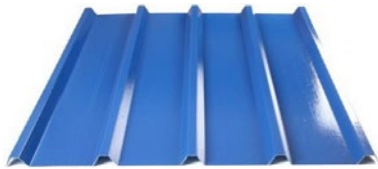
End clamp · Mid clamp kit

A16005-T5 & Stainless Steel A2-70

Function:

Fix solar panel at the end

Trapezoid roof bracket (Normal type):



Part No.	YK-PM02
Material	Stainless steel + Tapping screw + Socket bolt kit
Finish	N/A
Remark	By short Tapping screw to fix bracket



Corrugated metal roof bracket (Normal type):



Part No.	YK-PM03
Material	Stainless steel + hanger bolt + Socket bolt kit
Finish	N/A
Remark	Drilled into purlin of metal roof



Seam Clamp (Normal type):



Part No.	YK-PM04
Material	Aluminum alloy + Socket bolt kit
Finish	N/A
Remark	Seam clamp





BLUESUN
RACK
YOUR FUTURE

Ground solar mounting system for 2 rows type

Bluesun Solar Ground Mount is applicable to install the solar panel on a open field . Not only for residential , but also widely used for commercial project . Strong and powerful structure , nice appearance and lowest cost make this system quite popular all over the world .

Specification :

Wind Speed: <math><42\text{m/s}</math>
Snow load: 1.4 KN/m²
Standard: AS1170.2
Degree: 10°-70°
Arrangement: Vertical
Warranty: 10 years

Installation manual :

- 1.Install posts first , and then install main beam and diagonal brace on 2 columns.
- 2.Install mounting rail upon main beam.
- 3.Install PV panels by mid clamp and end clamps.



Main parts show as bellow :



Mounting rail、 Main beam、 Diagonal brace、 back support



Splice



Front、 Rear Post



Connection



End clamp、 Mid clamp kit

Project pics show as bellow :





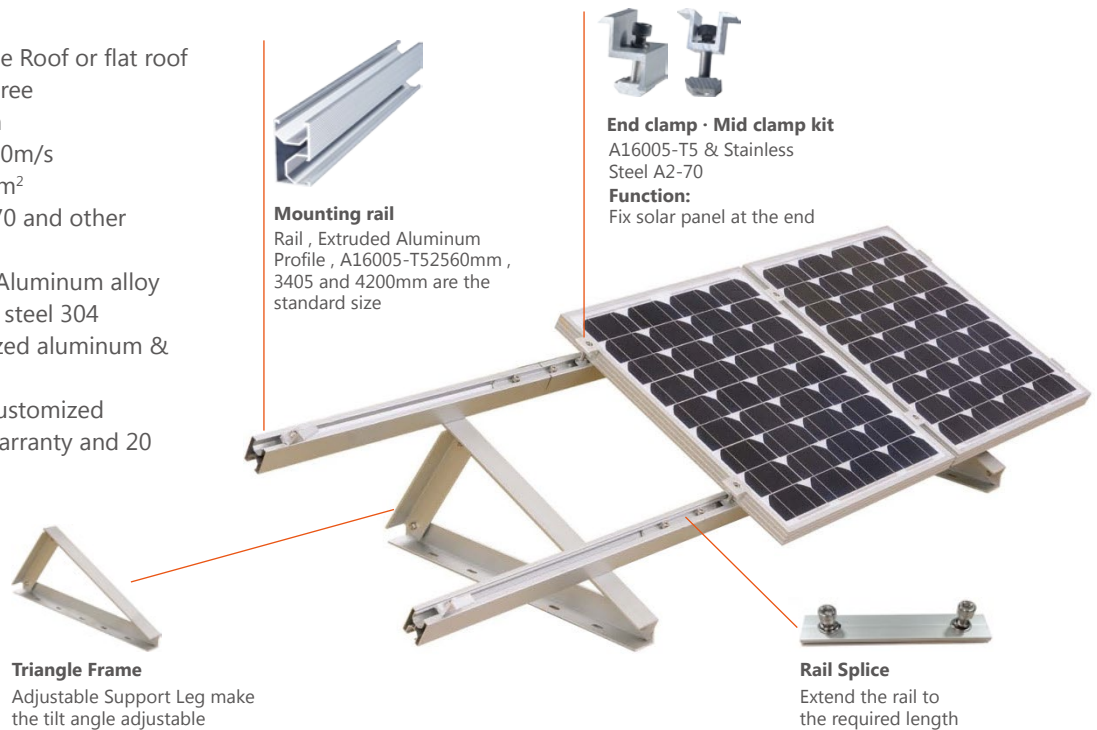
BLUESUN RACK YOUR FUTURE

Triangle mounting system

Adjustable Triangle Solar Racking System is specially designed for easy installation of solar panel to tilt a certain angle with flat roof. The mounting system design provides a strong and sturdy support for solar modules, it can be a fixed angle or adjustable such as 10~15 degree 15~30 degree and 30~60 degree for your requirement. Using our innovative Rail and pre-assembled components like tilt-in T module, clamp kit and highly pre-assembled tilt leg, This Metal Adjustable Tilt Solar Mounting makes the installation easy and quick to save your labor cost and time.

Specification:

Install site: Low profile Roof or flat roof
Tilt Angle: 10-60 degree
Building Height: 20m
Max Wind Speed: <60m/s
Snow Load: <1.4KN/m²
Standard: ASNZS 1170 and other international Standard
Material: High Class Aluminum alloy A16005-T5 & Stainless steel 304
Anticorrosive: Anodized aluminum & stainless steel
Color: Natural and Customized
Warranty: 10 years warranty and 20 years service life



Project pics show as bellow:

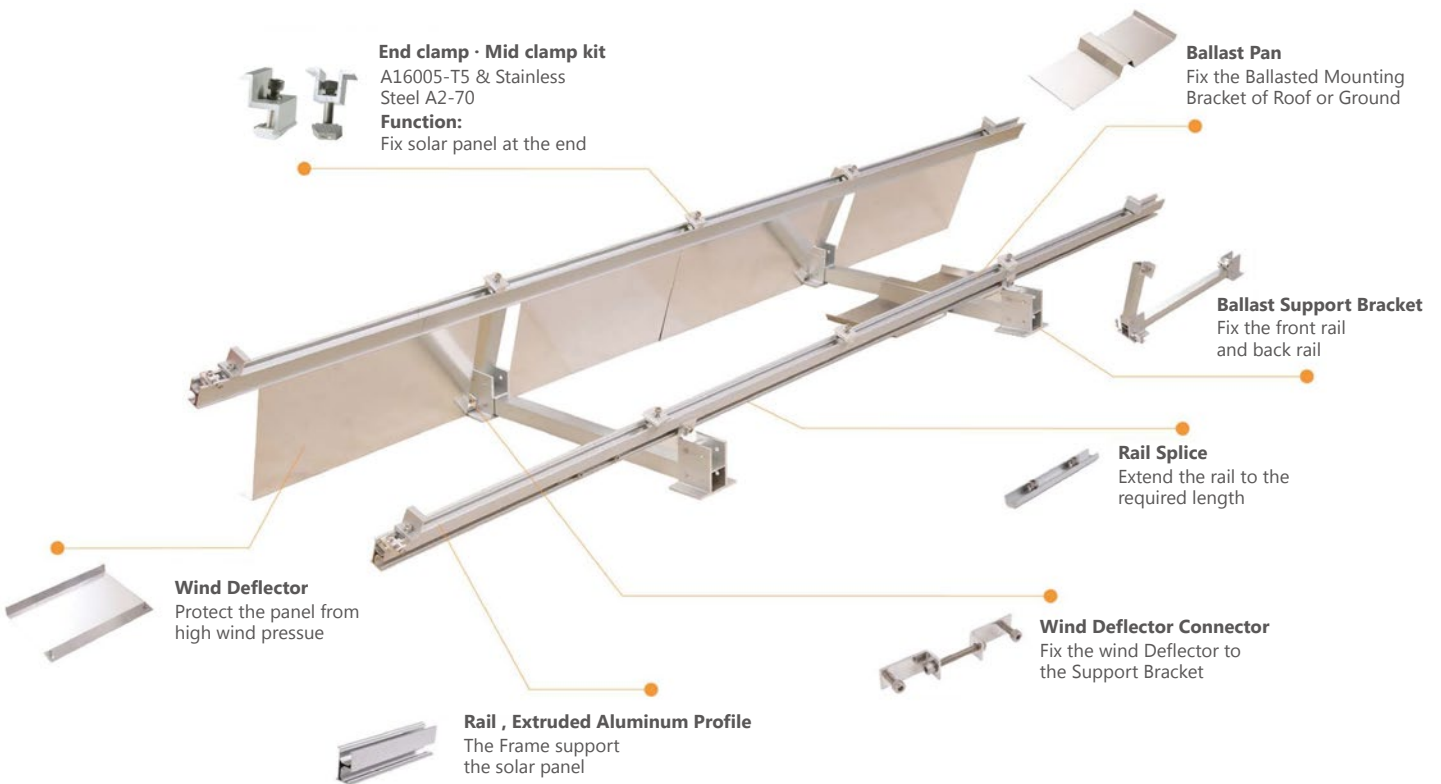




**BLUESUN
RACK
YOUR FUTURE**

Ballasted mounting system

Bluesun solar mounting system is a highly engineered solution which can effectively reduce the influence of wind on the photovoltaic system. Also this one type can secure the array without damaging the flat roof, It is compatible with the usual framed modules and typically does not require roof penetrations. Made of light weight and strong aluminum construction, ballasted solution components are preassembled and pre-cut to prevent corrosion and save your installation time and labor cost.



Project pics show as bellow:



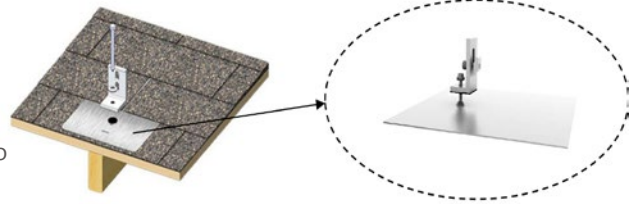


**BLUESUN
 RACK
 YOUR FUTURE**

Asphalt shingle roof solar mounting system

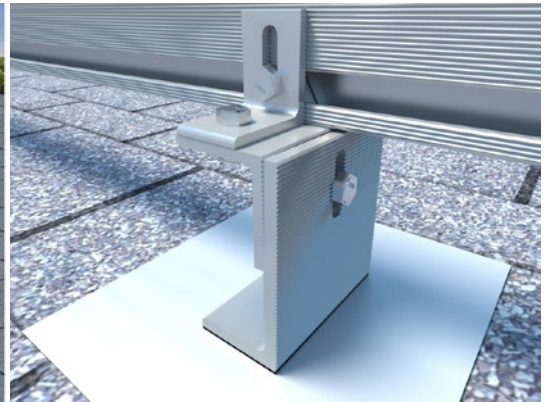
Asphalt shingle roof solar mounting system used for support solar panel on asphalt shingle roof without any degree. Just use simple tools will be fine to complete all accessories installation.

Main parts we use are aluminum alloy 6063-T5 material, surface treat will be anodizing. All bolts pre-assembled will be stainless steel SUS304 material. Tapping screw which need to be drilled into asphalt shingle roof by L-feet holes, so we use by carbon steel material with hot dip galvanized surface treatment. All mounting structure has 10- year warranty and 25-year service life.



Asphalt roof solar brackekt show

Installation Site:



Project pics shown as bellow :



Project pics shown as bellow :

